

District I  
1625 N. French Dr., Hobbs, NM 88240  
Phone: (575) 393-6161 Fax: (575) 393-0720  
District II  
811 S. First St., Artesia, NM 88210  
Phone: (575) 748-1283 Fax: (575) 748-9720  
District III  
1000 Rio Brazos Road, Aztec, NM 87410  
Phone: (505) 334-6178 Fax: (505) 334-6170  
District IV  
1220 S. St. Francis Dr., Santa Fe, NM 87505  
Phone: (505) 476-3460 Fax: (505) 476-3462

RECEIVED

NOV 20 2019

State of New Mexico  
Energy, Minerals & Natural Resources  
Department  
OIL CONSERVATION DIVISION  
220 South St. Francis Dr.  
Santa Fe, NM 87505

FORM C-102

Revised August 1, 2011

Submit one copy to appropriate

District Office

☐ AMENDED REPORT

WELL LOCATION AND ACREAGE DEDICATION PLAT

<sup>1</sup> API Number 30-015-46451	<sup>2</sup> Pool Code 98220	<sup>3</sup> Pool Name PURPLE SAGE; WOLFCAMP
<sup>4</sup> Property Code 326330	<sup>5</sup> Property Name WTG FED COM	<sup>6</sup> Well Number 211H
<sup>7</sup> GRID No. 372043	<sup>8</sup> Operator Name TAP ROCK OPERATING, LLC.	<sup>9</sup> Elevation 2884'

<sup>10</sup>Surface Location

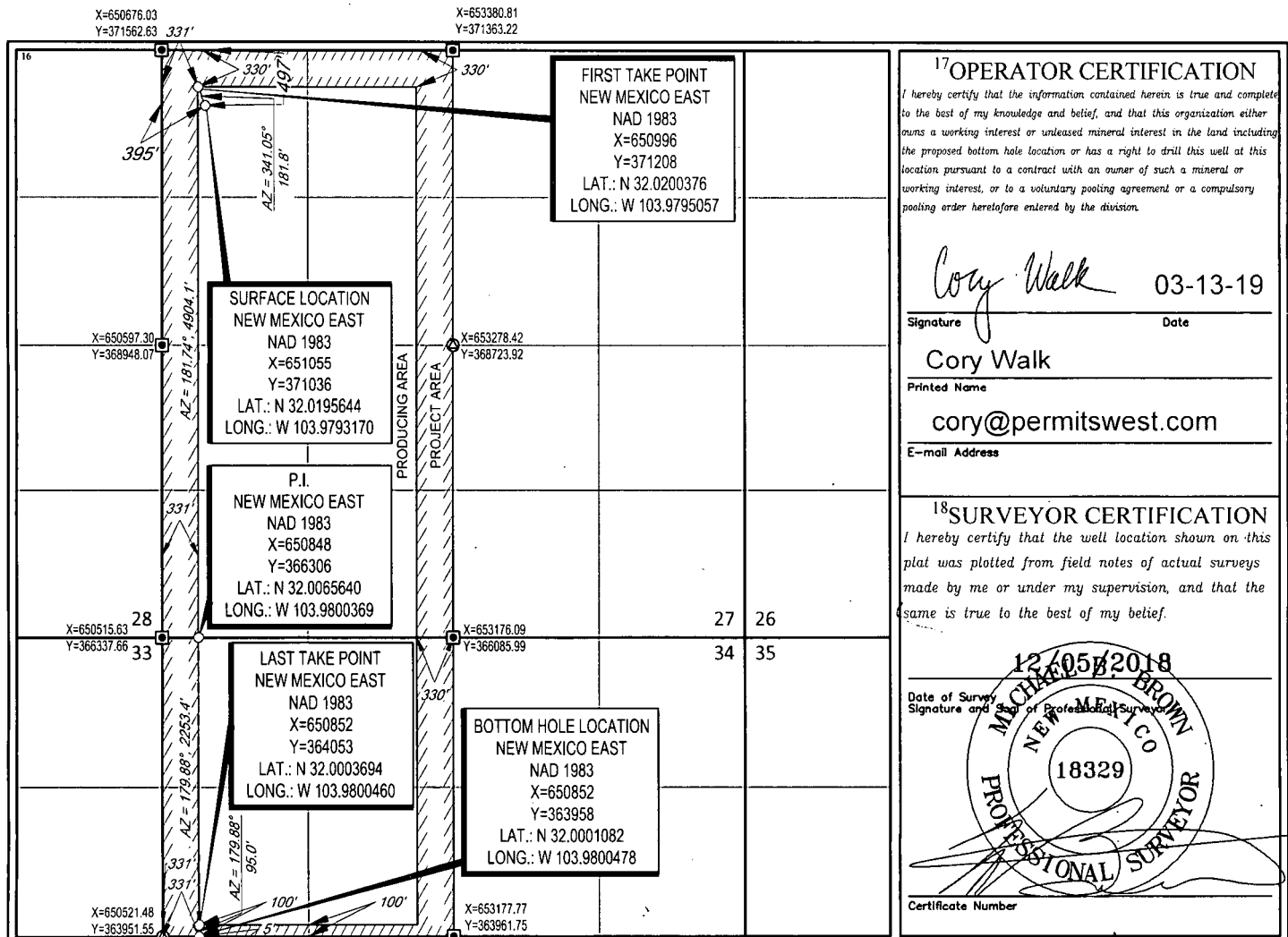
UL or lot no. D	Section 27	Township 26-S	Range 29-E	Lot Idn -	Feet from the 497'	North/South line NORTH	Feet from the 395'	East/West line WEST	County EDDY
--------------------	---------------	------------------	---------------	--------------	-----------------------	---------------------------	-----------------------	------------------------	----------------

<sup>11</sup>Bottom Hole Location If Different From Surface

UL or lot no. 9	Section 34	Township 26-S	Range 29-E	Lot Idn -	Feet from the 5'	North/South line SOUTH	Feet from the 331'	East/West line WEST	County EDDY
--------------------	---------------	------------------	---------------	--------------	---------------------	---------------------------	-----------------------	------------------------	----------------

<sup>12</sup> Dedicated Acres 457.78	<sup>13</sup> Joint or Infill	<sup>14</sup> Consolidation Code	<sup>15</sup> Order No.
---	-------------------------------	----------------------------------	-------------------------

No allowable will be assigned to this completion until all interests have been consolidated or a non-standard unit has been approved by the division.



<sup>17</sup>OPERATOR CERTIFICATION

I hereby certify that the information contained herein is true and complete to the best of my knowledge and belief, and that this organization either owns a working interest or unleased mineral interest in the land including the proposed bottom hole location or has a right to drill this well at this location pursuant to a contract with an owner of such a mineral or working interest, or to a voluntary pooling agreement or a compulsory pooling order heretofore entered by the division.

Cory Walk 03-13-19  
Signature Date

Cory Walk

Printed Name

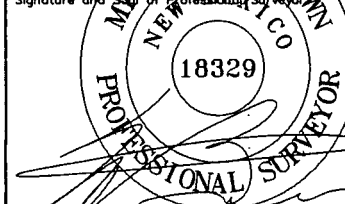
cory@permitswest.com

E-mail Address

<sup>18</sup>SURVEYOR CERTIFICATION

I hereby certify that the well location shown on this plat was plotted from field notes of actual surveys made by me or under my supervision, and that the same is true to the best of my belief.

12/05/2018  
Date of Survey  
Signature and Seal of Professional Surveyor



Certificate Number

Ruf 12/3/19