

RECEIVED

DISTRICT I  
1625 N. FRENCH DR., HOBBS, NM 88240  
Phone: (505) 393-0181 Fax: (505) 393-0720

DISTRICT II  
511 S. FIRST ST., ARTESIA, NM 88210  
Phone: (505) 748-1283 Fax: (505) 748-0720

DISTRICT III  
1000 RIO BRAZOS RD., AZTEC, NM 87410  
Phone: (505) 334-8178 Fax: (505) 334-8170

DISTRICT IV  
1220 S. ST. FRANCIS DR., SANTA FE, NM 87505  
Phone: (505) 476-3460 Fax: (505) 476-3462

State of New Mexico  
Energy, Minerals & Natural Resources Department  
OIL CONSERVATION DIVISION  
1220 SOUTH ST. FRANCIS DR.  
Santa Fe, New Mexico 87505

NOV 2 2019  
DISTRICT II ARTESIA O.C.D.

Form C-102  
Revised August 1, 2011  
Submit a copy to appropriate  
District Office

☐ AMENDED REPORT

WELL LOCATION AND ACREAGE DEDICATION PLAT

API Number <b>30-015-46456</b>	Pool Code <b>96473</b>	Pool Name <b>Pierce Crossing Bone Spring, East</b>
Property Code <b>320631</b>	Property Name <b>CORRAL CANYON 36_25 FEDERAL COM</b>	Well Number <b>74H</b>
OGRID No. <b>16696</b>	Operator Name <b>OXY USA, INC.</b>	Elevation <b>3143.0'</b>

Surface Location

UL or lot No.	Section	Township	Range	Lot Idn	Feet from the	North/South line	Feet from the	East/West line	County
1	1	25-S	29-E		875	NORTH	150	EAST	EDDY

Bottom Hole Location If Different From Surface

UL or lot No.	Section	Township	Range	Lot Idn	Feet from the	North/South line	Feet from the	East/West line	County
A	25	24-S	29-E		20	NORTH	940	EAST	EDDY

Dedicated Acres	Joint or Infill	Consolidation Code	Order No.
<b>640</b>	<b>Y</b>		

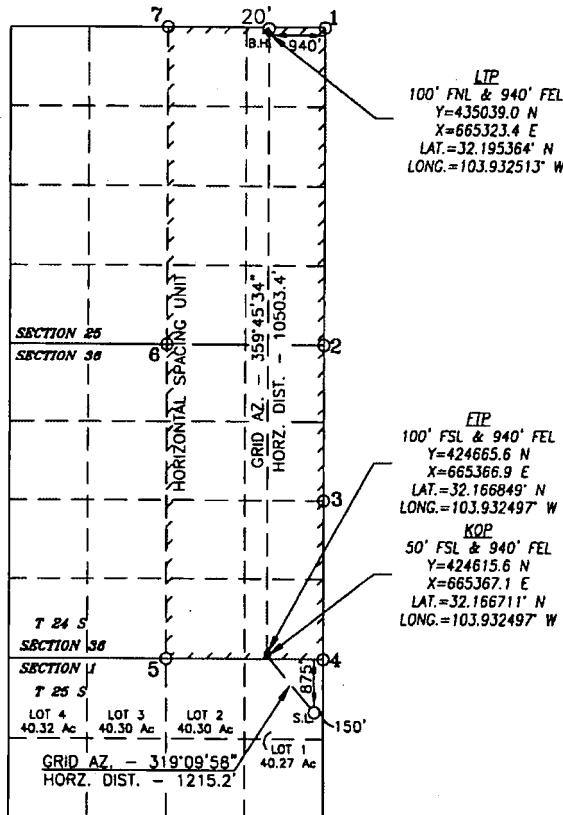
NO ALLOWABLE WILL BE ASSIGNED TO THIS COMPLETION UNTIL ALL INTERESTS HAVE BEEN CONSOLIDATED  
OR A NON-STANDARD UNIT HAS BEEN APPROVED BY THE DIVISION

\* ALL COORDINATES ARE NAD 83 VALUES

PROPOSED BOTTOM  
HOLE LOCATION  
Y=435119.0 N  
X=665323.0 E  
LAT.=32.195584° N  
LONG.=103.932513° W

POINT LEGEND	
1	Y=435137.6 N X=666282.9 E
2	Y=429849.3 N X=666294.9 E
3	Y=427157.3 N X=666300.8 E
4	Y=424572.2 N X=666307.2 E
5	Y=424553.8 N X=663654.8 E
6	Y=429848.2 N X=663620.3 E
7	Y=435141.4 N X=663809.4 E

SURFACE LOCATION  
Y=423696.2 N  
X=666161.7 E  
LAT.=32.164176° N  
LONG.=103.929940° W



OPERATOR CERTIFICATION

I hereby certify that the information herein is true and complete to the best of my knowledge and belief, and that this organization either owns a working interest or unleased mineral interest in the land including the proposed bottom hole location or has a right to drill this well at this location pursuant to a contract with an owner of such mineral or working interest, or to a voluntary pooling agreement or a compulsory pooling order heretofore entered by the division.

*David Stewart* 10/1/19  
Signature Date

David Stewart  
Printed Name

David.Stewart@oxy.com  
E-mail Address

SURVEYOR CERTIFICATION

I hereby certify that the well location shown on this plat was plotted from field notes of actual surveys made by me or under my supervision, and that the same is true and correct to the best of my belief.

MAY 11, 2019

Date of Survey

Signature & Seal of Professional Surveyor



*Chad Harcrow* 9/9/19  
Certificate No. CHAD HARCROW 17777  
W.O. #19-1705 DRAWN BY: AM

Rev 12-3-19