

Submit 3 Copies To Appropriate District Office

District I

1625 N. French Dr., Hobbs, NM 88240

District II

1301 W. Grand Ave., Artesia, NM 88210

District III

1000 Rio Brazos Rd., Aztec, NM 87401

District IV

1220 S. St. Francis Dr., Santa Fe, NM 87505

State of New Mexico

Energy, Minerals and Natural Resources

Form C-103

Revised June 10, 2003

WELL API NO.

30-015-32862

5. Indicate Type of Lease

STATE ☒ FEE ☐

6. State Oil & Gas Lease No.

NM4681

7. Lease Name or Unit Agreement Name

State 2

8. Well Number

8

9. OGRID Number

215758

10. Pool name or Wildcat

Undesignated Hackberry Morrow, North

SUNDRY NOTICES AND REPORTS ON WELLS

(DO NOT USE THIS FORM FOR PROPOSALS TO DRILL OR TO DEEPEN OR PLUG BACK TO A DIFFERENT RESERVOIR. USE "APPLICATION FOR PERMIT" (FORM C-101) FOR SUCH PROPOSALS.)

1. Type of Well:

Oil Well ☐ Gas Well ☒ Other

2. Name of Operator

Pecos Production Company

3. Address of Operator

400 W. Illinois, Suite 1070, Midland, TX 79701

4. Well Location

Unit Letter N : 660' feet from the South line and 1980' feet from the West line

Section 2

Township 19S

Range 30E

NMPM

Eddy

County

11. Elevation (Show whether DR, RKB, RT, GR, etc.)

3427' GR

12. Check Appropriate Box to Indicate Nature of Notice, Report or Other Data

NOTICE OF INTENTION TO:

PERFORM REMEDIAL WORK ☐ PLUG AND ABANDON ☐

TEMPORARILY ABANDON ☐ CHANGE PLANS ☒

PULL OR ALTER CASING ☐ MULTIPLE COMPLETION ☐

OTHER: ☐

SUBSEQUENT REPORT OF:

REMEDIAL WORK ☐ ALTERING CASING ☐

COMMENCE DRILLING OPNS. ☐ PLUG AND ABANDONMENT ☐

CASING TEST AND CEMENT JOB ☐

OTHER: ☐

13. Describe proposed or completed operations. (Clearly state all pertinent details, and give pertinent dates, including estimated date of starting any proposed work). SEE RULE 1103. For Multiple Completions: Attach wellbore diagram of proposed completion or recompletion.

1. Well location changed to 660' FSL & 1980' FWL of Sec. (See attached Form C-102)
2. Well depth changed to 12,200'. (See attached revised well plan)
3. Intermediate casing depth changed to 3200'. (See attached revised well plan)
4. BOP rating changed from 3M to 5M. (See attached revised well plan & schematic attached)

I hereby certify that the information above is true and complete to the best of my knowledge and belief.

SIGNATURE Will Huck TITLE VP - Engr & Operatins DATE 7/21/03

Type or print name William R. Huck E-mail address: billh@pecosproduction.com Telephone No. 432-620-8480

(This space for State use) Jim W. Green District Supervisor

APPROVED BY Jim W. Green TITLE District Supervisor DATE JUL 23 2003

Conditions of approval, if any:

## DISTRICT I

P.O. Box 1800, Santa Fe, NM 87501-1800

## DISTRICT II

P.O. Drawer 80, Artesia, NM 88210-0080

## DISTRICT III

1000 Elm Street, Santa Fe, NM 87501-1000

## DISTRICT IV

P.O. Box 6000, Santa Fe, NM 87501-0600

## State of New Mexico

Energy, Minerals and Natural Resources Department

## OIL CONSERVATION DIVISION

P.O. Box 2088

Santa Fe, New Mexico 87504-2088

Form C-102

Revised February 10, 1994

Submit to Appropriate District Office

State Lease - 4 Copies

Fee Lease - 8 Copies

## WELL LOCATION AND ACREAGE DEDICATION PLAT

☒ AMENDED REPORT

API Number 30-015-32862	Pool Code	Pool Name Undesignated Hackberry Morrow, North
Property Code	Property Name STATE 2	Well Number 8
OGRID No. 215758	Operator Name PECOS PRODUCTION COMPANY	Elevation 3427'

## Surface Location

UL or lot No.	Section	Township	Range	Lot 1/2	Feet from the	North/South line	Feet from the	East/West line	County
N	2	19-S	30-E		660'	SOUTH	1980'	WEST	EDDY

## Bottom Hole Location If Different From Surface

UL or lot No.	Section	Township	Range	Lot 1/2	Feet from the	North/South line	Feet from the	East/West line	County

Dedicated Acres	Joint or Infill	Consolidation Code	Order No.
320			

NO ALLOWABLE WILL BE ASSIGNED TO THIS COMPLETION UNTIL ALL INTERESTS HAVE BEEN CONSOLIDATED  
OR A NON-STANDARD UNIT HAS BEEN APPROVED BY THE DIVISION

LOT 4	LOT 3	LOT 2	LOT 1
Pecos Production Company State 2 Lease			
40.40 AC	40.38 AC	40.38 AC	40.36 AC

**OPERATOR CERTIFICATION**

I hereby certify that the information contained herein is true and complete to the best of my knowledge and belief.

*William R. Huck*  
Signature

William R. Huck  
Printed Name

VP - Engr. & Operations  
Title

7-21-03  
Date

**SURVEYOR CERTIFICATION**

I hereby certify that the well location shown on this plat was plotted from field notes of actual surveys made by me or under my supervision, and that the same is true and correct to the best of my belief.

June 11, 2003

Date Surveyed *June 11, 2003* A.W.B.

Signature *Ronald J. Eidsen*  
Professional Surveyor

*Ronald J. Eidsen*  
7/21/03  
06.11.0755

Certification No. *RONALD J. EIDSEN* 3839  
SAXY-EDDY 18041

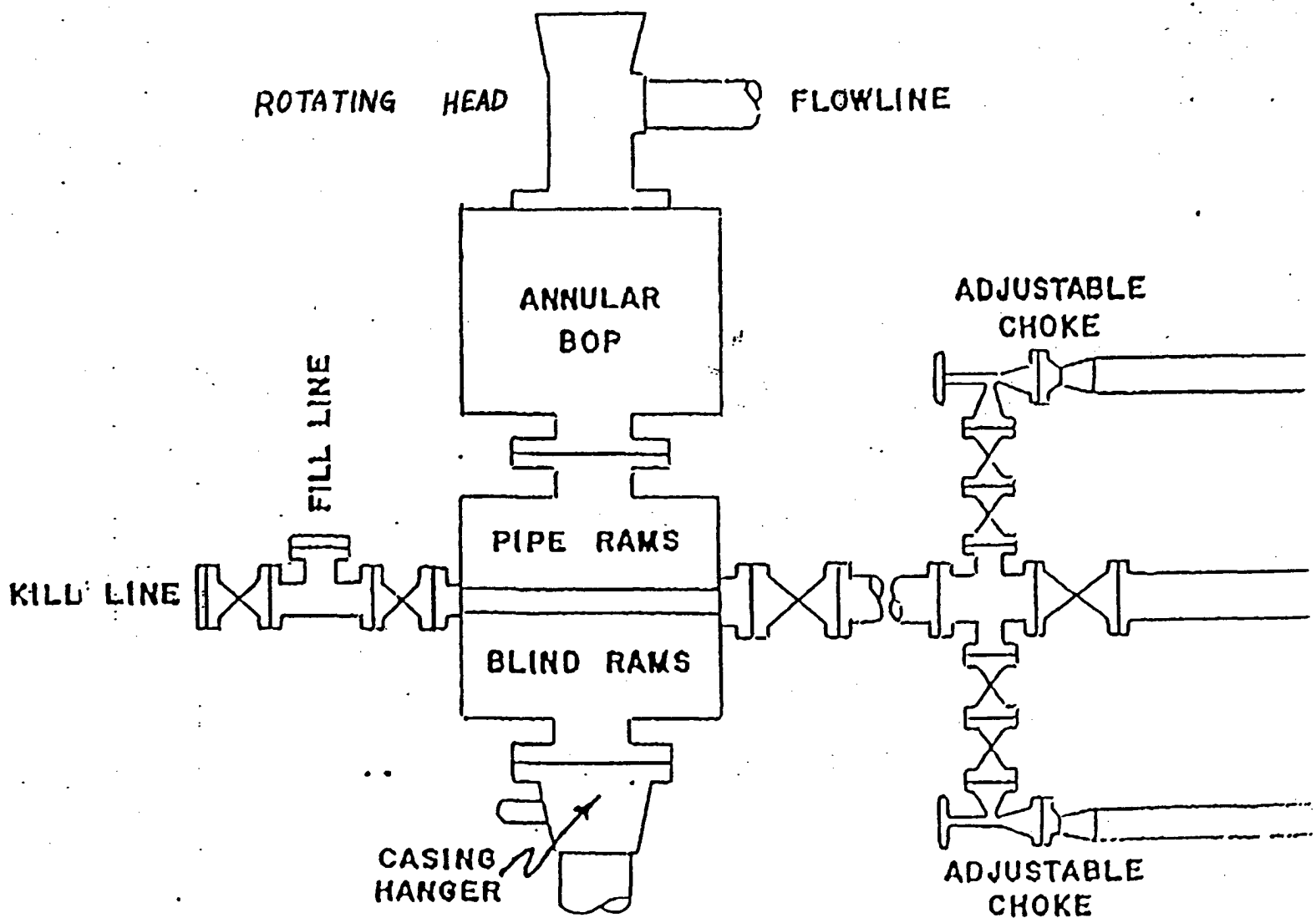
## BLOWOUT PREVENTOR ARRANGEMENT

11" SHAFFER TYPE LWS, 5000 psi WP

11" CAMERON SPHERICAL, 5000 psi WP

120 GALLON, 5 STATION KOOMEY ACCUMULATOR

5000 psi WP CHOKE MANIFOLD



**Pecos Production Company  
Revised Drilling Well Plan**

**Well Name:** State 2 No. 8

**Location:** 660' FSL & 1980' FWL, Section 2, Twp 19-S, Rge 30-E, Eddy Co, NM  
Well is believed to be outside the OCD R-111-P Area.  
Shallow horizons (Yates – San Andres) contain H<sub>2</sub>S. Limited Exposure radius.  
100 PPM ROE = 11.71ft. 500 PPM ROE = 5.71 ft  
Use appropriate warning signs, monitors, and train drilling personnel.

**Objective:** 8,800' Bone Spring, 12,200' Morrow

**Rig Specs:** Min 800 Hp w/ 12,000 – 13,000' depth bracket.  
Proj Max Drlg Hookload (16.6# dp): 250,000 lb.  
Proj Max Casing Hookload: 210,000 lb.

**BOP's:** Surface Hole: None  
Intermediate: 13-5/8", 3M Double Ram w/ Annular.  
Production: 11", 5M Double Ram w/ Annular.

**EST FORMATION TOPS**

Yates	2,290	1 <sup>st</sup> BS Sand	8,490
Queen	2,713	2 <sup>nd</sup> BS Sand	8,600
SanAndres	3,460	Wolfcamp	9,700
Delaware	5,023	Strawn	10,700
Bone Spring	6,000	Morrow`	11,600

**LOCATION**

Build 300' x 200' caliche pad w/ 150 x 150 double horseshoe reserve. Use material from reserve for pad and road surface. Keep reserve pit below grade to facilitate reclamation to OCD guidelines. Install 6' x 6' x 6' cellar. Drill and grout in 40 ft of 20 " conductor pipe.

**SURFACE HOLE**

Drill 17-1/2" surface hole to +/- 680'. Use fresh water – native mud. Circulate steel pits to control washout. Run and cement 13-3/8" casing. Centralize every other collar. Install Texas Pattern Guide shoe and insert float. Displace w/ fresh water.

**SURFACE CASING**

Size	Wgt	Grd	Cplg	Depth	Col SF	Burst SF	Tens SF
13-3/8"	48#	H-40	STC	680	2.43	1.15*	9.80

MASP – 1500 psi.

**CEMENT**

Lead: 385 sx Class C w/ 4% gel, 1/4# Celloflake, 2% CaCl. 13.4 ppg. 1.77 cf/sk.  
Tail: 200 sx Class C w/ 1/4# celloflake, 2% CaCl. 14.8 ppg. 1.34 cf/sk.

**INTERMEDIATE HOLE**

WOC 4 hrs. Cut off conductor and 13-3/8" casing. Weld on 13-3/8" SO x 13-5/8", 3M Bradenhead. Install and test 13-5/8", 3M double-ram BOP's w/ Annular. Test casing to 1000 psi. Drill out

shoe and drill 11" hole to 3200'. Circulate brine to control washout in salt section. Lower waterloss to 20 cc at 3200 ft to stabilize hole for casing job. Run and cement 8-5/8" casing. Centralize shoe joint and every 4th collar back to 1000'. Install cement nose guide shoe and float collar. Set 75 % csg weight on slips after bumping plug.

#### INTERMEDIATE CASING

Size	Wgt	Grd	Cplg	Sect L.	Depth	Col SF	Burst SF	Tens SF
8-5/8"	32	J-55	STC	3200	3200	1.52	1.31	3.63

MASP – 3000 psi.

#### CEMENT

Lead: 550 sx 50:50 Poz:C w/ 5% salt, 10% gel. 11.6 ppg. 2.61 cf/sk. 1900' fill x 100% excess.

Tail: 200 sx Class C w/ 1% CaCl. 14.8 ppg. 1.34 cf/sk. 500' fill x 100% excess.

#### PRODUCTION HOLE

Rig down 13-5/8" stack. Install 13-5/8" 3M x 11", 3M B-section and test seal to 3000 psi. Install 11", 5M double-ram BOP's w/ annular and rotating head. Test BOP's and casing to 2500 psi.. Drill out shoe and test formation to 12 ppg EMW. Drill 7-7/8" hole to 12,200 ft. Drill out 8-5/8" casing with cut brine. Control seepage w/ fibrous LCM sweeps. At 9500', add brine for 9.5 ppg weight. Lower WL to 10 cc w/ white starch at 10,500', maintain adequate viscosity to clean hole with XCD polymer. MW of 9.5 – 10.0 ppg should be adequate for Strawn and Morrow sections. At TD, condition hole and log. If productive – condition hole for casing, change BOP rams and run 5-1/2 " production casing to TD. Run float shoe and float collar, DV tool at +/-7500'. Centralize casing through zones of interest.

#### PRODUCTION CASING

Size	Wgt	Grd	Cplg	Sect. L	Depth	Col. SF	Burst SF	Tens SF*
5-1/2"	17#	L-80	LTC	3200	3200	3.80	1.54	1.62
5-1/2"	17#	J-55	LTC	4300	7500	1.15	1.10	1.61
5-1/2"	17#	N-80	LTC	3300	10800	1.12	NA	4.35
5-1/2"	17#	HCN	LTC	1400	12200	1.35	NA	NA

#### CEMENT

1<sup>st</sup> stage Lead: 325 sx 35:65:6 "H" w/ 1.1% FL-52. 12.4 ppg, 2.0 cf/sk  
2500' fill w/ 50% excess

Tail: 380 sx 61:15:11 "H":poz:cse w/ .7% FL-25, .4% FL-52, .5% SMS.  
2200 ft fill w/ 50% excess.

2<sup>nd</sup> stage Lead: 400 sx 50:50 poz "H" w/ 3% salt, .5% FL-52.  
3300' fill w/ 50% excess

Tail 200 sx Class C Neat.  
1100' fill w/ 50% excess.

#### COMPLETION

Set 75% casing weight on slips. Remove BOP's and install 11", 3M x 7-16", 3M tubinghead. Test seals to 3000 psi. RDMO rotary tools.