

RECEIVED

DEC 04 2019

FORM APPROVED
OMB No. 1004-0137
Expires: January 31, 2018

UNITED STATES
DEPARTMENT OF THE INTERIOR
BUREAU OF LAND MANAGEMENT

APPLICATION FOR PERMIT TO DRILL OR REENTER

1a. Type of work: <input checked="" type="checkbox"/> DRILL <input type="checkbox"/> REENTER		5. Lease Serial No. NMNM120904
1b. Type of Well: <input checked="" type="checkbox"/> Oil Well <input checked="" type="checkbox"/> Gas Well <input type="checkbox"/> Other		6. If Indian, Allottee or Tribe Name
1c. Type of Completion: <input type="checkbox"/> Hydraulic Fracturing <input checked="" type="checkbox"/> Single Zone <input type="checkbox"/> Multiple Zone		7. If Unit or CA Agreement, Name and No.
2. Name of Operator DEVON ENERGY PRODUCTION COMPANY LP		8. Lease Name and Well No. THOROUGHbred-10-3.FED 711H
3a. Address 333 West Sheridan Avenue Oklahoma City OK 73102	3b. Phone No. (include area code) (800)583-3866	9. API Well No. 30-015-46477
4. Location of Well (Report location clearly and in accordance with any State requirements. *) At surface SWSW / 220 FSL / 350 FWL / LAT 32.0507278 / LONG -103.7735247 At proposed prod. zone NWSW / 2310 FSL / 330 FWL / LAT 32.0711267 / LONG -103.7735584		10. Field and Pool or Exploratory FORTY-NINER RIDGE BONE SPRING, GAB
11. Sec., T. R. M. or Blk. and Survey or Area SEC 10 / T26S / R31E / NMP		12. County or Parish EDDY
13. State NM		14. Distance in miles and direction from nearest town or post office*
15. Distance from proposed* location to nearest property or lease line, ft. (Also to nearest drig. unit line, if any) 220 feet	16. No of acres in lease 200	17. Spacing Unit dedicated to this well 240
18. Distance from proposed location* to nearest well, drilling, completed, applied for, on this lease, ft. 1846 feet	19. Proposed Depth 11485 feet / 18832 feet	20. BLM/BIA Bond No. in file FED: NMB000801
21. Elevations (Show whether DF, KDB, RT, GL, etc.) 3401 feet	22. Approximate date work will start* 05/27/2020	23. Estimated duration 45 days
24. Attachments		

The following, completed in accordance with the requirements of Onshore Oil and Gas Order No. 1, and the Hydraulic Fracturing rule per 43 CFR 3162.3-3 (as applicable)

- | | |
|--|---|
| 1. Well plat certified by a registered surveyor. | 4. Bond to cover the operations unless covered by an existing bond on file (see Item 20 above). |
| 2. A Drilling Plan. | 5. Operator certification. |
| 3. A Surface Use Plan (if the location is on National Forest System Lands, the SUPO must be filed with the appropriate Forest Service Office). | 6. Such other site specific information and/or plans as may be requested by the BLM. |

25. Signature (Electronic Submission)	Name (Printed/Typed) Jenny Harms / Ph: (405)552-6560	Date 06/27/2019
Title Regulatory Compliance Professional		
Approved by (Signature) (Electronic Submission)	Name (Printed/Typed) Christopher Walls / Ph: (575)234-2234	Date 11/25/2019
Title Petroleum Engineer		

Application approval does not warrant or certify that the applicant holds legal or equitable title to those rights in the subject lease which would entitle the applicant to conduct operations thereon.
Conditions of approval, if any, are attached.

Title 18 U.S.C. Section 1001 and Title 43 U.S.C. Section 1212, make it a crime for any person knowingly and willfully to make to any department or agency of the United States any false, fictitious or fraudulent statements or representations as to any matter within its jurisdiction.

APPROVED WITH CONDITIONS

Approval Date: 11/25/2019

GCP?

RUP 12-10-19.

INSTRUCTIONS

GENERAL: This form is designed for submitting proposals to perform certain well operations, as indicated on Federal and Indian lands and leases for action by appropriate Federal agencies, pursuant to applicable Federal laws and regulations. Any necessary special instructions concerning the use of this form and the number of copies to be submitted, particularly with regard to local, area, or regional procedures and practices, either are shown below or will be issued by, or may be obtained from local Federal offices.

ITEM 1: If the proposal is to redrill to the same reservoir at a different subsurface location or to a new reservoir, use this form with appropriate notations. Consult applicable Federal regulations concerning subsequent work proposals or reports on the well.

ITEM 4: Locations on Federal or Indian land should be described in accordance with Federal requirements. Consult local Federal offices for specific instructions.

ITEM 14: Needed only when location of well cannot readily be found by road from the land or lease description. A plat, or plats, separate or on the reverse side, showing the roads to, and the surveyed location of, the well, and any other required information, should be furnished when required by Federal agency offices.

ITEMS 15 AND 18: If well is to be, or has been directionally drilled, give distances for subsurface location of hole in any present or objective productive zone.

ITEM 22: Consult applicable Federal regulations, or appropriate officials, concerning approval of the proposal before operations are started.

ITEM 24: If the proposal will involve hydraulic fracturing operations, you must comply with 43 CFR 3162.3-3, including providing information about the protection of usable water. Operators should provide the best available information about all formations containing water and their depths. This information could include data and interpretation of resistivity logs run on nearby wells. Information may also be obtained from state or tribal regulatory agencies and from local BLM offices.

NOTICES

The Privacy Act of 1974 and regulation in 43 CFR 2.48(d) provide that you be furnished the following information in connection with information required by this application.

AUTHORITY: 30 U.S.C. 181 et seq., 25 U.S.C. 396; 43 CFR 3160

PRINCIPAL PURPOSES: The information will be used to: (1) process and evaluate your application for a permit to drill a new oil, gas, or service well or to reenter a plugged and abandoned well; and (2) document, for administrative use, information for the management, disposal and use of National Resource Lands and resources including (a) analyzing your proposal to discover and extract the Federal or Indian resources encountered; (b) reviewing procedures and equipment and the projected impact on the land involved; and (c) evaluating the effects of the proposed operation on the surface and subsurface water and other environmental impacts.

ROUTINE USE: Information from the record and/or the record will be transferred to appropriate Federal, State, and local or foreign agencies, when relevant to civil, criminal or regulatory investigations or prosecution, in connection with congressional inquiries and for regulatory responsibilities.

EFFECT OF NOT PROVIDING INFORMATION: Filing of this application and disclosure of the information is mandatory only if you elect to initiate a drilling or reentry operation on an oil and gas lease.

The Paperwork Reduction Act of 1995 requires us to inform you that:

The BLM connects this information to an evaluation of the technical, safety, and environmental factors involved with drilling for oil and/or gas on Federal and Indian oil and gas leases. This information will be used to analyze and approve applications. Response to this request is mandatory only if the operator elects to initiate drilling or reentry operations on an oil and gas lease. The BLM would like you to know that you do not have to respond to this or any other Federal agency-sponsored information collection unless it displays a currently valid OMB control number.

BURDEN HOURS STATEMENT: Public reporting burden for this form is estimated to average 8 hours per response, including the time for reviewing instructions, gathering and maintaining data, and completing and reviewing the form. Direct comments regarding the burden estimate or any other aspect of this form to U.S. Department of the Interior, Bureau of Land Management (1004-0137), Bureau Information Connection Clearance Officer (WO-630), 1849 C Street, N.W., Mail Stop 401 LS, Washington, D.C. 20240.

Review and Appeal Rights

A person contesting a decision shall request a State Director review. This request must be filed within 20 working days of receipt of the Notice with the appropriate State Director (see 43 CFR 3165.3). The State Director review decision may be appealed to the Interior Board of Land Appeals, 801 North Quincy Street, Suite 300, Arlington, VA 22203 (see 43 CFR 3165.4). Contact the above listed Bureau of Land Management office for further information.

CONFIDENTIAL

PECOS DISTRICT

DRILLING CONDITIONS OF APPROVAL

OPERATOR'S NAME:	Devon Energy Production Company LP
LEASE NO.:	NMNM120904
WELL NAME & NO.:	THOROUGH BIRD 10-3 FED 711H
SURFACE HOLE FOOTAGE:	220'S & 350'/W
BOTTOM HOLE FOOTAGE:	2310'W & 330'W
LOCATION:	Section 10, T.26 S., R.31 E., NMP
COUNTY:	Eddy County, New Mexico

COA

H2S	<input type="radio"/> Yes	<input checked="" type="radio"/> No	
Potash	<input checked="" type="radio"/> None	<input type="radio"/> Secretary	<input type="radio"/> R-111-P
Cave/Karst Potential	<input type="radio"/> Low	<input checked="" type="radio"/> Medium	<input type="radio"/> High
Cave/Karst Potential	<input type="radio"/> Critical		
Variance	<input type="radio"/> None	<input checked="" type="radio"/> Flex Hose	<input type="radio"/> Other
Wellhead	<input type="radio"/> Conventional	<input type="radio"/> Multibowl	<input checked="" type="radio"/> Both
Other	<input type="checkbox"/> 4 String Area	<input type="checkbox"/> Capitan Reef	<input type="checkbox"/> WIPP
Other	<input checked="" type="checkbox"/> Fluid Filled	<input checked="" type="checkbox"/> Cement Squeeze	<input type="checkbox"/> Pilot Hole
Special Requirements	<input type="checkbox"/> Water Disposal	<input type="checkbox"/> COM	<input type="checkbox"/> Unit

A. HYDROGEN SULFIDE

Hydrogen Sulfide (H2S) monitors shall be installed prior to drilling out the surface shoe. If H2S is detected in concentrations greater than 100 ppm, the Hydrogen Sulfide area shall meet Onshore Order 6 requirements, which includes equipment and personnel/public protection items. If Hydrogen Sulfide is encountered, provide measured values and formations to the BLM.

B. CASING

Primary Casing Design:

1. The **13-3/8** inch surface casing shall be set at approximately **1443 feet** (a minimum of **70 feet (Eddy County)** into the Rustler Anhydrite and above the salt) and cemented to the surface.
 - a. If cement does not circulate to the surface, the appropriate BLM office shall be notified and a temperature survey utilizing an electronic type temperature survey with surface log readout will be used or a cement bond log shall be run to verify the top of the cement. Temperature survey will be run a minimum of six hours after pumping cement and ideally between 8-10 hours after

- completing the cement job.
- b. Wait on cement (WOC) time for a primary cement job will be a minimum of **8 hours** or 500 pounds compressive strength, whichever is greater. (This is to include the lead cement)
 - c. Wait on cement (WOC) time for a remedial job will be a minimum of 4 hours after bringing cement to surface or 500 pounds compressive strength, whichever is greater.
 - d. If cement falls back, remedial cementing will be done prior to drilling out that string.

Intermediate casing must be kept fluid filled to meet BLM minimum collapse requirement.

2. The minimum required fill of cement behind the 7-5/8 inch intermediate casing is:

Option 1 (Single Stage):

- Cement to surface. If cement does not circulate see B.1.a, c-d above.
Wait on cement (WOC) time for a primary cement job is to include the lead cement slurry due to cave/karst or potash.
Cement excess is less than 25%, more cement might be required.

Option 2:

Operator has proposed a DV tool, the depth may be adjusted as long as the cement is changed proportionally. The DV tool may be cancelled if cement circulates to surface on the first stage.

- a. First stage to DV tool: Cement to circulate. If cement does not circulate off the DV tool, contact the appropriate BLM office before proceeding with second stage cement job.
 - b. Second stage above DV tool:
 - Cement to surface. If cement does not circulate, contact the appropriate BLM office.
Wait on cement (WOC) time for a primary cement job is to include the lead cement slurry due to cave/karst or potash.
Cement excess is less than 25%, more cement might be required.
- ❖ In Medium Cave/Karst Areas if cement does not circulate to surface on the first two casing strings, the cement on the 3rd casing string must come to surface.

Operator has proposed to pump down 13-3/8" X 7-5/8" annulus. Operator must run a CBL from TD of the 7-5/8" casing to surface. Submit results to BLM.

3. The minimum required fill of cement behind the **5-1/2** inch production casing is:

- Cement should tie-back at least **200 feet** into previous casing string. Operator shall provide method of verification.

Alternate Casing Design:

4. The **13-3/8** inch surface casing shall be set at approximately **1443 feet** (a minimum of **70 feet (Eddy County)** into the Rustler Anhydrite and above the salt) and cemented to the surface.

- e. If cement does not circulate to the surface, the appropriate BLM office shall be notified and a temperature survey utilizing an electronic type temperature survey with surface log readout will be used or a cement bond log shall be run to verify the top of the cement. Temperature survey will be run a minimum of six hours after pumping cement and ideally between 8-10 hours after completing the cement job.
- f. Wait on cement (WOC) time for a primary cement job will be a minimum of **8 hours** or 500 pounds compressive strength, whichever is greater. (This is to include the lead cement)
- g. Wait on cement (WOC) time for a remedial job will be a minimum of 4 hours after bringing cement to surface or 500 pounds compressive strength, whichever is greater.
- h. If cement falls back, remedial cementing will be done prior to drilling out that string.

Intermediate casing must be kept fluid filled to meet BLM minimum collapse requirement.

5. The minimum required fill of cement behind the **8-5/8** inch intermediate casing is:

Option 1 (Single Stage):

- Cement to surface. If cement does not circulate see B.1.a, c-d above.
Wait on cement (WOC) time for a primary cement job is to include the lead cement slurry due to cave/karst or potash.
Cement excess is less than 25%, more cement might be required.

Option 2:

Operator has proposed a DV tool, the depth may be adjusted as long as the cement is changed proportionally. The DV tool may be cancelled if cement circulates to surface on the first stage.

c. First stage to DV tool: Cement to circulate. If cement does not circulate off the DV tool, contact the appropriate BLM office before proceeding with second stage cement job.

d. Second stage above DV tool:

- Cement to surface. If cement does not circulate, contact the appropriate BLM office.

Wait on cement (WOC) time for a primary cement job is to include the lead cement slurry due to cave/karst or potash.

Cement excess is less than 25%, more cement might be required.

- ❖ In Medium Cave/Karst Areas if cement does not circulate to surface on the first two casing strings, the cement on the 3rd casing string must come to surface.

Operator has proposed to pump down 13-3/8" X 8-5/8" annulus. Operator must run a CBL from TD of the 8-5/8" casing to surface. Submit results to BLM.

6. The minimum required fill of cement behind the 5-1/2 inch production casing is:

- Cement should tie-back at least **200 feet** into previous casing string. Operator shall provide method of verification.

C. PRESSURE CONTROL

1. Variance approved to use flex line from BOP to choke manifold. Manufacturer's specification to be readily available. No external damage to flex line. Flex line to be installed as straight as possible (no hard bends).'

2.

Option 1:

- a. Minimum working pressure of the blowout preventer (BOP) and related equipment (BOPE) required for drilling below the surface casing shoe shall be **5000 (5M) psi**.
- b. Minimum working pressure of the blowout preventer (BOP) and related equipment (BOPE) required for drilling below the intermediate casing shoe shall be **5000 (5M) psi**.

Option 2:

1. Operator has proposed a multi-bowl wellhead assembly. This assembly will only be tested when installed on the surface casing. Minimum working pressure of the

blowout preventer (BOP) and related equipment (BOPE) required for drilling below the surface casing shoe shall be **5000 (5M)** psi.

- a. Wellhead shall be installed by manufacturer's representatives, submit documentation with subsequent sundry.
- b. If the welding is performed by a third party, the manufacturer's representative shall monitor the temperature to verify that it does not exceed the maximum temperature of the seal.
- c. Manufacturer representative shall install the test plug for the initial BOP test.
- d. If the cement does not circulate and one inch operations would have been possible with a standard wellhead, the well head shall be cut off, cementing operations performed and another wellhead installed.
- e. Whenever any seal subject to test pressure is broken, all the tests in OOGO2.III.A.2.i must be followed.

GENERAL REQUIREMENTS

The BLM is to be notified in advance for a representative to witness:

- a. Spudding well (minimum of 24 hours)
- b. Setting and/or Cementing of all casing strings (minimum of 4 hours)
- c. BOPE tests (minimum of 4 hours)

☒ Eddy County

Call the Carlsbad Field Office, 620 East Greene St., Carlsbad, NM 88220,
(575) 361-2822

☒ Lea County

Call the Hobbs Field Station, 414 West Taylor, Hobbs NM 88240, (575)
393-3612

1. Unless the production casing has been run and cemented or the well has been properly plugged, the drilling rig shall not be removed from over the hole without prior approval.
 - a. In the event the operator has proposed to drill multiple wells utilizing a skid/walking rig. Operator shall secure the wellbore on the current well, after installing and testing the wellhead, by installing a blind flange of like pressure rating to the wellhead and a pressure gauge that can be monitored while drilling is performed on the other well(s).
 - b. When the operator proposes to set surface casing with Spudder Rig
 - Notify the BLM when moving in and removing the Spudder Rig.
 - Notify the BLM when moving in the 2nd Rig. Rig to be moved in within 90 days of notification that Spudder Rig has left the location.
 - BOP/BOPE test to be conducted per Onshore Oil and Gas Order No. 2 as soon as 2nd Rig is rigged up on well.
2. Floor controls are required for 3M or Greater systems. These controls will be on the rig floor, unobstructed, readily accessible to the driller and will be operational at all times during drilling and/or completion activities. Rig floor is defined as the area immediately around the rotary table; the area immediately above the substructure on which the draw works are located, this does not include the dog house or stairway area.
3. The record of the drilling rate along with the GR/N well log run from TD to surface (horizontal well – vertical portion of hole) shall be submitted to the BLM office as well as all other logs run on the borehole 30 days from completion. If available, a digital copy of the logs is to be submitted in addition to the paper copies. The Rustler top and top and bottom of Salt are to be recorded on the Completion Report.

A. CASING

1. Changes to the approved APD casing program need prior approval if the items substituted are of lesser grade or different casing size or are Non-API. The Operator can exchange the components of the proposal with that of superior strength (i.e. changing from J-55 to N-80, or from 36# to 40#). Changes to the approved cement program need prior approval if the altered cement plan has less volume or strength or if the changes are substantial (i.e. Multistage tool, ECP, etc.). The initial wellhead installed on the well will remain on the well with spools used as needed.
2. Wait on cement (WOC) for Potash Areas: After cementing but before commencing any tests, the casing string shall stand cemented under pressure until both of the following conditions have been met: 1) cement reaches a minimum compressive strength of 500 psi for all cement blends, 2) until cement has been in place at least 24 hours. WOC time will be recorded in the driller's log. The casing integrity test can be done (prior to the cement setting up) immediately after bumping the plug.
3. Wait on cement (WOC) for Water Basin: After cementing but before commencing any tests, the casing string shall stand cemented under pressure until both of the following conditions have been met: 1) cement reaches a minimum compressive strength of 500 psi at the shoe, 2) until cement has been in place at least 8 hours. WOC time will be recorded in the driller's log. See individual casing strings for details regarding lead cement slurry requirements. The casing integrity test can be done (prior to the cement setting up) immediately after bumping the plug.
4. Provide compressive strengths including hours to reach required 500 pounds compressive strength prior to cementing each casing string. Have well specific cement details onsite prior to pumping the cement for each casing string.
5. No pea gravel permitted for remedial or fall back remedial without prior authorization from the BLM engineer.
6. On that portion of any well approved for a 5M BOPE system or greater, a pressure integrity test of each casing shoe shall be performed. Formation at the shoe shall be tested to a minimum of the mud weight equivalent anticipated to control the formation pressure to the next casing depth or at total depth of the well. This test shall be performed before drilling more than 20 feet of new hole.
7. If hardband drill pipe is rotated inside casing, returns will be monitored for metal. If metal is found in samples, drill pipe will be pulled and rubber protectors which have a larger diameter than the tool joints of the drill pipe will be installed prior to continuing drilling operations.
8. Whenever a casing string is cemented in the R-111-P potash area, the NMOCD requirements shall be followed.

B. PRESSURE CONTROL

1. All blowout preventer (BOP) and related equipment (BOPE) shall comply with well control requirements as described in Onshore Oil and Gas Order No. 2 and API RP 53 Sec. 17.
2. If a variance is approved for a flexible hose to be installed from the BOP to the choke manifold, the following requirements apply: The flex line must meet the requirements of API 16C. Check condition of flexible line from BOP to choke manifold, replace if exterior is damaged or if line fails test. Line to be as straight as possible with no hard bends and is to be anchored according to Manufacturer's requirements. The flexible hose can be exchanged with a hose of equal size and equal or greater pressure rating. Anchor requirements, specification sheet and hydrostatic pressure test certification matching the hose in service, to be onsite for review. These documents shall be posted in the company man's trailer and on the rig floor.
3. 5M or higher system requires an HCR valve, remote kill line and annular to match. The remote kill line is to be installed prior to testing the system and tested to stack pressure.
4. If the operator has proposed a multi-bowl wellhead assembly in the APD. The following requirements must be met:
 - a. Wellhead shall be installed by manufacturer's representatives, submit documentation with subsequent sundry.
 - b. If the welding is performed by a third party, the manufacturer's representative shall monitor the temperature to verify that it does not exceed the maximum temperature of the seal.
 - c. Manufacturer representative shall install the test plug for the initial BOP test.
 - d. Whenever any seal subject to test pressure is broken, all the tests in OOGO2.III.A.2.i must be followed.
 - e. If the cement does not circulate and one inch operations would have been possible with a standard wellhead, the well head shall be cut off, cementing operations performed and another wellhead installed.
5. The appropriate BLM office shall be notified a minimum of 4 hours in advance for a representative to witness the tests.
 - a. In a water basin, for all casing strings utilizing slips, these are to be set as soon as the crew and rig are ready and any fallback cement remediation has been done. The casing cut-off and BOP installation can be initiated four hours after installing the slips, which will be approximately six hours after bumping the plug. For those casing strings not using slips, the minimum wait time before cut-off is eight hours after bumping the plug. BOP/BOPE testing can begin after cut-off or once cement reaches 500 psi compressive strength (including lead when specified), whichever is greater. However, if the float does not

hold, cut-off cannot be initiated until cement reaches 500 psi compressive strength (including lead when specified).

- b. In potash areas, for all casing strings utilizing slips, these are to be set as soon as the crew and rig are ready and any fallback cement remediation has been done. For all casing strings, casing cut-off and BOP installation can be initiated at twelve hours after bumping the plug. However, **no tests** shall commence until the cement has had a minimum of 24 hours setup time, except the casing pressure test can be initiated immediately after bumping the plug (only applies to single stage cement jobs).
- c. The tests shall be done by an independent service company utilizing a test plug not a cup or J-packer. The operator also has the option of utilizing an independent tester to test without a plug (i.e. against the casing) pursuant to Onshore Order 2 with the pressure not to exceed 70% of the burst rating for the casing. Any test against the casing must meet the WOC time for water basin (8 hours) or potash (24 hours) or 500 pounds compressive strength, whichever is greater, prior to initiating the test (see casing segment as lead cement may be critical item).
- d. The test shall be run on a 5000 psi chart for a 2-3M BOP/BOP, on a 10000 psi chart for a 5M BOP/BOPE and on a 15000 psi chart for a 10M BOP/BOPE. If a linear chart is used, it shall be a one hour chart. A circular chart shall have a maximum 2 hour clock. If a twelve hour or twenty-four hour chart is used, tester shall make a notation that it is run with a two hour clock.
- e. The results of the test shall be reported to the appropriate BLM office.
- f. All tests are required to be recorded on a calibrated test chart. A copy of the BOP/BOPE test chart and a copy of independent service company test will be submitted to the appropriate BLM office.
- g. The BOP/BOPE test shall include a low pressure test from 250 to 300 psi. The test will be held for a minimum of 10 minutes if test is done with a test plug and 30 minutes without a test plug. This test shall be performed prior to the test at full stack pressure.
- h. BOP/BOPE must be tested by an independent service company within 500 feet of the top of the Wolfcamp formation if the time between the setting of the intermediate casing and reaching this depth exceeds 20 days. This test does not exclude the test prior to drilling out the casing shoe as per Onshore Order No. 2.

C. DRILLING MUD

Mud system monitoring equipment, with derrick floor indicators and visual and audio alarms, shall be operating before drilling into the Wolfcamp formation, and shall be used until production casing is run and cemented.

D. WASTE MATERIAL AND FLUIDS

All waste (i.e. drilling fluids, trash, salts, chemicals, sewage, gray water, etc.) created as a result of drilling operations and completion operations shall be safely contained and disposed of properly at a waste disposal facility. No waste material or fluid shall be disposed of on the well location or surrounding area.

Porto-johns and trash containers will be on-location during fracturing operations or any other crew-intensive operations.

PECOS DISTRICT SURFACE USE CONDITIONS OF APPROVAL

Thoroughbred 10-3 Fed Com 621H (Pad 1)
220 FSL, 380 FWL Section 10, T.26., R. 31E.
Thoroughbred 10-3 Fed Com 711H (Pad 1)
220 FSL, 350 FWL Section 10, T.26., R. 31E.
Thoroughbred 10-3 Fed Com 731H (Pad 1)
220 FSL, 410 FWL Section 10, T.26., R. 31E.
Thoroughbred 10-3 Fed Com 712H (Pad 2)
220 FSL, 1470 FWL Section 10, T.26., R. 31E.
Thoroughbred 10-3 Fed Com 332H (Pad 2)
220 FSL, 1500 FWL Section 10, T.26., R. 31E.
Thoroughbred 10-3 Fed Com 732H (Pad 2)
220 FSL, 1530 FWL Section 10, T.26., R. 31E.

TABLE OF CONTENTS

Standard Conditions of Approval (COA) apply to this APD. If any deviations to these standards exist or special COAs are required, the section with the deviation or requirement will be checked below.

- ☐ **General Provisions**
- ☐ **Permit Expiration**
- ☐ **Archaeology, Paleontology, and Historical Sites**
- ☐ **Noxious Weeds**
- ☒ **Special Requirements**
 - Phantom Banks SMA
 - Hydrology
 - Range
 - Karst
- ☐ **Construction**
 - Notification
 - Topsoil
 - Closed Loop System
 - Federal Mineral Material Pits
 - Well Pads
 - Roads
- ☐ **Road Section Diagram**
- ☒ **Production (Post Drilling)**
 - Well Structures & Facilities
 - Pipelines
 - Electric Lines
- ☐ **Interim Reclamation**
- ☐ **Final Abandonment & Reclamation**

I. GENERAL PROVISIONS

The approval of the Application For Permit To Drill (APD) is in compliance with all applicable laws and regulations: 43 Code of Federal Regulations 3160, the lease terms, Onshore Oil and Gas Orders, Notices To Lessees, New Mexico Oil Conservation Division (NMOCD) Rules, National Historical Preservation Act As Amended, and instructions and orders of the Authorized Officer. Any request for a variance shall be submitted to the Authorized Officer on Form 3160-5, Sundry Notices and Report on Wells.

II. PERMIT EXPIRATION

If the permit terminates prior to drilling and drilling cannot be commenced within 60 days after expiration, an operator is required to submit Form 3160-5, Sundry Notices and Reports on Wells, requesting surface reclamation requirements for any surface disturbance. However, if the operator will be able to initiate drilling within 60 days after the expiration of the permit, the operator must have set the conductor pipe in order to allow for an extension of 60 days beyond the expiration date of the APD. (Filing of a Sundry Notice is required for this 60 day extension.)

III. ARCHAEOLOGICAL, PALEONTOLOGY & HISTORICAL SITES

Any cultural and/or paleontological resource discovered by the operator or by any person working on the operator's behalf shall immediately report such findings to the Authorized Officer. The operator is fully accountable for the actions of their contractors and subcontractors. The operator shall suspend all operations in the immediate area of such discovery until written authorization to proceed is issued by the Authorized Officer. An evaluation of the discovery shall be made by the Authorized Officer to determine the appropriate actions that shall be required to prevent the loss of significant cultural or scientific values of the discovery. The operator shall be held responsible for the cost of the proper mitigation measures that the Authorized Officer assesses after consultation with the operator on the evaluation and decisions of the discovery. Any unauthorized collection or disturbance of cultural or paleontological resources may result in a shutdown order by the Authorized Officer.

IV. NOXIOUS WEEDS

The operator shall be held responsible if noxious weeds become established within the areas of operations. Weed control shall be required on the disturbed land where noxious weeds exist, which includes the roads, pads, associated pipeline corridor, and adjacent land affected by the establishment of weeds due to this action. The operator shall consult with the Authorized Officer for acceptable weed control methods, which include following EPA and BLM requirements and policies.

V. SPECIAL REQUIREMENT(S)

Phantom Banks SMA

Surface disturbance will not be allowed within up to 200 meters of active heronries or by delaying activity for up to 120 days, or a combination of both.

Hydrology:

The entire well pad(s) will be bermed to prevent oil, salt, and other chemical contaminants from leaving the well pad. The compacted berm shall be constructed at a minimum of 12 inches with impermeable mineral material (e.g. caliche). Topsoil shall not be used to construct the berm. No water flow from the uphill side(s) of the pad shall be allowed to enter the well pad. The integrity of the berm shall be maintained around the surfaced pad throughout the life of the well and around the downsized pad after interim reclamation has been completed. Any water erosion that may occur due to the construction of the well pad during the life of the well will be quickly corrected and proper measures will be taken to prevent future erosion. Stockpiling of topsoil is required. The top soil shall be stockpiled in an appropriate location to prevent loss of soil due to water or wind erosion and not used for berming or erosion control. If fluid collects within the bermed area, the fluid must be vacuumed into a safe container and disposed of properly at a state approved facility.

Tank battery locations will be lined and bermed. A 20 mil permanent liner will be installed with a 4 oz. felt backing to prevent tears or punctures. Tank battery berms must be large enough to contain 1 ½ times the content of the largest tank or 24 hour production, whichever is greater. Automatic shut off, check valves, or similar systems will be installed for tanks to minimize the effects of catastrophic line failures used in production or drilling.

When crossing ephemeral drainages the pipeline(s) will be buried to a minimum depth of 48 inches from the top of pipe to ground level. Erosion control methods such as gabions and/or rock aprons should be placed on both up and downstream sides of the pipeline crossing. In addition, curled (weed free) wood/straw fiber wattles/logs and/or silt fences should be placed on the downstream side for sediment control during construction and maintained until soils and vegetation have stabilized. Water bars should be placed within the ROW to divert and dissipate surface runoff. A pipeline access road is not permitted to cross these ephemeral drainages. Traffic should be diverted to a preexisting route. Additional seeding may be required in floodplains and drainages to restore energy dissipating vegetation.

Prior to pipeline installation/construction a leak detection plan will be developed. The method(s) could incorporate gauges to detect pressure drops, siting valves and lines so they can be visually inspected periodically or installing electronic sensors to alarm when a leak is present. The leak detection plan will incorporate an automatic shut off system that will be installed for proposed pipelines to minimize the effects of an undesirable event.

Any water erosion that may occur due to the construction of overhead electric line and during the life of the power line will be quickly corrected and proper measures will be taken to prevent future erosion. A power pole should not be placed in drainages, playas, wetlands, riparian areas, or floodplains and must span across the features at a distance away that would not promote further erosion.

Livestock Watering Requirement

Any damage to structures that provide water to livestock throughout the life of the well, caused by operations from the well site, must be immediately corrected by the operator. The operator must notify the BLM office (575-234-5972) and the private surface landowner or the grazing allotment holder if any damage occurs to structures that provide water to livestock.

Fence Requirement

Where entry is granted across a fence line, the fence must be braced and tied off on both sides of the passageway with H-braces prior to cutting. Once the work is completed, the fence will be restored to its prior condition, or better. The operator shall notify the private surface landowner or the grazing allotment holder prior to crossing any fence(s).

The operator must contact the allotment holder prior to construction to identify the location of the pipeline. The operator must take measures to protect the pipeline from compression or other damages. If the pipeline is damaged or compromised in any way near the proposed project as a result of oil and gas activity, the operator is responsible for repairing the pipeline immediately. The operator must notify the BLM office (575-234-5972) and the private surface landowner or the grazing allotment holder if any damage occurs to structures that provide water to livestock.

During construction, the proponent shall minimize disturbance to existing fences, water lines, troughs, windmills, and other improvements on public lands. The proponent is required to promptly repair improvements to at least their former state. Functional use of these improvements will be maintained at all times. The holder will contact the grazing permittee/allottee prior to disturbing any range improvement projects. When necessary to pass through a fence line, the fence shall be braced on both sides of the passageway prior to cutting of the fence. No permanent gates will be allowed unless approved by the Authorized Officer.

CONSTRUCTION MITIGATION

In order to mitigate the impacts from construction activities on cave and karst resources, the following Conditions of Approval will apply to this APD or project:

- In the event that any underground voids are encountered during construction activities, construction activities will be halted and the BLM will be notified immediately.
- No blasting – the pad and roads will be constructed and leveled by adding the necessary fill and caliche.
- All pads will be bermed to minimize the impact of any spilled contaminants

DRILLING MITIGATION

Federal regulations and standard Conditions of Approval applied to all APDs require that adequate measures are taken to prevent contamination to the environment. Due to the extreme sensitivity of the cave and karst resources in this project area, the following additional Conditions of Approval will be added to this APD.

To prevent cave and karst resource contamination the following will be required.

- Closed mud system using steel tanks - all fluids and cuttings will be hauled off-site and disposed of properly
- Rotary drilling with fresh water where cave or karst features are expected to prevent contamination of freshwater aquifers.
- Directional drilling is only allowed at depths greater than 100 feet below the cave occurrence zone to prevent additional impacts resulting from directional drilling.
- Lost circulation zones will be logged and reported in the drilling report so BLM can assess the situation and work with the operator on corrective actions.
- Additional drilling, casing, and cementing procedures to protect cave zones and fresh water aquifers. See drilling COAs.

PRODUCTION MITIGATION

In order to mitigate the impacts from production activities and due to the nature of karst terrane, the following Conditions of Approval will apply to this APD:

- Tank battery locations and facilities will be bermed and lined with a 20 mil thick permanent liner that has a 4 oz. felt backing, or equivalent, to prevent tears or punctures. Tank battery berms must be large enough to contain 1 ½ times the content of the largest tank.
- Development and implementation of a leak detection system to provide an early alert to operators when a leak has occurred.
- Automatic shut off, check valves, or similar systems will be installed for pipelines and tanks to minimize the effects of catastrophic line failures used in production or drilling.

RESIDUAL AND CUMULATIVE MITIGATION

- The operator will perform annual pressure monitoring on all casing annuli and reported in a sundry notice. If the test results indicated a casing failure has occurred, remedial action will be taken to correct the problem to the BLM's approval.

PLUGGING AND ABANDONMENT MITIGATION

- Upon well abandonment in high cave karst areas additional plugging conditions of approval may be required. The BLM will assess the situation and work with the operator to ensure proper plugging of the wellbore.

VI. CONSTRUCTION

A. NOTIFICATION

The BLM shall administer compliance and monitor construction of the access road and well pad. Notify the Carlsbad Field Office at (575) 234-5909 at least 3 working days prior to commencing construction of the access road and/or well pad.

When construction operations are being conducted on this well, the operator shall have the approved APD and Conditions of Approval (COA) on the well site and they shall be made available upon request by the Authorized Officer.

B. TOPSOIL

The operator shall strip the top portion of the soil (root zone) from the entire well pad area and stockpile the topsoil along the edge of the well pad as depicted in the APD. The root zone is typically six (6) inches in depth. All the stockpiled topsoil will be redistributed over the interim reclamation areas. Topsoil shall not be used for berming the pad or facilities. For final reclamation, the topsoil shall be spread over the entire pad area for seeding preparation.

Other subsoil (below six inches) stockpiles must be completely segregated from the topsoil stockpile. Large rocks or subsoil clods (not evident in the surrounding terrain) must be buried within the approved area for interim and final reclamation.

C. CLOSED LOOP SYSTEM

Tanks are required for drilling operations: No Pits.

The operator shall properly dispose of drilling contents at an authorized disposal site.

D. FEDERAL MINERAL MATERIALS PIT

Payment shall be made to the BLM prior to removal of any federal mineral materials. Call the Carlsbad Field Office at (575) 234-5972.

E. WELL PAD SURFACING

Surfacing of the well pad is not required.

If the operator elects to surface the well pad, the surfacing material may be required to be removed at the time of reclamation. The well pad shall be constructed in a manner which creates the smallest possible surface disturbance, consistent with safety and operational needs.

F. EXCLOSURE FENCING (CELLARS & PITS)

Exclosure Fencing

The operator will install and maintain exclosure fencing for all open well cellars to prevent access to public, livestock, and large forms of wildlife before and after drilling operations until the pit is free of fluids and the operator initiates backfilling. (For examples of exclosure fencing design, refer to BLM's Oil and Gas Gold Book, Exclosure Fence Illustrations, Figure 1, Page 18.)

G. ON LEASE ACCESS ROADS**Road Width**

The access road shall have a driving surface that creates the smallest possible surface disturbance and does not exceed fourteen (14) feet in width. The maximum width of surface disturbance, when constructing the access road, shall not exceed twenty-five (25) feet.

Surfacing

Surfacing material is not required on the new access road driving surface. If the operator elects to surface the new access road or pad, the surfacing material may be required to be removed at the time of reclamation.

Where possible, no improvements should be made on the unsurfaced access road other than to remove vegetation as necessary, road irregularities, safety issues, or to fill low areas that may sustain standing water.

The Authorized Officer reserves the right to require surfacing of any portion of the access road at any time deemed necessary. Surfacing may be required in the event the road deteriorates, erodes, road traffic increases, or it is determined to be beneficial for future field development. The surfacing depth and type of material will be determined at the time of notification.

Crowning

Crowning shall be done on the access road driving surface. The road crown shall have a grade of approximately 2% (i.e., a 1" crown on a 14' wide road). The road shall conform to Figure 1; cross section and plans for typical road construction.

Ditching

Ditching shall be required on both sides of the road.

Turnouts

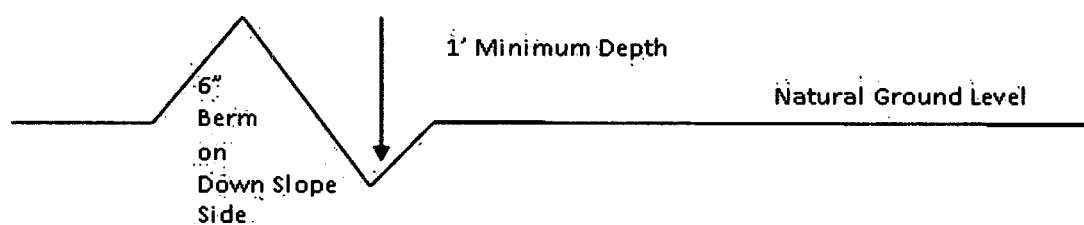
Vehicle turnouts shall be constructed on the road. Turnouts shall be intervisible with interval spacing distance less than 1000 feet. Turnouts shall conform to Figure 1; cross section and plans for typical road construction.

Drainage

Drainage control systems shall be constructed on the entire length of road (e.g. ditches, sidehill outslowing and insloping, lead-off ditches, culvert installation, and low water crossings).

A typical lead-off ditch has a minimum depth of 1 foot below and a berm of 6 inches above natural ground level. The berm shall be on the down-slope side of the lead-off ditch.

Cross Section of a Typical Lead-off Ditch



All lead-off ditches shall be graded to drain water with a 1 percent minimum to 3 percent maximum ditch slope. The spacing interval are variable for lead-off ditches and shall be determined according to the formula for spacing intervals of lead-off ditches, but may be amended depending upon existing soil types and centerline road slope (in %);

Formula for Spacing Interval of Lead-off Ditches

Example - On a 4% road slope that is 400 feet long, the water flow shall drain water into a lead-off ditch. Spacing interval shall be determined by the following formula:

$$400 \text{ foot road with } 4\% \text{ road slope: } \frac{400'}{4\%} + 100' = 200' \text{ lead-off ditch interval}$$

Cattle guards

An appropriately sized cattle guard sufficient to carry out the project shall be installed and maintained at fence/road crossings. Any existing cattle guards on the access road route shall be repaired or replaced if they are damaged or have deteriorated beyond practical use. The operator shall be responsible for the condition of the existing cattle guards that are in place and are utilized during lease operations.

Fence Requirement

Where entry is granted across a fence line, the fence shall be braced and tied off on both sides of the passageway prior to cutting. The operator shall notify the private surface landowner or the grazing allotment holder prior to crossing any fences.

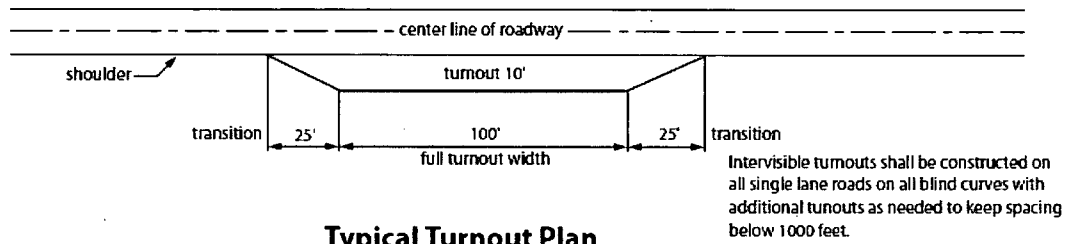
Public Access

Public access on this road shall not be restricted by the operator without specific written approval granted by the Authorized Officer.

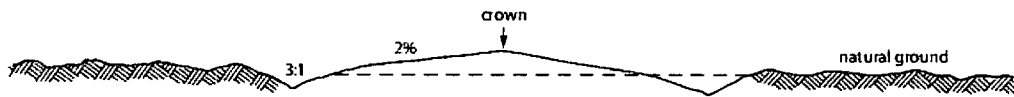
Construction Steps

1. Salvage topsoil
2. Construct road

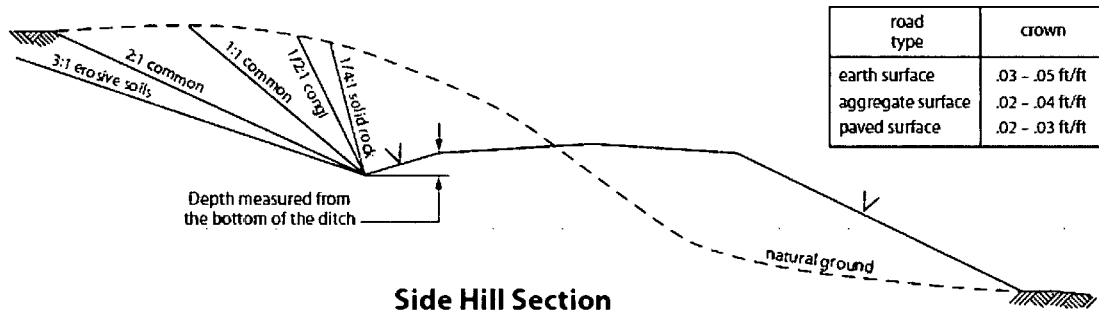
3. Redistribute topsoil
4. Revegetate slopes



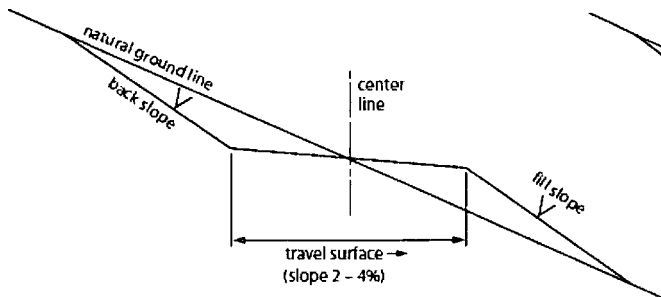
Typical Turnout Plan



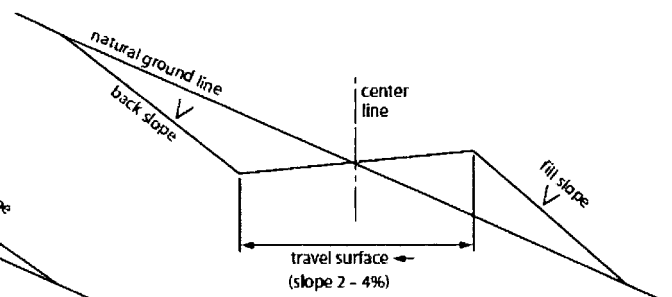
Level Ground Section



Side Hill Section



Typical Outsloped Section



Typical Insloped Section

Figure 1. Cross-sections and plans for typical road sections representative of BLM resource or FS local and higher-class roads.

VII. PRODUCTION (POST DRILLING)

A. WELL STRUCTURES & FACILITIES

Placement of Production Facilities

Production facilities should be placed on the well pad to allow for maximum interim recontouring and revegetation of the well location.

Exclosure Netting (Open-top Tanks)

Immediately following active drilling or completion operations, the operator will take actions necessary to prevent wildlife and livestock access, including avian wildlife, to all open-topped tanks that contain or have the potential to contain salinity sufficient to cause harm to wildlife or livestock, hydrocarbons, or Resource Conservation and Recovery Act of 1976-exempt hazardous substances. At a minimum, the operator will net, screen, or cover open-topped tanks to exclude wildlife and livestock and prevent mortality. If the operator uses netting, the operator will cover and secure the open portion of the tank to prevent wildlife entry. The operator will net, screen, or cover the tanks until the operator removes the tanks from the location or the tanks no longer contain substances that could be harmful to wildlife or livestock. Use a maximum netting mesh size of 1 ½ inches. The netting must not be in contact with fluids and must not have holes or gaps.

Chemical and Fuel Secondary Containment and Exclosure Screening

The operator will prevent all hazardous, poisonous, flammable, and toxic substances from coming into contact with soil and water. At a minimum, the operator will install and maintain an impervious secondary containment system for any tank or barrel containing hazardous, poisonous, flammable, or toxic substances sufficient to contain the contents of the tank or barrel and any drips, leaks, and anticipated precipitation. The operator will dispose of fluids within the containment system that do not meet applicable state or U. S. Environmental Protection Agency livestock water standards in accordance with state law; the operator must not drain the fluids to the soil or ground. The operator will design, construct, and maintain all secondary containment systems to prevent wildlife and livestock exposure to harmful substances. At a minimum, the operator will install effective wildlife and livestock exclosure systems such as fencing, netting, expanded metal mesh, lids, and grate covers. Use a maximum netting mesh size of 1 ½ inches.

Open-Vent Exhaust Stack Exclosures

The operator will construct, modify, equip, and maintain all open-vent exhaust stacks on production equipment to prevent birds and bats from entering, and to discourage perching, roosting, and nesting. (*Recommended exclosure structures on open-vent exhaust stacks are in the shape of a cone.*) Production equipment includes, but may not be limited to, tanks, heater-treaters, separators, dehydrators, flare stacks, in-line units, and compressor mufflers.

Containment Structures

Proposed production facilities such as storage tanks and other vessels will have a secondary containment structure that is constructed to hold the capacity of 1.5 times the largest tank, plus freeboard to account for precipitation, unless more stringent protective requirements are deemed necessary.

Painting Requirement

All above-ground structures including meter housing that are not subject to safety requirements shall be painted a flat non-reflective paint color, **Shale Green** from the BLM Standard Environmental Color Chart (CC-001: June 2008).

B. PIPELINES

BURIED PIPELINE STIPULATIONS

A copy of the application (Grant, APD, or Sundry Notice) and attachments, including conditions of approval, survey plat and/or map, will be on location during construction. BLM personnel may request to you a copy of your permit during construction to ensure compliance with all stipulations.

Holder agrees to comply with the following stipulations to the satisfaction of the Authorized Officer:

1. The Holder shall indemnify the United States against any liability for damage to life or property arising from the occupancy or use of public lands under this grant.
2. The Holder shall comply with all applicable Federal laws and regulations existing or hereafter enacted or promulgated. In any event, the holder shall comply with the Toxic Substances Control Act of 1976 as amended, 15 USC 2601 et seq. (1982) with regards to any toxic substances that are used, generated by or stored on the right-of-way or on facilities authorized under this right-of-way grant. (See 40 CFR Part 702-799 and especially, provisions on polychlorinated biphenyls, 40 CFR 761.1-761.193.) Additionally, any release of toxic substances (leaks, spills, etc.) in excess of the reportable quantity established by 40 CFR Part 117 shall be reported as required by the Comprehensive Environmental Response, Compensation, and Liability Act, section 102b. A copy of any report required or requested by any Federal agency or State government as a result of a reportable release or spill of any toxic substances shall be furnished to the authorized officer concurrent with the filing of the reports to the involved Federal agency or State government.
3. The holder agrees to indemnify the United States against any liability arising from the release of any hazardous substance or hazardous waste (as these terms are defined in the Comprehensive Environmental Response, Compensation and Liability Act of 1980, 42 U.S.C. 9601, et seq. or the Resource Conservation and Recovery Act, 42 U.S.C.6901, et seq.) on the Right-of-Way (unless the release or threatened release is wholly unrelated to the Right-of-Way holder's activity on the Right-of-Way), or resulting from the activity of the Right-of-Way holder on the Right-of-Way. This agreement applies without regard to whether a release is caused by the holder, its agent, or unrelated third parties.

4. If, during any phase of the construction, operation, maintenance, or termination of the pipeline, any oil or other pollutant should be discharged from the pipeline system, impacting Federal lands, the control and total removal, disposal, and cleaning up of such oil or other pollutant, wherever found, shall be the responsibility of holder, regardless of fault. Upon failure of holder to control, dispose of, or clean up such discharge on or affecting Federal lands, or to repair all damages resulting therefrom, on the Federal lands, the Authorized Officer may take such measures as he deems necessary to control and clean up the discharge and restore the area, including where appropriate, the aquatic environment and fish and wildlife habitats, at the full expense of the holder. Such action by the Authorized Officer shall not relieve holder of any responsibility as provided herein.

5. All construction and maintenance activity will be confined to the authorized right-of-way.
6. The pipeline will be buried with a minimum cover of 36 inches between the top of the pipe and ground level.
7. The maximum allowable disturbance for construction in this right-of-way will be 30 feet:
- Blading of vegetation within the right-of-way will be allowed: maximum width of blading operations will not exceed 20 feet. The trench is included in this area. (*Blading is defined as the complete removal of brush and ground vegetation.*)
 - Clearing of brush species within the right-of-way will be allowed: maximum width of clearing operations will not exceed 30 feet. The trench and bladed area are included in this area. (*Clearing is defined as the removal of brush while leaving ground vegetation (grasses, weeds, etc.) intact. Clearing is best accomplished by holding the blade 4 to 6 inches above the ground surface.*)
 - The remaining area of the right-of-way (if any) shall only be disturbed by compressing the vegetation. (*Compressing can be caused by vehicle tires, placement of equipment, etc.*)
8. The holder shall stockpile an adequate amount of topsoil where blading is allowed. The topsoil to be stripped is approximately 6 inches in depth. The topsoil will be segregated from other spoil piles from trench construction. The topsoil will be evenly distributed over the bladed area for the preparation of seeding.
9. The holder shall minimize disturbance to existing fences and other improvements on public lands. The holder is required to promptly repair improvements to at least their former state. Functional use of these improvements will be maintained at all times. The holder will contact the owner of any improvements prior to disturbing them. When necessary to pass through a fence line, the fence shall be braced on both sides of the passageway prior to cutting of the fence. No permanent gates will be allowed unless approved by the Authorized Officer.
10. Vegetation, soil, and rocks left as a result of construction or maintenance activity will be randomly scattered on this right-of-way and will not be left in rows, piles, or berms, unless otherwise approved by the Authorized Officer. The entire right-of-way shall be recontoured to match the surrounding landscape. The backfilled soil shall be compacted and a 6 inch berm will be left over the ditch line to allow for settling back to grade.
11. In those areas where erosion control structures are required to stabilize soil conditions, the holder will install such structures as are suitable for the specific soil conditions being encountered and which are in accordance with sound resource management practices.

12. The holder will reseed all disturbed areas. Seeding will be done according to the attached seeding requirements, using the following seed mix.

- | | |
|--|--|
| <input type="checkbox"/> seed mixture 1 | <input type="checkbox"/> seed mixture 3 |
| <input checked="" type="checkbox"/> seed mixture 2 | <input type="checkbox"/> seed mixture 4 |
| <input type="checkbox"/> seed mixture 2/LPC | <input type="checkbox"/> Aplomado Falcon Mixture |

13. All above-ground structures not subject to safety requirements shall be painted by the holder to blend with the natural color of the landscape. The paint used shall be color which simulates "Standard Environmental Colors" – **Shale Green**, Munsell Soil Color No. 5Y 4/2.

14. The pipeline will be identified by signs at the point of origin and completion of the right-of-way and at all road crossings. At a minimum, signs will state the holder's name, BLM serial number, and the product being transported. All signs and information thereon will be posted in a permanent, conspicuous manner, and will be maintained in a legible condition for the life of the pipeline.

15. The holder shall not use the pipeline route as a road for purposes other than routine maintenance as determined necessary by the Authorized Officer in consultation with the holder before maintenance begins. The holder will take whatever steps are necessary to ensure that the pipeline route is not used as a roadway. As determined necessary during the life of the pipeline, the Authorized Officer may ask the holder to construct temporary deterrence structures.

16. Any cultural and/or paleontological resources (historic or prehistoric site or object) discovered by the holder, or any person working on his behalf, on public or Federal land shall be immediately reported to the Authorized Officer. Holder shall suspend all operations in the immediate area of such discovery until written authorization to proceed is issued by the Authorized Officer. An evaluation of the discovery will be made by the Authorized Officer to determine appropriate actions to prevent the loss of significant cultural or scientific values. The holder will be responsible for the cost of evaluation and any decision as to proper mitigation measures will be made by the Authorized Officer after consulting with the holder.

17. The operator shall be held responsible if noxious weeds become established within the areas of operations. Weed control shall be required on the disturbed land where noxious weeds exist, which includes associated roads, pipeline corridor and adjacent land affected by the establishment of weeds due to this action. The operator shall consult with the Authorized Officer for acceptable weed control methods, which include following EPA and BLM requirements and policies.

18. Escape Ramps - The operator will construct and maintain pipeline/utility trenches that are not otherwise fenced, screened, or netted to prevent livestock, wildlife, and humans from becoming entrapped. At a minimum, the operator will construct and maintain escape ramps, ladders, or

other methods of avian and terrestrial wildlife escape in the trenches according to the following criteria:

- a. Any trench left open for eight (8) hours or less is not required to have escape ramps; however, before the trench is backfilled, the contractor/operator shall inspect the trench for wildlife, remove all trapped wildlife, and release them at least 100 yards from the trench.
- b. For trenches left open for eight (8) hours or more, earthen escape ramps (built at no more than a 30 degree slope and spaced no more than 500 feet apart) shall be placed in the trench.

C. ELECTRIC LINES

STANDARD STIPULATIONS FOR OVERHEAD ELECTRIC DISTRIBUTION LINES

A copy of the grant and attachments, including stipulations, survey plat and/or map, will be on location during construction. BLM personnel may request to you a copy of your permit during construction to ensure compliance with all stipulations.

Holder agrees to comply with the following stipulations to the satisfaction of the Authorized Officer:

1. The holder shall indemnify the United States against any liability for damage to life or property arising from the occupancy or use of public lands under this grant.
2. The holder shall comply with all applicable Federal laws and regulations existing or hereafter enacted or promulgated. In any event, the holder shall comply with the Toxic Substances Control Act of 1976 as amended, 15 USC 2601 et seq. (1982) with regards to any toxic substances that are used, generated by or stored on the right-of-way or on facilities authorized under this right-of-way grant. (See 40 CFR, Part 702-799 and especially, provisions on polychlorinated biphenyls, 40 CFR 761.1-761.193.) Additionally, any release of toxic substances (leaks, spills, etc.) in excess of the reportable quantity established by 40 CFR, Part 117 shall be reported as required by the Comprehensive Environmental Response, Compensation, and Liability Act, section 102b. A copy of any report required or requested by any Federal agency or State government as a result of a reportable release or spill of any toxic substances shall be furnished to the authorized officer concurrent with the filing of the reports to the involved Federal agency or State government.
3. The holder agrees to indemnify the United States against any liability arising from the release of any hazardous substance or hazardous waste (as these terms are defined in the Comprehensive Environmental Response, Compensation and Liability Act of 1980, 42 U.S.C. 9601, et seq. or the Resource Conservation and Recovery Act, 42 U.S.C. 6901, et seq.) on the Right-of-Way (unless the release or threatened release is wholly unrelated to the Right-of-Way holder's activity on the Right-of-Way), or resulting from the activity of the Right-of-Way holder on the Right-of-Way. This agreement applies without regard to whether a release is caused by the holder, its agent, or unrelated third parties.

4. There will be no clearing or blading of the right-of-way unless otherwise agreed to in writing by the Authorized Officer.

5. Power lines shall be constructed and designed in accordance to standards outlined in "Suggested Practices for Avian Protection on Power lines: The State of the Art in 2006" Edison Electric Institute, APLIC, and the California Energy Commission 2006 . The holder shall assume the burden and expense of proving that pole designs not shown in the above publication deter raptor perching, roosting, and nesting. Such proof shall be provided by a raptor expert approved by the Authorized Officer. The BLM reserves the right to require modification or additions to all powerline structures placed on this right-of-way, should they be necessary to ensure the safety of large perching birds. Such modifications and/or additions shall be made by the holder without liability or expense to the United States.

Raptor deterrence will consist of but not limited to the following: triangle perch discouragers shall be placed on each side of the cross arms and a nonconductive perching deterrence shall be placed on all vertical poles that extend past the cross arms.

6. The holder shall minimize disturbance to existing fences and other improvements on public lands. The holder is required to promptly repair improvements to at least their former state. Functional use of these improvements will be maintained at all times. The holder will contact the owner of any improvements prior to disturbing them. When necessary to pass through a fence line, the fence shall be braced on both sides of the passageway prior to cutting the fence. No permanent gates will be allowed unless approved by the Authorized Officer.

7. The BLM serial number assigned to this authorization shall be posted in a permanent, conspicuous manner where the power line crosses roads and at all serviced facilities. Numbers will be at least two inches high and will be affixed to the pole nearest the road crossing and at the facilities served.

8. Upon cancellation, relinquishment, or expiration of this grant, the holder shall comply with those abandonment procedures as prescribed by the Authorized Officer.

9. All surface structures (poles, lines, transformers, etc.) shall be removed within 180 days of abandonment, relinquishment, or termination of use of the serviced facility or facilities or within 180 days of abandonment, relinquishment, cancellation, or expiration of this grant, whichever comes first. This will not apply where the power line extends service to an active, adjoining facility or facilities.

10. Any cultural and/or paleontological resource (historic or prehistoric site or object) discovered by the holder, or any person working on his behalf, on public or Federal land shall be immediately reported to the Authorized Officer. Holder shall suspend all operations in the immediate area of such discovery until written authorization to proceed is issued by the Authorized Officer. An evaluation of the discovery will be made by the

Authorized Officer to determine appropriate actions to prevent the loss of significant cultural or scientific values. The holder will be responsible for the cost of evaluation and any decision as to proper mitigation measures will be made by the Authorized Officer after consulting with the holder.

11. Special Stipulations:

- For reclamation remove poles, lines, transformer, etc. and dispose of properly.
- Fill in any holes from the poles removed.

VIII. INTERIM RECLAMATION

During the life of the development, all disturbed areas not needed for active support of production operations should undergo interim reclamation in order to minimize the environmental impacts of development on other resources and uses.

Within six (6) months of well completion, operators should work with BLM surface management specialists (Jim Amos: 575-234-5909) to devise the best strategies to reduce the size of the location. Interim reclamation should allow for remedial well operations; as well as safe and efficient removal of oil and gas.

During reclamation, the removal of caliche is important to increasing the success of revegetating the site. Removed caliche that is free of contaminants may be used for road repairs, fire walls or for building other roads and locations. In order to operate the well or complete workover operations, it may be necessary to drive, park and operate on restored interim vegetation within the previously disturbed area. Disturbing revegetated areas for production or workover operations will be allowed. If there is significant disturbance and loss of vegetation, the area will need to be revegetated. Communicate with the appropriate BLM office for any exceptions/exemptions if needed.

All disturbed areas after they have been satisfactorily prepared need to be reseeded with the seed mixture provided below.

Upon completion of interim reclamation, the operator shall submit a Sundry Notices and Reports on Wells, Subsequent Report of Reclamation (Form 3160-5).

IX. FINAL ABANDONMENT & RECLAMATION

At final abandonment, well locations, production facilities, and access roads must undergo "final" reclamation so that the character and productivity of the land are restored.

Earthwork for final reclamation must be completed within six (6) months of well plugging. All pads, pits, facility locations and roads must be reclaimed to a satisfactory revegetated, safe, and stable condition, unless an agreement is made with the landowner or BLM to keep the road and/or pad intact.

After all disturbed areas have been satisfactorily prepared, these areas need to be revegetated with the seed mixture provided below. Seeding should be accomplished by drilling on the contour whenever practical or by other approved methods. Seeding may need to be repeated until revegetation is successful, as determined by the BLM.

Operators shall contact a BLM surface protection specialist prior to surface abandonment operations for site specific objectives (Jim Amos: 575-234-5909).

Ground-level Abandoned Well Marker to avoid raptor perching: Upon the plugging and subsequent abandonment of the well, the well marker will be installed at ground level on a plate containing the pertinent information for the plugged well.

Seed Mixture 2, for Sandy Sites

The holder shall seed all disturbed areas with the seed mixture listed below. The seed mixture shall be planted in the amounts specified in pounds of pure live seed (PLS)* per acre. There shall be no primary or secondary noxious weeds in the seed mixture. Seed will be tested and the viability testing of seed will be done in accordance with State law (s) and within nine (9) months prior to purchase. Commercial seed will be either certified or registered seed. The seed container will be tagged in accordance with State law(s) and available for inspection by the authorized officer.

Seed will be planted using a drill equipped with a depth regulator to ensure proper depth of planting where drilling is possible. The seed mixture will be evenly and uniformly planted over the disturbed area (smaller/heavier seeds have a tendency to drop the bottom of the drill and are planted first). The holder shall take appropriate measures to ensure this does not occur. Where drilling is not possible, seed will be broadcast and the area shall be raked or chained to cover the seed. When broadcasting the seed, the pounds per acre are to be doubled. The seeding will be repeated until a satisfactory stand is established as determined by the authorized officer. Evaluation of growth will not be made before completion of at least one full growing season after seeding.

Species to be planted in pounds of pure live seed* per acre:

Species	lb/acre
Sand dropseed (<i>Sporobolus cryptandrus</i>)	1.0
Sand love grass (<i>Eragrostis trichodes</i>)	1.0
Plains bristlegrass (<i>Setaria macrostachya</i>)	2.0

*Pounds of pure live seed:

Pounds of seed x percent purity x percent germination = pounds pure live seed



U.S. Department of the Interior
BUREAU OF LAND MANAGEMENT

Operator Certification Data Report

12/02/2019

Operator Certification

I hereby certify that I, or someone under my direct supervision, have inspected the drill site and access route proposed herein; that I am familiar with the conditions which currently exist; that I have full knowledge of state and Federal laws applicable to this operation; that the statements made in this APD package are, to the best of my knowledge, true and correct; and that the work associated with the operations proposed herein will be performed in conformity with this APD package and the terms and conditions under which it is approved. I also certify that I, or the company I represent, am responsible for the operations conducted under this application. These statements are subject to the provisions of 18 U.S.C. 1001 for the filing of false statements.

NAME: Jenny Harms

Signed on: 06/21/2019

Title: Regulatory Compliance Professional

Street Address: 333 West Sheridan Avenue

City: Oklahoma City

State: OK

Zip: 73102

Phone: (405)552-6560

Email address: jennifer.harms@dvn.com

Field Representative

Representative Name: Ray vaz

Street Address: 333 WEST SHERIDAN AVE

City: OKLAHOMA CITY

State: OK

Zip: 73102

Phone: (575)748-1871

Email address: ray.vaz@dvn.com



APD ID: 10400043114

Submission Date: 06/27/2019

Highlighted data
reflects the most
recent changes

Operator Name: DEVON ENERGY PRODUCTION COMPANY LP

Well Name: THOROUGHbred 10-3 FED

Well Number: 711H

[Show Final Text](#)

Well Type: OIL WELL

Well Work Type: Drill

Section 1 - General

APD ID: 10400043114

Tie to previous NOS?

Submission Date: 06/27/2019

BLM Office: CARLSBAD

User: Jenny Harms

Title: Regulatory Compliance
Professional

Federal/Indian APD: FED

Is the first lease penetrated for production Federal or Indian? FED

Lease number: NMNM120904

Lease Acres: 200

Surface access agreement in place?

Allotted?

Reservation:

Agreement in place? NO

Federal or Indian agreement:

Agreement number:

Agreement name:

Keep application confidential? YES

Permitting Agent? NO

APD Operator: DEVON ENERGY PRODUCTION COMPANY LP

Operator letter of designation:

Operator Info

Operator Organization Name: DEVON ENERGY PRODUCTION COMPANY LP

Operator Address: 333 West Sheridan Avenue

Zip: 73102

Operator PO Box:

Operator City: Oklahoma City State: OK

Operator Phone: (800)583-3866

Operator Internet Address:

Section 2 - Well Information

Well in Master Development Plan? NO

Master Development Plan name:

Well in Master SUPO? NO

Master SUPO name:

Well in Master Drilling Plan? NO

Master Drilling Plan name:

Well Name: THOROUGHbred 10-3 FED

Well Number: 711H

Well API Number:

Field/Pool or Exploratory? Field and Pool

Field Name: FORTY NINER
RIDGE BONE SPRING

Pool Name: UPPER BONE
SPRING SHALE

Operator Name: DEVON ENERGY PRODUCTION COMPANY LP

Well Name: THOROUGHbred 10-3 FED

Well Number: 711H

Is the proposed well in an area containing other mineral resources? NATURAL GAS,OIL,POTASH

Is the proposed well in a Helium production area? N Use Existing Well Pad? YES New surface disturbance? N

Type of Well Pad: MULTIPLE WELL

Multiple Well Pad Name: Number: 1

THOROUGHbred 10 WELLPAD

Well Class: HORIZONTAL

Number of Legs:

Well Work Type: Drill

Well Type: OIL WELL

Describe Well Type:

Well sub-Type: INFILL

Describe sub-type:

Distance to town:

Distance to nearest well: 1846 FT

Distance to lease line: 220 FT

Reservoir well spacing assigned acres Measurement: 240 Acres

Well plat: THOROUGHbred_10_3_FED_COM_711H_WL_P_C102_SIGNED_5_3_2019_20190627202520.pdf

Well work start Date: 05/27/2020

Duration: 45 DAYS

Section 3 - Well Location Table

Survey Type: RECTANGULAR

Describe Survey Type:

Datum: NAD83

Vertical Datum: NAVD88

Survey number: 7225

Reference Datum:

Wellbore	NS-Foot	NS Indicator	EW-Foot	EW Indicator	Twsp	Range	Section	Aliquot/Lot/Tract	Latitude	Longitude	County	State	Meridian	Lease Type	Lease Number	Elevation	MD	TVD	Will this well produce from this lease?
SHL Leg #1	220	FSL	350	FWL	26S	31E	10	Aliquot SWS W	32.0507278	-103.7735247	EDD Y	NEW MEXI CO	NEW MEXI CO	F	NMNM 120904	3401	0	0	
KOP Leg #1	50	FSL	330	FWL	26S	31E	10	Aliquot SWS W	32.050261	-103.773592	EDD Y	NEW MEXI CO	NEW MEXI CO	F	NMNM 120904	-7511	10914	10912	
PPP Leg #1-1	330	FSL	330	FWL	26S	31E	10	Aliquot SWS W	32.05103	-103.773589	EDD Y	NEW MEXI CO	NEW MEXI CO	F	NMNM 120904	-8003	11507	11404	

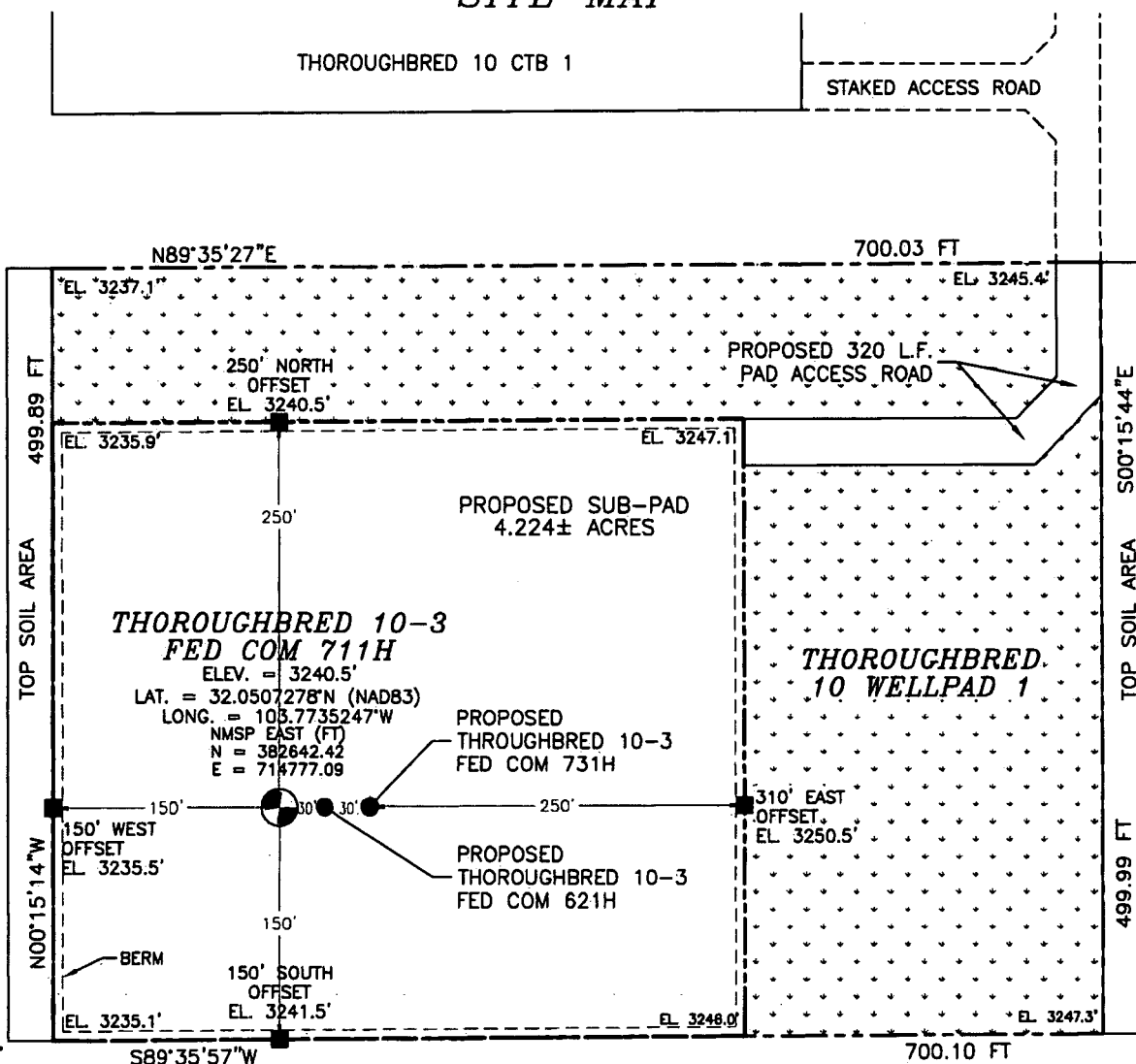
Operator Name: DEVON ENERGY PRODUCTION COMPANY LP

Well Name: THOROUGHbred 10-3 FED

Well Number: 711H

Wellbore	NS-Foot	NS Indicator	EW-Foot	EW Indicator	Twsp	Range	Section	Aliquot/Lot/Tract	Latitude	Longitude	County	State	Meridian	Lease Type	Lease Number	Elevation	MD	TVD	Will this well produce from this lease?
EXIT Leg #1	231 0	FSL	330	FWL	26S	31E	3	Aliquot NWS W	32.07112 67	- 103.7735 584	EDD Y	NEW MEXI CO	NEW MEXI CO	F	NMNM 089057	- 808 4	188 32	114 85	
BHL Leg #1	231 0	FSL	330	FWL	26S	31E	3	Aliquot NWS W	32.07112 67	- 103.7735 584	EDD Y	NEW MEXI CO	NEW MEXI CO	F	NMNM 089057	- 808 4	188 32	114 85	

SECTION 10, TOWNSHIP 26 SOUTH, RANGE 31 EAST, N.M.P.M.
EDDY COUNTY, STATE OF NEW MEXICO
SITE MAP



NOTE: LATITUDE AND LONGITUDE COORDINATES ARE SHOWN USING THE NORTH AMERICAN DATUM OF 1983 (NAD83). LISTED NEW MEXICO STATE PLANE EAST COORDINATES ARE GRID (NAD83). BASIS OF BEARING AND DISTANCES USED ARE NEW MEXICO STATE PLANE EAST COORDINATES MODIFIED TO THE SURFACE. ELEVATION VALUES ARE NAVD83.

012 60 120 240

SCALE 1" = 120'

DIRECTIONS TO LOCATION

FROM THE INTERSECTION OF CR. 1 (ORLA HWY.) & MONSANTO ROAD, GO SOUTH ON CR. 1 APPROX. 4.2 MILES TO A CALICHE ROAD (PIPELINE ROAD), TURN RIGHT (WEST) AND GO APPROX. 5.2 MILES TO A "T" INTERSECTION, TURN LEFT AND GO SOUTH APPROX. 1.0 MILE, TURN RIGHT AND GO WEST APPROX. 0.25 MILE TO THE SOUTHWEST CORNER OF AN EXISTING WELLPAD AND A ROAD SURVEY, TURN RIGHT AND FOLLOW ROAD SURVEY NORTH APPROX. 0.2 MILE, TURN LEFT AND GO WEST APPROX. 0.2 MILE, TURN LEFT AND GO SOUTH APPROX. 0.1 MILE TO THE NORTHEAST PAD CORNER FOR THIS LOCATION.

DEVON ENERGY PRODUCTION COMPANY, L.P.
THOROUGHbred 10-3 FED COM 711H
LOCATED 220 FT. FROM THE SOUTH LINE
AND 350 FT. FROM THE WEST LINE OF
SECTION 10, TOWNSHIP 26 SOUTH,
RANGE 31 EAST, N.M.P.M.
EDDY COUNTY, STATE OF NEW MEXICO

MAY 3, 2019

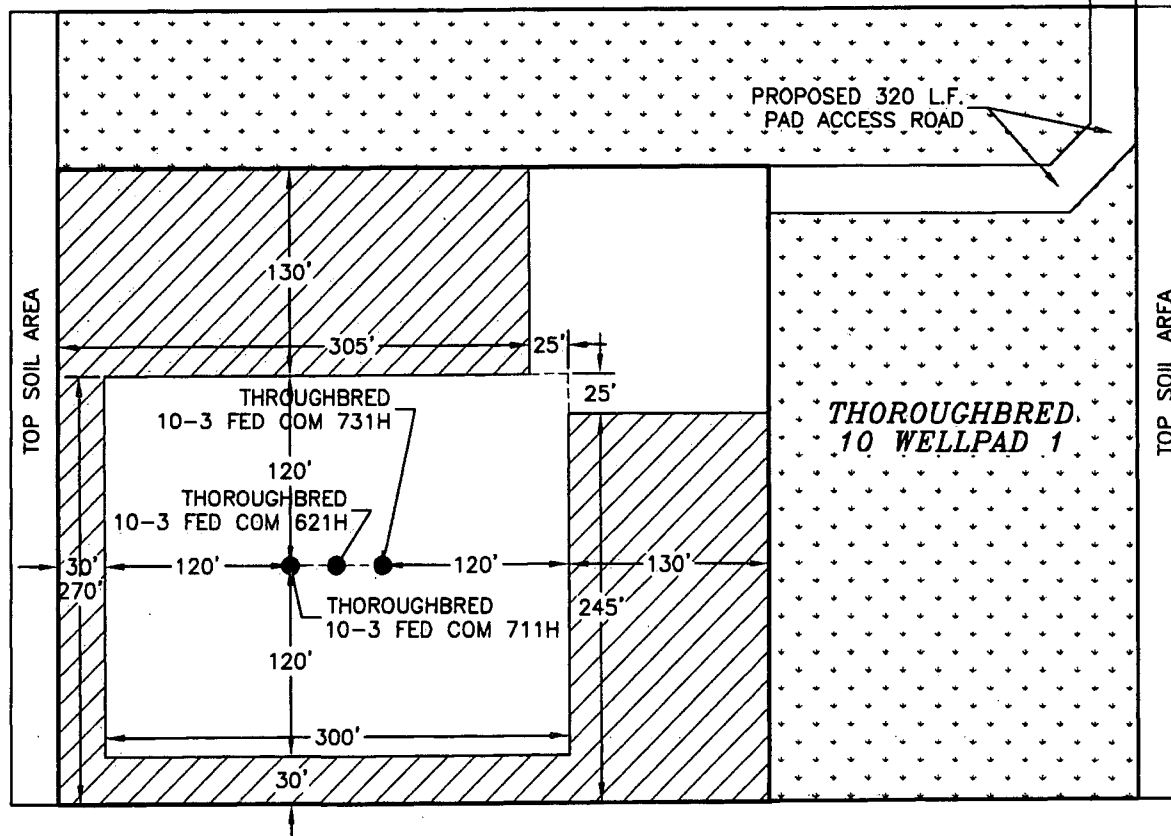
SURVEY NO. 7225

MADRON SURVEYING, INC. 301 SOUTH CANAL CARLSBAD, NEW MEXICO
(575) 234-3341

SECTION 10, TOWNSHIP 26 SOUTH, RANGE 31 EAST, N.M.P.M.
EDDY COUNTY, STATE OF NEW MEXICO
INTERIM SITE BUILD PLAN

THOROUGHbred 10 CTB 1

STAKED ACCESS ROAD



DENOTES INTERIM PAD RECLAMATION AREA

DENOTES GRADING SITE RECLAMATION AREA

012 60 120 240
SCALE 1" = 120'

2.032± ACRES INTERIM PAD RECLAMATION AREA
3.590± ACRES GRADING SITE RECLAMATION AREA
2.413± ACRES NON-RECLAIMED AREA
8.035± ACRES THOROUGHbred 10 WELLPAD 1

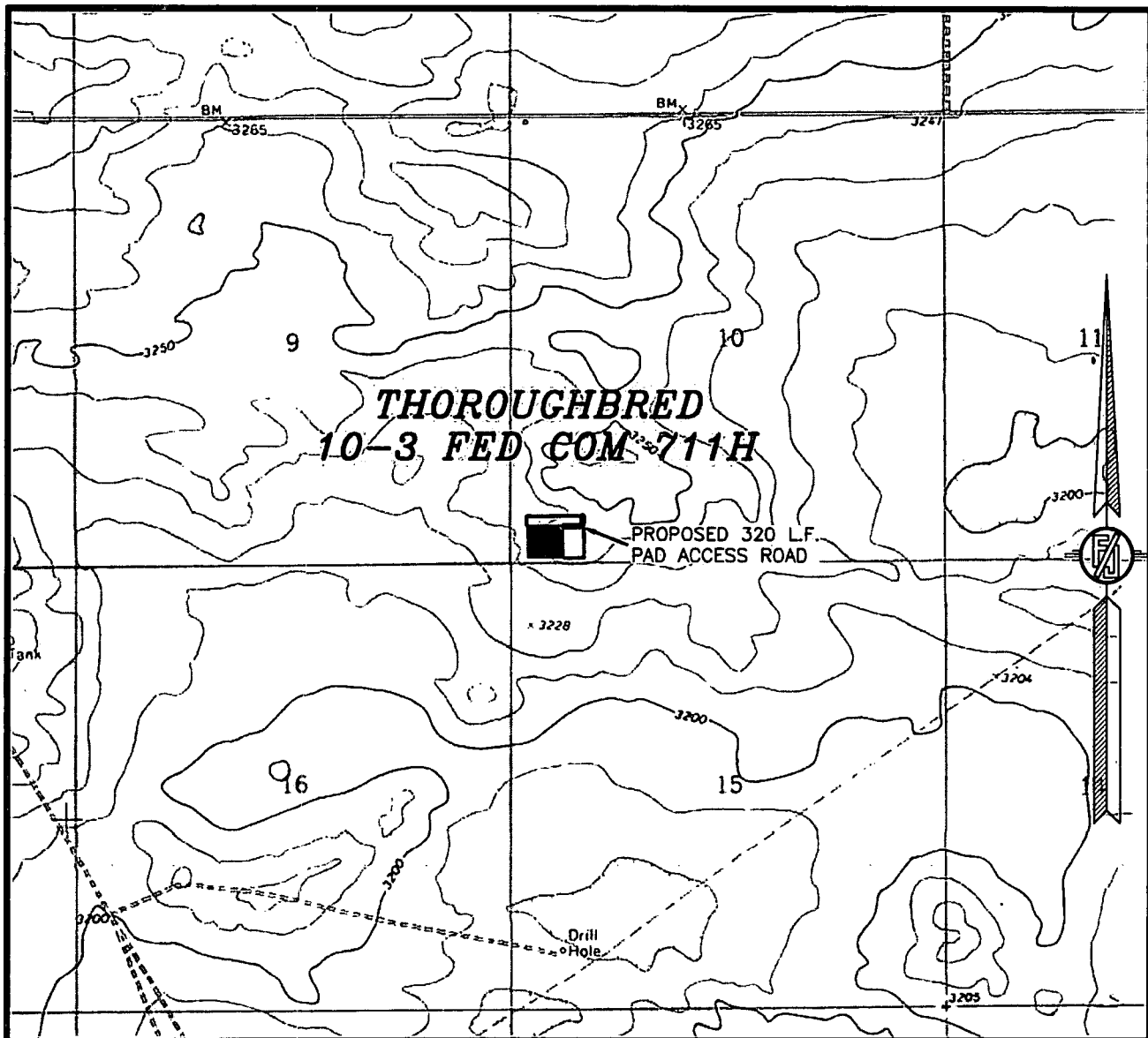
DEVON ENERGY PRODUCTION COMPANY, L.P.
THOROUGHbred 10-3 FED COM 711H
LOCATED 220 FT. FROM THE SOUTH LINE
AND 350 FT. FROM THE WEST LINE OF
SECTION 10, TOWNSHIP 26 SOUTH,
RANGE 31 EAST, N.M.P.M.
EDDY COUNTY, STATE OF NEW MEXICO

MAY 3, 2019

SURVEY NO. 7225

MADRON SURVEYING, INC. 301 SOUTH CANAL CARLSBAD, NEW MEXICO
(575) 234-3341

SECTION 10, TOWNSHIP 26 SOUTH, RANGE 31 EAST, N.M.P.M.
EDDY COUNTY, STATE OF NEW MEXICO
LOCATION VERIFICATION MAP



USGS QUAD MAP:
PHANTOM BANKS

NOT TO SCALE

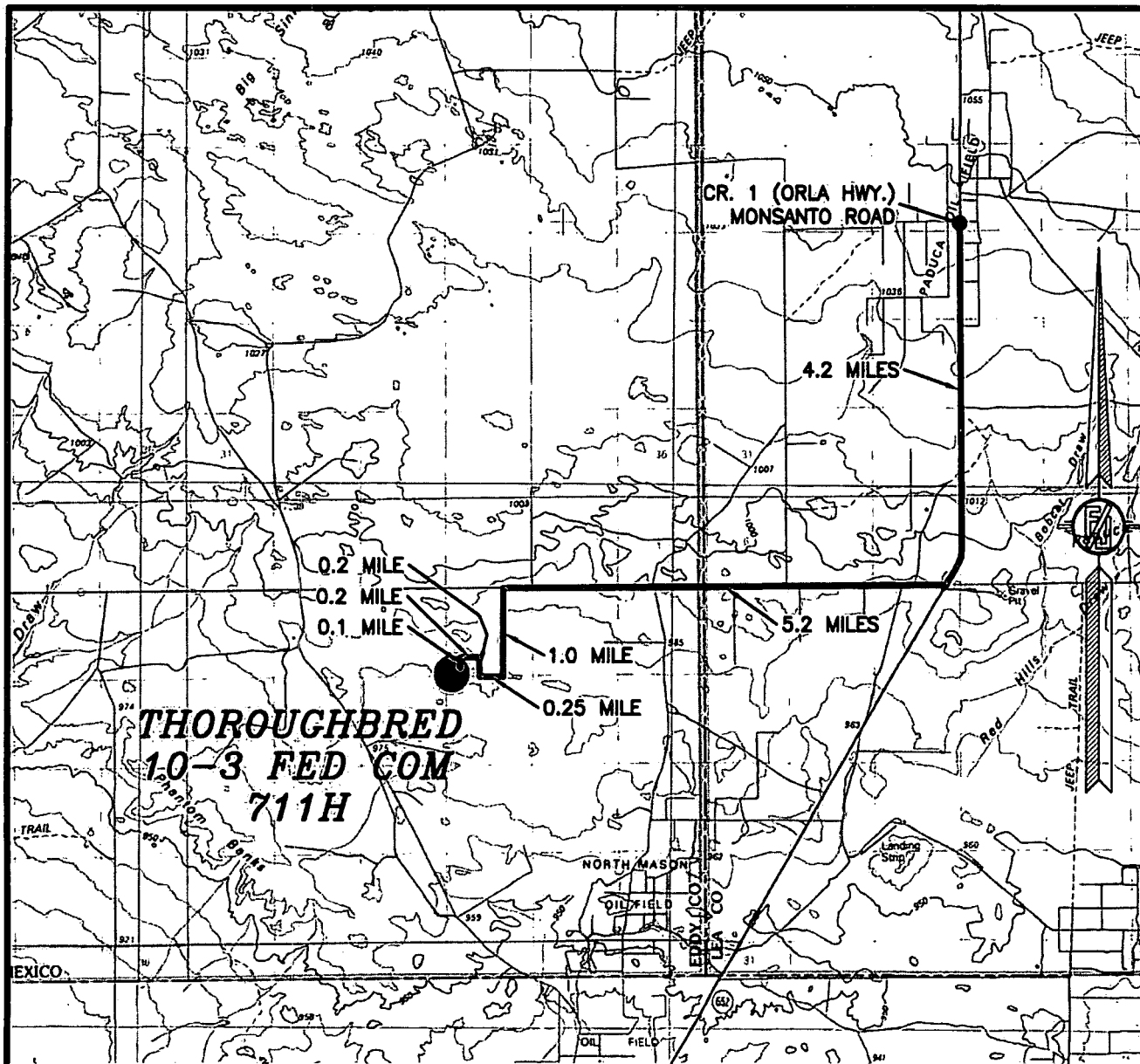
DEVON ENERGY PRODUCTION COMPANY, L.P.
THOROUGHbred 10-3 FED COM 711H
LOCATED 220 FT. FROM THE SOUTH LINE
AND 350 FT. FROM THE WEST LINE OF
SECTION 10, TOWNSHIP 26 SOUTH,
RANGE 31 EAST, N.M.P.M.
EDDY COUNTY, STATE OF NEW MEXICO

MAY 3, 2019

SURVEY NO. 7225

MADRON SURVEYING, INC. 301 SOUTH CANAL (575) 234-3341 CARLSBAD, NEW MEXICO

SECTION 10, TOWNSHIP 26 SOUTH, RANGE 31 EAST, N.M.P.M.
EDDY COUNTY, STATE OF NEW MEXICO
VICINITY MAP



DISTANCES IN MILES

NOT TO SCALE

DIRECTIONS TO LOCATION

FROM THE INTERSECTION OF CR. 1 (ORLA HWY.) & MONSANTO ROAD, GO SOUTH ON CR. 1 APPROX. 4.2 MILES TO A CALICHE ROAD (PIPELINE ROAD), TURN RIGHT (WEST) AND GO APPROX. 5.2 MILES TO A "T" INTERSECTION, TURN LEFT AND GO SOUTH APPROX. 1.0 MILE, TURN RIGHT AND GO WEST APPROX. 0.25 MILE TO THE SOUTHWEST CORNER OF AN EXISTING WELLPAD AND A ROAD SURVEY, TURN RIGHT AND FOLLOW ROAD SURVEY NORTH APPROX. 0.2 MILE, TURN LEFT AND GO WEST APPROX. 0.2 MILE, TURN LEFT AND GO SOUTH APPROX 0.1 MILE TO THE NORTHEAST PAD CORNER FOR THIS LOCATION.

DEVON ENERGY PRODUCTION COMPANY, L.P.

THOROUGHbred 10-3 FED COM 711H

LOCATED 220 FT. FROM THE SOUTH LINE
AND 350 FT. FROM THE WEST LINE OF
SECTION 10, TOWNSHIP 26 SOUTH,
RANGE 31 EAST, N.M.P.M.
EDDY COUNTY, STATE OF NEW MEXICO

MAY 3, 2019

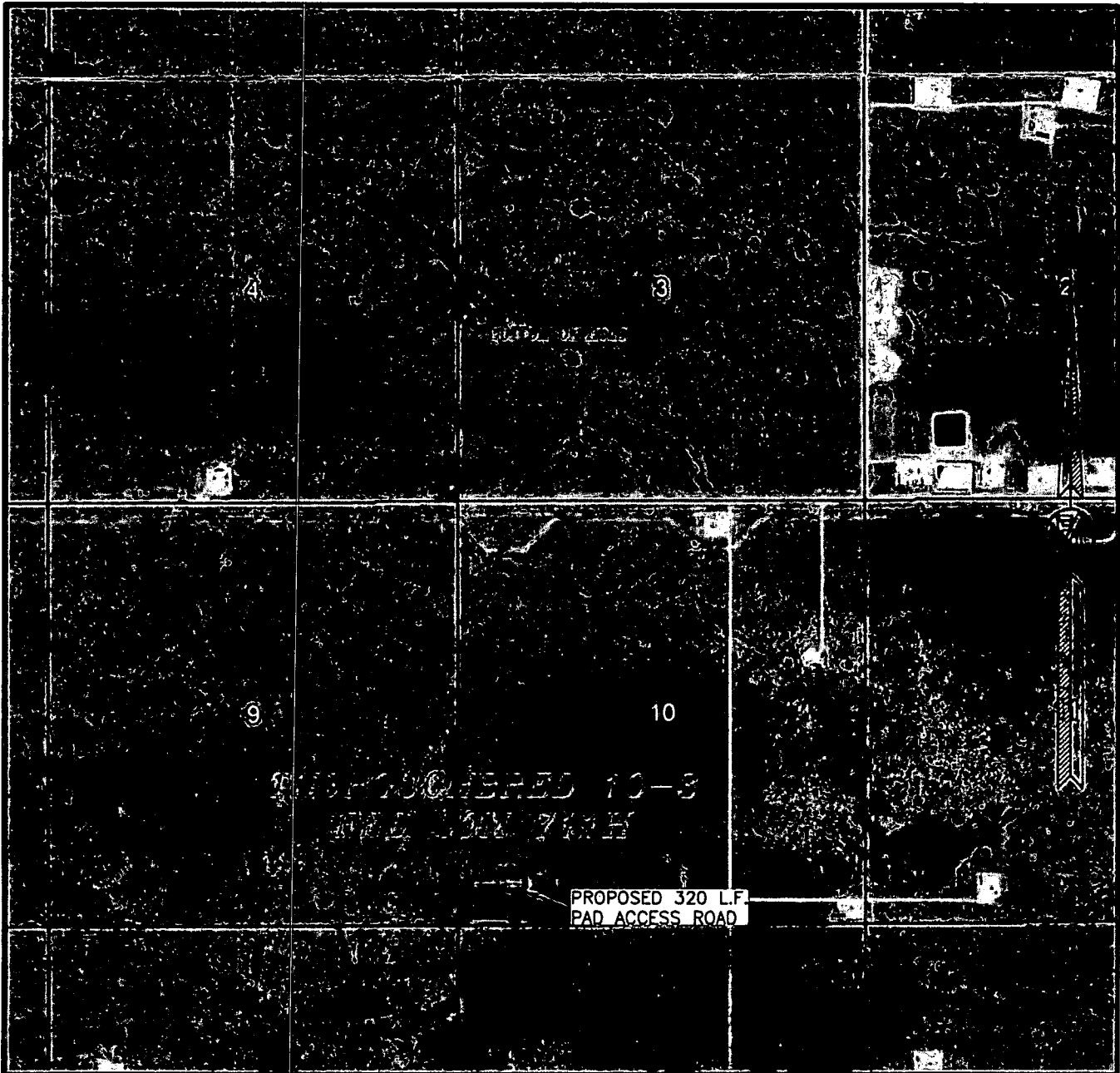
SURVEY NO. 7225

MADRON SURVEYING, INC.

301 SOUTH CANAL
(575) 234-3341

CARLSBAD, NEW MEXICO

SECTION 10, TOWNSHIP 26 SOUTH, RANGE 31 EAST, N.M.P.M.
EDDY COUNTY, STATE OF NEW MEXICO
AERIAL PHOTO



NOT TO SCALE
AERIAL PHOTO:
GOOGLE EARTH
FEB. 2019

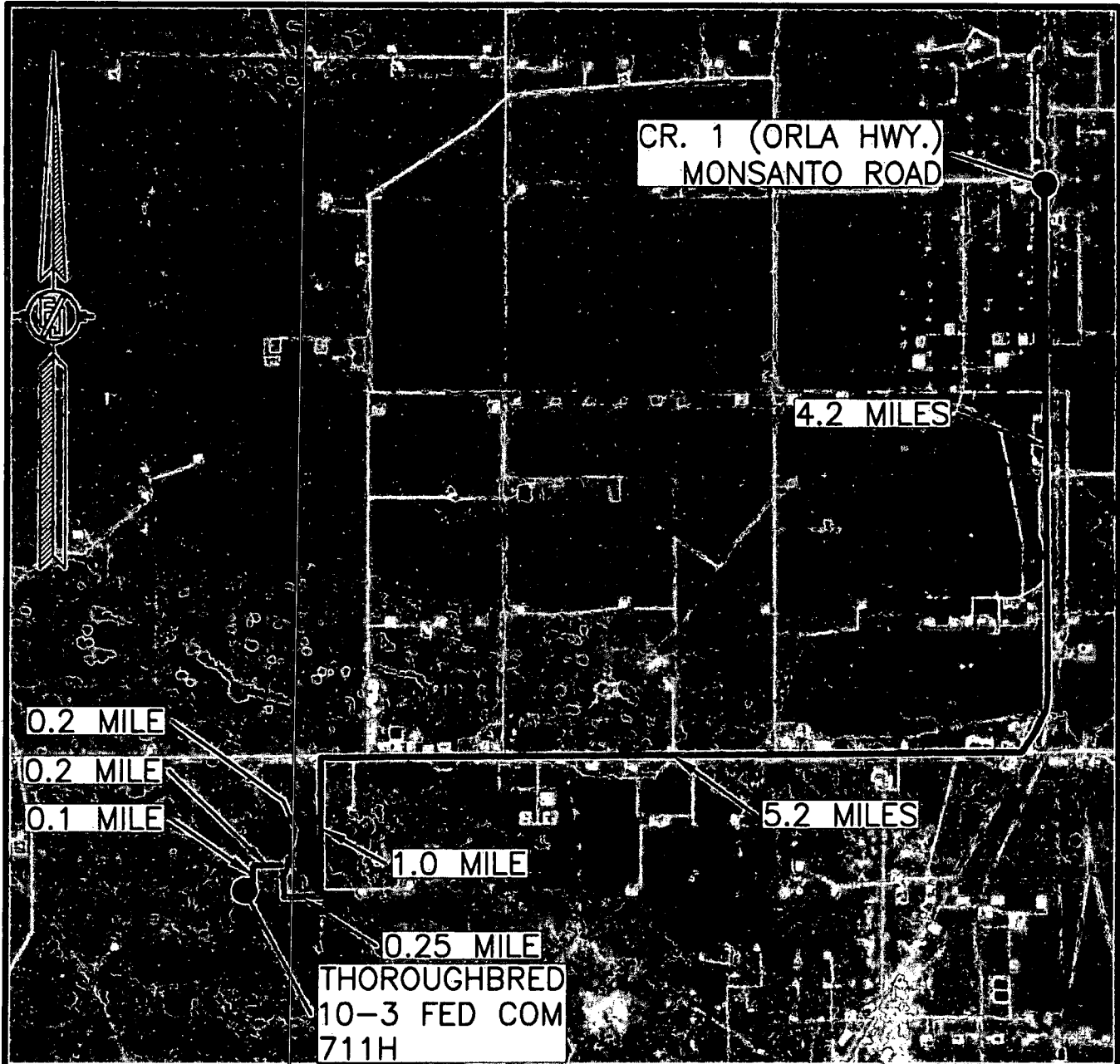
DEVON ENERGY PRODUCTION COMPANY, L.P.
THOROUGHbred 10-3 FED COM 711H
LOCATED 220 FT. FROM THE SOUTH LINE
AND 350 FT. FROM THE WEST LINE OF
SECTION 10, TOWNSHIP 26 SOUTH,
RANGE 31 EAST, N.M.P.M.
EDDY COUNTY, STATE OF NEW MEXICO

MAY 3, 2019

SURVEY NO. 7225

MADRON SURVEYING, INC. 301 SOUTH CANAL CARLSBAD, NEW MEXICO
(575) 234-3341

SECTION 10, TOWNSHIP 26 SOUTH, RANGE 31 EAST, N.M.P.M.
EDDY COUNTY, STATE OF NEW MEXICO
AERIAL ACCESS ROUTE MAP



NOT TO SCALE
AERIAL PHOTO:
GOOGLE EARTH
FEB. 2019

DEVON ENERGY PRODUCTION COMPANY, L.P.
THOROUGHbred 10-3 FED COM 711H
LOCATED 220 FT. FROM THE SOUTH LINE
AND 350 FT. FROM THE WEST LINE OF
SECTION 10, TOWNSHIP 26 SOUTH,
RANGE 31 EAST, N.M.P.M.
EDDY COUNTY, STATE OF NEW MEXICO

MAY 3, 2019

SURVEY NO. 7225

MADRON SURVEYING, INC. 301 SOUTH CANAL (575) 234-3341 CARLSBAD, NEW MEXICO

PLAN VIEW

THOROUGHbred
10 CTB 1

STAKED ACCESS ROAD

PROPOSED 114 L.F.
ACCESS ROAD

PROPOSED 320 L.F.
PAD ACCESS ROAD

PAD
CENTER
POINT

THOROUGHbred
10 WELLPAD 1
PROPOSED PAD
EL. = 3242.0'

THOROUGHbred
10-3 FED COM-734H

THOROUGHbred
10-3 FED COM-621H

THOROUGHbred
10-3 FED COM-711H

BERM

BERM

LIMITS OF
EARTHWORK
3:1 SLOPE (TYP.)

LIMITS OF
EARTHWORK
3:1 SLOPE (TYP.)



012 60 120 240
SCALE 1" = 120'

DEVON ENERGY PRODUCTION COMPANY, L.P.
PAD GRADING AND CROSS SECTIONS
FOR THOROUGHbred 10-3 FED COM 711H
SECTION 10, TOWNSHIP 26 SOUTH,
RANGE 31 EAST, N.M.P.M.
EDDY COUNTY, STATE OF NEW MEXICO

CUT	FILL	NET
22526 CU. YD	19297 CU. YD	3229 CU. YD (CUT)

EARTHWORK QUANTITIES ARE ESTIMATED

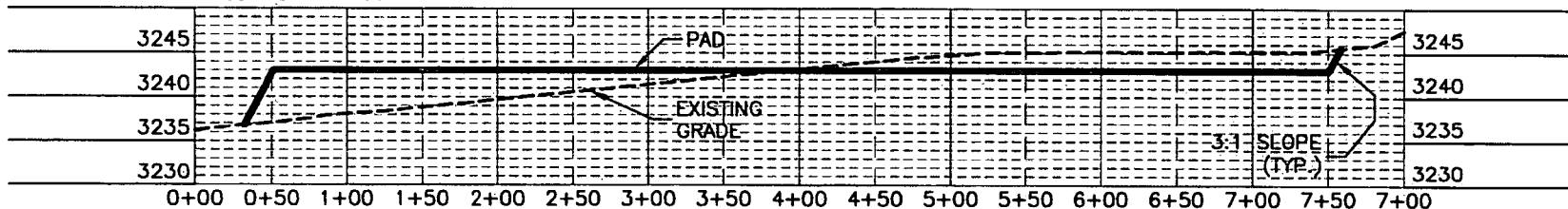
MAY 3, 2019

MADRON SURVEYING, INC. 301 SOUTH CANAL CARLSBAD, NEW MEXICO
(575) 234-3341

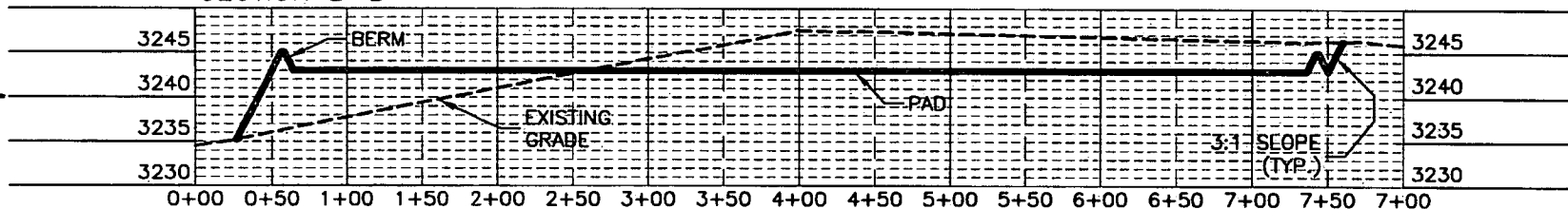
SHEET 1-2
SURVEY NO. 7225

CROSS-SECTIONS

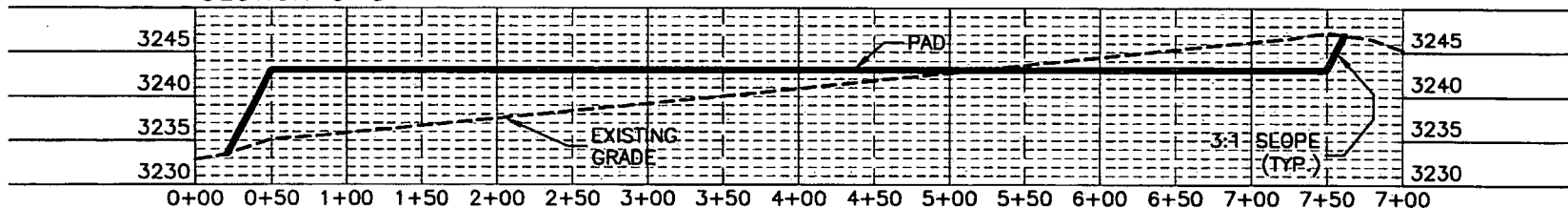
SECTION A-A'



SECTION B-B'



SECTION C-C'



012 60 120 240
SCALE 1" = 120' - 1" = 20' VER

DEVON ENERGY PRODUCTION COMPANY, L.P.
PAD GRADING AND CROSS SECTIONS
FOR THOROUGHRED 10-3 FED COM 711H
SECTION 10, TOWNSHIP 26 SOUTH,
RANGE 31 EAST, N.M.P.M.
EDDY COUNTY, STATE OF NEW MEXICO

CUT	FILL	NET
22526 CU. YD	19297 CU. YD	3229 CU. YD (CUT)

EARTHWORK QUANTITIES ARE ESTIMATED

MAY 3, 2019

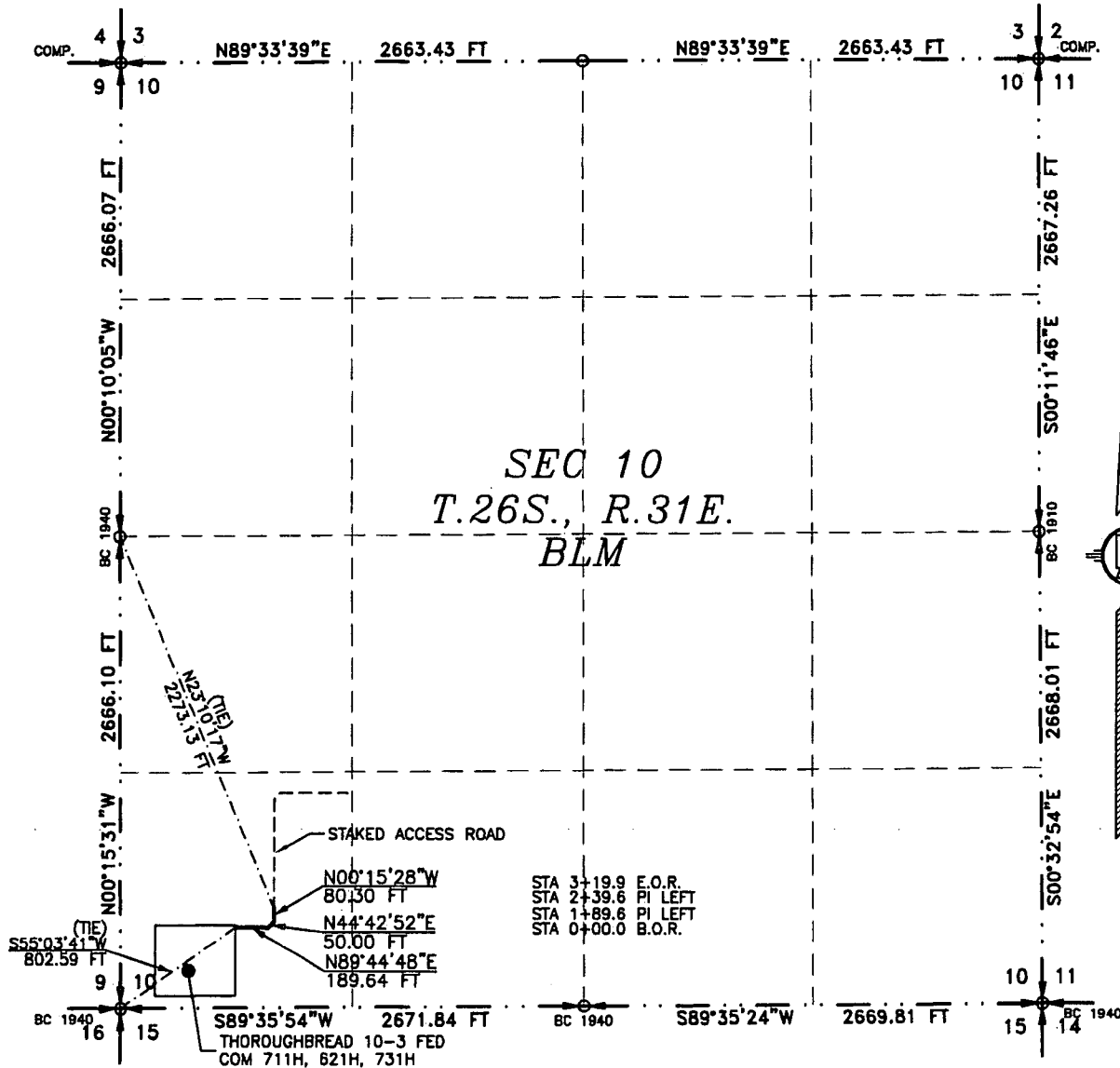
MADRON SURVEYING, INC. 301 SOUTH CANAL (575) 234-3341 CARLSBAD, NEW MEXICO

SHEET 2-2
SURVEY NO. 7225

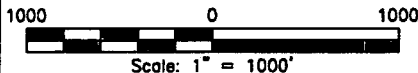
ACCESS ROAD PLAT

PAD ACCESS ROAD FOR THOROUGHBREAR 10-3 FED COM 711H, 621H, 731H

DEVON ENERGY PRODUCTION COMPANY, L.P.
CENTERLINE SURVEY OF AN ACCESS ROAD CROSSING
SECTION 10, TOWNSHIP 26 SOUTH, RANGE 31 EAST, N.M.P.M.
EDDY COUNTY, STATE OF NEW MEXICO
MAY 3, 2019



SEE NEXT SHEET (2-2) FOR DESCRIPTION



GENERAL NOTES

- 1.) THE INTENT OF THIS ROUTE SURVEY IS TO ACQUIRE AN EASEMENT.
- 2.) BASIS OF BEARING AND DISTANCE IS NMSP EAST (NAD83) MODIFIED TO SURFACE COORDINATES. NAD 83 (FEET) AND NAVD 88 (FEET) COORDINATE SYSTEMS USED IN THE SURVEY.

SHEET: 1-2

MADRON SURVEYING, INC.

SURVEYOR CERTIFICATE

I, FILIMON F. JARAMILLO, A NEW MEXICO PROFESSIONAL SURVEYOR NO. 12797, HEREBY CERTIFY THAT I HAVE CONDUCTED AND AM RESPONSIBLE FOR THIS SURVEY, THAT THIS SURVEY IS TRUE AND CORRECT TO THE BEST OF MY KNOWLEDGE AND BELIEF, AND THAT THIS SURVEY AND PLAT MEET THE MINIMUM STANDARDS FOR LAND SURVEYING IN THE STATE OF NEW MEXICO.

IN WITNESS WHEREOF, THIS CERTIFICATE IS EXECUTED AT CARLSBAD, NEW MEXICO, THIS 3 DAY OF MAY 2019

FILIMON F. JARAMILLO, P.E.S. 12797
381 SOUTH CANAL
(575) 234-3341

MADRON SURVEYING, INC.
301 SOUTH CANAL
CARLSBAD, NEW MEXICO 88220
Phone (575) 234-3341

SURVEY NO. 7225

CARLSBAD, NEW MEXICO

ACCESS ROAD PLAT

PAD ACCESS ROAD FOR THOROUGHBREAR 10-3 FED COM 711H, 621H, 731H

DEVON ENERGY PRODUCTION COMPANY, L.P.
CENTERLINE SURVEY OF AN ACCESS ROAD CROSSING
SECTION 10, TOWNSHIP 26 SOUTH, RANGE 31 EAST, N.M.P.M.
EDDY COUNTY, STATE OF NEW MEXICO
MAY 3, 2019

DESCRIPTION

A STRIP OF LAND 30 FEET WIDE CROSSING BUREAU OF LAND MANAGEMENT LAND IN SECTION 10, TOWNSHIP 26 SOUTH, RANGE 31 EAST, N.M.P.M., EDDY COUNTY, STATE OF NEW MEXICO AND BEING 15 FEET EACH SIDE OF THE FOLLOWING DESCRIBED CENTERLINE SURVEY:

BEGINNING AT A POINT WITHIN THE SW/4 SW/4 OF SAID SECTION 10, TOWNSHIP 26 SOUTH, RANGE 31 EAST, N.M.P.M., WHENCE THE SOUTHWEST CORNER OF SAID SECTION 10, TOWNSHIP 26 SOUTH, RANGE 31 EAST, N.M.P.M. BEARS S55°03'41"W, A DISTANCE OF 802.59 FEET;
THENCE N89°44'48"E A DISTANCE OF 189.64 FEET TO AN ANGLE POINT OF THE LINE HEREIN DESCRIBED;
THENCE N44°42'52"E A DISTANCE OF 50.00 FEET TO AN ANGLE POINT OF THE LINE HEREIN DESCRIBED;
THENCE N00°15'28"W A DISTANCE OF 80.30 FEET THE TERMINUS OF THIS CENTERLINE SURVEY, WHENCE THE WEST QUARTER CORNER OF SAID SECTION 10, TOWNSHIP 26 SOUTH, RANGE 31 EAST, N.M.P.M. BEARS N23°10'17"W, A DISTANCE OF 2273.13 FEET;

SAID STRIP OF LAND BEING 319.94 FEET OR 19.39 RODS IN LENGTH, CONTAINING 0.220 ACRES MORE OR LESS AND BEING ALLOCATED BY FORTIES AS FOLLOWS:

SW/4 SW/4 319.94 L.F. 19.39 RODS 0.220 ACRES

SURVEYOR CERTIFICATE

I, FILIMON F. JARAMILLO, A NEW MEXICO PROFESSIONAL SURVEYOR NO. 12797, HEREBY CERTIFY THAT I HAVE CONDUCTED AND AM RESPONSIBLE FOR THIS SURVEY, THAT THIS SURVEY IS TRUE AND CORRECT TO THE BEST OF MY KNOWLEDGE AND BELIEF, AND THAT THIS SURVEY AND PLAT MEET THE MINIMUM STANDARDS FOR LAND SURVEYING IN THE STATE OF NEW MEXICO.

IN WITNESS WHEREOF, THIS CERTIFICATE IS EXECUTED AT CARLSBAD, NEW MEXICO, THIS 7 DAY OF MAY 2019

MADRON SURVEYING, INC.
301 SOUTH CANAL
CARLSBAD, NEW MEXICO 88220
Phone (575) 234-3341

GENERAL NOTES

1.) THE INTENT OF THIS ROUTE SURVEY IS TO ACQUIRE AN EASEMENT.

2.) BASIS OF BEARING AND DISTANCE IS NMSP EAST (NAD83) MODIFIED TO SURFACE COORDINATES. NAD 83 (FEET) AND NAVD 88 (FEET) COORDINATE SYSTEMS USED IN THE SURVEY.

SHEET: 2-2

MADRON SURVEYING, INC. CARLSBAD, NEW MEXICO

SURVEY NO. 7225



APD ID: 10400043114

Submission Date: 06/27/2019

Highlighted data
reflects the most
recent changes

Operator Name: DEVON ENERGY PRODUCTION COMPANY LP

Well Name: THOROUGHbred 10-3 FED

Well Number: 711H

[Show Final Text](#)

Well Type: OIL WELL

Well Work Type: Drill

Section 1 - Geologic Formations

Formation ID	Formation Name	Elevation	True Vertical Depth	Measured Depth	Lithologies	Mineral Resources	Producing Formation
1	UNKNOWN	3241	0	0	OTHER, ALLUVIUM : Surface	NONE	N
2	RUSTLER	1905	1338	1338	SANDSTONE	NONE	N
3	TOP SALT	1592	1651	1651	SALT	NONE	N
4	BASE OF SALT	-599	3842	3842	SALT	NONE	N
5	LAMAR	-841	4082	4082	SANDSTONE	NATURAL GAS, OIL	N
6	BELL CANYON	-861	4102	4102	SANDSTONE	NATURAL GAS, OIL	N
7	CHERRY CANYON	-1811	5052	5052	SANDSTONE	NATURAL GAS, OIL	N
8	BRUSHY CANYON	-3101	6342	6342	SANDSTONE	NATURAL GAS, OIL	N
9	BONE SPRING LIME	-4759	8000	8000	LIMESTONE	NATURAL GAS, OIL	N
10	BONE SPRING	-5781	9022	9022	SANDSTONE	NATURAL GAS, OIL	N
11	BONE SPRING 2ND	-6421	9662	9662	SANDSTONE	NATURAL GAS, OIL	N
12	BONE SPRING LIME	-6971	10212	10212	LIMESTONE	NATURAL GAS, OIL	N
13	BONE SPRING 3RD	-7681	10922	10922	SANDSTONE	NATURAL GAS	N
14	WOLFCAMP	-8084	11327	11327	SANDSTONE	NATURAL GAS, OIL	Y
15	STRAWN	-10581	13822	13822	LIMESTONE	NATURAL GAS, OIL	N

Section 2 - Blowout Prevention

Operator Name: DEVON ENERGY PRODUCTION COMPANY LP

Well Name: THOROUGHbred 10-3 FED

Well Number: 711H

Pressure Rating (PSI): 5M

Rating Depth: 11485

Equipment: BOP/BOPE will be installed per Onshore Oil & Gas Order #2 requirements prior to drilling below surface casing, a BOP/BOPE system with the above minimum rating will be installed on the wellhead system. BOP/BOPE will be tested by an independent service company per Onshore Oil & Gas Order #2 requirements and MASP (Maximum Anticipated Surface Pressure) calculations. If the system is upgraded, all the components installed will be functional and tested.

Requesting Variance? YES

Variance request: A variance is requested for the use of a flexible choke line from the BOP stack to the choke manifold. See attached for specs for hydrostatic test chart.

Testing Procedure: A multibowl wellhead may be used. The BOP will be tested per Onshore Order #2 after installation on the surface casing which will cover testing requirements for a maximum of 30 days. If any seal subject to test pressure is broken the system must be tested.

Choke Diagram Attachment:

5M_BOPE__CK_20190406162412.pdf

BOP Diagram Attachment:

5M_BOPE__CK_20190408073802.pdf

Pressure Rating (PSI): 5M

Rating Depth: 10929

Equipment: BOP/BOPE will be installed per Onshore Oil & Gas Order #2 requirements prior to drilling below intermediate casing, a BOP/BOPE system with the above minimum rating will be installed on the wellhead system. BOP/BOPE will be tested by an independent service company per Onshore Oil & Gas Order #2 requirements and MASP (Maximum Anticipated Surface Pressure) calculations. If the system is upgraded, all the components installed will be functional and tested.

Requesting Variance? YES

Variance request: A variance is requested for the use of a flexible choke line from the BOP stack to the choke manifold. See attached for specs for hydrostatic test chart.

Testing Procedure: A multibowl wellhead may be used. The BOP will be tested per Onshore Order #2 after installation on the surface casing which will cover testing requirements for a maximum of 30 days. If any seal subject to test pressure is broken the system must be tested.

Choke Diagram Attachment:

5M_BOPE__CK_20190627150314.pdf

BOP Diagram Attachment:

5M_BOPE__CK_20190627150323.pdf

Operator Name: DEVON ENERGY PRODUCTION COMPANY LP

Well Name: THOROUGHbred 10-3 FED

Well Number: 711H

Section 3 - Casing

Casing ID	String Type	Hole Size	Csg Size	Condition	Standard	Tapered String	Top Set MD	Bottom Set MD	Top Set TVD	Bottom Set TVD	Top Set MSL	Bottom Set MSL	Calculated casing length MD	Grade	Weight	Joint Type	Collapse SF	Burst SF	Joint SF Type	Joint SF	Body SF Type	Body SF
1	SURFACE	17.5	13.375	NEW	API	N	0	1443	0	1443	-6965	-8031	1443	H-40	48	ST&C	1.125	1	BUOY	1.6	BUOY	1.6
2	INTERMEDIATE	9.875	7.625	NEW	API	N	0	10929	0	10929	-6965	-12965	10929	P-110	29.7	OTHER - Flushmax III	1.125	1	BUOY	1.6	BUOY	1.6
3	PRODUCTION	6.75	5.5	NEW	API	N	0	18832	0	11485	-6965	-17514	18832	P-110	20	OTHER - Vam SG	1.125	1	BUOY	1.6	BUOY	1.6

Casing Attachments

Casing ID: 1 String Type: SURFACE

Inspection Document:

Spec Document:

Tapered String Spec:

Casing Design Assumptions and Worksheet(s):

Surf_Csg_Ass_20190406163130.pdf

Operator Name: DEVON ENERGY PRODUCTION COMPANY LP

Well Name: THOROUGHbred 10-3 FED

Well Number: 711H

Casing Attachments

Casing ID: 2 **String Type:** INTERMEDIATE

Inspection Document:

Spec Document:

Tapered String Spec:

Casing Design Assumptions and Worksheet(s):

Int_Csg_Ass_20190406163257.pdf

Casing ID: 3 **String Type:** PRODUCTION

Inspection Document:

Spec Document:

Tapered String Spec:

Casing Design Assumptions and Worksheet(s):

Prod_Csg_Ass_20190406163405.pdf

Section 4 - Cement

String Type	Lead/Tail	Stage Tool Depth	Top MD	Bottom MD	Quantity(sx)	Yield	Density	Cu Ft	Excess%	Cement type	Additives
SURFACE	Lead		0	1443	1082.7	1.44	13.2	1559.1	50	C	Class C + adds

INTERMEDIATE	Lead		0	6929	717.5	3.27	9	2346.3	30	C	Class C + Adds
INTERMEDIATE	Tail		6929	10929	783	1.44	13.2	1127.6	30	C	Class C + Adds
PRODUCTION	Lead		8914	10914	62.5	3.27	9	204.3	10	TUNED	Class C + adds

Operator Name: DEVON ENERGY PRODUCTION COMPANY LP

Well Name: THOROUGHbred 10-3 FED

Well Number: 711H

String Type	Lead/Tail	Stage Tool Depth	Top MD	Bottom MD	Quantity(sx)	Yield	Density	Cu Ft	Excess%	Cement type	Additives
PRODUCTION	Tail		1091 4	1883 2	505.1	1.44	13.2	727.4	10	H	(50:50) Clas H Cement: Poz (Fly Ash) + 0.5% bwoc HALAD-344 + 0.4% bwoc CFR-3 + 0.2% BWOC HR-601 + 2% bwoc Bentonite

Section 5 - Circulating Medium

Mud System Type: Closed

Will an air or gas system be Used? NO

Description of the equipment for the circulating system in accordance with Onshore Order #2:

Diagram of the equipment for the circulating system in accordance with Onshore Order #2:

Describe what will be on location to control well or mitigate other conditions: Sufficient mud materials to maintain mud properties and meet minimum lost circulation and weight increase requirements will be kept on location at all times.

Describe the mud monitoring system utilized: PVT/Pason/Visual Monitoring

Circulating Medium Table

Top Depth	Bottom Depth	Mud Type	Min Weight (lbs/gal)	Max Weight (lbs/gal)	Density (lbs/cu ft)	Gel Strength (lbs/100 sqft)	PH	Viscosity (CP)	Salinity (ppm)	Filtration (cc)	Additional Characteristics
1092 9	1148 5	OIL-BASED MUD	10	10.5				2			
1443	1092 9	OTHER : DBE / Cut Brine	10	10.5				2			
0	1143	OTHER : FW Gel	8.5	9							

Operator Name: DEVON ENERGY PRODUCTION COMPANY LP

Well Name: THOROUGHbred 10-3 FED

Well Number: 711H

Section 6 - Test, Logging, Coring

List of production tests including testing procedures, equipment and safety measures:

Will run GRMWD from TD to from KOP. Cement bond logs will be run in vertical to determine top of cement. Stated logs run will be in the completion report and submitted to the BLM.

List of open and cased hole logs run in the well:

CALIPER,CBL,DS,GR,MUDLOG

Coring operation description for the well:

N/A

Section 7 - Pressure

Anticipated Bottom Hole Pressure: 6271

Anticipated Surface Pressure: 6271

Anticipated Bottom Hole Temperature(F): 161

Anticipated abnormal pressures, temperatures, or potential geologic hazards? NO

Describe:

Contingency Plans geohazards description:

Contingency Plans geohazards attachment:

Hydrogen Sulfide drilling operations plan required? YES

Hydrogen sulfide drilling operations plan:

Thoroughbred_10_3_Fed_Com_711H_H2S_20190627150913.pdf

Section 8 - Other Information

Proposed horizontal/directional/multi-lateral plan submission:

Devon_Thoroughbred_10_3_Fed_Com_711H_AC_Report_Permit_Plan_1_20190627150946.pdf

Devon_Thoroughbred_10_3_Fed_Com_711H_Permit_Plan_1_20190627150946.pdf

Devon_Thoroughbred_10_3_Fed_Com_711H_Plot_Permit_Plan_1_20190627150947.pdf

Thoroughbred_10_3_Fed_Com_711H_Permit_Plan_1_20190627150947.pdf

Other proposed operations facets description:

Multi-Bowl Verbiage 5M

Multi-Bowl Wellhead 5M

Closed-Loop Design Plan

Gas Capture Plan

Spudder Rig

Other proposed operations facets attachment:

Spudder_Rig_Info_20190314132650.pdf

Clsd_Loop_20190314132649.pdf

MB_Wellhd_10M_13.375_7.625_5.5_20190510092941.pdf

5.5_20_P110_EC_VAMSG_20190510092825.pdf

7.625_29.70_P110_Flushmax_20190510092838.pdf

Operator Name: DEVON ENERGY PRODUCTION COMPANY LP

Well Name: THOROUGHBRED 10-3 FED

Well Number: 711H

MB_Wellhd_5M_13.375_8.625_20190627151021.pdf

MB_Wellhd_10M_13.375_7.625_5.5_20190627151022.pdf

GasCapturePlan_THOROUGHBRED_10_CTB_1_20190627151043.pdf

MB_Verb_5M_20190905090548.pdf

Other Variance attachment:

Co_flex_20190314132801.pdf



**Devon Energy Center
333 West Sheridan Avenue
Oklahoma City, Oklahoma 73102-5015**

Hydrogen Sulfide (H₂S) Contingency Plan

For

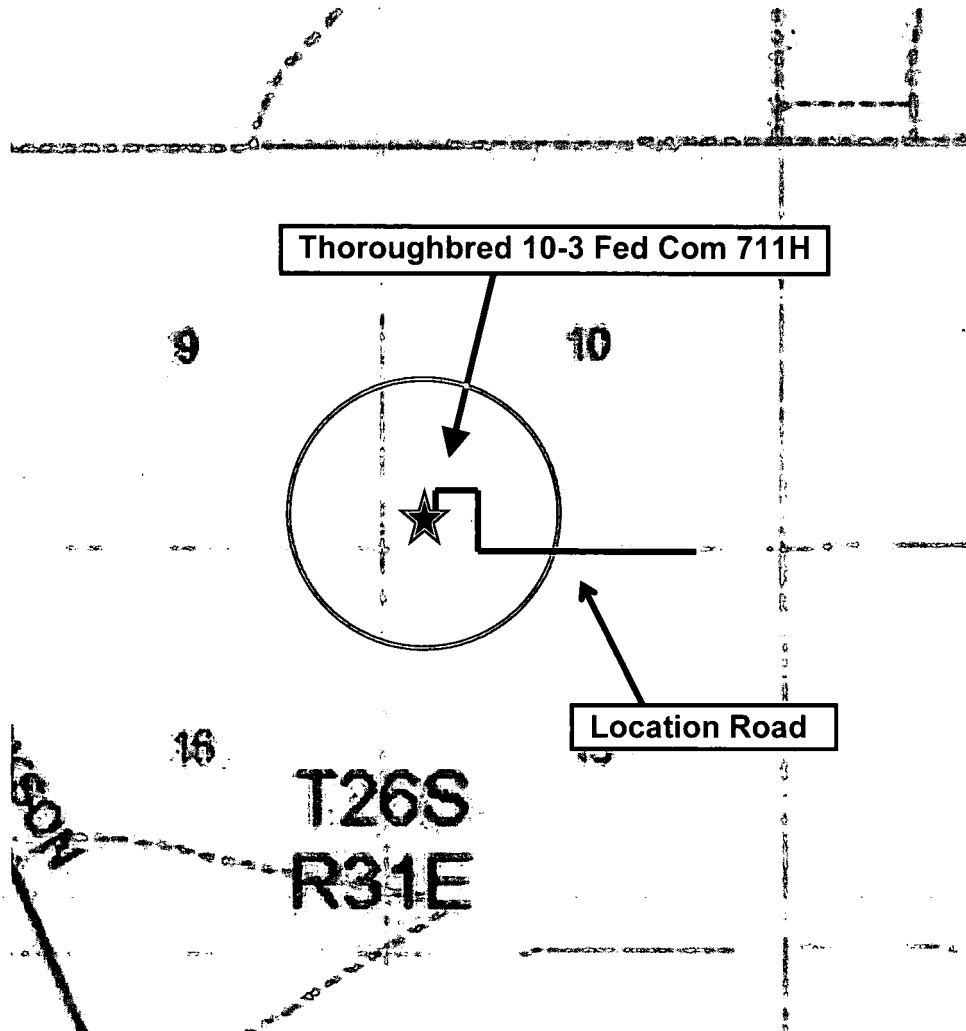
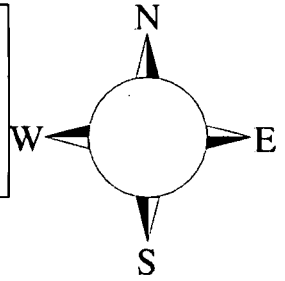
Thoroughbred 10-3 Fed Com 711H

**Sec-10 T-26S R-31E
220' FSL & 350' FWL
LAT. = 32.0507278' N (NAD83)
LONG = 103.7735247' W**

Eddy County NM

Thoroughbred 10-3 Fed Com 711H

This is an open drilling site. H₂S monitoring equipment and emergency response equipment will be used within 500' of zones known to contain H₂S, including warning signs, wind indicators and H₂S monitor.



Assumed 100 ppm ROE = 3000' (Radius of Exposure)
100 ppm H₂S concentration shall trigger activation of this plan.

Escape

Crews shall escape upwind of escaping gas in the event of an emergency release of gas. Escape can be facilitated from the location entrance road. Crews should then block the entrance to the location from the lease road so as not to allow anyone traversing into a hazardous area. The blockade should be at a safe distance outside of the ROE. There are no homes or buildings in or near the ROE.

Assumed 100 ppm ROE = 3000'

100 ppm H₂S concentration shall trigger activation of this plan.

Emergency Procedures

In the event of a release of gas containing H₂S, the first responder(s) must

- **Isolate the area and prevent entry by other persons into the 100 ppm ROE.**
- **Evacuate any public places encompassed by the 100 ppm ROE.**
- **Be equipped with H₂S monitors and air packs in order to control the release.**
- **Use the “buddy system” to ensure no injuries occur during the response**
- **Take precautions to avoid personal injury during this operation.**
- **Contact operator and/or local officials to aid in operation. See list of phone numbers attached.**
- **Have received training in the**
 - **Detection of H₂S, and**
 - **Measures for protection against the gas,**
 - **Equipment used for protection and emergency response.**

Ignition of Gas Source

Should control of the well be considered lost and ignition considered, take care to protect against exposure to Sulfur Dioxide (SO₂). Intentional ignition must be coordinated with the NMOCD and local officials. Additionally the NM State Police may become involved. NM State Police shall be the Incident Command on scene of any major release. Take care to protect downwind whenever there is an ignition of the gas

Characteristics of H₂S and SO₂

Common Name	Chemical Formula	Specific Gravity	Threshold Limit	Hazardous Limit	Lethal Concentration
Hydrogen Sulfide	H₂S	1.189 Air = 1	10 ppm	100 ppm/hr	600 ppm
Sulfur Dioxide	SO₂	2.21 Air = 1	2 ppm	N/A	1000 ppm

Contacting Authorities

Devon Energy Corp. personnel must liaison with local and state agencies to ensure a proper response to a major release. Additionally, the OCD must be notified of the release as soon as possible but no later than 4 hours. Agencies will ask for information such as type and volume of release, wind direction, location of release, etc. Be prepared with all information available. The following call list of essential and potential responders has been prepared for use during a release. Devon Energy Corp. Company response must be in coordination with the State of New Mexico's 'Hazardous Materials Emergency Response Plan' (HMER)

Hydrogen Sulfide Drilling Operation Plan

I. HYDROGEN SULFIDE (H₂S) TRAINING

All personnel, whether regularly assigned, contracted, or employed on an unscheduled basis, will receive training from a qualified instructor in the following areas prior to commencing drilling operations on this well:

1. The hazards and characteristics of hydrogen sulfide (H₂S)
2. The proper use and maintenance of personal protective equipment and life support systems.
3. The proper use of H₂S detectors, alarms, warning systems, briefing areas, evacuation procedures, and prevailing winds.
4. The proper techniques for first aid and rescue procedures.

In addition, supervisory personnel will be trained in the following areas:

1. The effects of H₂S metal components. If high tensile tubulars are to be used, personnel will be trained in their special maintenance requirements.
2. Corrective action and shut-in procedures when drilling or reworking a well and blowout prevention and well control procedures.
3. The contents and requirements of the H₂S Drilling Operations Plan and Public Protection Plan.

There will be an initial training session just prior to encountering a known or probable H₂S zone (within 3 days or 500 feet) and weekly H₂S and well control drills for all personnel in each crew. The initial training session shall include a review of the site specific H₂S Drilling Operations Plan and the Public Protection Plan.

II. HYDROGEN SULFIDE TRAINING

Note: All H₂S safety equipment and systems will be installed, tested, and operational when drilling reaches a depth of 500 feet above, or three days prior to penetrating the first zone containing or reasonably expected to contain H₂S.

1. Well Control Equipment

- A. Flare line
- B. Choke manifold – Remotely Operated
- C. Blind rams and pipe rams to accommodate all pipe sizes with properly sized closing unit
- D. Auxiliary equipment may include if applicable: annular preventer and rotating head.
- E. Mud/Gas Separator

2. Protective equipment for essential personnel:

30-minute SCBA units located at briefing areas, as indicated on well site diagram, with escape units available in the top doghouse. As it may be difficult to communicate audibly while wearing these units, hand signals shall be utilized.

3. H₂S detection and monitoring equipment:

Portable H₂S monitors positioned on location for best coverage and response. These units have warning lights which activate when H₂S levels reach 10 ppm and audible sirens which activate at 15 ppm. Sensor locations:

- Bell nipple
- Possum Belly/Shale shaker
- Rig floor
- Choke manifold
- Cellar

Visual warning systems:

- A. Wind direction indicators as shown on well site diagram
- B. Caution/ Danger signs shall be posted on roads providing direct access to locations. Signs will be painted a high visibility yellow with black lettering of sufficient size to be reasonable distance from the immediate location. Bilingual signs will be used when appropriate.

4. Mud program:

The mud program has been designed to minimize the volume of H₂S circulated to surface. Proper mud weight, safe drilling practices and the use of H₂S scavengers will minimize hazards when penetrating H₂S bearing zones.

5. Metallurgy:

- A. All drill strings, casings, tubing, wellhead, blowout preventer, drilling spool, kill lines, choke manifold lines, and valves shall be H₂S trim.
- B. All elastomers used for packing and seals shall be H₂S trim.

6. Communication:

- A. Company personnel have/use cellular telephones in the field.
- B. Land line (telephone) communications at Office

7. Well testing:

- A. Drill stem testing will be performed with a minimum number of personnel in the immediate vicinity, which are necessary to safety and adequately conduct the test. The drill stem testing will be conducted during daylight hours and formation fluids will not be flowed to the surface. All drill-stem-testing operations conducted in an H₂S environment will use the closed chamber method of testing.
- B. There will be no drill stem testing.

<u>Devon Energy Corp. Company Call List</u>		
Drilling Supervisor – Basin – Mark Kramer		405-823-4796
EHS Professional – Laura Wright		405-439-8129
<u>Agency Call List</u>		
<u>Lea County (575)</u>	Hobbs	
	Lea County Communication Authority	393-3981
	State Police	392-5588
	City Police	397-9265
	Sheriff's Office	393-2515
	Ambulance	911
	Fire Department	397-9308
	LEPC (Local Emergency Planning Committee)	393-2870
	NMOCD	393-6161
	US Bureau of Land Management	393-3612
<u>Eddy County (575)</u>	Carlsbad	
	State Police	885-3137
	City Police	885-2111
	Sheriff's Office	887-7551
	Ambulance	911
	Fire Department	885-3125
	LEPC (Local Emergency Planning Committee)	887-3798
	US Bureau of Land Management	887-6544
	NM Emergency Response Commission (Santa Fe)	(505) 476-9600
	24 HR	(505) 827-9126
	National Emergency Response Center	(800) 424-8802
	National Pollution Control Center: Direct	(703) 872-6000
	For Oil Spills	(800) 280-7118
	Emergency Services	
	Wild Well Control	(281) 784-4700
	Cudd Pressure Control	(915) 699-0139 (915) 563-3356
	Halliburton	(575) 746-2757
	B. J. Services	(575) 746-3569
<u>Give GPS position:</u>	Native Air – Emergency Helicopter – Hobbs (TX & NM)	(800) 642-7828
	Flight For Life - Lubbock, TX	(806) 743-9911
	Aerocare - Lubbock, TX	(806) 747-8923
	Med Flight Air Amb - Albuquerque, NM	(575) 842-4433
	Lifeguard Air Med Svc. Albuquerque, NM	(800) 222-1222
	Poison Control (24/7)	(575) 272-3115
	Oil & Gas Pipeline 24 Hour Service	(800) 364-4366
	NOAA – Website - www.nhc.noaa.gov	

Prepared in conjunction with
Dave Small



WCDSC Permian NM

Eddy County (NAD 83 NM Eastern)

Sec 10-T26S-R31E

Thoroughbred 10-3 Fed Com 711H

Wellbore #1

Plan: Permit Plan 1

Standard Planning Report - Geographic

20 June, 2019

Planning Report - Geographic

Database:	EDM r5000.141_Prod US	Local Co-ordinate Reference	Well Thoroughbred 10-3 Fed Com 711H
Company:	WCDSC Permian NM	TVD Reference:	RKB @ 3265.50ft
Project:	Eddy County (NAD 83 NM Eastern)	MD Reference:	RKB @ 3265.50ft
Site:	Sec 10-T26S-R31E	North Reference:	Grid
Well:	Thoroughbred 10-3 Fed Com 711H	Survey Calculation Method:	Minimum Curvature
Wellbore:	Wellbore #1		
Design:	Permit Plan 1		

Project	Eddy County (NAD 83 NM Eastern)		
Map System:	US State Plane 1983	System Datum:	Mean Sea Level
Geo Datum:	North American Datum 1983		
Map Zone:	New Mexico Eastern Zone		

Site	Sec 10-T26S-R31E		
Site Position:	Map	Northing:	382,457.83 usft
From:		Easting:	0.00 usft
Position Uncertainty:	0.00 ft	Slot Radius:	13-3/16 "
		Latitude:	32.039419
		Longitude:	-106.080279
		Grid Convergence:	-0.93 °

Well	Thoroughbred 10-3 Fed Com 711H		
Well Position	+N/-S	0.00 ft	Northing:
	+E/-W	0.00 ft	Easting:
Position Uncertainty	0.50 ft	Wellhead Elevation:	Ground Level:

Wellbore	Wellbore #1		
Magnetics	Model Name	Sample Date	Declination
			(°)
	IGRF2015	6/17/2019	6.82
			Dip Angle
			(°)
			Field Strength
			(nT)
			47,610.19025170

Design	Permit Plan 1		
Audit Notes:			
Version:	Phase:	PROTOTYPE	Tie On Depth:
			0.00
Vertical Section:	Depth From (TVD)	+N/-S	+E/-W
	(ft)	(ft)	(ft)
	0.00	0.00	0.00
			Direction
			(°)
			359.62

Plan Survey Tool Program	Date	6/20/2019		
Depth From	Depth To	Survey	Tool Name	Remarks
(ft)	(ft)	(Wellbore)		
1	0.00	18,832.25 Permit Plan 1 (Wellbore #1)	MWD+HDGM	
			OWSG MWD + HDGM	

Plan Sections										
Measured	Inclination	Azimuth	Vertical	+N/-S	+E/-W	Dogleg	Build	Turn	TFO	Target
Depth	(°)	(°)	Depth	(ft)	(ft)	Rate	Rate	Rate	(°)	
(ft)			(ft)			(°/100usft)	(°/100usft)	(°/100usft)		
0.00	0.00	0.00	0.00	0.00	0.00	0.00	0.00	0.00	0.00	
4,500.00	0.00	0.00	4,500.00	0.00	0.00	0.00	0.00	0.00	0.00	
4,665.51	1.66	186.71	4,665.48	-2.37	-0.28	1.00	1.00	0.00	186.71	
10,454.12	1.66	186.71	10,451.68	-168.42	-19.81	0.00	0.00	0.00	0.00	
10,564.45	0.00	0.00	10,562.00	-170.00	-20.00	1.50	-1.50	0.00	180.00	
10,914.49	0.00	0.00	10,912.04	-170.00	-20.00	0.00	0.00	0.00	0.00	
11,814.50	90.00	359.78	11,485.00	402.95	-22.18	10.00	10.00	0.00	359.78	PBHL - Thoroughbred
18,832.25	90.00	359.78	11,485.00	7,420.66	-48.91	0.00	0.00	0.00	0.00	PBHL - Thoroughbred

Planning Report - Geographic

Database:	EDM r5000.141_Prod US	Local Co-ordinate Reference	Well Thoroughbred 10-3 Fed Com 711H
Company:	WCDSC Permian NM	TVD Reference:	RKB @ 3265.50ft
Project:	Eddy County (NAD 83 NM Eastern)	MD Reference:	RKB @ 3265.50ft
Site:	Sec 10-T26S-R31E	North Reference:	Grid
Well:	Thoroughbred 10-3 Fed Com 711H	Survey Calculation Method:	Minimum Curvature
Wellbore:	Wellbore #1		
Design:	Permit Plan 1		

Planned Survey										
Measured Depth (ft)	Inclination (°)	Azimuth (°)	Vertical Depth (ft)	+N/-S (ft)	+E/-W (ft)	Map Northing (usft)	Map Easting (usft)	Latitude	Longitude	
0.00	0.00	0.00	0.00	0.00	0.00	382,642.42	714,777.09	32.050728	-103.773525	
100.00	0.00	0.00	100.00	0.00	0.00	382,642.42	714,777.09	32.050728	-103.773525	
200.00	0.00	0.00	200.00	0.00	0.00	382,642.42	714,777.09	32.050728	-103.773525	
300.00	0.00	0.00	300.00	0.00	0.00	382,642.42	714,777.09	32.050728	-103.773525	
400.00	0.00	0.00	400.00	0.00	0.00	382,642.42	714,777.09	32.050728	-103.773525	
500.00	0.00	0.00	500.00	0.00	0.00	382,642.42	714,777.09	32.050728	-103.773525	
600.00	0.00	0.00	600.00	0.00	0.00	382,642.42	714,777.09	32.050728	-103.773525	
700.00	0.00	0.00	700.00	0.00	0.00	382,642.42	714,777.09	32.050728	-103.773525	
800.00	0.00	0.00	800.00	0.00	0.00	382,642.42	714,777.09	32.050728	-103.773525	
900.00	0.00	0.00	900.00	0.00	0.00	382,642.42	714,777.09	32.050728	-103.773525	
1,000.00	0.00	0.00	1,000.00	0.00	0.00	382,642.42	714,777.09	32.050728	-103.773525	
1,100.00	0.00	0.00	1,100.00	0.00	0.00	382,642.42	714,777.09	32.050728	-103.773525	
1,200.00	0.00	0.00	1,200.00	0.00	0.00	382,642.42	714,777.09	32.050728	-103.773525	
1,300.00	0.00	0.00	1,300.00	0.00	0.00	382,642.42	714,777.09	32.050728	-103.773525	
1,400.00	0.00	0.00	1,400.00	0.00	0.00	382,642.42	714,777.09	32.050728	-103.773525	
1,500.00	0.00	0.00	1,500.00	0.00	0.00	382,642.42	714,777.09	32.050728	-103.773525	
1,600.00	0.00	0.00	1,600.00	0.00	0.00	382,642.42	714,777.09	32.050728	-103.773525	
1,700.00	0.00	0.00	1,700.00	0.00	0.00	382,642.42	714,777.09	32.050728	-103.773525	
1,800.00	0.00	0.00	1,800.00	0.00	0.00	382,642.42	714,777.09	32.050728	-103.773525	
1,900.00	0.00	0.00	1,900.00	0.00	0.00	382,642.42	714,777.09	32.050728	-103.773525	
2,000.00	0.00	0.00	2,000.00	0.00	0.00	382,642.42	714,777.09	32.050728	-103.773525	
2,100.00	0.00	0.00	2,100.00	0.00	0.00	382,642.42	714,777.09	32.050728	-103.773525	
2,200.00	0.00	0.00	2,200.00	0.00	0.00	382,642.42	714,777.09	32.050728	-103.773525	
2,300.00	0.00	0.00	2,300.00	0.00	0.00	382,642.42	714,777.09	32.050728	-103.773525	
2,400.00	0.00	0.00	2,400.00	0.00	0.00	382,642.42	714,777.09	32.050728	-103.773525	
2,500.00	0.00	0.00	2,500.00	0.00	0.00	382,642.42	714,777.09	32.050728	-103.773525	
2,600.00	0.00	0.00	2,600.00	0.00	0.00	382,642.42	714,777.09	32.050728	-103.773525	
2,700.00	0.00	0.00	2,700.00	0.00	0.00	382,642.42	714,777.09	32.050728	-103.773525	
2,800.00	0.00	0.00	2,800.00	0.00	0.00	382,642.42	714,777.09	32.050728	-103.773525	
2,900.00	0.00	0.00	2,900.00	0.00	0.00	382,642.42	714,777.09	32.050728	-103.773525	
3,000.00	0.00	0.00	3,000.00	0.00	0.00	382,642.42	714,777.09	32.050728	-103.773525	
3,100.00	0.00	0.00	3,100.00	0.00	0.00	382,642.42	714,777.09	32.050728	-103.773525	
3,200.00	0.00	0.00	3,200.00	0.00	0.00	382,642.42	714,777.09	32.050728	-103.773525	
3,300.00	0.00	0.00	3,300.00	0.00	0.00	382,642.42	714,777.09	32.050728	-103.773525	
3,400.00	0.00	0.00	3,400.00	0.00	0.00	382,642.42	714,777.09	32.050728	-103.773525	
3,500.00	0.00	0.00	3,500.00	0.00	0.00	382,642.42	714,777.09	32.050728	-103.773525	
3,600.00	0.00	0.00	3,600.00	0.00	0.00	382,642.42	714,777.09	32.050728	-103.773525	
3,700.00	0.00	0.00	3,700.00	0.00	0.00	382,642.42	714,777.09	32.050728	-103.773525	
3,800.00	0.00	0.00	3,800.00	0.00	0.00	382,642.42	714,777.09	32.050728	-103.773525	
3,900.00	0.00	0.00	3,900.00	0.00	0.00	382,642.42	714,777.09	32.050728	-103.773525	
4,000.00	0.00	0.00	4,000.00	0.00	0.00	382,642.42	714,777.09	32.050728	-103.773525	
4,100.00	0.00	0.00	4,100.00	0.00	0.00	382,642.42	714,777.09	32.050728	-103.773525	
4,200.00	0.00	0.00	4,200.00	0.00	0.00	382,642.42	714,777.09	32.050728	-103.773525	
4,300.00	0.00	0.00	4,300.00	0.00	0.00	382,642.42	714,777.09	32.050728	-103.773525	
4,400.00	0.00	0.00	4,400.00	0.00	0.00	382,642.42	714,777.09	32.050728	-103.773525	
4,500.00	0.00	0.00	4,500.00	0.00	0.00	382,642.42	714,777.09	32.050728	-103.773525	
4,600.00	1.00	186.71	4,600.00	-0.87	-0.10	382,641.55	714,776.98	32.050726	-103.773525	
4,665.51	1.66	186.71	4,665.48	-2.37	-0.28	382,640.04	714,776.81	32.050721	-103.773526	
4,700.00	1.66	186.71	4,699.96	-3.36	-0.40	382,639.06	714,776.69	32.050719	-103.773526	
4,800.00	1.66	186.71	4,799.92	-6.23	-0.73	382,636.19	714,776.35	32.050711	-103.773527	
4,900.00	1.66	186.71	4,899.88	-9.10	-1.07	382,633.32	714,776.02	32.050703	-103.773529	
5,000.00	1.66	186.71	4,999.84	-11.97	-1.41	382,630.45	714,775.68	32.050695	-103.773530	
5,100.00	1.66	186.71	5,099.80	-14.84	-1.75	382,627.58	714,775.34	32.050687	-103.773531	
5,200.00	1.66	186.71	5,199.75	-17.71	-2.08	382,624.71	714,775.00	32.050679	-103.773532	

Planning Report - Geographic

Database:	EDM r5000.141_Prod US	Local Co-ordinate Reference	Well Thoroughbred 10-3 Fed Com 711H
Company:	WCDSC Permian NM	TVD Reference:	RKB @ 3265.50ft
Project:	Eddy County (NAD 83 NM Eastern)	MD Reference:	RKB @ 3265.50ft
Site:	Sec 10-T26S-R31E	North Reference:	Grid
Well:	Thoroughbred 10-3 Fed Com 711H	Survey Calculation Method:	Minimum Curvature
Wellbore:	Wellbore #1		
Design:	Permit Plan 1		

Planned Survey									
Measured Depth (ft)	Inclination (°)	Azimuth (°)	Vertical Depth (ft)	+N/-S (ft)	+E/-W (ft)	Map Northing (usft)	Map Easting (usft)	Latitude	Longitude
5,300.00	1.66	186.71	5,299.71	-20.57	-2.42	382,621.84	714,774.67	32.050671	-103.773533
5,400.00	1.66	186.71	5,399.67	-23.44	-2.76	382,618.98	714,774.33	32.050664	-103.773534
5,500.00	1.66	186.71	5,499.63	-26.31	-3.10	382,616.11	714,773.99	32.050656	-103.773535
5,600.00	1.66	186.71	5,599.59	-29.18	-3.43	382,613.24	714,773.65	32.050648	-103.773537
5,700.00	1.66	186.71	5,699.55	-32.05	-3.77	382,610.37	714,773.32	32.050640	-103.773538
5,800.00	1.66	186.71	5,799.50	-34.92	-4.11	382,607.50	714,772.98	32.050632	-103.773539
5,900.00	1.66	186.71	5,899.46	-37.78	-4.45	382,604.63	714,772.64	32.050624	-103.773540
6,000.00	1.66	186.71	5,999.42	-40.65	-4.78	382,601.77	714,772.30	32.050616	-103.773541
6,100.00	1.66	186.71	6,099.38	-43.52	-5.12	382,598.90	714,771.97	32.050608	-103.773542
6,200.00	1.66	186.71	6,199.34	-46.39	-5.46	382,596.03	714,771.63	32.050600	-103.773543
6,300.00	1.66	186.71	6,299.30	-49.26	-5.80	382,593.16	714,771.29	32.050593	-103.773545
6,400.00	1.66	186.71	6,399.25	-52.13	-6.13	382,590.29	714,770.95	32.050585	-103.773546
6,500.00	1.66	186.71	6,499.21	-55.00	-6.47	382,587.42	714,770.62	32.050577	-103.773547
6,600.00	1.66	186.71	6,599.17	-57.86	-6.81	382,584.55	714,770.28	32.050569	-103.773548
6,700.00	1.66	186.71	6,699.13	-60.73	-7.14	382,581.69	714,769.94	32.050561	-103.773549
6,800.00	1.66	186.71	6,799.09	-63.60	-7.48	382,578.82	714,769.60	32.050553	-103.773550
6,900.00	1.66	186.71	6,899.04	-66.47	-7.82	382,575.95	714,769.27	32.050545	-103.773551
7,000.00	1.66	186.71	6,999.00	-69.34	-8.16	382,573.08	714,768.93	32.050537	-103.773552
7,100.00	1.66	186.71	7,098.96	-72.21	-8.49	382,570.21	714,768.59	32.050530	-103.773554
7,200.00	1.66	186.71	7,198.92	-75.07	-8.83	382,567.34	714,768.25	32.050522	-103.773555
7,300.00	1.66	186.71	7,298.88	-77.94	-9.17	382,564.48	714,767.92	32.050514	-103.773556
7,400.00	1.66	186.71	7,398.84	-80.81	-9.51	382,561.61	714,767.58	32.050506	-103.773557
7,500.00	1.66	186.71	7,498.79	-83.68	-9.84	382,558.74	714,767.24	32.050498	-103.773558
7,600.00	1.66	186.71	7,598.75	-86.55	-10.18	382,555.87	714,766.90	32.050490	-103.773559
7,700.00	1.66	186.71	7,698.71	-89.42	-10.52	382,553.00	714,766.57	32.050482	-103.773560
7,800.00	1.66	186.71	7,798.67	-92.29	-10.86	382,550.13	714,766.23	32.050474	-103.773562
7,900.00	1.66	186.71	7,898.63	-95.15	-11.19	382,547.26	714,765.89	32.050467	-103.773563
8,000.00	1.66	186.71	7,998.59	-98.02	-11.53	382,544.40	714,765.55	32.050459	-103.773564
8,100.00	1.66	186.71	8,098.54	-100.89	-11.87	382,541.53	714,765.22	32.050451	-103.773565
8,200.00	1.66	186.71	8,198.50	-103.76	-12.21	382,538.66	714,764.88	32.050443	-103.773566
8,300.00	1.66	186.71	8,298.46	-106.63	-12.54	382,535.79	714,764.54	32.050435	-103.773567
8,400.00	1.66	186.71	8,398.42	-109.50	-12.88	382,532.92	714,764.20	32.050427	-103.773568
8,500.00	1.66	186.71	8,498.38	-112.36	-13.22	382,530.05	714,763.87	32.050419	-103.773570
8,600.00	1.66	186.71	8,598.34	-115.23	-13.56	382,527.19	714,763.53	32.050411	-103.773571
8,700.00	1.66	186.71	8,698.29	-118.10	-13.89	382,524.32	714,763.19	32.050403	-103.773572
8,800.00	1.66	186.71	8,798.25	-120.97	-14.23	382,521.45	714,762.85	32.050396	-103.773573
8,900.00	1.66	186.71	8,898.21	-123.84	-14.57	382,518.58	714,762.52	32.050388	-103.773574
9,000.00	1.66	186.71	8,998.17	-126.71	-14.91	382,515.71	714,762.18	32.050380	-103.773575
9,100.00	1.66	186.71	9,098.13	-129.58	-15.24	382,512.84	714,761.84	32.050372	-103.773576
9,200.00	1.66	186.71	9,198.09	-132.44	-15.58	382,509.98	714,761.50	32.050364	-103.773578
9,300.00	1.66	186.71	9,298.04	-135.31	-15.92	382,507.11	714,761.17	32.050356	-103.773579
9,400.00	1.66	186.71	9,398.00	-138.18	-16.26	382,504.24	714,760.83	32.050348	-103.773580
9,500.00	1.66	186.71	9,497.96	-141.05	-16.59	382,501.37	714,760.49	32.050340	-103.773581
9,600.00	1.66	186.71	9,597.92	-143.92	-16.93	382,498.50	714,760.15	32.050333	-103.773582
9,700.00	1.66	186.71	9,697.88	-146.79	-17.27	382,495.63	714,759.82	32.050325	-103.773583
9,800.00	1.66	186.71	9,797.84	-149.65	-17.61	382,492.76	714,759.48	32.050317	-103.773584
9,900.00	1.66	186.71	9,897.79	-152.52	-17.94	382,489.90	714,759.14	32.050309	-103.773585
10,000.00	1.66	186.71	9,997.75	-155.39	-18.28	382,487.03	714,758.80	32.050301	-103.773587
10,100.00	1.66	186.71	10,097.71	-158.26	-18.62	382,484.16	714,758.47	32.050293	-103.773588
10,200.00	1.66	186.71	10,197.67	-161.13	-18.96	382,481.29	714,758.13	32.050285	-103.773589
10,300.00	1.66	186.71	10,297.63	-164.00	-19.29	382,478.42	714,757.79	32.050277	-103.773590
10,400.00	1.66	186.71	10,397.58	-166.87	-19.63	382,475.55	714,757.45	32.050270	-103.773591
10,454.12	1.66	186.71	10,451.68	-168.42	-19.81	382,474.00	714,757.27	32.050265	-103.773592
10,500.00	0.97	186.71	10,497.55	-169.46	-19.94	382,472.96	714,757.15	32.050262	-103.773592

Planning Report - Geographic

Database:	EDM r5000.141_Prod US	Local Co-ordinate Reference	Well Thoroughbred 10-3 Fed Com 711H
Company:	WCDSC Permian NM	TVD Reference:	RKB @ 3265.50ft
Project:	Eddy County (NAD 83 NM Eastern)	MD Reference:	RKB @ 3265.50ft
Site:	Sec 10-T26S-R31E	North Reference:	Grid
Well:	Thoroughbred 10-3 Fed Com 711H	Survey Calculation Method:	Minimum Curvature
Wellbore:	Wellbore #1		
Design:	Permit Plan 1		

Planned Survey										
Measured Depth (ft)	Inclination (°)	Azimuth (°)	Vertical Depth (ft)	+N/-S (ft)	+E/-W (ft)	Map Northing (usft)	Map Easting (usft)	Latitude	Longitude	
10,564.45	0.00	0.00	10,562.00	-170.00	-20.00	382,472.42	714,757.09	32.050261	-103.773592	
10,600.00	0.00	0.00	10,597.55	-170.00	-20.00	382,472.42	714,757.09	32.050261	-103.773592	
10,700.00	0.00	0.00	10,697.55	-170.00	-20.00	382,472.42	714,757.09	32.050261	-103.773592	
10,800.00	0.00	0.00	10,797.55	-170.00	-20.00	382,472.42	714,757.09	32.050261	-103.773592	
10,900.00	0.00	0.00	10,897.55	-170.00	-20.00	382,472.42	714,757.09	32.050261	-103.773592	
10,914.49	0.00	0.00	10,912.04	-170.00	-20.00	382,472.42	714,757.09	32.050261	-103.773592	
KOP @ 10914' MD, 50' FSL, 330' FWL										
11,000.00	8.55	359.78	10,997.23	-163.63	-20.02	382,478.79	714,757.06	32.050278	-103.773592	
11,100.00	18.55	359.78	11,094.32	-140.23	-20.11	382,502.19	714,756.97	32.050343	-103.773592	
11,200.00	28.55	359.78	11,185.88	-100.33	-20.27	382,542.09	714,756.82	32.050452	-103.773592	
11,300.00	38.55	359.78	11,269.11	-45.13	-20.48	382,597.29	714,756.61	32.050604	-103.773592	
11,400.00	48.55	359.78	11,341.50	23.68	-20.74	382,666.10	714,756.35	32.050793	-103.773592	
11,500.00	58.55	359.78	11,400.83	104.02	-21.04	382,746.44	714,756.04	32.051014	-103.773591	
11,507.00	59.25	359.78	11,404.45	110.01	-21.07	382,752.43	714,756.02	32.051031	-103.773591	
FTP @ 11507' MD, 330' FSL, 330' FWL										
11,600.00	68.55	359.78	11,445.32	193.44	-21.38	382,835.85	714,755.70	32.051260	-103.773591	
11,700.00	78.55	359.78	11,473.60	289.22	-21.75	382,931.64	714,755.34	32.051523	-103.773590	
11,800.00	88.55	359.78	11,484.82	388.46	-22.13	383,030.88	714,754.96	32.051796	-103.773590	
11,814.50	90.00	359.78	11,485.00	402.95	-22.18	383,045.37	714,754.90	32.051836	-103.773590	
11,900.00	90.00	359.78	11,485.00	488.46	-22.51	383,130.88	714,754.58	32.052071	-103.773589	
12,000.00	90.00	359.78	11,485.00	588.46	-22.89	383,230.88	714,754.20	32.052346	-103.773589	
12,100.00	90.00	359.78	11,485.00	688.46	-23.27	383,330.87	714,753.82	32.052621	-103.773589	
12,200.00	90.00	359.78	11,485.00	788.46	-23.65	383,430.87	714,753.44	32.052896	-103.773588	
12,300.00	90.00	359.78	11,485.00	888.46	-24.03	383,530.87	714,753.05	32.053170	-103.773588	
12,400.00	90.00	359.78	11,485.00	988.46	-24.41	383,630.87	714,752.67	32.053445	-103.773587	
12,500.00	90.00	359.78	11,485.00	1,088.45	-24.79	383,730.87	714,752.29	32.053720	-103.773587	
12,600.00	90.00	359.78	11,485.00	1,188.45	-25.17	383,830.87	714,751.91	32.053995	-103.773586	
12,700.00	90.00	359.78	11,485.00	1,288.45	-25.55	383,930.87	714,751.53	32.054270	-103.773586	
12,800.00	90.00	359.78	11,485.00	1,388.45	-25.94	384,030.87	714,751.15	32.054545	-103.773585	
12,900.00	90.00	359.78	11,485.00	1,488.45	-26.32	384,130.87	714,750.77	32.054820	-103.773585	
13,000.00	90.00	359.78	11,485.00	1,588.45	-26.70	384,230.87	714,750.39	32.055095	-103.773585	
13,100.00	90.00	359.78	11,485.00	1,688.45	-27.08	384,330.87	714,750.01	32.055370	-103.773584	
13,200.00	90.00	359.78	11,485.00	1,788.45	-27.46	384,430.86	714,749.63	32.055644	-103.773584	
13,300.00	90.00	359.78	11,485.00	1,888.45	-27.84	384,530.86	714,749.25	32.055919	-103.773583	
13,400.00	90.00	359.78	11,485.00	1,988.45	-28.22	384,630.86	714,748.87	32.056194	-103.773583	
13,500.00	90.00	359.78	11,485.00	2,088.45	-28.60	384,730.86	714,748.48	32.056469	-103.773582	
13,600.00	90.00	359.78	11,485.00	2,188.45	-28.98	384,830.86	714,748.10	32.056744	-103.773582	
13,700.00	90.00	359.78	11,485.00	2,288.45	-29.36	384,930.86	714,747.72	32.057019	-103.773581	
13,800.00	90.00	359.78	11,485.00	2,388.45	-29.74	385,030.86	714,747.34	32.057294	-103.773581	
13,900.00	90.00	359.78	11,485.00	2,488.44	-30.13	385,130.86	714,746.96	32.057569	-103.773581	
14,000.00	90.00	359.78	11,485.00	2,588.44	-30.51	385,230.86	714,746.58	32.057844	-103.773580	
14,100.00	90.00	359.78	11,485.00	2,688.44	-30.89	385,330.86	714,746.20	32.058118	-103.773580	
14,200.00	90.00	359.78	11,485.00	2,788.44	-31.27	385,430.86	714,745.82	32.058393	-103.773579	
14,300.00	90.00	359.78	11,485.00	2,888.44	-31.65	385,530.85	714,745.44	32.058668	-103.773579	
14,400.00	90.00	359.78	11,485.00	2,988.44	-32.03	385,630.85	714,745.06	32.058943	-103.773578	
14,500.00	90.00	359.78	11,485.00	3,088.44	-32.41	385,730.85	714,744.68	32.059218	-103.773578	
14,600.00	90.00	359.78	11,485.00	3,188.44	-32.79	385,830.85	714,744.29	32.059493	-103.773577	
14,700.00	90.00	359.78	11,485.00	3,288.44	-33.17	385,930.85	714,743.91	32.059768	-103.773577	
14,800.00	90.00	359.78	11,485.00	3,388.44	-33.55	386,030.85	714,743.53	32.060043	-103.773577	
14,900.00	90.00	359.78	11,485.00	3,488.44	-33.93	386,130.85	714,743.15	32.060318	-103.773576	
15,000.00	90.00	359.78	11,485.00	3,588.44	-34.31	386,230.85	714,742.77	32.060592	-103.773576	
15,100.00	90.00	359.78	11,485.00	3,688.44	-34.70	386,330.85	714,742.39	32.060867	-103.773575	
15,200.00	90.00	359.78	11,485.00	3,788.44	-35.08	386,430.85	714,742.01	32.061142	-103.773575	

Planning Report - Geographic

Database:	EDM r5000.141_Prod US	Local Co-ordinate Reference	Well Thoroughbred 10-3 Fed Com 711H
Company:	WCDSC Permian NM	TVD Reference:	RKB @ 3265.50ft
Project:	Eddy County (NAD 83 NM Eastern)	MD Reference:	RKB @ 3265.50ft
Site:	Sec 10-T26S-R31E	North Reference:	Grid
Well:	Thoroughbred 10-3 Fed Com 711H	Survey Calculation Method:	Minimum Curvature
Wellbore:	Wellbore #1		
Design:	Permit Plan 1		

Planned Survey

Measured Depth (ft)	Inclination (°)	Azimuth (°)	Vertical Depth (ft)	+N/-S (ft)	+E/-W (ft)	Map Northing (usft)	Map Easting (usft)	Latitude	Longitude
15,300.00	90.00	359.78	11,485.00	3,888.43	-35.46	386,530.85	714,741.63	32.061417	-103.773574
15,400.00	90.00	359.78	11,485.00	3,988.43	-35.84	386,630.84	714,741.25	32.061692	-103.773574
15,500.00	90.00	359.78	11,485.00	4,088.43	-36.22	386,730.84	714,740.87	32.061967	-103.773573
15,600.00	90.00	359.78	11,485.00	4,188.43	-36.60	386,830.84	714,740.49	32.062242	-103.773573
15,700.00	90.00	359.78	11,485.00	4,288.43	-36.98	386,930.84	714,740.11	32.062517	-103.773573
15,800.00	90.00	359.78	11,485.00	4,388.43	-37.36	387,030.84	714,739.72	32.062792	-103.773572
15,900.00	90.00	359.78	11,485.00	4,488.43	-37.74	387,130.84	714,739.34	32.063066	-103.773572
16,000.00	90.00	359.78	11,485.00	4,588.43	-38.12	387,230.84	714,738.96	32.063341	-103.773571
16,100.00	90.00	359.78	11,485.00	4,688.43	-38.50	387,330.84	714,738.58	32.063616	-103.773571
16,200.00	90.00	359.78	11,485.00	4,788.43	-38.88	387,430.84	714,738.20	32.063891	-103.773570
16,300.00	90.00	359.78	11,485.00	4,888.43	-39.27	387,530.84	714,737.82	32.064166	-103.773570
16,400.00	90.00	359.78	11,485.00	4,988.43	-39.65	387,630.84	714,737.44	32.064441	-103.773569
16,472.00	90.00	359.78	11,485.00	5,060.43	-39.92	387,702.83	714,737.17	32.064639	-103.773569
Cross section @ 16472' MD, 0' FSL, 330' FWL									
16,500.00	90.00	359.78	11,485.00	5,088.43	-40.03	387,730.83	714,737.06	32.064716	-103.773569
16,600.00	90.00	359.78	11,485.00	5,188.43	-40.41	387,830.83	714,736.68	32.064991	-103.773569
16,700.00	90.00	359.78	11,485.00	5,288.42	-40.79	387,930.83	714,736.30	32.065266	-103.773568
16,800.00	90.00	359.78	11,485.00	5,388.42	-41.17	388,030.83	714,735.92	32.065540	-103.773568
16,900.00	90.00	359.78	11,485.00	5,488.42	-41.55	388,130.83	714,735.54	32.065815	-103.773567
17,000.00	90.00	359.78	11,485.00	5,588.42	-41.93	388,230.83	714,735.15	32.066090	-103.773567
17,100.00	90.00	359.78	11,485.00	5,688.42	-42.31	388,330.83	714,734.77	32.066365	-103.773566
17,200.00	90.00	359.78	11,485.00	5,788.42	-42.69	388,430.83	714,734.39	32.066640	-103.773566
17,300.00	90.00	359.78	11,485.00	5,888.42	-43.07	388,530.83	714,734.01	32.066915	-103.773565
17,400.00	90.00	359.78	11,485.00	5,988.42	-43.46	388,630.83	714,733.63	32.067190	-103.773565
17,500.00	90.00	359.78	11,485.00	6,088.42	-43.84	388,730.82	714,733.25	32.067465	-103.773565
17,600.00	90.00	359.78	11,485.00	6,188.42	-44.22	388,830.82	714,732.87	32.067740	-103.773564
17,700.00	90.00	359.78	11,485.00	6,288.42	-44.60	388,930.82	714,732.49	32.068014	-103.773564
17,800.00	90.00	359.78	11,485.00	6,388.42	-44.98	389,030.82	714,732.11	32.068289	-103.773563
17,900.00	90.00	359.78	11,485.00	6,488.42	-45.36	389,130.82	714,731.73	32.068564	-103.773563
18,000.00	90.00	359.78	11,485.00	6,588.41	-45.74	389,230.82	714,731.35	32.068839	-103.773562
18,100.00	90.00	359.78	11,485.00	6,688.41	-46.12	389,330.82	714,730.96	32.069114	-103.773562
18,200.00	90.00	359.78	11,485.00	6,788.41	-46.50	389,430.82	714,730.58	32.069389	-103.773561
18,300.00	90.00	359.78	11,485.00	6,888.41	-46.88	389,530.82	714,730.20	32.069664	-103.773561
18,400.00	90.00	359.78	11,485.00	6,988.41	-47.26	389,630.82	714,729.82	32.069939	-103.773561
18,500.00	90.00	359.78	11,485.00	7,088.41	-47.64	389,730.82	714,729.44	32.070214	-103.773560
18,600.00	90.00	359.78	11,485.00	7,188.41	-48.03	389,830.81	714,729.06	32.070488	-103.773560
18,700.00	90.00	359.78	11,485.00	7,288.41	-48.41	389,930.81	714,728.68	32.070763	-103.773559
18,800.00	90.00	359.78	11,485.00	7,388.41	-48.79	390,030.81	714,728.30	32.071038	-103.773559
18,832.24	90.00	359.78	11,485.00	7,420.65	-48.91	390,063.05	714,728.18	32.071127	-103.773559
PBHL & LTP @ 18832' MD, 2310' FSL, 330' FWL									
18,832.25	90.00	359.78	11,485.00	7,420.66	-48.91	390,063.06	714,728.18	32.071127	-103.773559

Design Targets

Target Name	Dip Angle (°)	Dip Dir. (°)	TVD (ft)	+N/-S (ft)	+E/-W (ft)	Northing (usft)	Easting (usft)	Latitude	Longitude
- hit/miss target									
- Shape									
PBHL - Thoroughbred 1I	0.00	0.00	0.00	7,420.66	-48.91	390,063.06	714,728.18	32.071127	-103.773559
- plan misses target center by 7420.82ft at 0.00ft MD (0.00 TVD, 0.00 N, 0.00 E)									
- Point									

Planning Report - Geographic

Database:	EDM r5000.141_Prod US	Local Co-ordinate Reference	Well Thoroughbred 10-3 Fed Com 711H
Company:	WCDSC Permian NM	TVD Reference:	RKB @ 3265.50ft
Project:	Eddy County (NAD 83 NM Eastern)	MD Reference:	RKB @ 3265.50ft
Site:	Sec 10-T26S-R31E	North Reference:	Grid
Well:	Thoroughbred 10-3 Fed Com 711H	Survey Calculation Method:	Minimum Curvature
Wellbore:	Wellbore #1		
Design:	Permit Plan 1		

Plan Annotations				
Measured Depth (ft)	Vertical Depth (ft)	Local Coordinates		Comment
		+N/-S (ft)	+E/-W (ft)	
10,914.49	10,912.04	-170.00	-20.00	KOP @ 10914' MD, 50' FSL, 330' FWL
11,507.00	11,404.45	110.01	-21.07	FTP @ 11507' MD, 330' FSL, 330' FWL
16,472.00	11,485.00	5,060.43	-39.92	Cross section @ 16472' MD, 0' FSL, 330' FWL
18,832.24	11,485.00	7,420.65	-48.91	PBHL & LTP @ 18832' MD, 2310' FSL, 330' FWL

Devon Energy

WELL DETAILS: Thoroughbred 10-3 Fed Com 711H

RKB @ 3265.50ft

3240.50

Northing
382642.42

Easting
714777.09

Latitude
32.050728

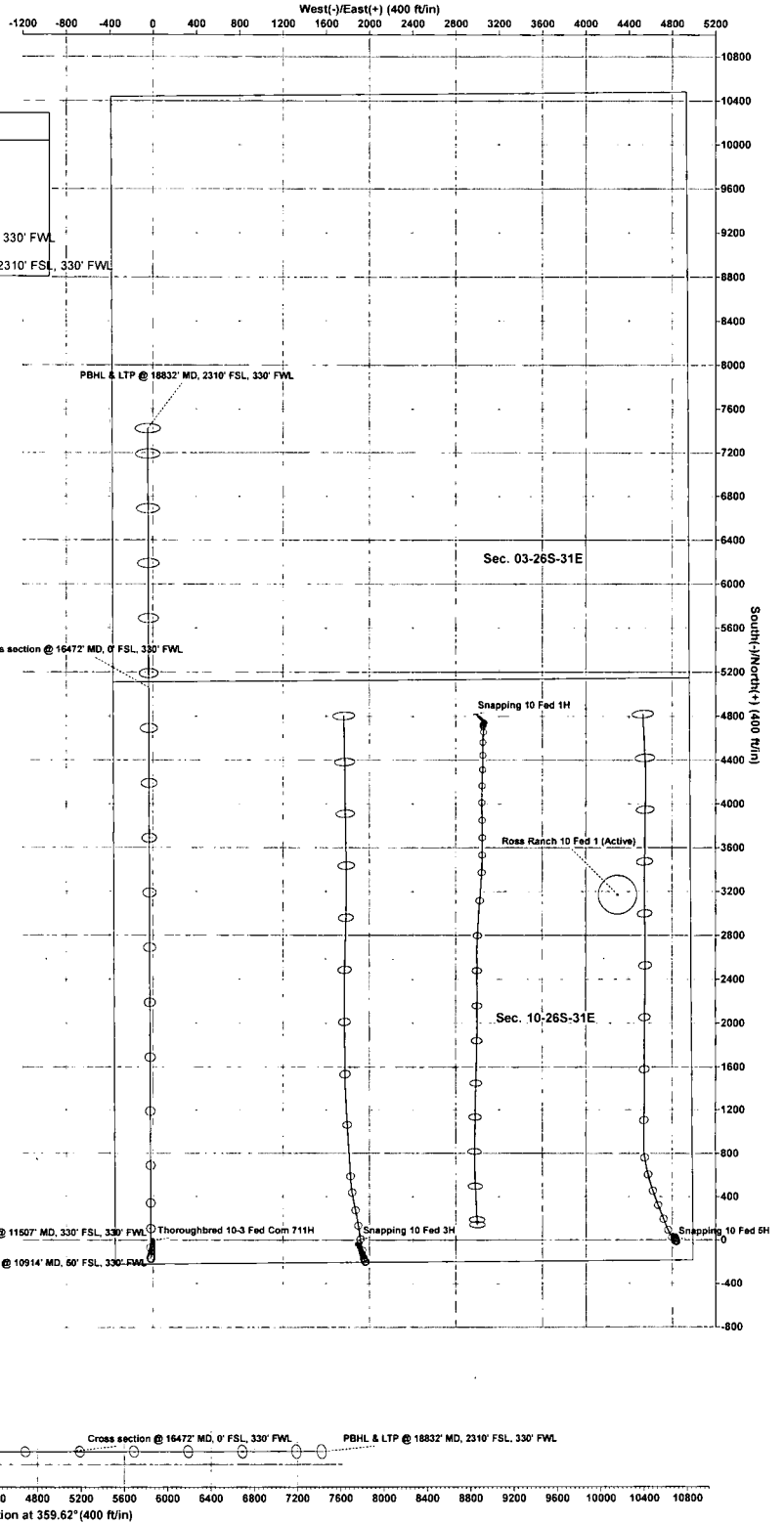
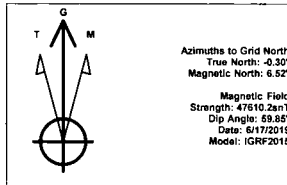
Longitude
-103.773525

SECTION DETAILS

Permit Plan 1

MD	Inc	Azi	TVD	+N/-S	+E/-W	Dleg	VSecl	Annotation
0.00	0.00	0.00	0.00	0.00	0.00	0.00	0.00	
500.00	0.00	0.00	4500.00	0.00	0.00	0.00	0.00	
565.51	1.66	186.71	4665.48	-2.37	-0.28	1.00	-2.37	
454.12	1.66	186.71	10451.68	-168.42	-19.81	0.00	-168.28	
564.45	0.00	0.00	10562.00	-170.00	-20.00	1.50	-169.86	
914.49	0.00	0.00	10912.04	-170.00	-20.00	0.00	-169.86	KOP @ 10914' MD, 50' FSL, 330' FWL
814.50	80.00	359.78	11485.00	402.95	-22.18	10.00	403.09	
832.25	80.00	359.78	11485.00	7420.65	-48.91	0.00	7420.82	PBHL & LTP @ 18832' MD, 2310' FSL, 330' FWL

devon



1. Geologic Formations

TVD of target	11485	Pilot hole depth	N/A
MD at TD:	18832	Deepest expected fresh water	

Basin

Formation	Depth (TVD) from KB	Water/Mineral Bearing/Target Zone?	Hazards*
RUSTLER	1418		
SALADO	1724		
BASE OF SALT	3854		
DELAWARE	4083		
BONE SPRING	8010		
BONE SPRING 1ST	8967		
BONE SPRING 2ND	9663		
BONE SPRING 3RD	10929		
WOLFCAMP	11345		

*H2S, water flows, loss of circulation, abnormal pressures, etc.

2. Casing Program (Primary Design)

Hole Size	Casing Interval		Csg. Size	Wt (PPF)	Grade	Conn	Min SF Collapse	Min SF Burst	Min SF Tension
	From	To							
17 1/2	0	1443 TVD	13 3/8	48.0	H40	STC	1.125	1.25	1.6
9 7/8	0	10929 TVD	7 5/8	29.7	P110	Flushmax III	1.125	1.25	1.6
6 3/4	0	TD	5 1/2	20.0	P110	Vam SG	1.125	1.25	1.6
BLM Minimum Safety Factor							1.125	1	1.6 Dry 1.8 Wet

- All casing strings will be tested in accordance with Onshore Oil and Gas Order #2 IILB.1.h Must have table for contingency casing.
- Rustler top will be validated via drilling parameters (i.e. reduction in ROP) and surface casing setting depth revised accordingly if needed.
- A variance is requested for collapse rating on intermediate casing. Operator will keep pipe full while running casing.
- Int casing shoe will be selected based on drilling data/gamma, setting depth with be revised accordingly if needed.
- A variance is requested to wave the centralizer requirement for the Intermediate casing and production casing.
- A variance is requested to set intermediate casing in the curve if hole conditions dictate that a higher shoe strength is required.

Casing Program (Alternative Design)

Hole Size	Casing Interval		Csg. Size	Wt (PPF)	Grade	Conn	Min SF Collapse	Min SF Burst	Min SF Tension
	From	To							
17 1/2	0	1443 TVD	13 3/8	48.0	H40	STC	1.125	1.25	1.6
9 7/8	0	10929 TVD	8 5/8	32.0	P110	TLW	1.125	1.25	1.6
7 7/8	0	TD	5 1/2	17.0	P110	BTC	1.125	1.25	1.6
BLM Minimum Safety Factor							1.125	1	1.6 Dry 1.8 Wet

- All casing strings will be tested in accordance with Onshore Oil and Gas Order #2 IILB.1.h Must have table for contingency casing.
- Rustler top will be validated via drilling parameters (i.e. reduction in ROP) and surface casing setting depth revised accordingly if needed.
- A variance is requested for collapse rating on intermediate casing. Operator will keep pipe full while running casing.
- Int casing shoe will be selected based on drilling data/gamma, setting depth with be revised accordingly if needed.
- A variance is requested to wave the centralizer requirement for the Intermediate casing and production casing.
- Variance requested to drill 10.625" hole instead of 9.875" for intermediate 1, the 8.625" connection will change from TLW to BTC.
- A variance is requested to set intermediate casing in the curve if hole conditions dictate that a higher shoe strength is required.

Thoroughbred 10-3 Fed Com 711H

	Y or N
Is casing new? If used, attach certification as required in Onshore Order #1	Y
Does casing meet API specifications? If no, attach casing specification sheet.	Y
Is premium or uncommon casing planned? If yes attach casing specification sheet.	N
Does the above casing design meet or exceed BLM's minimum standards? If not provide justification (loading assumptions, casing design criteria).	Y
Will the intermediate pipe be kept at a minimum 1/3 fluid filled to avoid approaching the collapse pressure rating of the casing?	Y
Is well located within Capitan Reef?	N
If yes, does production casing cement tie back a minimum of 50' above the Reef?	
Is well within the designated 4 string boundary.	
Is well located in SOPA but not in R-111-P?	N
If yes, are the first 2 strings cemented to surface and 3 rd string cement tied back 500' into previous casing?	
Is well located in R-111-P and SOPA?	N
If yes, are the first three strings cemented to surface?	
Is 2 nd string set 100' to 600' below the base of salt?	
Is well located in high Cave/Karst?	N
If yes, are there two strings cemented to surface?	
(For 2 string wells) If yes, is there a contingency casing if lost circulation occurs?	
Is well located in critical Cave/Karst?	N
If yes, are there three strings cemented to surface?	

3. Cementing Program (Primary Design)

Casing	# Sks	TOC	Wt. (lb/gal)	Yld (ft ³ /sack)	Slurry Description
Surface	1083	Surf	13.2	1.44	Lead: Class C Cement + additives
Int 1	718	Surf	9	3.27	Lead: Class C Cement + additives
	783	4000' above shoe	13.2	1.44	Tail: Class H / C + additives
Int 1 Two Stage w/ DV @ TVD of Delaware	856	Surf	9	3.27	1st stage Lead: Class C Cement + additives
	93	500' above shoe	13.2	1.44	1st stage Tail: Class H / C + additives
	425	Surf	9	3.27	2nd stage Lead: Class C Cement + additives
	93	500' above DV	13.2	1.44	2nd stage Tail: Class H / C + additives
Int 1 Intermediate Squeeze	As Needed	Surf	9	1.44	Squeeze Lead: Class C Cement + additives
	718	Surf	9	3.27	Lead: Class C Cement + additives
	783	4000' above shoe	13.2	1.44	Tail: Class H / C + additives
Production	62	8914	9.0	3.3	Lead: Class H / C + additives
	505	10914	13.2	1.4	Tail: Class H / C + additives

If a DV tool is ran the depth(s) will be adjusted based on hole conditions and cement volumes will be adjusted proportionally. Slurry weights will be adjusted based on estimated fracture gradient of the formation. DV tool will be set a minimum of 50 feet below previous casing and a minimum of 200 feet above current shoe. If cement is not returned to surface during the primary cement job on the surface casing string, a planned top job will be conducted immediately after completion of the primary job.

Casing String	% Excess
Surface	50%
Intermediate 1	30%
Intermediate 1 (Two Stage)	25%
Prod	10%

3. Cementing Program (Alternative Design)

Casing	# Sks	TOC	Wt. ppg	Yld (ft3/sack)	Slurry Description
Surface	1083	Surf	13.2	1.44	Lead: Class C Cement + additives
Int 1	485	Surf	9	3.27	Lead: Class C Cement + additives
	465	4000' above shoe	13.2	1.44	Tail: Class H / C + additives
Int 1 Two Stage w DV @ ~4500	503	Surf	9	3.27	1st stage Lead: Class C Cement + additives
	55	500' above shoe	13.2	1.44	1st stage Tail: Class H / C + additives
	313	Surf	9	3.27	2nd stage Lead: Class C Cement + additives
	55	500' above DV	13.2	1.44	2nd stage Tail: Class H / C + additives
Int 1 Intermediate Squeeze	As Needed	Surf	13.2	1.44	Squeeze Lead: Class C Cement + additives
	485	Surf	9	3.27	Lead: Class C Cement + additives
	465	4000' above shoe	13.2	1.44	Tail: Class H / C + additives
Int 1 (10.625" Hole Size)	668	Surf	9	3.27	Lead: Class C Cement + additives
	768	4000' above shoe	13.2	1.44	Tail: Class H / C + additives
Production	117	8914	9.0	3.3	Lead: Class H / C + additives
	1048	10914	13.2	1.4	Tail: Class H / C + additives

If a DV tool is ran the depth(s) will be adjusted based on hole conditions and cement volumes will be adjusted proportionally. Slurry weights will be adjusted based on estimated fracture gradient of the formation. DV tool will be set a minimum of 50 feet below previous casing and a minimum of 200 feet above current shoe. If cement is not returned to surface during the primary cement job on the surface casing string, a planned top job will be conducted immediately after completion of the primary job.

Casing String	% Excess
Surface	50%
Intermediate 1	30%
Intermediate 1 (Two Stage)	25%
Prod	10%

4. Pressure Control Equipment (Three String Design)

BOP installed and tested before drilling which hole?		Size?	Min. Required WP	Type	✓	Tested to:
Int 1	13-5/8"	5M	Annular		X	50% of rated working pressure
			Blind Ram		X	5M
			Pipe Ram			
			Double Ram		X	
			Other*			
Production	13-5/8"	5M	Annular (5M)		X	50% of rated working pressure
			Blind Ram		X	5M
			Pipe Ram			
			Double Ram		X	
			Other*			
			Annular (5M)			
			Blind Ram			
			Pipe Ram			
			Double Ram			
			Other*			
N	A variance is requested for the use of a diverter on the surface casing. See attached for schematic.					
Y	A variance is requested to run a 5 M annular on a 10M system					

5. Mud Program (Three String Design)

Section	Type	Weight (ppg)
Surface	FW Gel	8.5-9
Intermediate	DBE / Cut Brine	10-10.5
Production	OBM	10-10.5

Sufficient mud materials to maintain mud properties and meet minimum lost circulation and weight increase requirements will be kept on location at all times.

What will be used to monitor the loss or gain of fluid?	PVT/Pason/Visual Monitoring
---	-----------------------------

6. Logging and Testing Procedures

Logging, Coring and Testing	
X	Will run GR/CNL from TD to surface (horizontal well - vertical portion of hole). Stated logs run will be in the Completion Report and submitted to the BLM.
	No logs are planned based on well control or offset log information.
	Drill stem test? If yes, explain.
	Coring? If yes, explain.

Additional logs planned	Interval
Resistivity	Int. shoe to KOP
Density	Int. shoe to KOP
X CBL	Production casing
X Mud log	Intermediate shoe to TD
PEX	

7. Drilling Conditions

Condition	Specify what type and where?
BH pressure at deepest TVD	6271
Abnormal temperature	No

Mitigation measure for abnormal conditions. Describe. Lost circulation material/sweeps/mud scavengers.

Hydrogen Sulfide (H₂S) monitors will be installed prior to drilling out the surface shoe. If H₂S is detected in concentrations greater than 100 ppm, the operator will comply with the provisions of Onshore Oil and Gas Order #6. If Hydrogen Sulfide is encountered measured values and formations will be provided to the BLM.

N	H ₂ S is present
Y	H ₂ S plan attached.

8. Other facets of operation

Is this a walking operation? Potentially

- 1 If operator elects, drilling rig will batch drill the surface holes and run/cement surface casing; walking the rig to next wells on the pad.
- 2 The drilling rig will then batch drill the intermediate sections and run/cement intermediate casing; the wellbore will be isolated with a blind flange and pressure gauge installed for monitoring the well before walking to the next well.
- 3 The drilling rig will then batch drill the production hole sections on the wells with OBM, run/cement production casing, and install TA caps or tubing heads for completions.

NOTE: During batch operations the drilling rig will be moved from well to well however, it will not be removed from the pad until all wells have production casing run/cemented.

Will be pre-setting casing? Potentially

- 1 Spudder rig will move in and batch drill surface hole.
 - a. Rig will utilize fresh water based mud to drill surface hole to TD. Solids control will be handled entirely on a closed loop basis.,
- 2 After drilling the surface hole section, the spudder rig will run casing and cement following all of the applicable rules and regulations (OnShore Order 2, all COAs and NMOCD regulations).
- 3 The wellhead will be installed and tested once the surface casing is cut off and the WOC time has been reached.
- 4 A blind flange with the same pressure rating as the wellhead will be installed to seal the wellbore. Pressure will be monitored with a pressure gauge installed on the wellhead.
- 5 Spudder rig operations is expected to take 4-5 days per well on a multi-well pad.
- 6 The NMOCD will be contacted and notified 24 hours prior to commencing spudder rig operations.
- 7 Drilling operations will be performed with drilling rig. At that time an approved BOP stack will be nipped up and tested on the wellhead before drilling operations commences on each well.
 - a. The NMOCD will be contacted / notified 24 hours before the drilling rig moves back on to the pad with the pre-set surface casing.

Attachments

X Directional Plan
 Other, describe

Devon Energy

APD VARIANCE DATA

OPERATOR NAME: Devon Energy

1. SUMMARY OF Variance:

Devon Energy respectfully requests approval for the following additions to the drilling plan:

1. Potential utilization of a spudder rig to pre-set surface casing.

2. Description of Operations

1. A spudder rig contractor may move in their rig to drill the surface hole section and pre-set surface casing on this well.
 - a. After drilling the surface hole section, the rig will run casing and cement following all of the applicable rules and regulations (OnShore Order 2, all COAs and NMOCD regulations).
 - b. Rig will utilize fresh water based mud to drill surface hole to TD.
2. The wellhead will be installed and tested once the surface casing is cut off and the WOC time has been reached.
3. A blind flange with the same pressure rating as the wellhead will be installed to seal the wellbore. Pressure will be monitored with needle valves installed on two wingvalves.
 - a. A means for intervention will be maintained while the drilling rig is not over the well.
4. The BLM will be contacted and notified 24 hours prior to commencing spudder rig operations.
5. Drilling operation will be performed with the big rig. At that time an approved BOP stack will be nipped up and tested on the wellhead before drilling operations commences on each well.
 - a. The BLM will be contacted / notified 24 hours before the big rig moves back on to the pad with the pre-set surface casing.
6. Devon Energy will have supervision on the rig to ensure compliance with all BLM and NMOCD regulations and to oversee operations.
7. Once the rig is removed, Devon Energy will secure the wellhead area by placing a guard rail around the cellar area.