

District I  
1625 N. French Dr., Hobbs, NM 88240  
Phone: (575) 393-6161 Fax: (575) 393-0720  
District II  
811 S. First St., Artesia, NM 88210  
Phone: (575) 748-1283 Fax: (575) 748-9720  
District III  
1000 Rio Brazos Road, Aztec, NM 87410  
Phone: (505) 334-6178 Fax: (505) 334-6170  
District IV  
1220 S. St. Francis Dr., Santa Fe, NM 87505  
Phone: (505) 476-3460 Fax: (505) 476-3462

State of New Mexico  
Energy, Minerals & Natural Resources Department  
OIL CONSERVATION DIVISION  
1220 South St. Francis Dr.  
Santa Fe, NM 87505

RECEIVED

Form C-102  
Revised August 1, 2011  
Submit one copy to appropriate  
District Office

DISTRICT VII-ARTESIA O.C.D.

AMENDED REPORT

WELL LOCATION AND ACREAGE DEDICATION PLAT

<sup>1</sup> API Number <b>30-015-45097</b>	<sup>2</sup> Pool Code <b>98220</b>	<sup>3</sup> Pool Name <b>PURPLE SAGE; WOLFCAMP</b>
<sup>4</sup> Property Code	<sup>5</sup> Property Name <b>BIG SINKS DRAW 25-24 FED COM</b>	<sup>6</sup> Well Number <b>611H</b>
<sup>7</sup> OGRID No. <b>6137</b>	<sup>8</sup> Operator Name <b>DEVON ENERGY PRODUCTION COMPANY, L.P.</b>	<sup>9</sup> Elevation <b>3335.4</b>

<sup>10</sup> Surface Location

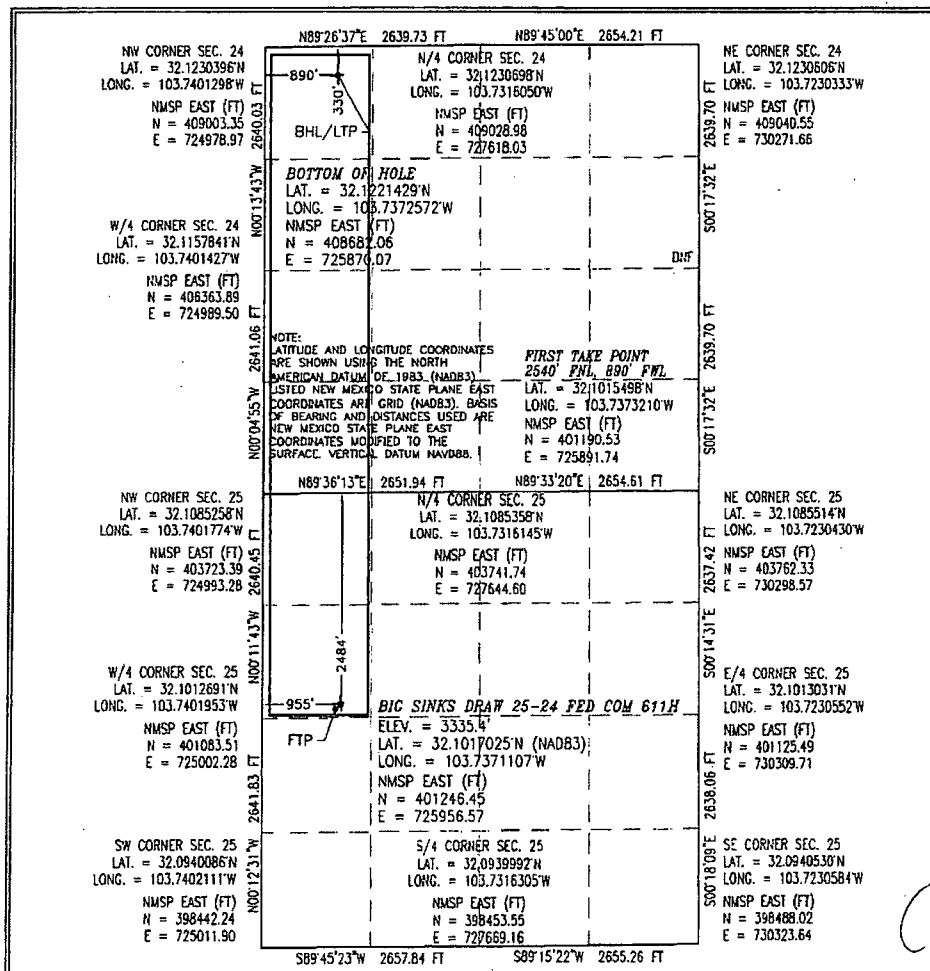
UL or lot no.	Section	Township	Range	Lot Idn	Feet from the	North/South line	Feet from the	East/West line	County
<b>E</b>	<b>25</b>	<b>25 S</b>	<b>31 E</b>		<b>2484</b>	<b>NORTH</b>	<b>955</b>	<b>WEST</b>	<b>EDDY</b>

<sup>11</sup> Bottom Hole Location If Different From Surface

UL or lot no.	Section	Township	Range	Lot Idn	Feet from the	North/South line	Feet from the	East/West line	County
<b>D</b>	<b>24</b>	<b>25 S</b>	<b>31 E</b>		<b>330</b>	<b>NORTH</b>	<b>890</b>	<b>WEST</b>	<b>EDDY</b>

<sup>12</sup> Dedicated Acres <b>240</b>	<sup>13</sup> Joint or Infill	<sup>14</sup> Consolidation Code	<sup>15</sup> Order No.
---	-------------------------------	----------------------------------	-------------------------

No allowable will be assigned to this completion until all interests have been consolidated or a non-standard unit has been approved by the division.



**17 OPERATOR CERTIFICATION**  
I hereby certify that the information contained herein is true and complete to the best of my knowledge and belief, and that this organization either owns a working interest or unleased mineral interest in the land including the proposed bottom hole location or has a right to drill this well at this location pursuant to a contract with an owner of such a mineral or working interest, or to a voluntary pooling agreement or a compulsory pooling order heretofore entered into by the division.

Signature: *Jenny Harms*  
Date: **9-18-2019**

Printed Name: **JENNY HARMS**  
E-mail Address: **JENNY.HARMS@DVN.COM**

**18 SURVEYOR CERTIFICATION**  
I hereby certify that the well location shown on this plat was plotted from field notes of actual surveys made by me or under my supervision, and that the same is true and correct to the best of my belief.

Date of Survey: **AUGUST 1, 2019**

Signature and Seal of Professional Surveyor: *FILIMON F. JARAMILLO*  
Certificate Number: **FILIMON F. JARAMILLO, PLS 12797**  
SURVEY NO. **5660A**

Rw 11-25-19

Intent ☒ As Drilled ☐

API #

Operator Name:	Property Name:	Well Number
<b>DEVON ENERGY PRODUCTION CO., L.P.</b>	<b>BIG SINKS DRAW 25-24 FED COM</b>	<b>611H</b>

Kick Off Point (KOP)

UL	Section	Township	Range	Lot	Feet	From N/S	Feet	From E/W	County
<b>E</b>	<b>25</b>	<b>25S</b>	<b>31E</b>		<b>2590 FNL</b>		<b>890 FWL</b>		<b>83</b>
Latitude					Longitude			NAD	
<b>32.101412</b>					<b>-103.737323</b>			<b>83</b>	

First Take Point (FTP)

UL	Section	Township	Range	Lot	Feet	From N/S	Feet	From E/W	County
<b>E</b>	<b>25</b>	<b>25S</b>	<b>31E</b>		<b>2540</b>	<b>NORTH</b>	<b>890</b>	<b>WEST</b>	<b>EDDY</b>
Latitude					Longitude			NAD	
<b>32.1015498</b>					<b>103.7373210</b>			<b>83</b>	

Last Take Point (LTP)

UL	Section	Township	Range	Lot	Feet	From N/S	Feet	From E/W	County
<b>D</b>	<b>24</b>	<b>25S</b>	<b>31E</b>		<b>330</b>	<b>NORTH</b>	<b>890</b>	<b>WEST</b>	<b>EDDY</b>
Latitude					Longitude			NAD	
<b>32.1221429</b>					<b>103.7372572</b>			<b>83</b>	

Is this well the defining well for the Horizontal Spacing Unit? ☐ NO

Is this well an infill well? ☐ YES

If infill is yes please provide API if available, Operator Name and well number for Defining well for Horizontal Spacing Unit.

API #

Operator Name:	Property Name:	Well Number

KZ 06/29/2018