

District I
1625 N. French Dr., Hobbs, NM 88240
Phone: (575) 393-6161 Fax: (575) 393-0720
District II
811 S. First St., Artesia, NM 88210
Phone: (575) 748-1283 Fax: (575) 748-9720
District III
1000 Rio Brazos Road, Aztec, NM 87410
Phone: (505) 334-6178 Fax: (505) 334-6170
District IV
1220 S. St. Francis Dr., Santa Fe, NM 87505
Phone: (505) 476-3460 Fax: (505) 476-3462

State of New Mexico
Energy, Minerals & Natural Resources
Department
OIL CONSERVATION DIVISION
1220 South St. Francis Dr.
Santa Fe, NM 87505

FORM C-102

Revised August 1, 2011

Submit one copy to appropriate

District Office

☐ AMENDED REPORT

WELL LOCATION AND ACREAGE DEDICATION PLAT

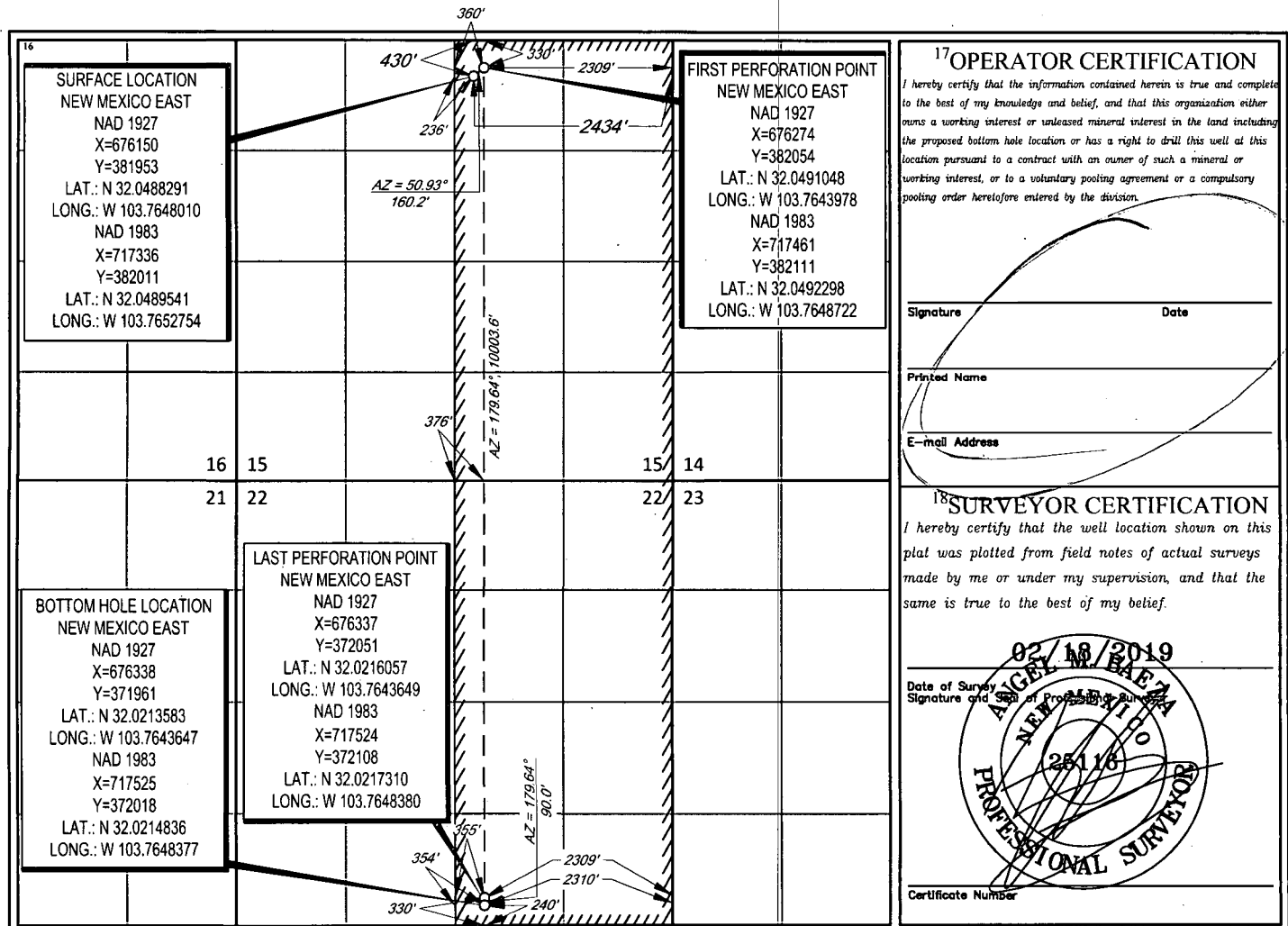
¹ API Number 30-015-46565	² Pool Code 98220	³ Pool Name Parp/125 AGE WOLF CAMP
⁴ Property Code 326329	⁵ Property Name BOROS FEDERAL	
⁷ OCRID No. 228937	⁸ Operator Name MATADOR PRODUCTION COMPANY	⁶ Well Number 203H
		⁹ Elevation 3228'

¹⁰ Surface Location									
UL or lot no. B	Section 15	Township 26-S	Range 31-E	Lot Idn -	Feet from the 430'	North/South line NORTH	Feet from the 2434'	East/West line EAST	County EDDY

¹¹ Bottom Hole Location If Different From Surface									
UL or lot no. 0	Section 22	Township 26-S	Range 31-E	Lot Idn -	Feet from the 240'	North/South line SOUTH	Feet from the 2310'	East/West line EAST	County EDDY

¹² Dedicated Acres 640	¹³ Joint or Infill	¹⁴ Consolidation Code	¹⁵ Order No. 2311
--------------------------------------	-------------------------------	----------------------------------	---------------------------------

No allowable will be assigned to this completion until all interests have been consolidated or a non-standard unit has been approved by the division.



¹⁷ OPERATOR CERTIFICATION	
I hereby certify that the information contained herein is true and complete to the best of my knowledge and belief, and that this organization either owns a working interest or unleased mineral interest in the land including the proposed bottom hole location or has a right to drill this well at this location pursuant to a contract with an owner of such a mineral or working interest, or to a voluntary pooling agreement or a compulsory pooling order heretofore entered by the division.	
Signature	Date
Printed Name	
E-mail Address	
¹⁸ SURVEYOR CERTIFICATION	
I hereby certify that the well location shown on this plat was plotted from field notes of actual surveys made by me or under my supervision, and that the same is true to the best of my belief.	
Date of Survey 02/18/2019	
Signature and Seal of Professional Surveyor ANGEL M. BAEZA 25116 PROFESSIONAL SURVEYOR	
Certificate Number	

RMP 1-6-2020

Need Signature

District I
1625 N. French Dr., Hobbs, NM 88240
Phone: (575) 393-6161 Fax: (575) 393-0720
District II
811 S. First St., Artesia, NM 88210
Phone: (575) 748-1283 Fax: (575) 748-9720
District III
1000 Rio Brazos Road, Aztec, NM 87410
Phone: (505) 334-6178 Fax: (505) 334-6170
District IV
1220 S. St. Francis Dr., Santa Fe, NM 87505
Phone: (505) 476-3460 Fax: (505) 476-3462

State of New Mexico
Energy, Minerals & Natural Resources
Department
OIL CONSERVATION DIVISION
1220 South St. Francis Dr.
Santa Fe, NM 87505

FORM C-102
Revised August 1, 2011
Submit one copy to appropriate
District Office
☐ AMENDED REPORT

WELL LOCATION AND ACREAGE DEDICATION PLAT

¹ API Number	² Pool Code	³ Pool Name
⁴ Property Code	⁵ Property Name BOROS FEDERAL	⁶ Well Number 203H
⁷ OGRID No.	⁸ Operator Name MATADOR PRODUCTION COMPANY	⁹ Elevation 3228'

¹⁰ Surface Location									
UL or lot no. B	Section 15	Township 26-S	Range 31-E	Lot Idn -	Feet from the 430'	North/South line NORTH	Feet from the 2434'	East/West line EAST	County EDDY

¹¹ Bottom Hole Location If Different From Surface									
UL or lot no. O	Section 22	Township 26-S	Range 31-E	Lot Idn -	Feet from the 240'	North/South line SOUTH	Feet from the 2310'	East/West line EAST	County EDDY

¹² Dedicated Acres 640	¹³ Joint or Infill	¹⁴ Consolidation Code	¹⁵ Order No.
--------------------------------------	-------------------------------	----------------------------------	-------------------------

No allowable will be assigned to this completion until all interests have been consolidated or a non-standard unit has been approved by the division.

