

District I1625 N. French Dr., Hobbs, NM 88240
Phone: (575) 393-6161 Fax: (575) 393-0720**District II**811 S. First St., Artesia, NM 88210
Phone: (575) 748-1283 Fax: (575) 748-9720**District III**1000 Rio Brazos Road, Aztec, NM 87410
Phone: (505) 334-6178 Fax: (505) 334-6170**District IV**1220 S. St. Francis Dr., Santa Fe, NM 87505
Phone: (505) 476-3460 Fax: (505) 476-3462State of New Mexico
Energy, Minerals & Natural Resources Department**OIL CONSERVATION DIVISION**

1220 South St. Francis Dr.

Santa Fe, NM 87505

Form C-102

Revised August 1, 2011

Submit one copy to
appropriate District Office☐ AMENDED REPORT**WELL LOCATION AND ACREAGE DEDICATION PLAT**

¹ API Number 30-015-4689	² Pool Code 65010	³ Pool Name WINCHESTER; BONE SPRING
⁴ Property Code 327304	⁵ Property Name URANINITE 32-33 STATE FED COM	⁶ Well Number 333H
⁷ OGRID No. 6137	⁸ Operator Name DEVON ENERGY PRODUCTION COMPANY, L.P.	⁹ Elevation 3302.8'

¹⁰ **Surface Location**

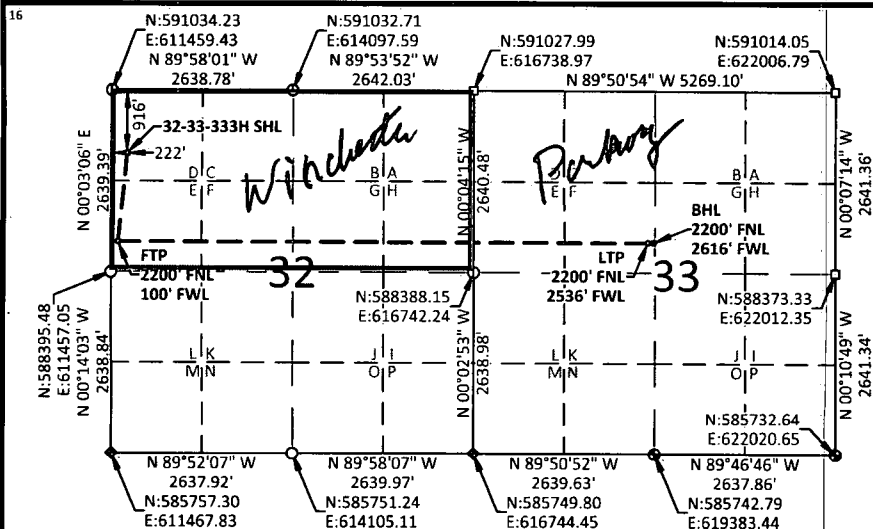
UL or lot no. D	Section 32	Township 19-S	Range 29-E	Lot Idn	Feet from the 916	North/South line NORTH	Feet from the	East/West line WEST	County EDDY
---------------------------	----------------------	-------------------------	----------------------	---------	-----------------------------	----------------------------------	---------------	-------------------------------	-----------------------

¹¹ **Bottom Hole Location If Different From Surface**

UL or lot no. F	Section 33	Township 19-S	Range 29-E	Lot Idn	Feet from the 2200	North/South line NORTH	Feet from the 2616	East/West line WEST	County EDDY
---------------------------	----------------------	-------------------------	----------------------	---------	------------------------------	----------------------------------	------------------------------	-------------------------------	-----------------------

¹² Dedicated Acres 320	¹³ Joint or Infill	¹⁴ Consolidation Code	¹⁵ Order No. Two plats submitted per NMOCD
---	-------------------------------	----------------------------------	---

No allowable will be assigned to this completion until all interests have been consolidated or a non-standard unit has been approved by the division.



**URANINITE 32-33
STATE FED COM 333H**
ELEV: 3302.8'
LAT: 32.622078°
LON: -104.104856°
N: 590118.30
E: 611680.56

FIRST TAKE POINT
LAT: 32.618550°
LON: -104.105265°
N: 588834.66
E: 611557.42

LAST TAKE POINT
LAT: 32.618467°
LON: -104.080191°
N: 588821.75
E: 619277.30

BOTTOM HOLE LOCATION
LAT: 32.618465°
LON: -104.079932°
N: 588821.54
E: 619357.29

● USGLO BRASS CAP

◆ IRON PIPE

⊙ NO.4 REBAR

□ STONE

NOTES:

1. BEARINGS SHOWN ARE GRID BASED ON THE NEW MEXICO STATE PLANE EAST ZONE COORDINATE SYSTEM (3001), NAD 83 (2011), BASED FROM GPS OBSERVATIONS, OCCUPYING A WHS CONTROL POINT (5/8" REBAR), LOCATED AT NORTH: 589022.345, EAST: 613596.863, ELEVATION: 3316.2, DETERMINED BY AN OPUS SOLUTION ON MARCH 27TH, 2019.
2. DISTANCES DEPICTED HEREON ARE REPORTED AS GROUND DISTANCE IN US SURVEY FEET USING A COMBINED SCALE FACTOR OF 1.000220989
3. ELEVATIONS ARE OF NAVD 88 COMPUTED USING GEIOD 128.

¹⁷ **OPERATOR CERTIFICATION**

I hereby certify that the information contained herein is true and complete to the best of my knowledge and belief, and that this organization either owns a working interest or unleased mineral interest in the land including the proposed bottom hole location or has a right to drill this well at this location pursuant to a contract with an owner of such a mineral or working interest, or to a voluntary pooling agreement or a compulsory pooling order heretofore entered by the division.

Erin Workman 07/10/19
Signature Date

Erin Workman
Printed Name
Erin.workman@dvn.com
E-mail Address

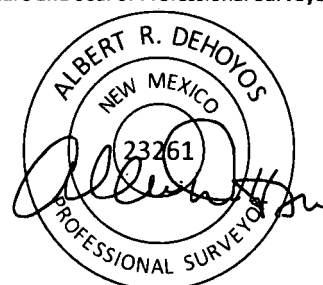
¹⁸ **SURVEYOR CERTIFICATION**

I hereby certify that the well location shown on this plat was plotted from field notes of actual surveys made by me or under my supervision, and that the same is true and correct to the best of my belief.

05/21/2019

Date of Survey

Signature and Seal of Professional Surveyor:



Certificate No. 23261 Albert Dehoyos
Drawn by: TMW Checked by: ARD Date: 06/04/2019

2 of 2

RW3-16-20

RECEIVED

MAR 11 2020

EMNRD-OCDARTESIA

Intent ☒As Drilled ☐

API #

Operator Name:

DEVON ENERGY PRODUCTION COMPANY, L.P.

Property Name:

URANINITE 32-33 STATE FED COM

Well Number

333H

Kick Off Point (KOP)

UL	Section 32	Township 19S	Range 29E	Lot	Feet 2200	From N/S NORTH	Feet 50	From E/W WEST	County EDDY
Latitude 32.618549					Longitude -104.105391			NAD 83	

First Take Point (FTP)

UL E	Section 32	Township 19-S	Range 29-E	Lot	Feet 2200	From N/S NORTH	Feet 100	From E/W WEST	County EDDY
Latitude 32.618550°					Longitude -104.105265°			NAD 83	

Last Take Point (LTP)

UL F	Section 33	Township 19-S	Range 29-E	Lot	Feet 2200	From N/S NORTH	Feet 2536	From E/W WEST	County EDDY
Latitude 32.618467°					Longitude -104.080191°			NAD 83	

Is this well the defining well for the Horizontal Spacing Unit?

☐ NO

Is this well an infill well?

☐ YES

If infill is yes provide API if available, Operator name and well number for Defining well for Horizontal Spacing Unit.

API #

Operator Name:

DEVON ENERGY PRODUCTION COMPANY, L.P.

Property Name:

URANINITE 32-33 STATE FED COM

Well Number

332H

KZ 06/29/2018