

District I

1625 N. French Dr., Hobbs, NM 88240
Phone: (575) 393-6161 Fax: (575) 393-0720

District II

811 S. First St., Artesia, NM 88210
Phone: (575) 748-1283 Fax: (575) 748-9720

District III

1000 Rio Brazos Road, Aztec, NM 87410
Phone: (505) 334-6178 Fax: (505) 334-6170

District IV

1220 S. St. Francis Dr., Santa Fe, NM 87505
Phone: (505) 476-3460 Fax: (505) 476-3462

State of New Mexico
Energy, Minerals & Natural Resources Department

OIL CONSERVATION DIVISION

1220 South St. Francis Dr.

Santa Fe, NM 87505

Form C-102

Revised August 1, 2011

Submit one copy to
Appropriate District Office

☐ AMENDED REPORT

WELL LOCATION AND ACREAGE DEDICATION PLAT

| | | |
|---|--|--|
| ¹ API Number 30-15-46840 | ² Pool Code 49622 65410 | ³ Pool Name Parkway BONE SPRING |
| ⁴ Property Code 321304 | ⁵ Property Name 49622 URANINITE 32-33 STATE FED COM | ⁶ Well Number 332H |
| ⁷ OGRID No. 6137 | ⁸ Operator Name DEVON ENERGY PRODUCTION COMPANY, L.P. | ⁹ Elevation 3302.9' |

¹⁰ Surface Location

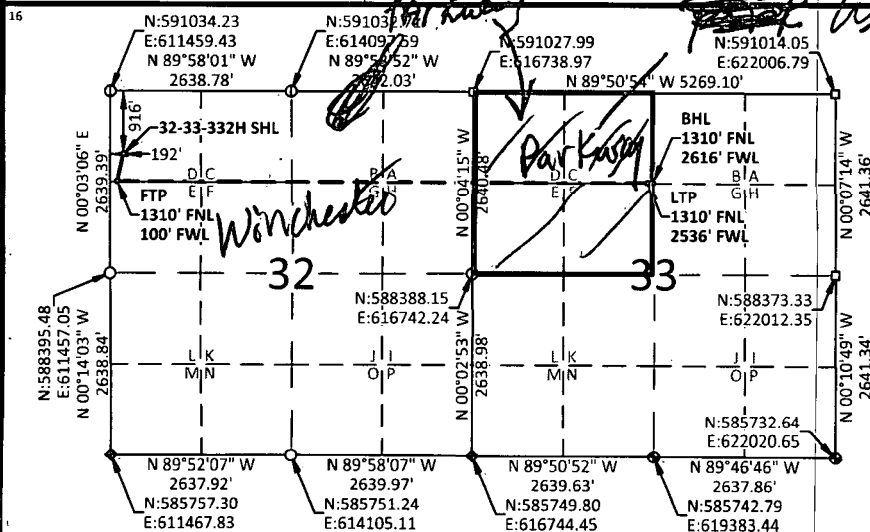
| UL or lot no. | Section | Township | Range | Lot Idn | Feet from the | North/South line | Feet from the | East/West line | County |
|---------------|---------|----------|-------|---------|---------------|------------------|---------------|----------------|--------|
| D | 32 | 19-S | 29-E | | 916 | NORTH | 192 | WEST | EDDY |

¹¹ Bottom Hole Location If Different From Surface

| UL or lot no. | Section | Township | Range | Lot Idn | Feet from the | North/South line | Feet from the | East/West line | County |
|---------------|---------|----------|-------|---------|---------------|------------------|---------------|----------------|--------|
| C | 33 | 19-S | 29-E | | 1310 | NORTH | 2616 | WEST | EDDY |

| | | | |
|---|---|--|---|
| ¹² Dedicated Acres 160 | ¹³ Joint or Infill 160 | ¹⁴ Consolidation Code 160 | ¹⁵ Order No. Two plats submitted per NMOCD |
|---|---|--|---|

No allowable will be assigned to this completion until all interests have been consolidated or a non-standard unit has been approved by the division.



URANINITE 32-33
STATE FED COM 332H
ELEV: 3302.9'
LAT: 32.622078°
LON: -104.104953°
N: 590118.32
E: 611650.56

FIRST TAKE POINT
LAT: 32.620996°
LON: -104.105256°
N: 589724.47
E: 611558.23

LAST TAKE POINT
LAT: 32.620912°
LON: -104.080190°
N: 589711.56
E: 619275.52

BOTTOM HOLE LOCATION
LAT: 32.620911°
LON: -104.079930°
N: 589711.35
E: 619355.51

● USGLO BRASS CAP ◆ IRON PIPE ⊙ NO.4 REBAR □ STONE

Two plats submitted per NMOCD

NOTES:

1. BEARINGS SHOWN ARE GRID BASED ON THE NEW MEXICO STATE PLANE EAST ZONE COORDINATE SYSTEM (3001), NAD 83 (2011), BASED FROM GPS OBSERVATIONS, OCCUPYING A WHS CONTROL POINT (5/8" REBAR), LOCATED AT NORTH: 589022.345, EAST: 613596.863, ELEVATION: 3316.2, DETERMINED BY AN OPUS SOLUTION ON MARCH 27TH, 2019.
2. DISTANCES DEPICTED HEREON ARE REPORTED AS GROUND DISTANCE IN US SURVEY FEET USING A COMBINED SCALE FACTOR OF 1.000220989
3. ELEVATIONS ARE OF NAVD 88 COMPUTED USING GEOID 12B.

¹⁷ OPERATOR CERTIFICATION

I hereby certify that the information contained herein is true and complete to the best of my knowledge and belief, and that this organization either owns a working interest or unleased mineral interest in the land including the proposed bottom hole location or has a right to drill this well at this location pursuant to a contract with an owner of such a mineral or working interest, or to a voluntary pooling agreement or a compulsory pooling order heretofore entered by the division.

Signature **Erin Workman** Date **07/01/2019**

Printed Name
Erin.workman@dvn.com

E-mail Address

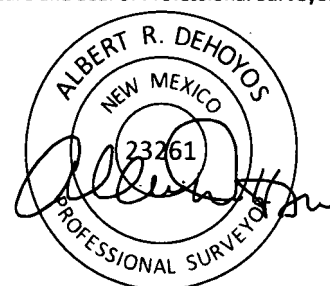
¹⁸ SURVEYOR CERTIFICATION

I hereby certify that the well location shown on this plat was plotted from field notes of actual surveys made by me or under my supervision, and that the same is true and correct to the best of my belief.

05/21/2019

Date of Survey

Signature and Seal of Professional Surveyor:



Certificate No. 23261

Albert Dehoyos

Drawn by: TMW

Checked by: ARD

Date: 06/12/2019

10 of 2