

DISTRICT I
1625 N. French Dr., Hobbs, NM 88240

DISTRICT II
811 South First, Artesia, NM 88210

DISTRICT III
1000 Rio Brazos Rd., Aztec, NM 87410

DISTRICT IV
2040 South Pacheco, Santa Fe, NM 87505

State of New Mexico
Energy, Minerals and Natural Resources Department

Form C-102
Revised March 17, 1999

Submit to Appropriate District Office
State Lease - 4 Copies
Fee Lease - 3 Copies

OIL CONSERVATION DIVISION

2040 South Pacheco
Santa Fe, New Mexico 87504-2088

☐ AMENDED REPORT

WELL LOCATION AND ACREAGE DEDICATION PLAT

API Number 30-015-33858	Pool Code 47545	Pool Name NASH DRAW-DELAWARE/BS/Avalon Sand
Property Code 001796	Property Name POKER LAKE UNIT	Well Number 211
OGRID No. 001801	Operator Name BASS ENTERPRISES PRODUCTION COMPANY	Elevation 3176'

Surface Location

UL or lot No. J	Section 18	Township 24 S	Range 30 E	Lot Idn	Feet from the 1980	North/South line SOUTH	Feet from the 1980	East/West line EAST	County EDDY
--------------------	---------------	------------------	---------------	---------	-----------------------	---------------------------	-----------------------	------------------------	----------------

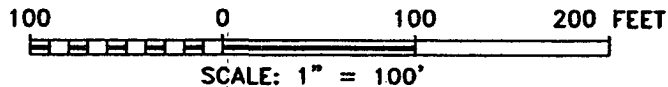
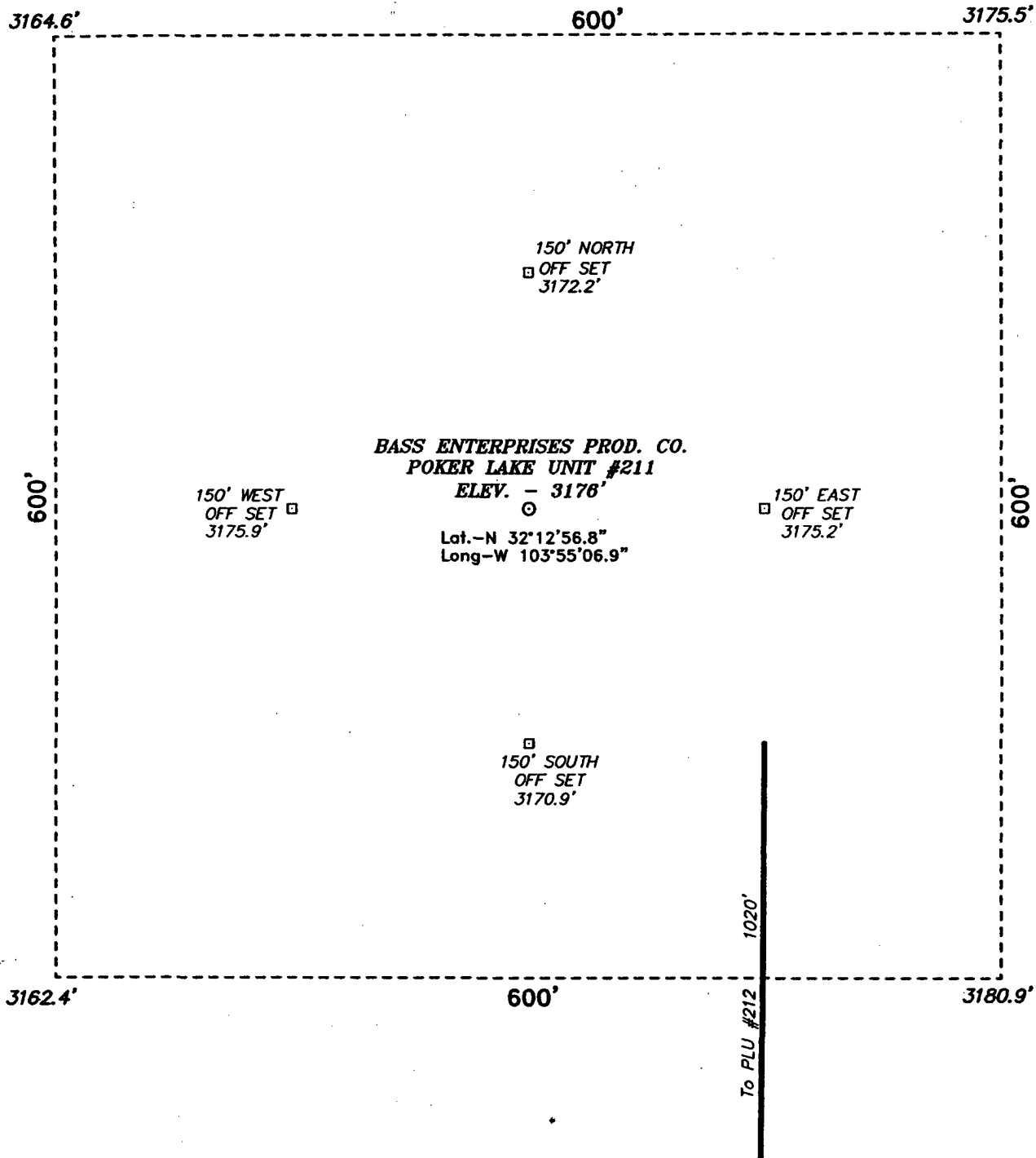
Bottom Hole Location If Different From Surface

UL or lot No.	Section	Township	Range	Lot Idn	Feet from the	North/South line	Feet from the	East/West line	County
Dedicated Acres 40	Joint or Infill N	Consolidation Code	Order No.						

NO ALLOWABLE WILL BE ASSIGNED TO THIS COMPLETION UNTIL ALL INTERESTS HAVE BEEN CONSOLIDATED
OR A NON-STANDARD UNIT HAS BEEN APPROVED BY THE DIVISION

<p>RECEIVED MAR 29 2006 OCU-ARTESIA</p>				<p>OPERATOR CERTIFICATION</p> <p>I hereby certify the the information contained herein is true and complete to the best of my knowledge and belief.</p> <p><i>William R. Dannels</i> Signature W.R. DANNELS Printed Name DIVISION DRILLING SUPT. Title 4/30/04 Date</p>	
LOT 1 - 40.80 AC.	40.83 AC.	40.82 AC.	40.83 AC.	<p>SURVEYOR CERTIFICATION</p> <p>I hereby certify that the well location shown on this plat was plotted from field notes of actual surveys made by me or under my supervision and the same is true and correct.</p> <p><i>GARY L. JONES</i> Date Surveyed Signature & Seal Professional Surveyor 7977 W.O. No. 4138 Certificate No. Gary L. Jones 7977 BASIN SURVEYS</p>	
LOT 2 - 40.85 AC.	40.81 AC.	40.79 AC.	40.79 AC.		
LOT 3 - 40.80 AC.	40.80 AC.	<p>40.77 AC.</p> <p>3164.6' 3175.5'</p> <p>3162.4' 3180.9'</p> <p>LAT - N32°12'56.8" LONG - W103°55'06.9"</p> <p>1980'</p>	40.72 AC.		
LOT 4 - 40.84 AC.	40.77 AC.	40.74 AC.	40.69 AC.		

SECTION 18, TOWNSHIP 24 SOUTH, RANGE 30 EAST, N.M.P.M.,
EDDY COUNTY, NEW MEXICO.



BASS ENTERPRISES PRODUCTION CO.

REF: POKER LAKE UNIT No. 211 / Well Pad Topo

THE POKER LAKE UNIT No. 211 LOCATED 1980' FROM
THE SOUTH LINE AND 1980' FROM THE EAST LINE OF
SECTION 18, TOWNSHIP 24 SOUTH, RANGE 30 EAST,
N.M.P.M., EDDY COUNTY, NEW MEXICO.

BASIN SURVEYS P.O. BOX 1786-HOBBS, NEW MEXICO

W.O. Number: 4138

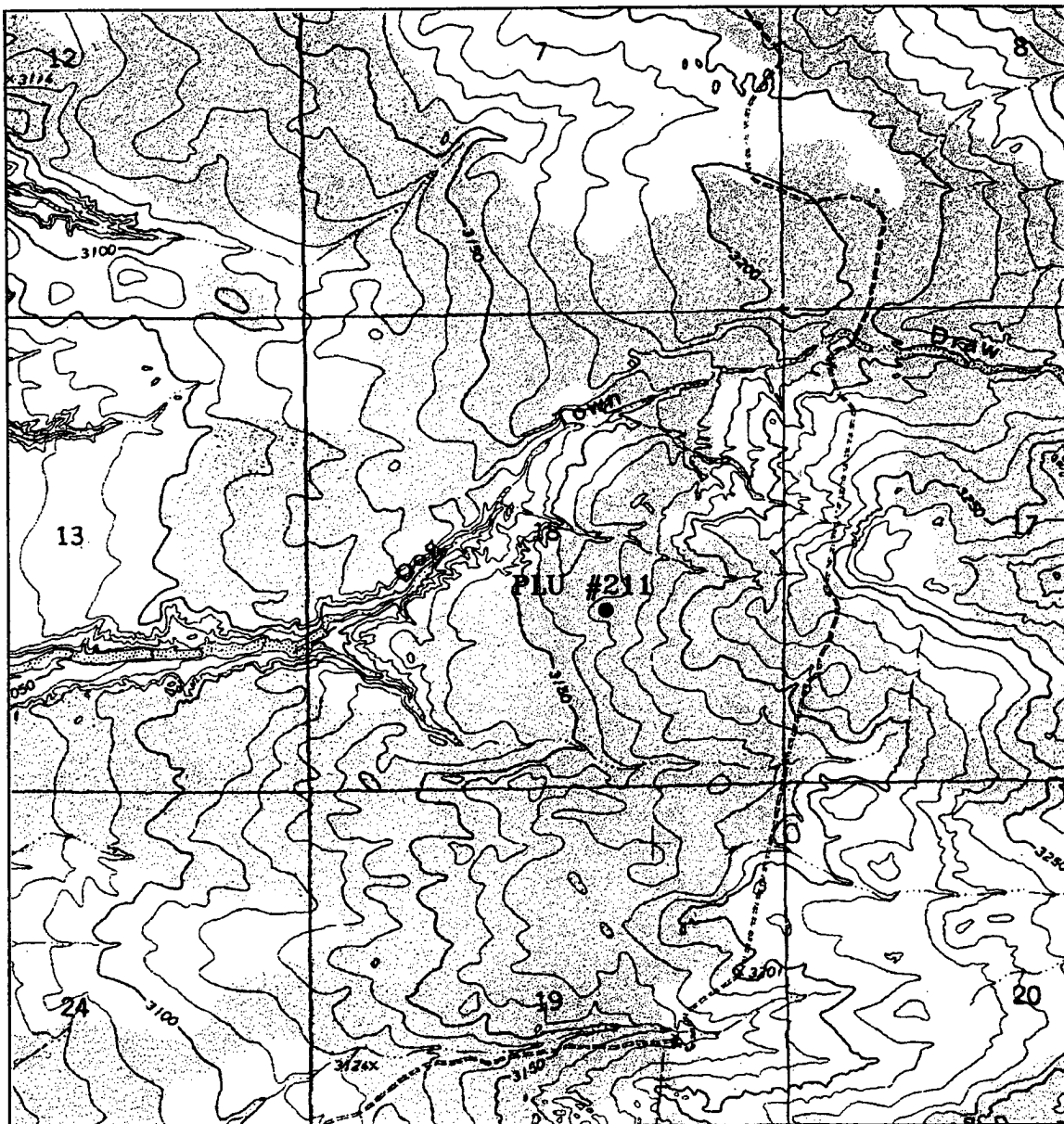
Drawn By: K. GOAD

Date: 04-23-2004

Disk: KJG CD#7 - 4138A.DWG

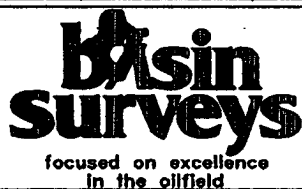
Survey Date: 04-15-2004

Sheet 1 of 1 Sheets



POKER LAKE UNIT #211

Located at 1980' FSL and 1980' FEL
 Section 18, Township 24 South, Range 30 East,
 N.M.P.M., Eddy County, New Mexico.



P.O. Box 1786
 1120 N. West County Rd.
 Hobbs, New Mexico 88241
 (505) 393-7316 - Office
 (505) 392-3074 - Fax
basinsurveys.com

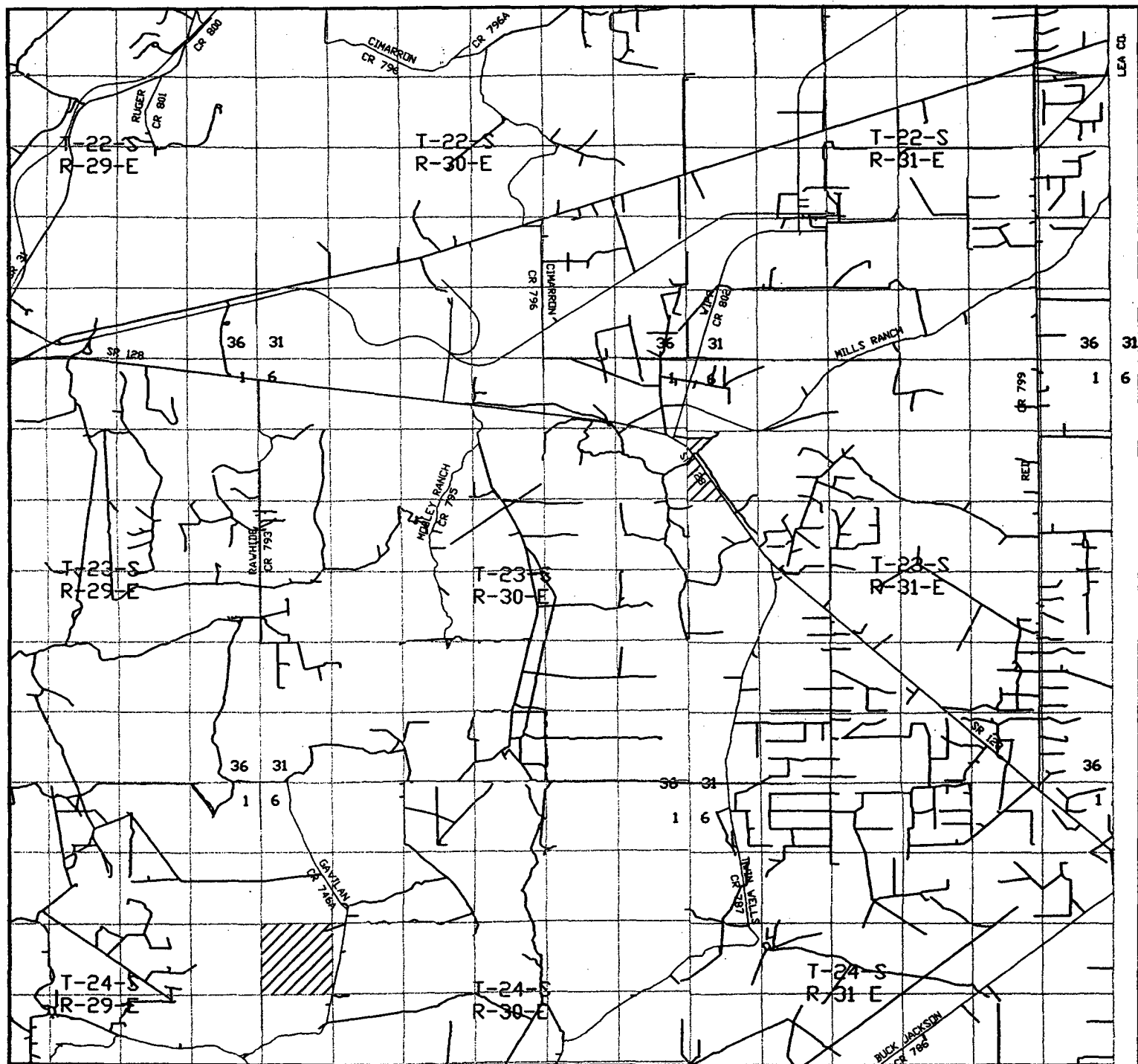
W.O. Number: 4138AA - KJG #7

Survey Date: 04-15-2004

Scale: 1" = 2000'

Date: 04-23-2004

**BASS ENTERPRISES
 PRODUCTION CO.**



POKER LAKE UNIT #211

Located at 1980' FSL and 1980' FEL
 Section 18, Township 24 South, Range 30 East,
 N.M.P.M., Eddy County, New Mexico.



focused on excellence
 in the oilfield

P.O. Box 1786
 1120 N. West County Rd.
 Hobbs, New Mexico 88241
 (505) 393-7316 - Office
 (505) 392-3074 - Fax
 basinsurveys.com

W.O. Number: 4138AA - KJG #7

Survey Date: 04-15-2004

Scale: 1" = 2 miles

Date: 04-23-2004

**BASS ENTERPRISES
 PRODUCTION CO.**