

Submit 3 Copies To Appropriate District
Office
District I
1625 N. French Dr., Hobbs, NM 88240
District II
1301 W. Grand Ave., Artesia, NM 88210
District III
1000 Rio Brazos Rd., Aztec, NM 87410
District IV
1220 S. St. Francis Dr., Santa Fe, NM
87505

State of New Mexico
Energy, Minerals and Natural Resources

Form C-103
May 27, 2004

OIL CONSERVATION DIVISION
1220 South St. Francis Dr.
Santa Fe, NM 87505

| |
|---|
| WELL API NO. 30-015-34789 |
| 5. Indicate Type of Lease STATE <input type="checkbox"/> FEE <input checked="" type="checkbox"/> |
| 6. State Oil & Gas Lease No. |
| 7. Lease Name or Unit Agreement Name Seine B 6 Fee |
| 8. Well Number 1H |
| 9. OGRID Number 7377 |
| 10. Pool name or Wildcat Cottonwood Creek; Wolfcamp (Gas) |

SUNDRY NOTICES AND REPORTS ON WELLS
(DO NOT USE THIS FORM FOR PROPOSALS TO DRILL OR TO DEEPEN OR PLUG BACK TO A
DIFFERENT RESERVOIR. USE "APPLICATION FOR PERMIT" (FORM C-101) FOR SUCH
PROPOSALS.)

1. Type of Well: Oil Well ☐ Gas Well ☒ Other

2. Name of Operator
EOG Resources, Inc.

3. Address of Operator
P.O. Box 2267 Midland, Texas 79702

4. Well Location

Unit Letter: 16: 2,910 feet from the South line and 255 feet from the East line

Section 6

Township 16S Range 25E

NMPM

County Eddy

11. Elevation (Show whether DR, RKB, RT, GR, etc.)
3521'

Pit or Below-grade Tank Application ☒ or Closure ☐

Pit type: Ground Depth to Groundwater: 425' Distance from nearest fresh water well: 425' Distance from nearest surface water: 425'

Pit Liner Thickness: 12 mil Below-Grade Tank: Volume 10,300 bbls; Construction Material: Synthetic

12. Check Appropriate Box to Indicate Nature of Notice, Report or Other Data

NOTICE OF INTENTION TO:

PERFORM REMEDIAL WORK ☐ PLUG AND ABANDON ☐
TEMPORARILY ABANDON ☐ CHANGE PLANS ☒
PULL OR ALTER CASING ☐ MULTIPLE COMPL ☐

SUBSEQUENT REPORT OF:

REMEDIAL WORK ☐ ALTERING CASING ☐
COMMENCE DRILLING OPNS. ☐ P AND A ☐
CASING/CEMENT JOB ☐

OTHER: Change surface location.

OTHER: ☐

13. Describe proposed or completed operations. (Clearly state all pertinent details, and give pertinent dates, including estimated date of starting any proposed work). SEE RULE 1103. For Multiple Completions: Attach wellbore diagram of proposed completion or recompletion.

EOG Resources, Inc. (EOG) has elected to change the surface location as described by the revised C-102 attached herewith.

**As a condition of approval a pit
closure plan must be approved
prior to the commencement of
closure operations.**

As a condition of approval if during pit
construction water is encountered or if
water seeps in pits after construction
the **OCD MUST BE CONTACTED
IMMEDIATELY!**

I hereby certify that the information above is true and complete to the best of my knowledge and belief. I further certify that any pit or below-grade tank has been/will be constructed or closed according to NMOCD guidelines ☒ a general permit ☐ or an (attached) alternative OCD-approved plan ☐.

SIGNATURE Donny G. Glanton TITLE: Agent

DATE: 6/8/2006

Type or print name: Donny G. Glanton E-mail address: donny_glanton@eogresources.com Telephone No. (432) 686-3642

For State Use Only

**BRYAN G. ARRANT
DISTRICT II GEOLOGIST**

JUN 16 2006

APPROVED BY: _____ TITLE _____ DATE _____

Conditions of Approval (if any):

District I
1625 N. French Dr., Hobbs, NM 88240
District II
1301 W. Grand Avenue, Artesia, NM 88210
District III
1000 Rio Brazos Rd., Aztec, NM 87410
District IV
1220 S. St. Francis Dr., Santa Fe, NM 87505

State of New Mexico
Energy, Minerals & Natural Resources Department
OIL CONSERVATION DIVISION
1220 South St. Francis Dr.
Santa Fe, NM 87505

Form C-402
Revised October 12, 2005
Submit to Appropriate District Office
State Lease- 4 Copies
Fee Lease- 3 Copies

☒ AMENDED REPORT

WELL LOCATION AND ACREAGE DEDICATION PLAT

| | | |
|----------------------------|--------------------------------------|--|
| API Number 30-015-34789 | Pool Code 75260 | Pool Name Cottonwood Creek; WC West (Gas) |
| Property Code 35612 | Property Name SEINE B 6 FEE | Well Number 1H |
| OGRID No. 7377 | Operator Name EOG RESOURCES, INC. | Elevation 3521' |

Surface Location

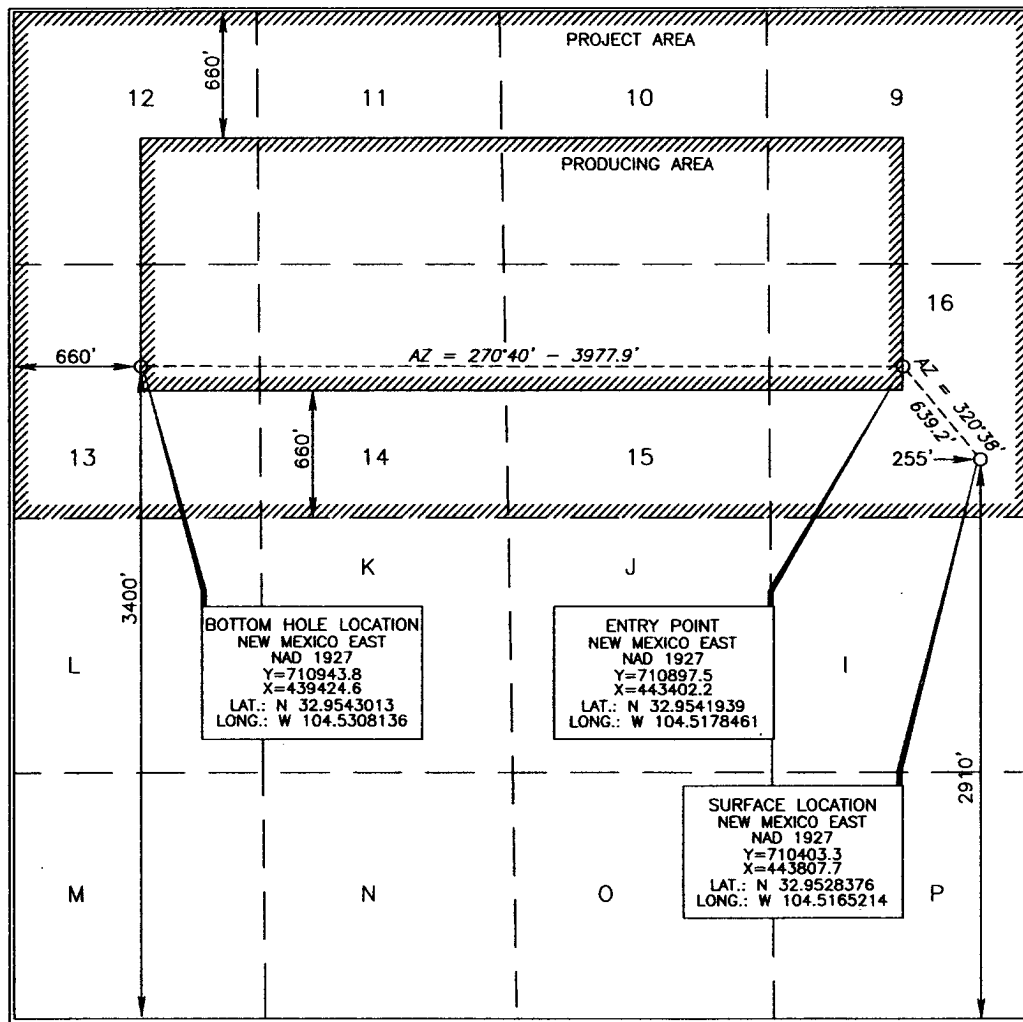
| UL or lot no. | Section | Township | Range | Lot Idn | Feet from the | North/South line | Feet from the | East/West line | County |
|---------------|---------|----------|-------------------|---------|---------------|------------------|---------------|----------------|--------|
| 16 | 6 | 16 SOUTH | 25 EAST, N.M.P.M. | | 2910 | SOUTH | 255 | EAST | EDDY |

Bottom Hole Location If Different From Surface

| UL or lot no. | Section | Township | Range | Lot Idn | Feet from the | North/South line | Feet from the | East/West line | County |
|---------------|---------|----------|-------------------|---------|---------------|------------------|---------------|----------------|--------|
| 13 | 6 | 16 SOUTH | 25 EAST, N.M.P.M. | | 3400 | SOUTH | 660 | WEST | EDDY |

| | | | |
|---------------------------|-----------------|--------------------|-----------|
| Dedicated Acres 319.52 | Joint or Infill | Consolidation Code | Order No. |
|---------------------------|-----------------|--------------------|-----------|

No allowable will be assigned to this completion until all interests have been consolidated or a non-standard unit has been approved by the division.



OPERATOR CERTIFICATION

I hereby certify that the information contained herein is true and complete to the best of my knowledge and belief, and that this organization either owns a working interest or unleased mineral interest in the land including the proposed bottom hole location or has a right to drill this well at this location pursuant to a contract with an owner of such a mineral or working interest, or to a voluntary pooling agreement or a compulsory pooling order heretofore entered by the division.

Donny G. Glanton 6/8/06
Signature Date

Donny G. Glanton
Printed Name

SURVEYOR CERTIFICATION

I hereby certify that the well location shown on this plat was plotted from field notes of actual surveys made by me or under my supervision, and that the same is true and correct to the best of my belief.

Donny G. Glanton
Date of Survey 15079
Signature and Seal of Professional Surveyor
Certificate Number 15079

WO# 060330WL-C2 (LA)

District I
1625 N. French Dr., Hobbs, NM 88240
District II
1301 W. Grand Avenue, Artesia, NM 88210
District III
1000 Rio Brazos Rd., Aztec, NM 87410
District IV
1220 S. St. Francis Dr., Santa Fe, NM 87505

State of New Mexico
Energy, Minerals & Natural Resources Department
OIL CONSERVATION DIVISION
1220 South St. Francis Dr.
Santa Fe, NM 87505

Form C-102
Revised October 12, 2005
Submit to Appropriate District Office
State Lease-4 Copies
Fee Lease-3 Copies
APR 19 2006
UUU-AMTECOM ☐ AMENDED REPORT

WELL LOCATION AND ACREAGE DEDICATION PLAT

| | | |
|----------------------------------|---|---|
| API Number 30-06534798 | Pool Code 75260 | Pool Name Cottonwood Creek; WC West (Gas) |
| Property Code 35612 | Property Name SEINE B 6 FEE | Well Number 1H |
| OGRID No. 7377 | Operator Name EOG RESOURCES, INC. | Elevation 3521' |

Surface Location

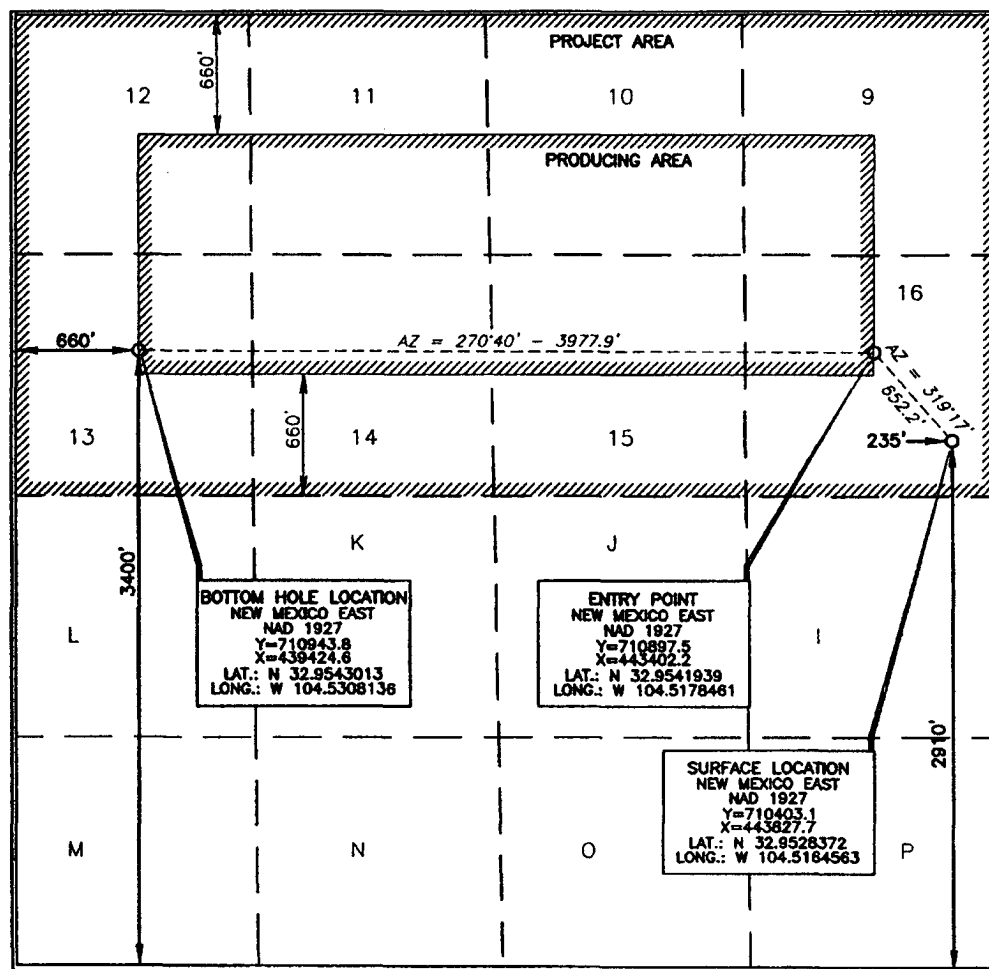
| UL or lot no. | Section | Township | Range | Lot Idn | Feet from the | North/South line | Feet from the | East/West line | County |
|---------------|---------|----------|-------------------|---------|---------------|------------------|---------------|----------------|--------|
| 16 | 6 | 16 SOUTH | 25 EAST, N.M.P.M. | | 2910 | SOUTH | 235 | EAST | EDDY |

Bottom Hole Location If Different From Surface

| UL or lot no. | Section | Township | Range | Lot Idn | Feet from the | North/South line | Feet from the | East/West line | County |
|---------------|---------|----------|-------------------|---------|---------------|------------------|---------------|----------------|--------|
| 13 | 6 | 16 SOUTH | 25 EAST, N.M.P.M. | | 3400 | SOUTH | 660 | WEST | EDDY |

| Dedicated Acres | Joint or Infill | Consolidation Code | Order No. |
|-----------------|-----------------|--------------------|-----------|
| 319.52 | | | |

No allowable will be assigned to this completion until all interests have been consolidated or a non-standard unit has been approved by the division.



OPERATOR CERTIFICATION

I hereby certify that the information contained herein is true and complete to the best of my knowledge and belief, and that this organization either owns a working interest or unleased mineral interest in the land including the proposed bottom hole location or has a right to drill this well at this location pursuant to a contract with an owner of such a mineral or working interest, or to a voluntary pooling agreement or a compulsory pooling order heretofore entered by the division.

Donny G. Glanton 4/17/06
Signature Date

Donny G. Glanton
Printed Name

SURVEYOR CERTIFICATION

I hereby certify that the well location shown on this plat was plotted from field notes of actual surveys made by me or under my supervision, and that the same is true and correct to the best of my belief.

15079
Date of Survey

Signature and Seal of Professional Surveyor

Terry J. Asel
Certificate Number 15079

WOL 060330WL-C (CDA)