

OK

DISTRICT I
1825 N. FRENCH DR., HOHES, NM 88240

State of New Mexico
Energy, Minerals and Natural Resources Department

Form C-102
Revised October 12, 2005
Submit to Appropriate District Office
State Lease - 4 Copies
Fee Lease - 3 Copies

DISTRICT II
1301 W. GRAND AVENUE, ARTESIA, NM 88210

OIL CONSERVATION DIVISION
1220 SOUTH ST. FRANCIS DR.
Santa Fe, New Mexico 87505

DISTRICT III
1000 Rio Brazos Rd., Aztec, NM 87410

DISTRICT IV
1220 S. ST. FRANCIS DR., SANTA FE, NM 87505

WELL LOCATION AND ACREAGE DEDICATION PLAT

AMENDED REPORT

API Number 30-025-38112		Pool Code 15200	Pool Name D-K Add
Property Code 26475	Property Name M & M		Well Number 5
OGRID No. 873	Operator Name APACHE CORPORATION		Elevation 3574'

Surface Location

UL or lot No.	Section	Township	Range	Lot Idn	Feet from the	North/South line	Feet from the	East/West line	County
C	24	20-S	38-E		330	NORTH	2310	WEST	LEA

Bottom Hole Location If Different From Surface

UL or lot No.	Section	Township	Range	Lot Idn	Feet from the	North/South line	Feet from the	East/West line	County

Dedicated Acres 40	Joint or Infill	Consolidation Code	Order No.
------------------------------	-----------------	--------------------	-----------

NO ALLOWABLE WILL BE ASSIGNED TO THIS COMPLETION UNTIL ALL INTERESTS HAVE BEEN CONSOLIDATED OR A NON-STANDARD UNIT HAS BEEN APPROVED BY THE DIVISION

<p style="text-align: center;">GEODEIC COORDINATES NAD 27 NME Y=571375.2 N X=879130.1 E LAT.=32.564792' N LONG.=103.102749' W</p>	<p>OPERATOR CERTIFICATION</p> <p><i>I hereby certify that the information herein is true and complete to the best of my knowledge and belief, and that this organization either owns a working interest or unleased mineral interest in the land including the proposed bottom hole location or has a right to drill this well at this location pursuant to a contract with an owner of such mineral or working interest, or to a voluntary pooling agreement or a compulsory pooling order heretofore entered by the division.</i></p> <p><i>Lana Williams 9/5/06</i> Signature Date</p> <p><u>Lana Williams</u> Printed Name</p>
	<p>SURVEYOR CERTIFICATION</p> <p><i>I hereby certify that the well location shown on this plat was plotted from field notes of actual surveys made by me or under my supervision, and that the same is true and correct to the best of my belief.</i></p> <p style="text-align: center;">JUNE 26, 2006</p> <p>Date Surveyed MR</p> <p>Signature and Seal of Professional Surveyor <i>GARY EDISON</i> <i>Lana Williams 7/7/06</i></p>
	<p>Certificate No. GARY EDISON 12641 RONALD J. EDISON 3239</p>
	<p>1206111.1035</p>

OK

DISTRICT I
1825 N. FRENCH DR., HOBBS, NM 88240

State of New Mexico
Energy, Minerals and Natural Resources Department

Form C-102

DISTRICT II
1301 W. GRAND AVENUE, ARTESIA, NM 88210

OIL CONSERVATION DIVISION
1220 SOUTH ST. FRANCIS DR.
Santa Fe, New Mexico 87505

Revised October 12, 2005
Submit to Appropriate District Office
State Lease - 4 Copies
Fee Lease - 3 Copies

DISTRICT III
1000 Rio Brazos Rd., Aztec, NM 87410

DISTRICT IV
1220 S. ST. FRANCIS DR., SANTA FE, NM 87505

WELL LOCATION AND ACREAGE DEDICATION PLAT

AMENDED REPORT

API Number 30-025-38112	Pool Code 33250	Pool Name House Drinkard
Property Code 26475	Property Name M & M	Well Number 5
OGRID No. 873	Operator Name APACHE CORPORATION	Elevation 3574'

Surface Location

UL or lot No.	Section	Township	Range	Lot Idn	Feet from the	North/South line	Feet from the	East/West line	County
C	24	20-S	38-E		330	NORTH	2310	WEST	LEA

Bottom Hole Location If Different From Surface

UL or lot No.	Section	Township	Range	Lot Idn	Feet from the	North/South line	Feet from the	East/West line	County

Dedicated Acres 40	Joint or Infill	Consolidation Code	Order No.
-----------------------	-----------------	--------------------	-----------

NO ALLOWABLE WILL BE ASSIGNED TO THIS COMPLETION UNTIL ALL INTERESTS HAVE BEEN CONSOLIDATED OR A NON-STANDARD UNIT HAS BEEN APPROVED BY THE DIVISION

	<p>GEODETIC COORDINATES NAD 27 NME</p> <p>Y=571375.2 N X=879130.1 E</p> <p>LAT.=32.564792' N LONG.=103.102749' W</p>	<p>OPERATOR CERTIFICATION</p> <p>I hereby certify that the information herein is true and complete to the best of my knowledge and belief, and that this organization either owns a working interest or unleased mineral interest in the land including the proposed bottom hole location or has a right to drill this well at this location pursuant to a contract with an owner of such mineral or working interest, or to a voluntary pooling agreement or a compulsory pooling order heretofore entered by the division.</p> <p><i>Lana Williams 9/5/06</i> Signature Date</p> <p>Lana Williams Printed Name</p>
		<p>SURVEYOR CERTIFICATION</p> <p>I hereby certify that the well location shown on this plat was plotted from field notes of actual surveys made by me or under my supervision, and that the same is true and correct to the best of my belief.</p> <p>JUNE 26, 2006 Date Surveyed MR</p>
		<p>Signature and Seal of Professional Surveyor GARY EDISON <i>Gary Edison 7/7/06</i></p>
		<p>Certificate No. GARY EDISON 12841 RONALD J. EDISON 3239</p>

OK

DISTRICT I
1025 N. FRENCH DR., HOHES, NM 80240

State of New Mexico
Energy, Minerals and Natural Resources Department

Form C-102
Revised October 12, 2005
Submit to Appropriate District Office
State Lease - 4 Copies
Fee Lease - 3 Copies

DISTRICT II
1301 W. GRAND AVENUE, ARTESIA, NM 80210

OIL CONSERVATION DIVISION
1220 SOUTH ST. FRANCIS DR.
Santa Fe, New Mexico 87505

DISTRICT III
1000 Rio Brazos Rd., Aztec, NM 87410

DISTRICT IV
1220 S. ST. FRANCIS DR., SANTA FE, NM 87505

WELL LOCATION AND ACREAGE DEDICATION PLAT

AMENDED REPORT

API Number 30-025-38112	Pool Code 87085	Pool Name Warren Tubb East
Property Code 26475	Property Name M & M	Well Number 5
OGRID No. 873	Operator Name APACHE CORPORATION	Elevation 3574'

Surface Location

UL or lot No.	Section	Township	Range	Lot Idn	Feet from the	North/South line	Feet from the	East/West line	County
C	24	20-S	38-E		330	NORTH	2310	WEST	LEA

Bottom Hole Location If Different From Surface

UL or lot No.	Section	Township	Range	Lot Idn	Feet from the	North/South line	Feet from the	East/West line	County

Dedicated Acres	Joint or Infill	Consolidation Code	Order No.
40			

NO ALLOWABLE WILL BE ASSIGNED TO THIS COMPLETION UNTIL ALL INTERESTS HAVE BEEN CONSOLIDATED OR A NON-STANDARD UNIT HAS BEEN APPROVED BY THE DIVISION

<p>GEODETIC COORDINATES NAD 27 NME Y=571375.2 N X=879130.1 E LAT.=32.564792° N LONG.=103.102749° W</p>	<p>OPERATOR CERTIFICATION</p> <p>I hereby certify that the information herein is true and complete to the best of my knowledge and belief, and that this organization either owns a working interest or unleased mineral interest in the land including the proposed bottom hole location or has a right to drill this well at this location pursuant to a contract with an owner of such mineral or working interest, or to a voluntary pooling agreement or a compulsory pooling order heretofore entered by the division.</p> <p><i>Lana Williams 9/5/06</i> Signature Date</p> <p>Lana Williams Printed Name</p>
	<p>SURVEYOR CERTIFICATION</p> <p>I hereby certify that the well location shown on this plat was plotted from field notes of actual surveys made by me or under my supervision, and that the same is true and correct to the best of my belief.</p> <p>JUNE 26, 2006</p> <p>Date Surveyed MR</p> <p>Signature & Seal of Professional Surveyor GARY EIDSON <i>Gary Eidson 7/7/06</i> 120611-1035</p> <p>Certificate No. GARY EIDSON 12641 RONALD J. EIDSON 3239</p>

OK

DISTRICT I
1625 N. FRENCH DR., HOODES, NM 88240

State of New Mexico
Energy, Minerals and Natural Resources Department

DISTRICT II
1301 W. GRAND AVENUE, ARTESIA, NM 88210

OIL CONSERVATION DIVISION
1220 SOUTH ST. FRANCIS DR.
Santa Fe, New Mexico 87505

Form C-102
Revised October 12, 2005
Submit to Appropriate District Office
State Lease - 4 Copies
Fee Lease - 3 Copies

DISTRICT III
1000 Rio Brazos Rd., Aztec, NM 87410

DISTRICT IV
1220 S. ST. FRANCIS DR., SANTA FE, NM 87505

WELL LOCATION AND ACREAGE DEDICATION PLAT

AMENDED REPORT

API Number 30-025-38112	Pool Code D6660	Pool Name Blinebry Oil & Gas (OIL)
Property Code 26475	Property Name M & M	Well Number 5
OGRID No. 873	Operator Name APACHE CORPORATION	Elevation 3574'

Surface Location

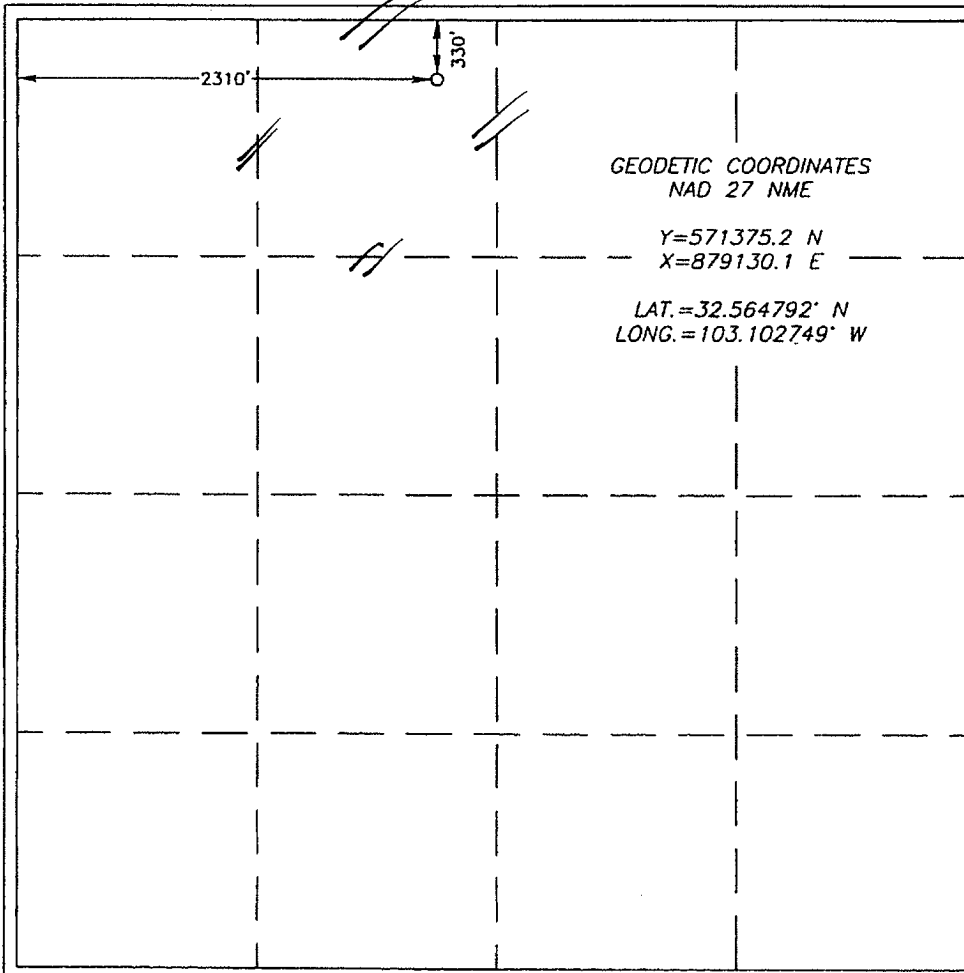
UL or lot No.	Section	Township	Range	Lot Idn	Feet from the	North/South Line	Feet from the	East/West Line	County
C	24	20-S	38-E		330	NORTH	2310	WEST	LEA

Bottom Hole Location If Different From Surface

UL or lot No.	Section	Township	Range	Lot Idn	Feet from the	North/South line	Feet from the	East/West line	County

Dedicated Acres 40	Joint or Infill	Consolidation Code	Order No.
-----------------------	-----------------	--------------------	-----------

NO ALLOWABLE WILL BE ASSIGNED TO THIS COMPLETION UNTIL ALL INTERESTS HAVE BEEN CONSOLIDATED OR A NON-STANDARD UNIT HAS BEEN APPROVED BY THE DIVISION



OPERATOR CERTIFICATION

I hereby certify that the information herein is true and complete to the best of my knowledge and belief, and that this organization either owns a working interest or unleased mineral interest in the land including the proposed bottom hole location or has a right to drill this well at this location pursuant to a contract with an owner of such mineral or working interest, or to a voluntary pooling agreement or a compulsory pooling order heretofore entered by the division.

Lana Williams 9/15/06
Signature Date

Lana Williams
Printed Name

SURVEYOR CERTIFICATION

I hereby certify that the well location shown on this plat was plotted from field notes of actual surveys made by me or under my supervision, and that the same is true and correct to the best of my belief.

JUNE 26, 2006

Date Surveyed MR

Signature & Seal of Professional Surveyor
GARY EIDSON
Ronald E. Eidsen 7/7/06

Certificate No. GARY EIDSON 12641
RONALD EIDSON 3239

ISTRICK I
25 N. FRENCH DR., HOBBS, NM 80240

ISTRICK II
01 W. GRAND AVENUE, ARTEZIA, NM 88210

ISTRICK III
100 Rio Brazos Rd., Aztec, NM 87410

ISTRICK IV
20 S. ST. FRANCIS DR., SANTA FE, NM 87505

State of New Mexico

Energy, Minerals and Natural Resources Department

OIL CONSERVATION DIVISION
1220 SOUTH ST. FRANCIS DR.
Santa Fe, New Mexico 87505

Form C-102
Revised October 12, 2005
Submit to Appropriate District Office
State Lease - 4 Copies
Fee Lease - 3 Copies

WELL LOCATION AND ACREAGE DEDICATION PLAT

AMENDED REPORT

API Number		Pool Code		Pool Name	
Property Code	Property Name M & M				Well Number 5
OGRID No.	Operator Name APACHE CORPORATION				Elevation 3574'

Surface Location

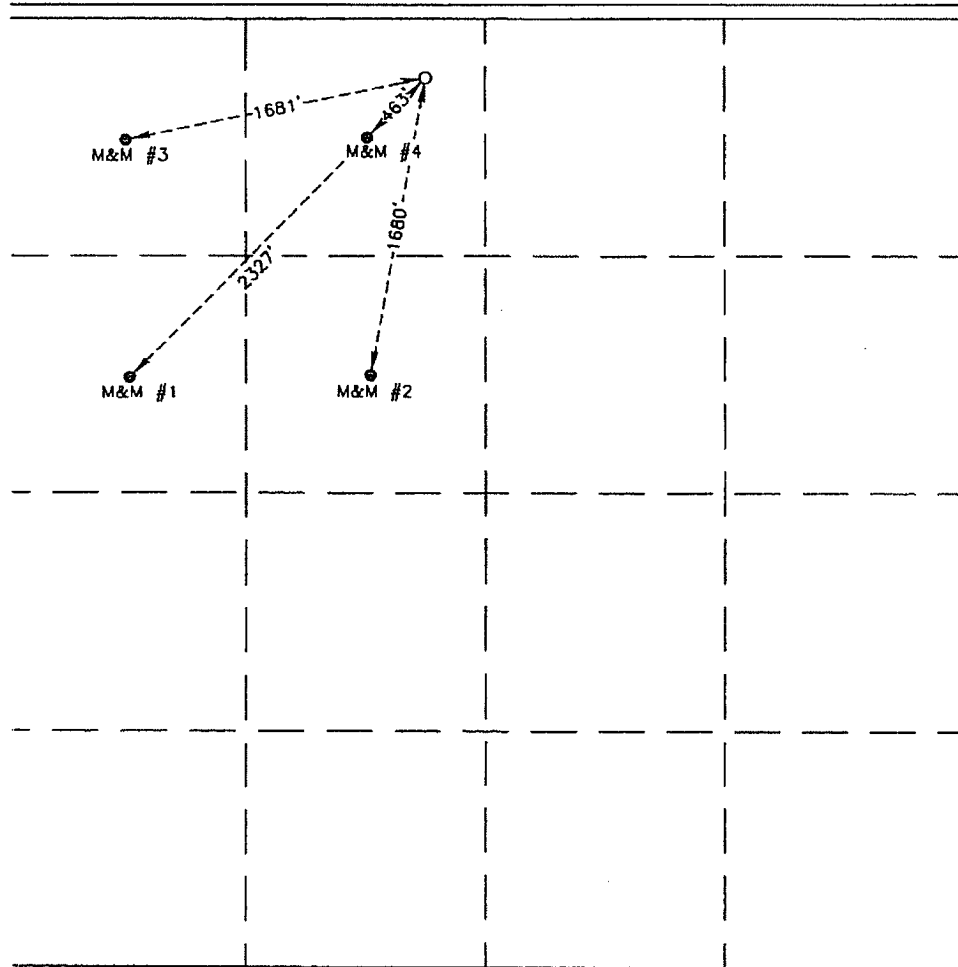
UL or lot No.	Section	Township	Range	Lot Idn	Feet from the	North/South line	Feet from the	East/West line	County
C	24	20-S	38-E		330	NORTH	2310	WEST	LEA

Bottom Hole Location If Different From Surface

UL or lot No.	Section	Township	Range	Lot Idn	Feet from the	North/South line	Feet from the	East/West line	County

Dedicated Acres	Joint or Infill	Consolidation Code	Order No.

NO ALLOWABLE WILL BE ASSIGNED TO THIS COMPLETION UNTIL ALL INTERESTS HAVE BEEN CONSOLIDATED OR A NON-STANDARD UNIT HAS BEEN APPROVED BY THE DIVISION



OPERATOR CERTIFICATION

I hereby certify that the information herein is true and complete to the best of my knowledge and belief, and that this organization either owns a working interest or unleased mineral interest in the land including the proposed bottom hole location or has a right to drill this well at this location pursuant to a contract with an owner of such mineral or working interest, or to a voluntary pooling agreement or a compulsory pooling order heretofore entered by the division.

Lana Williams 9/15/06
Signature Date
Lana Williams
Printed Name

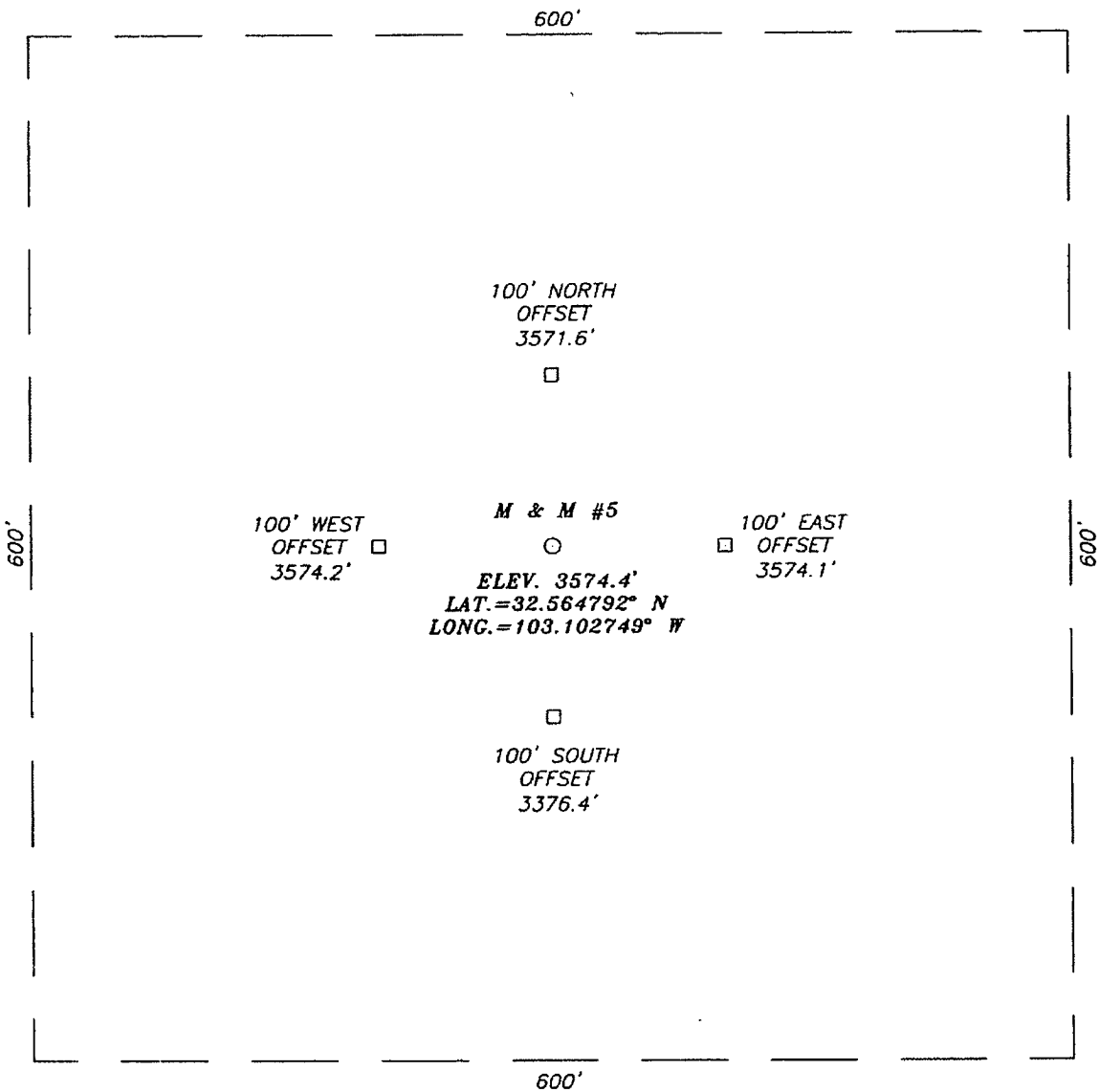
SURVEYOR CERTIFICATION

I hereby certify that the well location shown on this plat was plotted from field notes of actual surveys made by me or under my supervision, and that the same is true and correct to the best of my belief.

JUNE 26, 2006
Date Surveyed MR
Signature & Seal of Professional Surveyor

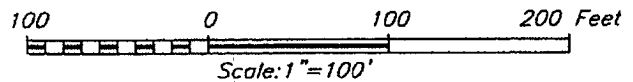
06.11.1035
Certificate No. GARY EIDSON 12841
RONALD J. EIDSON 3239

SECTION 24, TOWNSHIP 20 SOUTH, RANGE 38 EAST, N.M.P.M.,
 LEA COUNTY, NEW MEXICO



DIRECTIONS TO LOCATION

FROM THE INTERSECTION OF ST. HWY. #18 AND CO. RD. C-59 (McCASLAND RD.), GO EAST ON MCCASLAND RD. APPROX. 0.6 MILES. TURN RIGHT AND GO SOUTH APPROX. APPROX. 0.7 MILES TO A "T" INTERSECTION. TURN LEFT AND GO EAST APPROX. 0.1 MILES. TURN LEFT AND GO NORTH APPROX. 0.3 MILES. TURN RIGHT AND GO EAST APPROX. 0.2 MILES. TURN LEFT AND GO NORTH APPROX. 0.2 MILES TO EXISTING M&M #4 WELL PAD. THIS LOCATION IS APPROX. 400 FEET NORTHEAST.



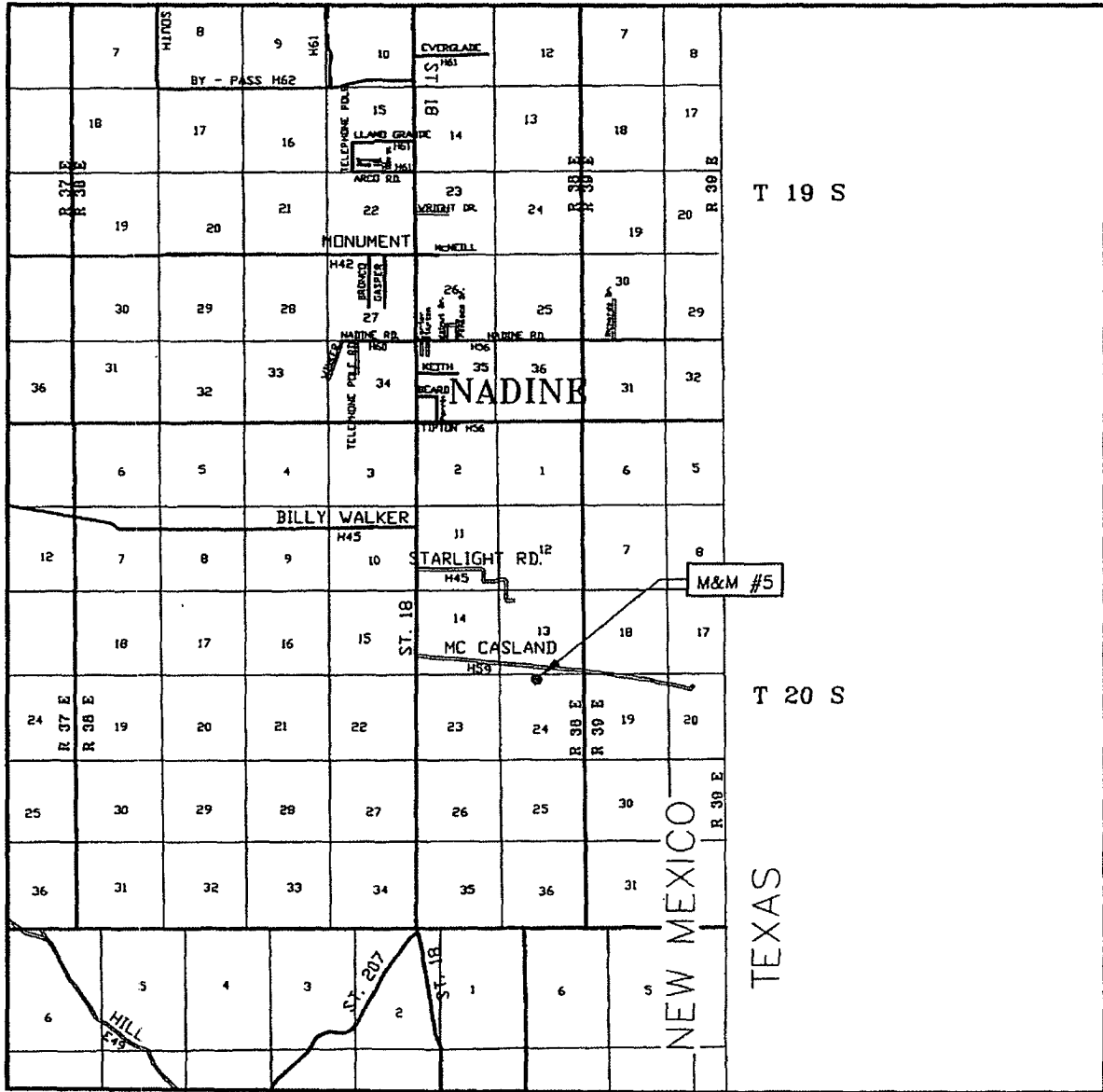
APACHE CORPORATION

M & M #5
 LOCATED 330 FEET FROM THE NORTH LINE
 AND 2310 FEET FROM THE WEST LINE OF SECTION 24,
 TOWNSHIP 20 SOUTH, RANGE 38 EAST, N.M.P.M.,
 LEA COUNTY, NEW MEXICO.

PROVIDING SURVEYING SERVICES
 SINCE 1948
JOHN WEST SURVEYING COMPANY
 412 N. DAL PASO
 HOBBS, N.M. 88240
 (505) 393-3117


Survey Date: 06/26/06	Sheet 1 of 1 Sheets
W.O. Number: 06.11.1035	Dr By: M.R.
Date: 07/05/06	Disk: CD#6
06111035	Scale: 1"=100'

VICINITY MAP



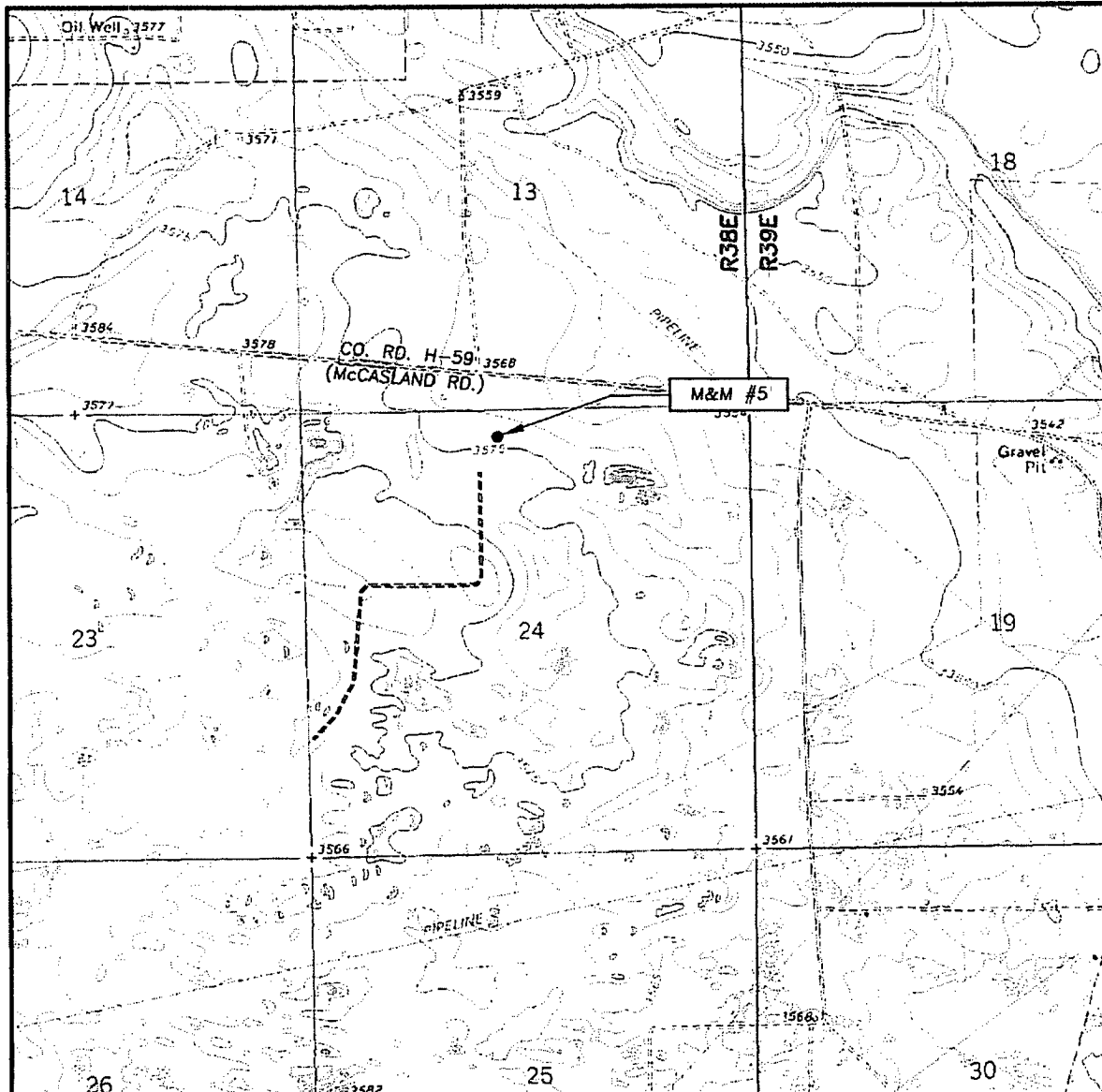
SCALE: 1" = 2 MILES

SEC. 24 TWP. 20-S RGE. 38-E
 SURVEY N.M.P.M.
 COUNTY LEA STATE NEW MEXICO
 DESCRIPTION 330' FNL & 2310' FWL
 ELEVATION 3574'
 OPERATOR APACHE CORPORATION
 LEASE M&M



PROVIDING SURVEYING SERVICES
 SINCE 1946
JOHN WEST SURVEYING COMPANY
 412 N. DAL PASO
 HOBBS, N.M. 88240
 (505) 353-3117

LOCATION VERIFICATION MAP



SCALE: 1" = 2000'

CONTOUR INTERVAL:
HOBBS SE, N.M. - 5'

SEC. 24 TWP. 20-S RGE. 38-E

SURVEY N.M.P.M.

COUNTY LEA STATE NEW MEXICO

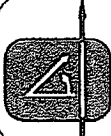
DESCRIPTION 330' FNL & 2310' FWL

ELEVATION 3574'

OPERATOR APACHE CORPORATION

LEASE M&M

U.S.G.S. TOPOGRAPHIC MAP
HOBBS SE, N.M.



PROVIDING SURVEYING SERVICES
 SINCE 1946
JOHN WEST SURVEYING COMPANY
 412 N. DAL PASO
 HOBBS, N.M. 88240
 (505) 393-3117