

District I
1625 N. French Dr., Hobbs, NM 88240

District II
1301 W. Grand Avenue, Artesia, NM 88210

District III
1000 Rio Brazos Road, Aztec, NM 87410

District IV
1220 S. St. Francis Dr., Santa Fe, NM 87505

State of New Mexico
Energy, Minerals and Natural Resources

Form C-101
May 27, 2004

Submit to appropriate District Office

☐ AMENDED REPORT

APPLICATION FOR PERMIT TO **DRILL**, RE-ENTER, DEEPEN, PLUGBACK, OR ADD A ZONE

Operator Name and Address Parallel Petroleum Corp. 1004 N. Big Spring Street, Suite 400, Midland, TX. 79701		OGRID Number 230387
Property Code 35992	Property Name Codex 1525-34	API Number 30-005-63853
Proposed Pool 1 Wildcat, Wolfcamp		Well No. 1

Surface Location

UL or lot no.	Section	Township	Range	Lot Idn	Feet from the	North/South line	Feet from the	East/West line	County
H	34	15S	25E		1750'	N	203	E	Chaves

Proposed Bottom Hole Location If Different From Surface

UL or lot no.	Section	Township	Range	Lot Idn	Feet from the	North/South line	Feet from the	East/West line	County
E	34	15S	25E		1880'	N	660'	W	Chaves

Additional Well Information

Work Type Code N	Well Type Code O & G	Cable/Rotary R	Lease Type Code P	Ground Level Elevation 3414'
Multiple No	Proposed Depth 8966MD, 4750TVD	Formation Wolfcamp	Contractor NA	Spud Date NA
Depth to Groundwater 65'		Distance from nearest fresh water well 600'		Distance from nearest surface water 6000'
Pit: Liner: Synthetic <input checked="" type="checkbox"/> 12_mils thick Clay <input type="checkbox"/> Pit Volume: 25,000 bbls Drilling Method: Fresh Water <input checked="" type="checkbox"/> Brine <input type="checkbox"/> Diesel/Oil-based <input type="checkbox"/> Gas/Air <input type="checkbox"/>				
Closed-Loop System <input type="checkbox"/>				

Proposed Casing and Cement Program

Hole Size	Casing Size	Casing weight/foot	Setting Depth	Sacks of Cement	Estimated TOC
12-1/4"	9-5/8"	36#	1400' C 1125'	325	Surface
8-3/4"	5-1/2"	17#	TVD 4750'	NA	Tie back
			MD 8966'		* To surface casing

22 Describe the proposed program. If this application is to DEEPEN or PLUG BACK, give the data on the present productive zone and proposed new productive zone. Describe the blowout prevention program, if any. Use additional sheets if necessary.

Well to be Drilled as a Horizontal Wolfcamp test. The attached drilling plan will be utilized for this test and contains details on the cement and mud programs as well as the directional information. The following is a summary of this plan.

1. Prepare surface location. Move in and rig up drilling rig, spud well and drill and set conductor. Install and test BOP's.
2. Drill 12 1/4" surface hole to a minimum depth of 1400'. Set 9 5/8" casing and cement.
3. Drill 8 3/4" production hole 5500' TD and evaluate running mud logs as well as DLL/CNL/LDT/CAL/GR to TD.
4. Set Kickoff point at 4280' and drill and advance hole to a Wolfcamp penetration point at approximately 1750' FNL and 660' FEL of the section 34 and continue drilling to BHL. (8966' MD & 4750' TVD)
5. Set 5 1/2" to TD and tie cement back to surface casing. Perforate porosity and stimulate as necessary (specific procedure to be determined).
6. Place well on test.
7. No H2S is anticipated during the drilling of this well.

23 I hereby certify that the information given above is true and complete to the best of my knowledge and belief. I further certify that the drilling pit will be constructed according to NMOC guidelines X, a general permit ☐, or an (attached) alternative OCD-approved plan ☐.

Printed name: Deane Durham

Title: Drilling Engineer

E-mail Address: ddurham@pml.com

Date: 9-1-06

Phone: 432-684-3727

OIL CONSERVATION DIVISION

Approved by:

BRYAN G. ARRANT
DISTRICT II GEOLOGIST

Approval Date: SEP 07 2006

Expiration Date: SEP 07 2007

Conditions of Approval Attached ☐

DISTRICT I
1625 N. French Dr., Hobbs, NM 88240

DISTRICT II
1301 W. Grand Avenue, Artesia, NM 88210

DISTRICT III
1000 Rio Brazos Rd., Aztec, NM 87410

DISTRICT IV
1220 S. St. Francis Dr., Santa Fe, NM 87505

State of New Mexico
Energy, Minerals & Natural Resources Department

OIL CONSERVATION DIVISION
1220 South St. Frances Dr.
Santa Fe, NM 87505

Form C-102
Revised October 12, 2005
Submit to Appropriate District Office
State Lease - 4 Copies
Fee Lease - 3 Copies

☐ AMENDED REPORT

WELL LOCATION AND ACREAGE DEDICATION PLAT

API Number	Pool Code 96086	Pool Name Wildcat; Wolfcamp
Property Code	Property Name CODEX 1525-34	Well Number 1
OGRID No.	Operator Name PARALLEL PETROLEUM CORPORATION	Elevation 3414'

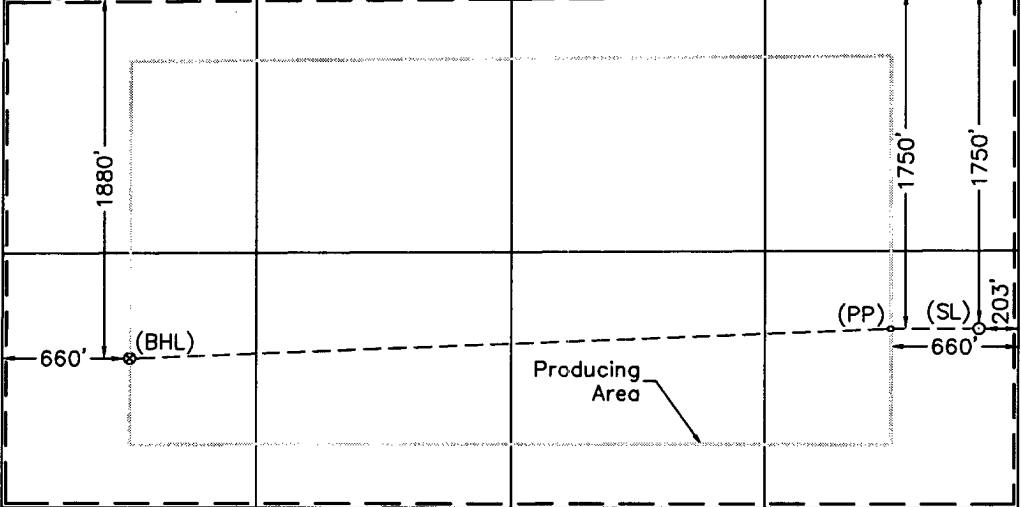
Surface Location

UL or lot No.	Section	Township	Range	Lot Idn	Feet from the	North/South line	Feet from the	East/West line	County
H	34	15 S	25 E		1750	NORTH	203	EAST	CHAVES

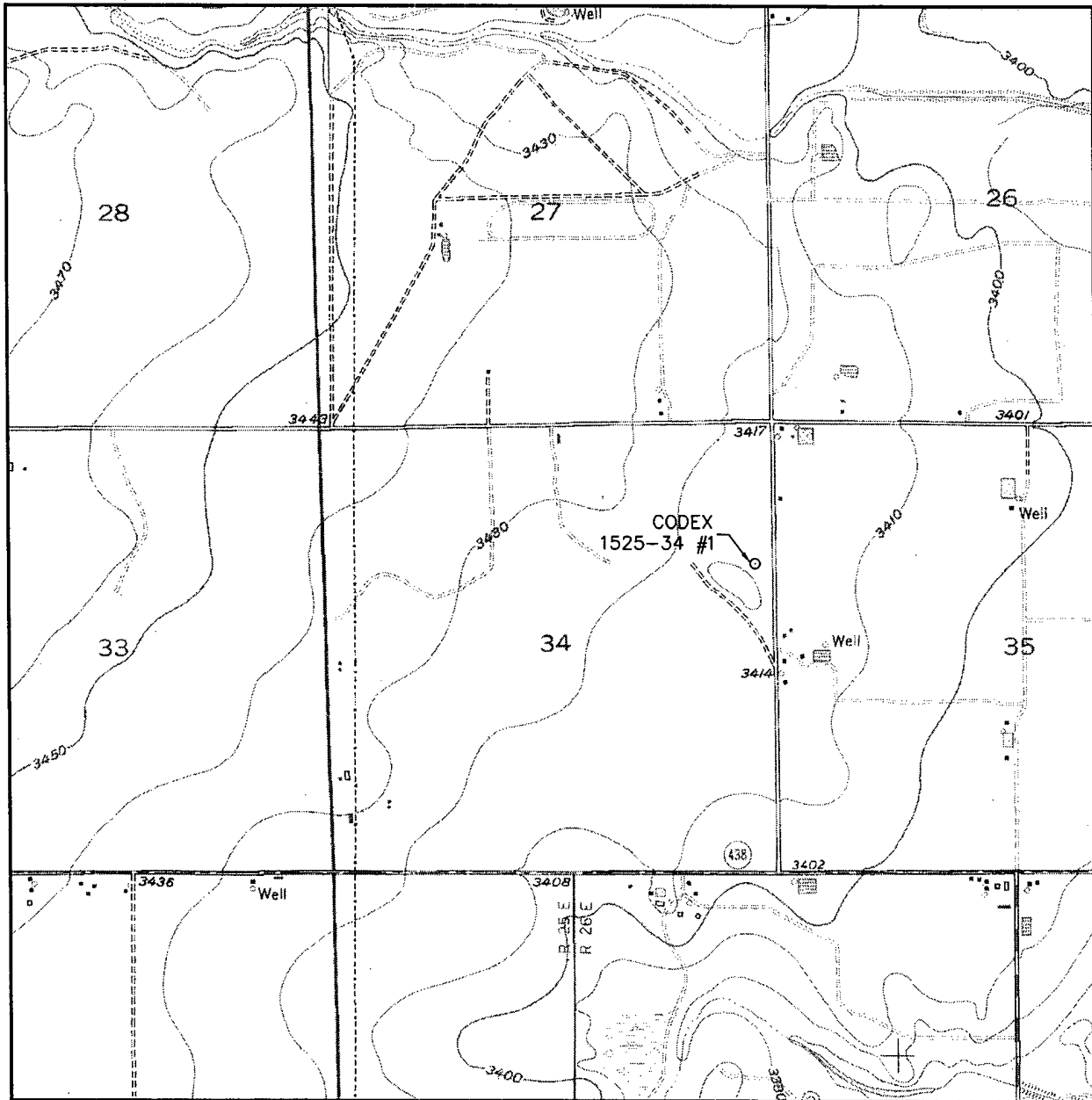
Bottom Hole Location If Different From Surface

UL or lot No.	Section	Township	Range	Lot Idn	Feet from the	North/South line	Feet from the	East/West line	County
E	34	15 S	25 E		1880	NORTH	660	WEST	CHAVES
Dedicated Acres 320	Joint or Infill	Consolidation Code	Order No.						

NO ALLOWABLE WILL BE ASSIGNED TO THIS COMPLETION UNTIL ALL INTERESTS HAVE BEEN CONSOLIDATED OR A NON-STANDARD UNIT HAS BEEN APPROVED BY THE DIVISION

	<p>OPERATOR CERTIFICATION</p> <p>I hereby certify the information contained herein is true and complete to the best of my knowledge and belief, and that this organization either owns a working interest or unleased mineral interest in the land including the proposed bottom hole location or has a right to drill this well at this location pursuant to a contract with an owner of such a mineral or working interest, or to a voluntary pooling agreement or a compulsory pooling order heretofore entered by the division.</p> <p><i>Deane Durham</i> 9-1-06 Signature Date Deane Durham Printed Name</p>														
<table border="1"><caption>Coordinate Table</caption><thead><tr><th>Description</th><th>Plane Coordinate</th></tr></thead><tbody><tr><td>Codex 1525-34 #1</td><td>X = 472,768.1</td></tr><tr><td>Surface Location</td><td>Y = 718,183.9</td></tr><tr><td>Codex 1525-34 #1</td><td>X = 472,311.3</td></tr><tr><td>Penetration Point</td><td>Y = 718,176.4</td></tr><tr><td>Codex 1525-34 #1</td><td>X = 468,349.2</td></tr><tr><td>Bottom Hole Location</td><td>Y = 717,978.3</td></tr></tbody></table>	Description	Plane Coordinate	Codex 1525-34 #1	X = 472,768.1	Surface Location	Y = 718,183.9	Codex 1525-34 #1	X = 472,311.3	Penetration Point	Y = 718,176.4	Codex 1525-34 #1	X = 468,349.2	Bottom Hole Location	Y = 717,978.3	<p>SURVEYOR CERTIFICATION</p> <p>I hereby certify that the well location shown on this plat was plotted from field notes of actual surveys made by me or under my supervision and that the same is true and correct to the best of my belief.</p> <p>August 21, 2006 Date of Survey Signature & Seal of Professional Surveyor <i>[Signature]</i> W.O. Num. 2006-0879 Certificate No. MACON McDONALD 12185</p>
Description	Plane Coordinate														
Codex 1525-34 #1	X = 472,768.1														
Surface Location	Y = 718,183.9														
Codex 1525-34 #1	X = 472,311.3														
Penetration Point	Y = 718,176.4														
Codex 1525-34 #1	X = 468,349.2														
Bottom Hole Location	Y = 717,978.3														
<p>NOTE:</p> <p>1) Plane Coordinates shown hereon are Transverse Mercator Grid and Conform to the "New Mexico Coordinate System", New Mexico East Zone, North American Datum of 1927. Distances shown hereon are mean horizontal surface values.</p>	<p>T-15-S</p>														

LOCATION VERIFICATION MAP



SCALE: 1" = 2000'

CONTOUR INTERVAL:
ESPUELA - 10'

SEC. 34 TWP. 15-S RGE. 25-E

SURVEY N.M.P.M.

COUNTY CHAVES

DESCRIPTION 1750' FNL & 203' FEL

ELEVATION 3414'

OPERATOR PARALLEL PETROLEUM CORPORATION

LEASE CODEX 1525-34

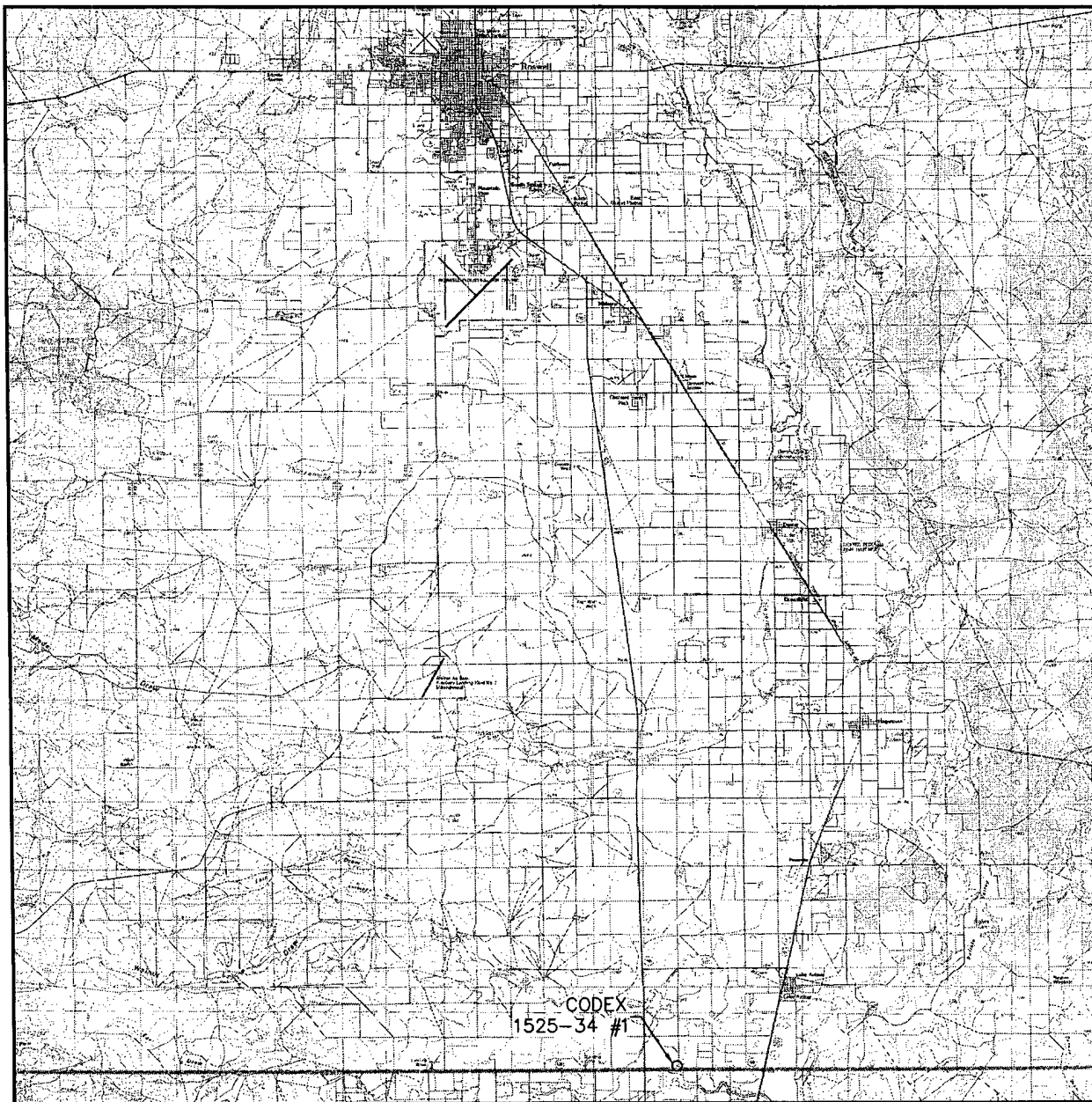
U.S.G.S. TOPOGRAPHIC MAP
ESPUELA



**WEST
COMPANY**
of Midland, Inc.

110 W. LOUISIANA, STE. 110
MIDLAND TEXAS, 79701
(432) 687-0865 - (432) 687-0868 FAX

VICINITY MAP



SCALE: 1" = 5 MILES

SEC. 34 TWP. 15-S RGE. 25-E

SURVEY N.M.P.M.

COUNTY CHAVES

DESCRIPTION 1750' FNL & 203' FEL

ELEVATION 3414'

OPERATOR PARALLEL PETROLEUM CORPORATION

LEASE CODEX 1525-34



110 W. LOUISIANA, STE. 110
MIDLAND TEXAS, 79701
(432) 687-0865 - (432) 687-0868 FAX

PARALLEL PETROLEUM CORPORATION
CODEX 1525-34 #1
SL: 203' FEL AND 1750' FNL, BHL: 660' FWL AND 1880' FNL
SEC 34, T15S, R25E SEC 34, T15S, R25E
CHAVES COUNTY, NEW MEXICO

Objective

Drill a vertical well through the Wolfcamp pay. Log and evaluate for a sidetrack to horizontal in the Wolfcamp.

Expected Geologic Tops

Est GL from topo: 3414', KB 3426'.
Glorieta 2050'
Tubb 3050'
Abo Shale 3800'
Wolfcamp 4750'
Wolfcamp Shale 4925'

Well Geometry

- 9 5/8" casing at 1400'
- Set kick-off plug for horizontal through the zone of interest
- 5 1/2" casing through the horizontal Wolfcamp; Cement per completion.

Casing Program

<u>Hole</u>	<u>MD</u> <u>(ft)</u>	<u>Casing</u>	<u>Weight</u>	<u>Grade</u>	<u>Coupling</u>	<u>COMMENT</u>
12-1/4"	0 – 1400 // 25'	9-5/8"	36	J55	LT&C	
8-3/4"	0 – TD'	5-1/2"	17	N80	LT&C	Run through the horizontal lateral.

Casing Cementing Program

9-5/8" slurry: Lead: 125 sacks (50:50) Poz (Fly Ash): Class C + 5% bwow Sodium Chloride + 10% bwoc Bentonite + 151.7% fresh water. Tail: 200 sacks Class C + 1% bwoc Calcium Chloride + 56.3% fresh water

Note: If cement does not circulate to surface, notify OCD. A temperature survey will be required. Top out to surface with 1" pipe in the annulus.

Note: 5-1/2" Cement per completion procedure. Top of Cement should tie into surface casing.

Mud Program

<u>Depth</u>	<u>Hole</u>	<u>MW</u>	<u>Visc.</u>	<u>WL</u>	<u>Synopsis</u>
0 - 1400 1125'	12-1/4"	8.4 – 8.6	28 - 29	No control	FRESH WATER mud only to 1200 ft. Severe loss potential. Circulate inner reserve. LCM: paper, fiber, cotton seed hulls.
1400 – 3700	8-3/4"	8.6 – 9.2	28 -29	No control	Cut brine. Start w/existing & add brine t/80K-120K chlorides
3700 – TD	8-3/4"	8.9 – 9.5	38 - 45	6 - 10	XCD/Starch polymer as req'd for hole cleaning. Lubricants.
KOP – TD Horizontal	8-3/4" & 7-7/8"	8.9 – 9.5	38 - 45	6 - 10	XCD/Starch polymer as req'd for hole cleaning. Lubricants.

PARALLEL SURVEY CALCULATION PROGRAM PETROLEUM CORPORATION

OPERATOR:	Parallel Petroleum Corporation	Supervisors:	
WELL:	Codex 1525-34 #1		
LOCATION:	Sec. 34 T-15-S R-25-E		
API NUMBER:			
COMMENTS:			
		MAG DEC. (-/+)	
		GRID CORR. (-/+)	
		TOTAL CORR. (-/+)	0.0
DATE: 08/30/06		TIME: 10:28 AM	TRUE TO GRID <input type="checkbox"/>

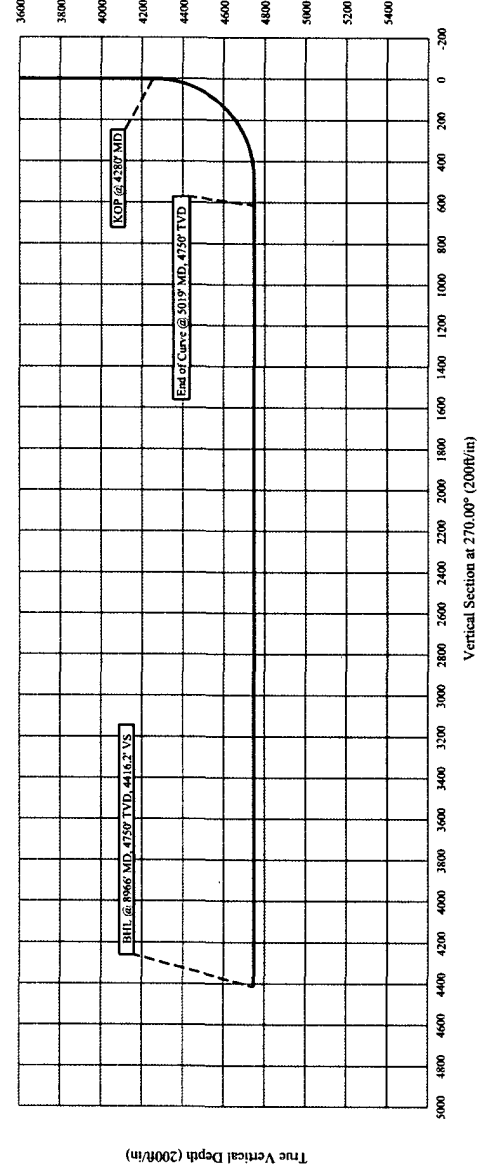
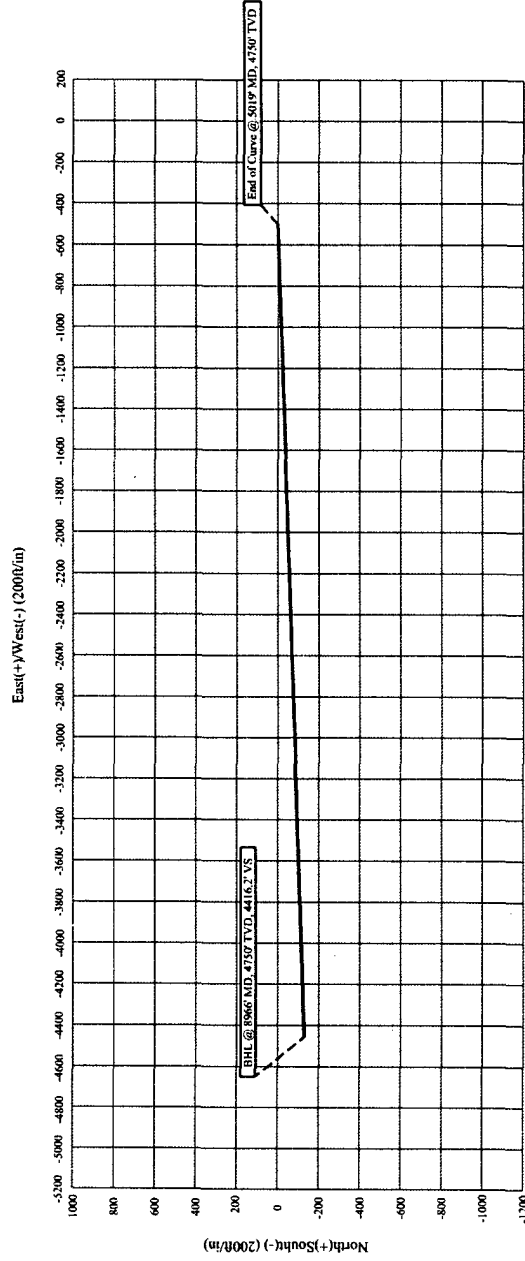
MINIMUM CURVATURE CALCULATIONS(SPE-3362)									PROPOSED DIRECTION 270.0		TARGET TRACKING TO CENTER	
SVY	MD	INC	GRID	TVD	VERT	N-S	E-W	DLS/	100		ABOVE(+)	RIGHT(+)
NUM			AZM		SECT						BELOW(-)	LEFT(-)
TIE	0	0.0	0.0	0.0	0.0	0.0	0.0					
1	4280	0.0	0.0	4280.0	0.0	0.0	0.0	0.0			470.0	0.0
2	4290	1.3	270.0	4290.0	0.1	0.0	-0.1	13.0			460.0	0.0
3	4300	2.6	270.0	4300.0	0.5	0.0	-0.5	13.0			450.0	0.0
4	5019	90.0	270.0	4750.0	471.3	0.0	-471.3	12.2			0.0	0.0
5	5050	90.0	271.9	4750.0	502.3	0.5	-502.3	6.1			0.0	0.5
6	8966	90.0	271.9	4750.0	4416.2	129.0	-4416.2	0.0			0.0	129.0

KOP @ 4280' MD
 BUR = 12.2 DEG per 100 FT
 End Curve @ 5019' MD, 4750' TVD
 BHL @ 8966' MD, 4750' TVD, 4416.2' VS

Parallel Petroleum Corp.

Codex 1525-34 #1
Sec. 34, T-15-S, R-25-E
Chaves County, New Mexico

COMPANY DETAILS
Parallel Petroleum Corp.
1004 N. Big Spring, Ste 400
Midland, Texas 79701





PARALLEL

Petroleum Corporation

1004 North Big Spring, Suite 400 • Midland, TX 79701 • Ph: 432-684-3727 • Fax: 432-685-6580

August 24, 2006

New Mexico Oil conservation Division
1301 W. Grand Ave.
Artesia, New Mexico 88210

Re: Hydrogen Sulfide Potential
Hagerman Area Wolfcamp Program
Chavez County, New Mexico

Gentlemen:

Parallel Petroleum Corporation operates the Seabiscuit #1 and the Seabiscuit #2 wells located in Section 33, T-14-S, R-26-E and the Dash for Cash #1 in Section 4, T-15-S, R-26-E. These wells were tested in the Wolfcamp formation and did not have any indications of hydrogen sulfide from this formation. Please see the gas analysis attached to this letter. We believe the potential for H₂S on locations in this area are negligible.

Should you need any additional information regarding this issue, please contact me at the address or phone number listed above.

Sincerely,

Deane Durham
Drilling Engineer

Wildcat Measurement Service
P.O. Box 1836
Artesia, New Mexico 88211-1836
TollFree #888-421-9453
Office #505-746-3481
"Quality and Service is our First Concern"

PDS 06/25/00

Run No. 260728-01
Date Run 07/28/2006
Date Sampled 07/27/2006

Analysis for: PARALLEL PETROLEUM CORPORATION

GPANGL.L62

Well Name: DASH FOR CASH #1
Field:
Sta. Number:
Purpose: SPOT
Sampling Temp: 60 DEG F
Volume/day:
Pressure on Cylinder: 733 PSIG

Producer: PARALLEL PETROLEUM CORP.
County: CHAVES State: NM
Sampled By: DON NORMAN
Atmos Temp: 91 DEG F
Formation:
Line Pressure: 746.2 PSIA

GAS COMPONENT ANALYSIS

Pressure Base: 14.7300

	Mol %	GPM
Carbon Dioxide CO2	5.6514	
Nitrogen N2	1.8667	
Hydrogen Sulfide H2S	0.0000	
Methane C1	80.6277	
Ethane C2	6.7430	1.8023
Propane C3	3.0262	0.8332
Iso-Butane IC4	0.4434	0.1450
Nor-Butane NC4	0.8870	0.2796
Iso-Pentane IC5	0.2361	0.0864
Nor-Pentane NC5	0.2341	0.0848
Hexanes Plus C6+	0.2844	0.1241
TOTAL	100.0000	3.3555

Real BTU Dry: 1092.27
Real BTU Wet: 1073.26
Real Calc. Specific Gravity: 0.7159
Field Specific Gravity: 0.0000

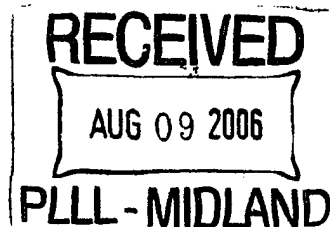
Standard Pressure: 14.6960
BTU Dry: 1086.59
BTU Wet: 1067.68

Z Factor: 0.9971
N Value: 1.2913
Avg Mol Weight: 20.6848
Avg CuFt/Gal: 56.8397
26 Lb Product: 0.4422
Methane+ GPM: 17.0215
Ethane+ GPM: 3.3555
Propane+ GPM: 1.5531
Butane+ GPM: 0.7199
Pentane+ GPM: 0.2953

REMARKS:
H2S IN GAS STREAM: NONE DETECTED

Approved by: DON NORMAN

Fri Jul 28 15:04:04 2006



Wildcat Measurement Service
P.O. Box 1836
Artesia, New Mexico 88211-1836
TollFree #888-421-9453
Office #505-746-3481
"Quality and Service is our First Concern"

PDS 06/25/00

Run No. 260728-02
Date Run 07/28/2006
Date Sampled 07/27/2006

Analysis for: PARALLEL PETROLEUM CORPORATION

GPANGL L62

Well Name: SEABISCUIT #2

Field:

Producer: PARALLEL PETROLEUM CORP.

Sta. Number:

County: CHAVES

State: NM

Purpose: SPOT

Sampled By: DON NORMAN

Sampling Temp: 60 DEG F

Atmos Temp: 90 DEG F

Volume/day:

Formation:

Pressure on Cylinder: 576 PSIG

Line Pressure: 589.2 PSIA

GAS COMPONENT ANALYSIS

Pressure Base: 14.7300

	Mol %	GPM
Carbon Dioxide CO2	3.8765	
Nitrogen N2	1.1954	
Hydrogen Sulfide H2S	0.0000	
Methane C1	84.4558	
Ethane C2	6.1856	1.6534
Propane C3	2.4877	0.6850
Iso-Butane IC4	0.3548	0.1161
Nor-Butane NC4	0.7054	0.2224
Iso-Pentane IC5	0.1941	0.0710
Nor-Pentane NC5	0.1929	0.0699
Hexanes Plus C6+	0.3518	0.1535
TOTAL	100.0000	2.9711

Real BTU Dry: 1098.66
Real BTU Wet: 1079.53
Real Calc. Specific Gravity: 0.6842
Field Specific Gravity: 0.0000

Standard Pressure: 14.6960
BTU Dry: 1093.16
BTU Wet: 1074.14

Z Factor: 0.9973
N Value: 1.2930
Avg Mol Weight: 19.7705
Avg CuFt/Gal: 56.9423
26 Lb Product: 0.4521
Methane+ GPM: 17.2860
Ethane+ GPM: 2.9711
Propane+ GPM: 1.3178
Butane+ GPM: 0.6328
Pentane+ GPM: 0.2944

REMARKS:
H2S IN GAS STREAM: NONE DETECTED

Approved by: DON NORMAN

Fri Jul 28 15:04:04 2006

RECEIVED
AUG 09 2006
PLLL - MIDLAND



PARALLEL
PETROLEUM CORPORATION

Legals:

Codex 1525-34

Well #1

1750' FNL & 203' FEL

Section 34

Township 15 South, Range 25 East, N.M.Y.M. Survey

Chaves County, New Mexico

H2S

“Contingency Plan”

CALLAWAY SAFETY EQUIPMENT CO. INC.
1020 W. Hwy. 80 East 3229 Industrial Drive
Odessa, Texas 79765 Hobbs, New Mexico 88240
(432) 561-5049 (877) 422-6345 (505) 392-2973

TABLE OF CONTENTS

I. H2S Contingency Plan

- A. Scope
- B. Objective
- C. Discussion of Plan

II. Emergency Procedures

- A. Emergency Procedures
- B. Emergency Reaction Steps
- C. Simulated Blowout Control Drills

III. Ignition Procedures

- A. Responsibility
- B. Instructions

IV. Training Requirements

V. Emergency Equipment

VI. Check Lists

- A. Status Check List
- B. Procedural Check List

VII. Briefing Procedures

VIII. Evacuation Plan

- A. General Plan
- B. Emergency Phone Lists

IX. Maps and Plats

- A. Location Plat
- B. Map to Location
- C. Radius of Exposure

X. General Information

- A. Drilling/Re-entry Permits
- B. H-9 Permit

- C. H₂S Permissible Limits
- D. Toxicity Table
- E. Physical Properties
- F. Respirator Use
- G. Emergency Rescue

H₂S CONTINGENCY PLAN SECTION

Scope:

This contingency plan provides an organized plan of action for alerting and protecting the public within an area of exposure prior to an intentional release, or following the accidental release of a potentially hazardous volume of hydrogen sulfide. The plan establishes guidelines for all personnel whose work activity may involve exposure to Hydrogen Sulfide Gas (H₂S).

Objective:

Prevent any and all accidents, and prevent the uncontrolled release of H₂S into the atmosphere.

Provide proper evacuation procedures to cope with emergencies.

Provide immediate and adequate medical attention should an injury occur.

Discussion of Plan:

Suspected Problem Zones:

Implementation: This plan, with all details, is to be fully implemented 1000' before drilling into the first sour zone.

Emergency Response Procedure: This section outlines the conditions and denotes steps to be taken in the event of an emergency.

Emergency Equipment and Procedure: This section outlines the safety and emergency equipment that will be required for the drilling of this well.

Training Provisions: This section outlines the training provisions that must be adhered to 1000' before drilling into the first sour zone.

Emergency call lists: Included are the telephone numbers of all persons that would need to be contacted, should an H₂S emergency occur.

Briefing: This section deals with the briefing of all persons involved with the drilling of this well.

Public Safety: Public Safety Personnel will be made aware of the drilling of this well.

Check Lists: Status check lists and procedural check lists have been included to ensure adherence to the plan.

General Information: A general information section has been included to supply support information.

EMERGENCY PROCEDURES SECTION

- I. In the event of any evidence of H₂S level above 10 ppm, take the following steps immediately:
 - A. Secure breathing apparatus.
 - B. Order non-essential personnel out of the danger zone.
 - C. Take steps to determine if the H₂S level can be corrected or suppressed, and if so, proceed with normal operations.
- II. If uncontrollable conditions occur, proceed with the following:
 - A. Take steps to protect and/or remove any public downwind of the rig, including partial evacuation or isolation. Notify necessary public safety personnel and the New Mexico Oil Conservation Division.
 - B. Remove all personnel to the Safe Briefing Area.
 - C. Notify public safety personnel for help with maintaining roadblocks and implementing evacuation.
 - D. Determine and proceed with the best possible plan to regain control of the well. Maintain tight security and safety measures.
- III. Responsibility:
 - A. The Company Approved Supervisor shall be responsible for the total implementation of the plan.
 - B. The Company Approved Supervisor shall be in complete command during any emergency.
 - C. The Company Approved Supervisor shall designate a back up Supervisor in the event that he/she is not available.

EMERGENCY PROCEDURE IMPLEMENTATION

I. Drilling or Tripping

A. All Personnel

1. When alarm sounds, don escape unit and report to upwind Safe Briefing Area.
2. Check status of other personnel (buddy system).
3. Secure breathing apparatus.
4. Wait for orders from supervisor.

B. Drilling Foreman

1. Report to the upwind Safe Briefing Area.
2. Don Breathing Apparatus and return to the point of release with the Tool Pusher or Driller (buddy system).
3. Determine the concentration of H₂S.
4. Assess the situation and take appropriate control measures.

C. Tool Pusher

1. Report to the upwind Safe Briefing Area.
2. Don breathing apparatus and return to the point of release with the Drilling Foreman or the Driller (buddy system).
3. Determine the concentration.
4. Assess the situation and take appropriate control measures.

D. Driller

1. Check the status of other personnel (in a rescue attempt, always use the buddy system).
2. Assign the least essential person to notify the Drilling Foreman and Tool Pusher, in the event of their absence.

3. Assume the responsibility of the Drilling Foreman and the Tool Pusher until they arrive, in the event of their absence.

E. Derrick Man and Floor Hands

1. Remain in the upwind Safe Briefing Area until otherwise instructed by a supervisor.

F. Mud Engineer

1. Report to the upwind Safe Briefing Area.
2. When instructed, begin check of mud for pH level and H₂S level.

G. Safety Personnel

1. Don Breathing Apparatus.
2. Check status of all personnel.
3. Wait for instructions from Drilling Foreman or Tool Pusher.

II. Taking a Kick

- A. All personnel report to the upwind Safe Briefing Area.
- B. Follow standard BOP procedures.

III. Open Hole Logging

- A. All unnecessary personnel should leave the rig floor.
- B. Drilling Foreman and Safety Personnel should monitor the conditions and make necessary safety equipment recommendations.

IV. Running Casing or Plugging

- A. Follow "Drilling or Tripping" procedures.
- B. Assure that all personnel have access to protective equipment.

SIMULATED BLOWOUT CONTROL DRILLS

All drills will be initiated by activating alarm devices (air horn). One long blast, on the air horn, for ACTUAL and SIMULATED Blowout Control Drills. This operation will be performed by the Drilling Foreman or Tool Pusher at least one time per week for each of the following conditions, with each crew:

Drill # 1 Bottom Drilling

Drill # 2 Tripping Drill Pipe

In each of these drills, the initial reaction time to shutting in the well shall be timed as well as the total time for the crew to complete its entire pit drill assignment. The times must be recorded on the IADC Driller's Log as "Blowout Control Drill".

Drill No.:

Reaction Time to Shut-In: minutes, seconds.

Total Time to Complete Assignment: minutes, seconds.

I. Drill Overviews

A. Drill No. 1- Bottom Drilling

1. Sound the alarm immediately.
2. Stop the rotary and hoist kelly joint above the rotary table.
3. Stop the circulatory pump.
4. Close the drill pipe rams.
5. Record casing and drill pipe shut-in pressures and pit volume increases.

B. Drill No. 2 – Tripping Drill Pipe

1. Sound the alarm immediately.
2. Position the upper tool joint just above the rotary table and set the slips.

3. Install a full opening valve or inside blowout preventor tool in order to close the drill pipe.
4. Close the drill pipe rams.
5. Record the shut-in annular pressure.

II. Crew Assignments

A. Drill No. 1 – Bottom Drilling

1. Driller

- a) Stop the rotary and hoist kelly joint above the rotary table.
- b) Stop the circulatory pump.
- c) Check flow.
- d) If flowing, sound the alarm immediately.
- e) Record the shut-in drill pipe pressure.
- f) Determine the mud weight increase needed or other courses of action.

2. Derrickman

- a) Open choke line valve at BOP.
- b) Signal Floor Man # 1 at accumulator that choke line is open.
- c) Close choke and upstream valve after pipe rams have been closed.
- d) Read the shut-in annular pressure and report readings to Driller.

3. Floor Man # 1

- a) Close the pipe rams after receiving the signal from the Derrickman.
- b) Report to Driller for further instructions.

4. Floor Man # 2

- a) Notify the Tool Pusher and Operator Representative of the H₂S alarms.
- b) Check for open fires and, if safe to do so, extinguish them.
- c) Stop all welding operations.
- d) Turn-off all non-explosion proof lights and instruments.
- e) Report to Driller for further instructions.

5. Tool Pusher

- a) Report to the rig floor.
- b) Have a meeting with all crews.
- c) Compile and summarize all information.
- d) Calculate the proper kill weight.
- e) Ensure that proper well procedures are put into action.

6. Operator Representative

- a) Notify the Drilling Superintendent.
- b) Determine if an emergency exists and if so, activate the contingency plan.

B. Drill No. 2 – Tripping Pipe

1. Driller

- a) Sound the alarm immediately when mud volume increase has been detected.
- b) Position the upper tool joint just above the rotary table and set slips.
- c) Install a full opening valve or inside blowout preventor tool to close the drill pipe.
- d) Check flow.
- e) Record all data reported by the crew.

f) Determine the course of action.

2. Derrickman

- a) Come down out of derrick.
- b) Notify Tool Pusher and Operator Representative.
- c) Check for open fires and, if safe to do so, extinguish them.
- d) Stop all welding operations.
- e) Report to Driller for further instructions.

3. Floor Man # 1

- a) Pick up full opening valve or inside blowout preventor tool and stab into tool joint above rotary table (with Floor Man # 2).
- b) Tighten valve with back-up tongs.
- c) Close pipe rams after signal from Floor Man # 2.
- d) Read accumulator pressure and check for possible high pressure fluid leaks in valves or piping.
- e) Report to Driller for further instructions.

4. Floor Man # 2

- a) Pick-up full opening valve or inside blowout preventor tool and stab into tool joint above rotary table (with Floor Man # 1).
- b) Position back-up tongs on drill pipe.
- c) Open choke line valve at BOP.
- d) Signal Floor Man # 1 at accumulator that choke line is open.
- e) Close choke and upstream valve after pipe rams have been closed.
- f) Check for leaks on BOP stack and choke manifold.
- g) Read annular pressure.

h) Report readings to the Driller.

5. Tool Pusher

a) Report to the rig floor.

b) Have a meeting with all of the crews.

c) Compile and summarize all information.

d) See that proper well kill procedures are put into action.

6. Operator Representative

a) Notify Drilling Superintendent

b) Determine if an emergency exists, and if so, activate the contingency plan.

IGNITION PROCEDURES

Responsibility:

The decision to ignite the well is the responsibility of the DRILLING FOREMAN in concurrence with the STATE POLICE. In the event the Drilling Foreman is incapacitated, it becomes the responsibility of the RIG TOOL PUSHER. This decision should be made only as a last resort and in a situation where it is clear that:

1. Human life and property are endangered.
2. There is no hope of controlling the blowout under the prevailing conditions.

If time permits, notify the main office, but do not delay if human life is in danger. Initiate the first phase of the evacuation plan.

Instructions for Igniting the Well:

1. Two people are required for the actual igniting operation. Both men must wear self-contained breathing apparatus and must use a full body harness and attach a retrievable safety line to the D-Ring in the back. One man must monitor the atmosphere for explosive gases with the LEL monitor, while the Drilling Foreman is responsible for igniting the well.
2. The primary method to ignite is a 25mm flare gun with a range of approximately 500 feet.
3. Ignite from upwind and do not approach any closer than is warranted.
4. Select the ignition site best suited for protection and which offers an easy escape route.
5. Before igniting, check for the presence of combustible gases.
6. After igniting, continue emergency actions and procedures as before.
7. All unassigned personnel will limit their actions to those directed by the Drilling Foreman.

NOTE: After the well is ignited, burning Hydrogen Sulfide will convert to Sulfur Dioxide, which is also highly toxic. Do not assume the area is safe after the well is ignited.

TRAINING PROGRAM

When working in an area where Hydrogen Sulfide (H_2S) might be encountered, definite training requirements must be carried out. The Company Supervisor will ensure that all personnel, at the well site, have had adequate training in the following:

1. Hazards and Characteristics of Hydrogen Sulfide.
2. Physicals effects of Hydrogen Sulfide on the human body.
3. Toxicity of Hydrogen Sulfide and Sulfur Dioxide.
4. H_2S detection, emergency alarm and sensor location.
5. Emergency rescue.
6. Resuscitators.
7. First aid and artificial resuscitation.
8. The effects of Hydrogen Sulfide on metals.
9. Location safety.

Service company personnel and visiting personnel must be notified if the zone contains H_2S , and each service company must provide adequate training and equipment for their employees before they arrive at the well site.

EMERGENCY EQUIPMENT REQUIREMENTS

Lease Entrance Sign:

Should be located at the lease entrance with the following information:

CAUTION-POTENTIAL POISON GAS
HYDROGEN SULFIDE
NO ADMITTANCE WITHOUT AUTHORIZATION

Respiratory Equipment:

- Fresh air breathing equipment should be placed at the safe briefing areas and should include the following:
- Two SCBA's at each briefing area.
- Enough air line units to operate safely, anytime the H₂S concentration reaches the IDLH level (100 PPM).
- Cascade system with enough breathing air hose and manifolds to reach the rig floor, the derrickman and the other operation areas.

Windsocks or Wind Streamers:

- A minimum of two 10" windsocks located at strategic locations so that they may be seen from any point on location.
- Wind streamers (if preferred) should be placed at various locations on the well site to ensure wind consciousness at all times. (Corners of location).

Hydrogen Sulfide Detector and Alarms:

- 1-Four channel H₂S monitor with alarms.
- Four (4) sensors located as follows: # 1 – Rig Floor, # 2 – Bell Nipple, # 3 – Shale Shaker, # 4 – Mud Pits.
- Gastec or Draeger pump with tubes.
- Sensor test gas.

Well Condition Sign and Flags:

The Well Condition Sign w/flags should be placed a minimum of 150' before you enter the location. It should have three (3) color coded flags (green, yellow and red) that will be used to denote the following location conditions:

GREEN – Normal Operating Conditions
YELLOW – Potential Danger
RED – Danger, H2S Gas Present

Auxiliary Rescue Equipment:

- Stretcher
- 2 – 100' Rescue lines
- First Aid Kit properly stocked.

Mud Inspection Equipment:

Garret Gas Train or Hach Tester for inspection of Hydrogen Sulfide in the drilling mud system.

Fire Extinguishers:

Adequate fire extinguishers shall be located at strategic locations.

Blowout Preventor:

- The well shall have hydraulic BOP equipment for the anticipated BHP.
- The BOP should be tested upon installation.
- BOP, Choke Line and Kill Line will be tested as specified by Operator.

Confined Space Monitor:

There should be a portable multi-gas monitor with at least 3 sensors (O₂, LEL & H₂S). This instrument should be used to test the atmosphere of any confined space before entering. It should also be used for atmospheric testing for LEL gas before beginning any type of Hot Work. Proper calibration documentation will need to be provided.

Communication Equipment:

- Proper communication equipment such as cell phones or 2 – way radios should be available at the rig.

- Radio communication shall be available for communication between the company man's trailer, rig floor and the tool pusher's trailer.
- Communication equipment shall be available on the vehicles.

Special Control Equipment:

- Hydraulic BOP equipment with remote control on the ground.
- Rotating head at the surface casing point.

Evacuation Plan:

- Evacuation routes should be established prior to spudding the well.
- Should be discussed with all rig personnel.

Designated Areas:

Parking and Visitor area:

- All vehicles are to be parked at a pre-determined safe distance from the wellhead.
- Designated smoking area.

Safe Briefing Areas:

- Two Safe Briefing Areas shall be designated on either side of the location at the maximum allowable distance from the well bore so they offset prevailing winds or they are at a 180 degree angle if wind directions tend to shift in the area.
- Personal protective equipment should be stored at both briefing areas or if a moveable cascade trailer is used, it should be kept upwind of existing winds. When wind is from the prevailing direction, both briefing areas should be accessible.

NOTE:

- Additional equipment will be available at the nearest Callaway Safety Office.
- Additional personal H₂S monitors are available for all employees on location.

- Automatic Flare Igniters are recommended for installation on the rig.

CHECK LISTS

Status Check List

Note: Date each item as they are implemented.

1. Sign at location entrance. _____
2. Two (2) wind socks (in required locations). _____
3. Wind Streamers (if required). _____
4. SCBA's on location for all rig personnel and mud loggers. _____
5. Air packs, inspected and ready for use. _____
6. Spare bottles for each air pack (if required). _____
7. Cascade system for refilling air bottles. _____
8. Cascade system and hose line hook up. _____
9. Choke manifold hooked-up and tested.
(Before drilling out surface casing.) _____
10. Remote Hydraulic BOP control (hooked-up and tested before drilling out surface casing). _____
11. BOP tested (before drilling out surface casing). _____
12. Mud engineer on location with equipment to test mud for H₂S. _____
13. Safe Briefing Areas set-up. _____
14. Well Condition sign and flags on location and ready. _____
15. Hydrogen Sulfide detection system hooked-up & tested. _____
16. Hydrogen Sulfide alarm system hooked-up & tested. _____
17. Stretcher on location at Safe Briefing Area. _____
18. 2-100' Life Lines on location. _____

- 19. 1-20# Fire Extinguisher in safety trailer. _____
- 20. Confined Space Monitor on location and tested. _____
- 21. All rig crews and supervisor trained (as required). _____
- 22. Access restricted for unauthorized personnel. _____
- 23. Drills on H₂S and well control procedures. _____
- 24. All outside service contractors advised of potential H₂S on the well. _____
- 25. NO SMOKING sign posted. _____
- 26. H₂S Detector Pump w/tubes on location. _____
- 27. 25mm Flare Gun on location w/flares. _____
- 28. Automatic Flare Ignitor installed on rig. _____

Procedural Check List

Perform the following on each tour:

1. Check fire extinguishers to see that they have the proper charge.
2. Check Breathing equipment to insure that they have not been tampered with.
3. Check pressure on the supply air bottles to make sure they are capable of recharging.
4. Make sure all of the Hydrogen Sulfide detection systems are operative.

Perform the following each week:

1. Check each piece of breathing equipment to make sure that they are fully charged and operational. This requires that the air cylinder be opened and the mask assembly be put on and tested to make sure that the regulators and masks are properly working. Negative and Positive pressure should be conducted on all masks.
2. BOP skills.
3. Check supply pressure on BOP accumulator stand-by source.
4. Check all breathing air mask assemblies to see that straps are loosened and turned back, ready to use.
5. Check pressure on cascade air cylinders to make sure they are fully charged and ready to use for refill purposes if necessary.
6. Check all cascade system regulators to make sure they work properly.
7. Perform breathing drills with on-site personnel.
8. Check the following supplies for availability:
 - Stretcher
 - Safety Belts and ropes.
 - Spare air bottles.
 - Spare oxygen bottles (if resuscitator required).
 - Gas Detector Pump and tubes.
 - Emergency telephone lists.

9. Test the Confined Space Monitor to verify the batteries are good.

BRIEFING PROCEDURES

The following scheduled briefings will be held to ensure the effective drilling and operation of this project:

Pre-Spud Meeting

Date: Prior to spudding the well.

Attendance: Drilling Supervisor
Drilling Engineer
Drilling Foreman
Rig Tool Pushers
Rig Drillers
Mud Engineer
All Safety Personnel
Key Service Company Personnel

Purpose: Review and discuss the well program, step-by-step, to insure complete understanding of assignments and responsibilities.

EVACUATION PLAN

General Plan

The direct lines of action prepared by CALLAWAY SAFETY EQUIPMENT CO., INC., to protect the public from hazardous gas situations are as follows:

1. When the company approved supervisor (Drilling Foremen, Tool Pusher or Driller) determine that Hydrogen Sulfide gas cannot be limited to the well location, and the public will be involved, he will activate the evacuation plan. Escape routes are noted on the Area Map.
2. Company safety personnel or designee will notify the appropriate local government agency that a hazardous condition exists and evacuation need to be implemented.
3. Company approved safety personnel that have been trained in the use of the proper emergency equipment will be utilized.
4. Law enforcement personnel (State Police, Local Police Department, Fire Department, and the Sheriff's Department) will be called to aid in setting up and maintaining road blocks. Also, they will aid in evacuation of the public if necessary.

NOTE: Law enforcement personnel will not be asked to come into a contaminated area. Their assistance will be limited to uncontaminated areas. Constant radio contact will be maintained with them.

5. After the discharge of gas has been controlled, "Company" safety personnel will determine when the area is safe for re-entry.

See Emergency Action Plan

Emergency Assistance Telephone List

PUBLIC SAFETY:

911 or

Chavez Co. Sheriff	(505) 624-6770
Fire Department	(505) 624-6800
Hospital/Roswell, N.M.	(505) 622-8170

Life Flight:

Southwest Air-Med E Vac.	(800) 242-6199
--------------------------	----------------

Lat: 33°01'17.73"N.

Long: 104°26'42.18" W.

New Mexico D.O.T.	(505) 827-5100
Bureau of Land Management	(505) 393-3612
U. S. Dept. of Labor	(505) 248-5302
New Mexico OCD	(505) 393-6161
New Mexico/After Hours	(505) 370-7106

Parallel Petroleum Corporation

Parallel Petroleum Corporation/Midland, TX	Office (432) 684-3727
--	-----------------------

Superintendent:

Donnie Hill

Office (432) 684-3727

Cell (432) 934-7164

Drilling Engineer:

Deane Durham

Office (432) 684-3727

Cell (432) 413-9701

Callaway Safety Equipment

Odessa

Office (432) 561-5049

Hobbs

Office (877) 422-6345

Affected Notification List

(within a _____' radius of exposure @100ppm)

The geologic zones that will be encountered during drilling are not known to contain hazardous quantities of H₂S. The accompanying map illustrates the affected areas of the community. The residents within this radius will be notified via a hand delivered written notice describing the activities, potential hazards, conditions of evacuation, evacuation drill siren alarms and other precautionary measures.

Evacuee Description:

Residents: **THERE ARE NO RESIDENTS WITHIN 3000' ROE.**

Notification Process:

A continuous siren audible to all residence will be activated, signaling evacuation of previously notified and informed residents.

Evacuation Plan:

All evacuees will migrate lateral to the wind direction.

The Oil Company will identify all home bound or highly susceptible individuals and make special evacuation preparations, interfacing with the local and emergency medical service as necessary.

MAPS AND PLATS
(Maps & Plats Attached)

GENERAL INFORMATION

Toxic Effects of H₂S Poisoning

Hydrogen Sulfide is extremely toxic. The acceptable ceiling concentration for eight-hour exposure is 10 PPM, which is .001% by volume. Hydrogen Sulfide is heavier than air (specific gravity-1.192) and is colorless and transparent. Hydrogen Sulfide is almost as toxic as Hydrogen Cyanide and is 5-6 times more toxic than Carbon Monoxide. Occupational exposure limits for Hydrogen sulfide and other gasses are compared below in Table I. Toxicity table for H₂S and physical effects are shown in Table II.

Table 1
Permissible Exposure Limits of Various Gasses

Common Name	Symbol	Sp. Gravity	TLV	STEL	IDLH
Hydrogen Cyanide	HCN	.94	4.7 ppm	C	
Hydrogen Sulfide	H ₂ S	1.192	10 ppm	15 ppm	100 ppm
Sulfur Dioxide	SO ₂	2.21	2 ppm	5 ppm	
Chlorine	CL	2.45	.5 ppm	1 ppm	
Carbon Monoxide	CO	0.97	25 ppm	200 ppm	
Carbon Dioxide	CO ₂	1.52	5000 ppm	30,000 ppm	
Methane	CH ₄	0.55	4.7% LEL	14% UEL	

Definitions

- A. TLV – Threshold Limit Value is the concentration employees may be exposed to based on a TWA (time weighted average) for eight (8) hours in one day for 40 hours in one (1) week. This is set by ACGIH (American Conference of Governmental Hygienists and regulated by OSHA.
- B. STEL – Short Term Exposure Limit is the 15 minute average concentration an employee may be exposed to providing that the highest exposure never exceeds the OEL (Occupational Exposure Limit). The OEL for H₂S is 19 PPM.
- C. IDLH – Immediately Dangerous to Life and Health is the concentration that has been determined by the ACGIH to cause serious health problems or death if exposed to this level. The IDLH for H₂S is 100 PPM.

- D. TWA – Time Weighted Average is the average concentration of any chemical or gas for an eight (8) hour period. This is the concentration that any employee may be exposed to based on an TWA.

TABLE II
Toxicity Table of H₂S

Percent %	PPM	Physical Effects
.0001	1	Can smell less than 1 ppm.
.001	10	TLV for 8 hours of exposure
.0015	15	STEL for 15 minutes of exposure
.01	100	Immediately Dangerous to Life & Health. Kills sense of smell in 3 to 5 minutes.
.02	200	Kills sense of smell quickly, may burn eyes and throat.
.05	500	Dizziness, cessation of breathing begins in a few minutes.
.07	700	Unconscious quickly, death will result if not rescued promptly.
.10	1000	Death will result unless rescued promptly. Artificial resuscitation may be necessary.

PHYSICAL PROPERTIES OF H₂S

The properties of all gasses are usually described in the context of seven major categories:

COLOR
ODOR
VAPOR DENSITY
EXPLOSIVE LIMITS
FLAMMABILITY
SOLUBILITY (IN WATER)
BOILING POINT

Hydrogen Sulfide is no exception. Information from these categories should be considered in order to provide a fairly complete picture of the properties of the gas.

COLOR – TRANSPARENT

Hydrogen Sulfide is colorless so it is invisible. This fact simply means that you can't rely on your eyes to detect its presence. a fact that makes the gas extremely dangerous to be around.

ODOR – ROTTEN EGGS

Hydrogen Sulfide has a distinctive offensive smell, similar to "rotten eggs". For this reason it earned its common name "sour gas". However, H₂S, even in low concentrations, is so toxic that it attacks and quickly impairs a victim's sense of smell, so it could be fatal to rely on your nose as a detection device.

VAPOR DENSITY – SPECIFIC GRAVITY OF 1.192

Hydrogen Sulfide is heavier than air so it tends to settle in low-lying areas like pits, cellars or tanks. If you find yourself in a location where H₂S is known to exist, protect yourself. Whenever possible, work in an area upwind and keep to higher ground.

EXPLOSIVE LIMITS – 4.3% TO 46%

Mixed with the right proportion of air or oxygen, H₂S will ignite and burn or explode, producing another alarming element of danger besides poisoning.

FLAMMABILITY

Hydrogen Sulfide will burn readily with a distinctive clear blue flame, producing Sulfur Dioxide (SO₂), another hazardous gas that irritates the eyes and lungs.

SOLUBILITY – 4 TO 1 RATIO WITH WATER

Hydrogen Sulfide can be dissolved in liquids, which means that it can be present in any container or vessel used to carry or hold well fluids including oil, water, emulsion and sludge. The solubility of H₂S is dependent on temperature and pressure, but if conditions are right, simply agitating a fluid containing H₂S may release the gas into the air.

BOILING POINT – (-76 degrees Fahrenheit)

Liquefied Hydrogen Sulfide boils at a very low temperature, so it is usually found as a gas.

RESPIRATOR USE

The Occupational Safety and Health Administration (OSHA) regulates the use of respiratory protection to protect the health of employees. OSHA's requirements are written in the Code of Federal Regulations, Title 29, Part 1910, Section 134, Respiratory Protection. This regulation requires that all employees who might be required to wear respirators, shall complete a OSHA mandated medical evaluation questionnaire . The employee then should be fit tested prior to wearing any respirator while being exposed to hazardous gasses.

Written procedures shall be prepared covering safe use of respirators in dangerous atmospheric situations, which might be encountered in normal operations or in emergencies. Personnel shall be familiar with these procedures and the available respirators.

Respirators shall be inspected prior to and after each use to make sure that the respirator has been properly cleaned, disinfected and that the respirator works properly. The unit should be fully charged prior to being used.

Anyone who may use respirators shall be properly trained in how to properly seal the face piece. They shall wear respirators in normal air and then in a test atmosphere. (Note: Such items as facial hair (beard or sideburns) and eyeglass temple pieces will not allow a proper seal.) Anyone that may be expected to wear respirators should have these items removed before entering a toxic atmosphere. A special mask must be obtained for anyone who must wear eyeglasses. Contact lenses should not be allowed.

Respirators shall be worn during the following conditions:

- A. Any employee who works near the top or on the top of any tank unless tests reveal less than 20 ppm of H₂S.
- B. When breaking out any line where H₂S can reasonably be expected.
- C. When sampling air in areas where H₂S may be present.
- D. When working in areas where the concentration of H₂S exceeds the Threshold Limit Value for H₂S (10 ppm).
- E. At any time where there is a doubt as to the H₂S level in the area to be entered.

EMERGENCY RESCUE PROCEDURES

DO NOT PANIC!!!

Remain Calm - THINK

1. Before attempting any rescue you must first get out of the hazardous area yourself. Go to a safe briefing area.
2. Sound an alarm and activate the 911 system.
3. Put on breathing apparatus. At least two persons should do this, when available use the buddy system.
4. Rescue the victim and return them to a safe briefing area.
5. Perform an initial assessment and begin proper First Aid/CPR procedures.
6. Keep the victim lying down with a blanket or coat, etc..., under the shoulders to keep airway open. Conserve body heat and do not leave unattended.
7. If the eyes are affected by H₂S, wash them thoroughly with potable water. For slight irritation, cold compresses are helpful.
8. In case a person has only minor exposure and does not lose consciousness totally, it's best if he doesn't return to work until the following day.
9. Any personnel overcome by H₂S should always be examined by medical personnel. They should always be transported to a hospital or doctor.