

Box 1980, Hobbs, NM 88241-1980

State of New Mexico

Energy, Minerals and Natural Resources Department

Form C-102

Revised: February 10, 1984

Appropriate District Office

State Lease - 4 Copies

For Lease - 3 Copies

DISTRICT II

P.O. Drawer DD, Artesia, NM 86211-0710

OIL CONSERVATION DIVISION

P.O. Box 2088

Santa Fe, New Mexico 87504-2088

DISTRICT III

1000 Rio Brazos Rd., Artec, NM 87410

DISTRICT IV

P.O. BOX 2068, SANTA FE, N.M. 87504-2068

WELL LOCATION AND ACREAGE DEDICATION PLAT

☒ AMENDED REPORT

API Number 30-015-31891	Pool Code 28509	Pool Name Grayburg Jackson 7RVS-QN-CB-SA
Property Code 302504	Property Name HOLDER CB FEDERAL	Well Number 6
OGRID No. 229137	Operator Name COG Operating LLC	Elevation 3654'

Surface Location

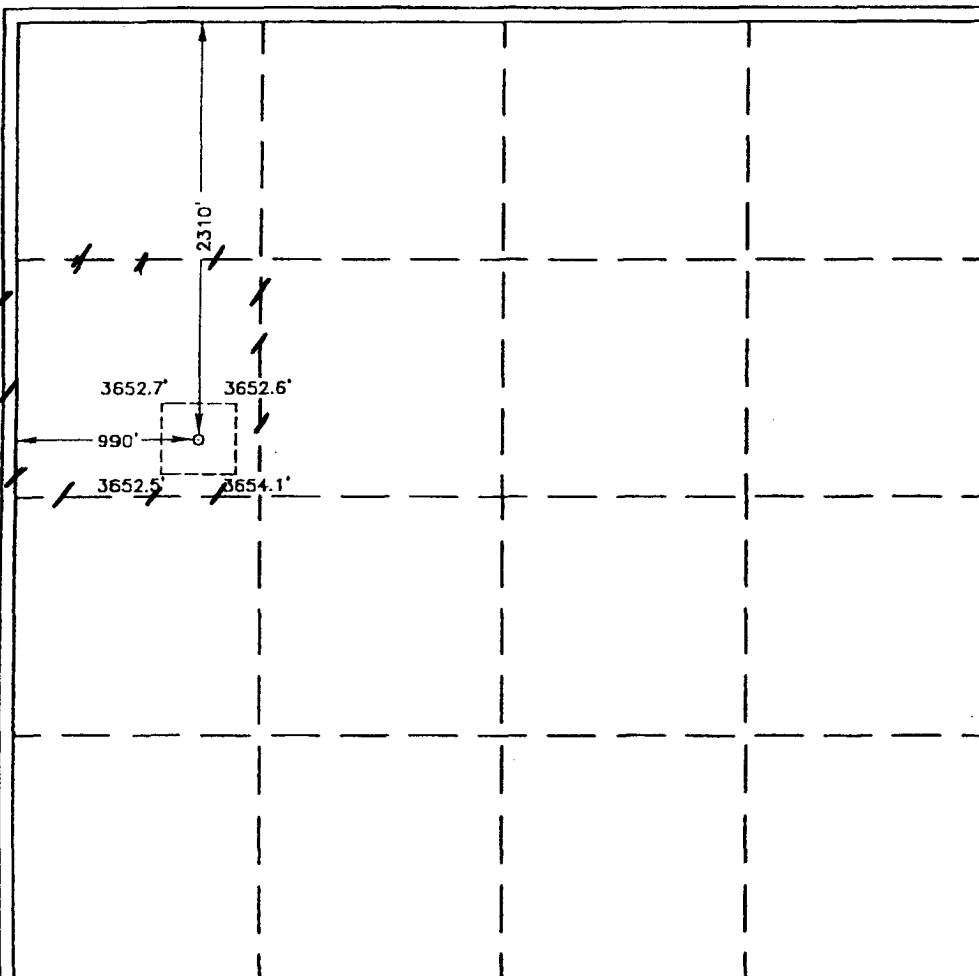
UL or lot No.	Section	Township	Range	Lot Idn	Feet from the	North/South line	Feet from the	East/West line	County
E	17	17-S	30-E		2310	NORTH	990	WEST	EDDY

Bottom Hole Location If Different From Surface

UL or lot No.	Section	Township	Range	Lot Idn	Feet from the	North/South line	Feet from the	East/West line	County
---------------	---------	----------	-------	---------	---------------	------------------	---------------	----------------	--------

Dedicated Acres	Joint or Infill	Consolidation Code	Order No.
40			

NO ALLOWABLE WILL BE ASSIGNED TO THIS COMPLETION UNTIL ALL INTERESTS HAVE BEEN CONSOLIDATED
OR A NON-STANDARD UNIT HAS BEEN APPROVED BY THE DIVISION



OPERATOR CERTIFICATION

I hereby certify the the information
contained herein is true and complete to the
best of my knowledge and belief.

Jerry W. Shenell
Signature

Jerry W. Sherrell

Printed Name _____

Production Clerk

Title

5/24/2001

Date _____

SURVEYOR CERTIFICATION

I hereby certify that the well location shown on this plat was plotted from field notes of actual surveys made by me or under my supervision and that the same is true and correct to the best of my belief.

MAX 18 2001

Date Surveyed _____

AWB

Signature & Seal of
Professional Surveyor

Ronald E. Eide 5.17.01
01-11-0632

Certificate No. **RONALD J. EIDSON** 3239
GARY EIDSON 12641