

RECEIVED

DISTRICT I
1825 N. French Dr., Hobbs, NM 88240

DISTRICT II
811 South First, Artesia, NM 88210

DISTRICT III
1000 Rio Brazos Rd., Artec, NM 87410

DISTRICT IV
2040 South Pacheco, Santa Fe, NM 87505

State of New Mexico MAY 04 2006

Energy, Minerals and Natural Resources Department

Form C-102
Revised March 17, 1999

Submit to Appropriate District Office
State Lease - 4 Copies
Fee Lease - 3 Copies

OIL CONSERVATION DIVISION

2040 South Pacheco
Santa Fe, New Mexico 87504-2088

AMENDED REPORT

WELL LOCATION AND ACREAGE DEDICATION PLAT

API Number 30-015-34183	Pool Code 47545	Pool Name NASH DRAW - DELAWARE
Property Code 001796	Property Name POKER LAKE UNIT	Well Number 163
OGRID No. 001801	Operator Name BASS ENTERPRISES PRODUCTION COMPANY	Elevation 3235'

Surface Location

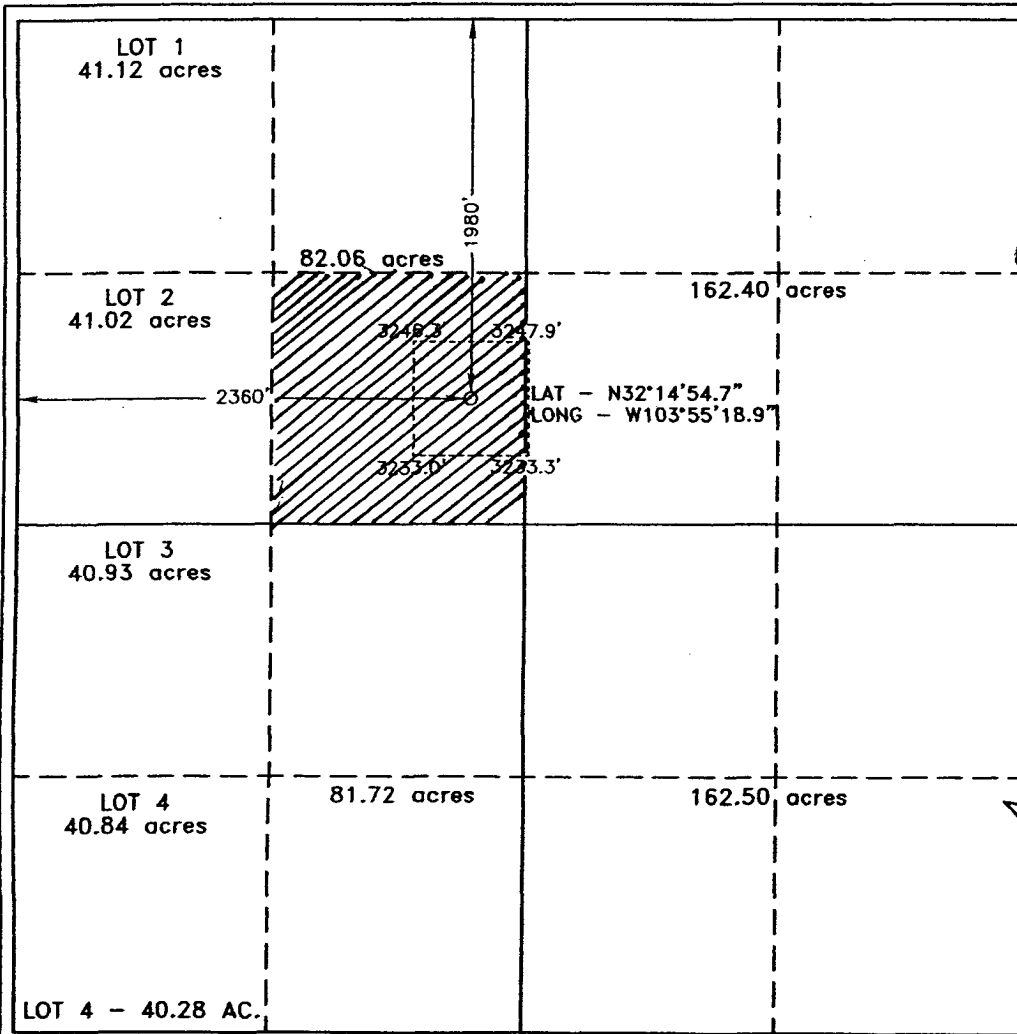
UL or lot No.	Section	Township	Range	Lot Idn	Feet from the	North/South line	Feet from the	East/West line	County
F	6	24 S	30 E		1980	NORTH	2360	WEST	EDDY

Bottom Hole Location If Different From Surface

UL or lot No.	Section	Township	Range	Lot Idn	Feet from the	North/South line	Feet from the	East/West line	County

Dedicated Acres 40	Joint or Infill N	Consolidation Code	Order No.
-----------------------	----------------------	--------------------	-----------

NO ALLOWABLE WILL BE ASSIGNED TO THIS COMPLETION UNTIL ALL INTERESTS HAVE BEEN CONSOLIDATED OR A NON-STANDARD UNIT HAS BEEN APPROVED BY THE DIVISION



OPERATOR CERTIFICATION

I hereby certify the the information contained herein is true and complete to the best of my knowledge and belief.

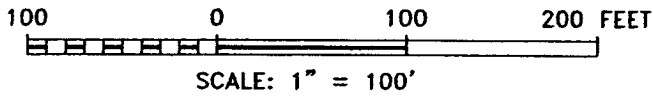
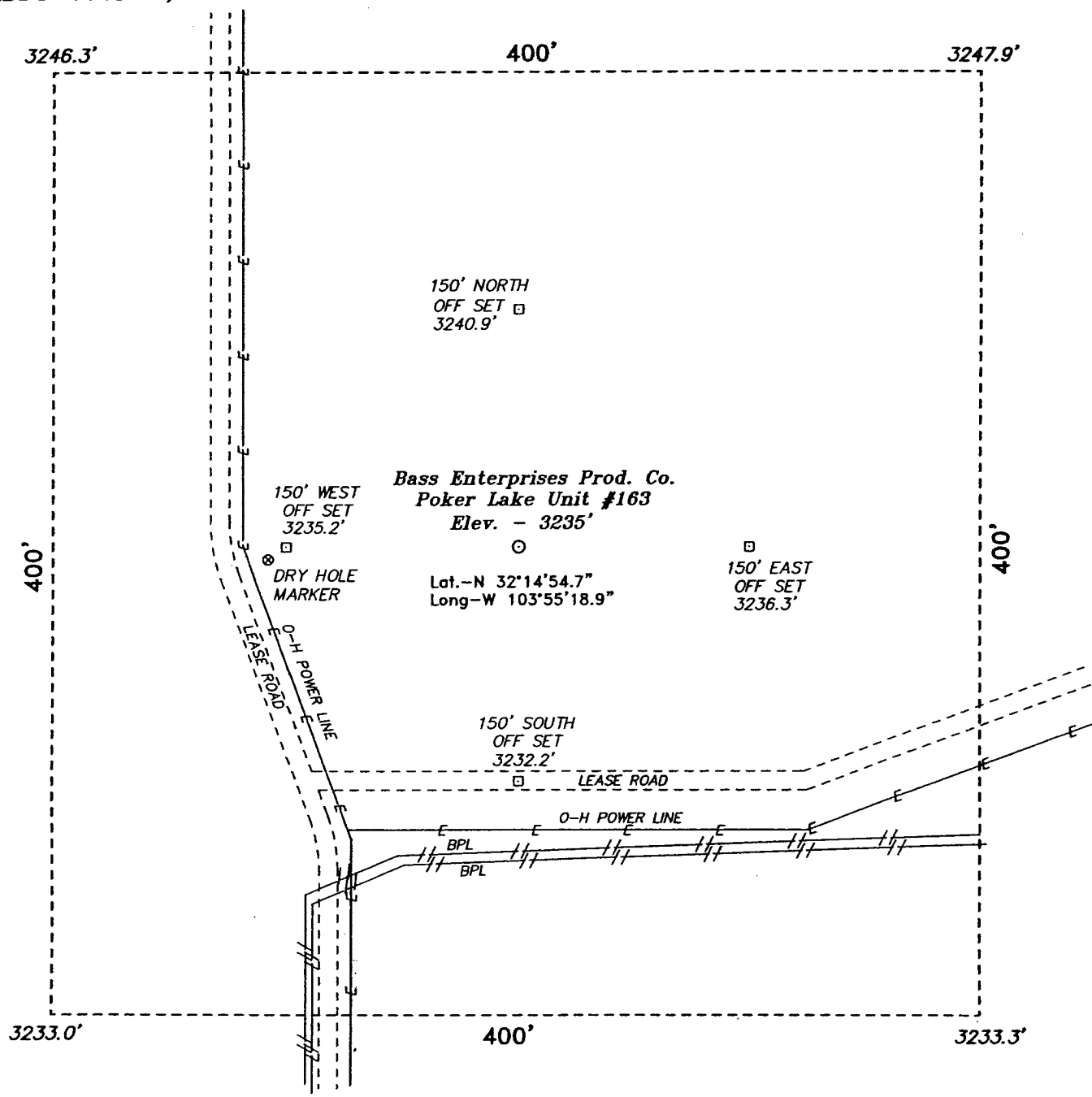
W.R. Dannels
Signature
W.R. DANNELS
Printed Name
DIVISION DRILLING SUPT.
Title
7/18/05
Date

SURVEYOR CERTIFICATION

I hereby certify that the well location shown on this plat was plotted from field notes of actual surveys made by me or under my supervision, and that the same is true and correct to the best of my belief.

JUNE 16, 2005
Date Surveyed
Signature of Gary L. Jones
Professional Surveyor
Professional Surveyor Seal
No. 5522
Certificate No. Gary L. Jones 7977
BASIN SURVEYORS

SECTION 6, TOWNSHIP 24 SOUTH, RANGE 30 EAST, N.M.P.M.,
 EDDY COUNTY, NEW MEXICO.



DIRECTIONS TO LOCATION:

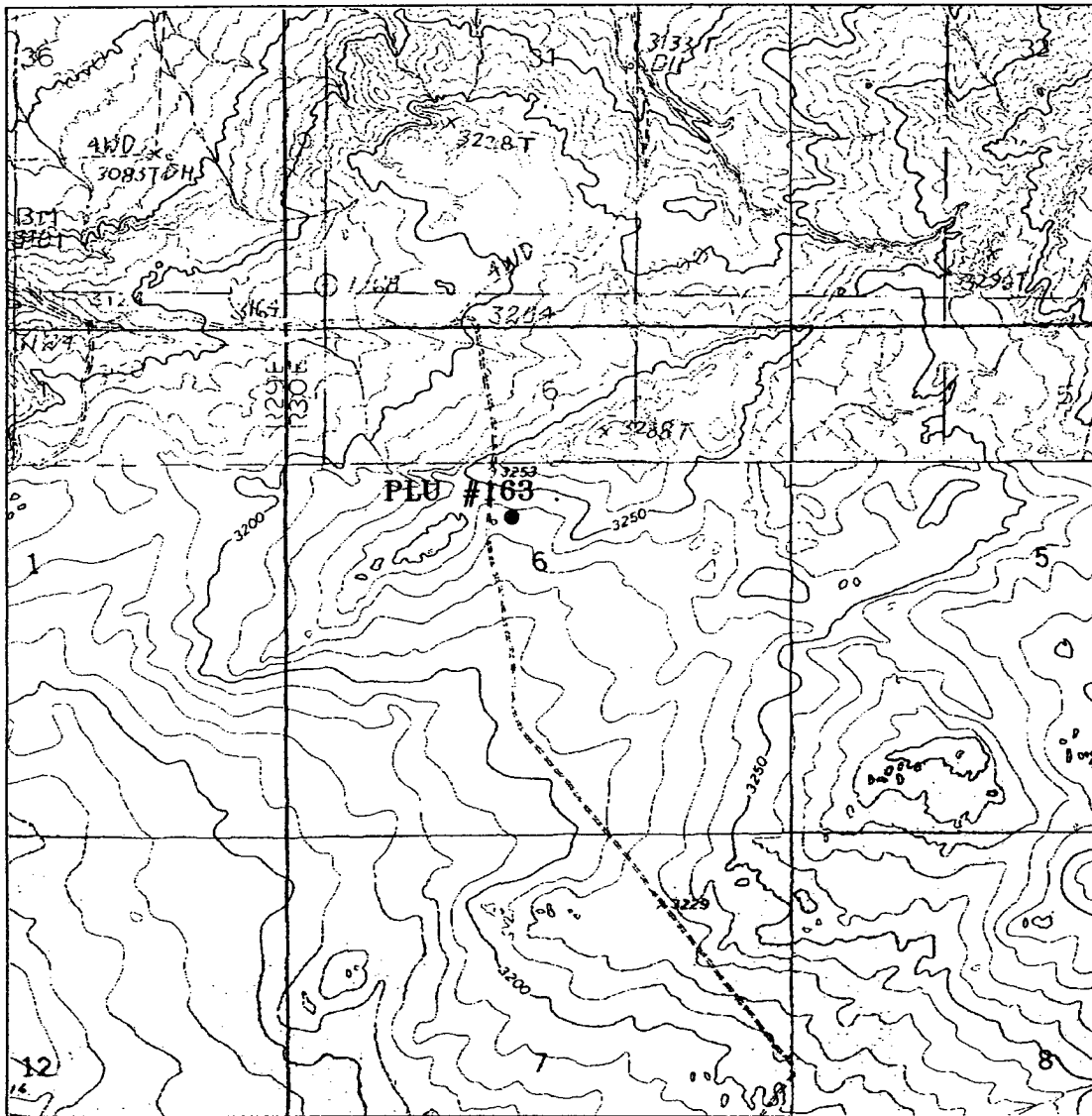
FROM THE JUNCTION OF STATE HWY 128 & CO. RD. 793, GO SOUTH AND WEST ON CO. RD. 793 APPROX. 4.0 MILES TO A LEASE ROAD; THENCE SOUTH ON LEASE ROAD APPROX. 4 MILES TO A POINT ON THE PROPOSED WELL LOCATION.

BASIN SURVEYS P.O. BOX 1786-HOBBS, NEW MEXICO

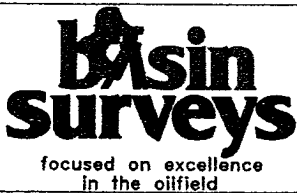
W.O. Number: 5522 Drawn By: K. GOAD

Date: 06-20-2005 Disk: KJG #122 - 5522A.DWG

BASS ENTERPRISES PRODUCTION CO.
REF: Poker Lake Unit No. 163 / Well Pad Topo
THE POKER LAKE UNIT No. 163 LOCATED 1980' FROM THE NORTH LINE AND 2360' FROM THE WEST LINE OF SECTION 6, TOWNSHIP 24 SOUTH, RANGE 30 EAST, N.M.P.M., EDDY COUNTY, NEW MEXICO.
Survey Date: 06-16-2005 Sheet 1 of 1 Sheets



POKER LAKE UNIT #163
 Located at 1980' FNL and 2360' FWL
 Section 6, Township 24 South, Range 30 East,
 N.M.P.M., Eddy County, New Mexico.



P.O. Box 1786
 1120 N. West County Rd.
 Hobbs, New Mexico 88241
 (505) 393-7316 - Office
 (505) 392-3074 - Fax
 basinsurveys.com

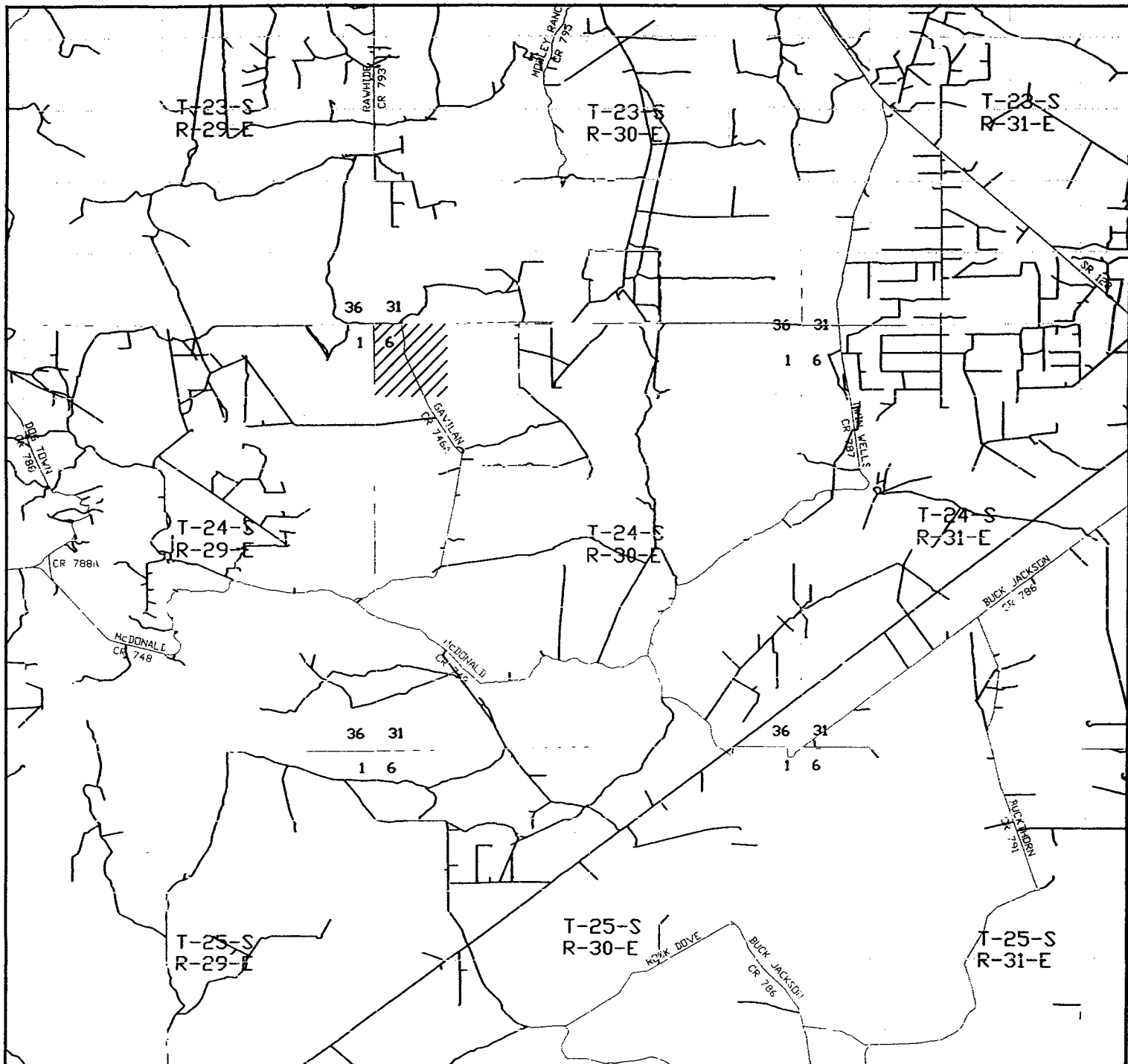
W.O. Number: 5522AA - KJG #7

Survey Date: 06-16-2005

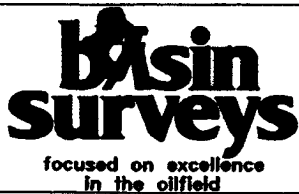
Scale: 1" = 2000'

Date: 06-20-2005

**BASS ENTERPRISES
 PRODUCTION CO.**



POKER LAKE UNIT #163
 Located at 1980' FNL and 2360' FWL
 Section 6, Township 24 South, Range 30 East,
 N.M.P.M., Eddy County, New Mexico.



P.O. Box 1786
 1120 N. West County Rd.
 Hobbs, New Mexico 88241
 (505) 393-7316 - Office
 (505) 392-3074 - Fax
 basinsurveys.com

W.O. Number: 5522AA - KJG #7

Survey Date: 06-16-2005

Scale: 1" = 2 MILES

Date: 06-20-2005

**BASS ENTERPRISES
 PRODUCTION CO.**