

District I  
1625 N. French Dr., Hobbs, NM 88240  
District II  
1301 W. Grand Avenue, Artesia, NM 88210  
District III  
1000 Rio Brazos Rd., Aztec, NM 87410  
District IV  
1220 S. St. Francis Dr., Santa Fe, NM 87505

State of New Mexico  
Energy, Minerals & Natural Resources

5 Form C-104  
Reformatted July 20, 2001

Oil Conservation Division  
1220 South St. Francis Dr.  
Santa Fe, NM 87505

Submit to Appropriate District Office  
5 Copies

☐ AMENDED REPORT

I. REQUEST FOR ALLOWABLE AND AUTHORIZATION TO TRANSPORT

<sup>1</sup> Operator name and Address Devon Energy Production Company, L.P. 20 N. Broadway, Suite 1500 OKC, OK 73102		<sup>2</sup> OGRID Number 6137
<sup>3</sup> Reason for Filing Code/ Effective Date RC / Plug Back Morrow to Strawn		
<sup>4</sup> API Number 30 -015-23703	<sup>5</sup> Pool Name Travis, Upper Penn	<sup>6</sup> Pool Code 59860
<sup>7</sup> Property Code 3467	<sup>8</sup> Property Name Hondo Sinclair State Com.	<sup>9</sup> Well Number 1

II. <sup>10</sup> Surface Location

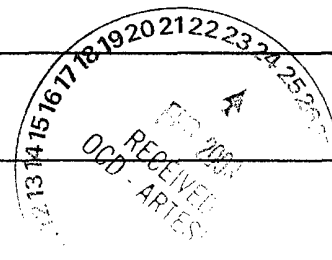
UL or lot no.	Section	Township	Range	Lot Idn	Feet from the	North/South Line	Feet from the	East/West line	County
G	28	18S	28E		1980'	north	1980'	east	Eddy, NM

<sup>11</sup> Bottom Hole Location

UL or lot no.	Section	Township	Range	Lot Idn	Feet from the	North/South Line	Feet from the	East/West Line	County
<sup>12</sup> Lse Code S	<sup>13</sup> Producing F	<sup>14</sup> Gas 07/31/2002	<sup>15</sup> C-129 Permit Number	<sup>16</sup> C-129 Effective Date	<sup>17</sup> C-129 Expiration Date				

III. Oil and Gas Transporters

<sup>18</sup> Transporter OGRID	<sup>19</sup> Transporter Name and Address	<sup>20</sup> POD	<sup>21</sup> O/G	<sup>22</sup> POD ULSTR Location and Description
209700	BP Pipeline North America 502 N. West Ave. Levelland, TX 79336	2835227	O	1980' FNL & 1980' FEL Sec. G-28-T18S-R28E Eddy Cnty, NM



IV. Produced Water

<sup>23</sup> POD 2835228	<sup>24</sup> POD ULSTR Location and Description 1980' FNL & 1980' FE Sec. G-28-T18S-R28E, Eddy Cnty,
------------------------------	---

V. Well Completion Data

<sup>25</sup> Spud Date 6-14-2002 10/20/1981	<sup>26</sup> Ready Date 7-31-2002	<sup>27</sup> TD 10,950'	<sup>28</sup> PBTD 10,065'	<sup>29</sup> Perforations 9392-9494'	<sup>30</sup> DHC. MC
<sup>31</sup> Hole Size	<sup>32</sup> Casing & Tubing Size	<sup>33</sup> Depth Set	<sup>34</sup> Sacks Cement		
17 1/2"	13 3/8" J-55 54.5#	652'	700 sx		
12 1/2"	8 5/8" S-80 28#	2650'	1500 sx		
7 7/8"	5 1/2" L-80 17#	10,793'	1600 sx		
	2 7/8" 6.5# N-80	9313' open ended			

VI. Well Test Data

<sup>35</sup> Date New Oil 09/11/2002	<sup>36</sup> Gas Delivery Date WOPL	<sup>37</sup> Test Date 09/11/2002	<sup>38</sup> Test Length 24 hrs	<sup>39</sup> Tbg. Pressure 440 psi	<sup>40</sup> Csg. Pressure 560 psi
<sup>41</sup> Choke Size 64/64"	<sup>42</sup> Oil 8 BOPD	<sup>43</sup> Water 3 BWPD	<sup>44</sup> Gas venting	<sup>45</sup> AOF	Test Method plunger lift
<sup>47</sup> I hereby certify that the rules of the Oil Conservation Division Have been complied with and that the information given above is true and complete to the best of my knowledge and belief. Signature: Candace R. Graham			OIL CONSERVATION DIVISION Approved by: Jim W. Brown		
Printed Name: Candace R. Graham X4520			Title: District Supervisor		
Title: Engineering Tech.			Approval Date: FEB 26 2003		
Date: 11/04/2002		Phone: (405)235-3611			

CF

API 30-015-23703

NMOED Form C-102

DEVON ENERGY PRODUCTION COMPANY, L.P. (6137)

X Amended \*change unit

HONDO SINCLAIR STATE COM. #1 (3467) configuration

Hondo Oil &amp; Gas Co.

Hondo State Com. #1

Candace R. Graham

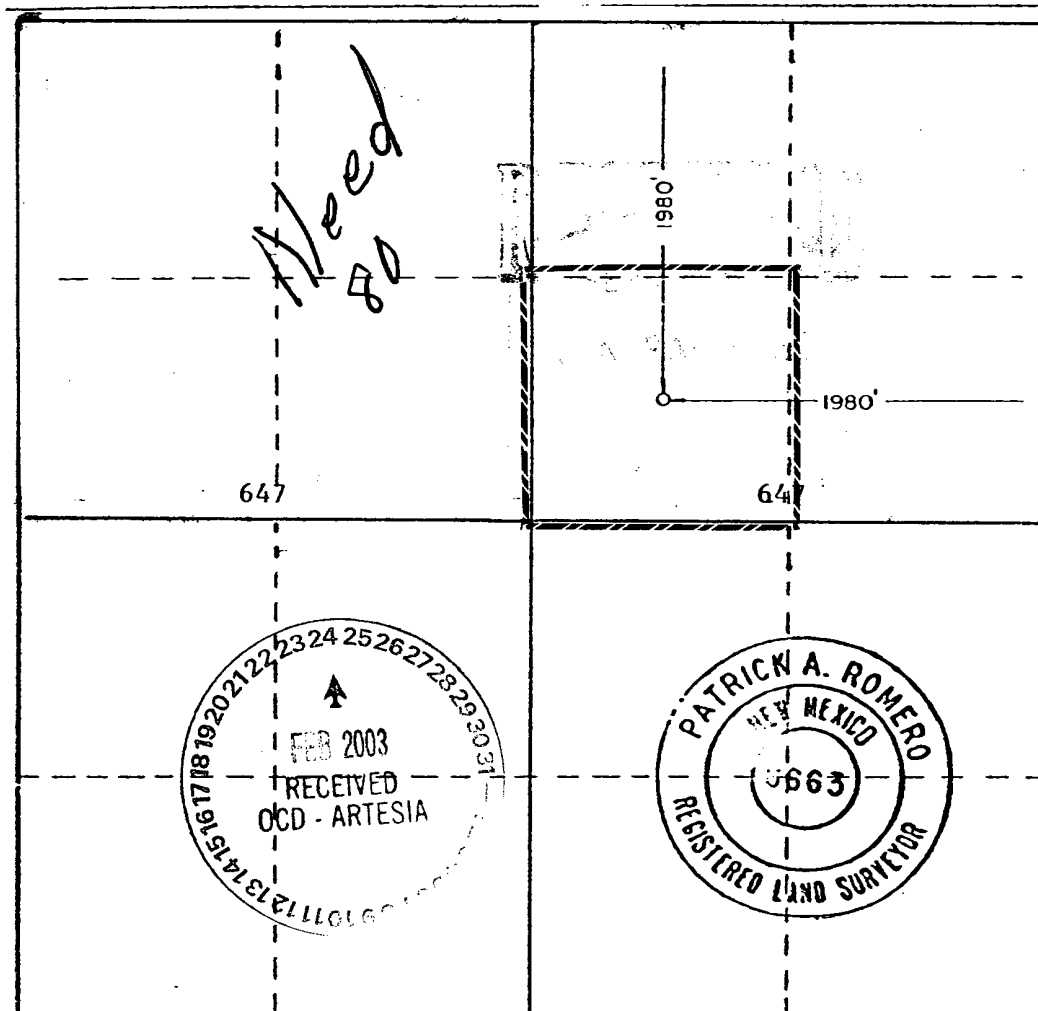
Unit Letter G	Section 28	Township 18 South	Range 28 East	County Eddy
Actual Footage Location of Well: 1980 feet from the north line and 1980 feet from the east line				
Ground Level Elev. 3537.2	Producing Formation <del>Morrow Gas</del> Strawn	Pool Wildcat <del>Hwy 70</del>	(Strawn)	Dedicated Acreage: <del>320</del> 40 Acres

1. Outline the acreage dedicated to the subject well by colored pencil or hachure marks on the plat below.
2. If more than one lease is dedicated to the well, outline each and identify the ownership thereof (both as to working interest and royalty).
3. If more than one lease of different ownership is dedicated to the well, have the interests of all owners been consolidated by communitization, unitization, force-pooling, etc?

☐ Yes ☒ No If answer is "yes," type of consolidation \_\_\_\_\_

If answer is "no," list the owners and tract descriptions which have actually been consolidated. (Use reverse side of this form if necessary.) See reverse side for list of owners

No allowable will be assigned to the well until all interests have been consolidated (by communitization, unitization, forced-pooling, or otherwise) or until a non-standard unit, eliminating such interests, has been approved by the Commission.



## CERTIFICATION

I hereby certify that the information contained herein is true and complete to the best of my knowledge and belief.

Name

Daniel J. W. Schick

Position

Dist. Dir. Supt.

Company ARCO Oil & Gas Company  
Division of Atlantic Richfield

Date

\*February 18, 2003

I hereby certify that the well location shown on this plat was plotted from field notes of actual surveys made by me or under my supervision, and that the same is true and correct to the best of my knowledge and belief.

Date Surveyed

3-2-81

Registered Professional Engineer  
and/or Land Surveyor

Patrick A. Romero

Certificate No. JOHN W. WEST 678  
PATRICK A. ROMERO 5365  
Ronald J. Eddy 3232