

UNITED STATES
DEPARTMENT OF THE INTERIOR
BUREAU OF LAND MANAGEMENT

WELL COMPLETION OR RECOMPLETION REPORT AND LOG

FORM APPROVED
OMB NO. 1004-0137
Expires: March 31, 2007

1a. Type of Well ☒ Oil Well ☐ Gas Well ☐ Dry ☐ Other
b. Type of Completion ☒ New Well ☐ Work Over ☐ Deepen ☐ Plug Back ☐ Diff. Resvr.,
Other _____

2. Name of Operator
BEPCO, L. P.

3. Address
P. O. Box 2760 Midland TX 79702

3.a Phone No. (Include area code)
(432)683-2277

4. Location of Well (Report location clearly and in accordance with Federal requirements)*

At Surface SESW, UL N, 660 FSL, 660 FWL, LAT N 22°26'67" E LONG W 103.923194

At top prod. interval reported below SAME

At total depth

14. Date Spudded
05/16/2006

15. Date T.D. Reached
05/27/2006

16. Date Completed
☐ D & A ☒ Ready to Prod.
06/17/2006

18. Total Depth: MD 7450'
TVD

19. Plug Back T.D.: MD 7369'
TVD

20. Depth Bridge Plug Set: MD
TVD

21. Type of Electric & Other Mechanical Logs Run (Submit copy of each)
GR-CLN-LDT; GR-AIT

22. Was well cored? ☒ No ☐ Yes (Submit analysis)
Was DST run? ☒ No ☐ Yes (Submit analysis)
Directional Survey? ☐ No ☒ Yes (Submit copy)

23. Casing and Liner Record (Report all strings set in well)

Hole Size	Size/Grade	Wt. (#/ft.)	Top (MD)	Bottom (MD)	Stage Cementer Depth	No. of Sk. & Type of Cement	Slurry Vol. (BBL)	Cement Top*	Amount Pulled
12-1/4"	8-5/8"J55	32#	0'	659'		500		0'	
7-7/8"	5-1/2"J55	15.5/17#	0'	7448'		822		3357' TS	

24. Tubing Record

Size	Depth Set (MD)	Packer Depth (MD)	Size	Depth Set (MD)	Packer Depth (MD)	Size	Depth Set (MD)	Packer Depth (MD)
2-7/8"	7322'							

25. Producing Intervals

Formation	Top	Bottom	Perforated Interval	Size	No. Holes	Perf. Status
A) DELAWARE	7020'	7312'	7020'-7040'	0.380	20	PRODUCING
B)			7276'-7284'	0.380	8	PRODUCING
C)			7302'-7312'	0.380	10	PRODUCING
D)						

27. Acid, Fracture, Treatment, Cement Squeeze, Etc.

Depth Interval	Amount and Type of Material
7020' - 7040'	122,602 GALS PW + 10,000# 14/30 LITE PROP
7276' - 7312'	122,599 GALS PW + 10,000# 14/30 LITE PROP

28. Production - Interval A

Date First Produced	Test Date	Hours Tested	Test Production	Oil BBL	Gas MCF	Water BBL	Oil Gravity Corr. API	Gas Gravity	Production Method
6/17/06	6/25/06	24	→	93	205	217			PUMPING
Choice Size	Tbg. Press. Flwg. SI	Csg. Press. SI	24 Hr. Rate	Oil BBL	Gas MCF	Water BBL	Gas : Oil Ratio	Well Status	
14/64"	200	800	→	93	205	217		PRODUCING	

Production - Interval B

Date First Produced	Test Date	Hours Tested	Test Production	Oil BBL	Gas MCF	Water BBL	Oil Gravity Corr. API	Gas Gravity	Production Method
			→						
Choke Size	Tbg. Press. Flwg. SI	Csg. Press. SI	24 Hr. Rate	Oil BBL	Gas MCF	Water BBL	Gas : Oil Ratio	Well Status	
			→						

(See Instructions and spaces for additional data on page 2)

28b. Production - Interval C

Date First Produced	Test Date	Hours Tested	Test Production →	Oil BBL	Gas MCF	Water BBL	Oil Gravity Corr. API	Gas Gravity	Production Method
Choke Size	Tbg. Press. Flwg. SI	Csg. Press.	24 Hr. Rate →	Oil BBL	Gas MCF	Water BBL	Gas : Oil Ratio	Well Status	

28c. Production - Interval D

Date First Produced	Test Date	Hours Tested	Test Production →	Oil BBL	Gas MCF	Water BBL	Oil Gravity Corr. API	Gas Gravity	Production Method
Choke Size	Tbg. Press. Flwg. SI	Csg. Press.	24 Hr. Rate →	Oil BBL	Gas MCF	Water BBL	Gas : Oil Ratio	Well Status	

29. Disposition of Gas (Sold, used for fuel, vented, etc.)

SOLD

30. Summary of Porous Zones (Include Aquifers):

Show all important zones or porosity and contents thereof: Cored intervals and all drill-stem tests, including depth interval tested, cushion used, time tool open, flowing and shut-in pressures and recoveries.

31. Formation (Log) Markers

Formation	Top	Bottom	Descriptions, Contents, etc.	Name	Top
					Meas. Depth
				T/SALT	660'
				B/SALT	3220'
				T/LAMAR	3430'
				T/BELL CANYON	3460'
				T/CHERRY CANYON	4280'
				T/LOWER CHERRY CANYON	5543'
				T/BRUSHY CANYON	5580'
				T/LOWER BRUSHY CANYON	6926'
				T/BONE SPRING LIME	7178'
				T/AVALON SAND	7288'
				BASE AVALON SAND	7319'

32. Additional remarks (include plugging procedure):

33. Indicate which items have been attached by placing a check in the appropriate boxes:

- ☒ Electrical/Mechanical Logs (1 full set req'd.)
 ☐ Geological Report
 ☐ DST Report
 ☒ Directional Survey
☐ Sundry Notice for plugging and cement verification
☐ Core Analysis
☐ Other

34. I hereby certify that the foregoing and attached information is complete and correct as determined from all available records (see attached instructions)*

Name (please print) Cindi Goodman Title Production ClerkSignature  Date 06/26/2006

Title 18 U.S.C. Section 101 and Title 43 U.S.C. Section 1212, make it a crime for any person knowingly and willfully to make to any department or agency of the United States and false, fictitious or fraudulent statements or representations as to any matter within its jurisdiction.

DISTRICT I
1825 N. French Dr., Hobbs, NM 88240

DISTRICT II
511 South First, Artesia, NM 88210

DISTRICT III
1000 Rio Brazos Rd., Aztec, NM 87410

DISTRICT IV
2040 South Pacheco, Santa Fe, NM 87505

State of New Mexico
Energy, Minerals and Natural Resources Department

Form C-102
Revised March 17, 1999

Submit to Appropriate District Office
State Lease - 4 Copies
Fee Lease - 3 Copies

OIL CONSERVATION DIVISION

2040 South Pacheco
Santa Fe, New Mexico 87504-2088

☐ AMENDED REPORT

WELL LOCATION AND ACREAGE DEDICATION PLAT

API Number 30-015-32928	Pool Code 47545	Pool Name Nash Draw (Delaware/BS/Avalon Sand)
Property Code 001796	Property Name POKER LAKE UNIT	Well Number 204
OGRI No. 001801	Operator Name BEP CO, L.P.	Elevation 3154'

Surface Location

UL or lot No.	Section	Township	Range	Lot 10m	Feet from the	North/South line	Feet from the	East/West line	County
N	7	24 S	30 E		660	SOUTH	1980	WEST	EDDY

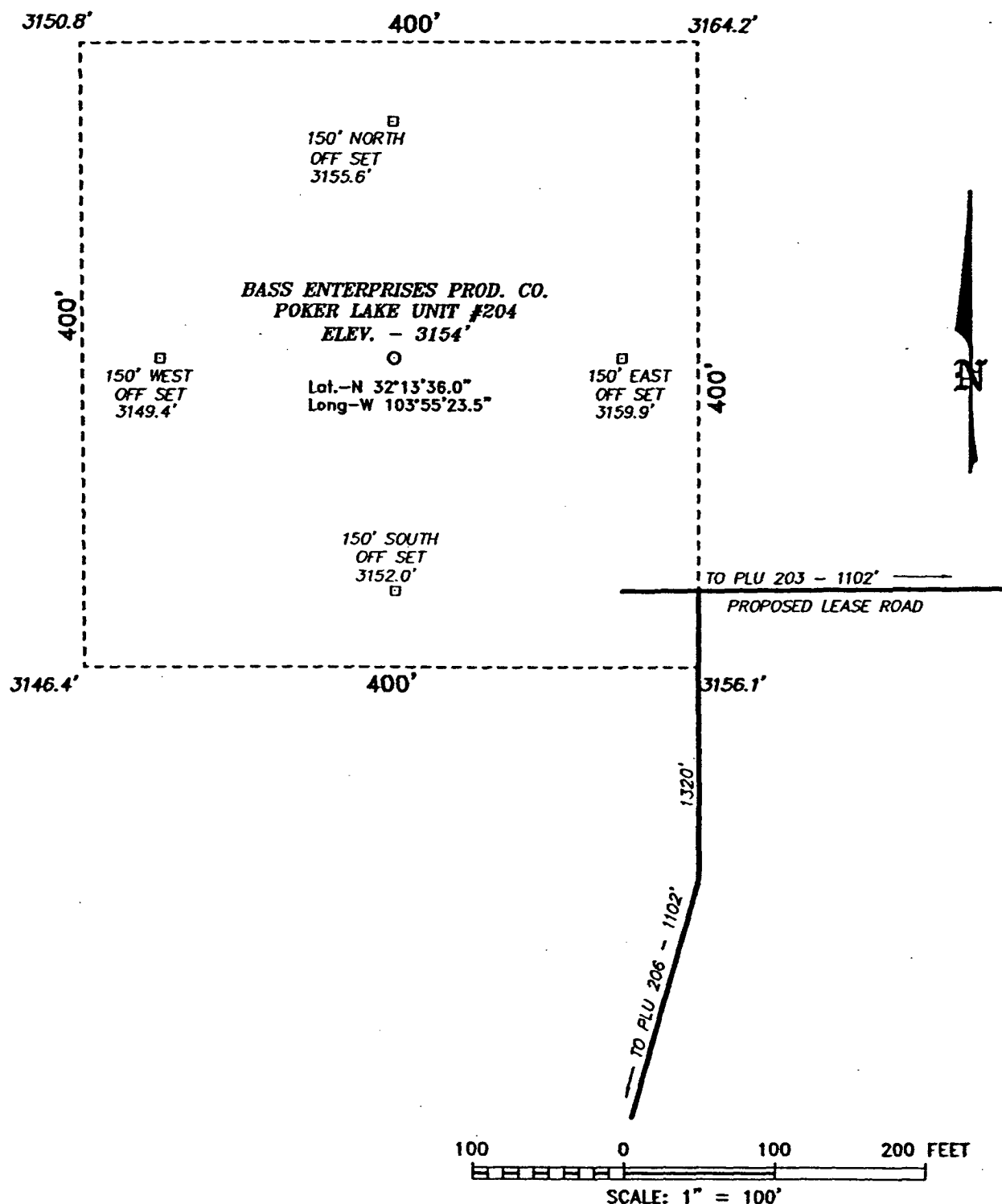
Bottom Hole Location If Different From Surface

UL or lot No.	Section	Township	Range	Lot 10m	Feet from the	North/South line	Feet from the	East/West line	County
Dedicated Acres 40	Joint or Infill I	Consolidation Code	Order No.						

NO ALLOWABLE WILL BE ASSIGNED TO THIS COMPLETION UNTIL ALL INTERESTS HAVE BEEN CONSOLIDATED
OR A NON-STANDARD UNIT HAS BEEN APPROVED BY THE DIVISION

	OPERATOR CERTIFICATION I hereby certify the the information contained herein is true and complete to the best of my knowledge and belief. Signature W.R. DANNELS Printed Name DIVISION DRILLING SUPT. Title 6/16/03 Date	
	SURVEYOR CERTIFICATION I hereby certify that the well location shown on this plat was plotted from field notes of actual surveys made by me or under my supervision, and that the same is true and correct to the best of my belief. MARCH 10, 2003 Date Surveyed Signature Professional Surveyor W.O. No. 3079 Certificate No. Gary L. Jones 7977 PROFESSIONAL LAND SURVEYOR	

SECTION 7, TOWNSHIP 24 SOUTH, RANGE 30 EAST, N.M.P.M.,
EDDY COUNTY, NEW MEXICO.



BASS ENTERPRISES PRODUCTION CO.

REF: POKER LAKE UNIT No. 204 / Well Pad Topo

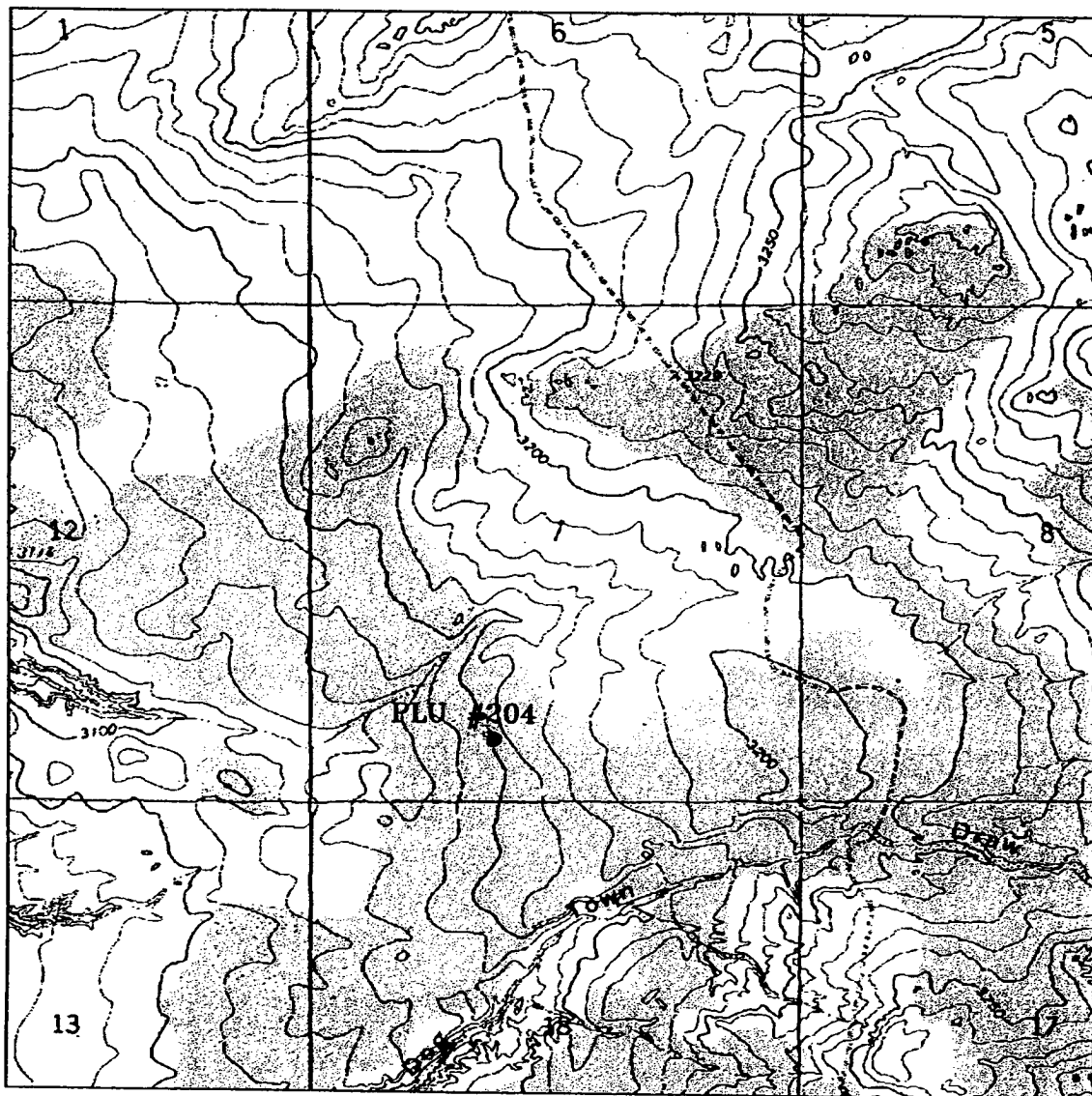
THE POKER LAKE UNIT No. 204 LOCATED 660' FROM
THE SOUTH LINE AND 1980' FROM THE WEST LINE OF
SECTION 7, TOWNSHIP 24 SOUTH, RANGE 30 EAST,
N.M.P.M., EDDY COUNTY, NEW MEXICO.

BASIN SURVEYS P.O. BOX 1786-HOBBS, NEW MEXICO

W.O. Number: 3079 Drawn By: K. GOAD

Date: 03-11-2003 Disk: KJG CD#7 - 3079A.DWG

Survey Date: 03-10-2003 Sheet 1 of 1 Sheets



POKER LAKE UNIT #204
 Located at 660' FSL and 1980' FWL
 Section 7, Township 24 South, Range 30 East,
 N.M.P.M., Eddy County, New Mexico.

**basin
surveys**
 focused on excellence
 in the oilfield

P.O. Box 1786
 1120 N. West County Rd.
 Hobbs, New Mexico 88241
 (505) 393-7316 - Office
 (505) 392-3074 - Fax
basinsurveys.com

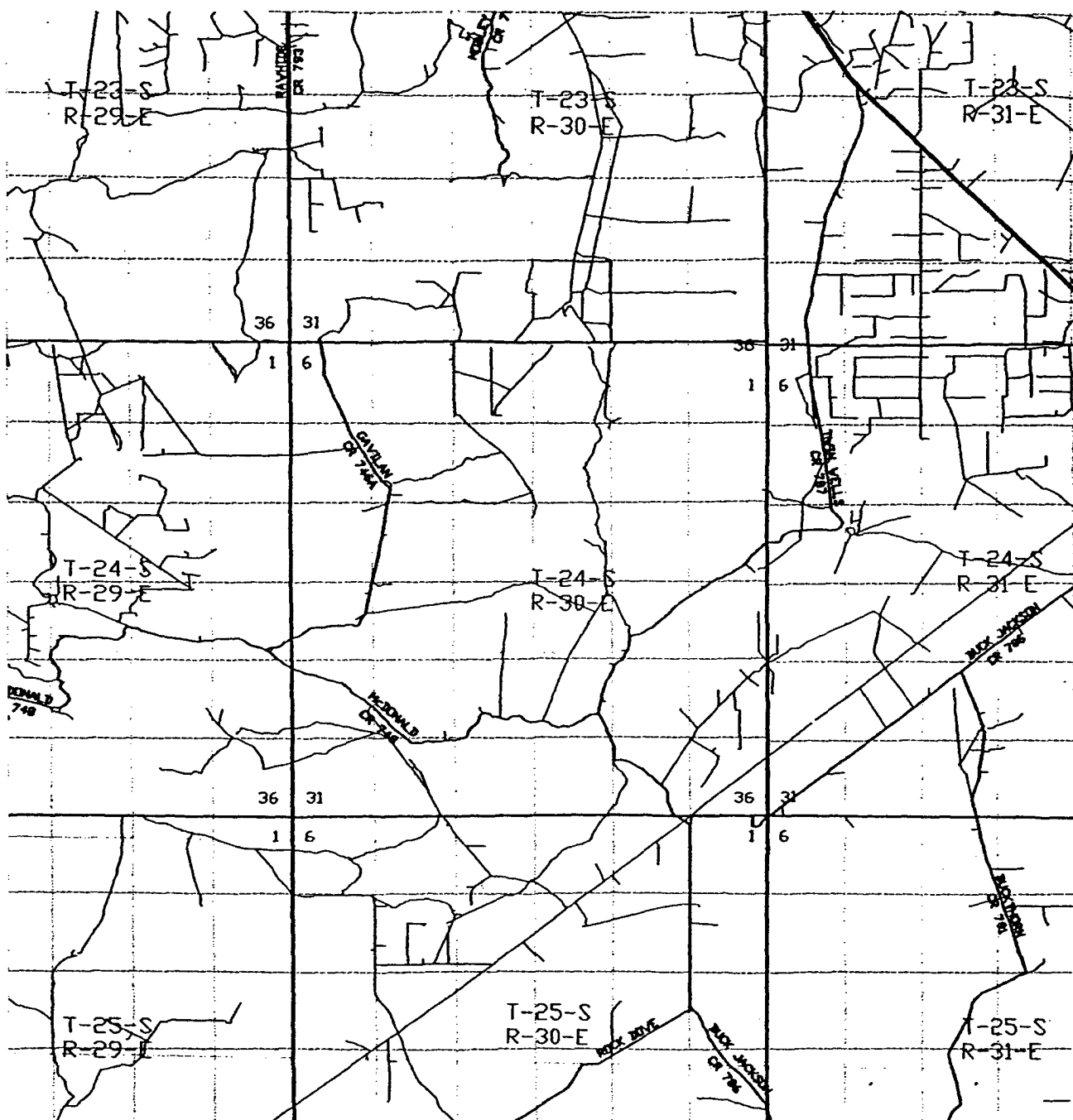
W.O. Number: 3079AA - KJG #7

Survey Date: 03-10-2003

Scale: 1" = 2000'

Date: 03-11-2003

**BASS ENTERPRISES
PRODUCTION CO.**



POKER LAKE UNIT #204

Located at 660' FSL and 1980' FWL
 Section 7, Township 24 South, Range 30 East,
 N.M.P.M., Eddy County, New Mexico.

basin
surveys
 focused on excellence
 in the oilfield

P.O. Box 1786
 1120 N. West County Rd.
 Hobbs, New Mexico 88241
 (505) 393-7316 - Office
 (505) 392-3074 - Fax
 basinsurveys.com

W.O. Number: 3079AA - KJG #7

Survey Date: 03-10-2003

Scale: 1" = 2 MILES

Date: 03-11-2003

**BASS ENTERPRISES
 PRODUCTION CO.**

BEPCO, L.P.
P. O. Box 2760
Midland, Texas 79702

432-683-2277

June 26, 2006

FAX: 432-687-0329

Re: Poker Lake Unit #204
Nash Draw – Del/BS/Av Snd
Eddy County, NM
File: 100-WF: PLU204.CNF


Bureau of Land Management
2909 West Second Street
Roswell, NM 88201

Gentlemen:

BEPCO, L.P. respectfully requests that the Logs and completion data on the above subject well, be held confidential for the maximum period of time.

If you should have any questions, please contact Cindi Goodman at the above letterhead address.

Sincerely,



Cindi Goodman
Production Clerk

cdg

