

UNITED STATES
DEPARTMENT OF THE INTERIOR
BUREAU OF LAND MANAGEMENT

WELL COMPLETION OR RECOMPLETION REPORT AND LOG

FORM APPROVED
OMB NO. 1004-0137
Expires: March 31, 2007

1a. Type of Well ☒ Oil Well ☐ Gas Well ☐ Dry ☐ Other
b. Type of Completion ☒ New Well ☐ Work Over ☐ Deepen ☐ Plug Back ☐ Diff. Resrv.,
Other _____

2. Name of Operator
BEPCO, L.P.

3. Address
P.O. BOX 2760 MIDLAND TX 79702-2760

3.a Phone No. (Include area code)
(432)683-2277

4. Location of Well (Report location clearly and in accordance with Federal requirements)*

At Surface NESW, UL K, 1980 FSL, 1930 FWL, LAT N 32.186611, LON W 103.923222

At top prod. interval reported below SAME

At total depth

14. Date Spudded

04/20/2006

15. Date T.D. Reached

04/30/2006

16. Date Completed

☐ D & A ☒ Ready to Prod.

06/02/2006

18. Total Depth: MD 7500'
TVD

19. Plug Back T.D.: MD 7412'
TVD

20. Depth Bridge Plug Set: MD
TVD

21. Type of Electric & Other Mechanical Logs Run (Submit copy of each)
GR-CLN-LDT; GR-AIT

22. Was well cored? ☒ No ☐ Yes (Submit analysis)
Was DST run? ☒ No ☐ Yes (Submit analysis)
Directional Survey? ☐ No ☒ Yes (Submit copy)

5. Lease Serial No.
NMLC069627

6. If Indian, Allottee or Tribe Name

7. Unit or CA Agreement Name and no.
NMNM71016

8. Lease Name and Well No.

POKER LAKE UNIT 235

9. API Well No.

30-015-34309

10. Field and Pool, or Exploratory

NASH DRAW-DEL/BS/AV SAND

11. Sec., T., R., M., on Block and

Survey or Area SEC 30, T24S, R30E

12. County or Parish

EDDY

13. State

NM

17. Elevations (DF, RKB, RT, GL)*

3164' GL

23. Casing and Liner Record (Report all strings set in well)

Hole Size	Size/Grade	Wt. (#/ft.)	Top (MD)	Bottom (MD)	Stage Cementer Depth	No. of Sk. & Type of Cement	Slurry Vol. (BBL)	Cement Top*	Amount Pulled
12-1/4"	8-5/8"J55	32#	0'	625'		425		0'	
7-7/8"	5-1/2"J55	15.5/17#	0'	7500'		795		1780' TS	

24. Tubing Record

Size	Depth Set (MD)	Packer Depth (MD)	Size	Depth Set (MD)	Packer Depth (MD)	Size	Depth Set (MD)	Packer Depth (MD)
2-7/8"	7385'							

25. Producing Intervals

Formation	Top	Bottom	Perforated Interval	Size	No. Holes	Perf. Status
A) DELAWARE	7132'	7360'	7132'-7144'	0.380	12	PRODUCING
B)			7192'-7204'	0.380	12	PRODUCING
C)			7340'-7360'	0.380	20	PRODUCING
D)						

27. Acid, Fracture, Treatment, Cement Squeeze, Etc.

Depth Interval	Amount and Type of Material
7132' - 7204'	123,706 GALS PW + 10,000# 14/30 LITE PROP
7340' - 7360'	123,432 GALS PW + 10,000# 14/30 LITE PROP

28. Production - Interval A

Date First Produced	Test Date	Hours Tested	Test Production	Oil BBL	Gas MCF	Water BBL	Oil Gravity Corr. API	Gas Gravity	Production Method
6/02/06	6/10/06	24	→	45	185	272			PUMPING
Choice Size	Tbg. Press. Flwg. SI	Csg. Press.	24 Hr. Rate	Oil BBL	Gas MCF	Water BBL	Gas : Oil Ratio	Well Status	
20/64"	SI 350	620	→	45	185	272		PRODUCING	

Production - Interval B

Date First Produced	Test Date	Hours Tested	Test Production	Oil BBL	Gas MCF	Water BBL	Oil Gravity Corr. API	Gas Gravity	Production Method
			→						
Choke Size	Tbg. Press. Flwg. SI	Csg. Press.	24 Hr. Rate	Oil BBL	Gas MCF	Water BBL	Gas : Oil Ratio	Well Status	
			→						

(See Instructions and spaces for additional data on page 2)

28b. Production - Interval C

Date First Produced	Test Date	Hours Tested	Test Production →	Oil BBL	Gas MCF	Water BBL	Oil Gravity Corr. API	Gas Gravity	Production Method
Choke Size	Tbg. Press. Flwg. SI	Csg. Press.	24 Hr. Rate →	Oil BBL	Gas MCF	Water BBL	Gas : Oil Ratio	Well Status	

28c. Production - Interval D

Date First Produced	Test Date	Hours Tested	Test Production →	Oil BBL	Gas MCF	Water BBL	Oil Gravity Corr. API	Gas Gravity	Production Method
Choke Size	Tbg. Press. Flwg. SI	Csg. Press.	24 Hr. Rate →	Oil BBL	Gas MCF	Water BBL	Gas : Oil Ratio	Well Status	

29. Disposition of Gas (Sold, used for fuel, vented, etc.)

SOLD

30. Summary of Porous Zones (Include Aquifers):

Show all important zones or porosity and contents thereof: Cored intervals and all drill-stem tests, including depth interval tested, cushion used, time tool open, flowing and shut-in pressures and recoveries.

31. Formation (Log) Markers

Formation	Top	Bottom	Descriptions, Contents, etc.	Name	Top
					Meas. Depth
				T/SALT	630'
				B/SALT	3214'
				T/LAMAR	3426'
				T/BELL CANYON	2452'
				T/CHERRY CANYON	4282'
				T/LOWER CHERRY CANYON	5530'
				T/BRUSHY CANYON	5600'
				T/LOWER BRUSHY CANYON	6974'
				T/BONE SPRING LIME	7205'
				T/AVALON SAND	7310'
				BASE AVALON SAND	7376'

32. Additional remarks (include plugging procedure):

33. Indicate which items have been attached by placing a check in the appropriate boxes:

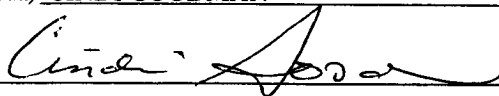
- ☒ Electrical/Mechanical Logs (1 full set req'd.)
 ☐ Geological Report
 ☐ DST Report
 ☒ Directional Survey
☐ Sundry Notice for plugging and cement verification
 ☐ Core Analysis
 ☐ Other

34. I hereby certify that the foregoing and attached information is complete and correct as determined from all available records (see attached instructions)*

Name (please print) CINDI GOODMAN

Title PRODUCTION CLERK

Signature



Date 06/19/2006

Title 18 U.S.C. Section 101 and Title 43 U.S.C. Section 1212, make it a crime for any person knowingly and willfully to make to any department or agency of the United States and false, fictitious or fraudulent statements or representations as to any matter within its jurisdiction.

DISTRICT I
1625 N. French Dr., Hobbs, NM 88240
DISTRICT II
811 South First, Artesia, NM 88210

State of New Mexico
Energy, Minerals and Natural Resources Department

Form C-102
Revised March 17, 1999

Submit to Appropriate District Office
State Lease - 4 Copies
Fee Lease - 3 Copies

DISTRICT III
1000 Rio Brazos Rd., Artec, NM 87410
DISTRICT IV
2040 South Pacheco, Santa Fe, NM 87505

OIL CONSERVATION DIVISION

2040 South Pacheco
Santa Fe, New Mexico 87504-2088

☐ AMENDED REPORT

WELL LOCATION AND ACREAGE DEDICATION PLAT

API Number 30-015-34309	Pool Code 47545	Pool Name NASH DRAW DELAWARE
Property Code 001796	Property Name POKER LAKE UNIT	Well Number 235
OGRID No. 001801	Operator Name BASS ENTERPRISES PRODUCTION COMPANY	Elevation 3163'

Surface Location

UL or lot No.	Section	Township	Range	Lot Idn	Feet from the	North/South line	Feet from the	East/West line	County
K	30	24 S	30 E		1980	SOUTH	1930	WEST	EDDY

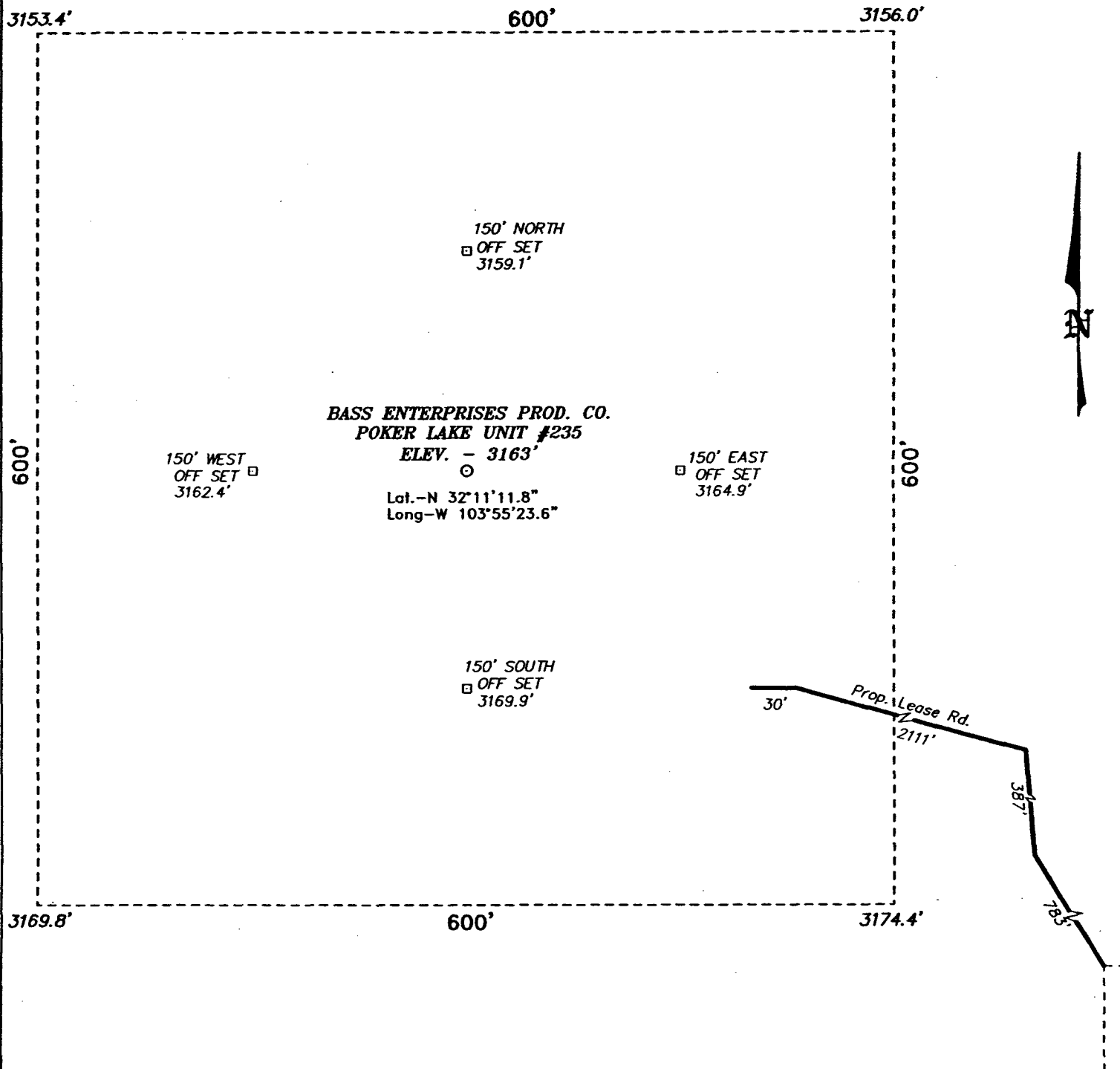
Bottom Hole Location If Different From Surface

UL or lot No.	Section	Township	Range	Lot Idn	Feet from the	North/South line	Feet from the	East/West line	County
Dedicated Acres 40	Joint or Infill N	Consolidation Code	Order No.						

NO ALLOWABLE WILL BE ASSIGNED TO THIS COMPLETION UNTIL ALL INTERESTS HAVE BEEN CONSOLIDATED
OR A NON-STANDARD UNIT HAS BEEN APPROVED BY THE DIVISION

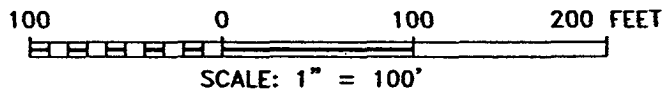
	<p>OPERATOR CERTIFICATION</p> <p>I hereby certify the the information contained herein is true and complete to the best of my knowledge and belief.</p> <p><i>W.R. Dannels</i> Signature W.R. DANNELS Printed Name DIVISION DRILLING SUPT. Title 6-21-05 Date</p> <p>SURVEYOR CERTIFICATION</p> <p>I hereby certify that the well location shown on this plat was plotted from field notes of actual surveys made by me or under my supervision, and that the same is true and correct to the best of my belief.</p> <p>JUNE 06, 2005 Date Surveyed Signature & Seal of Professional Surveyor NEW MEXICO W.D. No. 5476R Certified No. Gary L. Jones 7977 BASIN SURVEYS</p>
--	--------------------------------------------------------------------------------------------------------------------------------------------------------------------------------------------------------------------------------------------------------------------------------------------------------------------------------------------------------------------------------------------------------------------------------------------------------------------------------------------------------------------------------------------------------------------------------------------------------------------------------------------------------------------------------------------------------------------------------------------------

SECTION 30, TOWNSHIP 24 SOUTH, RANGE 30 EAST, N.M.P.M.,
EDDY COUNTY, NEW MEXICO.



DIRECTIONS TO LOCATION:

FROM THE JUNCTION OF CO. RD. 746A AND CO. RD. 748, GO SOUTHEAST FOR 1.3 MILE TO LEAES ROAD; THENCE SOUTHEAST ON LEASE ROAD FOR 0.4 MILE; THENCE WEST ON LEASE ROAD FOR 0.3 MILE TO EXISTING WELL PAD AND PROPOSED LEASE ROAD.



BASS ENTERPRISES PRODUCTION CO.

REF: POKER LAKE UNIT No. 235 / Well Pad Topo

THE POKER LAKE UNIT No. 235 LOCATED 1980' FROM
THE SOUTH LINE AND 1930' FROM THE WEST LINE OF
SECTION 30, TOWNSHIP 24 SOUTH, RANGE 30 EAST,
N.M.P.M., EDDY COUNTY, NEW MEXICO.

BASIN SURVEYS P.O. BOX 1786 - HOBBS, NEW MEXICO

W.O. Number: 5476A

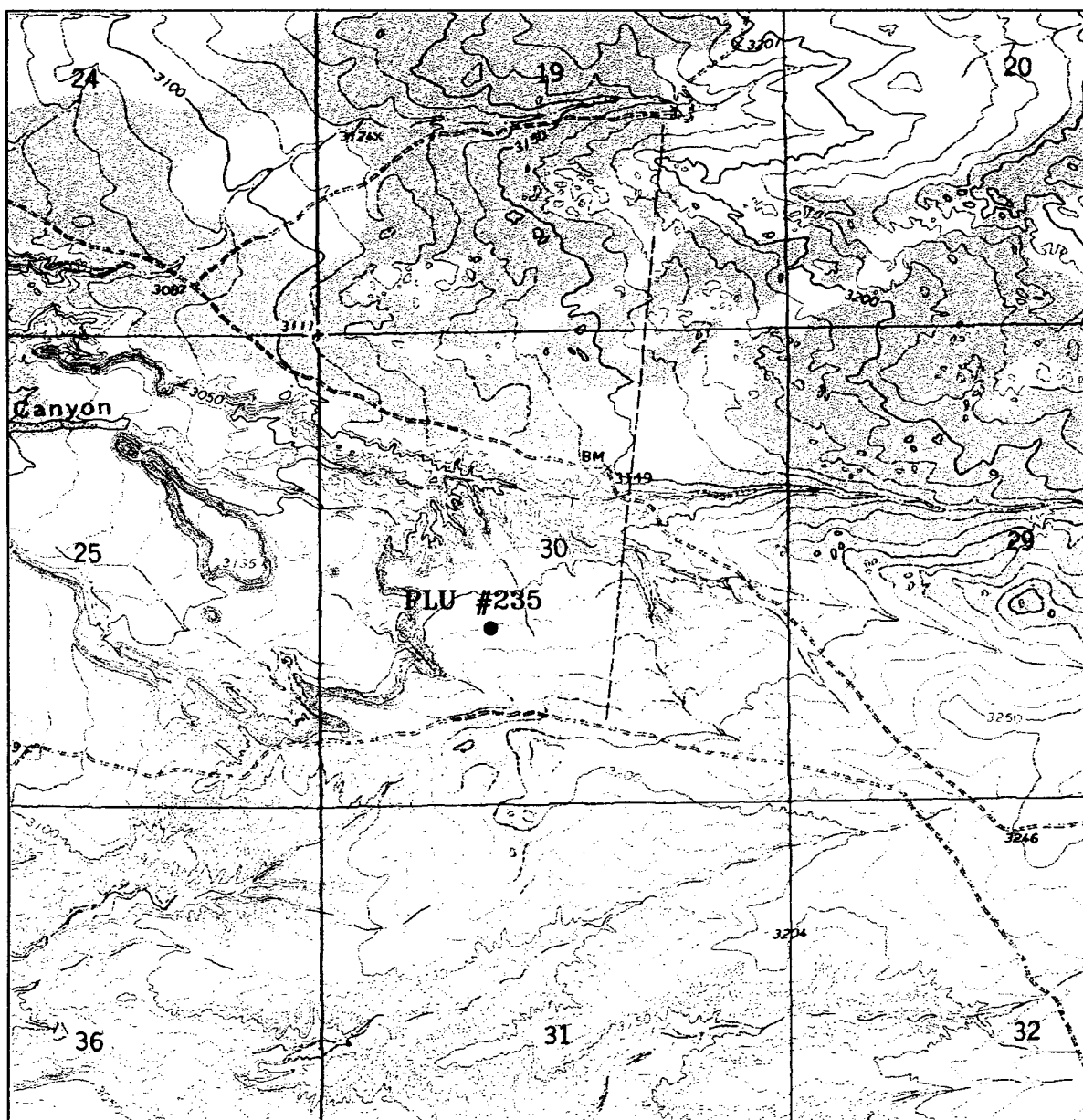
Drawn By: K. GOAD

Date: 06-07-2005

Disk: KJG CD#7 - 5476A DWG

Survey Date: 06-06-2005

Sheet 1 of 1 Sheets



POKER LAKE UNIT #235

Located at 1980' FSL and 1930' FWL
 Section 30, Township 24 South, Range 30 East,
 N.M.P.M., Eddy County, New Mexico.

**basin
surveys**

focused on excellence
in the oilfield

P.O. Box 1786
 1120 N. West County Rd.
 Hobbs, New Mexico 88241
 (505) 393-7316 - Office
 (505) 392-3074 - Fax
 basinsurveys.com

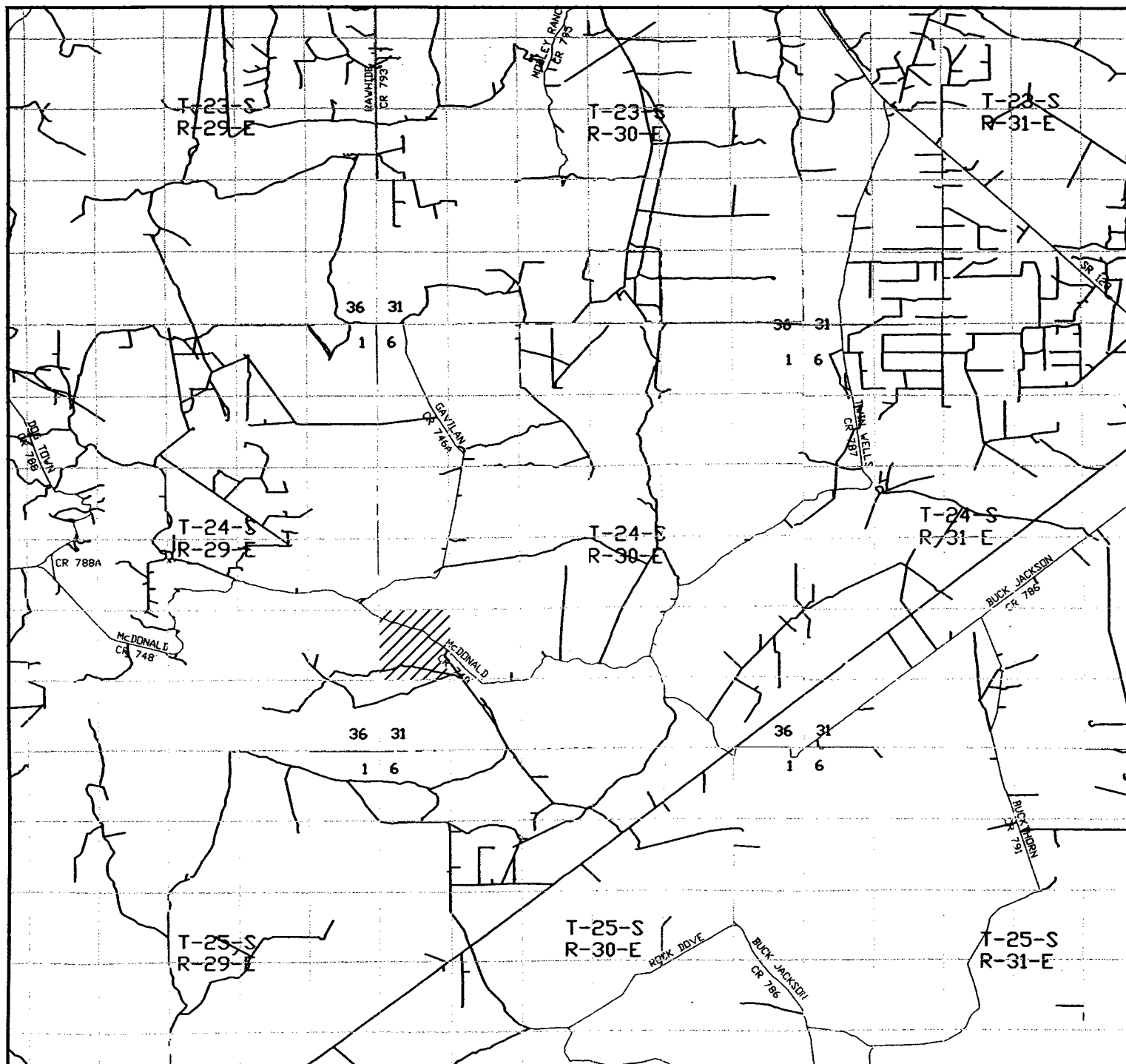
W.O. Number: 5476AA - KJG #7

Survey Date: 06-06-2005

Scale: 1" = 2000'

Date: 06-07-2005

**BASS ENTERPRISES
PRODUCTION CO.**



POKER LAKE UNIT #235

Located at 1980' FSL and 1930' FWL
 Section 30, Township 24 South, Range 30 East,
 N.M.P.M., Eddy County, New Mexico.

basin
surveys

focused on excellence
 in the oilfield

P.O. Box 1786
 1120 N. West County Rd.
 Hobbs, New Mexico 88241
 (505) 393-7316 - Office
 (505) 392-3074 - Fax
 basinsurveys.com

W.O. Number: 5476AA - KJG #7

Survey Date: 06-06-2005

Scale: 1" = 2 MILES

Date: 06-07-2005

BASS ENTERPRISES
PRODUCTION CO.

BEPCO, L.P.
P. O. Box 2760
Midland, Texas 79702

432-683-2277

June 19, 2006

FAX: 432-687-0329

Re: Poker Lake Unit #235
Nash Draw – Del/BS/Av Snd
Eddy County, NM
File: 100-WF: PLU235.CNF

Bureau of Land Management
2909 West Second Street
Roswell, NM 88201

RECEIVED
JUN 23 2006
BUREAU OF LAND MANAGEMENT

Gentlemen:

BEPCO, L.P. respectfully requests that the Logs and completion data on the above subject well, be held confidential for the maximum period of time.

If you should have any questions, please contact Cindi Goodman at the above letterhead address.

Sincerely,



Cindi Goodman
Production Clerk

cdg