

UNITED STATES  
DEPARTMENT OF THE INTERIOR  
BUREAU OF LAND MANAGEMENTFORM APPROVED  
OMB NO. 1004-0137  
Expires: March 31, 2007

## WELL COMPLETION OR RECOMPLETION REPORT AND LOG

- 1a. Type of Well ☒ Oil Well ☐ Gas Well ☐ Dry ☐ Other  
b. Type of Completion ☒ New Well ☐ Work Over ☐ Deepen ☐ Plug Back ☐ Diff. Resvr.,  
Other \_\_\_\_\_

2. Name of Operator  
Bass Enterprises Production Co.

3. Address  
P. O. Box 2760 Midland TX 79702

3.a Phone No. (Include area code)  
(432)683-2277

4. Location of Well (Report location clearly and in accordance with Federal requirements)\*

At Surface NSW, UL L, 1830 FSL, 760 FWL, LAT N 32.215417, LON W 106.000000

At top prod. interval reported below SAME

At total depth

14. Date Spudded  
04/02/2006

15. Date T.D. Reached  
04/19/2006

16. Date Completed  
☐ D & A ☒ Ready to Prod.  
05/19/2006

18. Total Depth: MD 7630'  
TVD

19. Plug Back T.D.: MD 7544'  
TVD

20. Depth Bridge Plug Set: MD  
TVD

21. Type of Electric & Other Mechanical Logs Run (Submit copy of each)  
GR-CLN-LDT; GR-AIT

22. Was well cored? ☒ No ☐ Yes (Submit analysis)  
Was DST run? ☒ No ☐ Yes (Submit analysis)  
Directional Survey? ☐ No ☒ Yes (Submit copy)

## 23. Casing and Liner Record (Report all strings set in well)

Hole Size	Size/Grade	Wt. (#/ft.)	Top (MD)	Bottom (MD)	Stage Cementer Depth	No. of Sk. & Type of Cement	Slurry Vol. (BBL)	Cement Top*	Amount Pulled
12-1/4"	8-5/8"K55	32#	0'	871'		845		0'	
7-7/8"	5-1/2"J55	15.5/17#	0'	7630'		1100		3900' TS	

## 24. Tubing Record

Size	Depth Set (MD)	Packer Depth (MD)	Size	Depth Set (MD)	Packer Depth (MD)	Size	Depth Set (MD)	Packer Depth (MD)
2-7/8"	7513'							

## 25. Producing Intervals

Formation	Top	Bottom	Perforated Interval	Size	No. Holes	Perf. Status
A) DELAWARE	7188'	7500'	7188'-7194'	0.380	6	PRODUCING
B)			7258'-7286'	0.380	8	PRODUCING
C)			7480'-7500'	0.380	20	PRODUCING
D)						

## 27. Acid, Fracture, Treatment, Cement Squeeze, Etc.

Depth Interval	Amount and Type of Material
7188' - 7286'	123,047 GALS PW + 10,052# 14/30 LITE PROP
7480' - 7500'	123,081 GALS PW + 10,036# 14/30 LITE PROP

## 28. Production - Interval A

Date First Produced	Test Date	Hours Tested	Test Production	Oil BBL	Gas MCF	Water BBL	Oil Gravity Corr. API	Gas Gravity	Production Method
5/19/06	5/28/06	24	→	130	350	261			PUMPING
Choke Size	Tbg. Press. Flwg.	Csg. Press.	24 Hr. Rate	Oil BBL	Gas MCF	Water BBL	Gas : Oil Ratio	Well Status	
14/64"	SI 250	1300	→	130	350	261		PRODUCING	

## Production - Interval B

Date First Produced	Test Date	Hours Tested	Test Production	Oil BBL	Gas MCF	Water BBL	Oil Gravity Corr. API	Gas Gravity	Production Method
			→						
Choke Size	Tbg. Press. Flwg.	Csg. Press.	24 Hr. Rate	Oil BBL	Gas MCF	Water BBL	Gas : Oil Ratio	Well Status	
	SI		→						

(See Instructions and spaces for additional data on page 2)

## 28b. Production - Interval C

Date First Produced	Test Date	Hours Tested	Test Production →	Oil BBL	Gas MCF	Water BBL	Oil Gravity Corr. API	Gas Gravity	Production Method
Choke Size	Tbg. Press. Flwg. SI	Csg. Press.	24 Hr. Rate →	Oil BBL	Gas MCF	Water BBL	Gas : Oil Ratio	Well Status	

## 28c. Production - Interval D

Date First Produced	Test Date	Hours Tested	Test Production →	Oil BBL	Gas MCF	Water BBL	Oil Gravity Corr. API	Gas Gravity	Production Method
Choke Size	Tbg. Press. Flwg. SI	Csg. Press.	24 Hr. Rate →	Oil BBL	Gas MCF	Water BBL	Gas : Oil Ratio	Well Status	

## 29. Disposition of Gas (Sold, used for fuel, vented, etc.)

SOLD

## 30. Summary of Porous Zones (Include Aquifers):

Show all important zones or porosity and contents thereof: Cored intervals and all drill-stem tests, including depth interval tested, cushion used, time tool open, flowing and shut-in pressures and recoveries.

## 31. Formation (Log) Markers

Formation	Top	Bottom	Descriptions, Contents, etc.	Name	Top
					Meas. Depth
				T/SALT	807'
				B/SALT	3326'
				T/LAMAR	3540'
				T/BELL CANYON	3573'
				T/CHERRY CANYON	4424'
				T/LOWER CHERRY CANYON	5685'
				T/BRUSHY CANYON	5714'
				T/LOWER BRUSHY CANYON	7099'
				T/BONE SPRING LIME	7368'
				T/AVALON SAND	7460'
				BASE AVALON SAND	7516'

## 32. Additional remarks (include plugging procedure):

## 33. Indicate which items have been attached by placing a check in the appropriate boxes:

- ☒ Electrical/Mechanical Logs (1 full set req'd.)   
 ☐ Geological Report   
 ☐ DST Report   
 ☒ Directional Survey  
☐ Sundry Notice for plugging and cement verification   
☐ Core Analysis   
☐ Other

## 34. I hereby certify that the foregoing and attached information is complete and correct as determined from all available records (see attached instructions)\*

Name (please print) Cindi Goodman Title Production ClerkSignature  Date 06/02/2006

Title 18 U.S.C. Section 101 and Title 43 U.S.C. Section 1212, make it a crime for any person knowingly and willfully to make to any department or agency of the United States and false, fictitious or fraudulent statements or representations as to any matter within its jurisdiction.

DISTRICT I  
1625 N. French Dr., Hobbs, NM 88240

DISTRICT II  
811 South First, Artesia, NM 88210

DISTRICT III  
1000 Rio Brazos Rd., Aztec, NM 87410

DISTRICT IV  
2040 South Pacheco, Santa Fe, NM 87505

State of New Mexico  
Energy, Minerals and Natural Resources Department

OIL CONSERVATION DIVISION

2040 South Pacheco  
Santa Fe, New Mexico 87504-2088

RECEIVED

JUN - 9 2005  
SUBMITTED TO APPROPRIATE DISTRICT OFFICE

Form C-102  
Revised March 17, 1999

State Lease - 4 Copies  
Fee Lease - 3 Copies

☐ AMENDED REPORT

WELL LOCATION AND ACREAGE DEDICATION PLAT

API Number 30-015-34463	Pool Code 47545	Pool Name NASH DRAW - DELAWARE/BONE SPRING/AVALON SAND
Property Code 001796	Property Name POKER LAKE UNIT	Well Number 260
OGRID No. 001801	Operator Name BASS ENTERPRISES PRODUCTION COMPANY	Elevation 3231'

Surface Location

UL or lot No.	Section	Township	Range	Lot Idn	Feet from the	North/South line	Feet from the	East/West line	County
L	17	24 S	30 E		1830	SOUTH	760	WEST	EDDY

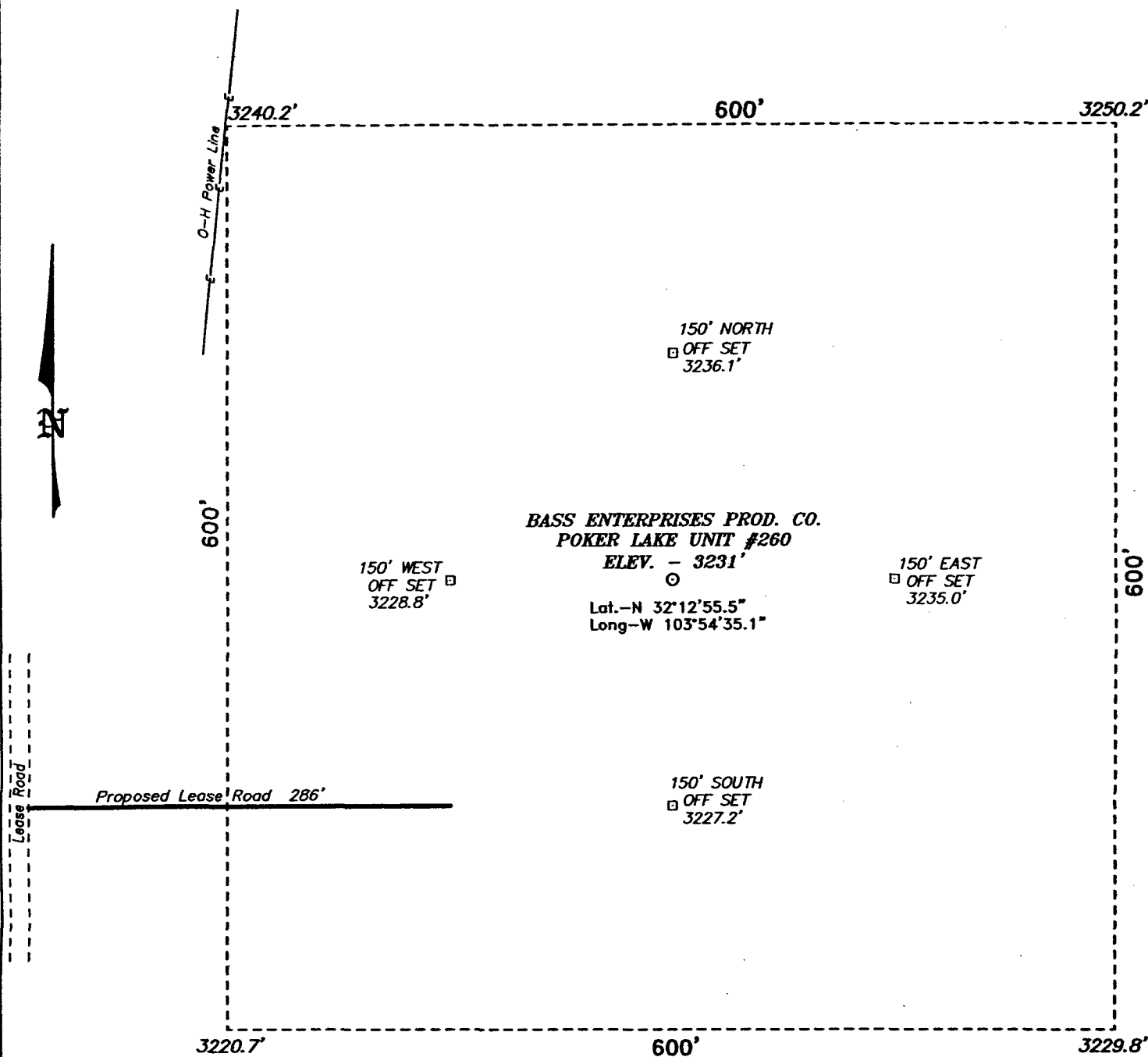
Bottom Hole Location If Different From Surface

UL or lot No.	Section	Township	Range	Lot Idn	Feet from the	North/South line	Feet from the	East/West line	County
Dedicated Acres 40	Joint or Infill N	Consolidation Code	Order No.						

NO ALLOWABLE WILL BE ASSIGNED TO THIS COMPLETION UNTIL ALL INTERESTS HAVE BEEN CONSOLIDATED  
OR A NON-STANDARD UNIT HAS BEEN APPROVED BY THE DIVISION

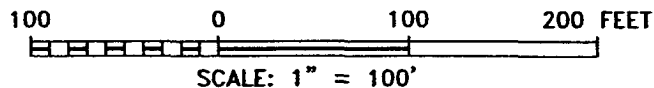
	<p><b>OPERATOR CERTIFICATION</b></p> <p>I hereby certify the the information contained herein is true and complete to the best of my knowledge and belief.</p> <p><i>W.R. Dannels</i> Signature W.R. DANNELS Printed Name DIVISION DRILLING SUPT. Title 9/30/05 Date</p> <p><b>SURVEYOR CERTIFICATION</b></p> <p>I hereby certify that the well location shown on this plat was plotted from field notes of actual surveys made by me or under my supervision, and that the same is true and correct to the best of my belief.</p> <p>AUGUST 20, 2005 Date Surveyed Signature &amp; Seal of Professional Surveyor Professional Surveyor No. 5708 Certificate No. 5708 Jones 7977 BASIN SURVEYS</p>
--	--

**SECTION 17, TOWNSHIP 24 SOUTH, RANGE 30 EAST, N.M.P.M.,  
EDDY COUNTY, NEW MEXICO.**



**DIRECTIONS TO LOCATION:**

FROM THE JUNCTION OF CO. R. 793 AND STATE HWY 128, GO SOUTH ON 793 FOR APPROX. 4.0 MILES TO LEASE ROAD; THENCE EAST ON LEASE ROAD FOR 0.25 MILE; THENCE SOUTH 0.9 MILE; THENCE EAST 0.3 MILE; THENCE SOUTHERLY FOR APPROX. 4.0 MILES TO PROPOSED LEASE ROAD.



**BASS ENTERPRISES PRODUCTION CO.**

REF: POKER LAKE UNIT No. 260 / Well Pad Topo

THE POKER LAKE UNIT No. 260 LOCATED 1830' FROM  
THE SOUTH LINE AND 760' FROM THE WEST LINE OF  
SECTION 17, TOWNSHIP 24 SOUTH, RANGE 30 EAST,

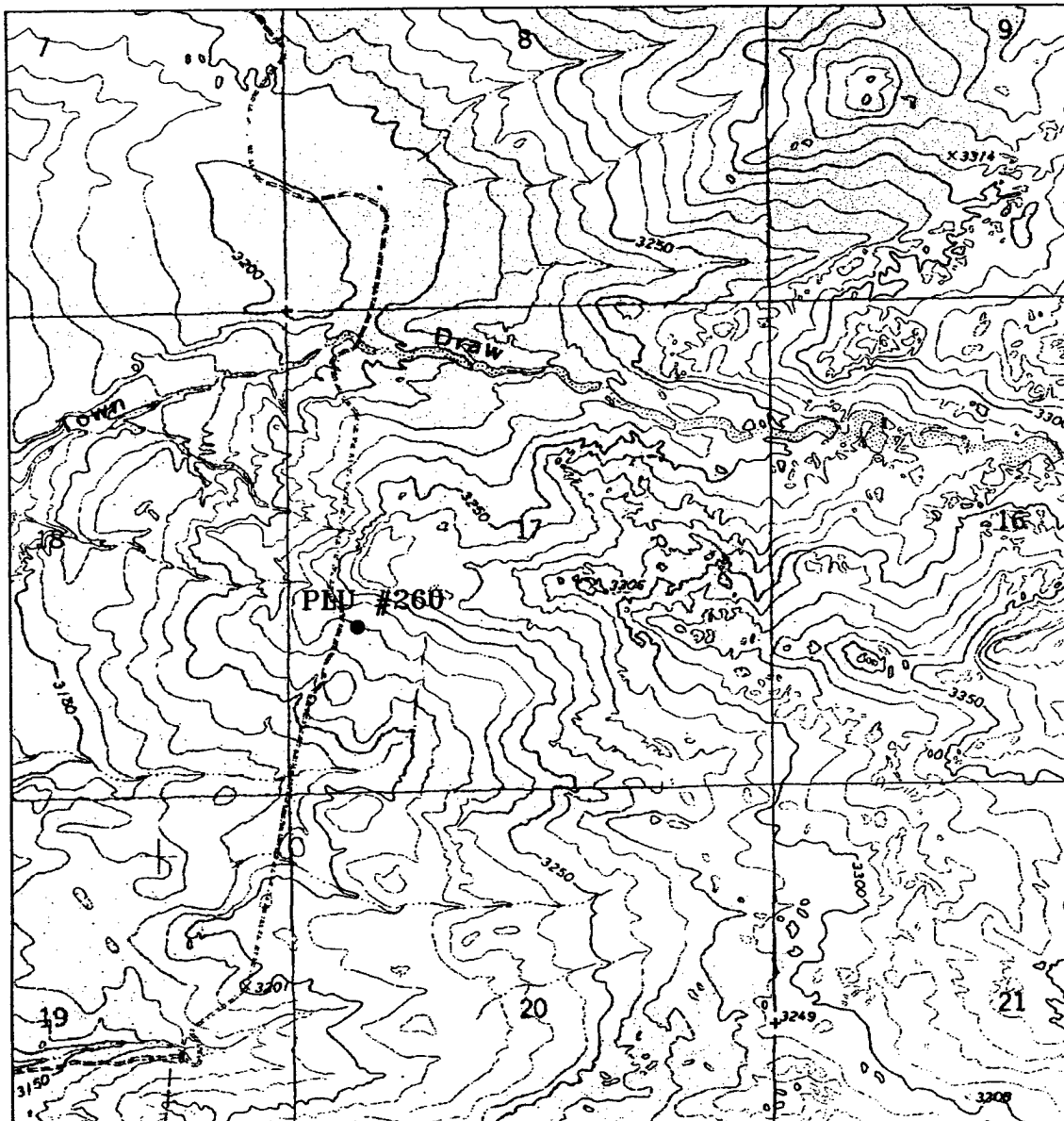
N.M.P.M., EDDY COUNTY, NEW MEXICO.

**BASIN SURVEYS** P.O. BOX 1786-HOBBS, NEW MEXICO

W.O. Number: 5709

Drawn By: K. GOAD

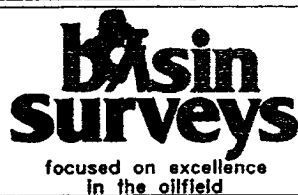
Survey Date: 08-20-2005 Sheet 1 of 1 Sheets



# **POKER LAKE UNIT #260**

Located at 1830' FSL and 760' FWL

Section 17, Township 24 South, Range 30 East,  
N.M.P.M., Eddy County, New Mexico.



P.O. Box 1786  
1120 N. West County Rd.  
Hobbs, New Mexico 88241  
(505) 393-7316 - Office  
(505) 392-3074 - Fax  
basinsurveys.com

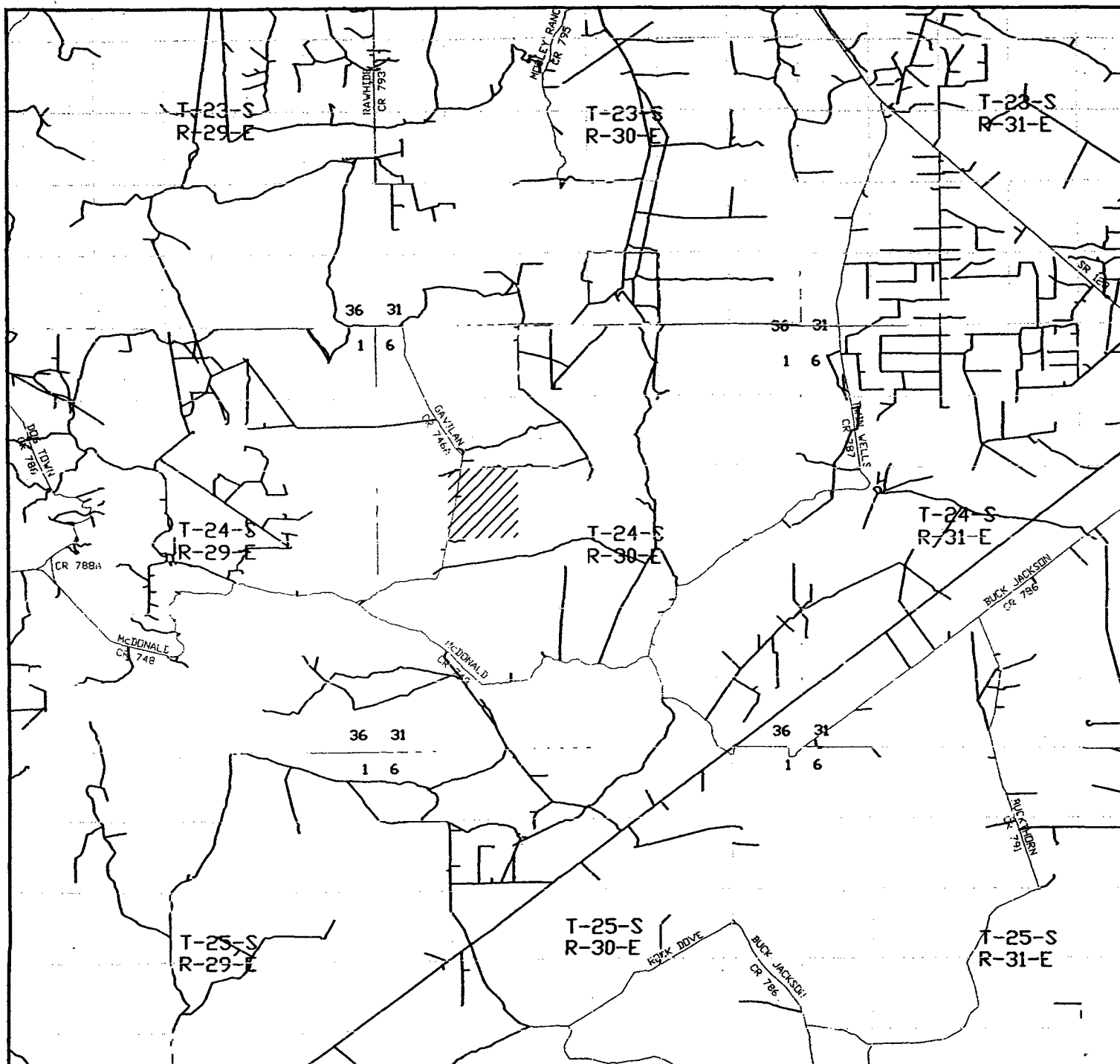
W.O. Number: 5709AA - KJG #7

Survey Date: 08-20-2005

Scale: 1" = 2000'

Date: 08-22-2005

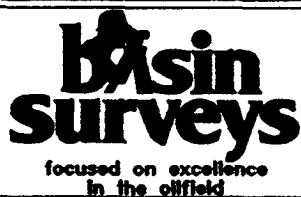
**BASS ENTERPRISES  
PRODUCTION CO.**



# **POKER LAKE UNIT #260**

Located at 1830' FSL and 760' FWL

Section 17, Township 24 South, Range 30 East,  
N.M.P.M., Eddy County, New Mexico.



P.O. Box 1786  
1120 N. West County Rd.  
Hobbs, New Mexico 88241  
(505) 393-7316 - Office  
(505) 392-3074 - Fax  
basinsurveys.com

W.O. Number: 5709AA - KJG #7

Survey Date: 08-20-2005

Scale: 1" = 2 MILES

Date: 08-22-2005

**BASS ENTERPRISES  
PRODUCTION CO.**



**BEPCO, L.P.**  
P. O. Box 2760  
Midland, Texas 79702

432-683-2277

June 2, 2006

FAX: 432-687-0329

Re: Poker Lake Unit #260  
Nash Draw – Del/BS/Av Snd  
Eddy County, NM  
File: 100-WF: PLU260.CNF

Bureau of Land Management  
2909 West Second Street  
Roswell, NM 88201

Gentlemen:

Bass Enterprises Production Co. respectfully requests that the Logs and completion data on the above subject well, be held confidential for the maximum period of time.

If you should have any questions, please contact Cindi Goodman at the above letterhead address.

Sincerely,



Cindi Goodman  
Production Clerk

cdg