

UNITED STATES
DEPARTMENT OF THE INTERIOR
BUREAU OF LAND MANAGEMENT

WELL COMPLETION OR RECOMPLETION REPORT AND LOG

FORM APPROVED
OMB NO. 1004-0137
Expires: March 31, 2007

1a. Type of Well ☒ Oil Well ☐ Gas Well ☐ Dry ☐ Other
b. Type of Completion ☒ New Well ☐ Work Over ☐ Deepen ☐ Plug Back ☐ Diff. Resvr.,
Other _____

2. Name of Operator
BEPCO, L. P.

3. Address
P. O. Box 2760 Midland TX 79702

3.a Phone No. (Include area code)
(432)683-2277

4. Location of Well (Report location clearly and in accordance with Federal requirements)*

At Surface NWSW, UL E, 1805 FNL, 660 FWL, LAT N 32.205417, LON W 103.910056

At top prod. interval reported below SAME

At total depth

14. Date Spudded
05/02/2006

15. Date T.D. Reached
05/14/2006

16. Date Completed
☐ D & A ☒ Ready to Prod.
06/14/2006

18. Total Depth: MD 7638'
TVD

19. Plug Back T.D.: MD 7575'
TVD

20. Depth Bridge Plug Set: MD
TVD

21. Type of Electric & Other Mechanical Logs Run (Submit copy of each)
GR-CLN-LDT; GR-AIT

22. Was well cored? ☒ No ☐ Yes (Submit analysis)
Was DST run? ☒ No ☐ Yes (Submit analysis)
Directional Survey? ☐ No ☒ Yes (Submit copy)

23. Casing and Liner Record (Report all strings set in well)

Hole Size	Size/Grade	Wt. (#/ft.)	Top (MD)	Bottom (MD)	Stage Cementer Depth	No. of Sk. & Type of Cement	Slurry Vol. (BBL)	Cement Top*	Amount Pulled
12-1/4"	8-5/8"J55	32#	0'	870'		505		0'	
7-7/8"	5-1/2"J55	15.5/17#	0'	7634'		1040		3220' TS	

24. Tubing Record

Size	Depth Set (MD)	Packer Depth (MD)	Size	Depth Set (MD)	Packer Depth (MD)	Size	Depth Set (MD)	Packer Depth (MD)
2-7/8"	7388'							

25. Producing Intervals

26. Perforation Record

Formation	Top	Bottom	Perforated Interval	Size	No. Holes	Perf. Status
A) DELAWARE	7175'	7346'	7175'-7180'	0.380	5	PRODUCING
B)			7264'-7270'	0.380	6	PRODUCING
C)			7336'-7346'	0.380	10	PRODUCING
D)						

27. Acid, Fracture, Treatment, Cement Squeeze, Etc.

Depth Interval	Amount and Type of Material
7175' - 7346'	122,784 GALS PW + 9,946# 14/30 LITE PROP

28. Production - Interval A

Date First Produced	Test Date	Hours Tested	Test Production	Oil BBL	Gas MCF	Water BBL	Oil Gravity Corr. API	Gas Gravity	Production Method
6/14/06	6/22/06	24	→	25	129	354			PUMPING
Choice Size	Tbg. Press. Flwg. SI	Csg. Press.	24 Hr. Rate	Oil BBL	Gas MCF	Water BBL	Gas : Oil Ratio	Well Status	
14/64"	SI 350	500	→	25	129	354		PRODUCING	

Production - Interval B

Date First Produced	Test Date	Hours Tested	Test Production	Oil BBL	Gas MCF	Water BBL	Oil Gravity Corr. API	Gas Gravity	Production Method
			→						
Choke Size	Tbg. Press. Flwg. SI	Csg. Press.	24 Hr. Rate	Oil BBL	Gas MCF	Water BBL	Gas : Oil Ratio	Well Status	
			→						

(See Instructions and spaces for additional data on page 2)

28b. Production - Interval C

Date First Produced	Test Date	Hours Tested	Test Production →	Oil BBL	Gas MCF	Water BBL	Oil Gravity Corr. API	Gas Gravity	Production Method
Choke Size	Tbg. Press. Flwg. SI	Csg. Press.	24 Hr. Rate →	Oil BBL	Gas MCF	Water BBL	Gas : Oil Ratio	Well Status	

28c. Production - Interval D

Date First Produced	Test Date	Hours Tested	Test Production →	Oil BBL	Gas MCF	Water BBL	Oil Gravity Corr. API	Gas Gravity	Production Method
Choke Size	Tbg. Press. Flwg. SI	Csg. Press.	24 Hr. Rate →	Oil BBL	Gas MCF	Water BBL	Gas : Oil Ratio	Well Status	

29. Disposition of Gas (Sold, used for fuel, vented, etc.)

SOLD

30. Summary of Porous Zones (Include Aquifers):

Show all important zones or porosity and contents thereof: Cored intervals and all drill-stem tests, including depth interval tested, cushion used, time tool open, flowing and shut-in pressures and recoveries.

31. Formation (Log) Markers

Formation	Top	Bottom	Descriptions, Contents, etc.	Name	Top
					Meas. Depth
				T/SALT	900'
				B/SALT	3300'
				T/LAMAR	3513'
				T/BELL CANYON	3540'
				T/CHERRY CANYON	4406'
				T/LOWER CHERRY CANYON	5667'
				T/BRUSHY CANYON	5730'
				T/LOWER BRUSHY CANYON	7092'
				T/BONE SPRING LIME	7366'
				T/AVALON SAND	7478'
				BASE AVALON SAND	7514'

32. Additional remarks (include plugging procedure):

33. Indicate which items have been attached by placing a check in the appropriate boxes:

- ☒ Electrical/Mechanical Logs (1 full set req'd.)
 ☐ Geological Report
 ☐ DST Report
 ☒ Directional Survey
☐ Sundry Notice for plugging and cement verification
☐ Core Analysis
☐ Other

34. I hereby certify that the foregoing and attached information is complete and correct as determined from all available records (see attached instructions)*

Name (please print) Cindi GoodmanTitle Production Clerk

Signature

Date 06/26/2006

Title 18 U.S.C. Section 101 and Title 43 U.S.C. Section 1212, make it a crime for any person knowingly and willfully to make to any department or agency of the United States and false, fictitious or fraudulent statements or representations as to any matter within its jurisdiction.

DISTRICT I
1825 N. French Dr., Hobbs, NM 88240
DISTRICT II
811 South First, Artesia, NM 88210

DISTRICT III
1000 Rio Brazos Rd., Aztec, NM 87410

DISTRICT IV
2040 South Pacheco, Santa Fe, NM 87505

State of New Mexico
Energy, Minerals and Natural Resources Department

Form C-102
Revised March 17, 1999

Submit to Appropriate District Office
State Lease - 4 Copies
Fee Lease - 3 Copies

OIL CONSERVATION DIVISION

2040 South Pacheco
Santa Fe, New Mexico 87504-2088

☐ AMENDED REPORT

WELL LOCATION AND ACREAGE DEDICATION PLAT

API Number 30-015-34467	Pool Code 47545	Pool Name NASH DRAW - DELAWARE
Property Code 001796	Property Name POKER LAKE UNIT	Well Number 247
OGMD No. 001801	Operator Name BEPCO, L.P.	Elevation 3213'

Surface Location

UL or lot No.	Section	Township	Range	Lot Idn	Feet from the	North/South line	Feet from the	East/West line	County
E	20	24-S	30-E		1805	NORTH	660	WEST	EDDY

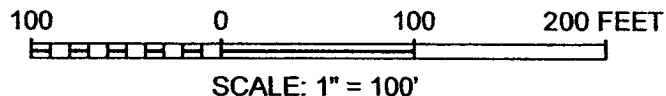
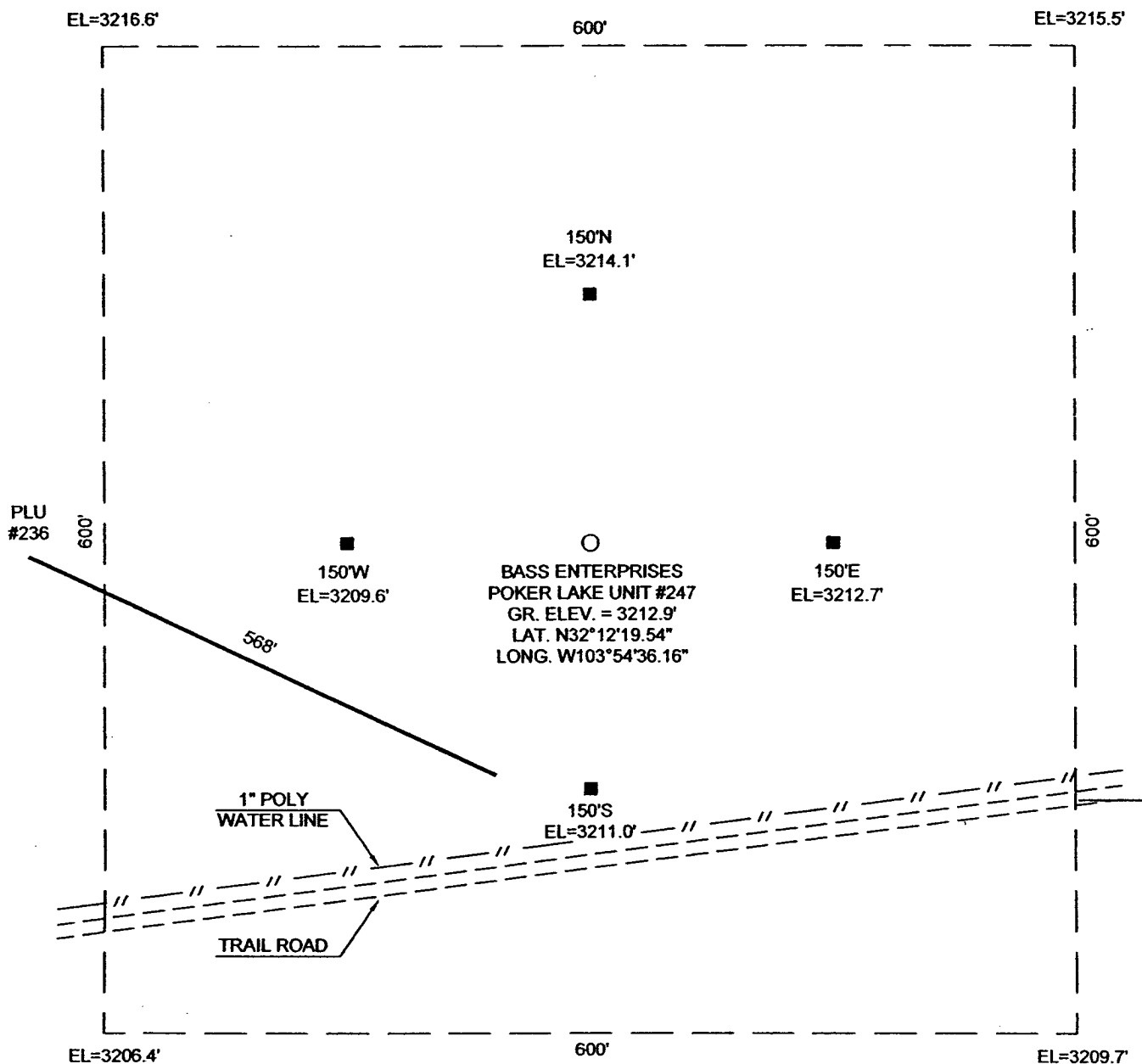
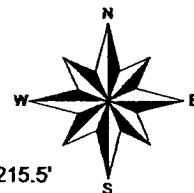
Bottom Hole Location If Different From Surface

UL or lot No.	Section	Township	Range	Lot Idn	Feet from the	North/South line	Feet from the	East/West line	County
Dedicated Acres 40	Joint or Infill N	Consolidation Code	Order No.						

NO ALLOWABLE WILL BE ASSIGNED TO THIS COMPLETION UNTIL ALL INTERESTS HAVE BEEN CONSOLIDATED
OR A NON-STANDARD UNIT HAS BEEN APPROVED BY THE DIVISION

	<p>OPERATOR CERTIFICATION</p> <p>I hereby certify the the information contained herein is true and complete to the best of my knowledge and belief.</p> <p><i>W.R. Dannels</i> Signature W.R. DANNELS Printed Name DIVISION DRILLING SUPT. Title 9/30/05 Date</p> <p>SURVEYOR CERTIFICATION</p> <p>I hereby certify that the well location shown on this plat was plotted from field notes of actual surveys made by me or under my supervision and that the same is true and correct to the best of my belief.</p> <p> Date Surveyed Signature & Seal Professional Surveyor W.O. No. 5640 Certificate No. Gary L. Jones 7977 BASIN SURVEYS</p>
--	---

SECTION 20, TOWNSHIP 24 SOUTH, RANGE 30 EAST, N.M.P.M.
EDDY COUNTY, NEW MEXICO



DIRECTIONS TO LOCATION:

FROM THE JUNCTION OF STATE HWY. 28 AND RAWHIDE ROAD, GO SOUTH 3.8 MILES, THEN EAST FOR 0.2 MILES, THEN SOUTH FOR 0.9 MILES, THEN EAST FOR 0.2 MILES, THEN SOUTH FOR 5.3 MILES TO THE WELL PAD FOR PLU # 236 THEN SOUTHEASTERLY 0.1 MILES TO THE PROPOSED PAD OF PLU #247

BASIN SURVEYS P.O. BOX 1786 -HOBBS, NEW MEXICO

W.O. Number. 5640 Drawn By: S.STANFIELD

Date: 7-29-2005 Disk: C:\DRAWINGS\BASS\BASS5640-1

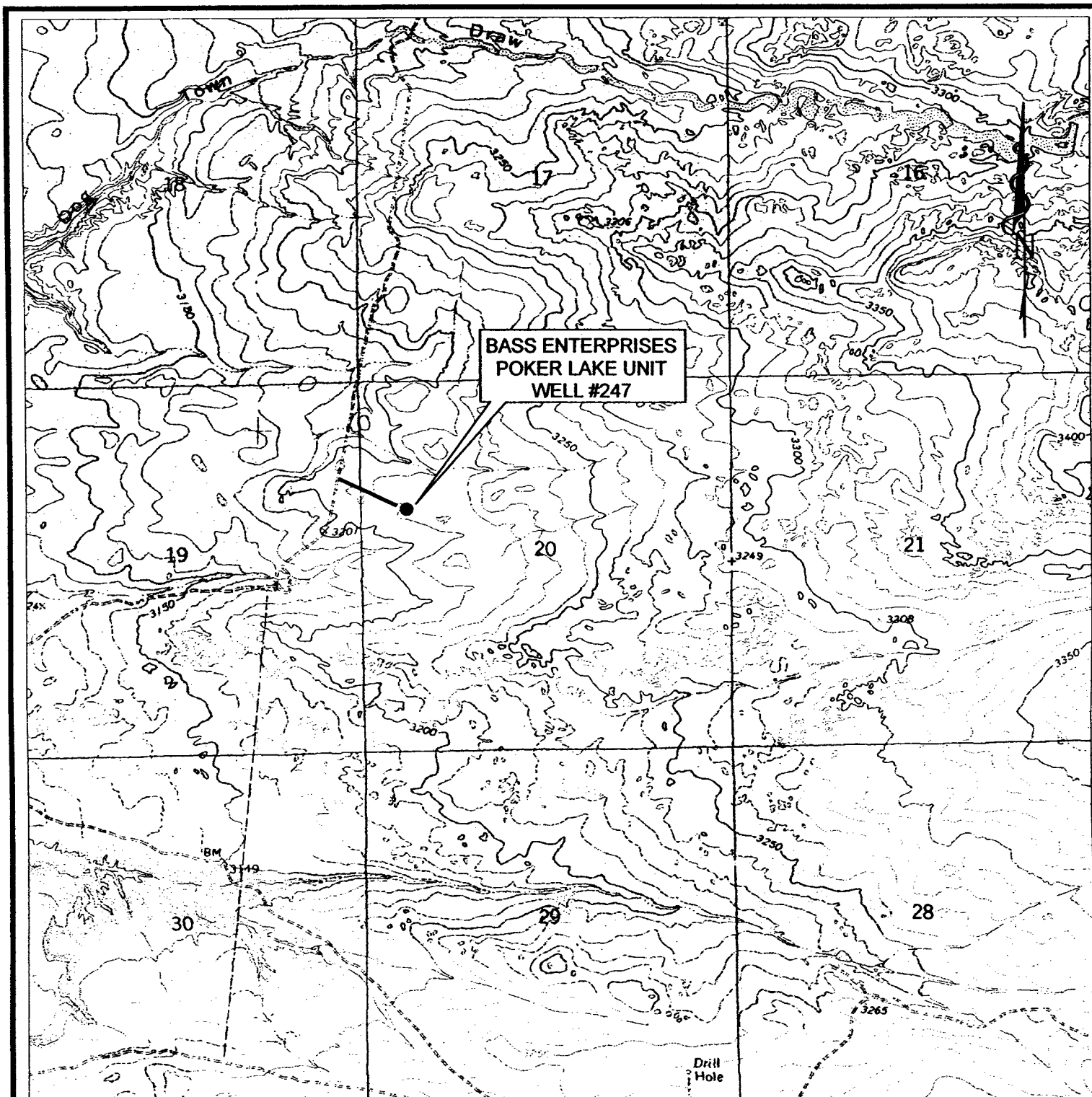
BASS ENTERPRISES PRODUCTION COMPANY

POKER LAKE UNIT WELL No. 247 / WELL PAD TOPO

POKER LAKE UNIT No. 247 LOCATED
1805' F.N.L. AND 660' F.W.L., SECTION 20,
TOWNSHIP 24 SOUTH, RANGE 30 EAST, N.M.P.M.
EDDY COUNTY, NEW MEXICO

Survey Date: 7-26-2005

Sheet 1 of 1 Sheets



BASS ENTERPRISES POKER LAKE UNIT #247
 1805' F.N.L. & 660' F.W.L. SECTION 20,
 TOWNSHIP 24 SOUTH, RANGE 30 EAST, N.M.P.M.
 EDDY COUNTY, NEW MEXICO

basin
surveys
 focused on excellence
 in the oilfield

P.O. Box 1786
 1120 N. West County Rd.
 Hobbs, New Mexico 88241
 (505) 393-7316 - Office
 (505) 392-3074 - Fax
 basinsurveys.com

W.O. Number: SS-C:\DRAWINGS\BASS\BASS5640-2

Survey Date: 7-26/27-2005

Scale: 1" = 2000'

Date: 8-1-2005

BASS
ENTERPRISES
PRODUCTION COMPANY



EDDY COUNTY, NEW MEXICO

basin
surveys

**focused on excellence
in the oilfield**

**P.O. Box 1786
1120 N. West County Rd.
Hobbs, New Mexico 88241
(505) 393-7316 - Office
(505) 392-3074 - Fax
basinsurveys.com**

W.O. Number. SS-C: DRAWINGS\BASSI
BASS5639-2

Survey Date: 7-26/27-2005

Scale: 1" = 2000'

Date: 8-1-2005

**BASS
ENTERPRISES
PRODUCTION COMPANY**

