

DISTRICT I
1825 N. French Dr., Hobbs, NM 88240

DISTRICT II
811 South First, Artesia, NM 88210

DISTRICT III
1000 Rio Brazos Ed., Aztec, NM 87410

DISTRICT IV
2040 South Pacheco, Santa Fe, NM 87505

State of New Mexico
Energy, Minerals and Natural Resources Department

Form C-102
Revised March 17, 1999

Submit to Appropriate District Office
State Lease - 4 Copies
Fee Lease - 3 Copies

OIL CONSERVATION DIVISION

2040 South Pacheco
Santa Fe, New Mexico 87504-2088

☐ AMENDED REPORT

WELL LOCATION AND ACREAGE DEDICATION PLAT

API Number 30-015-34946	Pool Code 47545	Pool Name Nash Draw - Delaware, BS, Avalon, Sd
Property Code 001796	Property Name POKER LAKE UNIT	Well Number 264
OGRID No. 001801	Operator Name BASS ENTERPRISES PRODUCTION COMPANY	Elevation 3197'

Surface Location

UL or lot No.	Section	Township	Range	Lot Idn	Feet from the	North/South line	Feet from the	East/West line	County
3	6	24S	30E		1780	SOUTH	660	WEST	EDDY

Bottom Hole Location If Different From Surface

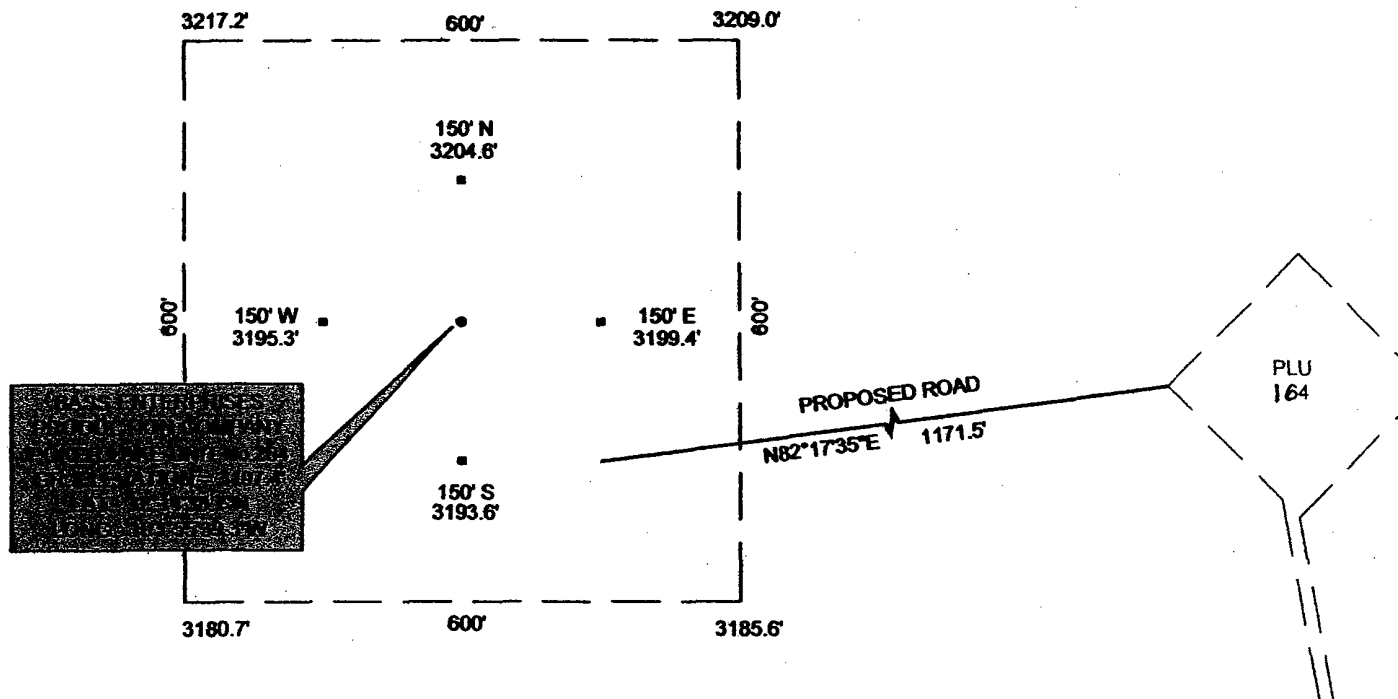
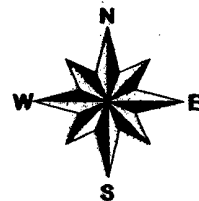
UL or lot No.	Section	Township	Range	Lot Idn	Feet from the	North/South line	Feet from the	East/West line	County

Dedicated Acres 40	Joint or Infill N	Consolidation Code	Order No.
-----------------------	----------------------	--------------------	-----------

NO ALLOWABLE WILL BE ASSIGNED TO THIS COMPLETION UNTIL ALL INTERESTS HAVE BEEN CONSOLIDATED
OR A NON-STANDARD UNIT HAS BEEN APPROVED BY THE DIVISION

<p>LOT 1</p> <p>40.72 ACRES</p> <p>LOT 2</p> <p>40.58 ACRES</p> <p>LOT 3</p> <p>40.42 ACRES</p> <p>3217.2' 3209.0'</p> <p>660'</p> <p>3180.7' 3185.6'</p> <p>40.28 ACRES</p> <p>LOT 4</p> <p>1780'</p> <p>LAT. N32°14'38.7"</p> <p>LONG. W103°55'39.3"</p>	<p>160.00 ACRES</p> <p>160.00 ACRES</p>	<p>OPERATOR CERTIFICATION</p> <p>I hereby certify the the information contained herein is true and complete to the best of my knowledge and belief.</p> <p><i>William R. Dannels</i></p> <p>Signature</p> <p>W.R. DANNELS</p> <p>Printed Name</p> <p>DIVISION DRILLING SUPT.</p> <p>Title</p> <p>4/3/06</p> <p>Date</p> <p>SURVEYOR CERTIFICATION</p> <p>I hereby certify that the well location shown on this plat was plotted from field notes of actual surveys made by me or under my supervision, and that the same is true and correct to the best of my belief.</p> <p>JANUARY 19, 2006</p> <p>Date Surveyed</p> <p>Signature GARY L. JONES</p> <p>Professional Surveyor</p> <p>7977</p> <p>W.O. No. 6077</p> <p>Certificate No. Gary L. Jones 7977</p> <p>BASIN-SURVEYS</p>
--	---	---

SECTION 6, TOWNSHIP 24 SOUTH, RANGE 30 EAST, N.M.P.M.
EDDY COUNTY, NEW MEXICO



DIRECTIONS TO LOCATION:
FROM THE INTERSECTION OF STATE HIGHWAY #128 AND
COUNTY ROAD #793 (RAWHIDE ROAD) GO SOUTH 7.1 MILES, THE
WEST 0.1 MILES TO THE POKER LAKE #264 AND BEGIN ROAD



BASS ENTERPRISES PRODUCTION COMPANY

POKER LAKE UNIT WELL No. 264 / WELL PAD TOPO

THE POKER LAKE UNIT No. 264 LOCATED
1780' F.S.L AND 660' F.W.L., SECTION 6
TOWNSHIP 24 SOUTH, RANGE 30 EAST, N.M.P.M.
EDDY COUNTY, NEW MEXICO

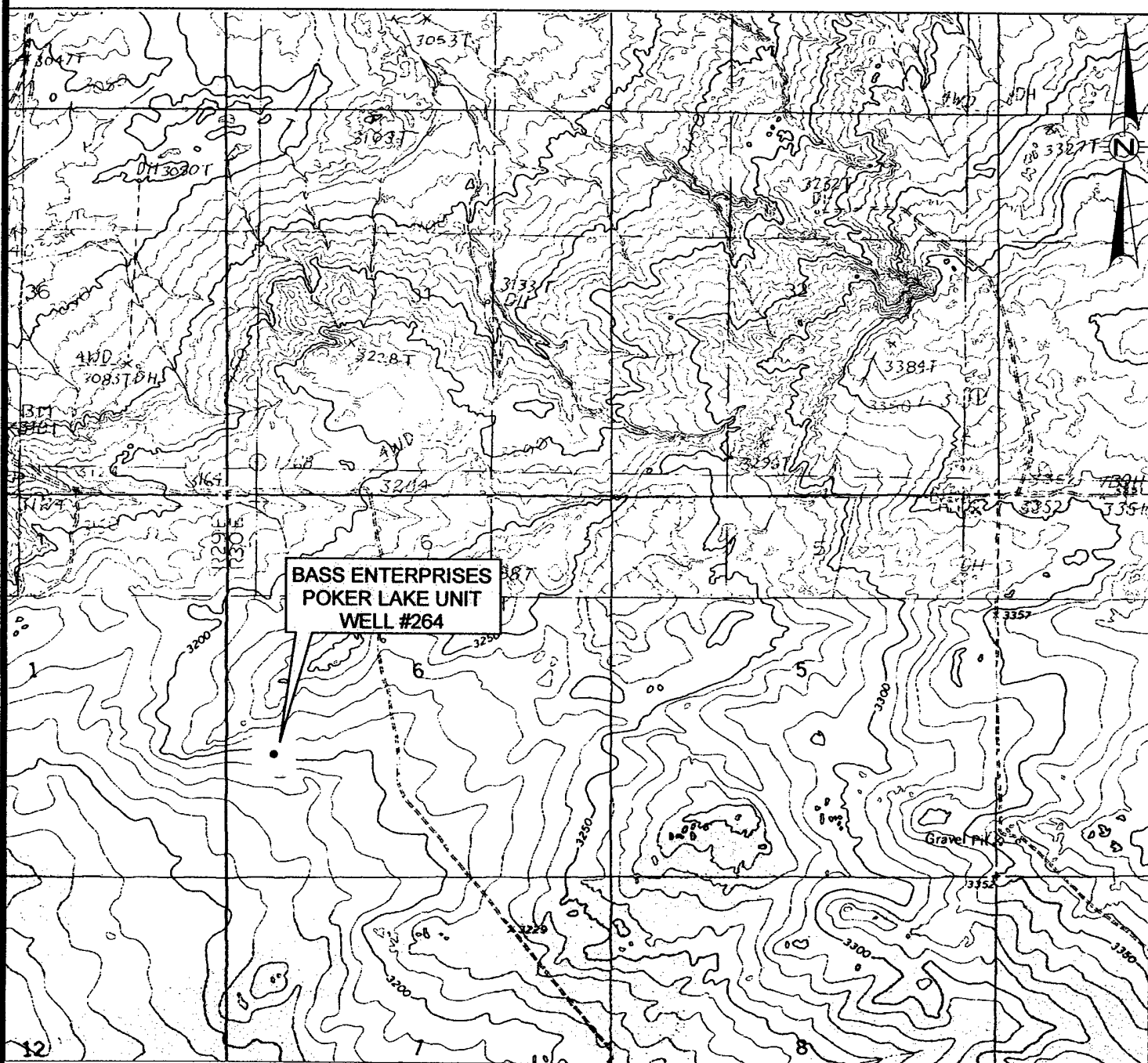
BASIN SURVEYS P.O. BOX 1786 -HOBBS, NEW MEXICO

W.O. Number: 6077 Drawn By: S.STANFIELD

Date: 1-24-2006 Disk:C:\DRAWINGS\BASS\BASS6077-1

Survey Date: 1-19-2006

Sheet 1 of 1 Sheets



BASS ENTERPRISES POKER LAKE UNIT #264
 1780' F.S.L. & 660' F.W.L., SECTION 6,
 TOWNSHIP 24 SOUTH, RANGE 30 EAST, N.M.P.M.
 EDDY COUNTY, NEW MEXICO

basin
surveys
 focused on excellence
 in the oilfield

P.O. Box 1786
 1120 N. West County Rd.
 Hobbs, New Mexico 88241
 (505) 393-7316 - Office
 (505) 392-3074 - Fax
 basin-surveys.com

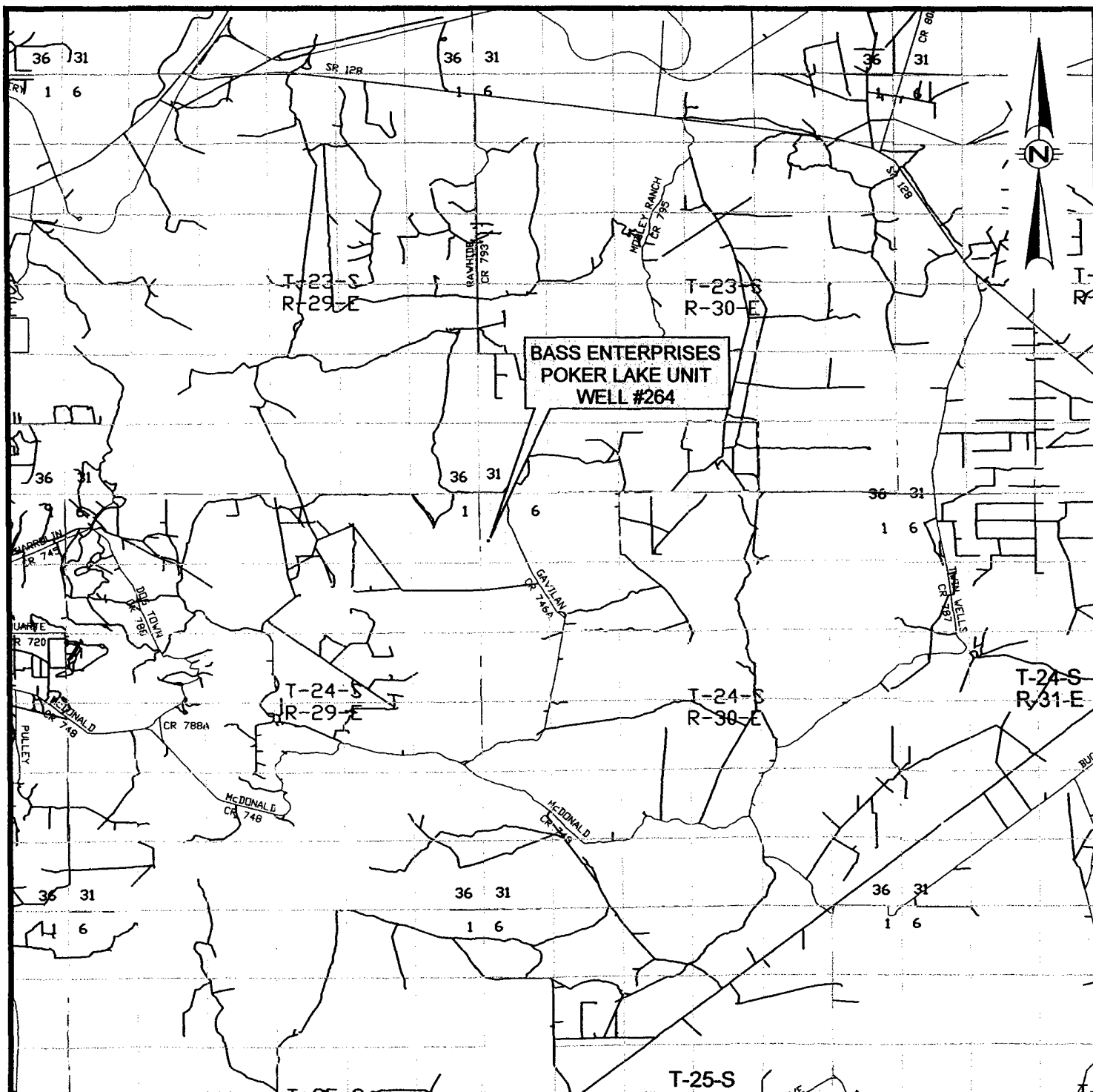
W.O. Number: SS-C:\DRAWINGS\BASS\BASS6077-1

Survey Date: JANUARY 19, 2006

Scale: 1" = 2000'

Date: JANUARY 24, 2006

BASS
ENTERPRISES



BASS ENTERPRISES POKER LAKE UNIT #264
 1780' F.S.L. & 660' F.W.L., SECTION 6,
 TOWNSHIP 24 SOUTH, RANGE 30 EAST, N.M.P.M.
 EDDY COUNTY, NEW MEXICO

basin
surveys
 focused on excellence
 in the oilfield

P.O. Box 1786
 1120 N. West County Rd.
 Hobbs, New Mexico 88241
 (505) 393-7316 - Office
 (505) 392-3074 - Fax
 basinsurveys.com

W.O. Number: SS-C:\DRAWINGS\BASS\BASS6077-1

Survey Date: JANUARY 19, 2006

Scale: 1" = 2 MILES

Date: JANUARY 24, 2006

BASS
ENTERPRISES