

• District I  
1625 N. French Dr., Hobbs, NM 88240  
District II  
1301 W. Grand Avenue, Artesia, NM 88210  
District III  
1000 Rio Brazos Road, Aztec, NM 87410  
District IV  
1220 S. St. Francis Dr., Santa Fe, NM 87505

State of New Mexico  
Energy Minerals and Natural Resources

Oil Conservation Division  
1220 South St. Francis Dr.  
Santa Fe, NM 87505

Form C-101  
May 27, 2004

Submit to appropriate District Office

☐ AMENDED REPORT

APPLICATION FOR PERMIT TO DRILL, RE-ENTER, DEEPEN, PLUGBACK, OR ADD A ZONE

<sup>1</sup> Operator Name and Address Yates Petroleum Corporation 105 South Fourth Street Artesia, New Mexico 88210		<sup>2</sup> OGRID Number 025575
<sup>3</sup> Property Code 33226		<sup>4</sup> API Number 30-015-33185
<sup>5</sup> Property Name Clarence BCU		<sup>6</sup> Well No. 2
<sup>9</sup> Proposed Pool 1 Unders Pecos River Morrow		<sup>10</sup> Proposed Pool 2

<sup>7</sup> Surface Location

UL or lot no.	Section	Township	Range	Lot Idn	Feet from the	North/South line	Feet from the	East/West line	County
I	10	16S	26E		1980'	South	660'	East	Eddy

<sup>8</sup> Proposed Bottom Hole Location If Different From Surface

UL or lot no.	Section	Township	Range	Lot Idn	Feet from the	North/South line	Feet from the	East/West line	County

Additional Well Information

<sup>11</sup> Work Type Code N	<sup>12</sup> Well Type Code G	<sup>13</sup> Cable/Rotary R	<sup>14</sup> Lease Type Code P	<sup>15</sup> Ground Level Elevation 3331'
<sup>16</sup> Multiple N	<sup>17</sup> Proposed Depth 7750'	<sup>18</sup> Formation Morrow	<sup>19</sup> Contractor Not Determined	<sup>20</sup> Spud Date ASAP
Depth to Groundwater 66'		Distance from nearest fresh water well 3000+/-		Distance from nearest surface water 1000+/-
<sup>21</sup> Proposed Casing and Cement Program				
Pit: Liner: Synthetic XX 12 mils thick Clay <input type="checkbox"/> Pit Volume: <input checked="" type="checkbox"/> bbls Drilling Method: Fresh Water <input type="checkbox"/> Brine <input checked="" type="checkbox"/> Diesel/Oil-based <input type="checkbox"/> Gas/Air <input type="checkbox"/>				

<sup>21</sup> Proposed Casing and Cement Program

Hole Size	Casing Size	Casing weight/foot	Setting Depth	Sacks of Cement	Estimated TOC
17.5"	13.375"	48#	400'	400 sx	0
12.25"	9.625"	36#	1400'	750 sx	0
8.75"	5.5"	15.5#	7750'	2250 sx	0
As a condition of approval, if during pit construction water is encountered or if water seeps in pits after construction the <u>OCD MUST BE CONTACTED IMMEDIATELY!</u>					

<sup>22</sup> Describe the proposed program. If this application is zone. Describe the blowout prevention program, if any.

Yates Petroleum Corporation proposes to drill and test the Morrow and intermediate formations. Approximately 400' of surface casing will be set and cement circulated to shut off gravel and cavings. If commercial, production casing will be run and cemented, will perforate and stimulate as needed for production.

MUD PROGRAM: 0-400' FW; 400'-1400' Fresh Water; 1400'-7200' Cut Brine; 7200'-7750' Salt Gel/Starch.

BOPE PROGRAM: A 5000# BOPE will be installed on the 9 5/8" casing and tested daily.

NO H2S ANTICIPATED.

Thank you.

<sup>23</sup> I hereby certify that the information given above is true and complete to the best of my knowledge and belief. I further certify that the drilling pit will be constructed according to NMOC guidelines ☐, a general permit ☒, or an (attached) alternative OCD-approved plan ☐.

Signature:

Printed name: Cy Cowan

Title: Regulatory Agent

E-mail Address:

Date: 1/5/07

Phone: (505) 748-4372

OIL CONSERVATION DIVISION

Approved by:

BRYAN G. ARANT  
DISTRICT II GEOLOGIST

Title:

Approval Date:

JAN 09 2007

JAN 09 2008

Conditions of Approval

NOTIFY OCD OF SPUD & TIME TO  
WITNESS CEMENTING OF  
SURFACE & INTERMEDIATE  
CASING

PREVIOUSLY APPROVED

<b>16</b>		<b>FEE</b>			
					<p style="text-align: right;"><b>17 OPERATOR CERTIFICATION</b></p> <p>I hereby certify that the information contained herein is true and complete to the best of my knowledge and belief, and that this organization either owns a working interest or unleased mineral interest in the land including the proposed bottom hole location or has a right to drill this well at this location pursuant to a contract with an owner of such a mineral or working interest, or to a voluntary pooling agreement or a compulsory pooling order heretofore entered by the division.</p> <div style="display: flex; justify-content: space-between; align-items: center;"> <span style="font-size: 1.2em;">12/20/08</span> </div> <hr/> <div style="display: flex; justify-content: space-between;"> <span>Signature</span> <span>Date</span> </div> <hr/> <p>Cy Cowan, Regulatory Agent</p> <p>Printed Name</p>
					<p style="text-align: right;"><b>18 SURVEYOR CERTIFICATION</b></p> <p>I hereby certify that the well location shown on this plat was plotted from field notes of actual surveys made by me or under my supervision, and that the same is true and correct to the best of my belief.</p> <p>REFER TO ORIGINAL PLAT.</p> <p>Date of Survey _____</p> <p>Signature and Seal of Professional Surveyor: _____</p>
				660'	
			1980'		
					<hr/> <p>Certificate Number _____</p>

District I

1625 N. French Dr., Hobbs, NM 88240

District II

1301 W. Grand Ave., Artesia, NM 88210

District III

1000 Rio Brazos Rd., Aztec, NM 87410

District IV

1220 S. St Francis Dr., Santa Fe, NM 87505

State of New Mexico  
Energy, Minerals and Natural Resources  
Oil Conservation Division  
1220 S. St Francis Dr.  
Santa Fe, NM 87505

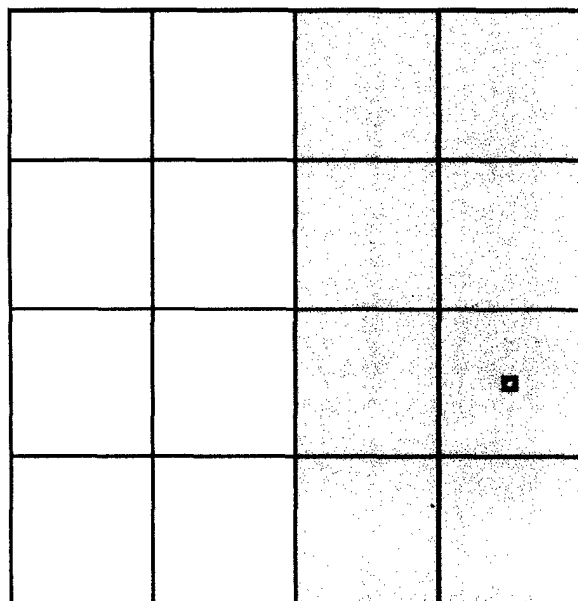
Form C-102

**WELL LOCATION AND ACREAGE DEDICATION PLAT**

API Number 30-015-33185	Pool Name Wildcat Morrow	Pool Code
Property Code 33226	Property Name Clarence BCU	Well No. 002
OGRID No. 25575	Operator Name YATES PETROLEUM CORPORATION	Elevation 3331

**Surface And Bottom Hole Location**

UL or Lot	Section	Township	Range	Lot Idn	Feet From	N/S Line	Feet From	E/W Line	County
I	10	16S	26E	I	1980	S	660	E	Eddy
Dedicated Acres 320		Joint or Infill		Consolidation Code		Order No.			

**OPERATOR CERTIFICATION**

*I hereby certify that the information contained herein is true and complete to the best of my knowledge and belief.*

Electronically Signed By: Debbie Caffall

Title: Regulatory Technician

Date: 01/15/2004

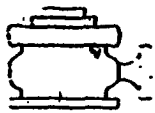
**SURVEYOR CERTIFICATION**

*I hereby certify that the well location shown on this plat was plotted from field notes of actual surveys made by me or under my supervision, and that the same is true and correct to the best of my belief.*

Surveyed By: Herschel Jones

Date of Survey: 12/10/2003

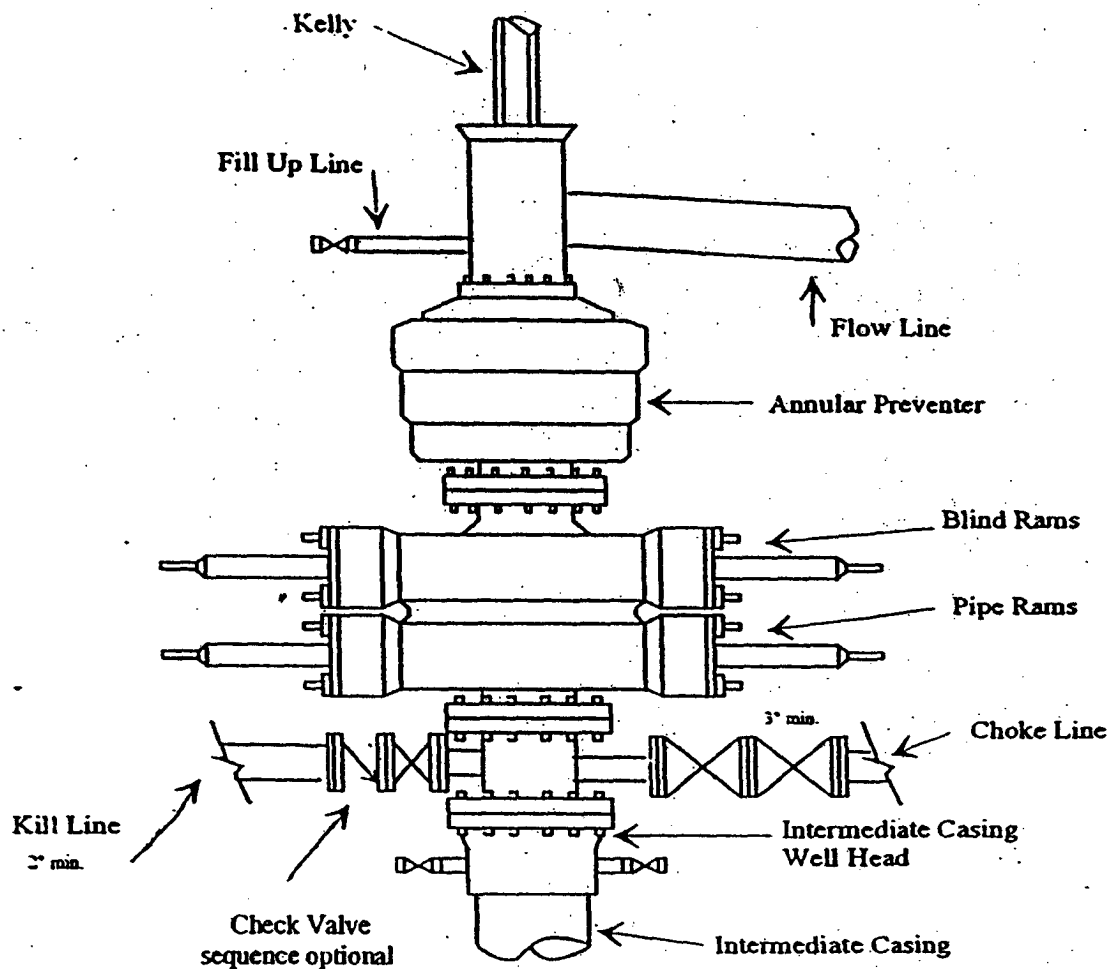
Certificate Number: 3640



# Yates Petroleum Corporation

BOP-3

## Typical 3,000 psi Pressure System Schematic Annular with Double Ram Preventer Stack



## Typical 3,000 psi choke manifold assembly with at least these minimum features

