

District I
1625 N. French Dr., Hobbs, NM 88240
District II
1301 W. Grand Avenue, Artesia, NM 88210
District III
1000 Rio Brazos Rd., Aztec, NM 87410
District IV
1220 S. St. Francis Dr., Santa Fe, NM 87505

State of New Mexico
Energy, Minerals & Natural Resources Department
OIL CONSERVATION DIVISION
1220 South St. Francis Dr.
Santa Fe, NM 87505

Form C-102
Revised October 12, 2005
Submit to Appropriate District Office
State Lease- 4 Copies
Fee Lease- 3 Copies
☐ AMENDED REPORT

WELL LOCATION AND ACREAGE DEDICATION PLAT

API Number 30-015-35383		Pool Code 75250	Pool Name COTTONWOOD CREEK WOLFCAMP (GAS)
Property Code	Property Name YANGTZE "A" 3 FEE		Well Number 1H
OCRID No. 7377	Operator Name EOG RESOURCES, INC.		Elevation 3463'

Surface Location

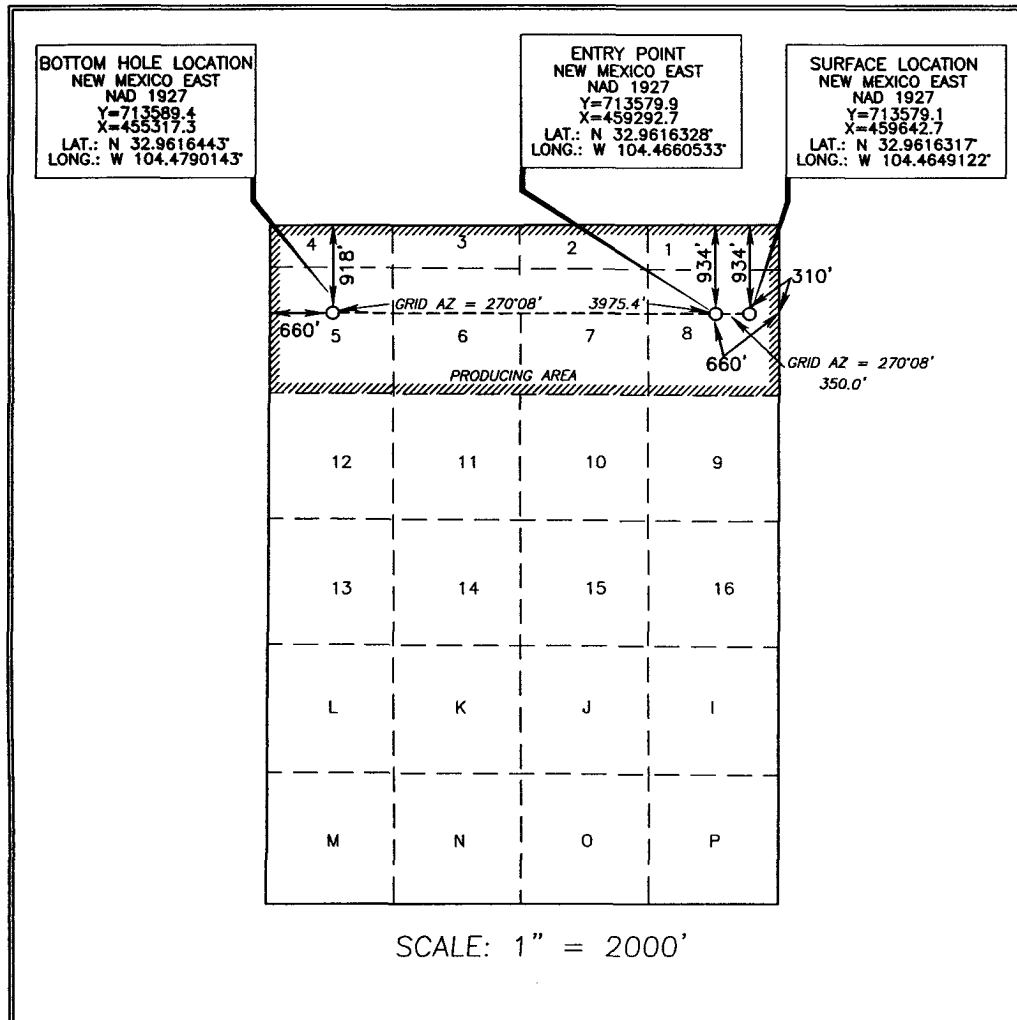
UL or lot no.	Section	Township	Range	Lot Idn	Feet from the	North/South line	Feet from the	East/West line	County
8	3	16 SOUTH	25 EAST, N.M.P.M.		934'	NORTH	310'	EAST	EDDY

Bottom Hole Location If Different From Surface

UL or lot no.	Section	Township	Range	Lot Idn	Feet from the	North/South line	Feet from the	East/West line	County
5	3	16 SOUTH	25 EAST, N.M.P.M.		918'	NORTH	660'	WEST	EDDY

Dedicated Acres 227.96	Joint or Infill	Consolidation Code	Order No.
----------------------------------	-----------------	--------------------	-----------

No allowable will be assigned to this completion until all interests have been consolidated or a non-standard unit has been approved by the division.



OPERATOR CERTIFICATION

I hereby certify that the information contained herein is true and complete to the best of my knowledge and belief, and that this organization either owns a working interest or unleased mineral interest in the land including the proposed bottom hole location or has a right to drill this well at this location pursuant to a contract with an owner of such a mineral or working interest, or to a voluntary pooling agreement or a compulsory pooling order heretofore entered by the division.

Donny G. Glanton 1/18/07
Signature Date

Donny G. Glanton
Printed Name

SURVEYOR CERTIFICATION

I hereby certify that the well location shown on this plat was plotted from field notes of actual surveys made by me or under my supervision and that the same is true and correct to the best of my belief.

DECEMBER 05, 2006
Date of Survey

Signature and Seal of Professional Surveyor

Terry J. Abel 1/10/2007
Certificate Number 15079

WO# 061206WL-h (JL)

Permit Information:

Well Name: Yangtze A 3 Fee #1H

Location:

SL 934' FNL & 310' FEL, Section 3, T-16-S, R-25-E, Eddy Co., N.M.

BHL 918' FNL & 660' FWL, Section 3, T-16-S, R-25-E, Eddy Co., N.M.

Casing Program:

Casing	Setting Depth	Hole Size	Casing Size	Casing Weight	Casing Grade	Desired TOC
Surface	1,150'	12-1/4"	8-5/8"	32#	J-55	Surface
Production	8,913'	7-7/8"	5 1/2"	17#	N-80	Surface

Cement Program:

Depth	No. Sacks	Slurries:
1,150'	200	Lead: Premium Plus + 2% CaCl ₂ + 3% Econolite + 1/4 pps Flocele
	175	Tail: Premium Plus + 2% CaCl ₂ + 1/4 pps Flocele
8,913'	400	Lead: Interfill C + 1/4 pps Flocele
	350	Tail: Premium Cement + 100% Acid Soluble Additive + 0.6% Halad®-344 + 0.8% Econolite + 0.2% HR-55

Mud Program:

Depth	Type	Weight (ppg)	Viscosity	Water Loss
0 - 1,150'	Fresh - Gel	8.6-8.8	28-34	N/c
1,150' - 4,400'	Cut Brine	8.8-9.2	28-34	N/c
4,400' - 5,100'	Cut Brine	8.8-9.2	28-34	10-15
4,250' - 8,913'	Polymer (Lateral)	9.0-9.4	40-45	10-20