

Submit 3 Copies to Appropriate District
Office
District I
1625 N. French Dr., Hobbs, NM 88240
District II
1301 W. Grand Ave., Artesia, NM 88210
District III
1000 Rio Brazos Rd., Aztec, NM 87410
District IV
1220 S. St. Francis Dr., Santa Fe, NM
87505

State of New Mexico
Energy, Minerals and Natural Resources

Form C-103
May 27, 2004

OIL CONSERVATION DIVISION
1220 South St. Francis Dr.
Santa Fe, NM 87505

WELL API NO.	30-015-21308
5. Indicate Type of Lease	FEDERAL
STATE <input type="checkbox"/>	FEE <input type="checkbox"/>
6. State Oil & Gas Lease No.	
7. Lease Name or Unit Agreement Name	BLUE STREAK FEDERAL
8. Well Number	1
9. OGRID Number	229137
10. Pool name or Wildcat	96099
	SWD; CISCO

SUNDRY NOTICES AND REPORTS ON WELLS

(DO NOT USE THIS FORM FOR PROPOSALS TO DRILL OR TO DEEPEN OR PLUG BACK TO A DIFFERENT RESERVOIR. USE "APPLICATION FOR PERMIT" (FORM C-101) FOR SUCH PROPOSALS.)

1. Type of Well: Oil Well ☐ Gas Well ☒ Other

2. Name of Operator

COG Operating LLC

3. Address of Operator

550 W. Texas Ave., Suite 1300

Midland, TX 79701

4. Well Location

Unit Letter **I**: **1980'** feet from the **South** line and **660'** feet from the **East** line

Section **29** Township **17S** Range **29E** NMPM County **EDDY**

11. Elevation (Show whether DR, RKB, RT, GR, etc.)

3582' GR

Pit or Below-grade Tank Application ☐ or Closure ☒

Pit type _____ Depth to Groundwater _____ Distance from nearest fresh water well _____ Distance from nearest surface water _____

Pit Liner Thickness: _____ mil Below-Grade Tank: Volume _____ bbls; Construction Material _____

12. Check Appropriate Box to Indicate Nature of Notice, Report or Other Data

NOTICE OF INTENTION TO:

PERFORM REMEDIAL WORK ☐ PLUG AND ABANDON ☐
TEMPORARILY ABANDON ☐ CHANGE PLANS ☐
PULL OR ALTER CASING ☐ MULTIPLE COMPL ☐

OTHER: ☐

SUBSEQUENT REPORT OF:

REMEDIAL WORK ☐ ALTERING CASING ☐
COMMENCE DRILLING OPNS. ☐ P AND A ☐
CASING/CEMENT JOB ☐

OTHER: **Convert to Injection** ☒

13. Describe proposed or completed operations. (Clearly state all pertinent details, and give pertinent dates, including estimated date of starting any proposed work). SEE RULE 1103. For Multiple Completions: Attach wellbore diagram of proposed completion or recompletion.

SEE 2 PAGE ATTACHMENT

CHART ON FILE WITH DISTRICT II OCD

WO APPROVAL TO BEGIN INJECTION

I hereby certify that the information above is true and complete to the best of my knowledge and belief. I further certify that any pit or below-grade tank has been/will be constructed or closed according to NMOCD guidelines ☐, a general permit ☐ or an (attached) alternative OCD-approved plan ☐.

SIGNATURE Phyllis Edwards TITLE Regulatory Analyst DATE 4-5-07

Type or print name **Phyllis Edwards** E-mail address: **pedwards@conchoresources.com** Telephone No. **432-685-4340**
For State Use Only

APPROVED BY: Gary Guye TITLE Deputy Field Inspector DATE APR 9 2007
Conditions of Approval (if any): District II - Artesia

COG OPERATING LLC**Blue Streak Federal #1**

Sec 29, T17S, R29E

API #30-015-21308

Eddy County, NM

3160-5 Attachment – Subsequent Report – Convert plugged well to SWD

01/26/07 RU & start drilling out surface plug @ 62'.

01/31/07 Tested 2nd plug @ 757' held 1000#. RIH w/ pkr to 740'. Pump 100 sx Class C to squeeze off perfs @ 360'-390'. Pressure held at 335 #. WOC.

02/01/07 Drill out cmt to 385'. Ran test below hole again – held ok. Pull up above perfs @184' & set pump. Pump 200 sx Neat & tail w/ 50 sk Class C 3% CaCl had circ entire time. Pressure held @ 400#.

02/02/07 Drill out to 390'. Pressure up 700#. Bled off slow. Will POH & run pkr below hole at 421'. Held 1000#. Pull above hole at 331'. Test backside. Held 500#. Set pkr 60' FS. Re-cement w/ 100sks Class C 3%. Maintain about 900# during pumping. Disp last 2 bbls slow. Press up 1200#.

02/05/07 RIH w/ bit. Tag cmt at 285'. Drill out at 401'. Test to 700#. Held, RIH & tag 2nd plug at 757'. Drilling fell out at 906'. Test bleeding off. POH w/ bit & DC. PU pkr & RIH to 769'. Test backside - holding 700#. Run to 926'. Test down PKR. Held 1000#. Pull up & isolate hole between 870'-904'. Pump into hole at 1-1/4 BPM at 1200#-1300#. Test backside again - holding. Pull up & set pkr at 620'

02/06/07 50 sx sqz job. 1 PM at 1200#. Disp last 4 bbls @ 1/2 BPM. Press up 1600# & SI.

02/07/07 Tag cmt at 815'. Drill out cmt on squeeze job. Fell thru at 906'. Tested to 700#. Held. RIH to 3rd plug & tag at 2556'. Start drlg. Fell thru at 2720'. Pressure up csg to 700# - all held. RIH to 4th plug & tag at 4960'. Resume drilling.

02/08/07 Drilling cement. Plug fell thru at 5026'. RU & test casing at 700# for 5 min - holding. RIH to 5th cmt plug & CIBP tag at 7118'. Resume drilling cmt to CIBP at 7146'. Drilled out taking water at 2 BPM while circulating. Close in test injection rate at 1 1/2 BPM at 800#. SD on slight vacuum. Cont to RIH to 6th plug & tag at 8460'. CHC pumping at 5 BPM - getting back about 3 BPM. Finish circ hole & POH.

02/13/07 RIH & set pkr at 4861'. Tested backside 600# - held. Est inj rate at 1-1/2 BPM at 1100#. Begin 100 sx displace down to 6750'. SI w/ 1350#.

02/14/07 Pressure at 450# in 40 min - backside remained same.

02/14/07 Set pkr at 4586' & tested backside - holding 650#. Pump 100 sx Class C 2%.

02/15/07 Backside still had 300# tbg - 0 press. Rel pkr & POH. Drill out plug. Drilled thru at 5028'. Tested csg at 750# - still holding after 15 minutes.

02/16/07 POH. Hit a tight spot.

02/17/07 RIH w/ tprd mill w/ string mill. Work bad spot at 5026'. Press back up 750# - held.

02/19/07 RIH w/ 5-1/2" RTTS. POH & LD pkr. RIH w/ 4-3/4" bit, csg scraper, DC, & 2-7/8" tbg. Tag cmt at 6030'. Press at 750#. Drilling cmt from 6030' to 6248' (218'). Fell out. Ran another jt-no tag. Press up to 750#. Bled off in 2 min. Press up again to 750#. Bled off in 2 min. Cont to RIH past Abo Perfs at (7170-7209') to 7688' POH.

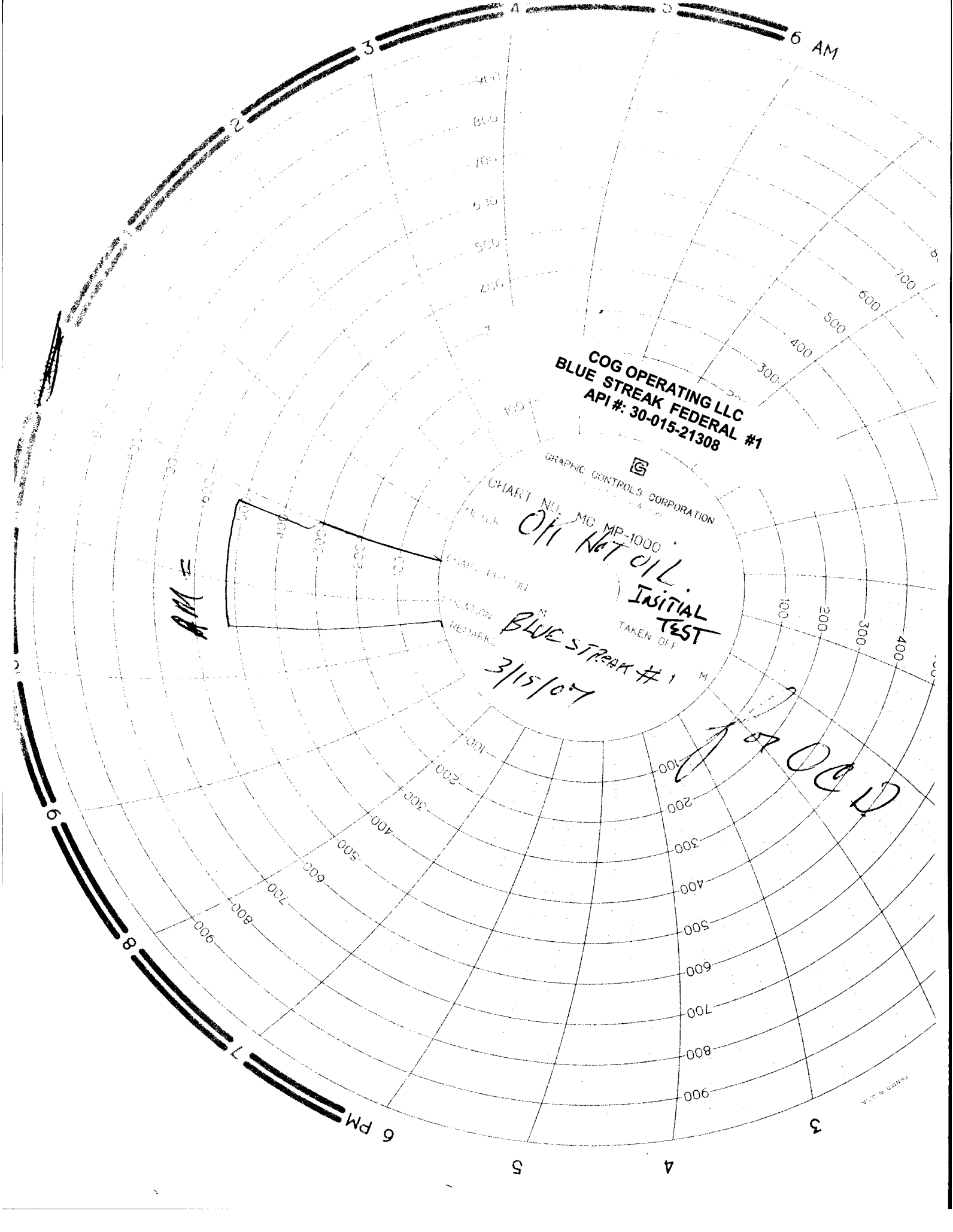
02/20/07 Set RTTS 7288' all below to CIBP@ 8525'-holding. Pull up 6900' & test backside 600#-held. Pump into Abo Perfs (7170-7209) at 2100# at 14 gals a min. Pumping into 14 gal min at 2100#-no change. RU BJ & spot 7 bbls across perfs. Pull up & set pump-1/2 bbl min @ 3220#. Acid in pump - extra 20 bbls. Pumping 2 BPM @ 1900# at end. SD. ISIP 1100# - went on vacuum 2 min. POH.

02/21/07 RU Schlumberger & RIH with SV Retainer. Set at 7005', POH & RD WL. RIH with SV tool & sting into. OK. Pull out & took 26 bbls to get circ. Sting back into SV. Press up backside to 700#-holding good, Est rate 2 BPM at 1900# w/ fr wtr. Mix 31 bbls slurry cmt 100 sx Class H 3% FL 50 sx Class H. Pump down hole. Press fell to 650#. Pumping 2 BPM w/ hydrostatic pump. 21 bbls of flush. SD & press fell off. Get back on pump 1-1/2 BPM for 3 bbls press. Now up to 3700#. SD. Wait 5 min-got back on pump at 1/2 BPM. Pump 1 bbl. Press up to 4000#-holding, Sting out & reverse out 26 sx (8-1/2 bbls) of slurry to pit. RD BJ. POH laydown tool, Pickup 4-3/4" bit, scraper, 10-DC, & 2-7/8" tubing going thru place at 5026' tag turn 1/4 turn went thru. Leave 10 stds out.

02/22/07 Finish RIH w/ bit. Tag 6997'. Drill cmt. Tag SV at 7005'. Drill out to 7035'.

02/23/07 Finish drilling out squeeze at 7212'. Test 700#. In 15 min no bleed off. RIH to next cmt plug & CIBP at 8460'. RIH & tag next plug at 8421'. Drld cmt dn to 8505'. POH.

- 02/26/07 RIH w/ new bit. Back to drilling @ 8505'. CIBP suppose to be at 8525'. Drilled CIBP at 8508'. Fell thru & ran on in & tag at 8760'. Drilled 2' rest of CIBP & cmt last plug, CHC & had 10 min of gas & oil up. cleaned up & test w/ pump @ 800#. Bled off to 720# in 1 min. POH.
- 02/27/07 RU WL & set SV retainer @ 8468'. RIH w/ tools to sqz. Ran SV sting into inj rate 1-1/2 BPM. Went w/ 50 sx plug. Displace dn within 3 bbls of SV. Sting into pump 25 sx past SV. Press up to 3800#. SD 5 min. Got back on press to 4000# w/ 1/2 bbl sting out reverse remaining cmt in tbg to pit. Begin RIH w/ bit & DCs.
- 02/28/07 Fin RIH & tag SV 8468'. Circ. Press up 750#-lost 100# in 15 min. Held at 600#, Retest to 750#-lost 50# in 15 min. Next 15 min held at 700#. Drilled out cmt run tag next plug at 8798'. Pressure csg to 750#. Left SI.
- 03/01/07 SICP 0 PSI. Press up to 750#. Lost 50# in 20 min-holding at 700# for next 30 min. Drilling out last CIBP @ 8798'.
- 03/02/07 Fin POH w/ bit. PU RTTS & RIH to 9126'. Test btm plug at 10,100'-held 1500#. Move up to 9001'. Set pkr & test backside to 750#-holding. Pump down tbg thru perf at 950# at 2-1/2 BPM. POH & RU WL. Pump 150 sx. Sqzd off w/ 60 sx. Stung out. Started to rev pressure up 1850# backside. Wtr started coming out 11-3/4" surface csg. Switch & go long way. Circ 90 sx to pit. Set CIBP @ 9580' & set SV set at 8996'.
- 03/03/07 Found hole between 355' & 390' - same place 3 sqz jobs were previously done. Pump 100 sx CI C 3% CaCl. Had circ up 11-3/4" thru job, but did not circ cmt. SD. Pumping rate 1 BPM at 250# to 300#. SI.
- 03/05/07 Pump down still had hole pump 600# pumping into. Unset pkr, POH & PU bit & DCs. Tag cmt @ 395' Start drilling & fell out at 409'. Went down 90' more. No tag. POH & run pkr again to test before cmt. Ran RBP & found hole between 390'-408'. POH. Pump 100 sx CI C 3%. Staged last 7-1/2 bbls. Press only up to 100-125#.
- 03/06/07 RIH & tag cmt @ 384'. Drill out dn to 403'. Test squeeze 700#. RIH & drill out cmt. Stringers dn to 4640'. Cont in hole & tag SV EZ drill @ 8996'. Test to 750#. All sqzs holding. RU & drill about 1/2 of SV rubbers spinning w/ bit. Finally drilled most of rubbers up. CHC & SDFN.
- 03/07/07 Cont drill out rest of SV & cmt dn to 9092' & test 700# 20 min - holding. RIH & tag DV tool @ 9580'. CHC w/ 190 bbls fr wtr. POH & LD DC. RU HO & run MIT on csg. Press to 560# & bled off 55# in 30 min. Witnessed by Terry Wilson w/BLM. Bled well down PSI again 580#. Lost 40-45# in 30 min. Terry Wilson Ok'd chart. RU Schlumberger & ran PDC from CIBP back to 8500'. SDFN.
- 03/08/07 Perf 9164'-9396' w/ 2 SPF. 72 total .41 holes. RIH w/ 5 1/2" RTTS & set @ 9140' w/ 294 jts. Est. rate @ 1 BPM @ 3800'. Pumped 10 bbls & PSI inc to 3925# @ 1 BPM. SD 1 min. 1540#. In 3 min 0. Open bypass & pump 10 bbls acid ahead & 40 bbls acid w/ balls. Close bypass & start pumping @ 3 BPM @ 4890# w/ 70 bbls acid. Pumped 4.5 BPM @ 4056# w/ 85 bbls acid pumped 6 BPM @ 4400#. Balled off 5000# w/100 balls on. Surge balls. Let balls fall. Start pumping again w/100 bbls. Pumped 6.8 BPM @ 3200#. Start flush 6.8 bpm @ 2800# flush w/ 54 bbls. SD. ISIP 640#. 3 min 0. Rel pkr. RIH & knock balls off. Pull pkr back up to 9140'. FL standing @ 60'. Well not on vacuum. Reset pkr @ 9140'.
- 03/09/07 Acidize w/ 20,000 gals 15% NEFE gelled acid & drop 35 balls every 75 bbls. Flush w/ 59 bbls fr wtr @ 9.5 bpm @ 4200#. Avg rate 9.5 bpm, avg psi 4400#. ISIP 0. Well on slight vacuum. Rel pkr. RIH. Knock balls off perms. POH & LD tbg. SDFN.
- 03/12/07 PU 5-1/2" Nickel Plated Arrowset pkr w/ On/Off w/ 2.25 Profile Nipple "F", 292 jts 2 7/8" 6.5# PC tbg @ 9104.96' w/ pkr element set at 9109.96'. RIH & pump pkr fluid dn backside 170 bbls. Set pkr. Press up backside 500# & bled off 180# in 2 min. Press up again to 500#. Water started coming up 2" valve on 11-3/4" surface casing & around backside. Unset POH standing up.
- 03/13/07 RIH w/ R-4. Found hole again at 383'-402', POH & RIH w/ RBP. Set at 868'. POH & PU pkr. RIH & test to 1500#-held OK, POH. Run open ended & dump 4 sx sand on top of RBP. Tag 12' above RBP. POH & set R-4 at 60' FS. RU BJ pump. Pump 50 sx Thickset, then 100 sx CI C 3%. Tail in 50 sx thickset. Avg rate pumping 1-1/2 BPM wash up. Went to flush pump & 3 bbls locked up at 1550#. Wait 2 min & got back on press up to 1650#. SWI.
- 03/14/07 RIH w/ bit & tag at 161' FS. Start drilling. Drilled out cmt & fell out. Tested 600# - held. POH & PU retrieving tool. Wash 15' sand latch on RBP & POH.
- 03/15/07 PU 5-1/2" Nickel Plated Arrowset pkr w/ On/Off w/ 2.25 Profile Nipple "F", 292 jts 2-7/8" 6.5# PC tbg @ 9104.96' w/ pkr element set at 9109.96'. RIH & pump pkr fluid down backside 170 bbls. Set pkr. Press up backside 520#. No bleed off. OK Hot Oil Service did chart. Fin flanging up WH w/ bronze 2-7/8" valve on top. Ready for injection.



COG OPERATING LLC
BLUE STREAK FEDERAL #1
API #: 30-015-21308

GRAPHIC CONTROLS CORPORATION

CHART NO. MC MP-1000

OFF Not OIL
INITIAL TEST
TAKEN OFF

BLUE STREAK #1
3/15/07

APR 1

7000