

UNITED STATES
DEPARTMENT OF THE INTERIOR
BUREAU OF LAND MANAGEMENT
NOTICE OF INTENT TO DRILL
NOTICE OF INTENT TO RE-ENTER AN
ABANDONED WELL

OCD-ARTESIA

FORM APPROVED
OMB NO. 1004-0135
EXPIRES: NOVEMBER 30, 2000

Do not use this form for proposals to drill or to re-enter an abandoned well. Use Form 3160-3 (APD) for such proposals

SUBMIT IN TRIPLICATE

1a. Type of Well ☒ Oil Well ☐ Gas Well ☐ Other _____

2. Name of Operator

DEVON ENERGY PRODUCTION COMPANY, LP

3. Address and Telephone No.

P. O. Box 250 - Artesia, NM 88211-0250

505-748-3371

4. Location of Well (Report location clearly and in accordance with Federal requirements)*

Sec. 27-T23S-R31E

5. Lease Serial No.

NM-NM0418220-A

6. If Indian, Allottee or Tribe Name

N/A

7. Unit or CA Agreement Name and No.

N/A

8. Well Name and No.

Todd 27M Federal #13

9. API Well No.

30-15-27711

10. Field and Pool, or Exploratory

Ingle Wells (Delaware)

12. County or Parish 13. State

Eddy County, NM

CHECK APPROPRIATE BOX(es) TO INDICATE NATURE OF NOTICE, REPORT, OR OTHER DATA

TYPE OF SUBMISSION

- ☒ Notice of Intent
☐ Subsequent Report
☐ Final Abandonment Notice

TYPE OF ACTION

- ☐ Acidize ☐ Deepen ☐ Production (Start/Resume) ☐ Water Shut-Off
☐ Alter Casing ☐ Fracture Treat ☐ Reclamation ☐ Well Integrity
☐ Casing Repair ☐ New Construction ☐ Recomplete ☒ Other Set Lact Unit
☐ Change Plans ☐ Plug and Abandon ☐ Temporarily Abandon
☐ Convert to Injection ☐ Plug Back ☐ Water Disposal

13. Describe Proposed or Completed Operations (Clearly state all pertinent details, and give pertinent dates, including estimated date of starting any proposed work and approximate duration thereof. If the proposal deepens directionally or recompletes

Devon Energy Production Company, LP respectfully requests permission to set a Lact Unit on the above referenced lease. Please find attached a schematic of the unit that will be set. We currently are producing approximately 200 bbls of oil per day into a pipeline sales line. We have a line running from the Todd 27#11 Satellite to the Todd 27#13 Battery that will pump oil from the Todd 27 #11 Satellite to the Todd 27#13 Battery and we project that the production should be approximately 400 bbls a day, and the oil sold thru the Lact Unit down the pipeline from these two wells.

Attachments:

Schematic of Lact Unit
Pipeline ticket with API Gravity on it.
Todd 27 Lease Diagram

14. I hereby certify that the foregoing is true and correct

Signed Jerry Mathews

Name Jerry Mathews
Title Production Foreman

Date 5/10/2007

(This space for Federal or State Office use)

Approved by DAVID R. GLASS

Title PETROLEUM ENGINEER

Date MAY 21 2007

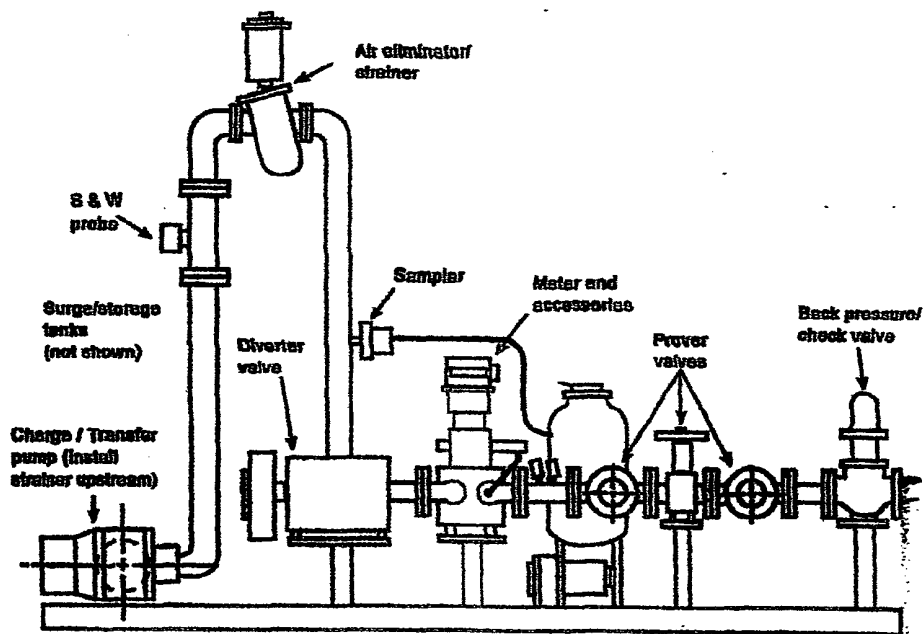
Conditions of approval, if any:

Title 18 U.S.C. Section 1001, makes it a crime for any person knowingly and willfully to make any department or agency of the United States any false, fictitious or fraudulent statements or representations to any matter within its jurisdiction.

*See Instruction on Reverse Side

Accepted for record - NMOCB

5/31/07



Major Components

1. PD Meter – 2" Smith SC-13
2. Water Monitor
3. Automatic Sampling System
4. Electronic Temperature Averager
5. Diverting Valve
6. Back Pressure Control Valve
7. Control Panel With PLC
8. 1 X 1 ½ -8 ANSI Centrifugal Pump With 15HP Electric Motor
9. Skid Size: 50" x 101"



PLAINS

PIPELINE, L.P.

Date: 4/9/2007 08:46:30
Tank: Todd 27Fd Ingle T30533
Description: Todd 27Fd Ingle T30533
Base System: New Mexico Pipeline
Location: Thomas Station Chevron
Conn. Point: Thomas Gath Chev
Flow: ☐ Delivery ☒ Receipt
Unit: ☒ Barrels ☐ Gallons

Shipper: Various
Grade: West Texas Intr
Batch No:
Vessel:
Remarks:

Ticket Number: 1286002197

Revision No: 0

Field Information

Operator: Devon Energy Corporation
Field: Ingle Wells; Delaware
Lease: Todd 27 Fed Ingle
FMP Number:
Code Ref No: 5063364

	Date	Temp	Amb. Temp	Ft	In	Fraction	Seal No:	CPL:	Justin Martin	Transportation Cycle
OPEN	04/08/07 08:00	46.0	46.0	15	4	8 1/16	1469781	Witness:	na	04/07-01
CLOSE	04/09/07 07:51	50.0	50.0	1	1	4 1/16	1469760	Witness:	na	

OBSERVABLES	Open	Close
Sample Gravity:	41.6	41.6
Sample Temperature:	46.0	46.0
API Gravity:	42.8	42.8
CTL:	1.0072	1.0052
SW Pct:	0.50000	
Sulfur Pct:	0.10900	
S W Factor:	0.99500	
Sulfur Factor:	0.99891	

VOLUME CALCULATIONS

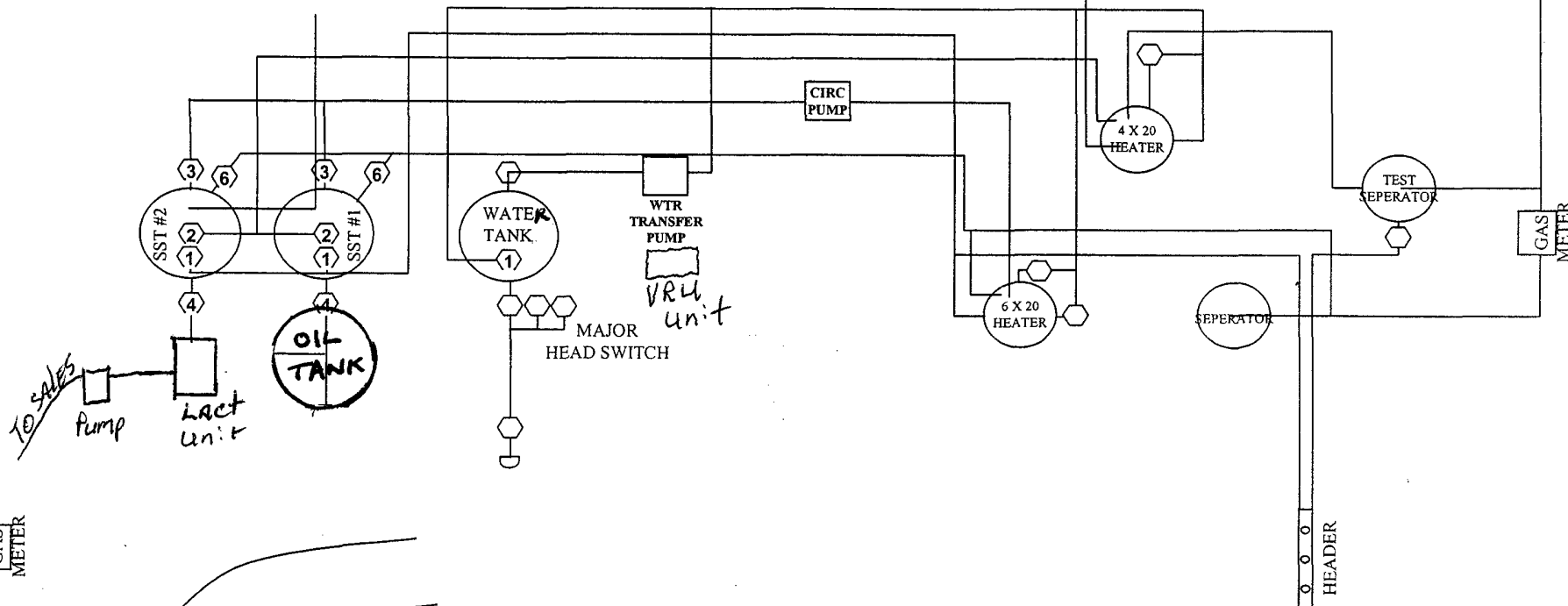
	Total Observed Volume	Free Water	CTS	Floating Roof Adjustment	CTL	Gross Standard Volume @ 60
OPEN	514.69	0 5 0	13.97 x 0.99983	+/- 0.00	x 1.0072	= 504.23
CLOSE	37.03	0 5 0	13.97 x 0.99988	+/- 0.00	x 1.0052	= 23.18
Total Gross Standard Volume						481.05
SW Barrels:						2.41
Total Net Standard Volume:						478.64

API Volume Calculation Override ☐

WATER LINE TO TODD SWD

GAS
METER

ROAD




PRODUCTION SYSTEM - OPEN

1. Oil-sales hand run.
2. Seal requirements.
 - A. Production phase and sales phase SST #1
 1. All valves 2,4,6 and 7 sealed open
 - B. Sales phase.
 1. Valves 1,2,3,6 and 7 on SST #1 sealed closed
 2. Valves 4,on SST #2 sealed closed

NOTE: Valves 2 are 1 inch gas rolling lines.

N

	upDATE 5-3-07
SAND DUNES AREA EDDY COUNTY, NEW MEXICO	
TODD 27 M TANK BATTERY SEC 27 - T23S, R31E FLOW DIAGRAM	