

UNITED STATES  
DEPARTMENT OF THE INTERIOR  
BUREAU OF LAND MANAGEMENT

## WELL COMPLETION OR RECOMPLETION REPORT AND LOG

FORM APPROVED  
OMB NO. 1004-0137  
Expires: March 31, 2007

1a. Type of Well ☒ Oil Well ☐ Gas Well ☐ Dry ☐ Other  
b. Type of Completion ☒ New Well ☐ Work Over ☐ Deepen ☐ Plug Back ☐ Diff. Resrv.  
Other \_\_\_\_\_

2 Name of Operator  
BEPCO, L. P.

3. Address  
P. O. Box 2760 Midland TX 79702

3.a Phone No. (Include area code)  
(432)683-2277

4 Location of Well (Report location clearly and in accordance with Federal requirements)\*

At Surface UL O, 1200' FSL & 2080' FEL, Sec. 1, T23S, R30E

At top prod. interval reported below SAME

At total depth SAME

14 Date Spudded  
01/19/2007

15. Date T.D Reached  
02/05/2007

16. Date Completed  
☐ D & A ☒ Ready to Prod.  
03/04/2007

5. Lease Serial No.  
NMNM 03884B

6. If Indian, Allottee or Tribe Name

7. Unit or CA Agreement Name and no.  
NMNM70965

8 Lease Name and Well No.

JAMES RANCH UNIT 62

9. API Well No  
30-015-35340

10. Field and Pool, or Exploratory  
QUAHADA RIDGE, SE (DELAWARE)

11. Sec., T., R., M., on Block and  
Survey or Area SEC 1, T23S, R30E

12. County or Parish  
EDDY

13. State  
NM

17. Elevations (DF, RKB, RT, GL)\*  
3286' GR

18. Total Depth. MD 7800'  
TVD

19. Plug Back T.D.: MD 7718'  
TVD

20. Depth Bridge Plug Set: MD  
TVD

21. Type of Electric & Other Mechanical Logs Run (Submit copy of each)  
GR-CNL-LDT; GR-CFL-AIT; GR

22. Was well cored? ☒ No ☐ Yes (Submit analysis)  
Was DST run? ☒ No ☐ Yes (Submit analysis)  
Directional Survey? ☒ No ☐ Yes (Submit copy)

## 23 Casing and Liner Record (Report all strings set in well)

Hole Size	Size/Grade	Wt. (#/ft.)	Top (MD)	Bottom (MD)	Stage Cementer Depth	No. of Sks & Type of Cement	Slurry Vol. (BBL)	Cement Top*	Amount Pulled
14-3/4"	11-3/4"	42#	0	535'		380		0'	
11"	8-5/8"	32#	0	3871'		1125		0'	
7-7/8"	5-1/2"	17# &	0	7800'	5396'	340		4584' BY	
		15.5#						CBL	

## 24. Tubing Record

Size	Depth Set (MD)	Packer Depth (MD)	Size	Depth Set (MD)	Packer Depth (MD)	Size	Depth Set (MD)	Packer Depth (MD)
2-7/8"	6898'							

## 25 Producing Intervals

Formation	Top	Bottom	Perforated Interval	Size	No. Holes	Perf Status
A) DELAWARE	7312'	7618'	7312-7320"	0.470	16	Producing
B)			7474-7480'	0.470	12	Producing
C)			7610-7618'	0.470	12	Producing
D)						

## 26. Perforation Record

## 27 Acid, Fracture, Treatment, Cement Squeeze, Etc

Depth Interval	Amount and Type of Material
7474-7618'	100,454 gallons produced water & 9,917 lbs 14/30 Lite Prop
7312-7320'	37,982 gallons Lightning 2500 & 109,456 lbs of 16/30 Ottawa sand & 34,343 lbs of 16/30 Super LC

## 28. Production - Interval A

Date First Produced	Test Date	Hours Tested	Test Production	Oil BBL	Gas MCF	Water BBL	Oil Gravity Corr API	Gas Gravity	Production Method
3/04/07	3/10/07	24	→	96	82	362			PUMPING
Choice Size	Tbg Press Flwg SI	Csg. Press.	24 Hr Rate	Oil BBL	Gas MCF	Water BBL	Gas Oil Ratio	Well Status	
12/64"	260	35	→	96	82	362		PUMPING	

## Production - Interval B

Date First Produced	Test Date	Hours Tested	Test Production	Oil BBL	Gas MCF	Water BBL	Oil Gravity Corr API	Gas Gravity	Production Method
			→						
Choke Size	Tbg Press Flwg SI	Csg Press	24 Hr Rate	Oil BBL	Gas MCF	Water BBL	Gas Oil Ratio	Well Status	
			→						

(See Instructions and spaces for additional data on page 2)

## 28b. Production - Interval C

Date First Produced	Test Date	Hours Tested	Test Production →	Oil BBL	Gas MCF	Water BBL	Oil Gravity Corr. API	Gas Gravity	Production Method
Choke Size	Tbg. Press. Flwg SI	Csg. Press.	24 Hr Rate →	Oil BBL	Gas MCF	Water BBL	Gas : Oil Ratio	Well Status	

## 28c. Production - Interval D

Date First Produced	Test Date	Hours Tested	Test Production →	Oil BBL	Gas MCF	Water BBL	Oil Gravity Corr. API	Gas Gravity	Production Method
Choke Size	Tbg. Press. Flwg SI	Csg. Press.	24 Hr Rate →	Oil BBL	Gas MCF	Water BBL	Gas : Oil Ratio	Well Status	

## 29. Disposition of Gas (Sold, used for fuel, vented, etc.)

SOLD

## 30. Summary of Porous Zones (Include Aquifers):

Show all important zones or porosity and contents thereof. Cored intervals and all drill-stem tests, including depth interval tested, cushion used, time tool open, flowing and shut-in pressures and recoveries.

## 31. Formation (Log) Markers

Formation	Top	Bottom	Descriptions, Contents, etc.	Name	Top
					Meas. Depth
				T/RUSTLER	180'
				T/SALT	640'
				B/SALT	3646'
				T/LAMAR (DELAWARE)	3881'
				T/BONE SPRING LIME	7692'

## 32. Additional remarks (include plugging procedure):

## 33. Indicate which items have been attached by placing a check in the appropriate boxes:

- ☒ Electrical/Mechanical Logs (1 full set req'd.)   
 ☐ Geological Report   
 ☐ DST Report   
 ☐ Directional Survey  
☐ Sundry Notice for plugging and cement verification   
 ☐ Core Analysis   
 ☐ Other

## 34. I hereby certify that the foregoing and attached information is complete and correct as determined from all available records (see attached instructions)\*

Name (please print) Ann Moore Title Production ClerkSignature  Date 03/21/2007

Title 18 U.S.C. Section 101 and Title 43 U.S.C. Section 1212, make it a crime for any person knowingly and willfully to make to any department or agency of the United States and false, fictitious or fraudulent statements or representations as to any matter within its jurisdiction.

## DISTRICT I

1626 N. French Dr., Hobbs, NM 88240

## DISTRICT II

1301 W. Grand Avenue, Artesia, NM 88210

## DISTRICT III

1000 Rio Brazos Rd., Aztec, NM 87410

## DISTRICT IV

1220 St. Francis Dr., Santa Fe, NM 87505

State of New Mexico  
Energy, Minerals and Natural Resources Department

## OIL CONSERVATION DIVISION

1220 South St. Francis Dr.  
Santa Fe, New Mexico 87505

Form C-102

Revised October 12, 2005

Submit to Appropriate District Office

State Lease - 4 Copies

Fee Lease - 3 Copies

☐ AMENDED REPORT

## WELL LOCATION AND ACREAGE DEDICATION PLAT

API Number 30-015-35340	Pool Code 50443	Pool Name Quahada Ridge, SE (Delaware)
Property Code 02884	Property Name JAMES RANCH UNIT	Well Number 62
OGRID No. 001801	Operator Name BEPCO, L.P.	Elevation 3286'

## Surface Location

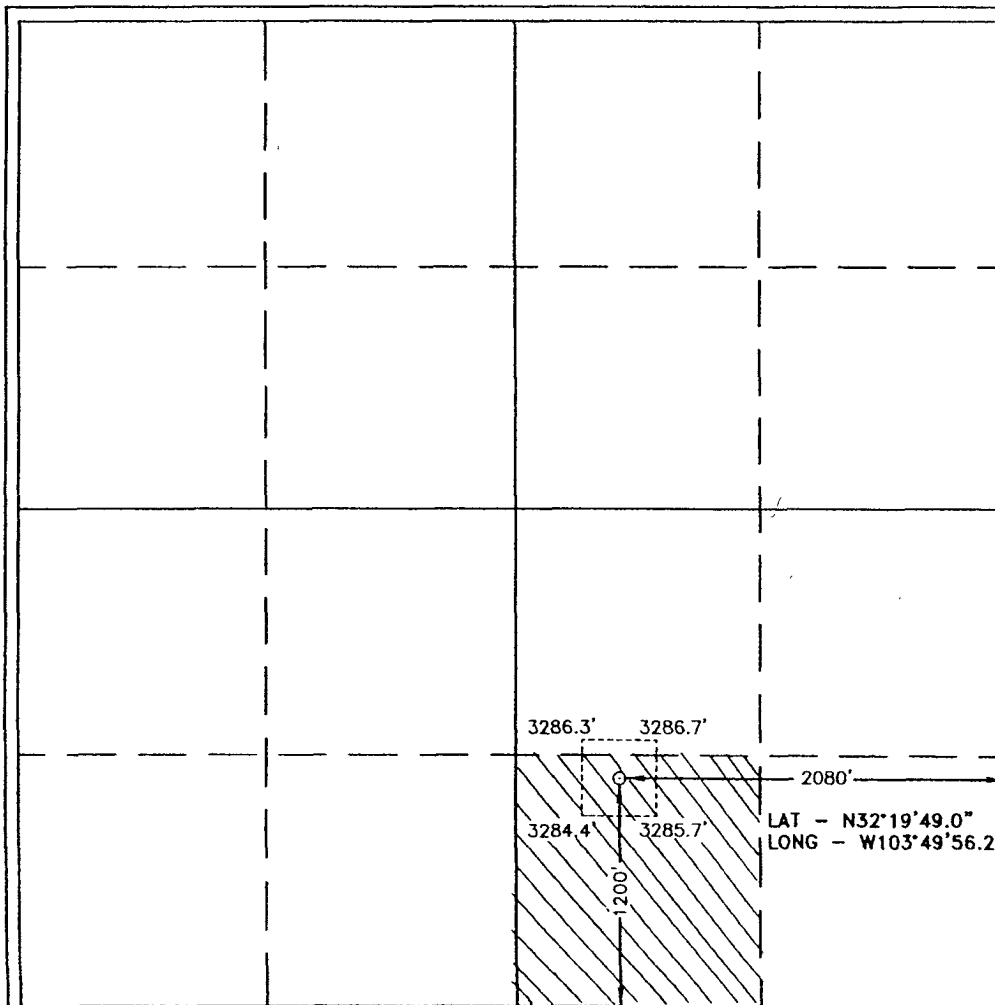
UL or lot No.	Section	Township	Range	Lot Idn	Feet from the	North/South line	Feet from the	East/West line	County
0	1	23 S	30 E		1200	SOUTH	2080	EAST	EDDY

## Bottom Hole Location If Different From Surface

UL or lot No.	Section	Township	Range	Lot Idn	Feet from the	North/South line	Feet from the	East/West line	County

Dedicated Acres 40	Joint or Infill N	Consolidation Code	Order No.
-----------------------	----------------------	--------------------	-----------

NO ALLOWABLE WILL BE ASSIGNED TO THIS COMPLETION UNTIL ALL INTERESTS HAVE BEEN CONSOLIDATED  
OR A NON-STANDARD UNIT HAS BEEN APPROVED BY THE DIVISION



## OPERATOR CERTIFICATION

I hereby certify that the information contained herein is true and complete to the best of my knowledge and belief, and that this organization either owns a working interest or unleased mineral interest in the land including the proposed bottom hole location pursuant to a contract with an owner of such a mineral or working interest, or to a voluntary pooling agreement or a compulsory pooling order heretofore entered by the division.

*Gary G. Gerhard* 1/26/07  
Signature Date

Gary G Gerhard

Printed Name

## SURVEYOR CERTIFICATION

I hereby certify that the well location shown on this plat was plotted from field notes of actual surveys made by me or under my supervision, and that the same is true and correct to the best of my belief.

March 5, 2008  
Date Surveyed  
Signature of Professional Surveyor  
7977  
Certificate No. Gary L. Jones 7977

BASIN SURVEYS

