

UNITED STATES **OPERATOR'S COPY**  
DEPARTMENT OF THE INTERIOR  
BUREAU OF LAND MANAGEMENT

FORM APPROVED  
OMB NO. 1004-0135  
Expires: November 30, 2000

**SUNDRY NOTICES AND REPORTS ON WELLS**

*Do not use this form for proposals to drill or to re-enter an abandoned well. Use Form 3160-3 (APD) for such proposals.*

**SUBMIT IN TRIPLICATE - Other instructions on reverse side**

1. Type of Well

☐ Oil Well ☒ Gas Well ☐ Other

2. Name of Operator

OXY USA WTP Limited Partnership

3a. Address

P.O. Box 50250, Midland, TX 79710-0250

3b. Phone No. (include area code)

915-685-5717

4. Location of Well (Footage, Sec., T., R., M., or Survey Description)

900 FNL 660 FEL NENE(A) Sec 29 T17S R31E

5. Lease Serial No.

LC-029395-B

6. If Indian, Allottee or Tribe Name

7. If Unit or CA/Agreement, Name and/or No.

8. Well Name and No.

OXY Jamoca Federal #1

9. API Well No.

30-015-32265

10. Field and Pool, or Exploratory Area

Cedar Lake Morrow, N.

11. County or Parish, State

Eddy NM

12. CHECK APPROPRIATE BOX(ES) TO INDICATE NATURE OF NOTICE, REPORT, OR OTHER DATA

TYPE OF SUBMISSION

☐ Notice of Intent

☒ Subsequent Report

☐ Final Abandonment Notice

TYPE OF ACTION

☐ Acidize

☐ Alter Casing

☐ Casing Repair

☐ Change Plans

☐ Convert to Injection

☐ Deepen

☐ Fracture Treat

☐ New Construction

☐ Plug and Abandon

☐ Plug Back

☐ Production (Start/Resume)

☐ Reclamation

☐ Recomplete

☒ Temporarily Abandon

☐ Water Disposal

☐ Water Shut-Off

☒ Well Integrity

☒ Other Perf Add'l

Morrow. Simulate.

Test & TA

13. Describe Proposed or Completed Operation (clearly state all pertinent details, including estimated starting date of any proposed work and approximate duration thereof. If the proposal is to deepen directionally or recompleat horizontally, give subsurface locations and measured and true vertical depths of all pertinent markers and zones. Attach the Bond under which the work will be performed or provide the Bond No. on file with BLM/BIA. Required subsequent reports shall be filed within 30 days following completion of the involved operations. If the operation results in a multiple completion or recompleat in a new interval, a Form 3160-4 shall be filed once testing has been completed. Final Abandonment Notices shall be filed only after all requirements, including reclamation, have been completed, and the operator has determined that the final site is ready for final inspection.)

See Attached

14. I hereby certify that the foregoing is true and correct  
Name (Printed/Typed)

David Stewart

Title

Sr. Regulatory Analyst

Date

4/30/07

THIS SPACE FOR FEDERAL OR STATE OFFICE USE

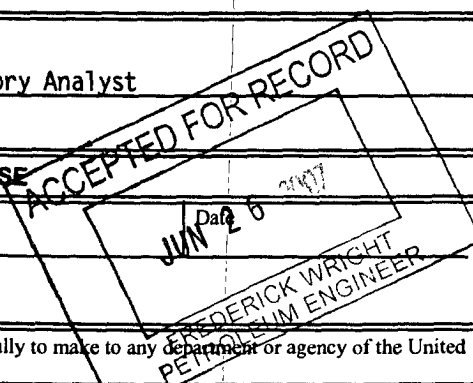
Approved by

Title

Conditions of approval, if any, are attached. Approval of this notice does not warrant or certify that the applicant holds legal or equitable title to those rights in the subject lease which would entitle the applicant to conduct operations thereon.

Office

Title 18 U.S.C. Section 1001, and Title 43 U.S.C. Section 1212, makes it a crime for any person knowingly and willfully to make to any department or agency of the United States any false, fictitious or fraudulent statements or representations as to any matter within its jurisdiction.



## OXY JAMOCA FEDERAL #1

**02/14/2007** CMIC: henrich/barton

hold safety meeting, set in matting boards, miru key p/u #347,440# sitp, 50# sicp, bled csg. down, miru kill truck, load tbg. w/40 bbls. Of 6% kcl containing clay stabilizers & pkr. fluid, nd tree, nu 5k hyd. bop & test (OK), try to release pkr. w/no success, release on/off tool & let well equalize, latch onto pkr. & release, pooh w/tbg. & pkr., tcp guns were still attached under pkr., did not have a safety clamp for perf. guns, shut well in w/guns & 1 jt. of tbg. in hole, sdon. (no hes events)

**02/15/2007** CMIC: henrich/barton

hold safety meeting, slight blow on well, pump 20 bw, lay down tcp guns, miru halliburton w/ truck, rih w/5.5" 10k cibp, correlate to open hole log & set cibp @ 11,600', pooh, load csg. w/104 bbls. 6% treated kcl & test cip & csg. to 2000# (OK), rih w/4" perf. Gun loaded w/premium charges @ 2 spf, correlate to open hole log & perforate morrow formation from 11,558' - 11,562' (10 holes) did not see any press. & well did not go on vac. when shot, pooh, rd w/ rih 40 ts. 2 7/8" tbg. for kill string, sisd. (no hes events)

**02/16/2007** CMIC: henrich/barton

hold safety meeting, 0# sip, pooh w/kill string, change bop rams to 3.5", unload, rack & tally 375 jts. 3.5" 9.3# p-110 & L-80 frac tbg., rih w/prod. pkr., 2 3/8" blast jt. & 360 jts. 3.5" tbg., tag cibp @ 11,600', lay down 1 jt., sisd. (no hes events)

**02/17/2007** CMIC: henrich/barton

Open well up with 0# of tubing & casing pressure. PUH 3 joints and set packer @ 11,480' on 356 joints of 3-1/2" N-80 tubing. Load and test back side to 1,000# - OK. Nipple up frac-stack and swab. Make 16 swab runs. Recover 42 bbls. of fluid. Starting fluid level surface. Ending fluid level @ 4,400'. SION Prep to acidize in am.

**02/18/2007** CMIC: henrich/barton

Open well up with 0# of tubing pressure. Rig up Halliburton. Acidize morrow perfs 11,558' - 11,562' 10 perforations. Initial formation break at 4,870#. Pump 83 bbls. of 71/2% HCL acid with 20, 7/8" OD - 1.3 SG balls evenly spaced in acid. Loose V-12. Acid not on formation. Shut down. Rig down pump truck. Wait on replacement pump truck. Rig up new truck. Drop 5 ball sealers ahead of the remaining 12 bbls of acid. Ball out formation while on flush. Surge balls off formation and finish flush. ISIP - 4790# 5 min SI - 4416# 10 min SI - 4292# 15 minute SI - 4160# Avg press 5340# Max press 8000# Avg rate 3.5 bpm Max rate 3.8 bpm Total load to recover. 198 bbls. Rig down Halliburton. Rig up swab. Make 15 swab runs. Recover 38 bbls. of fluid. Starting fluid level surface. Ending fluid level @ 5,800'. Load left to recover 160 bbls. SION Prep to frac on 2-19-07.

**02/19/2007** CMIC: henrich/barton

Open well up with tubing on vacuum. Rig up Halliburton to frac morrow perfs 11,558' - 11,562' 10 perforations. Pressure back side to 1000#. Frac Morrow with 10,500# of Versaprop and 48 tons of CO2. Avg press 8275# Max Press 9100# Avg Rate 15.9 bpm. Max rate 22 bpm. Max sand concentration was 1.5 ppg (5104 gal) ISIP - 6309# 5 min - 5734# 10 min - 5615# 15 min - 5540# Load to recover from frac 208 bbls. Load left to recover from frac and acid - 368 bbls. Rig down Halliburton, blow down tubing and backside. Rig up blow down line. Start blow down at 12:00pm. First 6 hours of flowing recover 35 bbls. Well flowing on a 20/64 choke with 300# of tubing pressure.

**02/20/2007** CMIC: henrich/barton

After 18 hours of flow, the well was on a 14/64 choke with 300# of tubing pressure. Well ceased to flow after 20 hours. Rig up swab and make 9 swab runs. Initial fluid level 7300'. Ending fluid level seat nipple (11480'). Recover 25 bbls of fluid. 343 bbls of load left to recover.

**02/21/2007** CMIC: henrich/barton

Open well up with 180# SITP and 0# SICP Rig up Pro Wireline. RIH W/ 1 1/2" sinker bar and tag @ 11582'. (indicates no fill) Set a 1.87 plug in top nipple. Rig down Pro. Release on/off tool. Start out of hole W/ 3 1/2" work string. Lay down 285 joints. (80 Joints left in hole) Prep to finish out of hole.

**02/22/2007** CMIC: henrich/barton

Finish out of hole W/ 3-1/2" tubing. Change rams in BOP. Pick up overshot and RIH 351 joints of W/ 2-7/8" tubing. Latch on to on/off tool. Rig up swab down to 7000'. SION Prep to pull blanking plug.

**02/23/2007** CMIC: henrich/barton

Rig up Pro Wireline to pull blanking plug. Pull out of hole with equalizer plug. Run back in hole and latch onto plug. Jar on plug for 1.5 hours and sheared off. Rig down Pro and rig up swab. Swab well down from 6600' to 8600'. Tubing had slight gas blow. Rig down swab, rig up Pro. Run in hole and latch onto plug and jar for 45 minutes. Shear off of plug. Rig down Pro and rig up swab. Run in hole with swab, hit fluid at 6800'. Make swab run from 8300'. Tubing still had slight blow. Rig down swab, rig up Pro. Run in hole and latch onto plug, pull plug. SION. Prep to swab - flow well on 2-26-07

**02/26/2007** CMIC: henrich/barton

Well had 0# SICP and 130# SITP. Swab well. Make 10 swab runs. 1st run fluid level @ 7900 2nd run fluid level @ 8700 3rd run fluid level @ 9400 All other runs had scattered fluid to seat nipple. Recover 30 bbls. LTR=313 SION Prep to make an attempt at acquiring a sustained flow and pressure.

**02/27/2007** CMIC: henrich/barton

Well had 200# SITP 0# SICP Open well up on a 16/64. Well died in 1 hr. Swab well down in one run. Make 4 swab runs. Recover 1 bbl of fluid. Could not establish a rate or pressure. Load left to recover - 312 bbls. SION Prep to swab-flow well.

**02/28/2007** CMIC: henrich/barton

Well had 180# SICP. Flow well on a 16/64 choke for 1.5 hours. Tubing pressure 0. Rig up swab. Fluid level 10,800 scattered to seat nipple. Recover 2 bbls of fluid. Make 1 run per hour for the next two hours. Recover 0 bbls of fluid. Slight blow on tubing. Rig down swab. Nipple down BOP. Nipple up tree. Shut well in. Prep to RDMO in AM.

**03/01/2007** CMIC: henrich/barton

Rig down move off. Leave well SI

**04/13/2007** CMIC: barton

MIRU Blow down well. Change rams in BOP ND tree. NU BOP. Equalize tubing. Unset packer and start out of hole. Shut down due to weather.

**04/16/2007** CMIC: barton

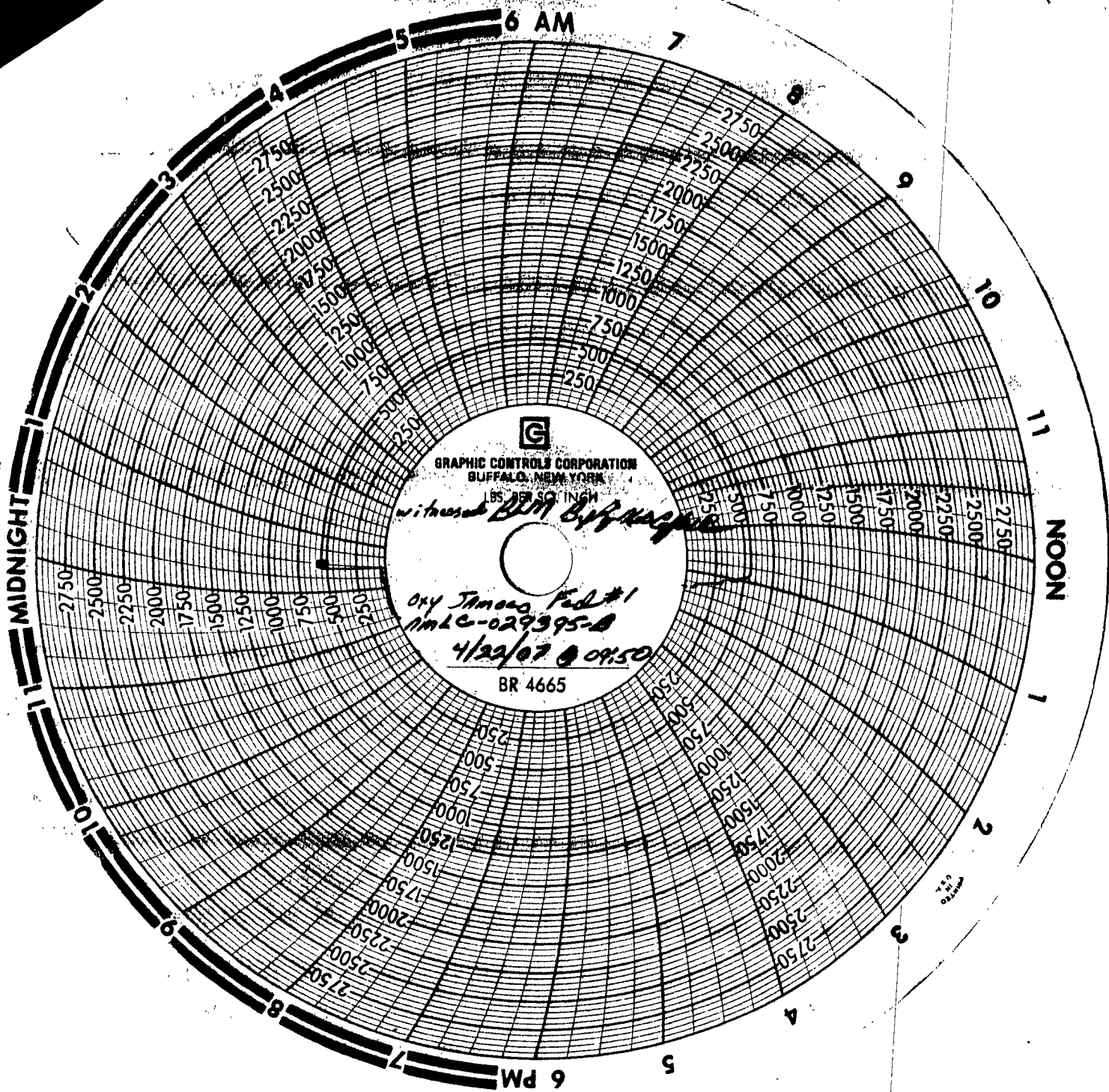
Open well up with 20# of SI tubing and casing pressure. Blow down well. Finish out of hle. Lay dow 351 joints of 2 7/8" L-80 tubing. Rig up Baker wireline. Make gauge ring run to 11,558' - OK. RIH W/ 5.5" Alpha CIBP. Set plug @ 11,500'. (58' above top perf).

**04/20/2007** CMIC: barton

Notify & schedule MIT with BLM for Monday the 23rd.

**04/23/2007** CMIC: barton

Tom Hines met Key Energy services and BLM representative on location. MIT was conducted successfully. Original chart sent to Midland. Well is in Temporary Abandonment.



RECEIVED

MAY -2 PM 2:48