

2 Submit 3 Copies To Appropriate District Office
District I
1625 N. French Dr., Hobbs, NM 88240
District II
1301 W. Grand Ave., Artesia, NM 88210
District III
1000 Rio Brazos Rd., Aztec, NM 87410
District IV
1220 S. St. Francis Dr., Santa Fe, NM 87505

State of New Mexico
Energy, Minerals and Natural Resources

Form C-103
Revised June 10, 2003

OIL CONSERVATION DIVISION
1220 South St. Francis Dr.
Santa Fe, NM 87505

WELL API NO.
30.015.00899

5. Indicate Type of Lease
STATE ☒ FEE ☐

6. State Oil & Gas Lease No.

7. Lease Name or Unit Agreement Name

EMPIRE ABO UNIT "S"

8. Well Number
7

9. OGRID Number

10. Pool name or Wildcat
ABO

SUNDRY NOTICES AND REPORTS ON WELLS

(DO NOT USE THIS FORM FOR PROPOSALS TO DRILL OR TO DEEPEN OR PLUG BACK TO A DIFFERENT RESERVOIR. USE "APPLICATION FOR PERMIT" (FORM 101) FOR SUCH PROPOSALS.)

1. Type of Well:

Oil Well ☒ Gas Well ☐ Other ☐

2. Name of Operator

BP AMERICA PRODUCTION COMPANY

3. Address of Operator

P.O. BOX 1089 EUNICE, NM 88231

4. Well Location

Unit Letter F : 2304' feet from the S line and 2310 feet from the E line

Section 16

Township 18S

Range 28E

NMPM EDDY

County

11. Elevation (Show whether DR, RKB, RT, GR, etc.)
3457' GR

12. Check Appropriate Box to Indicate Nature of Notice, Report or Other Data

NOTICE OF INTENTION TO:

PERFORM REMEDIAL WORK ☐ PLUG AND ABANDON ☒

TEMPORARILY ABANDON ☐ CHANGE PLANS ☐

PULL OR ALTER CASING ☐ MULTIPLE COMPLETION ☐

OTHER: ☐

SUBSEQUENT REPORT OF:

REMEDIAL WORK ☐ ALTERING CASING ☐

COMMENCE DRILLING OPNS. ☐ PLUG AND ABANDONMENT ☐

CASING TEST AND CEMENT JOB ☐

OTHER: ☐

13. Describe proposed or completed operations. (Clearly state all pertinent details, and give pertinent dates, including estimated date of starting any proposed work). SEE RULE 1103. For Multiple Completions: Attach wellbore diagram of proposed completion or recompletion.

TD: 6007' PB: 5952' CSG: 4 1/2" PERFS: 5646'-5656' TOC @ SUFRACE

1. MIRU PULLING UNIT ND WH NU BOP

2. UNSET PKR AND POOH W/ TBG RIH AND SET CIBP @ 5596 W/ 35' CMT

3. CIRCULATE 9.5# KCL MUD PRESSURE TEST TO 300#

4. PUH SPOT 35 SX CMT ACROSS GLORIETA 3174'-3274' WOC AND TAG

5. PUH SPOT 35 SX CMT ACROSS 8 5/8" CSG SHOE 1548'-1448' 100' PLUG

6. PUH SPOT 35 SX CMT ACROSS YATES 214'-314' 100' PLUG WOC AND TAG

7. PUH SPOT 10 SX CMT FORM 60' TO SURFACE

8. WOC 24 HRS AND TAG

9. CUT OFF WELL HEAD AND ANCHORS CLEAN LOCATION RD

I hereby certify that the information above is true and complete to the best of my knowledge and belief.

SIGNATURE

Jim Pierce

TITLE Wells Team Lead

DATE 10/2/2003

Type or print name

Jim Pierce

E-mail address:

Telephone No. (505) 677-3642

(This space for State use)

APPROVED BY

Jim Pierce

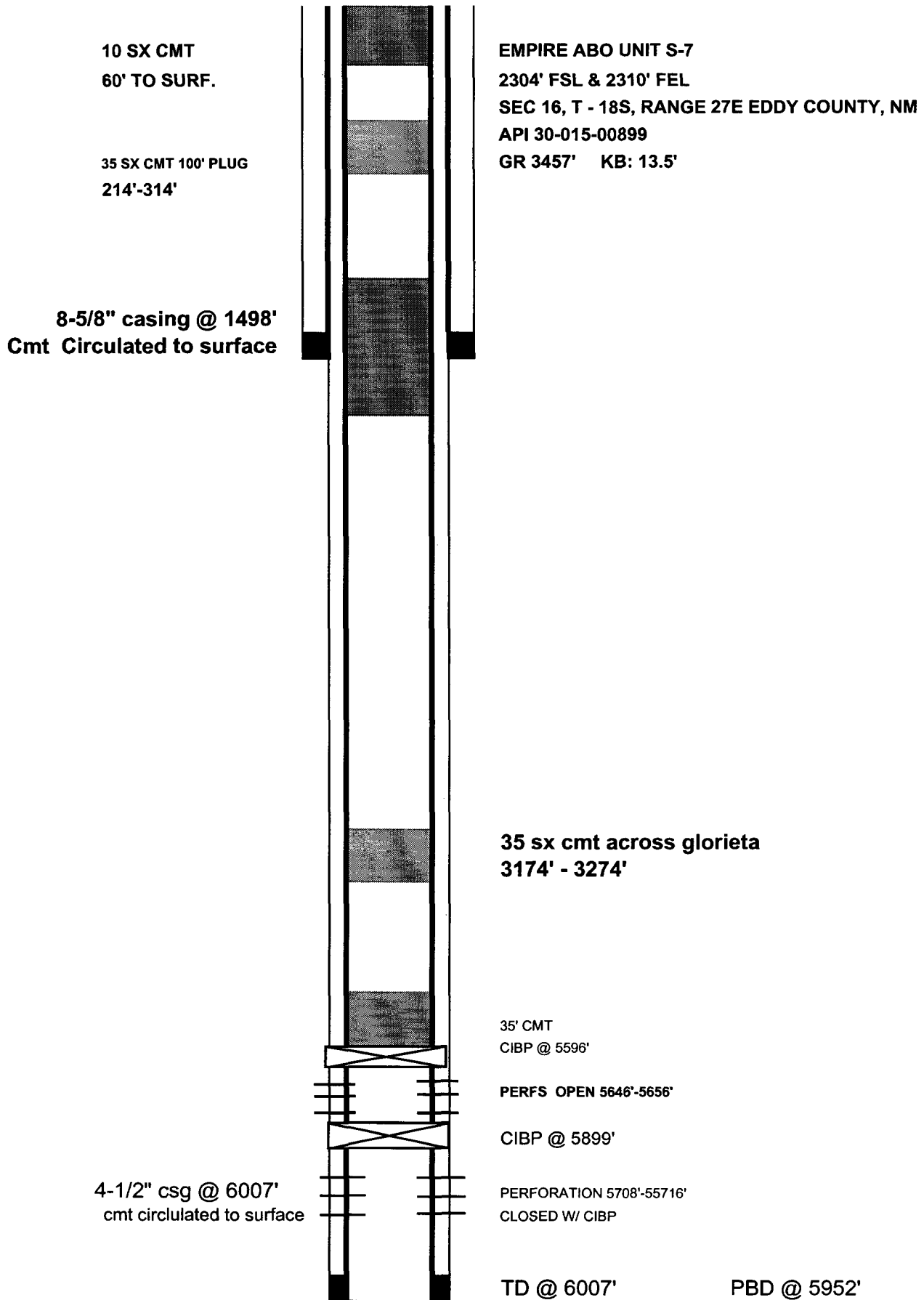
TITLE

DATE

Conditions of approval, if any:

APPROVED OCT 16 2003

WELLBORE SCHEMATIC



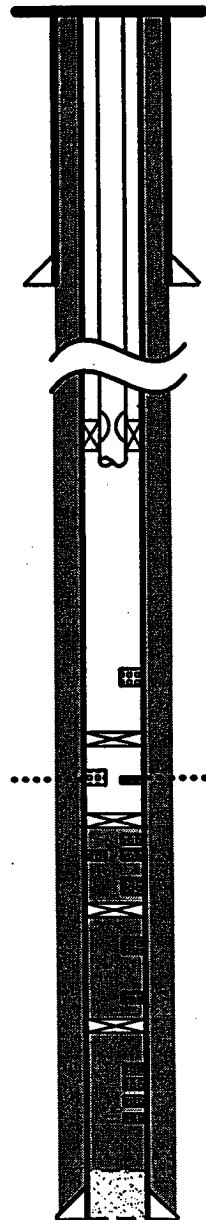
PLUGGING PROCEDURE
EAU S-7

TD: 6007' KB: 13.5 CSG: 4 ½" – 9.5#
PB: 5952' PERFS: 5646'-5656'

1. MIRU PULLING UNIT ND WH NU BOP UNSET PKR POOH
2. RIH W/ TBG AND SET CIBP @ 5596' SPOT 35' CMT ON TOP
3. CIRCULATE 9.5# KCL MUD PRESSURE TEST CSG TO 300#
4. PUH AND SPOT 35 SX CMT (100' PLUG) FROM 3174'-3274' ACROSS GLORITA WOC AND TAG
5. PUH SPOT 35 SX CMT (100' PLUG) ACROSS CSG SHOE FROM 1548'-1448' AT 8 58" CSG SHOE WOC AND TAG
6. PUH SPOT 35 SX CMT FROM 214'-314' ACROSS YATES
7. PUH SPOT 10 SX CMT FROM 60' TO SURFACE
8. WOC 24 HRS AND TAG
9. CUT OFF WELL HEAD AND ANCHORS CLEAN LOCATION RD

Empire Abo Unit "S" 7

Potential
Perforation
Zones



- KB at 3457' above sea level (Used as the Datum)
Well is currently shut in
- Top of Cement at surface
- 8-5/8" - 24# casing set at 1498' (11" hole)
- SN set at 5500', PKR set at 5504'
Tubing: 178 jts, 2 3/8"
- Perforations 5646' - 5656' w/ 2 JSPF
- CIBP set at 5690'
- Top of Abo at 5711', Perforations 5711' - 5716' Squeezed off,
5708' - 5716' Closed off w/ CIBP
- CR set at 5740' w/ cmt beneath
- Perforations 5747' - 5752' Squeezed off
- Perforations 5756' - 5762' Squeezed off, Re-perforated, Re-Squeezed
- Perforations 5774' - 5784' Squeezed off
- CR set at 5793' w/ cmt beneath
- Perforations 5810' - 5820' Squeezed off
- Perforations 5842' - 5850' Squeezed off
- CR set at 5864' w/ cmt beneath
- Perforations 5887' - 5892' Squeezed off
- Perforations 5896' - 5902' Squeezed off
- Perforations 5906' - 5912' Squeezed off
- Perforations 5917' - 5922' Squeezed off
- PBDT at 5952'
- 4-1/2" - 9.5# casing set at 6007' (7 7/8" hole)

Well No.	S-7
----------	-----

Type of Well

X	Oil
	Gas
	Other

Vell API No. 30-015-00899

Lease Name	Empire Abo Unit "S"
------------	---------------------

Type of Lease

State
Fee

Well Location	2304	ft	From South Line	2310	ft	From East Line
Section:	16	Township:	18S	Range:	27E	County: Eddy

Elevation	3457	ft above sea level (RDB)
Top of Abo	2245	ft below see level
Total Depth	6007	ft
PBTD	5952	ft
KB	13.5	ft above GL
Datum	KB	(All depths based on KB)

Tubing	
# of Jts	178
Size	2 3/8"
Weight	
Thread	
Class	

Well Status	
	Flowing well
	Pumping wel
X	Shut in

CASINGS					
string #	Hole sz.	Depth	Casing Dmtr.	wght.	
1	11"	1498 ft	8.625 in	24#	
2	7 7/8"	6007 ft	4.5 in	9.5#	

OTHER EQUIPMENT (BPs, ETC..)			
Name	Depth	Casing Dmtr.	Notes
TOC	surface	4.5 in	
CR	5864 ft	4.5 in	w/ cmt below
CR	5793 ft	4.5 in	w/ cmt below
CR	5740 ft	4.5 in	w/ cmt below
CIBP	5690 ft	4.5 in	
PKR	5504 ft	4.5 in	Lokset
SN	5500 ft	4.5 in	

Pay Zone				
Top of Abo	5702	ft	to	Bottom of Well 5952 ft
Top of Abo	5711	ft	Reported	

PERFORATIONS					
Start Depth	End Depth	Jet Shots per Foot	Date of Perforation	Comments	
5711 ft	5716 ft	2 1/2	12/25/1962	Closed 8/27/79 w/ cmt	
5747 ft	5752 ft	2 1/2	12/25/1962	Closed 8/27/79 w/ cmt	
5756 ft	5762 ft	2 1/2	12/25/1962	Closed 8/27/79 w/ cmt	
5774 ft	5784 ft	2 1/2	12/25/1962	Closed 8/27/79 w/ cmt	
5842 ft	5850 ft	2 1/2	12/25/1962	Closed 8/27/79 w/ cmt	
5887 ft	5892 ft	2 1/2	12/25/1962	Closed 8/27/79 w/ cmt	
5896 ft	5902 ft	2 1/2	12/25/1962	Closed 8/27/79 w/ cmt	
5906 ft	5912 ft	2 1/2	12/25/1962	Closed 8/27/79 w/ cmt	
5917 ft	5922 ft	2 1/2	12/25/1962	Closed 8/27/79 w/ cmt	
2275 ft		2 Squeeze Holes	8/31/1979	Squeezed 9/4/79	
5810 ft	5820 ft	2	9/7/1979	Closed 9/13/79 w/ cmt	
5756 ft	5762 ft	2	9/14/1979	Closed 9/20/79 w/ cmt	
5708 ft	5716 ft	2	9/21/1979	Closed 10/1/79 w/CIBP	
5646 ft	5656 ft	2	10/1/1979		

COMMENTS
This well has been perforated to the top of the Abo. There are no further opportunities to perforate in this well.