

District I
1625 N. French Dr., Hobbs, NM 88240
District II
1301 W. Grand Avenue, Artesia, NM 88210
District III
1000 Rio Brazos Road, Aztec, NM 87410
District IV
1220 S. St Francis Dr., Santa Fe, NM 87505

State of New Mexico
Energy Minerals and Natural Resources

Form C-101
May 27, 2004

Oil Conservation Division
1220 South St. Francis Dr.
Santa Fe, NM 87505

Submit to appropriate District Office

☐ AMENDED REPORT

APPLICATION FOR PERMIT TO DRILL, RE-ENTER, DEEPEN, PLUGBACK, OR ADD A ZONE

¹ Operator Name and Address Devon Energy Production Company, L. P. 20 North Broadway Oklahoma City, OK 73102-8260		² OGRID Number 6137
³ Property Code 300635	⁴ Property Name Cotton Draw Unit	⁵ API Number 30-015-36196
⁹ Proposed Pool 1 19370 Cotton Draw; Brushy Canyon		¹⁰ Proposed Pool 2 Well No. 113

Surface Location

UL or lot no.	Section	Township	Range	Lot Idn	Feet from the	North/South line	Feet from the	East/West line	County
E	36	24S	31E		1980	North	660	West	Eddy

⁸ Proposed Bottom Hole Location If Different From Surface

UL or lot no	Section	Township	Range	Lot Idn	Feet from the	North/South line	Feet from the	East/West line	County

Additional Well Information

¹¹ Work Type Code N	¹² Well Type Code O	¹³ Cable/Rotary R	¹⁴ Lease Type Code S	¹⁵ Ground Level Elevation 3493' GL
¹⁶ Multiple No	¹⁷ Proposed Depth 9100'	¹⁸ Formation Delaware; Brushy Canyon	¹⁹ Contractor	²⁰ Spud Date 4/15/08
Depth to Groundwater 100'		Distance from nearest fresh water well		Distance from nearest surface water 1000' or more
Pit: Liner: Synthetic <input type="checkbox"/> _____ mils thick Clay <input type="checkbox"/> Pit Volume: _____ bbls Drilling Method: Fresh Water <input checked="" type="checkbox"/> Brine <input checked="" type="checkbox"/> Diesel/Oil-based <input type="checkbox"/> Gas/Air <input type="checkbox"/>				
Closed-Loop System <input checked="" type="checkbox"/>				

²¹ Proposed Casing and Cement Program

Hole Size	Casing Size	Casing weight/foot	Setting Depth	Sacks of Cement	Estimated TOC
17 1/2"	13 3/8"	48# H-40 ST&C	0' - 850'	700 sx Cl C	Surface
11"	8 5/8"	32# I-55 LT&C	0' - 4400'	1325 sx Cl C	Surface
7 7/8"	5 1/2"	15# & 17# I55	0' - 9100'	1105 sx Cl H	500' Inside

²² Describe the proposed program. If this application is to DEEPEN or PLUG BACK, give the data on the present productive zone and proposed new productive zone. Describe the blowout prevention program, if any. Use additional sheets if necessary.

13 3/8" Surface

Lead w/ 450 sacks (35:65) Poz (Fly Ash):Premium Plus C Cement + 0.125 lbs/sack Cello Flake + 6% bwoc Bentonite + 2% bwoc Calcium Chloride + 93.6% Fresh Water

Tail w/ 250 sacks Premium Plus C Cement + 2% bwoc Calcium Chloride + 0.125 lbs/sack Cello Flake + 56.3% Fresh Water

8 5/8" Intermediate

Lead w/1025 sacks (35:65) Poz (Fly Ash):Premium Plus C Cement + 5% bwow Sodium Chloride + 0.125 lbs/sack Cello Flake + 6% bwoc Bentonite + 107.8% Fresh Water

Tail w/300 sacks (60:40) Poz (Fly Ash):Premium Plus C Cement + 5% bwow Sodium Chloride + 0.125 lbs/sack Cello Flake + 0.4% bwoc Sodium Metasilicate + 4% bwoc MPA-1 + 64.7% Fresh Water

²³ I hereby certify that the information given above is true and complete to the best of my knowledge and belief. I further certify that the drilling pit will be constructed according to NMOCD guidelines ☒, a general permit ☐, or an (attached) alternative OCD-approved plan ☐.

Printed name: Judy A. Barnett

Title: Regulatory Analyst

E-mail Address: Judith.Barnett@dmn.com

Date: 2/19/08

Phone: 405-228-8699

OIL CONSERVATION DIVISION

Approved by:

Title:

Approval Date:

Expiration Date:

Conditions of Approval Attached ☐

DISTRICT I
1625 N. French Dr., Hobbs, NM 88240

DISTRICT II
1301 W. Grand Avenue, Artesia, NM 88210

DISTRICT III
1000 Rio Brazos Rd., Aztec, NM 87410

DISTRICT IV
1220 S. St. Francis Dr., Santa Fe, NM 87505

State of New Mexico
Energy, Minerals and Natural Resources Department

Form C-102
Revised October 12, 2005

Submit to Appropriate District Office
State Lease - 4 Copies
Fee Lease - 3 Copies

OIL CONSERVATION DIVISION
1220 South St. Francis Dr.
Santa Fe, New Mexico 87505

☐ AMENDED REPORT

WELL LOCATION AND ACREAGE DEDICATION PLAT

API Number <i>30-015-36126</i>	Pool Code <i>13370</i>	Pool Name <i>Cotton Draw</i> ; BRUSHY CANYON
Property Code <i>300635</i>	Property Name COTTON DRAW UNIT	
OGRID No. 6137	Operator Name DEVON ENERGY PRODUCTION COMPANY LP	Well Number 113
		Elevation 3493'

Surface Location

UL or lot No.	Section	Township	Range	Lot Idn	Feet from the	North/South line	Feet from the	East/West line	County
E	36	24 S	31 E		1980	NORTH	660	WEST	EDDY

Bottom Hole Location If Different From Surface

UL or lot No.	Section	Township	Range	Lot Idn	Feet from the	North/South line	Feet from the	East/West line	County
Dedicated Acres 40		Joint or Infill		Consolidation Code		Order No.			

NO ALLOWABLE WILL BE ASSIGNED TO THIS COMPLETION UNTIL ALL INTERESTS HAVE BEEN CONSOLIDATED
OR A NON-STANDARD UNIT HAS BEEN APPROVED BY THE DIVISION

<p>SURFACE LOCATION Lat - N32°10'32.33" Long - W103°44'16.53" SPC- N.: 428144.734 E.: 725556.038 (NAD-83)</p>	<p>OPERATOR CERTIFICATION</p> <p>I hereby certify that the information contained herein is true and complete to the best of my knowledge and belief, and that this organization either owns a working interest or unleased mineral interest in the land including the proposed bottom hole location pursuant to a contract with an owner of such a mineral or working interest, or to a voluntary pooling agreement or a compulsory pooling order heretofore entered by the division.</p> <p><i>Judy A. Barnett</i> Signature Date Judy A. Barnett 2/14/08 Printed Name Regulatory Analyst</p>
	<p>SURVEYOR CERTIFICATION</p> <p>I hereby certify that the well location shown on this plat was plotted from field notes of actual surveys made by me or under my supervision and that the same is true and correct to the best of my belief.</p> <p>FEBRUARY 1 2008 Date Surveyed Signature of Surveyor Professional Surveyor GARY L. JONES 7977</p>
	<p>Certificate No. Gary L. Jones 7977</p>
	<p>BASIN SURVEYS</p>

2nd page -C-101

2/19/08

COTTON DRAW UNIT 113

1980' FNL & 660' FWL

5 1/2" Production

Lead w/ 320 sacks (35:65) Poz (Fly Ash):Premium Plus C Cement + 3% bwow Sodium Chloride + 0.25% bwoc R-3 + 0.125 lbs/sack Cello Flake + 3 lbs/sack LCM-1 + 0.3% bwoc FL-52A + 6% bwoc Bentonite + 102.5% Fresh Water

Tail w/785 sacks (60:40) Poz (Fly Ash):Premium Plus C Cement + 1% bwow Sodium Chloride + 0.5% bwoc BA-10A + 0.1% bwoc R-3 + 0.125 lbs/sack Cello Flake + 2 lbs/sack Kol Seal + 4% bwoc MPA-1 + 61.4% Fresh Water

Proposed Mud Circulation System:

Depth	Mud Wt	Visc	Fluid Loss	Type system
0'-850'	8.8	34-36	NC	Fresh Water
850'-4400	10.0	28	NC	Brine Water
4400'- TD	8.8	32-36	10-20	Fresh Water

The BOP will consist of a 3M system double ram type 3000 psi WP preventor w/ bag type Hydril preventor 3000 psi.

All BOP's and associated equipment will be tested to 1200 psi w/ rig pump before drilling out the 8 5/8" casing shoe (70% of 48#, H-40 casing). The estimated BHP is 2900 psi and the estimated BHT is 130.

There is no known presence of H2S in this area. All personnel will be familiar with all aspects of safe operation of equipment being used to drill this well.

See attached Gas Analysis.

See attached C-102



Laboratory Services, Inc.

2609 West Marland
Hobbs, New Mexico 88240

Telephone: (505) 397-3713

FOR: Devon Energy
P.O. Box 250
Artesia, New Mexico 88211-0250

SAMPLE: Sta. # 39033075
IDENTIFICATION Cotton Draw #90
COMPANY: Devon Energy
LEASE:
PLANT:

SAMPLE DATA: DATE SAMPLED 11/26/07
ANALYSIS DATE: 11/27/07
PRESSURE - PSIA 54
SAMPLE TEMP. °F 61
ATMOS. TEMP. °F

GAS (XX) LIQUID ()
SAMPLED BY: Lemmons
ANALYSIS BY: Vicki McDaniel

REMARKS: H2S = 0

COMPONENT ANALYSIS

COMPONENT	MOL PERCENT	GPM
Hydrogen Sulfide (H2S)	0.000	
Nitrogen (N2)	2.979	
Carbon Dioxide (CO2)	0.089	
Methane (C1)	69.307	
Ethane (C2)	12.841	3.426
Propane (C3)	8.616	2.369
I-Butane (IC4)	1.070	0.349
N-Butane (NC4)	2.606	0.820
I-Pentane (IC5)	0.684	0.250
N-Pentane (NC5)	0.735	0.266
Hexane Plus (C6+)	<u>1.073</u>	<u>0.466</u>
	100.000	7.946

BTU/CU.FT. - DRY 1372
AT 14.650 DRY 1367
AT 14.650 WET 1344
AT 14.73 DRY 1375
AT 14.73 WET 1351

MOLECULAR WT. 23.8041

SPECIFIC GRAVITY -
CALCULATED 0.820
MEASURED

**SECTION 36, TOWNSHIP 24 SOUTH, RANGE 31 EAST, N.M.P.M.,
EDDY COUNTY, NEW MEXICO.**

COTTON DRAW #90

LEASE ROAD

PROPOSED LEASE ROAD 1004.0'

150' NORTH
OFF SET
3495.4'

DEVON ENERGY PRODUCTION CO., L.P.
COTTON DRAW UNIT #113
Elev. - 3493'

150' WEST
OFF SET
3495.4'

Lat.-N 32°10'32.33"
Long.-W 103°44'16.53"
(NAD-83)

150' EAST
OFF SET
3492.7'

150' SOUTH
OFF SET
3494.4'

Directions to Location:

FROM MILE MARKER 19 OF STATE HWY 128, GO
EAST 0.3 MILES TO CO. RD. 786, ON CO. RD. 786
GO SOUTH FOR 4.6 MILES TO CO. RD. 791, ON CO.
RD. 791 GO SOUTH BY SOUTHEAST FOR 3.1 MILES
TO LEASE ROAD, ON LEASE ROAD GO EAST 1.9
MILES TO COTTON DRAW WELL IN SECTION 11,
THENCE NORTH 0.7 MILES, THENCE WEST 0.3 MILES,
THENCE NORTH 0.3 MILES, THENCE EAST 0.7 MILES,
THENCE 0.8 MILES NORTH THENCE WEST TO
PROPOSED LOCATION.

BASIN SURVEYS P.O. BOX 1786-HOBBS, NEW MEXICO

W.O. Number: 19062

Drawn By: **J. M. SMALL**

Date: 02-12-2008

Disk: 19062W JMS

200 0 200 400 FEET
SCALE: 1" = 200'

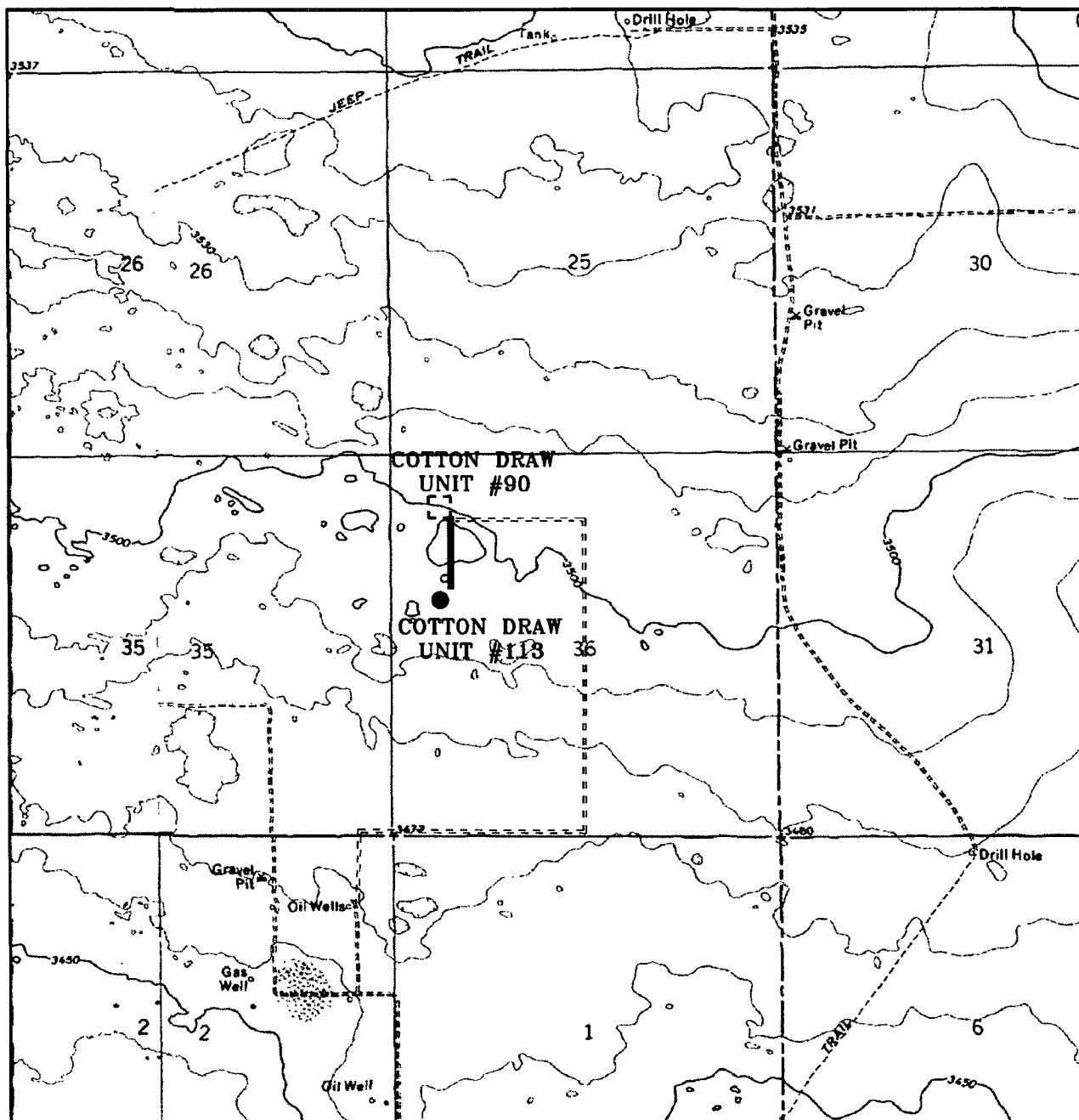
DEVON ENERGY PROD. CO., L.P.

REF: COTTON DRAW UNIT #113 / WELL PAD TOPO

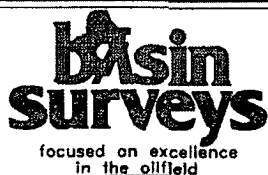
THE COTTON DRAW UNIT #113 LOCATED 1980' FROM THE
NORTH LINE AND 660' FROM THE WEST LINE OF
SECTION 36, TOWNSHIP 24 SOUTH, RANGE 31 EAST,
N.M.P.M., EDDY COUNTY, NEW MEXICO.

Survey Date: 02-07-2008

Sheet 1 of 1 Sheets



COTTON DRAW UNIT #113
 Located at 1980' FNL AND 660' FWL
 Section 36, Township 24 South, Range 31 East,
 N.M.P.M., Eddy County, New Mexico.



P.O. Box 1786
 1120 N. West County Rd.
 Hobbs, New Mexico 88241
 (505) 393-7316 - Office
 (505) 392-3074 - Fax
basinsurveys.com

W.O. Number: JMS 19062T

Survey Date: 02-07-2008

Scale: 1" = 2000'

Date: 02-12-2008

**DEVON ENERGY
 PROD. CO., L.P.**

