

District II
1301 W. Grand Ave., Artesia, NM 88210
Phone: (505) 748-1283 Fax: (505) 748-9720

State of New Mexico
Energy, Minerals and Natural Resources

Form C-101
Permit 71674



Oil Conservation Division

1220 S. St Francis Dr.
Santa Fe, NM 87505

MAR 19 2008
OCD-ARTESIA

APPLICATION FOR PERMIT TO DRILL, RE-ENTER, DEEPEN, PLUGBACK, OR ADD A ZONE

1. Operator Name and Address YATES PETROLEUM CORPORATION 105 S 4TH ST ARTESIA, NM 88210		2. OGRID Number 25575
		3. API Number 30-015-36230
4. Property Code 27980	5. Property Name RIO PENASCO JX	6. Well No. 003

7. Surface Location

UL - Lot	Section	Township	Range	Lot Idn	Feet From	N/S Line	Feet From	E/W Line	County
H	35	18S	25E	H	1500	N	1200	E	EDDY

8. Pool Information

Chester	0
---------	---

Additional Well Information

9. Work Type New Well	10. Well Type GAS	11. Cable/Rotary	12. Lease Type Private	13. Ground Level Elevation 3488
14. Multiple N	15. Proposed Depth 8860	16. Formation Chester	17. Contractor	18. Spud Date
Depth to Ground water 270		Distance from nearest fresh water well > 1000		Distance to nearest surface water > 1000
Pit: Liner: Synthetic <input checked="" type="checkbox"/> 12 _____ mils thick Clay <input type="checkbox"/> Pit Volume: 24000 bbls Drilling Method: Closed Loop System <input type="checkbox"/> Fresh Water <input checked="" type="checkbox"/> Brine <input type="checkbox"/> Diesel/Oil-based <input type="checkbox"/> Gas/Air <input type="checkbox"/>				

19. Proposed Casing and Cement Program

Type	Hole Size	Casing Type	Casing Weight/ft	Setting Depth	Sacks of Cement	Estimated TOC
Surf	17.5	13.375	48	400	450	0
Int1	12.25	8.625	24	1200	600	0
Prod	7.875	5.5	17	8860	650	5000

Casing/Cement Program: Additional Comments

Yates Petroleum Corporation proposes to drill and test the Chester and intermediate formations. Approximately 400' of surface casing will be set and cement circulated to shut off gravel and cavings. If commercial, production casing will be run and cemented. will perforate and stimulate as needed for production.

Proposed Blowout Prevention Program

Type	Working Pressure	Test Pressure	Manufacturer
DoubleRam	3000	3000	

I hereby certify that the information given above is true and complete to the best of my knowledge and belief. I further certify that the drilling pit will be constructed according to NMOCD guidelines <input type="checkbox"/> a general permit <input checked="" type="checkbox"/> or an (attached) alternative OCD-approved plan <input type="checkbox"/>		OIL CONSERVATION DIVISION Approved By: _____ District II Supervisor Approved Date: 3/26/10 Expiration Date: 3/26/10	
Printed Name: Cy Cowan Title: Regulatory Agent Email Address: Date: 3/19/08 Phone: (575) 748-4372			

Permit Comments

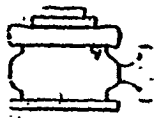
Operator: YATES PETROLEUM CORPORATION , 25575

Well: RIO PENASCO JX #003

API:

Created By	Comment	Comment Date
MSANDERS	MUD PROGRAM: 0-400' FW/Spud Mud; 400'-1200' FW; 1200'-7900' Cut Brine; 7900'-8860' Salt Gel/Starch.	3/19/2008
MSANDERS	BOPE PROGRAM: A 3000# BOPE will be installed on the 11 3/4" casing and tested daily.	3/19/2008

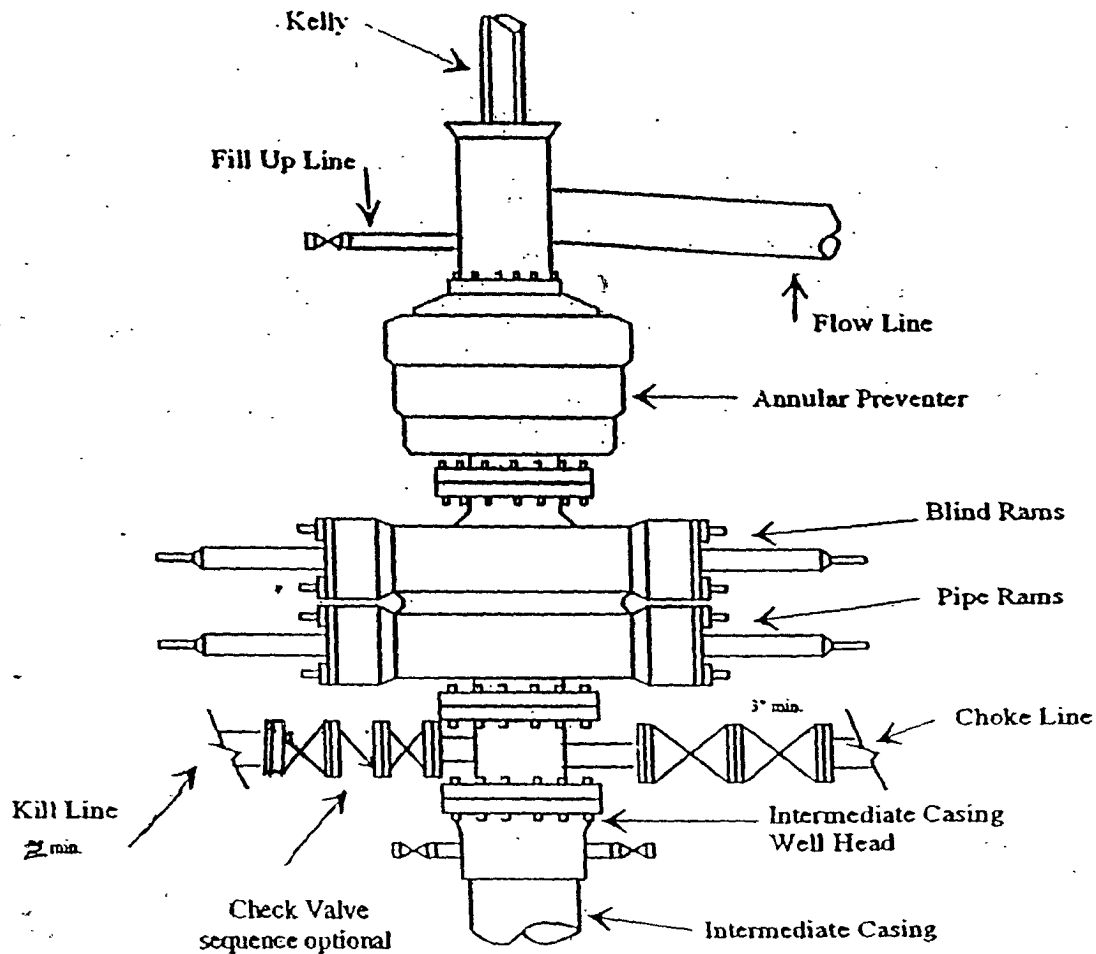
GENERAL SURVEYING COMPANY



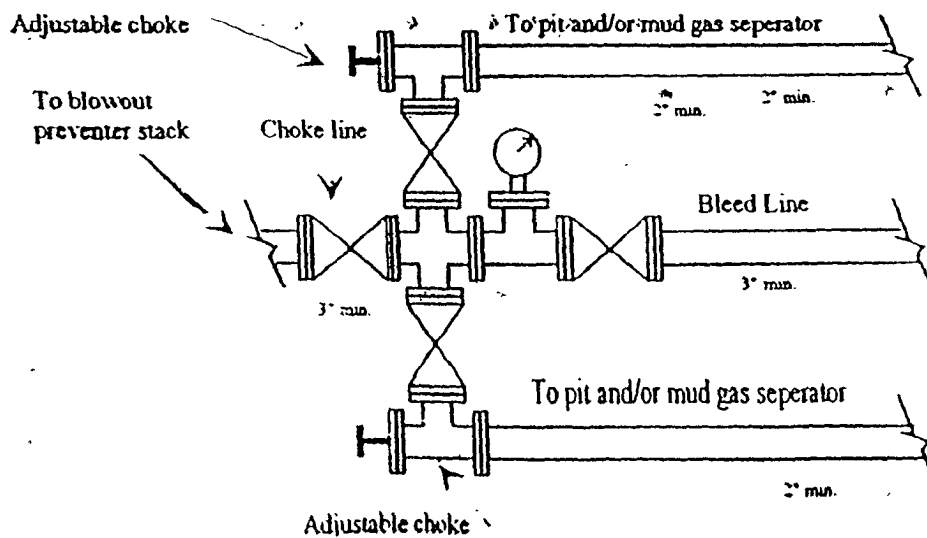
Yates Petroleum Corporation

BOP-3

Typical 3,000 psi Pressure System Schematic Annular with Double Ram Preventer Stack



Typical 3,000 psi choke manifold assembly with at least these minimum features



Yates Petroleum Corporation

**105 S. Fourth Street
Artesia, NM 88210**

Hydrogen Sulfide (H₂S) Contingency Plan

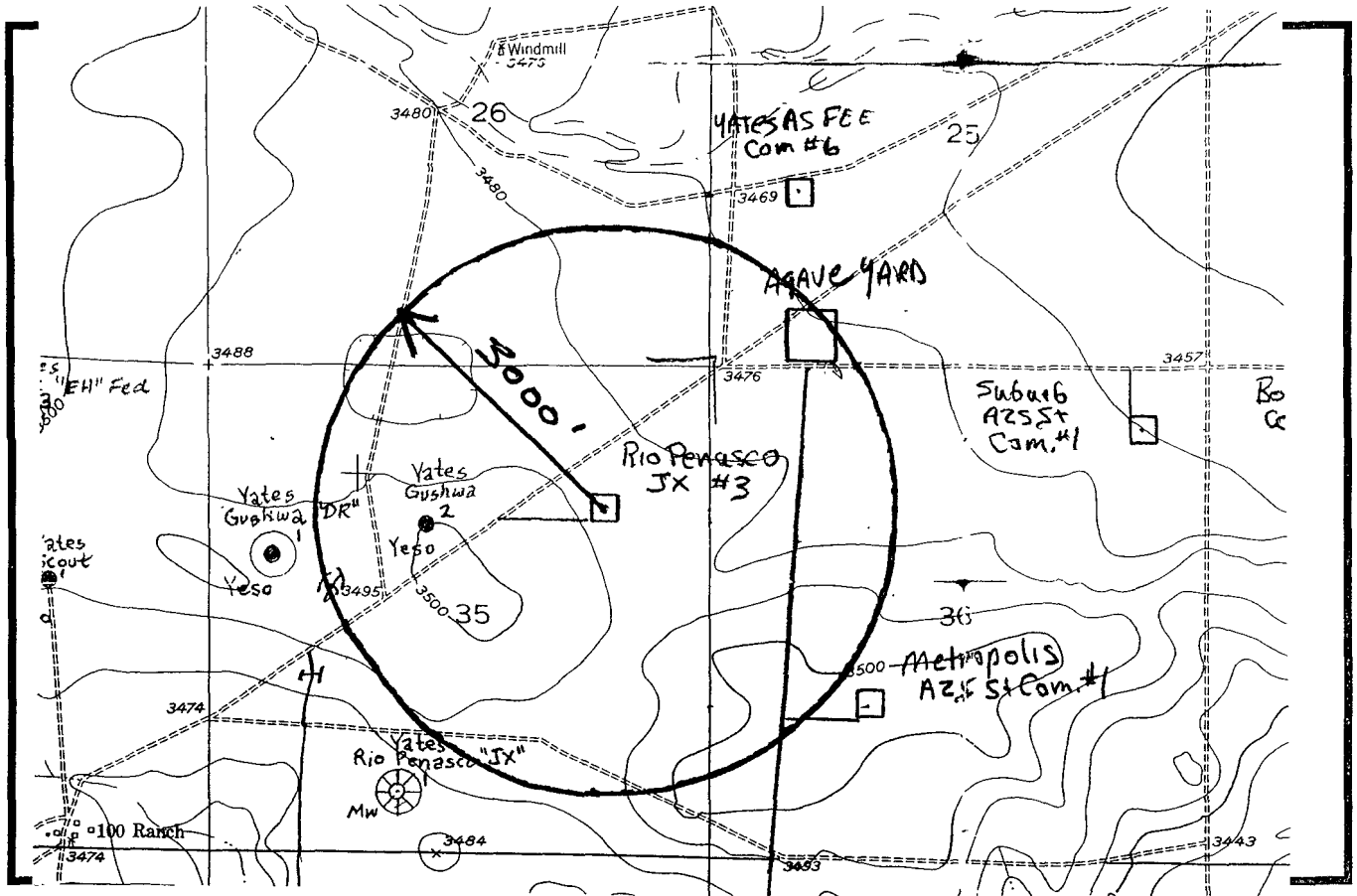
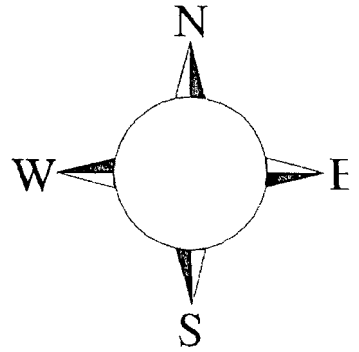
For

Rio Penasco JX #3

**1500' FNL, 1200' FEL
Section-35, T-18S, R-25E
Eddy County NM**

Rio Penasco JX #3 Location

This is an open drilling site. H₂S monitoring equipment and emergency response equipment will be used within 500' of zones known to contain H₂S, including warning signs, wind indicators and H₂S monitor.



Assumed 100 ppm ROE = 1000

100 ppm H₂S concentration shall trigger activation of this plan

Emergency Procedures

In the case of a release of gas containing H_2S , the first responder(s) must isolate the area and prevent entry by other persons into the 100 ppm ROE. Additionally the first responder(s) must evacuate any public places encompassed by the 100 ppm ROE. First responder(s) must take care not to injure themselves during this operation. Company and/or local officials must be contacted to aid in this operation. Evacuation of the public should be beyond the 100 ppm ROE.

All responders must have training in the detection of H_2S , measures for protection against the gas, equipment used for protection and emergency response. Additionally, responders must be equipped with H_2S monitors and air packs in order to control the release. Use the "buddy system" to ensure no injuries during the response.

Ignition of Gas Source

Should control of the well be considered lost and ignition considered, take care to protect against exposure to Sulfur Dioxide (SO_2). Intentional ignition must be coordinated with the NMOCD and local officials. Additionally the NM State Police may become involved. NM State Police shall be the Incident Command on scene of any major release. Take care to protect downwind whenever there is an ignition of the gas

Characteristics of H_2S and SO_2

Common Name	Chemical Formula	Specific Gravity	Threshold Limit	Hazardous Limit	Lethal Concentration
Hydrogen Sulfide	H_2S	1.189 Air = 1	10 ppm	100 ppm/hr	600 ppm
Sulfur Dioxide	SO_2	2.21 Air = 1	2 ppm	N/A	1000 ppm

Contacting Authorities

YPC personnel must liaison with local and state agencies to ensure a proper response to a major release. Additionally, the OCD must be notified of the release as soon as possible but no later than 4 hours. Agencies will ask for information such as type and volume of release, wind direction, location of release, etc. Be prepared with all information available. The following call list of essential and potential responders has been prepared for use during a release. YPC Company response must be in coordination with the State of New Mexico's 'Hazardous Materials Emergency Response Plan' (HMER)

Yates Petroleum Corporation Phone Numbers

YPC Office	(505) 748-1471
Pinson McWhorter/Operations Manager	(505) 748-4189
Darrel Atkins/Production Manager	(505) 748-4204
Ron Beasley/Prod Superintendent	(505) 748-4210
Al Springer/Drilling	(505) 748-4225
Paul Hanes/Prod. Foreman/Roswell	(505) 624-2805
Jim Krogman/Drilling Superintendent	(505) 748-4215
Artesia Answering Service	(505) 748-4302
(During non-office hours)	

Agency Call List

Eddy County (505)

Artesia

State Police.....	746-2703
City Police.....	746-2703
Sheriff's Office	746-9888
Ambulance	911
Fire Department	746-2701
LEPC (Local Emergency Planning Committee)	746-2122
NMOCD	748-1283

Carlsbad

State Police.....	885-3137
City Police.....	885-2111
Sheriff's Office	887-7551
Ambulance	911
Fire Department	885-2111
LEPC (Local Emergency Planning Committee).....	887-3798
US Bureau of Land Management.....	887-6544

New Mexico Emergency Response Commission (Santa Fe)	(505)476-9600
24 HR	(505) 827-9126
National Emergency Response Center (Washington, DC)	...(800) 424-8802

Other

Boots & Coots IWC	1-800-256-9688 or (281) 931-8884
Cudd Pressure Control.....	(915) 699-0139 or (915) 563-3356
Halliburton	(505) 746-2757
B. J. Services.....	(505) 746-3569
Flight For Life -4000 24th St, Lubbock, TX	(806) 743-9911
Aerocare -Rr 3 Box 49f, Lubbock, TX	(806) 747-8923
Med Flight Air Amb 2301 Yale Blvd SE #D3, Albuq, NM	(505) 842-4433
S B Air Med Svc 2505 Clark Carr Loop SE, Albuq, NM	(505) 842-4949