

Submit 3 Copies To Appropriate District Office
District I
1625 N French Dr, Hobbs, NM 88240
District II
1301 W Grand Ave, Artesia, NM 88210
District III
1000 Rio Brazos Rd, Aztec, NM 87410
District IV
1220 S St Francis Dr, Santa Fe, NM 87505

State of New Mexico
Energy, Minerals and Natural Resources

Form C-103
May 27, 2004

OIL CONSERVATION DIVISION
1220 South St. Francis Dr.
Santa Fe, NM 87505

WELL API NO. 30-015-03544
5. Indicate Type of Lease STATE <input checked="" type="checkbox"/> FEE <input type="checkbox"/>
6. State Oil & Gas Lease No.
7. Lease Name or Unit Agreement Name STATE B7717 # 1
8. Well Number 3
9. OGRID Number 1903
10. Pool name N/A

SUNDRY NOTICES AND REPORTS ON WELLS
(DO NOT USE THIS FORM FOR PROPOSALS TO DRILL OR TO DEEPEN OR PLUG BACK TO A DIFFERENT RESERVOIR USE "APPLICATION FOR PERMIT" (FORM C-101) FOR SUCH PROPOSALS)

1. Type of Well: Oil Well ☒ Gas Well ☐ Other ☐ APR 18 2008
2. Name of Operator
BEACH EXPLORATION, INC. OCD-ARTESIA
3. Address of Operator
800 NORTH MARIENFELD, SUITE 200, MIDLAND, TX 79701

4. Well Location
Unit Letter I; 1980 feet from the SOUTH line and 660 feet from the EAST line
Section 2 Township 19S Range 29E NMPM EDDY County

11. Elevation (Show whether DR, RKB, RT, GR, etc.)

Pit or Below-grade Tank Application ☐ or Closure ☐

Pit type _____ Depth to Groundwater _____ Distance from nearest fresh water well _____ Distance from nearest surface water _____

Pit Liner Thickness: _____ mil Below-Grade Tank: Volume _____ bbls; Construction Material _____

12. Check Appropriate Box to Indicate Nature of Notice, Report or Other Data

NOTICE OF INTENTION TO:

PERFORM REMEDIAL WORK ☐ PLUG AND ABANDON ☐
TEMPORARILY ABANDON ☐ CHANGE PLANS ☐
PULL OR ALTER CASING ☐ MULTIPLE COMPL ☐

SUBSEQUENT REPORT OF:

REMEDIAL WORK ☐ ALTERING CASING ☐
COMMENCE DRILLING OPNS. ☐ P AND A ☐
CASING/CEMENT JOB ☐

OTHER: RE-PLUG FOR EASTLAND QUEEN UNIT WATER FLOOD ☒

OTHER ☐

13. Describe proposed or completed operations. (Clearly state all pertinent details, and give pertinent dates, including estimated date of starting any proposed work). SEE RULE 1103. For Multiple Completions: Attach wellbore diagram of proposed completion or recompletion.

Beach plans to move Triple N into the area in May 2008 to re-plug this and two other wells prior to initiation of a waterflood

Re-Plugging Procedure - PER OCD INSTRUCTIONS ORDER NO R-12833

- RU and remove dry hole marker Drill out 10sx surface plug inside 7" w/ 6 1/4" bit (est 0' - 40')
- Drill out 100sx cmt shoe plug inside 7" w/ 6 1/4" bit (est 275' - 425') Drill out 25sx cmt plug inside 7" w/ 6 1/4" bit (est 855' - 1000')
- Drill out 25sx cmt plug inside 7" w/ 6 1/4" bit (est 1500' - 1650') Drill out 25sx cmt plug inside 7" w/ 6 1/4" bit (est 2100' - 2250')
- Clean out hole to next plug (est top 2575') tag and record bottom plug Load and circulate hole w/ 9 ppg mud
- POOH w/tbg RIH w/wireline and perf at 2200' POOH w/wireline
- RIH w/tbg and pkr Set pkr at 1900' Sqz w/45sx POOH w/tbg WOC
- RIH w/wireline and tag plug at 2100' or less POOH RIH w/wireline and perf at 1680' POOH w/wireline
- RIH w/tbg and pkr Set pkr at 1380' Sqz w/45sx POOH w/tbg
- RIH w/wireline and perf at 1180' POOH w/wireline. RIH w/tbg and pkr. Set pkr at 880'. Sqz w/45sx POOH w/tbg. WOC
- RIH w/wireline and tag plug at 1080' or less. POOH
- RIH w/tbg to 425' and spot a 35sx plug inside the 7" POOH WOC
- RIH w/wireline and tag plug at 253' or less POOH Pull tbg to 60' and pump 10sx surface plug and install regulation dry hole marker

I hereby certify that the information above is true and complete to the best of my knowledge and belief. I further certify that any pit or below-grade tank has been/will be constructed or closed according to NMOCD guidelines ☐, a general permit ☐ or an (attached) alternative OCD-approved plan ☐.

SIGNATURE Jack M. Rose TITLE Engineer DATE April 11, 2008

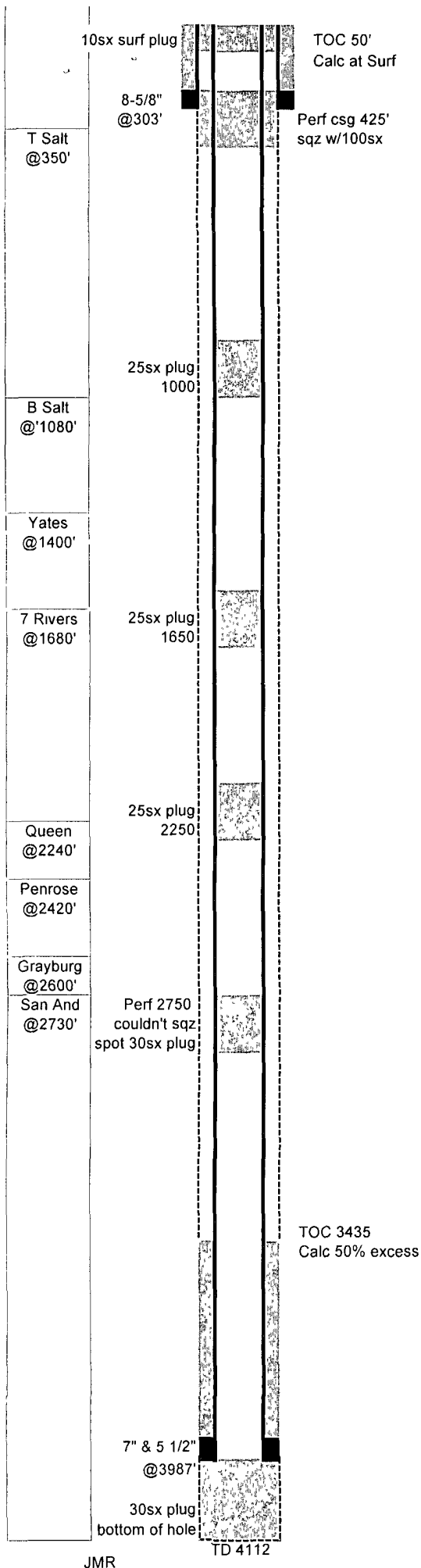
Type or print name Jack M. Rose E-mail address: bmartin@beachexp.com Telephone No. (432) 683-6226

For State Use Only

See attached
Conditions of Approval

APPROVED BY: Gerry Guye TITLE Compliance Officer DATE APR 21 2008

Conditions of Approval (if any):



JMR

State B7717 #1							
GL:	3,367					Status: P&A	
KB						Perfs:	
TD:	4,112					API: 30-015-03544	
PBD:						NM Lse: B-7717	
Fr Wtr:						Field:	
Legal:	1,980	from S					
	660	from E					
Section:	2-I					Logs: No logs	
Township:	19S					Archeological:	
Range:	29E						
County:	Eddy						

Casing	Wt	Type	Set	Cmt	Hole	TOC	Method
8-5/8"	24 00		303	50	10"	Prob 50'	Calc Surface
7" & 5- 1/2"	20 & 17	7" 20# to 2647	3,987	130	7-7/8"	3435'	Calc 50% ex
		7" 17# to 3147					
		5 1/2" 17# to 3987					

17-Feb-48 Spud well
Leonard Oil Company - State B7717 #1

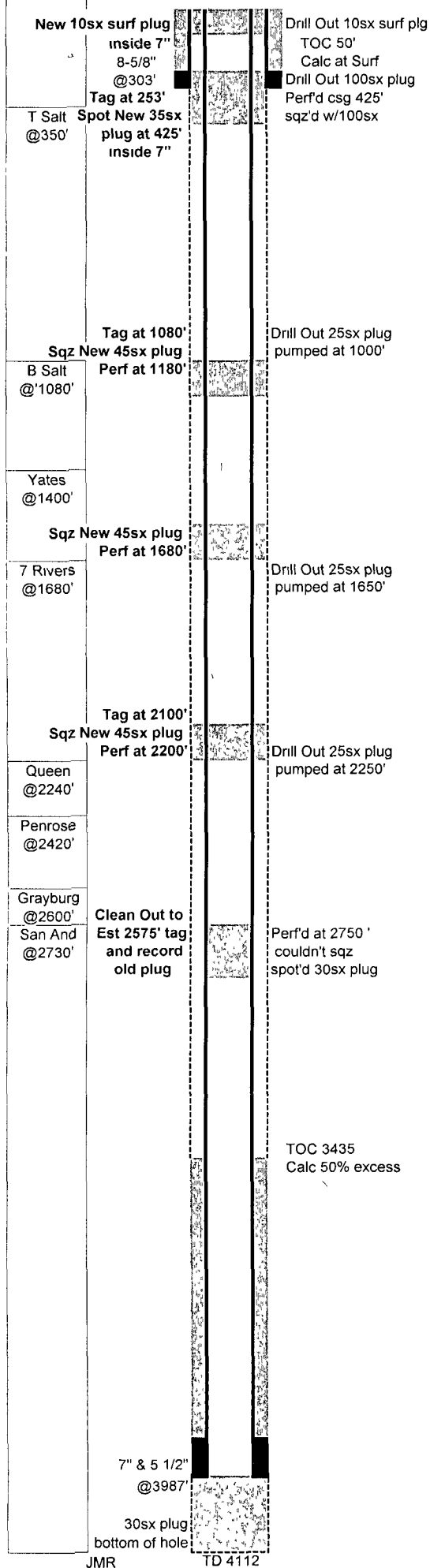
27-May-52 Completion
OH 3987 - 4112
Chem treat shot OH

26-May-53 P&A - Leonard Oil Co
30sx plug in bottom of hole
mudded to surface and put a marker at surface

3-Feb-96 P&A again NM State
P&A marker was leaking fluids
RIH to 2809 without tagging any plugs
Perf at 2750 to sqz couldn't sqz and spotted 30sx plug across perf
25sx plug at 2250
25sx plug at 1650
25sx plug 1000
Perf csg at 425' and sqz w/100sx
set 10sx surface plug and set marker

BEFORE

7/5/2007



State B7717 #1									
GL:	3,367	Status: P&A							
KB:		Perfs:							
TD:	4,112	API: 30-015-03544							
PBD:		NM Lse. B-7717							
Fr Wtr:		Field:							
Legal:	1,980 from S 660 from E	Logs: No logs							
Section:	2-I	Archeological:							
Township:	19S								
Range:	29E								
County:	Eddy								
Casing	Wt	Type	Set	Cmt	Hole	TOC	Method		
8-5/8"	24 00		303	50	10"	Prob 50'	Calc Surface		
7" & 5- 1/2"	20 & 17	7" 20# to 2647 7" 17# to 3147 5 1/2" 17# to 3987	3,987	130	7-7/8"	3435'	Calc 50% ex		
<p>17-Feb-48 Spud well Leonard Oil Company - State B7717 #1</p> <p>27-May-52 <u>Completion</u> OH 3987 - 4112 Chem treat shot OH</p> <p>26-May-53 <u>P&A - Leonard Oil Co</u> 30sx plug in bottom of hole mudded to surface and put a marker at surface</p> <p>3-Feb-96 <u>P&A again NM State</u> P&A marker was leaking fluids RIH to 2809 without tagging any plugs Perf at 2750 to sqz couldn't sqz and spotted 30sx plug across perf 25sx plug at 2250 25sx plug at 1650 25sx plug 1000 Perf csg at 425' and sqz w/100sx set 10sx surface plug and set marker</p>									
<div style="border: 1px solid black; padding: 5px; display: inline-block;">AFTER</div>									
<ol style="list-style-type: none"> RU and remove dry hole marker Drill out 10sx surface plug inside 7" w/ 6 1/4" bit (est 0' - 40') Drill out 100sx cmt shoe plug inside 7" w/ 6 1/4" bit (est 275'?? - 425') Drill out 25sx cmt plug inside 7" w/ 6 1/4" bit (est 855' - 1000') Drill out 25sx cmt plug inside 7" w/ 6 1/4" bit (est 1500' - 1650') Drill out 25sx cmt plug inside 7" w/ 6 1/4" bit (est 2100' - 2250') Clean out hole to next plug (est top 2575') tag and record bottom plug Load and circulate hole w/ 9 ppg mud POOH w/tbg RIH w/wireline and perf at 2200'. POOH w/wireline RIH w/tbg and pkr. Set pkr at 1900'. Sqz w/45sx POOH w/tbg WOC. RIH w/wireline and tag plug at 2100' or less. POOH RIH w/wireline and perf at 1680'. POOH w/wireline RIH w/tbg and pkr Set pkr at 1380'. Sqz w/45sx POOH w/tbg RIH w/wireline and perf at 1180' POOH w/wireline RIH w/tbg and pkr. Set pkr at 880'. Sqz w/45sx POOH w/tbg WOC. RIH w/wireline and tag plug at 1080' or less POOH. RIH w/tbg to 425' and spot a 35sx plug inside the 7". POOH. WOC RIH w/wireline and tag plug at 253" or less. POOH Pull tbg to 60' and pump 10sx surface plug and install regulation dry hole marker 									

Conditions of Approval

- All plugs must leave at a minimum 100' of cement inside of casing.
- All plugs with the exception of the surface plug must be tagged and recorded.