

## District I

1625 N French Dr., Hobbs, NM 88240

## District II

1301 W Grand Avenue, Artesia, NM 88210

## District III

1000 Rio Brazos Road, Aztec, NM 87410

## District IV

1220 S St Francis Dr, Santa Fe, NM 87505

State of New Mexico  
Energy Minerals and Natural Resources

Form C-101

May 27, 2004

Oil Conservation Division  
1220 South St. Francis Dr.  
Santa Fe, NM 87505

Submit to appropriate District Office

☐ AMENDED REPORT

JUL - 1 2008

APPLICATION FOR PERMIT TO DRILL, RE-ENTER, DEEPEN, **OCD-ARTESIA**  
PLUGBACK, OR ADD A ZONE

<sup>1</sup> Operator Name and Address Beach Exploration, Inc. 800 North Marienfeld, Suite 200, Midland, Texas 79701		<sup>2</sup> OGRID Number 1903
		<sup>3</sup> API Number 30 - 015-03541
<sup>3</sup> Property Code 036974	<sup>5</sup> Property Name Eastland Queen Unit	<sup>6</sup> Well No. 18
<sup>9</sup> Proposed Pool 1 Turkey Track; (7 RVRS-QU-GB-SA)		<sup>10</sup> Proposed Pool 2

<sup>7</sup> Surface Location

L or lot no J	Section 1	Township 19S	Range 29E	Lot Idn	Feet from the 1632	North/South line South	Feet from the 1667	East/West line East	County Eddy
------------------	--------------	-----------------	--------------	---------	-----------------------	---------------------------	-----------------------	------------------------	----------------

<sup>8</sup> Proposed Bottom Hole Location If Different From Surface

UL or lot no	Section	Township	Range	Lot Idn	Feet from the	North/South line	Feet from the	East/West line	County
--------------	---------	----------	-------	---------	---------------	------------------	---------------	----------------	--------

## Additional Well Information

<sup>11</sup> Work Type Code E	<sup>12</sup> Well Type Code I	<sup>13</sup> Cable/Rotary R	<sup>14</sup> Lease Type Code S	<sup>15</sup> Ground Level Elevation 3403'
<sup>16</sup> Multiple NO	<sup>17</sup> Proposed Depth 2540	<sup>18</sup> Formation QUEEN	<sup>19</sup> Contractor TRIPLE N	<sup>20</sup> Spud Date MAY 2008
Depth to Groundwater 195'		Distance from nearest fresh water well 2 mi		Distance from nearest surface water 16 mi
Pit <input type="checkbox"/> Liner Synthetic <input type="checkbox"/> Clay <input type="checkbox"/> Pit Volume: _____ bbls Closed-Loop System <input checked="" type="checkbox"/> Drilling Method Reverse Unit Fresh Water <input type="checkbox"/> Brine <input checked="" type="checkbox"/> Diesel/Oil-based <input type="checkbox"/> Gas/Air <input type="checkbox"/>				

<sup>21</sup> Proposed Casing and Cement Program

Hole Size	Casing Size	Casing weight/foot	Setting Depth	Sacks of Cement	Estimated TOC
7 7/8"	4 1/2"	10.5	2540	1150	surface

<sup>22</sup> Describe the proposed program. If this application is to DEEPEN or PLUG BACK, give the data on the present productive zone and proposed new productive zone. Describe the blowout prevention program, if any. Use additional sheets if necessary.

- 1) RU Remove dry hole marker. Weld on 8 5/8" Fig 92 Larkin Csg head. NU manual 3,000 psi BOP.
- 2) Drill out surface plug w/ 7 7/8" bit (plug size unknown). Drill out 8 5/8" 25sx cmt shoe plug w/ 7 7/8" bit (est 294' - 366').
- 3) Cleanout hole w/ 7 7/8" bit down to open hole cmt plug est at 2541'
- 4) Circulate and condition hole and run OH Neutron Density Log. Run 4 1/2" 10.5# J55 LTC csg to 2540'
- 5) Cement 4 1/2" csg to surface w/ 950 sx lite (12.8 ppg) w/ 3% salt, 5# / sx gilsonite, 1/4 #/sx flocele. tail in w/ 200 sx (14.8 ppg) w/ 2% salt and 1/4 #/sx flocele
- 6) Install Model R 4 1/2 x 2 3/8 tbg head. Perforate Queen unitized interval at approximately 2450'.
- 7) Break perforations down w/ acid and fracture treat Queen w/ 25Mgal and 40 M# of sand. Swab and clean well up after frac
- 8) Run FG lined tbg and Model AD-1 tension pkr (lined & coated) within 50' of perfs.
- 9) Flush backside, set packer, load backside w/ packer fluid and integrity test.

<sup>23</sup> I hereby certify that the information given above is true and complete to the best of my knowledge and belief. I further certify that the drilling pit will be constructed according to NMOC guidelines ☐, a general permit ☐, or an (attached) alternative OCD-approved plan ☒.

Signature:

Printed name: Jack M. Rose

Title Engineer

E-mail Address bmartin@beachexp.com

Date June 30, 2008

Phone (432) 683-6226

## OIL CONSERVATION DIVISION

Approved by

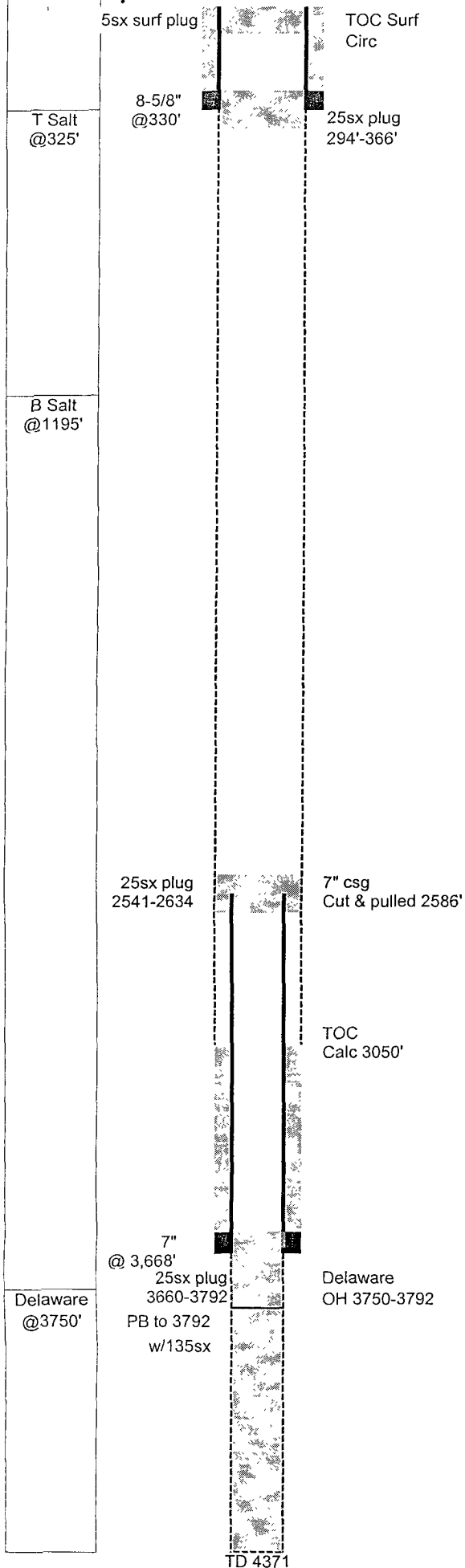
*Jim W. Green*  
*District II Supervisor*

Title.

Approval Date 7/3/08

Expiration Date 7/3/10

**NOTE: NEW PIT RULE**  
19-15-17 NMAC PART 17  
A form C-144 must be approved  
before starting drilling operations.



## Eastland Queen Unit #18

GL: KB: 3,403 TD: 4,371 PBD: 3,792 Fr. Wtr: Legal: 1,650 from S 1,650 from E

Status: P&A Perfs: OH Delaware 3750 - 3792 API: 30-015-03541 NM Lse: Field: East Turkey Track Logs: Cable tool no logs Archeological:

Casing	Wt	Type	Set	Cmt	Hole	TOC	Method
8-5/8"	28.00	H-40	330	80	10"	Surf	Circulated
7"	20.00		3,668	50 OH	8" 6-1/4"	3050'	Calc 1/3 excess

28-Jan-52 Spud well  
Leonard Oil Company - State B-7717 #4  
31-Mar-52 Set 7" csg at 3668  
18-Apr-52 TD 4371 making 45 gal wtr and 2 gal oil per hour, PB to 3792' w/135 sx cmt

### Delaware - Completion

22-Apr-52 Sand frac 1500 gal Hydrafrac under Lynes pkr from 3700' - 3792', 7 gal wtr and 33 gal oil per hr, tested 19 BOPD 4 BWPD  
7-May-53 TA'd well. Pumped 25sx cmt at 3792' filled hole w/mud to surf, placed a 7" swedge on csg and installed a marker (est cmt to csg at 3668')  
10-Dec-59 P&A well. Shot 7" off and recovered 2586' 7" csg. Ran tbg, mudded up hole, placed 25sx cmt plug 2541-2634 and 25sx plug from 294-366', set regulation 4" marker and poored 5sx cmt around marker

### Re-Entry Procedure

1. RU and remove dry hole marker
2. Drill out surface plug w/7 7/8" bit (plug size unknown)
3. Drill out 8 5/8" 25sx cmt shoe plug w/7 7/8" bit (est 294' - 366')
4. Clean out hole w/7 7/8" bit down to open hole cmt plug estimated at 2541'
5. Circulate and condition hole and run OH Neutron-Density log
6. Run 4 1/2" 10.5# J55 csg to 2540'
7. Cement 4 1/2" csg w/950sx lite (12.8 ppg) w/3% salt, 5#/sx gilsonite, 1/4#/sx flocele Tail in w/200sx (14.8 ppg) w/2% salt, 1/4#/sx flocele

DISTRICT I  
1625 N. French Dr., Hobbs, NM 88240

DISTRICT II  
1301 W. Grand Avenue, Artesia, NM 88210

DISTRICT III  
1000 Rio Brazos Rd., Aztec, NM 87410

DISTRICT IV  
1220 S. St. Francis Dr., Santa Fe, NM 87505

State of New Mexico

Energy, Minerals, and Natural Resources Department

OIL CONSERVATION DIVISION

1220 South St. Francis Dr.

Santa Fe, New Mexico 87505

Form C-102

Revised October 12, 2005

Submit to Appropriate District Office

State Lease - 4 copies

Fee Lease - 3 copies

☐ AMENDED REPORT

WELL LOCATION AND ACREAGE DEDICATION PLAT

<sup>1</sup> API Number 30-015-03541	<sup>2</sup> Pool Code 61020	<sup>3</sup> Pool Name TURKEY TRACK: (7 RVRS-QU-GB-SA)
<sup>4</sup> Property Code 036974	<sup>5</sup> Property Name EASTLAND QUEEN UNIT (RE-ENTRY)	<sup>6</sup> Well Number 18
<sup>7</sup> OGRID No. 1903	<sup>8</sup> Operator Name BEACH EXPLORATION	<sup>9</sup> Elevation 3403'

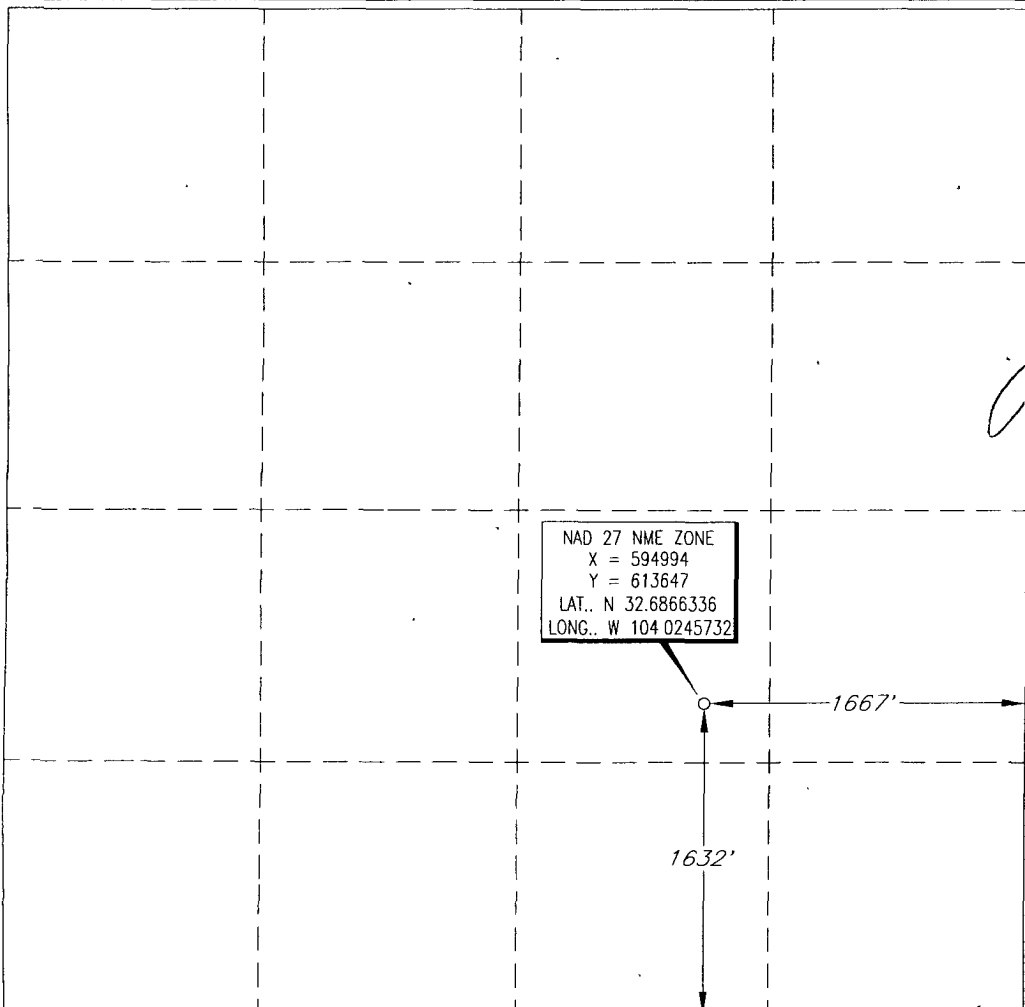
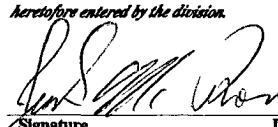
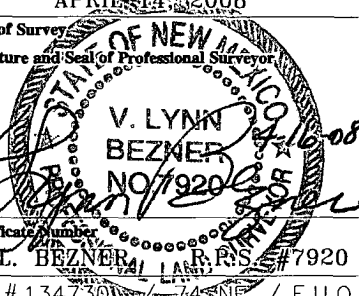
<sup>10</sup> Surface Location

UL or lot no.	Section	Township	Range	Lot Idn	Feet from the	North/South line	Feet from the	East/West line	County
J	1	19 SOUTH	29 EAST, N.M.P.M.		1632'	SOUTH	1667'	EAST	EDDY

<sup>11</sup> Bottom Hole Location If Different From Surface

UL or lot no.	Section	Township	Range	Lot Idn	Feet from the	North/South line	Feet from the	East/West line	County
<sup>12</sup> Dedicated Acres	<sup>13</sup> Joint or Infill	<sup>14</sup> Consolidation Code	<sup>15</sup> Order No.						

NO ALLOWABLE WELL BE ASSIGNED TO THIS COMPLETION UNTIL ALL INTERESTS HAVE BEEN CONSOLIDATED OR A NON-STANDARD UNIT HAS BEEN APPROVED BY THE DIVISION

	<p><b>OPERATOR CERTIFICATION</b></p> <p><i>I hereby certify that the information contained herein is true and complete to the best of my knowledge and belief, and that this organization either owns a working interest or unleased mineral interest in the land including the proposed bottom hole location or has a right to drill this well at this location pursuant to a contract with an owner of such a mineral or working interest, or to a voluntary pooling agreement or a compulsory pooling order heretofore entered by the division.</i></p> <p> 4/15/08</p> <p>Signature _____ Date _____</p> <p>Jack M. Rose, Engineer</p> <p>Printed Name _____</p> <p><b>SURVEYOR CERTIFICATION</b></p> <p><i>I hereby certify that the well location shown on this plat was plotted from field notes of actual surveys made by me or under my supervision, and that the same is true and correct to the best of my belief.</i></p> <p>APRIL 14 2008</p> <p>Date of Survey _____</p> <p>Signature and Seal of Professional Surveyor _____</p> <p></p> <p>Certificate Number _____</p> <p>V. L. BEZNER, R.S. #7920</p> <p>JOB # 134730 / 74 SNE / E.U.O.</p>
---	---

[illegible]

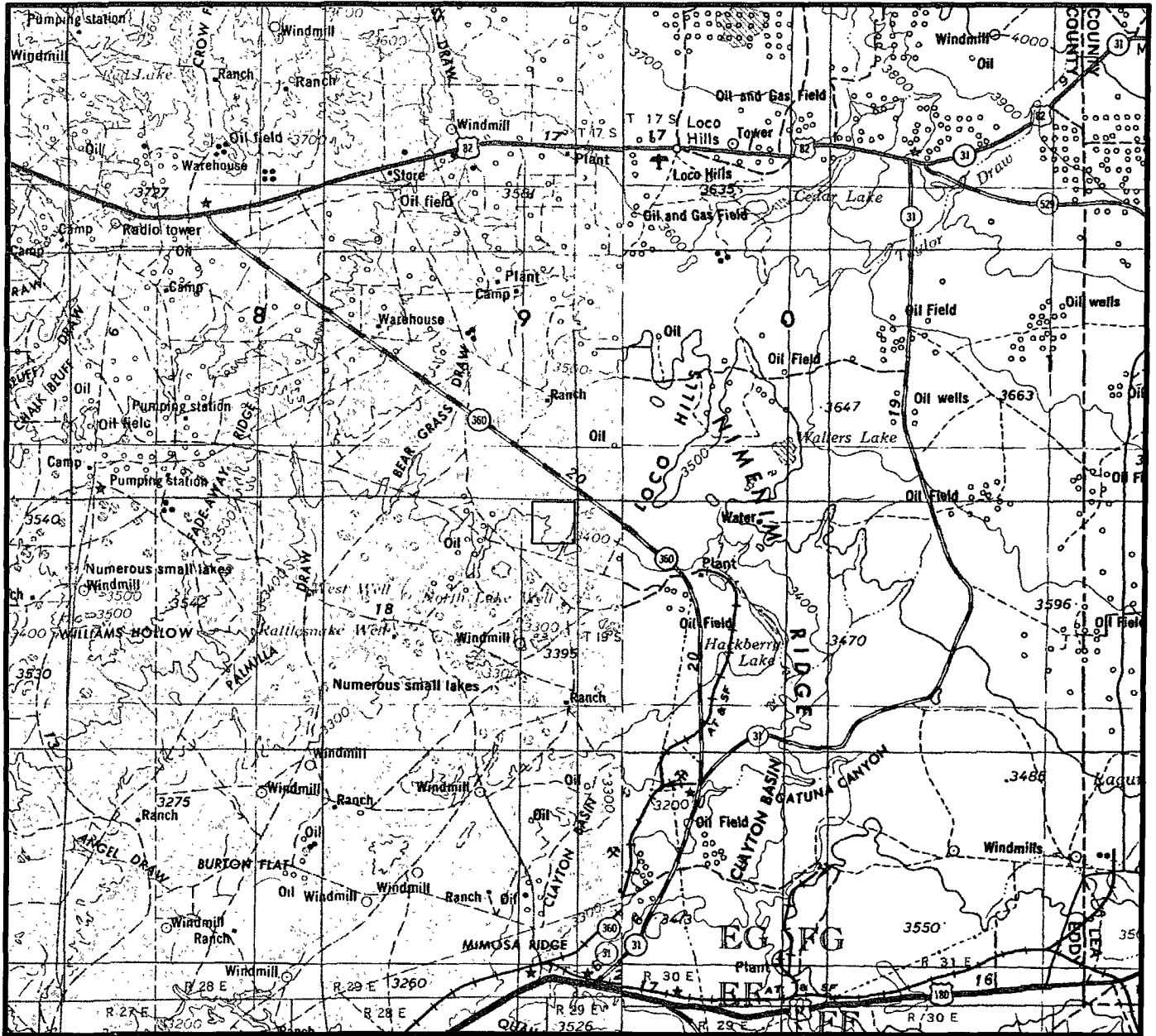
CONTOUR INTERVAL 10'

LONG.                      LONG.: W 104.0245732



2903 N. BIG SPRING  
MIDLAND, TX. 79705  
(800) 767-1653

# VICINITY MAP



SECTION 1 TWP 19-S RGE 29-E  
 SURVEY NEW MEXICO PRINCIPAL MERIDIAN  
 COUNTY EDDY STATE NM  
 DESCRIPTION 1625' FSL & 1667' FEL

OPERATOR BEACH EXPLORATION  
 LEASE EASTLAND QUEEN UNIT #18 (RE-ENTRY)

DISTANCE & DIRECTION FROM THE JCT OF HWY. 180 & HWY.  
360, GO NORTH 10.8 MILES ON HWY. 360, THENCE SOUTHWEST  
0.8 MILES ON LEASE ROAD, THENCE WEST 0.1 MILES TO A  
A POINT ±80' SOUTH OF THE LOCATION.



## TOPOGRAPHIC LAND SURVEYORS

*Surveying & Mapping for the Oil & Gas Industry*

This location has been very carefully staked on the ground according to the best official survey records, maps, and other data available to us.

Review this plot and notify us immediately of any possible discrepancy.

1307 N. HOBART  
 PAMPA, TX. 79065  
 (800) 658-6382

6709 N. CLASSEN BLVD.  
 OKLAHOMA CITY, OK. 73116  
 (800) 654-3219

2903 N. BIG SPRING  
 MIDLAND, TX. 79705  
 (800) 767-1653