

Submit 3 Copies To Appropriate District
Office
District I
1625 N. French Dr., Hobbs, NM 87240
District II
1301 W. Grand Ave., Artesia, NM 88210
District III
1000 Rio Brazos Rd., Aztec, NM 87410
District IV
1220 S. St. Francis Dr., Santa Fe, NM 87505

State of New Mexico
Energy, Minerals and Natural Resources

OIL CONSERVATION DIVISION
1220 South St. Francis Dr.
Santa Fe, NM 87505

SEP 23 2008

OCD-ARTESIA

Form C-103
May 27, 2004

SUNDRY NOTICES AND REPORTS ON WELLS (DO NOT USE THIS FORM FOR PROPOSALS TO DRILL OR TO DEEPEN OR PLUG BACK TO A DIFFERENT RESERVOIR. USE "APPLICATION FOR PERMIT" (FORM C-101) FOR SUCH PROPOSALS.)		WELL API NO. 30-005-63970
1. Type of Well: Oil Well <input type="checkbox"/> Gas Well <input checked="" type="checkbox"/> Other		5. Indicate Type of Lease STATE <input checked="" type="checkbox"/> FEE <input type="checkbox"/>
2. Name of Operator PARALLEL PETROLEUM CORPORATION		6. State Oil & Gas Lease No.
3. Address of Operator 1004 N BIG SPRING, SUITE 400, MIDLAND TX 79701		7. Lease Name or Unit Agreement Name: WINNING COLORS 1525-10 B
4. Well Location Unit Letter <u>E</u> : <u>1880</u> feet from the <u>NORTH</u> line and <u>220</u> feet from the <u>WEST</u> line Section <u>11</u> Township <u>15S</u> Range <u>25E</u> NMPM County <u>CHAVES</u>		8. Well Number 3
11. Elevation (Show whether DR, RKB, RT, GR, etc.) GR: 3480		9. OGRID Number 230387
Pit or Below-grade Tank Application <input type="checkbox"/> or Closure <input type="checkbox"/> Pit type _____ Depth to Groundwater _____ Distance from nearest fresh water well _____ Distance from nearest surface water _____ Pit Liner Thickness: _____ mil Below-Grade Tank: Volume _____ bbls; Construction Material _____		10. Pool name or Wildcat WALNUT CREEK WOLF CAMP GAS 97631

12. Check Appropriate Box to Indicate Nature of Notice, Report, or Other Data

NOTICE OF INTENTION TO:

PERFORM REMEDIAL WORK ☐ PLUG AND ABANDON ☐
TEMPORARILY ABANDON ☐ CHANGE PLANS ☒
PULL OR ALTER CASING ☐ MULTIPLE COMPLETION ☐
OTHER: CHANGE IN LOCATION: SL & BHL ☒

SUBSEQUENT REPORT OF:

REMEDIAL WORK ☐ ALTERING CASING ☐
COMMENCE DRILLING OPNS. ☐ PLUG AND ABANDONMENT ☐
CASING TEST AND CEMENT JOB ☐
OTHER: ☐

13. Describe proposed or completed operations. (Clearly state all pertinent details, and give pertinent dates, including estimated date of starting any proposed work). SEE RULE 1103. For Multiple Completions: Attach wellbore diagram of proposed completion or recompletion.

REQUEST APPROVAL OF CHANGE OF SURFACE LOCATION AND BOTTOM HOLE LOCATION

PRODUCING UNIT REMAINS THE SAME

OLD LOCATIONS: SL: H, SEC 10, 1880 FNL & 208 FWL
BHL: E, SEC 10, 1880 FNL & 660 FWL

NEW LOCATIONS: SL: E, SEC 11, 1880 FNL & 220 FWL

BHL: E, SEC 10, 1862 FNL & 660 FWL

NEW PLAT (C-102), LOCATION VERIFICATION MAP & VICINITY MAP ATTACHED

I hereby certify that the information above is true and complete to the best of my knowledge and belief. I further certify that any pit or below-grade tank has been/will be constructed or closed according to NM OCD guidelines ☐ , a general permit ☐ or an (attached) alternative OCD-approved plan ☐

SIGNATURE Kaye McCormick TITLE SR PROD & REG TECHNICIAN DATE 09-22-2008

Type or print name KAYE MC CORMICK

E-mail address:

kmccormick@plll.com

Telephone No. 432-685-6563

For State Use Only

APPROVED BY _____ TITLE MMOCD DATE _____

Conditions of Approval, if any:

Accepted for record
MMOCD

DISTRICT I
1625 N. French Dr., Hobbs, NM 88240

DISTRICT II
1301 W. Grand Avenue, Artesia, NM 88210

DISTRICT III
1000 Rio Brazos Rd., Aztec, NM 87410

DISTRICT IV
1220 S. St. Francis Dr., Santa Fe, NM 87505

State of New Mexico
Energy, Minerals & Natural Resources Department

OIL CONSERVATION DIVISION
1220 South St. Frances Dr.
Santa Fe, NM 87505

Form C-102
Revised October 12, 2005
Submit to Appropriate District Office
State Lease - 4 Copies
Fee Lease - 3 Copies

☐ AMENDED REPORT

WELL LOCATION AND ACREAGE DEDICATION PLAT

API Number <i>30-005-63970</i>	Pool Code <i>97631</i>	Pool Name <i>Walnut Creek; Wolfcamp G</i>
Property Code <i>36657</i>	Property Name WINNING COLORS 1525-10 B	Well Number 3
OGRIID No. <i>230387</i>	Operator Name PARALLEL PETROLEUM CORPORATION	Elevation 3479'

Surface Location

UL or lot No.	Section	Township	Range	Lot Idn	Feet from the	North/South line	Feet from the	East/West line	County
E	11	15 S	25 E		1880	NORTH	220	WEST	CHAVES

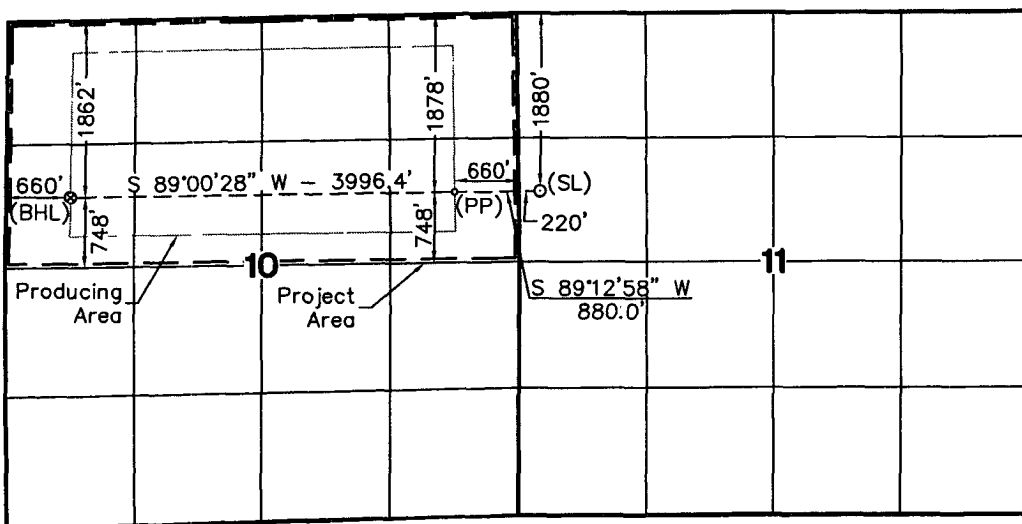
Bottom Hole Location If Different From Surface

UL or lot No.	Section	Township	Range	Lot Idn	Feet from the	North/South line	Feet from the	East/West line	County
E	10	15 S	25 E		1862	NORTH	660	WEST	CHAVES
Dedicated Acres 320	Joint or Infill	Consolidation Code	Order No.						

NO ALLOWABLE WILL BE ASSIGNED TO THIS COMPLETION UNTIL ALL INTERESTS HAVE BEEN CONSOLIDATED OR A NON-STANDARD UNIT HAS BEEN APPROVED BY THE DIVISION

NOTE:

- 1) Plane Coordinates shown hereon are Transverse Mercator Grid and Conform to the "New Mexico Coordinate System", New Mexico East Zone, North American Datum of 1927. Distances shown hereon are mean horizontal surface values.



Bottom Hole Location	Penetration Point	Surface Location
Plane Coordinate	Plane Coordinate	Plane Coordinate
X = 468,273.2	X = 472,268.0	X = 473,135.8
Y = 739,138.6	Y = 739,207.8	Y = 739,219.9
Geodetic Coordinate	Geodetic Coordinate	Geodetic Coordinate
Lat. 33°01'54.88\" N	Lat. 33°01'55.61\" N	Lat. 33°01'55.73\" N
Long. 104°26'12.68\" W	Long. 104°25'25.76\" W	Long. 104°25'15.42\" W
(NAD '27)	(NAD '27)	(NAD '27)

OPERATOR CERTIFICATION

I hereby certify the information contained herein is true and complete to the best of my knowledge and belief, and that this organization either owns a working interest or unleased mineral interest in the land including the proposed bottom hole location or has a right to drill this well at this location pursuant to a contract with an owner of such a mineral or working interest, or to a voluntary pooling agreement or a compulsory pooling order heretofore entered by the division.

Deane Darham 9-19-08
Signature Date
Deane Darham
Printed Name

SURVEYOR CERTIFICATION

I hereby certify that the well location shown on this plat was plotted from field notes of actual surveys made by me or under my supervision and that the same is true and correct to the best of my belief

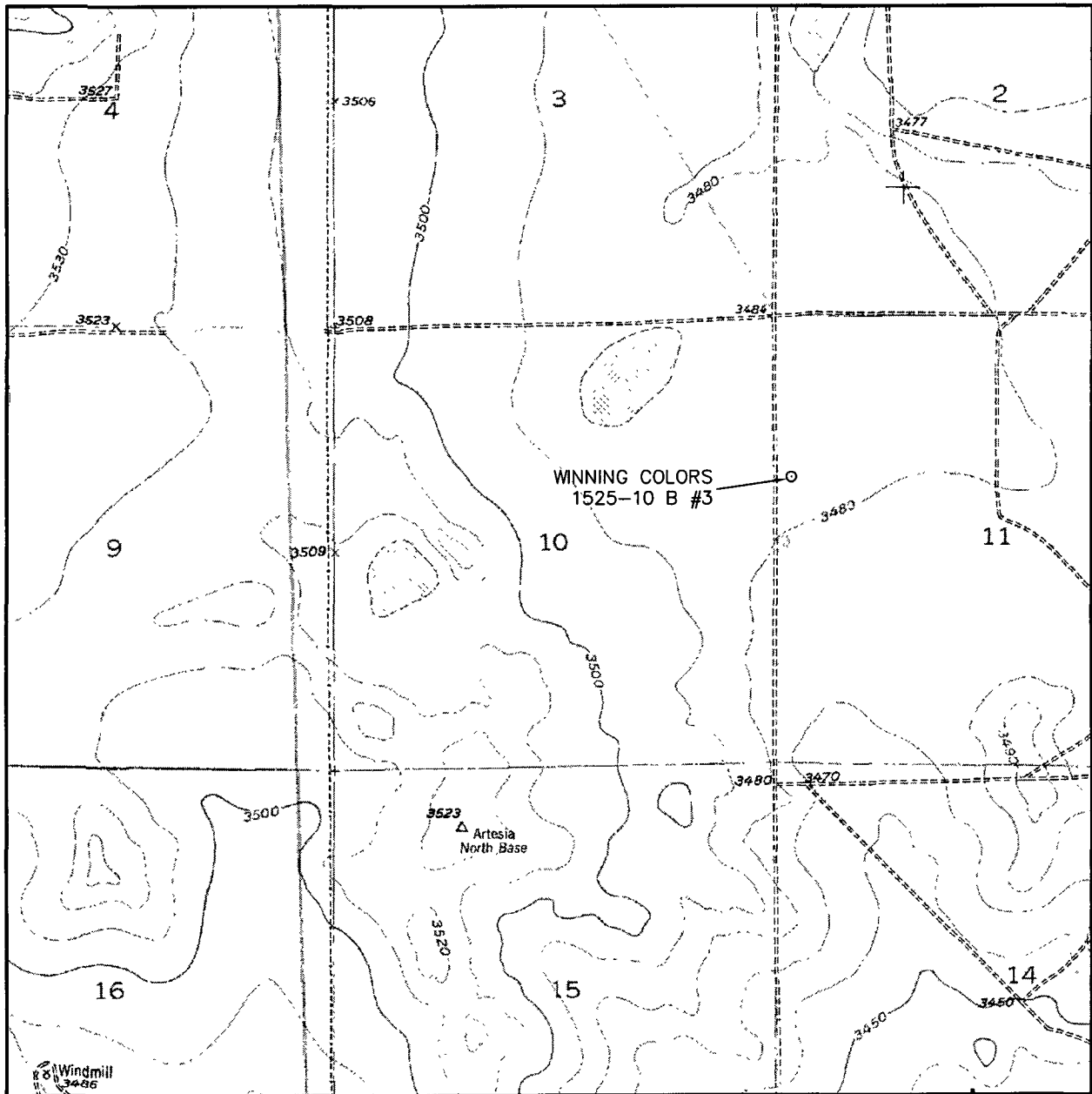
August 21, 2008

Date of Survey LVA
Signature & Seal of Professional Surveyor

M. McDonald
W.O. Num. 2008-0974

Certificate No. MACON McDONALD 12185

LOCATION VERIFICATION MAP



SCALE: 1" = 2000'

CONTOUR INTERVAL:
HAGERMAN SW - 10'

SEC. 11 TWP. 15-S RGE. 25-E

SURVEY N.M.P.M.

COUNTY CHAVES

DESCRIPTION 1880' FNL & 220' FWL

ELEVATION 3479'

OPERATOR PARALLEL PETROLEUM CORPORATION

LEASE WINNING COLORS 1525-10 B

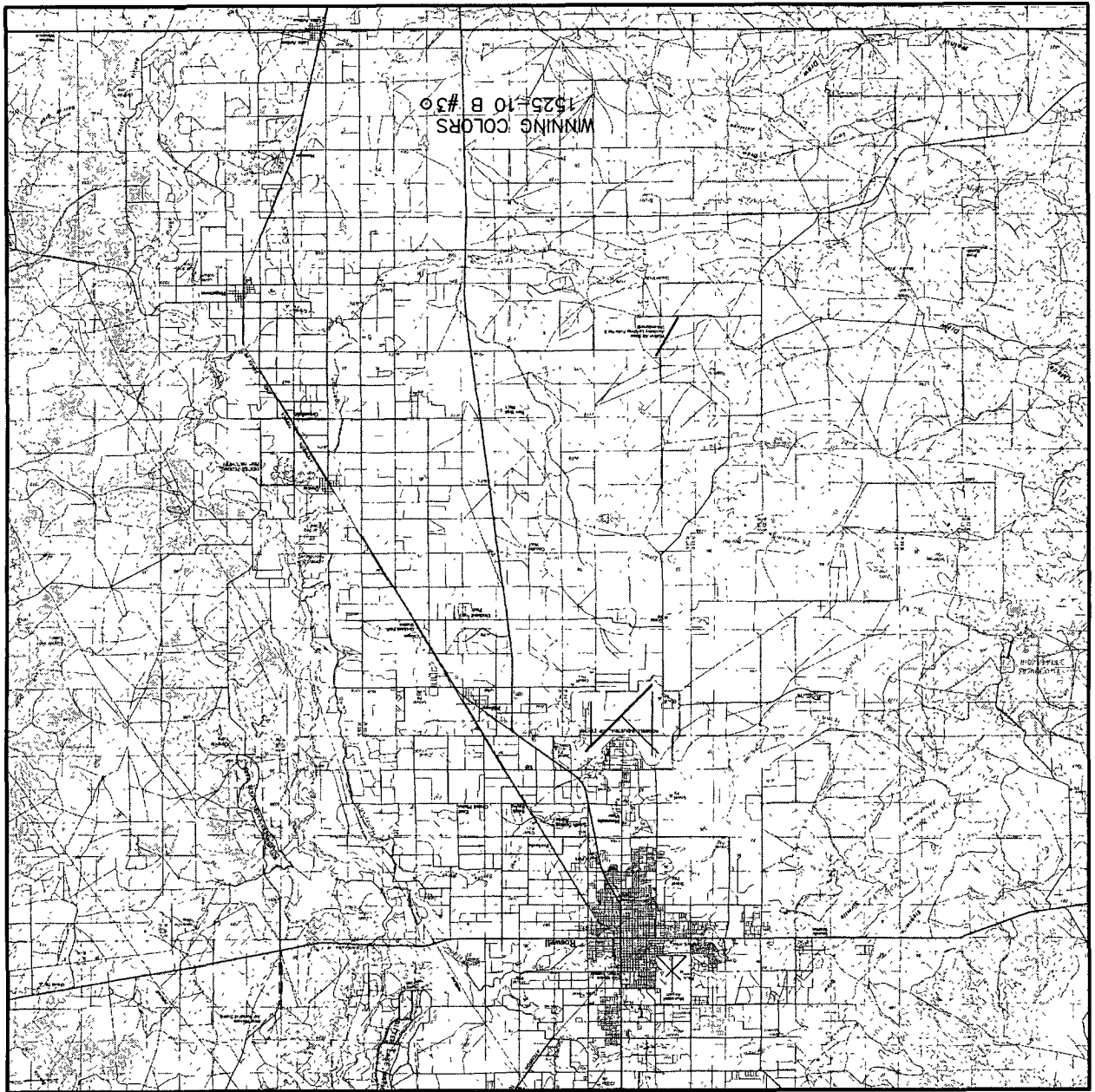
U.S.G.S. TOPOGRAPHIC MAP
HAGERMAN SW



**WEST
COMPANY**
of Midland, Inc.

110 W. LOUISIANA, STE. 110
MIDLAND TEXAS, 79701
(432) 687-0865 - (432) 687-0868 FAX

VICINITY MAP



SCALE: 1" = 5 MILES

SEC. 11 TWP. 15-S RGE. 25-E
SURVEY N.M.P.M.
COUNTY CHAVES
DESCRIPTION 1880' FNL & 220' FWL
ELEVATION 3479'
OPERATOR PARALLEL PETROLEUM CORPORATION
LEASE WINNING COLORS 1525-10 B



110 W. LOUISIANA, STE. 110
MIDLAND TEXAS, 79701
(432) 687-0865 - (432) 687-0868 FAX