

UNITED STATES  
DEPARTMENT OF THE INTERIOR  
BUREAU OF LAND MANAGEMENT

OCD-ARTESIA

FORM APPROVED  
OMB NO. 1004-0137  
Expires March 31, 2007

## SUNDRY NOTICES AND REPORTS ON WELLS

Do not use this form for proposals to drill or to re-enter an abandoned well. Use Form 3160-3 (APD) for such proposals.

SUBMIT IN TRIPLICATE - Other instructions on reverse side

OCT 27 2008

## 1. Type of Well

☒ Oil Well ☐ Gas Well ☐ Other

## 2. Name of Operator

BP America Production Company

## 3a. Address

P.O. Box 1089 Eunice NM 88231

## 3b. Phone No. (include area code)

575-394-1648

## 4. Location of Well (Footage, Sec., T., R., M., or Survey Description)

UL N, 330 FSL & 1900 FWL  
SECTION 35, T17S, R27E

ACCEPTED FOR RECORD

OCT 28 2008

## 12. CHECK APPROPRIATE BOX(ES) TO INDICATE NATURE OF NOTICE, REPORT, OR OTHER DATA

## TYPE OF SUBMISSION

☒ Notice of Intent☐ Subsequent Report☐ Final Abandonment Notice☐ Acidize☐ Alter Casing☐ Casing Repair☐ Change Plans☐ Convert to Injection☐ Deepen☐ Fracture Treat☐ New Construction☒ Plug and Abandon☐ Plug Back☐ Production (Start/Resume)☐ Reclamation☐ Recomplete☐ Temporarily Abandon☐ Water Disposal☐ Water Shut-Off☐ Well Integrity☐ Other \_\_\_\_\_

13. Describe Proposed or Completed Operation (clearly state all pertinent details, including estimated starting date of any proposed work and approximate duration thereof. If the proposal is to deepen directionally or recomple horizontally, give subsurface locations and measured and true vertical depths of all pertinent markers and zones. Attach the Bond under which the work will be performed or provide the Bond No. on file with BLM/BIA. Required subsequent reports shall be filed within 30 days following completion of the involved operations. If the operation results in a multiple completion or recompletion in a new interval, a Form 3160-4 shall be filed once testing has been completed. Final Abandonment Notices shall be filed only after all requirements, including reclamation, have been completed, and the operator has determined that the final site is ready for final inspection.)

1. MIRU PU. Check tubing, casing and surface pipe for pressure - bleed off into containment. Kill well as necessary. TOH LD rods and pump.
2. Monitor well and assure it's stable. Kill well as necessary. ND WH & install BOP (assure that BOP has been shop tested). TOH with production tubing.
3. TIH with CIBP on tubing and set at 5325'. Spot 250' cement plug on top of CIBP using 25 sx Class C neat. PU to 5050' +/- . Load hole with mud-laden fluid (9 ppg, 1250# gel/100 bbl). Test cag to 500 psi.
4. TOH to 3150'. Spot 250' balanced cement plug from 3150' to 2900' (Glorieta top = 3023') using 25 sx Class C + 2% CaCl2. PU to 2500'. WOC 2 hours minimum. Tag plug; re-spot as necessary. TOH LD tubing.
5. RU WL. Perforate 5 1/2" csg at 1034' with 4 squeeze holes (8 5/8" surface casing shoe = 984', Queen top=890', Yates top=128'). Estab. circ. through perfs at 1034' and out 5 1/2" x 8 5/8" annulus. RD WL.
6. Monitor well. ND BOP, install adaptor flange. Cement 5 1/2" csg from surface to 1034' and 5 1/2" x 8 5/8" annulus from 1034' to surface with Class C neat (est 250 sx - pump until good cement returns).
7. RD PU and clean location.
8. Dig out WH and cut-off casingheads to 3' below GL.
9. Install regulation dry-hole marker. Clean location and prepare location for NMOC inspections.

14. I hereby certify that the foregoing is true and correct  
Name (Printed/Typed)

Barry C. Price

Title

Area Operations Team Lead

Date 10/20/08

Approved by

Title

Date

OCT 25 2008

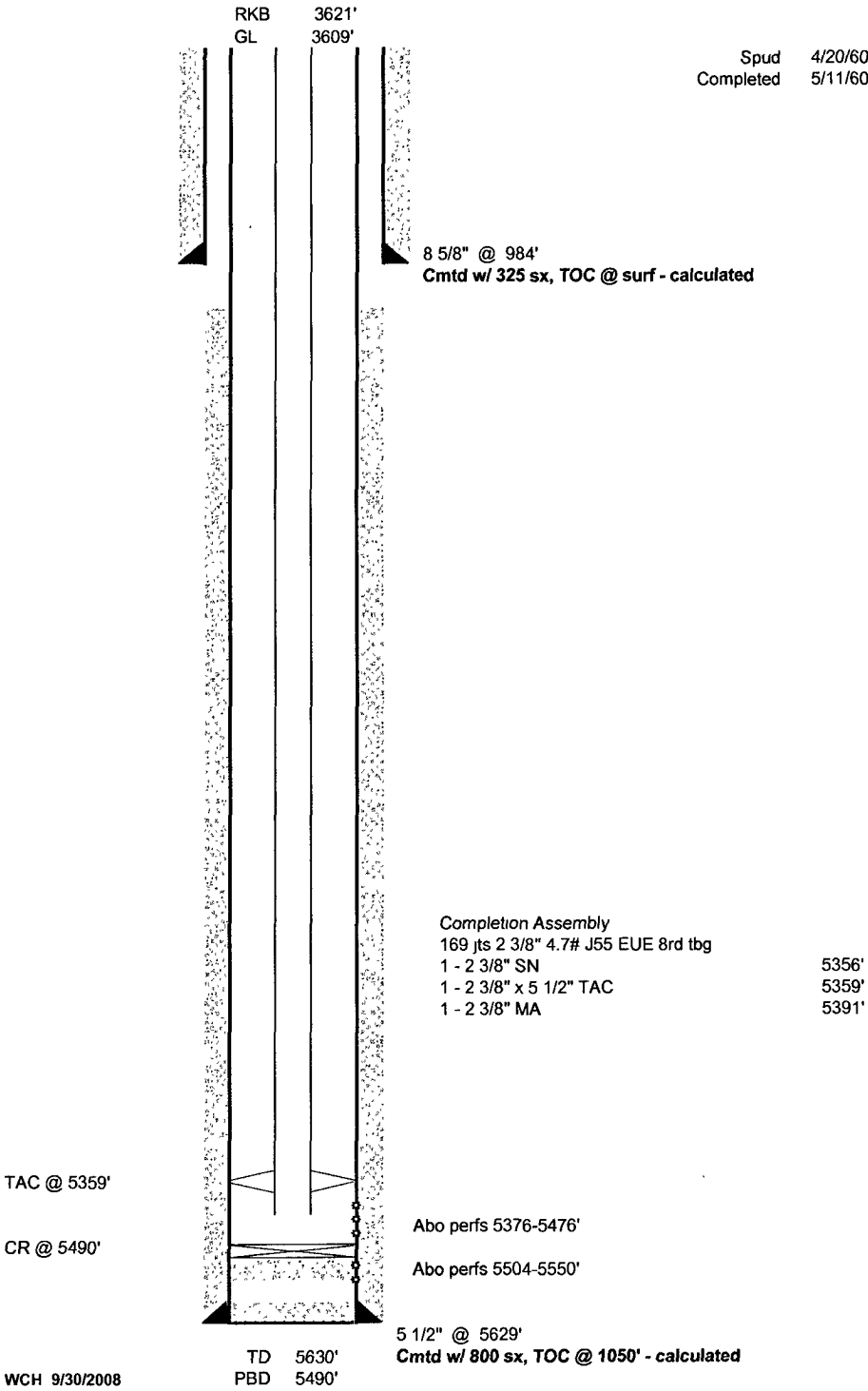
Conditions of approval, if any, are attached. Approval of this notice does not warrant or certify that the applicant holds legal or equitable title to those rights in the subject lease which would entitle the applicant to conduct operations thereon.

Office

Title 18 U.S.C. Section 1001, and Title 43 U.S.C. Section 1212, makes it a crime for any person knowingly and willfully to make to any department or agency of the United States any false, fictitious or fraudulent statements or representations as to any matter within its jurisdiction.

**Riverwolf #9**  
Empire Abo Field  
  
API No. 30-015-00637  
  
330' FSL & 1900' FWL  
Sec 35 - T17S - R27E  
Eddy County, New Mexico

**Status 9-30-2008**



**Riverwolf #9**  
 Empire Abo Field  
 API No. 30-015-00637  
 330' FSL & 1900' FWL  
 Sec 35 - T17S - R27E  
 Eddy County, New Mexico

**Proposed P & A**

Surf Csg Shoe, Queen,  
Yates, Top Plug  
 0' - 1034'  
 perf 5 1/2" csg @ 1034',  
 cmt 5 1/2" surf to 1034'  
 5 1/2" x 8 5/8" ann 1034'  
 to surf  
 250 sx

Spud 4/20/60  
 Completed 5/11/60

RKB 3621'  
 GL 3609'

8 5/8" @ 984'  
 Cmt w/ 325 sx, TOC @ surf - calculated

Glorieta Plug  
 2900' - 3150'  
 25 sx CI C - tag

Prod Zone (Abo) Plug  
 CIBP @ 5325'  
 25 sx CI C on top

CIBP @ 5325'  
 Abo perms 5376-5476'  
 Abo perms 5504-5550' cmt w/ 500 sx

CR @ 5490'

5 1/2" @ 5629'  
 Cmt w/ 800 sx, TOC @ 1050' - calculated

WCH 9/30/2008

TD 5630'  
 PBD 5490'

