

UNITED STATES  
DEPARTMENT OF THE INTERIOR  
BUREAU OF LAND MANAGEMENT

OCD-ARTESIA

FORM APPROVED  
OMB NO 1004-0137  
Expires: March 31, 2007

## WELL COMPLETION OR RECOMPLETION REPORT AND LOG

1a. Type of Well ☒ Oil Well ☐ Gas Well ☐ Dry ☐ Other  
b. Type of Completion ☐ New Well ☐ Work Over ☐ Deepen ☒ Plug Back ☒ Diff. Resvr.,  
Other \_\_\_\_\_

2 Name of Operator  
BEPCO, L.P.

3 Address  
P.O. BOX 2760 MIDLAND TX 79702-2760

3.a Phone No. (Include area code)  
(432)683-2277

4 Location of Well (Report location clearly and in accordance with Federal requirements)\*

At Surface UL N, 330' FSL, 1980' FWL

At top prod interval reported below Same

At total depth Same

DEC - 2 2008

OCD-ARTESIA

5. Lease Serial No.  
LC 063136A

6. If Indian, Allottee or Tribe Name

7. Unit or CA Agreement Name and no  
Poker Lake Unit

8. Lease Name and Well No  
Poker Lake Unit 57

9. API Well No.  
30-015-24269

10. Field and Pool, or Exploratory  
Undesignated (Bone Spring)

11 Sec, T., R, M, on Block and  
Survey or Area Sec. 28, T25S, R31E

12 County or Parish  
Eddy

13. State  
New Mexico

14. Date Spudded  
07/29/2008

15 Date T.D. Reached  
09/24/2008

16. Date Completed  
☐ D & A ☒ Ready to Prod  
10/21/2008

17. Elevations (DF, RKB, RT, GL)\*  
3315' GL

18. Total Depth MD 8325'  
TVD

19 Plug Back T.D. MD Re-perfed  
TVD

20. Depth Bridge Plug Set MD  
TVD

21 Type of Electric & Other Mechanical Logs Run (Submit copy of each)  
NA

22 Was well cored? ☐ No ☐ Yes (Submit analysis)  
Was DST run? ☐ No ☐ Yes (Submit analysis)  
Directional Survey? ☐ No ☐ Yes (Submit copy)

23 Casing and Liner Record (Report all strings set in well)

Hole Size	Size/Grade	Wt (#/ft.)	Top (MD)	Bottom (MD)	Stage Cement Depth	No of Sks. & Type of Cement	Slurry Vol. (BBL)	Cement Top*	Amount Pulled
12-1/4"	9-5/8"	36#	0	1018'		600 sxs		0' CIRC	
8-3/4"	7"	23 & 26#	0	6371'		400 sxs		6020' TS	

24 Tubing Record

Size	Depth Set (MD)	Packer Depth (MD)	Size	Depth Set (MD)	Packer Depth (MD)	Size	Depth Set (MD)	Packer Depth (MD)
2-3/8"	7741' SN	7576' TAC						

25. Producing Intervals

26. Perforation Record

Formation	Top	Bottom	Perforated Interval	Size	No. Holes	Perf Status
A) Bone Spring (Avalon)	8120'	8281'	8220-8230'	0.038	20	PRODUCING
B)						
C)						
D)						

27. Acid, Fracture, Treatment, Cement Squeeze, Etc.

Depth Interval	Amount and Type of Material
5970'-7217'	Drill out cmt retainers and cement from previously squeezed perms.
8220'-8230'	Frac'd w/ 25905 gals Lightning 2500 & 68150 #as 16/30 Ottawa sand into perms.
	Screened out with 3100#'s more sand in wellbore. Washed out sand to 8281'
	Re-fraced w/32864 gals lightning 2500 & 79653#'s 16/30 Siber Prop

28. Production - Interval A

Date First Produced	Test Date	Hours Tested	Test Production	Oil BBL	Gas MCF	Water BBL	Oil Gravity Corr API	Gas Gravity	Production Method
10/21/08	10/24/08	24	→	75	35	205			PUMPING
Choice Size	Tbg Press Flwg.	Csg. Press.	24 Hr. Rate	Oil BBL	Gas MCF	Water BBL	Gas - Oil Ratio	Well Status	
10/64"	SI 200	720	→				467	PRODUCING	NOV 30 2008

Production - Interval B

Date First Produced	Test Date	Hours Tested	Test Production	Oil BBL	Gas MCF	Water BBL	Oil Gravity Corr API	Gas Gravity	Production Method
			→						
Choke Size	Tbg Press Flwg.	Csg. Press.	24 Hr. Rate	Oil BBL	Gas MCF	Water BBL	Gas - Oil Ratio	Well Status	
	SI		→						

(See Instructions and spaces for additional data on page 2)

Accepted for record - NMOCD

## 28b. Production - Interval C

Date First Produced	Test Date	Hours Tested	Test Production →	Oil BBL	Gas MCF	Water BBL	Oil Gravity Corr. API	Gas Gravity	Production Method
Choke Size	Tbg. Press. Flwg. SI	Csg. Press.	24 Hr. Rate →	Oil BBL	Gas MCF	Water BBL	Gas : Oil Ratio	Well Status	

## 28c. Production - Interval D

Date First Produced	Test Date	Hours Tested	Test Production →	Oil BBL	Gas MCF	Water BBL	Oil Gravity Corr. API	Gas Gravity	Production Method
Choke Size	Tbg. Press. Flwg. SI	Csg. Press.	24 Hr. Rate →	Oil BBL	Gas MCF	Water BBL	Gas : Oil Ratio	Well Status	

29 Disposition of Gas (Sold, used for fuel, vented, etc.)

## 30. Summary of Porous Zones (Include Aquifers):

Show all important zones or porosity and contents thereof: Cored intervals and all drill-stem tests, including depth interval tested, cushion used, time tool open, flowing and shut-in pressures and recoveries.

## 31. Formation (Log) Markers

Formation	Top	Bottom	Descriptions, Contents, etc.	Name	Top
					Meas Depth
				T/Delaware Lime	4172'
				T/Ramsey Sand	4204'
				T/Bone Spring Lime	8120'

32. Additional remarks (include plugging procedure):

33. Indicate which items have been attached by placing a check in the appropriate boxes.

- ☐ Electrical/Mechanical Logs (1 full set req'd)   
 ☐ Geological Report   
 ☐ DST Report   
 ☐ Directional Survey  
☐ Sundry Notice for plugging and cement verification   
 ☐ Core Analysis   
 ☐ Other

34. I hereby certify that the foregoing and attached information is complete and correct as determined from all available records (see attached instructions)\*

Name (please print) ANN MOORETitle SENIOR PRODUCTION CLERK

Signature

Ann Moore

Date

10/24/2008

Title 18 U.S.C. Section 101 and Title 43 U.S.C. Section 1212, make it a crime for any person knowingly and willfully to make to any department or agency of the United States and false, fictitious or fraudulent statements or representations as to any matter within its jurisdiction.

**NEW MEXICO OIL CONSERVATION COMMISSION  
WELL LOCATION AND ACREAGE DEDICATION PLAT**

Form C-102  
Supersedes C-128  
Effective 1-1-65

All distances must be from the outer boundaries of the Section

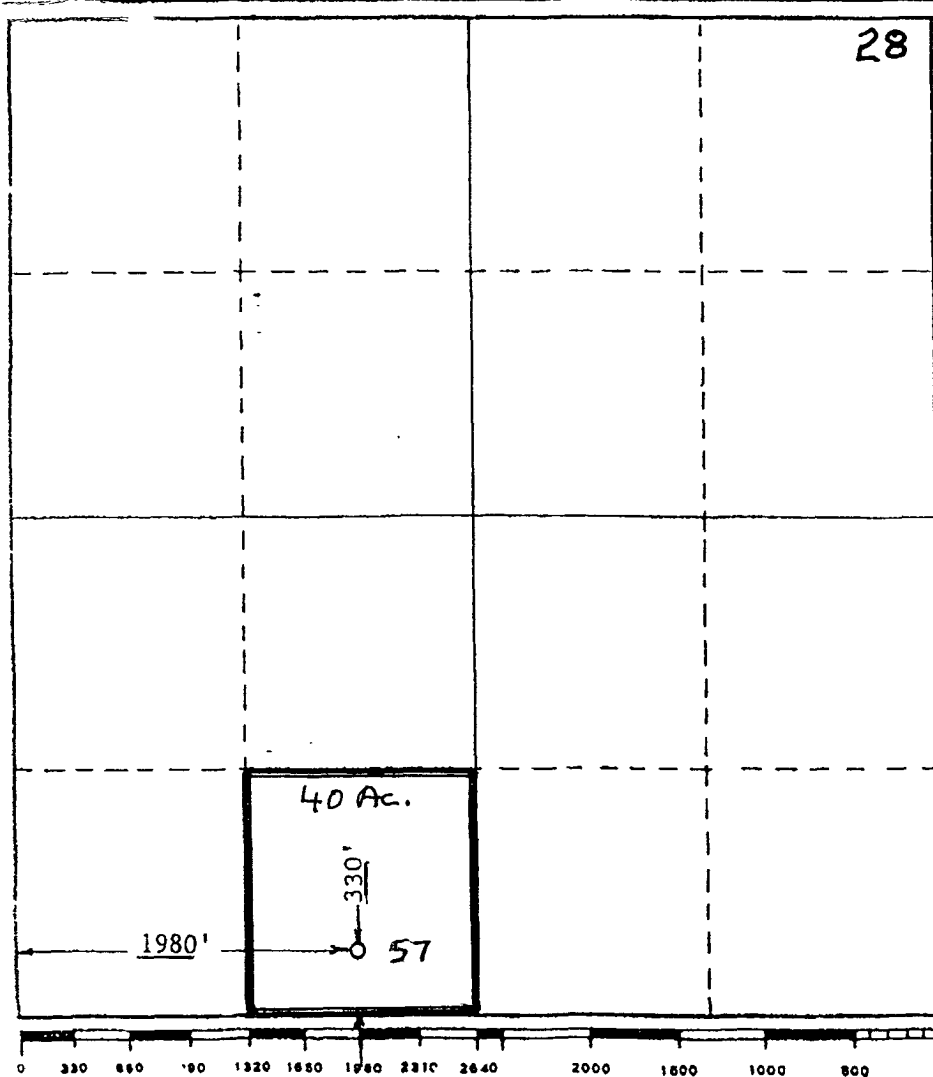
Operator <b>BEPCO, L. P.</b>			Lease <b>POKER LAKE UNIT</b>		Well No. <b>57</b>
Unit Letter <b>N</b>	Section <b>28</b>	Township <b>25 South</b>	Range <b>31 East</b>	County <b>Eddy</b>	
Actual Footage Location of Well: <div style="display: flex; justify-content: space-between;"> <span>330 feet from the South line and</span> <span>1980 feet from the West line</span> </div>					
Ground Level Elev. <b>3315.9</b>	Producing Formation <b>BONE SPRING</b>	Pool <b>UNDESIGNATED</b>		Dedicated Acreage: <b>40</b> Acres	

1. Outline the acreage dedicated to the subject well by colored pencil or hatchure marks on the plat below.
2. If more than one lease is dedicated to the well, outline each and identify the ownership thereof (both as to working interest and royalty).
3. If more than one lease of different ownership is dedicated to the well, have the interests of all owners been consolidated by communitization, unitization, force-pooling, etc?

☒ Yes    ☐ No    If answer is "yes," type of consolidation \_\_\_\_\_

If answer is "no," list the owners and tract descriptions which have actually been consolidated. (Use reverse side of this form if necessary.) \_\_\_\_\_

No allowable will be assigned to the well until all interests have been consolidated (by communitization, unitization, forced-pooling, or otherwise) or until a non-standard unit, eliminating such interests, has been approved by the Commission.



**CERTIFICATION**

I hereby certify that the information contained herein is true and complete to the best of my knowledge and belief.

*Mark A. Gosch*

Name

Mark A. Gosch

Position

DRILLING ENGINEER

Company

PERRY R. BASS

Date

8-13-82

I hereby certify that the well location shown on this plat was plotted from field notes of actual surveys made by me or under my supervision, and that the same is true and correct to the best of my knowledge and belief.

Date Surveyed

August 11, 1982

Registered Professional Engineer  
and/or Land Surveyor

*Ronald J. Eldon*

Certificate No. **JOHN W. WEST 876**  
**PATRICK A. ROMERO 8863**  
**Ronald J. Eldon 3239**