

OCD-ARTESIA
FEB - 3 2009

29



Form 3160-3
(April 2004)

FORM APPROVED
OMB No 1004-0137
Expires March 31, 2007

UNITED STATES
DEPARTMENT OF THE INTERIOR
BUREAU OF LAND MANAGEMENT

APPLICATION FOR PERMIT TO DRILL OR REENTER

5. Lease Serial No
SHL LC-061638 BHL NM-0556811

6. If Indian, Allottee or Tribe Name

7. If Unit or CA Agreement, Name and No
Pending

8. Lease Name and Well No.
Blasting Cap 13 Federal Com No. 3

9. API Well No.
30-015-36921

10. Field and Pool, or Exploratory
Abo Wildcat County Line Tank
97197

11. Sec., T. R. M. or Blk. and Survey or Area
13-16S-29E

1a. Type of Work DRILL REENTER

1b. Type of Well: Oil Well Gas Well Other Single Zone Multiple Zone

2. Name of Operator
1 Cimarex Energy Co. of Colorado 162683

3a. Address
PO Box 140907; Irving, TX 75014

3b. Phone No. (include area code)
972-401-3111

4. Location of Well (Report location clearly and in accordance with any State requirements. *)
At Surface 1980 FNL & 330 FWL
At proposed prod. Zone 1980 FNL & 330 FEL Horizontal Abo Test

14 Distance in miles and direction from nearest town or post office*
12. County or Parish Eddy
13. State NM

15. Distance from proposed* location to nearest property or lease line, ft (Also to nearest drig unit line if any) 330'
16. No of acres in lease
NM-0556811 1480 acres
LC-061638 1040 acres
17. Spacing Unit dedicated to this well
S2N2-160

18. Distance from proposed location* to nearest well, drilling, completed, applied for, on this lease, ft. N/A
19. Proposed Depth
Pilot Hole 7650'
MD 11788'
TVD 7300'
20: BLM/BIA Bond No on File
NM-2575

21. Elevations (Show whether DF, KDB, RT, GL, etc) 3734' GR
22. Approximate date work will start* 12/15/2008
23. Estimated duration 30-35 days

24. Attachments

The following, completed in accordance with the requirements of Onshore Oil and Gas Order No. 1, shall be attached to this form

- 1. Well plat certified by a registered surveyor
- 2. A Drilling Plan
- 3. A Surface Use Plan (if the location is on National Forest System Lands, the SUPO shall be filed with the appropriate Forest Service Office).
- 4. Bond to cover the operations unless covered by an existing bond on file (see Item 20 above).
- 5. Operator Certification
- 6. Such other site specific information and/or plans as may be required by the authorized officer

25. Signature *Natalie Krueger*
Name (Printed/Typed) Natalie Krueger
Date 10.02.08

Title Regulatory Analyst

Approved By (Signature) /s/ James Stovall
Name (Printed/Typed) /s/ James Stovall
Date JAN 29 2009

Title FIELD MANAGER
Office CARLSBAD FIELD OFFICE

Application approval does not warrant or certify that the applicant holds legal or equitable title to those rights in the subject lease which would entitle the applicant to conduct operations thereon.
Conditions of approval, if any, are attached. APPROVAL FOR TWO YEARS

Title 18 U.S.S. Section 1001 and Title 43 U.S.C. Section 1212, make it a crime for any person knowingly and willfully to make to any department or agency of the United States any false, fictitious, or fraudulent statements or representations as to any matter within its jurisdiction.

ROSWELL CONTROLLED WATER BASIN
SEE ATTACHED FOR
CONDITIONS OF APPROVAL

Handwritten initials

APPROVAL SUBJECT TO
GENERAL REQUIREMENTS
AND SPECIAL STIPULATIONS
ATTACHED

DISTRICT I
1625 N. French Dr., Hobbs, NM 88240

DISTRICT II
1301 W. Grand Avenue, Artesia, NM 88210

DISTRICT III
1000 Rio Erazos Rd., Aztec, NM 87410

DISTRICT IV
1220 S. St. Francis Dr., Santa Fe, NM 87505

State of New Mexico
Energy, Minerals and Natural Resources Department

Form C-102
Revised October 12, 2005

Submit to Appropriate District Office
State Lease - 4 Copies
Fee Lease - 3 Copies

OIL CONSERVATION DIVISION
1220 South St. Francis Dr.
Santa Fe, New Mexico 87505

AMENDED REPORT

WELL LOCATION AND ACREAGE DEDICATION PLAT

API Number 30-015-30921	Pool Code 97197	Pool Name Countyline Tankabo Wildcat
Property Code 37173	Property Name BLASTING CAP "13" FEDERAL COM	Well Number 3
OGRID No. 162683	Operator Name CIMAREX ENERGY CO. OF COLORADO	Elevation 3734'

Surface Location

UL or lot No.	Section	Township	Range	Lot Idn	Feet from the	North/South line	Feet from the	East/West line	County
E	13	16 S	29 E		1980	NORTH	330	WEST	EDDY

Bottom Hole Location If Different From Surface

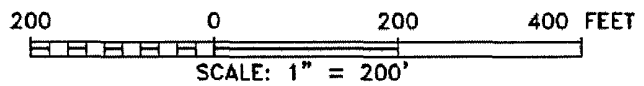
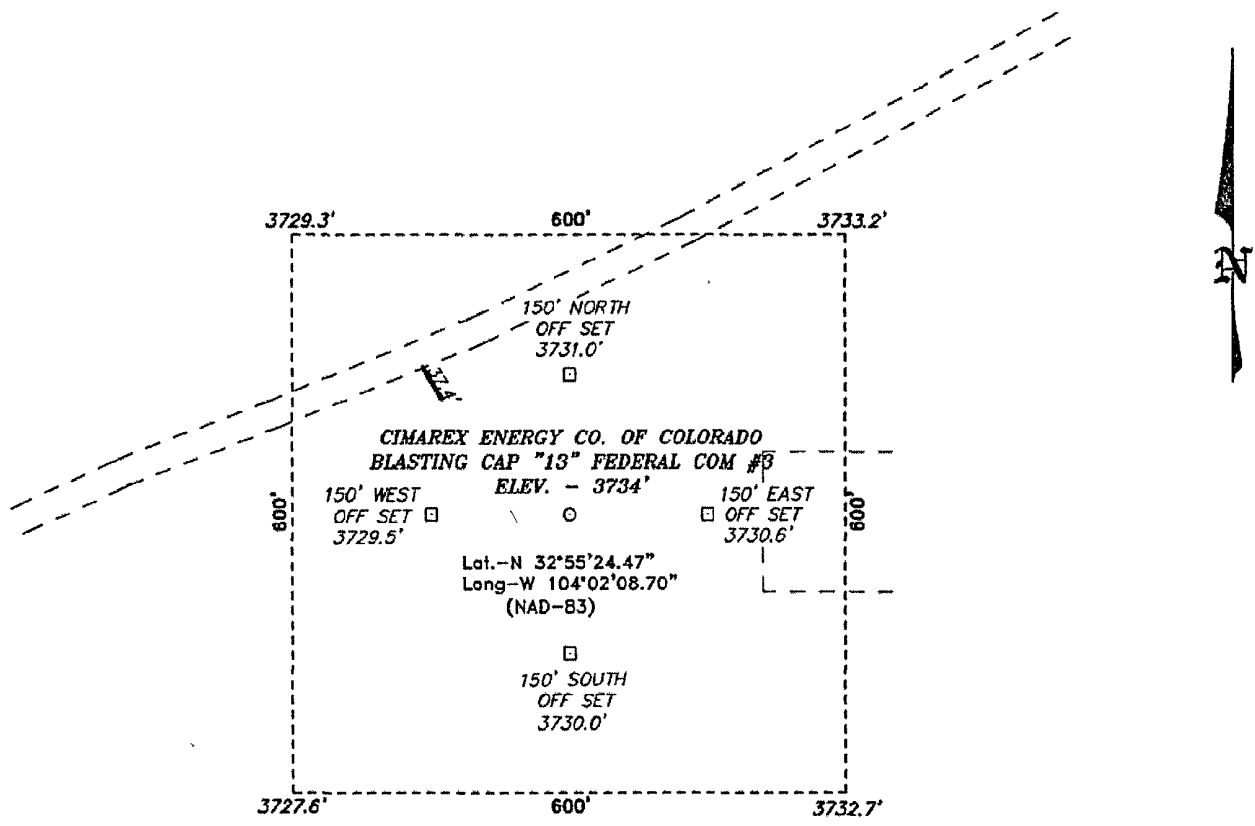
UL or lot No.	Section	Township	Range	Lot Idn	Feet from the	North/South line	Feet from the	East/West line	County
H	13	16 S	29 E		1980	NORTH	330	EAST	EDDY

Dedicated Acres 160	Joint or Infill	Consolidation Code P	Order No.
------------------------	-----------------	-------------------------	-----------

NO ALLOWABLE WILL BE ASSIGNED TO THIS COMPLETION UNTIL ALL INTERESTS HAVE BEEN CONSOLIDATED OR A NON-STANDARD UNIT HAS BEEN APPROVED BY THE DIVISION

<p>SHL 1980 FNL & 330 FWL</p> <p>BHL 1980 FNL & 330 FEL</p> <p>P.P. 1980 FNL & 330 FWL</p>		<p>OPERATOR CERTIFICATION</p> <p>I hereby certify that the information contained herein is true and complete to the best of my knowledge and belief, and that this organization either owns a working interest or unleased mineral interest in the land including the proposed bottom hole location pursuant to a contract with an owner of such a mineral or working interest, or to a voluntary pooling agreement or a compulsory pooling order heretofore entered by the division.</p> <p><i>Natalie Krueger</i> 10-02-08 Signature Date</p> <p>Natalie Krueger Printed Name</p>
<p>SURFACE LOCATION Lat - N32°55'24.47" Long - W104°02'08.70" NMSPCE- N 699819.3 E 632648.7 (NAD-83)</p> <p>LC-061638</p>	<p>BOTTOM HOLE LOCATION Lat - N32°55'24.33" Long - W104°01'14.51" NMSPCE- N 699818.907 E 637267.225 (NAD-83)</p> <p>LC-067610-A</p>	<p>SURVEYOR CERTIFICATION</p> <p>I hereby certify that the well location shown on this plat was plotted from field notes of actual surveys made by me or under my supervision and that the same is true and correct to the best of my belief.</p> <p>APRIL 25, 2008 Date Surveyed</p> <p>GARY L. JONES Signature Professional Surveyor</p> <p>Certificate No. Gary L. Jones 7977</p> <p>BASIN SURVEYS</p>

SECTION 13, TOWNSHIP 16 SOUTH, RANGE 29 EAST, N.M.P.M.,
 EDDY COUNTY, NEW MEXICO.



Directions to Location:

FROM THE LOCO HILLS, GO NORTH ON CO. RD. 217 FOR 7.5 MILES TO LEASE ROAD, ON LEASE ROAD GO WESTERLY FOR 3.4 MILES TO LEASE ROAD, ON LEASE ROAD GO SOUTHERLY 0.2 MILES TO LEASE ROAD, ON LEASE ROAD GO EASTERLY 0.1 MILES TO PROPOSED LEASE ROAD.

BASIN SURVEYS P.O. BOX 1786—HOBBS, NEW MEXICO

W.O. Number: 19570 Drawn By: J. SMALL

Date: 05-02-2008 Disk: JMS 19570

CIMAREX ENERGY CO. OF COLORADO	
REF: BLASTING CAP "13" FEDERAL COM #3 / WELL PAD TOPO	
THE BLASTING CAP "13" FEDERAL COM #3 LOCATED 1980'	
FROM THE NORTH LINE AND 330' FROM THE WEST LINE OF	
SECTION 13, TOWNSHIP 16 SOUTH, RANGE 29 EAST,	
N.M.P.M., EDDY COUNTY, NEW MEXICO.	
Survey Date: 04-25-2008	Sheet 1 of 1 Sheets

Application to Drill
Blasting Cap 13 Federal Com No. 2
Cimarex Energy Co. of Colorado
Unit E, Section 13
T16S R29E, Eddy County, NM

In response to questions asked under Section II B of Bulletin NTL-6, the following information is provided for your consideration:

- 1 Location: SHL 1980 FNL & 330 FWL
BHL 1980 FNL & 330 FEL

- 2 Elevation above sea level: 3734' GR

- 3 Geologic name of surface formation: Quaternary Alluvium Deposits

- 4 Drilling tools and associated equipment: Conventional rotary drilling rig using fluid as a circulating medium for solids removal.

- 5 Proposed drilling depth: Pilot Hole 7650' MD 11788' TVD 7300'

- 6 Estimated tops of geological markers:

Queen	2,200'
San Andres	2,950'
Abo Shale	6,020'
Lower Abo Dolomite	7,240'
Wolfcamp	7,350'

- 7 Possible mineral bearing formation:

Abo	Oil	Primary
Queen	Oil	
San Andres	Oil	

8 Proposed Mud Circulating System:

Depth	Mud Wt	Visc	Fluid Loss	Type Mud
0' to 450'	8.4 - 8.6	28-29	May lose circ	Fresh water gel spud mud
450' to 2,650'	10.0	28-29	May lose circ	Brine Water
2,650' to 7,650'	8.4 - 9.5	29-32	NC	Fresh water and brine, use hi-vis sweeps to keep hole clean
KOP 7060' to MD 11788' TVD 7300'	8.4 - 9.5	29-33	NC	2% KCL

Sufficient mud materials will be kept on location at all times in order to combat lost circulation, or unexpected kicks. In order to run DSTs, open hole logs, and casing, the viscosity and water loss may have to be adjusted in order to meet these needs. Mud system monitoring equipment with derrick floor indicators and visual/audio alarms shall be installed and operative prior to drilling into the Wolfcamp formation. This equipment will remain in use until production casing is run and cemented.

Application to Drill
Blasting Cap 13 Federal Com No. 2
Cimarex Energy Co. of Colorado
Unit E, Section 13
T16S R29E, Eddy County, NM

9 Proposed drilling Plan

Drill pilot hole to 7650.' Set kick-off plug at 7070.' Mill window from 7055' to 7065' and kick off horizontal leg at 7060.' Drill 6 7/8" hole to 11788' MD, 7300' TVD. Run 4 1/2" 11.6# P-110 BTC from RSB Packer/Liner Hanger @ 6953 to EOC @ 7358' and LTC from 7358' to TD (MD 11788' TVD 7300'). Peak Systems Liner will not require cementing.

10 Casing Program:

Hole Size	Depth	Casing OD	Weight	Thread	Collar	Grade
17 1/2"	0' to 450'	New 13 3/8"	48#	8-R	STC	H-40
12 1/4"	0' to 2,650'	New 9 5/8"	40#	8-R	LTC	J/K-55
8 3/4"	0' to 7,650'	New 7"	26#	8-R	LTC	P-110
6 7/8"	6953' to 7,358'	New 4 1/2"	11.6#	8-R	BTC	P-110
6 7/8"	7358' to MD 11788' TVD 7300'	New 4 1/2"	11.6#	8-R	LTC	P-110

11 Cementing Program: *See COA*

13 3/8" **Surface** Lead: 300 sx Thixotropic/Premium Plus + 10# Gilsonite + 10# Cal-Seal + 1% CaCl + 0.125# Poly-e-flake (wt 14.2, yld 1.64)
Tail: 220 sx Premium Plus + 2% CaCl (wt 14.8, yld 1.35)
TOC Surface

9 5/8" **Intermediate** Lead: 425 sx Interfill C + 0.125# flocele (wt 11.9, yld 2.45)
Tail: 200 sx Prem Plus + 1% CaCl (wt 14.8, yld 1.33)
TOC Surface

7" **Production** 1550 sx Super H + 0.5% Halad-344 + 0.4% CFR-3 + 1lbm/sk salt + 5 lb/sk Gilsonite + 0.125 lb/sk PolyEflake + 0.35% HR-7 (wt 13.0 ppg, yld 1.67 cf/sk)
TOC 2300'

4 1/2" **Liner** No cement for Iso-Pak liner.

Fresh water will be protected by setting 13 3/8" casing at 450' and cementing to Surface
Hydrocarbon zones will be protected by setting 9 5/8" casing at 2,650' and cementing to Surface
and by setting 7" casing at 7,650' and cementing to 2300'

Cimarex uses the following minimum safety factors:

Burst	Collapse	Tension
1.125	1.125	1.80

Application to Drill
Blasting Cap 13 Federal Com No. 2
Cimarex Energy Co. of Colorado
Unit E, Section 13
T16S R29E, Eddy County, NM

12 Pressure control Equipment:

Exhibit "E". A 13 $\frac{3}{8}$ " 5000 PSI working pressure B.O.P. consisting of one set of blind rams and one set of pipe rams and a 5000 # annular type preventer. A choke manifold and 120 gallon accumulator with floor and remote operating stations and auxiliary power system. Rotating head below 6000'. A kelly cock will be installed and maintained in operable condition and a drill string safety valve in the open position will be available on the rig floor.

BOP unit will be hydraulically operated. BOP will be nipped up and operated at least once a day while drilling and the blind rams will be operated when out of hole during trips. No abnormal pressure or temperature is expected while drilling. From the base of the surface pipe through the running of production casing, the well will be equipped with a 5000 psi BOP system.

See COA
We are requesting a variance for testing the 13 $\frac{3}{8}$ " surface casing from Onshore Order No. 2, which states that all casing strings below the conductor shall be pressure tested to 0.22 psi per foot or 1500 psi, whichever is greater, but not to exceed 70% of the manufacturer's stated maximum internal yield. We are requesting to test the 13 $\frac{3}{8}$ " casing to 1000 psi using rig pumps. The BOP will be tested to 5000 PSI by an independent service company.

13 Testing, Logging and Coring Program:

- A. Mud logging program: 2 man unit from 2650' to TD
- B. Electric logging program: CNL / LDT / CAL / GR, DLL / CAL / GR
- C. No DSTs or cores are planned at this time.

14 Potential Hazards:

No abnormal pressures or temperatures are expected. The area has a potential H2S hazard. An H2S drilling plan is attached. Adequate flare lines will be installed off the mud / gas separator where gas may be flared safely. All personnel will be familiar with all aspects of safe operation of equipment being used.

Estimated BHP **4000 psi** Estimated BHT **175**

15 Road and location construction will begin after BLM approval of APD. Anticipated spud date as soon as approved.

Drilling expected to take 30-35 days

If production casing is run an additional 30 days will be required to complete and construct surface facilities.

16 Other Facets of Operations:

After running casing, cased hole gamma ray neutron collar logs will be run from total depth over possible pay intervals.

Abo pay will be perforated and stimulated.

The proposed well will be tested and potentialized as **an oil well.**



Planned Wellpath Report

Preliminary
Page 1 of 4



INTEQ

REFERENCE WELLPATH IDENTIFICATION

Operator	Cimarex Energy Co. of Colorado	Slot	No. 3H SHL
Area	Eddy County, NM	Well	No. 3H
Field	(Blasting) SEC. 13, T16S, R29E	Wellbore	No. 3H PWB
Facility	Blasting Cap 13 FED COM No. 3H		

REPORT SETUP INFORMATION

Projection System	NAD83 / TM New Mexico State Planes, Eastern Zone (3001), US feet	Software System	WellArchitect® 2.0
North Reference	Grid	User	Victor Hernandez
Scale	0.999919	Report Generated	8/4/2008 at 4:52:03 PM
Convergence at slot	0.16° East	Database/Source file	WA_Midland/No. 3H_PWB.xml

WELLPATH LOCATION

	Local coordinates		Grid coordinates		Geographic coordinates	
	North[ft]	East[ft]	Easting[USft]	Northing[USft]	Latitude	Longitude
Slot Location	0.00	0.00	632648.70	699819.30	32°55'24.466"N	104°02'08.697"W
Facility Reference Pt			632648.70	699819.30	32°55'24.466"N	104°02'08.697"W
Field Reference Pt			632701.50	697175.60	32°54'58.306"N	104°02'08.165"W

WELLPATH DATUM

Calculation method	Minimum curvature	Rig on No. 3H SHL (RT) to Facility Vertical Datum	18.00ft
Horizontal Reference Pt	Facility Center	Rig on No. 3H SHL (RT) to Ground Elev.	3752.00ft
Vertical Reference Pt	Rig on No. 3H SHL (RT)	Facility Vertical Datum to Mud Line (Facility)	0.00ft
MD Reference Pt	Rig on No. 3H SHL (RT)	Section Origin	N 0.00, E 0.00 ft
Field Vertical Reference	Ground Elev.	Section Azimuth	90.00°



Planned Wellpath Report

Preliminary
Page 2 of 4



INTEQ

REFERENCE WELLPATH IDENTIFICATION			
Operator	Cimarex Energy Co. of Colorado	Slot	No. 3H SHL
Area	Eddy County, NM	Well	No. 3H
Field	(Blasting) SEC. 13, T16S, R29E	Wellbore	No. 3H PWB
Facility	Blasting Cap 13 FED COM No. 3H		

WELLPATH DATA (51 stations) † = interpolated/extrapolated station								
MD [ft]	Inclination [°]	Azimuth [°]	TVD [ft]	Vert Sect [ft]	North [ft]	East [ft]	DLS [°/100ft]	Comments
0.00	0.000	90.005	0.00	0.00	0.00	0.00	0.00	Tie On
7060.00	0.000	90.005	7060.00	0.00	0.00	0.00	0.00	EST. KOP
7160.00†	30.000	90.005	7155.49	25.59	0.00	25.59	30.00	
7260.00†	60.000	90.005	7225.40	95.49	-0.01	95.49	30.00	
7357.89†	89.366	90.005	7250.97	188.87	-0.02	188.87	30.00	EOC
7360.00†	89.366	90.005	7251.00	190.99	-0.02	190.99	0.00	
7460.00†	89.366	90.005	7252.10	290.98	-0.02	290.98	0.00	
7560.00†	89.366	90.005	7253.21	390.97	-0.03	390.97	0.00	
7660.00†	89.366	90.005	7254.32	490.97	-0.04	490.97	0.00	
7760.00†	89.366	90.005	7255.42	590.96	-0.05	590.96	0.00	
7860.00†	89.366	90.005	7256.53	690.96	-0.06	690.96	0.00	
7960.00†	89.366	90.005	7257.64	790.95	-0.07	790.95	0.00	
8060.00†	89.366	90.005	7258.74	890.94	-0.08	890.94	0.00	
8160.00†	89.366	90.005	7259.85	990.94	-0.08	990.94	0.00	
8260.00†	89.366	90.005	7260.96	1090.93	-0.09	1090.93	0.00	
8360.00†	89.366	90.005	7262.06	1190.92	-0.10	1190.92	0.00	
8460.00†	89.366	90.005	7263.17	1290.92	-0.11	1290.92	0.00	
8560.00†	89.366	90.005	7264.28	1390.91	-0.12	1390.91	0.00	
8660.00†	89.366	90.005	7265.38	1490.91	-0.13	1490.91	0.00	
8760.00†	89.366	90.005	7266.49	1590.90	-0.14	1590.90	0.00	
8860.00†	89.366	90.005	7267.60	1690.89	-0.14	1690.89	0.00	
8960.00†	89.366	90.005	7268.70	1790.89	-0.15	1790.89	0.00	
9060.00†	89.366	90.005	7269.81	1890.88	-0.16	1890.88	0.00	
9160.00†	89.366	90.005	7270.92	1990.88	-0.17	1990.88	0.00	
9260.00†	89.366	90.005	7272.02	2090.87	-0.18	2090.87	0.00	
9360.00†	89.366	90.005	7273.13	2190.86	-0.19	2190.86	0.00	
9460.00†	89.366	90.005	7274.24	2290.86	-0.19	2290.86	0.00	
9560.00†	89.366	90.005	7275.34	2390.85	-0.20	2390.85	0.00	
9660.00†	89.366	90.005	7276.45	2490.85	-0.21	2490.85	0.00	
9760.00†	89.366	90.005	7277.56	2590.84	-0.22	2590.84	0.00	



Planned Wellpath Report

Preliminary
Page 3 of 4



INTEQ

REFERENCE WELLPATH IDENTIFICATION			
Operator	Cimarex Energy Co. of Colorado	Slot	No. 3H SHL
Area	Eddy County, NM	Well	No. 3H
Field	(Blasting) SEC. 13, T16S, R29E	Wellbore	No. 3H PWB
Facility	Blasting Cap 13 FED COM No. 3H		

WELLPATH DATA (51 stations) † = interpolated/extrapolated station								
MD [ft]	Inclination [°]	Azimuth [°]	TVD [ft]	Vert Sect [ft]	North [ft]	East [ft]	DLS [°/100ft]	Comments
9860.00†	89.366	90.005	7278.66	2690.83	-0.23	2690.83	0.00	
9960.00†	89.366	90.005	7279.77	2790.83	-0.24	2790.83	0.00	
10060.00†	89.366	90.005	7280.88	2890.82	-0.25	2890.82	0.00	
10160.00†	89.366	90.005	7281.98	2990.81	-0.25	2990.81	0.00	
10260.00†	89.366	90.005	7283.09	3090.81	-0.26	3090.81	0.00	
10360.00†	89.366	90.005	7284.20	3190.80	-0.27	3190.80	0.00	
10460.00†	89.366	90.005	7285.30	3290.80	-0.28	3290.80	0.00	
10560.00†	89.366	90.005	7286.41	3390.79	-0.29	3390.79	0.00	
10660.00†	89.366	90.005	7287.52	3490.78	-0.30	3490.78	0.00	
10760.00†	89.366	90.005	7288.62	3590.78	-0.31	3590.78	0.00	
10860.00†	89.366	90.005	7289.73	3690.77	-0.31	3690.77	0.00	
10960.00†	89.366	90.005	7290.84	3790.77	-0.32	3790.77	0.00	
11060.00†	89.366	90.005	7291.94	3890.76	-0.33	3890.76	0.00	
11160.00†	89.366	90.005	7293.05	3990.75	-0.34	3990.75	0.00	
11260.00†	89.366	90.005	7294.15	4090.75	-0.35	4090.75	0.00	
11360.00†	89.366	90.005	7295.26	4190.74	-0.36	4190.74	0.00	
11460.00†	89.366	90.005	7296.37	4290.73	-0.37	4290.73	0.00	
11560.00†	89.366	90.005	7297.47	4390.73	-0.37	4390.73	0.00	
11660.00†	89.366	90.005	7298.58	4490.72	-0.38	4490.72	0.00	
11760.00†	89.366	90.005	7299.69	4590.72	-0.39	4590.72	0.00	
11788.20	89.366	90.005	7300.00 ¹	4618.91	-0.39	4618.91	0.00	No. 3H BHL



Planned Wellpath Report

Preliminary

Page 4 of 4



INTEQ

REFERENCE WELLPATH IDENTIFICATION

Operator	Cimarex Energy Co. of Colorado	Slot	No. 3H SHL
Area	Eddy County, NM	Well	No. 3H
Field	(Blasting) SEC. 13, T16S, R29E	Wellbore	No. 3H PWB
Facility	Blasting Cap 13 FED COM No. 3H		

TARGETS

Name	MD [ft]	TVD [ft]	North [ft]	East [ft]	Grid East [srv ft]	Grid North [srv ft]	Latitude	Longitude	Shape
1) No. 3H BHL	11788.20	7300.00	-0.39	4618.91	637267.22	699818.91	32°55'24.330"N	104°01'14.511"W	point

SURVEY PROGRAM Ref Wellbore: No. 3H PWB Ref Wellpath: Preliminary

Start MD [ft]	End MD [ft]	Positional Uncertainty Model	Log Name/Comment	Wellbore
18.00	11788.20	NaviTrak (Standard)		No. 3H PWB



Cimarex Energy Co. of Colorado

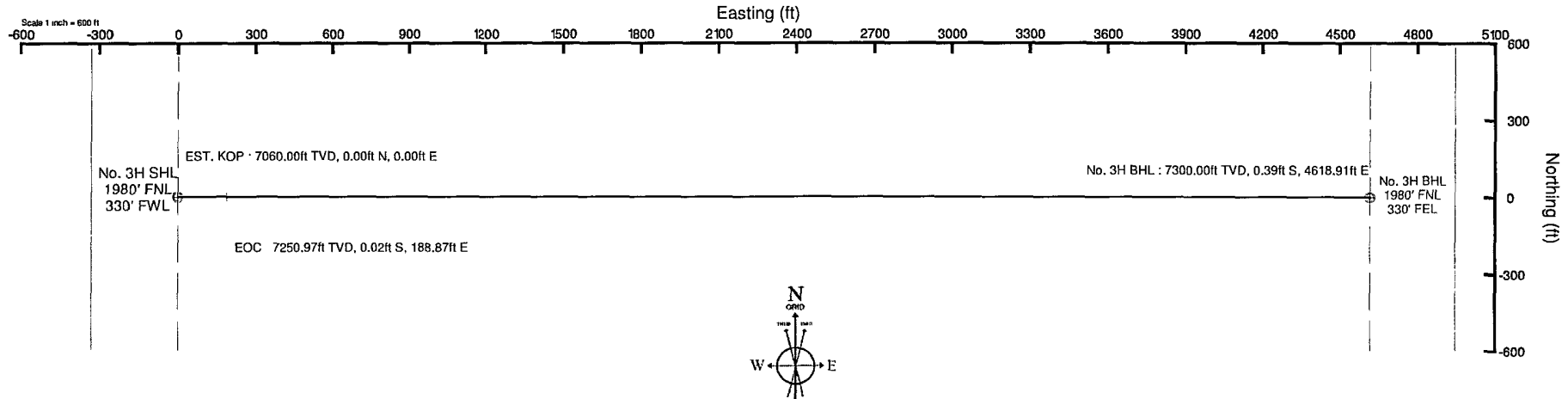
Location: Eddy County, NM
 Field: (Blasting) SEC. 13, T16S, R29E
 Facility: Blasting Cap 13 FED COM No. 3H

Slot: No. 3H SHL
 Well: No. 3H
 Wellbore: No. 3H PWB

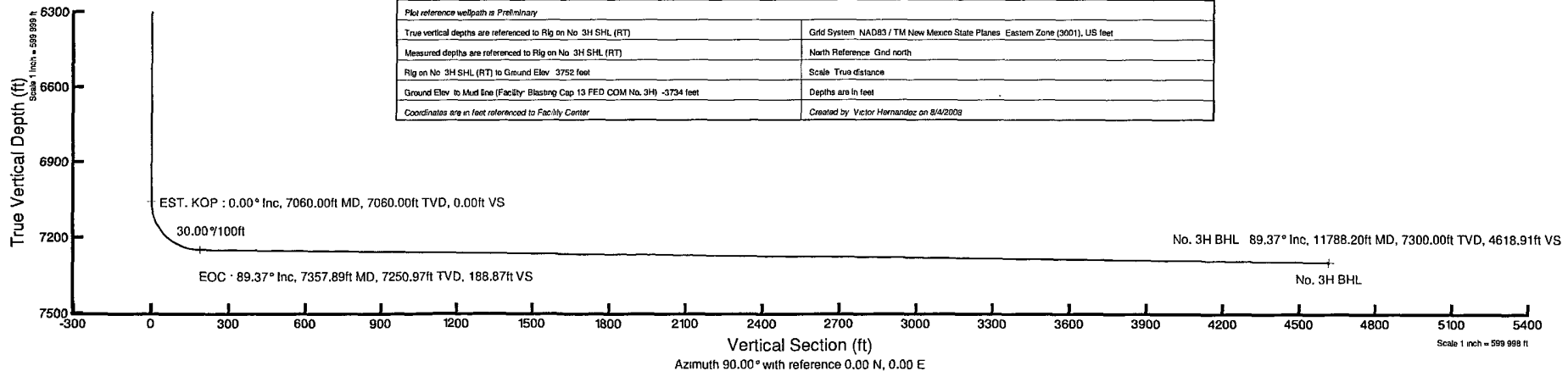


Well Profile Data

Design Comment	MD (ft)	Inc (°)	Az (°)	TVD (ft)	Local N (ft)	Local E (ft)	DLS (%/100ft)	VS (ft)
Tie On	0.00	0.000	90.005	0.00	0.00	0.00	0.00	0.00
EST. KOP	7060.00	0.000	90.005	7060.00	0.00	0.00	0.00	0.00
EOC	7357.89	89.366	90.005	7250.97	-0.02	188.87	30.00	188.87
No. 3H BHL	11788.20	89.366	90.005	7300.00	-0.39	4618.91	0.00	4618.91

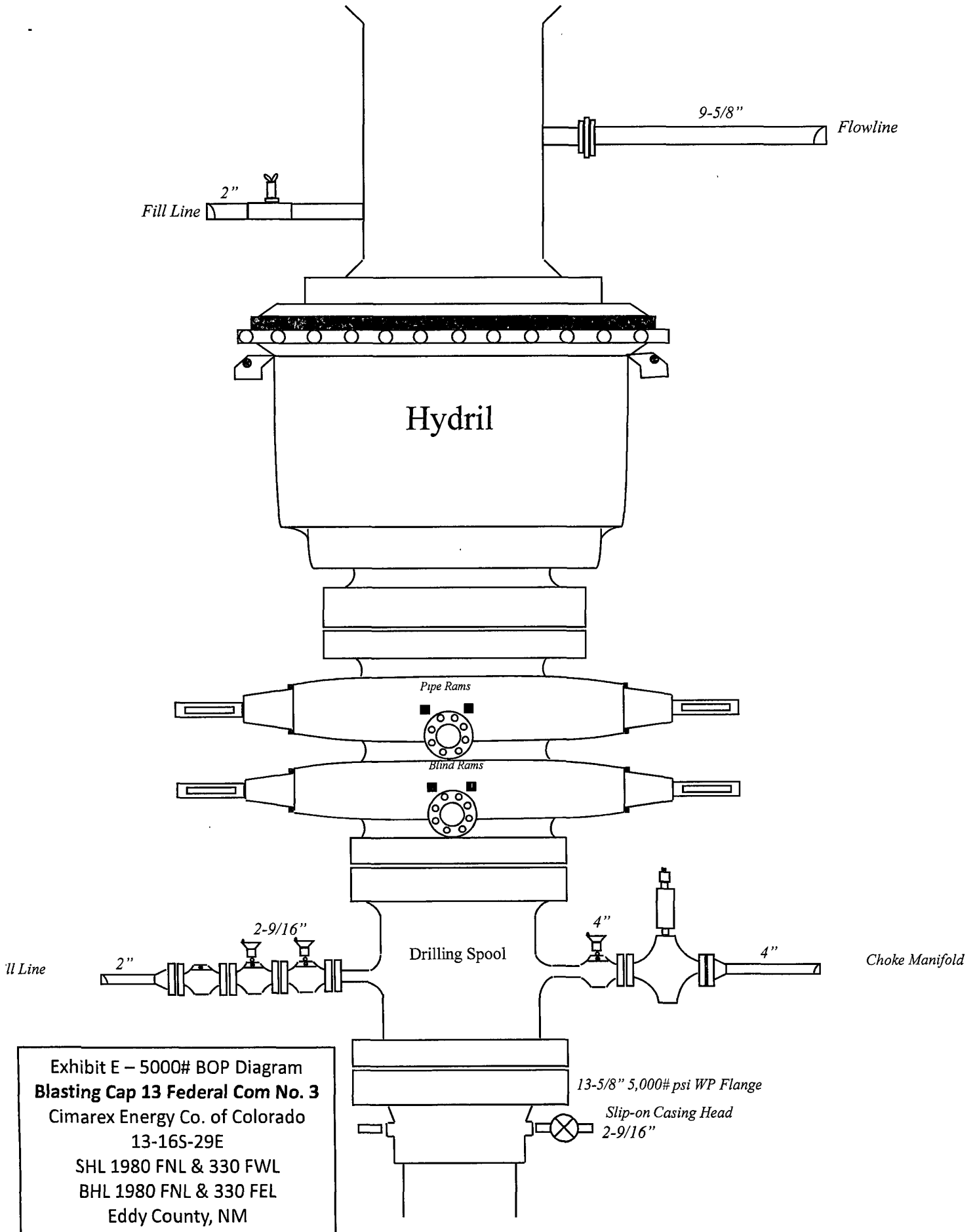


BGGM (1945 0 to 2009 0) Dip 60 83° Field 49291 6 nT
 Magnetic North is 8 24 degrees East of True North (at 8/4/2008)
 Grid North is 0 18 degrees East of True North
 To correct azimuth from True to Grid subtract 0 18 degrees
 To correct azimuth from Magnetic to Grid add 8 08 degrees
 For example if the Magnetic North Azimuth = 90 degs, then the Grid North Azimuth = 90 + 8 08 = 98 08



Plot reference wellpath is Preliminary	
True vertical depths are referenced to Rig on No. 3H SHL (RT)	Grid System NAD83 / TM New Mexico State Planes Eastern Zone (3001), US feet
Measured depths are referenced to Rig on No. 3H SHL (RT)	North Reference Grid north
Rig on No. 3H SHL (RT) to Ground Elev 3752 feet	Scale True distance
Ground Elev to Mud line (Facility Blasting Cap 13 FED COM No. 3H) -3734 feet	Depths are in feet
Coordinates are in feet referenced to Facility Center	Created by Victor Hernandez on 8/4/2008

SR & A



**DRILLING OPERATIONS
CHOKES MANIFOLD
SM SERVICE**

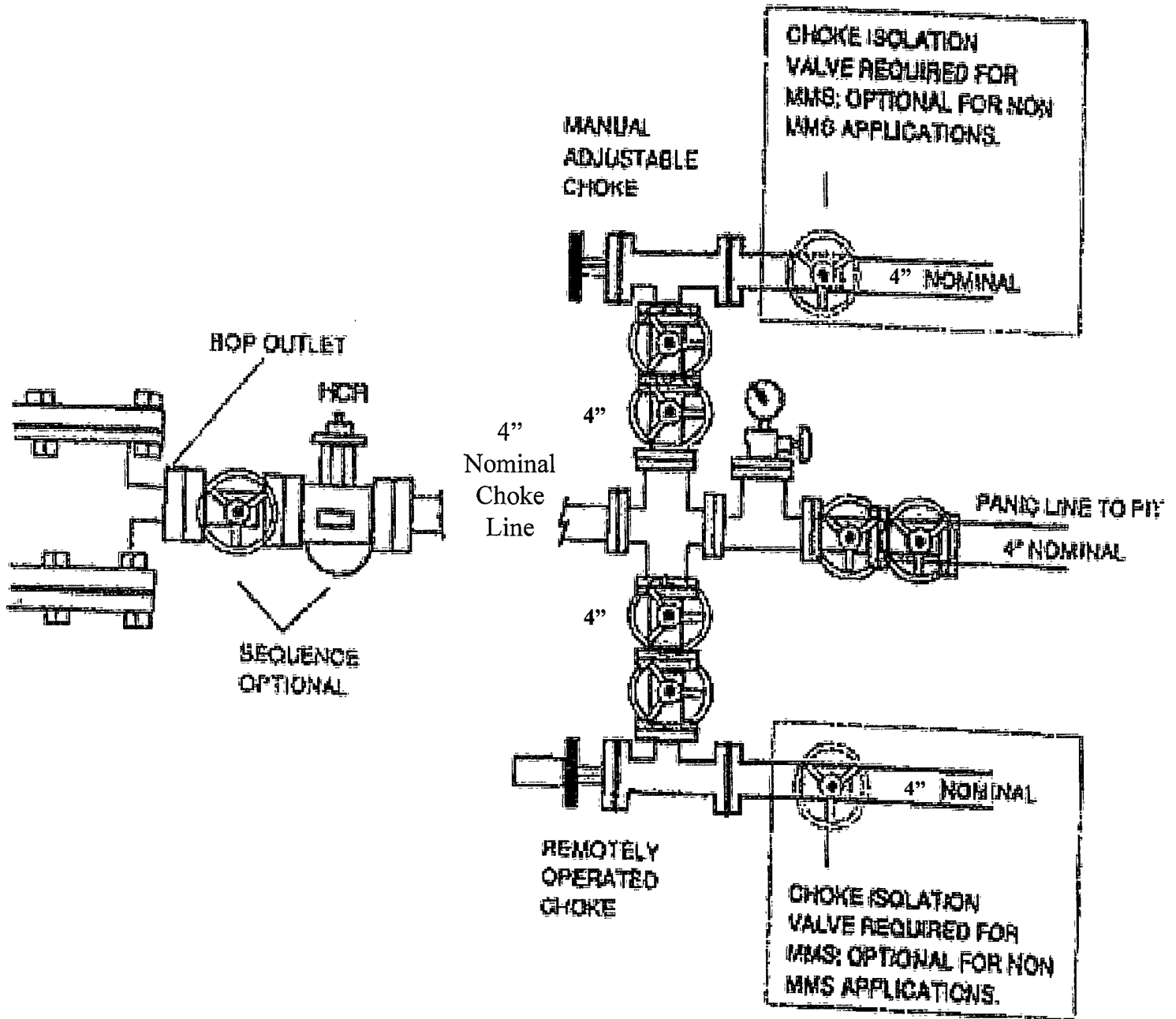


Exhibit E-1 – Choke Manifold Diagram
Blasting Cap 13 Federal Com No. 3
 Cimarex Energy Co. of Colorado
 13-16S-29E
 SHL 1980 FNL & 330 FWL
 BHL 1980 FNL & 330 FEL
 Eddy County, NM

Hydrogen Sulfide Drilling Operations Plan
Blasting Cap 13 Federal Com No. 2
Cimarex Energy Co. of Colorado
Unit E, Section 13
T16S R29E, Eddy County, NM

- 1 All Company and Contract personnel admitted on location must be trained by a qualified H₂S safety instructor to the following:
 - A. Characteristics of H₂S
 - B. Physical effects and hazards
 - C. Proper use of safety equipment and life support systems.
 - D. Principle and operation of H₂S detectors, warning system and briefing areas.
 - E. Evacuation procedure, routes and first aid.
 - F. Proper use of 30 minute pressure demand air pack.

- 2 H₂S Detection and Alarm Systems:
 - A. H₂S detectors and audio alarm system to be located at bell nipple, end of flow line (mud pit) and on derrick floor or doghouse.

- 3 Windsock and/or wind streamers:
 - A. Windsock at mudpit area should be high enough to be visible.
 - B. Windsock at briefing area should be high enough to be visible.

- 4 Condition Flags and Signs:
 - A. Warning sign on access road to location.
 - B. Flags to be displayed on sign at entrance to location. Green flag indicates normal safe condition. Yellow flag indicates potential pressure and danger. Red flag indicates danger (H₂S present in dangerous concentration). Only emergency personnel admitted to location.

- 5 Well control equipment:
 - A. See exhibit "E."

- 6 Communication:
 - A. While working under masks chalkboards will be used for communication.
 - B. Hand signals will be used where chalk board is inappropriate.
 - C. Two way radio will be used to communicate off location in case of emergency help is required. In most cases cellular telephones will be available at most drilling foreman's trailer or living quarters.

- 7 Drillstem Testing:

No DSTs or cores are planned at this time.

- 8 Drilling contractor supervisor will be required to be familiar with the effects H₂S has on tubular goods and other mechanical equipment.

- 9 If H₂S is encountered, mud system will be altered if necessary to maintain control of formation. A mud gas separator will be brought into service along with H₂S scavengers if necessary.

H₂S Contingency Plan
Blasting Cap 13 Federal Com No. 2
Cimarex Energy Co. of Colorado
Unit E, Section 13
T16S R29E, Eddy County, NM

Emergency Procedures

In the event of a release of gas containing H₂S, the first responder(s) must:

- ★ Isolate the area and prevent entry by other persons into the 100 ppm ROE.
- ★ Evacuate any public places encompassed by the 100 ppm ROE.
- ★ Be equipped with H₂S monitors and air packs in order to control the release.
- ★ Use the "buddy system" to ensure no injuries occur during the response.
- ★ Take precautions to avoid personal injury during this operation.
- ★ Contact operator and/or local officials to aid in operation. See list of phone numbers attached.
- ★ Have received training in the:
 - ◆ Detection of H₂S, and
 - ◆ Measures for protection against the gas,
 - ◆ Equipment used for protection and emergency response.

Ignition of Gas Source

Should control of the well be considered lost and ignition considered, take care to protect against exposure to Sulfur Dioxide (SO₂). Intentional ignition must be coordinated with the NMOCD and local officials. Additionally, the NM State Police may become involved. NM State Police shall be the Incident Command on scene of any major release. Take care to protect downwind whenever there is an ignition of the gas.

Characteristics of H₂S and SO₂

Common Name	Chemical Formula	Specific Gravity	Threshold Limit	Hazardous Limit	Lethal Concentration
Hydrogen Sulfide	H ₂ S	1.189 Air=1	10 ppm	100 ppm/hr	600 ppm
Sulfur Dioxide	SO ₂	2.21 Air=1	2 ppm	N/A	1000 ppm

Contacting Authorities

Cimarex Energy Co. of Colorado's personnel must liaise with local and state agencies to ensure a proper response to a major release. Additionally, the OCD must be notified of the release as soon as possible but no later than 4 hours. Agencies will ask for information such as type and volume of release, wind direction, location of release, etc. Be prepared with all information available including directions to site. The following call list of essential and potential responders has been prepared for use during a release. Cimarex Energy Co. of Colorado's response must be in coordination with the State of New Mexico's "Hazardous Materials Emergency Response Plan" (HMER).

H₂S Contingency Plan Emergency Contacts

Blasting Cap 13 Federal Com No. 2

Cimarex Energy Co. of Colorado

Unit E, Section 13

T16S R29E, Eddy County, NM

Company Office

Cimarex Energy Co. of Colorado	800-969-4789
Co. Office and After-Hours Menu	

Key Personnel

Name	Title	Office	Mobile
Doug Park	Drilling Manager	972-443-6463	972-333-1407
Dee Smith	Drilling Super	972-443-6491	972-882-1010
Jim Evans	Drilling Super	972-443-6451	972-465-6564
Dorsey Rogers	Field Super		575-200-6105
Roy Shirley	Field Super		432-634-2136

Artesia

Ambulance	911
State Police	575-746-2703
City Police	575-746-2703
Sheriff's Office	575-746-9888
Fire Department	575-746-2701
Local Emergency Planning Committee	575-746-2122
New Mexico Oil Conservation Division	575-748-1283

Carlsbad

Ambulance	911
State Police	575-885-3137
City Police	575-885-2111
Sheriff's Office	575-887-7551
Fire Department	575-887-3798
Local Emergency Planning Committee	575-887-6544
US Bureau of Land Management	575-887-6544

Santa Fe

New Mexico Emergency Response Commission (Santa Fe)	505-476-9600
New Mexico Emergency Response Commission (Santa Fe) 24 Hrs	505-827-9126
New Mexico State Emergency Operations Center	505-476-9635

National

National Emergency Response Center (Washington, D.C.)	800-424-8802
---	--------------

Medical

Flight for Life - 4000 24th St.; Lubbock, TX	806-743-9911
Aerocare - R3, Box 49F; Lubbock, TX	806-747-8923
Med Flight Air Amb - 2301 Yale Blvd S.E., #D3; Albuquerque, NM	505-842-4433
SB Air Med Service - 2505 Clark Carr Loop S.E.; Albuquerque, NM	505-842-4949

Other

Boots & Coots IWC	800-256-9688	or	281-931-8884
Cudd Pressure Control	432-699-0139	or	432-563-3356
Halliburton	575-746-2757		
B.J. Services	575-746-3569		

Surface Use Plan
Blasting Cap 13 Federal Com No. 2
Cimarex Energy Co. of Colorado
Unit E, Section 13
T16S R29E, Eddy County, NM

- 1 Existing Roads: Area maps, Exhibit "B" is a reproduction of Eddy Co. General Highway Map. Exhibit "C" is a reproduction of a USGS Topographic Map, showing existing roads and proposed roads. All existing roads will be maintained in a condition equal to or better than current conditions. Any new roads will be constructed to BLM specifications.
 - A. Exhibit "A" shows the proposed well site as staked.
 - B. From Loco Hills, go North on Co Rd 217 for 7.5 miles to lease road. On lease road, go Westerly for 3.4 miles to lease road. On lease road, go Southerly 0.2 miles to lease road. On lease road, go Easterly 0.1 miles to proposed lease road.

- 2 Planned Access Roads: 37.4' of new on-lease access road is proposed.

- 3 Location od Existing Wells in a One-Mile Radius - Exhibit A
 - A. Water wells - None known

 - B. Disposal wells - None known

 - C. Drilling wells - None known

 - D. Producing wells - As shown on Exhibit "A"

 - E. Abandoned wells - As shown on Exhibit "A"

Surface Use Plan
Blasting Cap 13 Federal Com No. 2
Cimarex Energy Co. of Colorado
Unit E, Section 13
T16S R29E, Eddy County, NM

- 4 If on completion this well is a producer, Cimarex Energy Co. of Colorado will furnish maps and/or plats showing on site facilities or off site facilities if needed. This will be accompanied by a Sundry Notice.

- 5 Location and Type of Water Supply:
Water will be purchased locally from a commercial source and trucked over the access roads or piped in flexible lines laid on top of the ground.

- 6 Source of Construction Material:
If possible, construction will be obtained from the excavation of drill site. If additional material is needed, it will be purchased from a local source and transported over the access route as shown on Exhibit "C".

- 7 Methods of Handling Waste Material:
 - A. Drill cuttings will be separated by a series of solids removal equipment and stored in steel containment pits and then hauled to a state-approved disposal facility.
 - B. All trash, junk and other waste material will be contained in trash cages or bins to prevent scattering. When the job is completed all contents will be removed and disposed of in an approved sanitary land fill.
 - C. Salts remaining after completion of well will be picked up by supplier including broken sacks.
 - D. Sewage from living quarters will drain into holding tanks and be cleaned out periodically. A Porta-John will be provided for the rig crews. This equipment will be properly maintained during the drilling operations and removed upon completion of the well.
 - E. Drilling fluids will be contained in steel pits in a closed circulating system. Fluids will be cleaned and reused. Water produced during testing will be contained in the steel pits and disposed of at a state approved disposal facility. Any oil or condensate produced will be stored in test tanks until sold and hauled from the site.

- 8 Ancillary Facilities:
 - A. No camps or airstrips to be constructed.

Surface Use Plan
Blasting Cap 13 Federal Com No. 2
Cimarex Energy Co. of Colorado
Unit E, Section 13
T16S R29E, Eddy County, NM

9 Well Site Layout:

- A. Exhibit "D" shows location and rig layout.
- C. Mud pits in the closed circulating system will be steel pits and the cuttings will be stored in steel containment pits.
- D. Cuttings will be stored in steel pits until they are hauled to a state-approved disposal facility.
- E. If the well is a producer, those areas of the location not essential to production facilities will be reclaimed and seeded per BLM requirements.

10 Plans for Restoration of Surface:

Rehabilitation of the location will start in a timely manner after all drilling operations cease. The type of reclamation will depend on whether the well is a producer or a dry hole.

Drainage systems, if any, will be reshaped to the original configuration with provisions made to alleviate erosion. These may need to be modified in certain circumstances to prevent inundation of the location's pad and surface facilities. After the area has been shaped and contoured, topsoil from the spoil pile will be placed over the disturbed area to the extent possible. Revegetation procedures will comply with BLM standards.

If the well is a dry hole, the pad and road area will be recountoured to match the existing terrain. Topsoil will be spread to the extent possible. Revegetation will comply with BLM standards.

Should the well be a producer, the previously noted procedures will apply to those areas which are not required for production facilities.

11 Other Information

- A. Topography consists of a sloping plane with loose tan sands. Vegetation is mainly yucca, mesquite and shin oak.
- B. The wellsite is on surface owned by Department of the Interior, Bureau of Land Management. The land is used mainly for farming, cattle ranching, recreational use, and oil and gas production.
- C. An Archaeological survey will be conducted on the location and proposed roads, and this report will be filed with the Bureau of Land Management in the Carlsbad BLM office.
- D. There are no know dwellings within 1½ miles of this location.

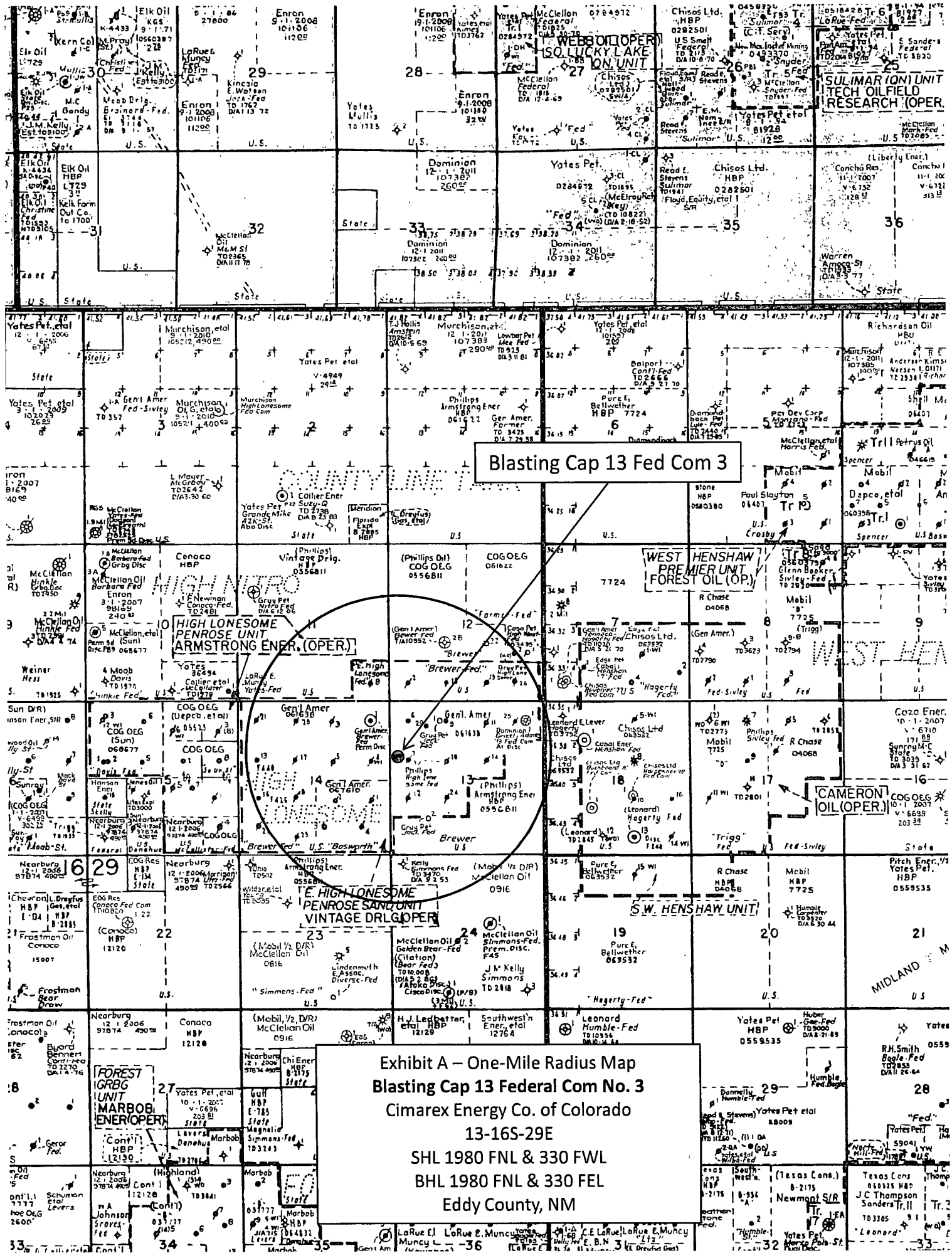
Operator Certification Statement
Blasting Cap 13 Federal Com No. 2
Cimarex Energy Co. of Colorado
Unit E, Section 13
T16S R29E, Eddy County, NM

Operator's Representative

Cimarex Energy Co. of Colorado
P.O. Box 140907
Irving, TX 75014
Office Phone: (972) 443-6489
Zeno Farris

CERTIFICATION: I hereby certify that the statements and plans made in this APD are, to the best of my knowledge, true and correct; and that the work associated with the operations proposed herein will be performed by Cimarex Energy Co. of Colorado and/or its contractors/subcontractors and is in conformity with this plan and the terms and conditions under which it is approved. This statement is subject to the provision of U.S.C. 1001 for the filing of a false statement.

NAME: Natalie Krueger
Natalie Krueger
DATE: October 2, 2008
TITLE: Regulatory Analyst



Blasting Cap 13 Fed Com 3

WEST HENSHAW
PREMIER UNIT
FOREST OIL (OP.)

HIGH LONESOME
PENROSE UNIT
ARMSTRONG ENER. (OPER.)

CAMERON
OIL (OPER.)

HIGH LONESOME
PENROSE SAND UNIT
VINTAGE DRILG OPER

S.W. HENSHAW UNIT

FOREST
GRBG
UNIT
MARBOD
ENERI (OPER.)

Exhibit A – One-Mile Radius Map
Blasting Cap 13 Federal Com No. 3
Cimarex Energy Co. of Colorado
13-16S-29E
SHL 1980 FNL & 330 FWL
BHL 1980 FNL & 330 FEL
Eddy County, NM

R.H. Smith
Boyle Fed
TD 2845
DA 12-26-64

Yates Pet et al
HBP
TD 8009
DA 10-27-61

Yates Pet et al
HBP
TD 8009
DA 10-27-61

Yates Pet et al
HBP
TD 8009
DA 10-27-61

Yates Pet et al
HBP
TD 8009
DA 10-27-61

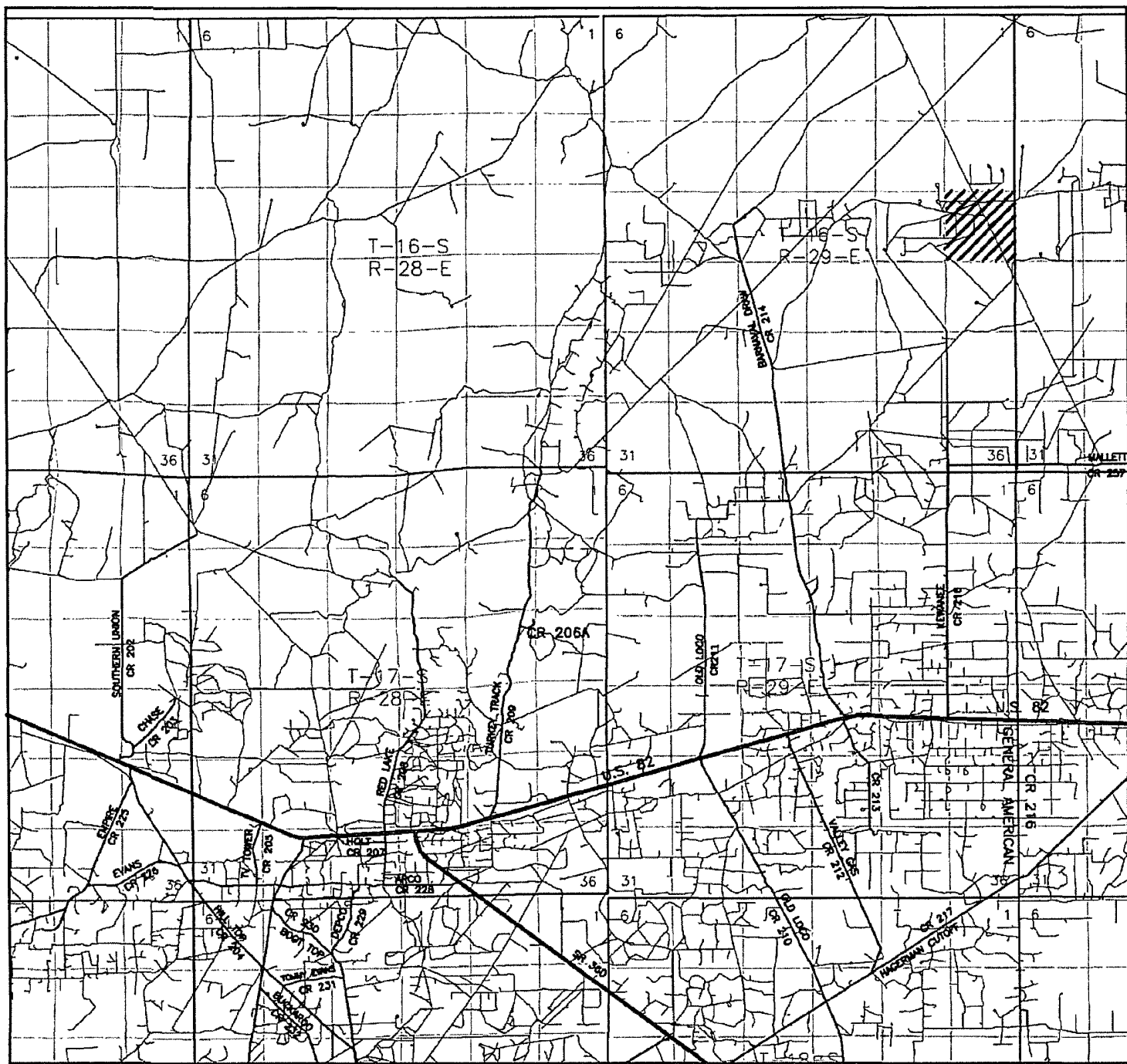
Yates Pet et al
HBP
TD 8009
DA 10-27-61

Yates Pet et al
HBP
TD 8009
DA 10-27-61

Yates Pet et al
HBP
TD 8009
DA 10-27-61

Yates Pet et al
HBP
TD 8009
DA 10-27-61

Yates Pet et al
HBP
TD 8009
DA 10-27-61



BLASTING CAP 13" FEDERAL COM #3
 Located 1980' FNL and 330' FWL
 Section 13, Township 16 South, Range 29 East,
 N.M.P.M., Eddy County, New Mexico.

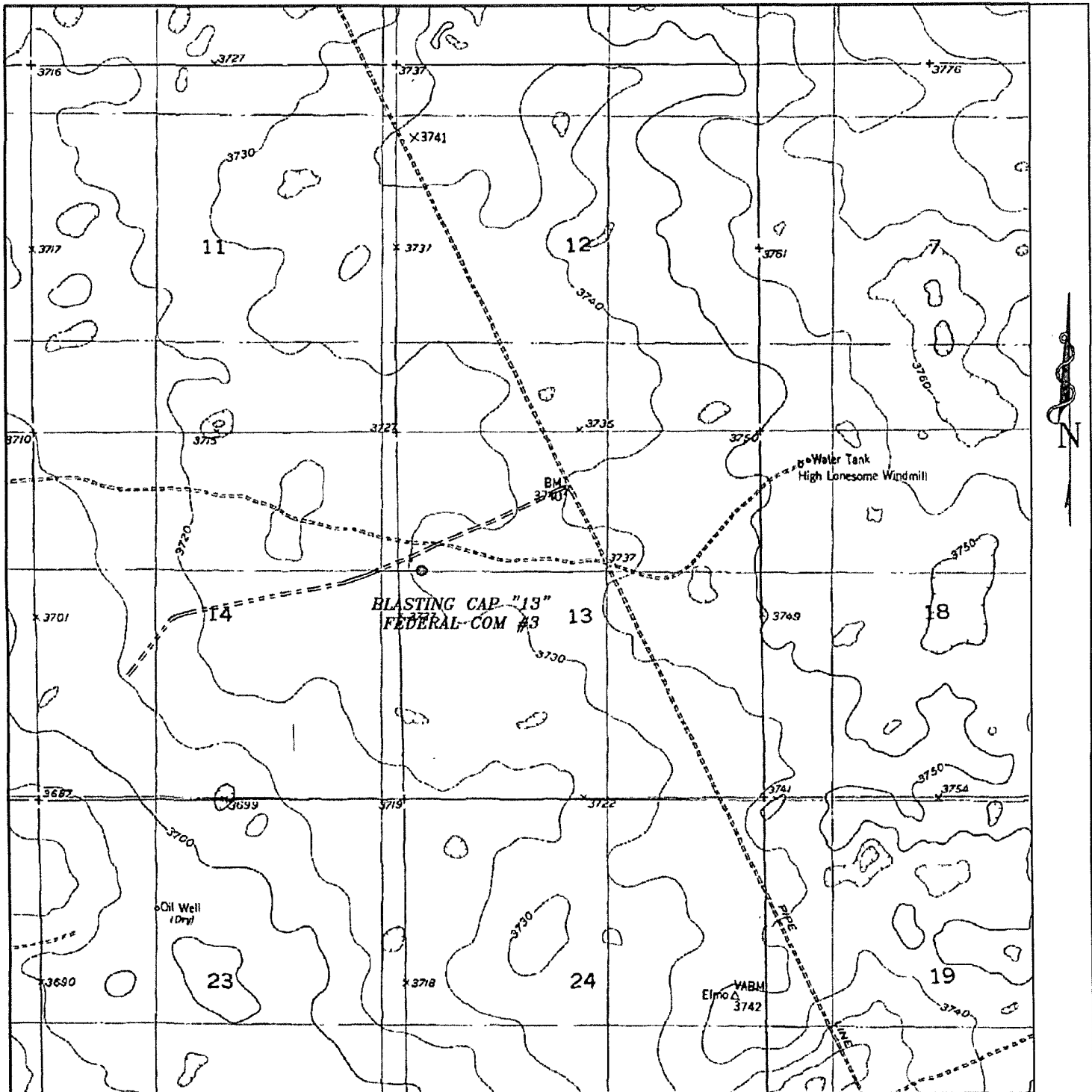
basin surveys
 focused on excellence in the oilfield

P.O. Box 1786
 1120 N. West County Rd.
 Hobbs, New Mexico 88241
 (505) 393-7316 - Office
 (505) 392-3074 - Fax
 basinsurveys.com

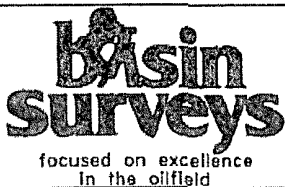
W.O. Number:	JMS 19570
Survey Date:	04-25-2008
Scale:	1" = 2 MILES
Date:	05-02-2008

CIMAREX ENERGY CO. OF COLORADO

Exhibit B



BLASTING CAP "13" FEDERAL COM #3
 Located 1980' FNL and 330' FWL
 Section 13, Township 16 South, Range 29 East,
 N.M.P.M., Eddy County, New Mexico.



P.O. Box 1786
 1120 N. West County Rd.
 Hobbs, New Mexico 88241
 (505) 393-7316 - Office
 (505) 392-3074 - Fax
 basinsurveys.com

W.O. Number. JMS 19570

Survey Date: 04-25-2008

Scale: 1" = 2000'

Date: 05-02-2008

CIMAREX
ENERGY CO.
OF COLORADO

Exhibit C

Patterson Rig 75

Cimarex Energy Co. of Colorado

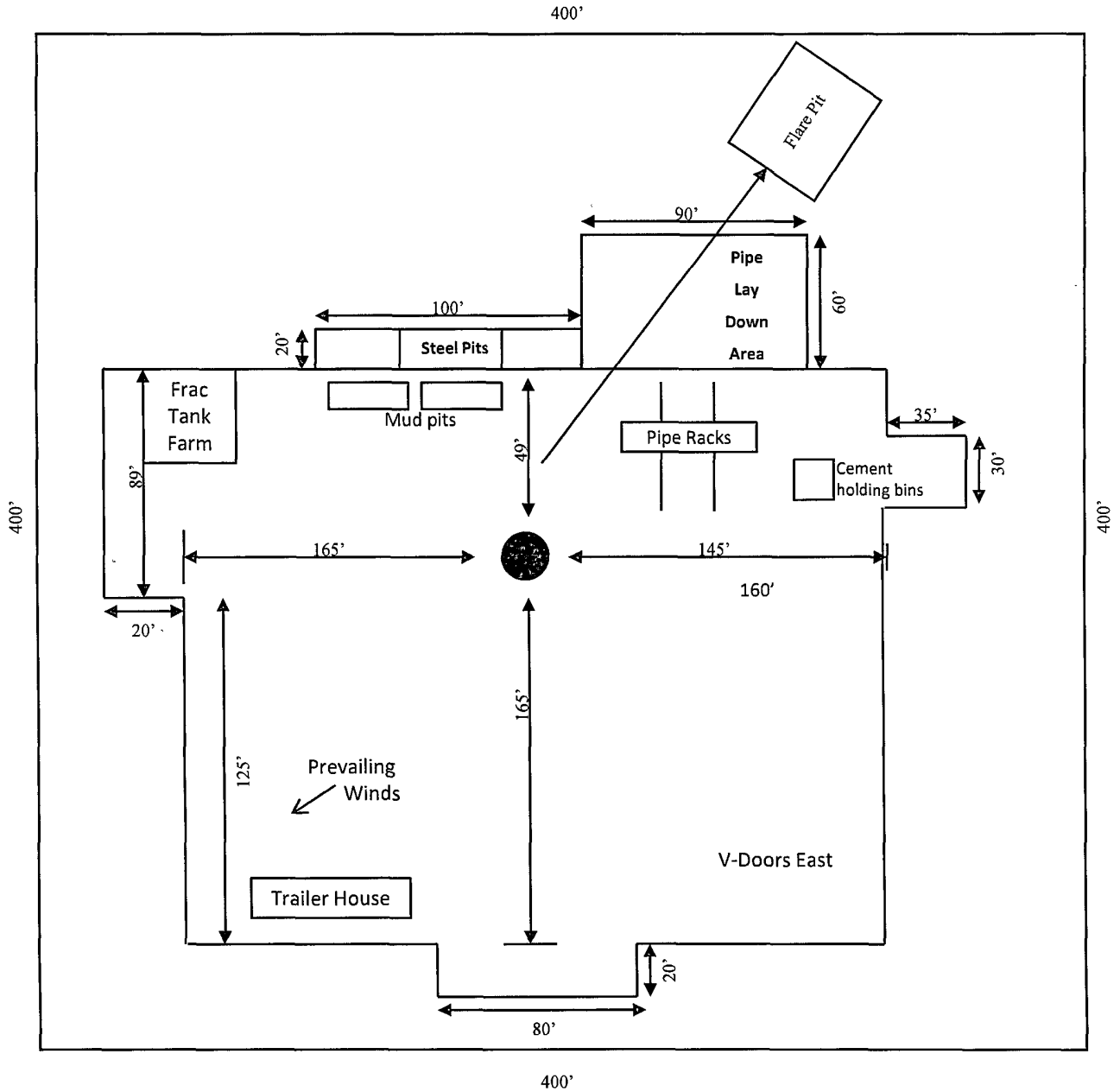


Exhibit D – Rig Layout
Blasting Cap 13 Federal Com No. 3
Cimarex Energy Co. of Colorado
13-16S-29E
SHL 1980 FNL & 330 FWL
BHL 1980 FNL & 330 FEL
Eddy County, NM

PECOS DISTRICT CONDITIONS OF APPROVAL

OPERATOR'S NAME:	Cimarex Energy Co of Colorado
LEASE NO.:	NM0556811
WELL NAME & NO.:	Blasting Cap 13 Fed Com No 3
SURFACE HOLE FOOTAGE:	1980' FNL & 330' FWL
BOTTOM HOLE FOOTAGE:	1980' FNL & 330' FEL
LOCATION:	Section 13, T. 16 S., R 29 E., NMPM
COUNTY:	Eddy County, New Mexico

TABLE OF CONTENTS

Standard Conditions of Approval (COA) apply to this APD. If any deviations to these standards exist or special COAs are required, the section with the deviation or requirement will be checked below.

- General Provisions**
- Permit Expiration**
- Archaeology, Paleontology, and Historical Sites**
- Noxious Weeds**
- Special Requirements**
 - Communitization Agreement
- Construction**
 - Notification
 - Topsoil
 - Closed Loop System
 - Federal Mineral Material Pits
 - Well Pads
 - Roads
- Road Section Diagram**
- Drilling**
- Production (Post Drilling)**
 - Well Structures & Facilities
 - Pipelines
 - Electric Lines
- Reseeding Procedure/Interim Reclamation**
- Final Abandonment/Reclamation**

I. GENERAL PROVISIONS

The approval of the Application For Permit To Drill (APD) is in compliance with all applicable laws and regulations: 43 Code of Federal Regulations 3160, the lease terms, Onshore Oil and Gas Orders, Notices To Lessees, New Mexico Oil Conservation Division (NMOCD) Rules, National Historical Preservation Act As Amended, and instructions and orders of the Authorized Officer. Any request for a variance shall be submitted to the Authorized Officer on Form 3160-5, Sundry Notices and Report on Wells.

II. PERMIT EXPIRATION

If the permit terminates prior to drilling and drilling cannot be commenced within 60 days after expiration, an operator is required to submit Form 3160-5, Sundry Notices and Reports on Wells, requesting surface reclamation requirements for any surface disturbance. However, if the operator will be able to initiate drilling within 60 days after the expiration of the permit, the operator must have set the conductor pipe in order to allow for an extension of 60 days beyond the expiration date of the APD. (Filing of a Sundry Notice is required for this 60 day extension.)

III. ARCHAEOLOGICAL, PALEONTOLOGY & HISTORICAL SITES

Any cultural and/or paleontological resource discovered by the operator or by any person working on the operator's behalf shall immediately report such findings to the Authorized Officer. The operator is fully accountable for the actions of their contractors and subcontractors. The operator shall suspend all operations in the immediate area of such discovery until written authorization to proceed is issued by the Authorized Officer. An evaluation of the discovery shall be made by the Authorized Officer to determine the appropriate actions that shall be required to prevent the loss of significant cultural or scientific values of the discovery. The operator shall be held responsible for the cost of the proper mitigation measures that the Authorized Officer assesses after consultation with the operator on the evaluation and decisions of the discovery. Any unauthorized collection or disturbance of cultural or paleontological resources may result in a shutdown order by the Authorized Officer.

IV. NOXIOUS WEEDS

The operator shall be held responsible if noxious weeds become established within the areas of operations. Weed control shall be required on the disturbed land where noxious weeds exist, which includes the roads, pads, associated pipeline corridor, and adjacent land affected by the establishment of weeds due to this action. The operator shall consult with the Authorized Officer for acceptable weed control methods, which include following EPA and BLM requirements and policies.

V. SPECIAL REQUIREMENT(S)

Communitization Agreement

A Communitization Agreement covering the acreage dedicated to this well must be filed for approval with the BLM. The effective date of the agreement shall be prior to any sales.

VI. CONSTRUCTION

A. NOTIFICATION

The BLM shall administer compliance and monitor construction of the access road and well pad. Notify the Carlsbad Field Office at (575) 234-5972 at least 3 working days prior to commencing construction of the access road and/or well pad.

When construction operations are being conducted on this well, the operator shall have the approved APD and Conditions of Approval (COA) on the well site and they shall be made available upon request by the Authorized Officer.

B. TOPSOIL

The operator shall stockpile the topsoil of the well pad. The topsoil to be stripped is approximately 6 inches in depth. The topsoil shall not be used to backfill the reserve pit and will be used for interim and final reclamation.

C. CLOSED LOOP SYSTEM

Although this is a closed loop system and no reserve pits will be utilized, the v-door will be to the East

Tanks are required for drilling operations: No Pits.

The operator shall properly dispose of drilling contents at an authorized disposal site.

D. FEDERAL MINERAL MATERIALS PIT

If the operator elects to surface the access road and/or well pad, mineral materials extracted during construction of the reserve pit may be used for surfacing the well pad and access road and other facilities on the lease.

Payment shall be made to the BLM prior to removal of any additional federal mineral materials from any site other than the reserve pit. Call the Carlsbad Field Office at (575) 234-5972.

E. WELL PAD SURFACING

Surfacing of the well pad is not required.

If the operator elects to surface the well pad, the surfacing material may be required to be removed at the time of reclamation.

The well pad shall be constructed in a manner which creates the smallest possible surface disturbance, consistent with safety and operational needs.

F. ON LEASE ACCESS ROADS

Road Width

The access road shall have a driving surface that creates the smallest possible surface disturbance and does not exceed fourteen (14) feet in width. The maximum width of surface disturbance, when constructing the access road, shall not exceed thirty (30) feet.

Surfacing

Surfacing material is not required on the new access road driving surface. If the operator elects to surface the new access road or pad, the surfacing material may be required to be removed at the time of reclamation.

Where possible, no improvements should be made on the unsurfaced access road other than to remove vegetation as necessary, road irregularities, safety issues, or to fill low areas that may sustain standing water.

The Authorized Officer reserves the right to require surfacing of any portion of the access road at any time deemed necessary. Surfacing may be required in the event the road deteriorates, erodes, road traffic increases, or it is determined to be beneficial for future field development. The surfacing depth and type of material will be determined at the time of notification.

Crowning

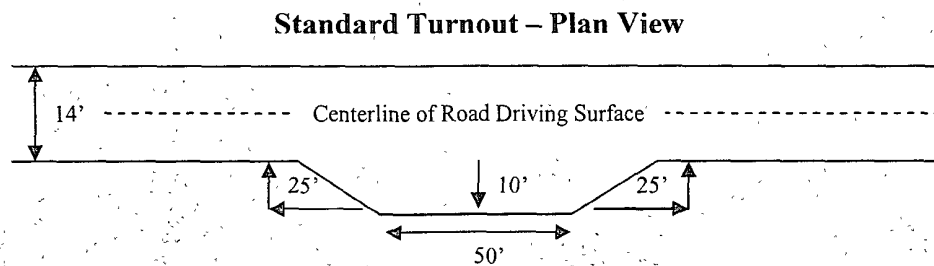
Crowning shall be done on the access road driving surface. The road crown shall have a grade of approximately 2% (i.e., a 1" crown on a 14' wide road). The road shall conform to Figure 1; cross section and plans for typical road construction.

Ditching

Ditching shall be required on both sides of the road.

Turnouts

Vehicle turnouts shall be constructed on the road. Turnouts shall be intervisible with interval spacing distance less than 1000 feet. Turnouts shall be constructed on all blind curves. Turnouts shall conform to the following diagram:

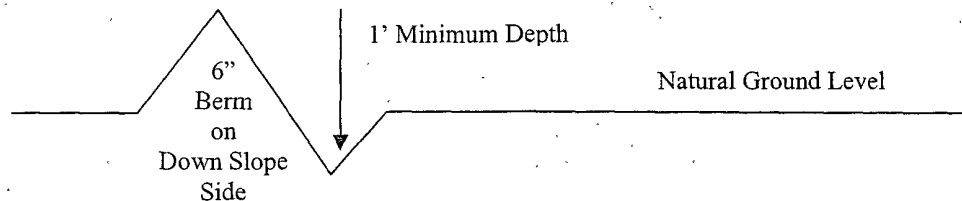


Drainage

Drainage control systems shall be constructed on the entire length of road (e.g. ditches, sidehill out-sloping and in-sloping, lead-off ditches, culvert installation, and low water crossings).

A typical lead-off ditch has a minimum depth of 1 foot below and a berm of 6 inches above natural ground level. The berm shall be on the down-slope side of the lead-off ditch.

Cross Section of a Typical Lead-off Ditch



All lead-off ditches shall be graded to drain water with a 1 percent minimum to 3 percent maximum ditch slope. The spacing interval are variable for lead-off ditches and shall be determined according to the formula for spacing intervals of lead-off ditches, but may be amended depending upon existing soil types and centerline road slope (in %);

Formula for Spacing Interval of Lead-off Ditches

Example - On a 4% road slope that is 400 feet long, the water flow shall drain water into a lead-off ditch. Spacing interval shall be determined by the following formula:

$$400 \text{ foot road with } 4\% \text{ road slope: } \frac{400'}{4\%} + 100' = 200' \text{ lead-off ditch interval}$$

Culvert Installations

Appropriately sized culvert(s) shall be installed at the deep waterway channel flow crossing.

Cattleguards

An appropriately sized cattleguard(s) sufficient to carry out the project shall be installed and maintained at fence crossing(s).

Any existing cattleguard(s) on the access road shall be repaired or replaced if they are damaged or have deteriorated beyond practical use. The operator shall be responsible for the condition of the existing cattleguard(s) that are in place and are utilized during lease operations.

A gate shall be constructed and fastened securely to H-braces.

Fence Requirement

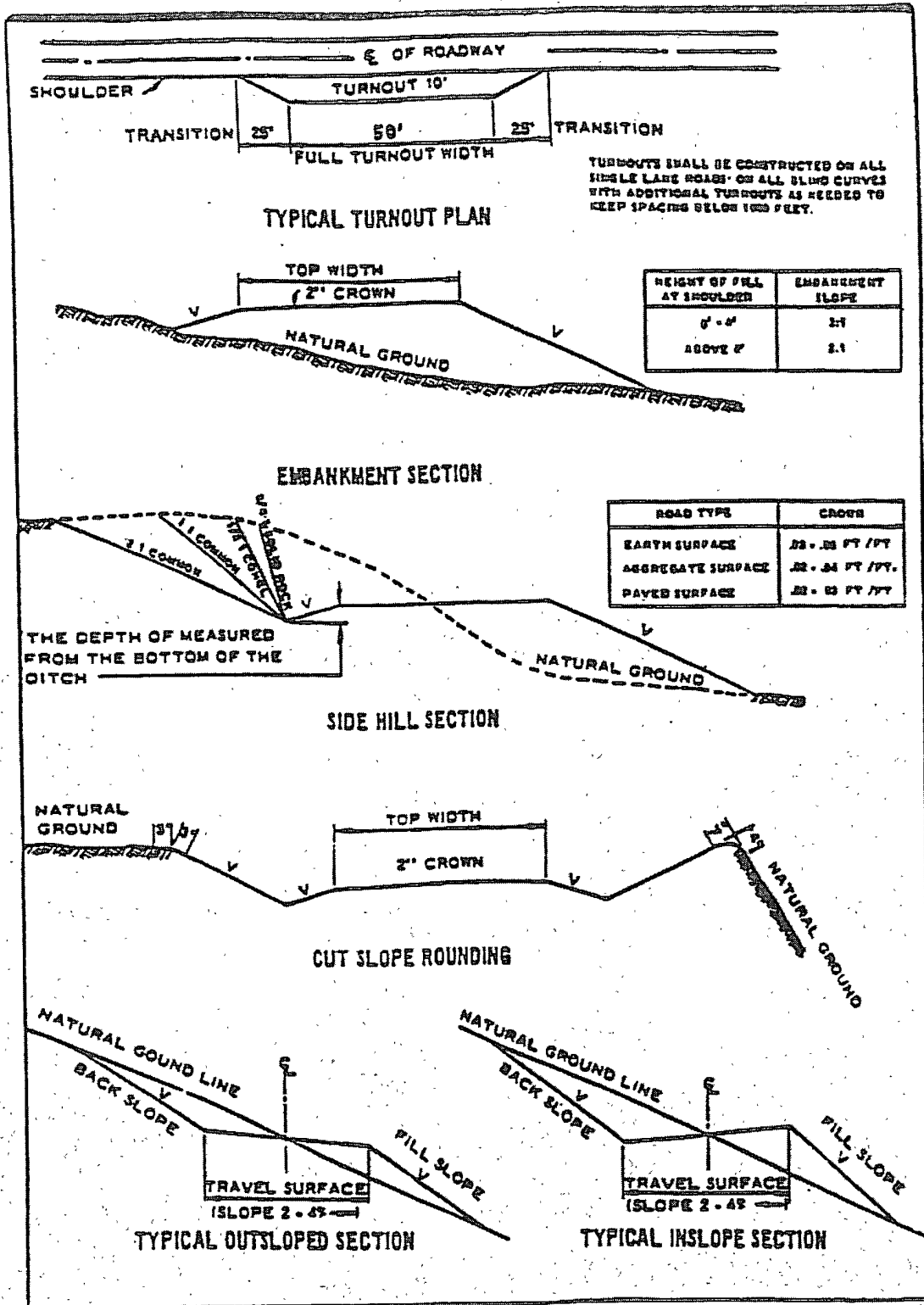
Where entry is required across a fence line, the fence shall be braced and tied off on both sides of the passageway prior to cutting.

The operator shall notify the private surface landowner or the grazing allotment holder prior to crossing any fence(s).

Public Access

Public access on this road shall not be restricted by the operator without specific written approval granted by the Authorized Officer.

Figure 1 - Cross Sections and Plans For Typical Road Sections



VII. DRILLING

A. DRILLING OPERATIONS REQUIREMENTS

The BLM is to be notified a minimum of 4 hours in advance for a representative to witness:

- a. Spudding well
- b. Setting and/or Cementing of all casing strings
- c. BOPE tests

Eddy County

Call the Carlsbad Field Office, 620 East Greene St., Carlsbad, NM 88220,
(575) 361-2822

1. **Although Hydrogen Sulfide has not been reported in this section, it is always a possible hazard. If Hydrogen Sulfide is encountered, please report measured amounts and formations to the BLM.**
2. Unless the production casing has been run and cemented or the well has been properly plugged, the drilling rig shall not be removed from over the hole without prior approval.
3. Floor controls are required for 3M or Greater systems. These controls will be on the rig floor, unobstructed, readily accessible to the driller and will be operational at all times during drilling and/or completion activities. Rig floor is defined as the area immediately around the rotary table; the area immediately above the substructure on which the draw works are located, this does not include the dog house or stairway area.

B. CASING

Changes to the approved APD casing and cement program require submitting a sundry and receiving approval prior to work. Failure to obtain approval prior to work will result in an Incident of Non-Compliance being issued.

Centralizers required on surface casing per Onshore Order 2.III.B.1.f.

Wait on cement (WOC) time for a primary cement job will be a minimum 18 hours for a water basin, 24 hours in the potash area, or 500 pounds compressive strength, whichever is greater for all casing strings. Provide compressive strengths including hours to reach required 500 pounds compressive strength prior to cementing each casing string. See individual casing strings for details regarding lead cement slurry requirements.

No pea gravel permitted for remedial or fall back remedial without prior authorization from the BLM engineer.

Possible debris flows in the Rustler formation

Possible water flows in the Grayburg formation.

Possible lost circulation in the Grayburg and San Andres formations.

Possible high pressure gas bursts from the Wolfcamp formation – applicable to pilot hole.

1. The 13-3/8 inch surface casing shall be set at approximately 450 feet (a minimum of 25 feet into the Rustler Anhydrite and above the salt) and cemented to the surface. **If the salt is penetrated, set casing 25' above the salt. Rustler is in a structural low in this area.**
 - a. If cement does not circulate to the surface, the appropriate BLM office shall be notified and a temperature survey utilizing an electronic type temperature survey with a surface log readout will be used or a cement bond log shall be run to verify the top of the cement.
 - b. Wait on cement (WOC) time for a primary cement job is to include the lead cement slurry.**
 - c. Wait on cement (WOC) time for a remedial job will be a minimum of 4 hours after bringing cement to surface or 500 pounds compressive strength, whichever is greater.
 - d. If cement falls back, a remedial cementing will be done prior to drilling out that string.

2. The minimum required fill of cement behind the 9-5/8 inch intermediate casing is:

Cement to surface. If cement does not circulate see B.1.a, c-d above.

Formation below the 9-5/8" shoe to be tested according to Onshore Order 2.III.B.1.i. Test to be done as a mud equivalency test using the mud weight necessary for the pore pressure of the formation below the shoe (not the mud weight required to prevent dissolving the salt formation) and the mud weight for the bottom of the hole. Report results to BLM office.

3. The minimum required fill of cement behind the 7 inch production casing is:

Cement should tie-back at least 200 feet into previous casing string. Operator shall provide method of verification.

Tag cement at bottom of pilot hole and report on subsequent report. NOTE: Pilot hole will require proper plug when well is plugged.

Formation below the kick off point to be tested according to Onshore Order 2.III.B.1.i. Test to be done as a mud equivalency test using the mud weight necessary for the pore pressure of the formation below the shoe and the mud weight for the bottom of the hole. Report results to BLM office.

4. The minimum required fill of cement behind the 4-1/2 inch production liner is:

Not required as operator is using Peak Iso-Pak liner.

5. If hardband drill pipe is rotated inside casing, returns will be monitored for metal. If metal is found in samples, drill pipe will be pulled and rubber protectors which have a larger diameter than the tool joints of the drill pipe will be installed prior to continuing drilling operations.

C. PRESSURE CONTROL

1. All blowout preventer (BOP) and related equipment (BOPE) shall comply with well control requirements as described in Onshore Oil and Gas Order No. 2 and API RP 53 Sec. 17.

2. The appropriate BLM office shall be notified a minimum of 4 hours in advance for a representative to witness the tests.

a. The tests shall be done by an independent service company.

b. The results of the test shall be reported to the appropriate BLM office.

c. All tests are required to be recorded on a calibrated test chart. A copy of the BOP/BOPE test chart and a copy of independent service company test will be submitted to the appropriate BLM office.

d. The BOP/BOPE test shall include a low pressure test from 250 to 300 psi. The test will be held for a minimum of 10 minutes if test is done with a test plug and 30 minutes without a test plug.

e. **Effective November 1, 2008, no variances will be granted on reduced pressure tests on the surface casing and BOP/BOPE. Onshore Order 2 requirements will be in effect.**

D. DRILL STEM TEST

If drill stem tests are performed, Onshore Order 2.III.D shall be followed.

WWI 110508

VIII. PRODUCTION (POST DRILLING)

A. WELL STRUCTURES & FACILITIES

Placement of Production Facilities

Production facilities should be placed on the well pad to allow for maximum interim recontouring and revegetation of the well location.

Containment Structures

The containment structure shall be constructed to hold the capacity of the entire contents of the largest tank, plus 24 hour production, unless more stringent protective requirements are deemed necessary by the Authorized Officer.

Painting Requirement

All above-ground structures including meter housing that are not subject to safety requirements shall be painted a flat non-reflective paint color Shale Green, Munsell Soil Color Chart # 5Y 4/2

IX. INTERIM RECLAMATION & RESEEDING PROCEDURE

A. INTERIM RECLAMATION

If the well is a producer, interim reclamation shall be conducted on the well site in accordance with the orders of the Authorized Officer. The operator shall submit a Sundry Notices and Reports on Wells (Notice of Intent), Form 3160-5, prior to conducting interim reclamation.

During the life of the development, all disturbed areas not needed for active support of production operations should undergo interim reclamation in order to minimize the environmental impacts of development on other resources and uses.

Operators should work with BLM surface management specialists to devise the best strategies to reduce the size of the location. Any reductions should allow for remedial well operations, as well as safe and efficient removal of oil and gas.

During reclamation, the removal of caliche is important to increasing the success of revegetating the site. Removed caliche may be used for road repairs, fire walls or for building other roads and locations. In order to operate the well or complete workover operations, it may be necessary to drive, park and operate on restored interim vegetation within the previously disturbed area. Disturbing revegetated areas for production or workover operations will be allowed. If there is significant disturbance and loss of vegetation, the area will need to be revegetated. Communicate with the appropriate BLM office for any exceptions/exemptions if needed.

B. RESEEDING PROCEDURE

Once the well has been drilled, the completion procedures accomplished, and all trash removed, reseed the location and all surrounding disturbed areas as follows:

Seed Mixture 2, for Sandy Sites

The holder shall seed all disturbed areas with the seed mixture listed below. The seed mixture shall be planted in the amounts specified in pounds of pure live seed (PLS)* per acre. There shall be no primary or secondary noxious weeds in the seed mixture. Seed will be tested and the viability testing of seed will be done in accordance with State law (s) and within nine (9) months prior to purchase. Commercial seed will be either certified or registered seed. The seed container will be tagged in accordance with State law(s) and available for inspection by the authorized officer.

Seed will be planted using a drill equipped with a depth regulator to ensure proper depth of planting where drilling is possible. The seed mixture will be evenly and uniformly planted over the disturbed area (smaller/heavier seeds have a tendency to drop the bottom of the drill and are planted first). The holder shall take appropriate measures to ensure this does not occur. Where drilling is not possible, seed will be broadcast and the area shall be raked or chained to cover the seed. When broadcasting the seed, the pounds per acre are to be doubled. The seeding will be repeated until a satisfactory stand is established as determined by the authorized officer. Evaluation of growth will not be made before completion of at least one full growing season after seeding.

Species to be planted in pounds of pure live seed* per acre:

<u>Species</u>	<u>lb/acre</u>
Sand dropseed (Sporobolus cryptandrus)	1.0
Sand love grass (Eragrostis trichodes)	1.0
Plains bristlegrass (Setaria macrostachya)	2.0

*Pounds of pure live seed:

Pounds of seed x percent purity x percent germination = pounds pure live seed

X. FINAL ABANDONMENT & REHABILITATION REQUIREMENTS

Upon abandonment of the well and/or when the access road is no longer in service the Authorized Officer shall issue instructions and/or orders for surface reclamation and restoration of all disturbed areas.

On private surface/federal mineral estate land the reclamation procedures on the road and well pad shall be accomplished in accordance with the private surface land owner agreement.