

UNITED STATES
DEPARTMENT OF THE INTERIOR
BUREAU OF LAND MANAGEMENT

FORM APPROVED
OMB No. 1004-0135
Expires July 31, 1996

RECEIVED

MAR 11 2009
OCD-HOBBS

MAR 09 2009
HOBBS

SUNDRY NOTICES AND REPORTS ON WELLS

Do not use this form for proposals to drill or to re-enter an abandoned well. Use form 3160-3 (APD) for such proposals.

SUBMIT IN TRIPLICATE - Other instructions on reverse side

1. Type of Well

☒ Oil Well ☐ Gas Well ☐ Other

2. Name of Operator

Cimarex Energy Co. of Colorado

3a. Address

5215 N. O'Connor Blvd., Ste 1500; Irving, TX 75039

3b. Phone No. (include area code)

972-401-3111

4. Location of Well (Footage, Sec., T., R., M., or Survey Description)

1980 FSL & 660 FEL
5-20S-29E

Lease Serial No.
NM-144698

6. If Indian, Allottee or Tribe Name

7. If Unit or CA/Agreement, Name and/or No.

8. Well Name and No.

Superior Federal No. 4

9. API Well No.

30-015-22395

10. Field and Pool, or Exploratory Area

Winchester; Bone Spring

11. County or Parish, State

Eddy County, NM

12. CHECK APPROPRIATE BOX(ES) TO INDICATE NATURE OF NOTICE, REPORT, OR OTHER DATA

TYPE OF SUBMISSION

TYPE OF ACTION

☒ Notice of Intent

☐ Subsequent Report

☐ Final Abandonment Notice

☐ Acidize

☐ Alter Casing

☐ Casing Repair

☐ Change Plans

☐ Convert to Injection

☐ Deepen

☐ Fracture Treat

☐ New Construction

☐ Plug and Abandon

☒ Plug Back

☐ Production (Start/Resume)

☐ Reclamation

☒ Recomplete

☐ Temporarily Abandon

☐ Water Disposal

☐ Water Shut-Off

☐ Well Integrity

☒ Other Plug back and
recomplete horizontally in
Bone Spring

13. Describe Proposed or Completed Operation (clearly state all pertinent details, included estimated starting date of any proposed work and approximate duration thereof.

If the proposal is to deepen directionally or recomplete horizontally, give subsurface locations and measured and true vertical depths of all pertinent markers and zones. Attach the bond under which the work will be performed or provide the Bond No. on file with BLM/BIA. Required subsequent reports shall be filed within 30 days following completion of the involved operations. If the operation results in a multiple completion or recompletion in a new interval, a Form 3160-4 shall be filed once testing has been completed. Final Abandonment Notices shall be filed only after all requirements, including reclamation, have been completed, and the operator has determined that the site is ready for final inspection.)

Well shut in since 09-03. Open Bone Spring perfs at 5730-50.' Casing leak @ 5780-5814' squeezed w/ ?? sx cmt. CIBP @ 9500' w/ 35' cmt. CIBP @ 10254' w/ 35' cmt over Strawn perfs @ 10304-08' and 10314-18'. CIBP @ 11200' w/ 35' cmt over Morrow perfs @ 11340-50' and 11407-17'.

Cimarex proposes to perform the following operations in order to plug back and recomplete this well horizontally in the Bone Spring:

- Kill well. ND WH & NU 5K BOP. POOH w/ tbg. Set CIBP @ 7769.' Perf squeeze holes in 5 1/2" csg @ 7759' (at proposed KOP). Squeeze w/ 50 sx Class C. Squeeze Bone Spring 5730-50' w/ ?? sx cmt.
 - Squeeze Bone Spring perfs @ 5730-50.' Set CIBP @ 5760.' Squeeze perfs w/ 50 sx Class C. Drill out CIBPs and cement.
 - Set CIBP @ 7771' w/ 2 sx sand.
 - Mill window from 7749' to 7764.' Kick off 6 1/2" hole at 7759.' Land curve at 8059' MD and 7950' TVD and drill to TD of 10845' MD and 7950' TVD.
 - Run 3 1/2" 9.3# P-110 EUE 8rd liner from RSB packer at 7659' to TD at 10845' MD. Liner will be PEAK completion assembly which will require no cement.
 - Fracture treat in several stages as needed through iso-ports separated by iso-packers.
- Please see attached C-102 and preliminary directional survey.

SEE ATTACHED FOR
CONDITIONS OF APPROVAL

14. I hereby certify that the foregoing is true and correct

Name (Printed/Typed)

Natalie Krueger

Signature

Title

Regulatory Analyst

Date

January 28, 2009

THIS SPACE FOR FEDERAL OR STATE OFFICE USE

Approved by

Title

Office

Conditions of Approval, if any, are attached. Approval of this notice does not warrant or certify that the applicant holds legal or equitable title to those rights in the subject lease which would entitle the applicant to conduct operations thereon.

Title 18 U.S.C. Section 1001, makes it a crime for any person knowingly and willfully to make to any department or agency of the United States any false, fictitious or fraudulent statements or representations as to any matter within its jurisdiction

(Instructions on reverse)

APPROVED

MAR 3 2009
Date

WESLEY W. INGRAM
PETROLEUM ENGINEER



Cimarex Energy Co. of Colorado

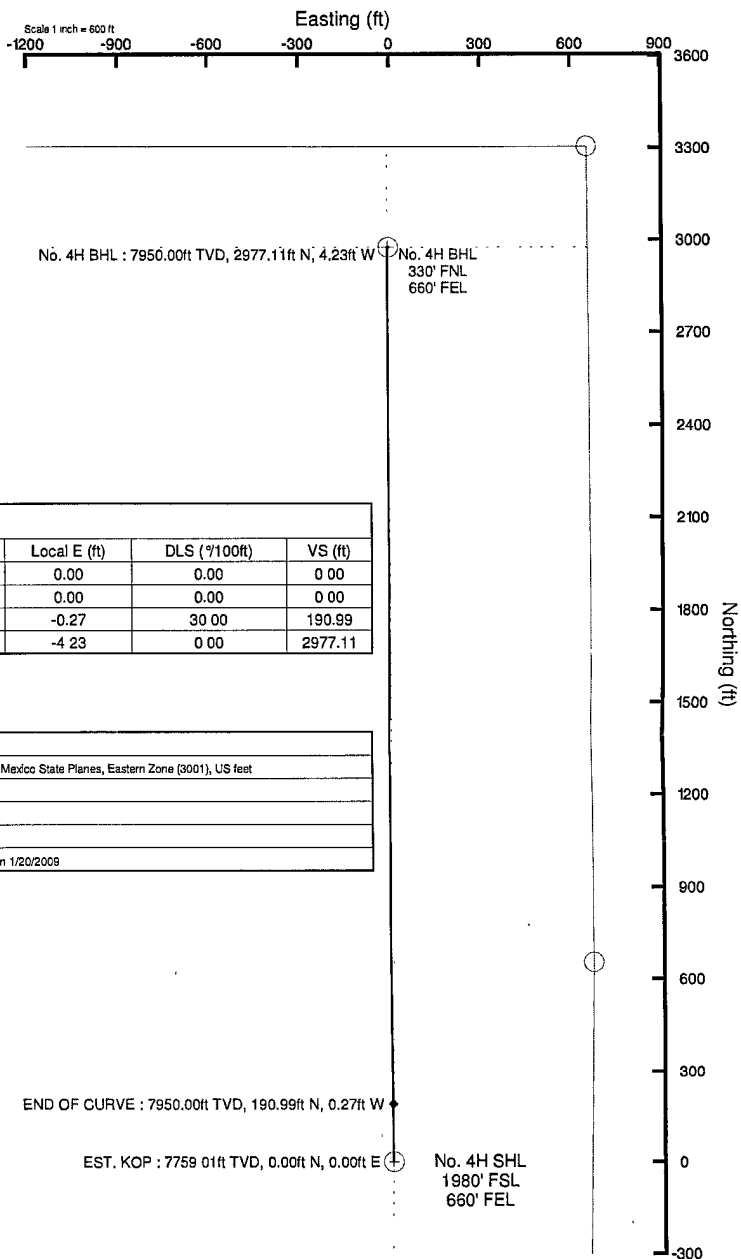
Location: Eddy County, NM
Field: (Superior) Sec 5, T20S, R29E
Facility: Superior Federal No. 4H

Slot: No. 4H SHL
Well: No. 4H
Wellbore: No. 4H PWB



INTEQ

BGM (1945 to 2010) Dp 60.79° Field 49253.6 nT
Magnetic North is 8.22 degrees East of True North (at 1/20/2009)
Grid North is 0.15 degrees East of True North
To correct azimuth from True to Grid subtract 0.15 degrees
To correct azimuth from Magnetic to Grid add 8.07 degrees
For example if the Magnetic North Azimuth = 90 degrees, then the Grid North Azimuth = 90 + 8.07 = 98.07



Well Profile Data

| Design Comment | MD (ft) | Inc (°) | Az (°) | TVD (ft) | Local N (ft) | Local E (ft) | DLS (°/100ft) | VS (ft) |
|----------------|----------|---------|---------|----------|--------------|--------------|---------------|---------|
| Tie On | 0.00 | 0.000 | 359.919 | 0.00 | 0.00 | 0.00 | 0.00 | 0.00 |
| EST. KOP | 7759.01 | 0.000 | 359.919 | 7759.01 | 0.00 | 0.00 | 0.00 | 0.00 |
| END OF CURVE | 8059.01 | 90.000 | 359.919 | 7950.00 | 190.99 | -0.27 | 30.00 | 190.99 |
| No. 4H BHL | 10845.14 | 90.000 | 359.919 | 7950.00 | 2977.11 | -4.23 | 0.00 | 2977.11 |

Plot reference wellpath is Plan #1

True vertical depths are referenced to Rig on No. 4H SHL (RT)

Grid System NAD83 / TM New Mexico State Planes, Eastern Zone (3001), US feet

Measured depths are referenced to Rig on No. 4H SHL (RT)

North Reference Grid north

Rig on No. 4H SHL (RT) to Mean Sea Level, 3309.2 feet

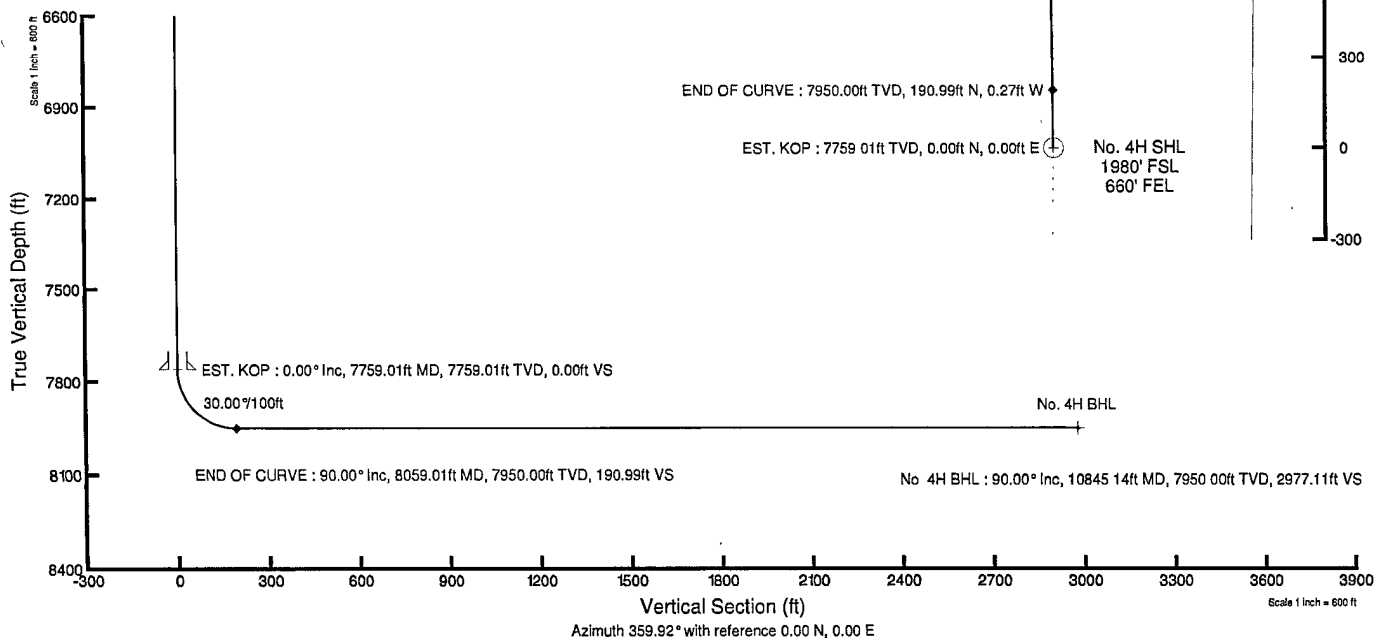
Scale True distance

Mean Sea Level to Mud line (Facility Superior Federal No. 4H), -3292.2 feet

Depths are in feet

Coordinates are in feet referenced to Facility Center

Created by Victor Hernandez on 1/20/2009





Planned Wellpath Report

Plan #1
Page 1 of 3



| REFERENCE WELLPATH IDENTIFICATION | | | |
|-----------------------------------|--------------------------------|----------|------------|
| Operator | Cimarex Energy Co. of Colorado | Slot | No. 4H SHL |
| Area | Eddy County, NM | Well | No. 4H |
| Field | (Superior) Sec 5, T20S, R29E | Wellbore | No. 4H PWB |
| Facility | Superior Federal No. 4H | | |

| REPORT SETUP INFORMATION | | | |
|--------------------------|--|----------------------|---------------------------|
| Projection System | NAD83 / TM New Mexico State Planes, Eastern Zone (3001), US feet | Software System | WellArchitect® 2.0 |
| North Reference | Grid | User | Victor Hernandez |
| Scale | 0.999917 | Report Generated | 1/20/2009 at 2:59:52 PM |
| Convergence at slot | 0.15° East | Database/Source file | WA_Midland/No. 4H_PWB.xml |

| WELLPATH LOCATION | | | | | | |
|-----------------------|-------------------|----------|------------------|----------------|------------------------|-----------------|
| | Local coordinates | | Grid coordinates | | Geographic coordinates | |
| | North[ft] | East[ft] | Easting[USft] | Northing[USft] | Latitude | Longitude |
| Slot Location | 0.00 | 0.00 | 626437.21 | 687928.78 | 32°53'26.979"N | 104°03'21.939"W |
| Facility Reference Pt | | | 626437.21 | 687928.78 | 32°53'26.979"N | 104°03'21.939"W |
| Field Reference Pt | | | 626437.21 | 687928.78 | 32°53'26.978"N | 104°03'21.939"W |

| WELLPATH DATUM | | | |
|--------------------------|------------------------|---|-------------------|
| Calculation method | Minimum curvature | Rig on No. 4H SHL (RT) to Facility Vertical Datum | 17.00ft |
| Horizontal Reference Pt | Facility Center | Rig on No. 4H SHL (RT) to Mean Sea Level | 3309.20ft |
| Vertical Reference Pt | Rig on No. 4H SHL (RT) | Facility Vertical Datum to Mud Line (Facility) | 0.00ft |
| MD Reference Pt | Rig on No. 4H SHL (RT) | Section Origin | N 0.00, E 0.00 ft |
| Field Vertical Reference | Mean Sea Level | Section Azimuth | 359.92° |



Planned Wellpath Report

Plan #1
Page 2 of 3



INTEQ

| REFERENCE WELLPATH IDENTIFICATION | | | |
|-----------------------------------|--------------------------------|----------|------------|
| Operator | Cimarex Energy Co. of Colorado | Slot | No. 4H SHL |
| Area | Eddy County, NM | Well | No. 4H |
| Field | (Superior) Sec 5, T20S, R29E | Wellbore | No. 4H PWB |
| Facility | Superior Federal No. 4H | | |

| WELLPATH DATA (35 stations) † = interpolated/extrapolated station | | | | | | | | |
|---|--------------------|----------------|-------------|-------------------|---------------|--------------|------------------|--------------|
| MD [ft] | Inclination [°] | Azimuth [°] | TVD [ft] | Vert Sect [ft] | North [ft] | East [ft] | DLS [°/100ft] | Comments |
| 0.00 | 0.000 | 359.919 | 0.00 | 0.00 | 0.00 | 0.00 | 0.00 | Tie On |
| 7759.00† | 0.000 | 359.919 | 7759.00 | 0.00 | 0.00 | 0.00 | 0.00 | |
| 7759.01 | 0.000 | 359.919 | 7759.01 | 0.00 | 0.00 | 0.00 | 0.00 | EST. KOP |
| 7859.00† | 29.996 | 359.919 | 7854.49 | 25.58 | 25.58 | -0.04 | 30.00 | |
| 7959.00† | 59.996 | 359.919 | 7924.41 | 95.48 | 95.48 | -0.14 | 30.00 | |
| 8059.00† | 89.996 | 359.919 | 7950.00 | 190.97 | 190.97 | -0.27 | 30.00 | |
| 8059.01 | 90.000 | 359.919 | 7950.00 | 190.99 | 190.99 | -0.27 | 30.00 | END OF CURVE |
| 8159.00† | 90.000 | 359.919 | 7950.00 | 290.97 | 290.97 | -0.41 | 0.00 | |
| 8259.00† | 90.000 | 359.919 | 7950.00 | 390.97 | 390.97 | -0.56 | 0.00 | |
| 8359.00† | 90.000 | 359.919 | 7950.00 | 490.97 | 490.97 | -0.70 | 0.00 | |
| 8459.00† | 90.000 | 359.919 | 7950.00 | 590.97 | 590.97 | -0.84 | 0.00 | |
| 8559.00† | 90.000 | 359.919 | 7950.00 | 690.97 | 690.97 | -0.98 | 0.00 | |
| 8659.00† | 90.000 | 359.919 | 7950.00 | 790.97 | 790.97 | -1.12 | 0.00 | |
| 8759.00† | 90.000 | 359.919 | 7950.00 | 890.97 | 890.97 | -1.27 | 0.00 | |
| 8859.00† | 90.000 | 359.919 | 7950.00 | 990.97 | 990.97 | -1.41 | 0.00 | |
| 8959.00† | 90.000 | 359.919 | 7950.00 | 1090.97 | 1090.97 | -1.55 | 0.00 | |
| 9059.00† | 90.000 | 359.919 | 7950.00 | 1190.97 | 1190.97 | -1.69 | 0.00 | |
| 9159.00† | 90.000 | 359.919 | 7950.00 | 1290.97 | 1290.97 | -1.83 | 0.00 | |
| 9259.00† | 90.000 | 359.919 | 7950.00 | 1390.97 | 1390.97 | -1.98 | 0.00 | |
| 9359.00† | 90.000 | 359.919 | 7950.00 | 1490.97 | 1490.97 | -2.12 | 0.00 | |
| 9459.00† | 90.000 | 359.919 | 7950.00 | 1590.97 | 1590.97 | -2.26 | 0.00 | |
| 9559.00† | 90.000 | 359.919 | 7950.00 | 1690.97 | 1690.97 | -2.40 | 0.00 | |
| 9659.00† | 90.000 | 359.919 | 7950.00 | 1790.97 | 1790.97 | -2.54 | 0.00 | |
| 9759.00† | 90.000 | 359.919 | 7950.00 | 1890.97 | 1890.97 | -2.69 | 0.00 | |
| 9859.00† | 90.000 | 359.919 | 7950.00 | 1990.97 | 1990.97 | -2.83 | 0.00 | |
| 9959.00† | 90.000 | 359.919 | 7950.00 | 2090.97 | 2090.97 | -2.97 | 0.00 | |
| 10059.00† | 90.000 | 359.919 | 7950.00 | 2190.97 | 2190.97 | -3.11 | 0.00 | |
| 10159.00† | 90.000 | 359.919 | 7950.00 | 2290.97 | 2290.97 | -3.25 | 0.00 | |
| 10259.00† | 90.000 | 359.919 | 7950.00 | 2390.97 | 2390.97 | -3.40 | 0.00 | |
| 10359.00† | 90.000 | 359.919 | 7950.00 | 2490.97 | 2490.97 | -3.54 | 0.00 | |



Planned Wellpath Report

Plan #1
Page 3 of 3



INTEQ

| REFERENCE WELLPATH IDENTIFICATION | | | |
|-----------------------------------|--------------------------------|----------|------------|
| Operator | Cimarex Energy Co. of Colorado | Slot | No. 4H SHL |
| Area | Eddy County, NM | Well | No. 4H |
| Field | (Superior) Sec 5, T20S, R29E | Wellbore | No. 4H PWB |
| Facility | Superior Federal No. 4H | | |

| WELLPATH DATA (35 stations) † = interpolated/extrapolated station | | | | | | | | |
|---|--------------------|----------------|-------------|-------------------|---------------|--------------|------------------|------------|
| MD [ft] | Inclination [°] | Azimuth [°] | TVD [ft] | Vert Sect [ft] | North [ft] | East [ft] | DLS [°/100ft] | Comments |
| 10459.00† | 90.000 | 359.919 | 7950.00 | 2590.97 | 2590.97 | -3.68 | 0.00 | |
| 10559.00† | 90.000 | 359.919 | 7950.00 | 2690.97 | 2690.97 | -3.82 | 0.00 | |
| 10659.00† | 90.000 | 359.919 | 7950.00 | 2790.97 | 2790.97 | -3.97 | 0.00 | |
| 10759.00† | 90.000 | 359.919 | 7950.00 | 2890.97 | 2890.97 | -4.11 | 0.00 | |
| 10845.14 | 90.000 | 359.919 | 7950.00 | 2977.11 | 2977.11 | -4.23 | 0.00 | No. 4H BHL |

| HOLE & CASING SECTIONS Ref Wellbore: No. 4H PWB Ref Wellpath: Plan #1 | | | | | | | | | |
|---|------------------|----------------|------------------|-------------------|-----------------|-------------------|-------------------|-----------------|-----------------|
| String/Diameter | Start MD [ft] | End MD [ft] | Interval [ft] | Start TVD [ft] | End TVD [ft] | Start N/S [ft] | Start E/W [ft] | End N/S [ft] | End E/W [ft] |
| 5.5in Casing | 0.00 | 7759.00 | 7759.00 | 0.00 | 7759.00 | 0.00 | 0.00 | 0.00 | 0.00 |
| 4.75in Open Hole | 7759.00 | 10845.14 | 3086.14 | 7759.00 | 7950.00 | 0.00 | 0.00 | 2977.11 | -4.23 |

| TARGETS | | | | | | | | | |
|---------------|------------|-------------|---------------|--------------|-----------------------|------------------------|----------------|-----------------|-------|
| Name | MD [ft] | TVD [ft] | North [ft] | East [ft] | Grid East [srv ft] | Grid North [srv ft] | Latitude | Longitude | Shape |
| 1) No. 4H BHL | 10845.14 | 7950.00 | 2977.11 | -4.23 | 626432.98 | 690905.64 | 32°53'56.434"N | 104°03'21.897"W | point |

| SURVEY PROGRAM Ref Wellbore: No. 4H PWB Ref Wellpath: Plan #1 | | | | |
|---|----------------|------------------------------|------------------|------------|
| Start MD [ft] | End MD [ft] | Positional Uncertainty Model | Log Name/Comment | Wellbore |
| 17.00 | 10845.14 | NaviTrak (Standard) | | No. 4H PWB |

**Superior Federal No. 4
30-015-22395
Cimarex Energy Co. of Colorado
March 3, 2009
Conditions of Approval**

- 1. Test BOP/BOPE equipment.**
- 2. Per the approved sundry for recompletion to the Bone Spring formation in 2004 for Tom Brown, Inc., the third CIBP was to be set at 9000'. The work completed in January 2004 shows 9500'. This needs to be tagged for confirmation of setting depth. If it is set at 9500', an additional plug will be required for the top of the Wolfcamp when the well is abandoned. Top of Wolfcamp is 9157' per completion report. Verification of top of cement will be required to insure that cement exists behind pipe at this depth.**
- 3. Prior to milling window, pressure test squeezed perforations.**
- 4. Submit subsequent sundry detailing work performed and current well test data.**

WWI 030309

District I
1625 N. French Dr., Hobbs, NM 88240
District II
1301 W. Grand Avenue, Artesia, NM 88210
District III
1000 Rio Brazos Rd., Aztec, NM 87410
District IV
1220 S. St. Francis Dr., Santa Fe, NM 87505

State of New Mexico

Energy, Minerals & Natural Resources Department

OIL CONSERVATION DIVISION

1220 South St. Francis Dr.

Santa Fe, NM 87505

Form C-102

Revised October 12, 2005

Submit to Appropriate District Office

State Lease - 4 Copies

Fee Lease - 3 Copies

☐ AMENDED REPORT

WELL LOCATION AND ACREAGE DEDICATION PLAT

| | | |
|---|--|---|
| ¹ API Number 30-015-22395 | ² Pool Code 65010 | ³ Pool Name Winchester; Bone Spring |
| ⁴ Property Code | ⁵ Property Name Superior Federal | ⁶ Well Number 004 |
| ⁷ OGRID No. 162683 | ⁸ Operator Name CIMAREX ENERGY CO. OF COLORADO | ⁹ Elevation 3292.2' GR |

¹⁰ Surface Location

| UL or lot no. | Section | Township | Range | Lot Idn | Feet from the | North/South line | Feet from the | East/West line | County |
|---------------|---------|----------|-------|---------|---------------|------------------|---------------|----------------|--------|
| I | 5 | 20S | 29E | | 1980 | South | 660 | East | Eddy |

¹¹ Bottom Hole Location If Different From Surface

| UL or lot no. | Section | Township | Range | Lot Idn | Feet from the | North/South line | Feet from the | East/West line | County |
|---------------|---------|----------|-------|---------|---------------|------------------|---------------|----------------|--------|
| A | 5 | 20S | 29E | | 330 | North | 660 | East | Eddy |

| | | | |
|--------------------------------------|-------------------------------|----------------------------------|-------------------------|
| ¹² Dedicated Acres 120 | ¹³ Joint or Infill | ¹⁴ Consolidation Code | ¹⁵ Order No. |
|--------------------------------------|-------------------------------|----------------------------------|-------------------------|

No allowable will be assigned to this completion until all interests have been consolidated or a non-standard unit has been approved by the division.

| | |
|--|---|
| | <p>¹⁷ OPERATOR CERTIFICATION</p> <p>I hereby certify that the information contained herein is true and complete to the best of my knowledge and belief, and that this organization either owns a working interest or unleased mineral interest in the land including the proposed bottom hole location or has a right to drill this well at this location pursuant to a contract with an owner of such a mineral or working interest, or to a voluntary pooling agreement or a compulsory pooling order heretofore entered by the division.</p> <p><i>Zeno Farris</i> 1/28/2009</p> <p>Signature Date</p> <p>Zeno Farris</p> <p>Printed Name</p> |
| | <p>¹⁸ SURVEYOR CERTIFICATION</p> <p>I hereby certify that the well location shown on this plat was plotted from field notes of actual surveys made by me or under my supervision, and that the same is true and correct to the best of my belief.</p> <p>Date of Survey</p> <p>Signature and Seal of Professional Surveyor:</p> |
| | <p>Certificate Number</p> |