

Submit 3 Copies To Appropriate District Office  
District I  
1625 N. French Dr., Hobbs, NM 88240  
District II  
1301 W. Grand Ave., Artesia, NM 88210  
District III  
1000 Rio Brazos Rd., Aztec, NM 87410  
District IV  
1220 S St Francis Dr., Santa Fe, NM 87505

State of New Mexico  
Energy, Minerals and Natural Resources

OIL CONSERVATION DIVISION  
1220 South St. Francis Dr.  
Santa Fe, NM 87505

MAR 20 2009

Form C-103  
May 27, 2004

WELL API NO. 30-015-03544
5. Indicate Type of Lease STATE <input checked="" type="checkbox"/> FEE <input type="checkbox"/>
6. State Oil & Gas Lease No.
7. Lease Name or Unit Agreement Name STATE B7717 # 1
8. Well Number 3
9. OGRID Number 1903
10. Pool name N/A

SUNDRY NOTICES AND REPORTS ON WELLS  
(DO NOT USE THIS FORM FOR PROPOSALS TO DRILL OR TO DEEPEN OR PLUG BACK TO A DIFFERENT RESERVOIR USE "APPLICATION FOR PERMIT" (FORM C-101) FOR SUCH PROPOSALS)

1. Type of Well: Oil Well ☒ Gas Well ☐ Other

2. Name of Operator  
BEACH EXPLORATION, INC.

3. Address of Operator  
800 NORTH MARIENFELD, SUITE 200, MIDLAND, TX 79701

4. Well Location  
Unit Letter I; 1980 feet from the SOUTH line and 660 feet from the EAST line  
Section 2 Township 19S Range 29E NMPM EDDY County

11. Elevation (Show whether DR, RKB, RT, GR, etc.)

Pit or Below-grade Tank Application ☐ or Closure ☐

Pit type \_\_\_\_\_ Depth to Groundwater \_\_\_\_\_ Distance from nearest fresh water well \_\_\_\_\_ Distance from nearest surface water \_\_\_\_\_

Pit Liner Thickness: \_\_\_\_\_ mil Below-Grade Tank: Volume \_\_\_\_\_ bbls; Construction Material \_\_\_\_\_

12. Check Appropriate Box to Indicate Nature of Notice, Report or Other Data

NOTICE OF INTENTION TO:

PERFORM REMEDIAL WORK ☐ PLUG AND ABANDON ☐  
TEMPORARILY ABANDON ☐ CHANGE PLANS ☐  
PULL OR ALTER CASING ☐ MULTIPLE COMPL ☐

OTHER: ☐

SUBSEQUENT REPORT OF:

REMEDIAL WORK ☐ ALTERING CASING ☐  
COMMENCE DRILLING OPNS. ☐ P AND A ☐  
CASING/CEMENT JOB ☐

OTHER: RE-PLUG FOR EASTLAND QUEEN UNIT WATER FLOOD ☒

13. Describe proposed or completed operations. (Clearly state all pertinent details, and give pertinent dates, including estimated date of starting any proposed work). SEE RULE 1103. For Multiple Completions: Attach wellbore diagram of proposed completion or recompletion.

09/16/09 Removed dry hole marker. Tied 8 5/8" csg back to surf. Installed wellhead  
10/27/08 Notified Mike Bratcher (NM OCD) would start plugging operations  
RU. NU BOP and ran 6 1/4" bit. No surface cmt plug. Drilled cmt from 139' to 253' inside 7" csg  
10/28/09 Drld cmt from 253' to 378'. Tagged next cmt plug at 882'. Started drilling metal to 914' inside 7" csg  
10/31/08 Spent 3 days drilling and fishing 2 3/8" joint inside 7" csg (metal was a weight joint for nitro cutoff charge)  
11/03/08 Drld cmt inside 7" csg w/6 1/4" bit to 1052', from 1570' to 1675' and from 2170' to 2280'. Tagged cmt plug at 2577'.  
11/04/08 Loaded hole w/9ppg salt gel. Perf'd 7" csg at 2200' w/4 holes. Perfs would not take fluid. Press to 800 psi.  
Permission from Mike Bratcher (OCD NM) to pump a 100' plug inside 7" csg. Pumped 25sx Class C plug at 2209' ✓  
11/05/08 Tagged plug at 2085' (124' cmt plug) Perf'd 7" csg at 1680' w/4 holes. Perfs would not take fluid Press to 725 psi  
Permission from Mike Bratcher (OCD NM) to pump a 25sx plug at 1680' inside 7" csg.  
Pumped 25sx Class C cmt plug at 1693'. WOC. Tagged plug at 1549' (144' cmt plug) ✓  
Permission from Mike Bratcher (OCD NM) to not perf 7" csg at 1180'. Lost circ at 914' where old nitro tool was drld  
Spotted 85sx Class C cmt plug at 1075' and squeezed under a packer to 1,000 psi. ✓  
11/06/08 Tagged cmt plug at 615' (460' plug inside 7" and 109' of cmt behind pipe) Reloaded hole w/9ppg salt gel.  
Pumped 45sx Class C cmt plug at 446' inside 7" csg. WOC. Tagged plug at 185' (261' cmt plug) ✓  
Pumped 15sx Class C cmt plug from 60' to surf ✓  
11/07/08 Notified Mike Bratcher (NM OCD) of all cmt plugs Removed anchors. Cutoff wellhead. Set regulation dry hole maker.

AWAITING FORM C103-  
LOCATION READY REPORT

I hereby certify that the information above is true and complete to the best of my knowledge and belief. I further certify that any pit or below-grade tank has been/will be constructed or closed according to NMOCD guidelines ☐, a general permit ☐ or an (attached) alternative OCD-approved plan ☐.

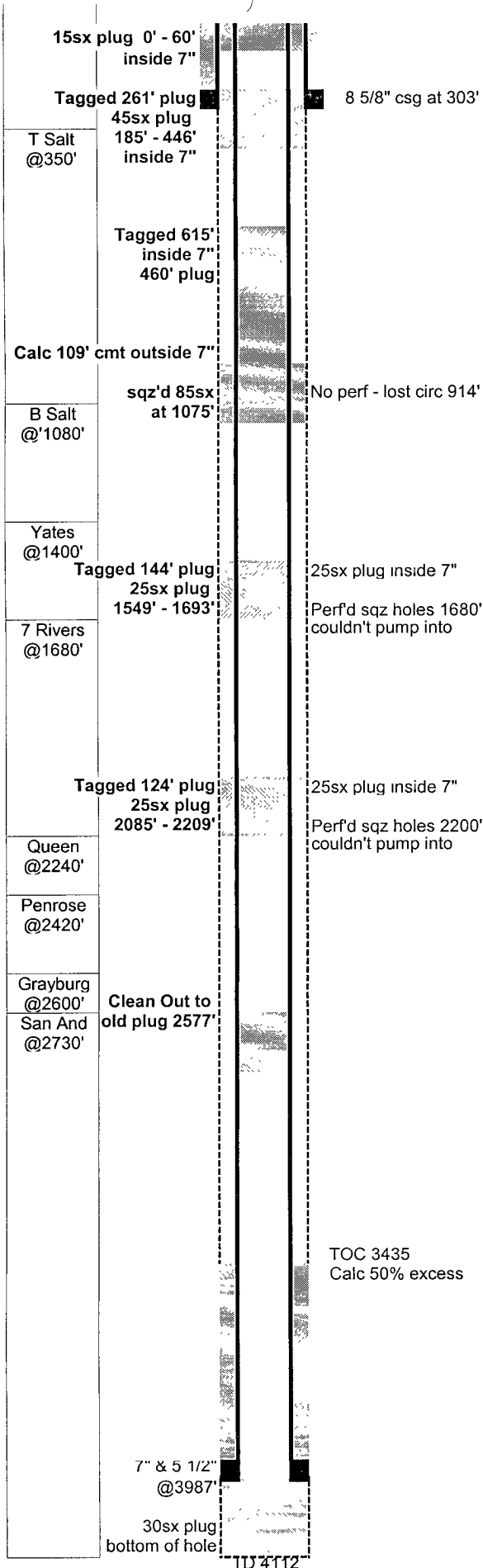
SIGNATURE Jack M. Rose TITLE Engineer DATE March 18, 2009

Type or print name Jack M. Rose

E-mail address: bmartin@beachexp.com Telephone No. (432) 683-6226

For State Use Only

APPROVED BY: Ruth Inge TITLE COMPLIANCE OFFICER DATE 4/24/09  
Conditions of Approval (if any):



## State B7717 #1

**GL:** 3,367 **Status:** P&A  
**KB:** **Perfs:**  
**TD:** 4,112  
**PBD:** **API:** 30-015-03544  
**Fr. Wtr:** **NM Lse:** B-7717  
**Legal:** 1,980 from S **Field:**  
 660 from E  
**Section:** 2-I **Logs:** No logs  
**Township:** 19S  
**Range:** 29E  
**County:** Eddy **Archeological:**

Casing	Wt	Type	Set	Cmt	Hole	TOC	Method
8-5/8"	24.00		303	50	10"	Prob 50'	Calc Surface
7" & 5- 1/2"	20 & 17	7" 20# to 2647 7" 17# to 3147 5 1/2" 17# to 3987	3,987	130	7-7/8"	3435'	Calc 50% ex

17-Feb-48 Spud well  
**Leonard Oil Company - State B7717 #1**

27-May-52 **Completion**  
 OH 3987 - 4112  
 Chem treat shot OH

26-May-53 **P&A - Leonard Oil Co**  
 30sx plug in bottom of hole  
 mudded to surface and put a marker at surface

3-Feb-96 **P&A again NM State**  
 P&A marker was leaking fluids  
 RIH to 2809 without tagging any plugs  
 Perf at 2750 to sqz couldn't sqz and spotted 30sx plug across perf  
 25sx plug at 2250  
 25sx plug at 1650  
 25sx plug 1000  
 Perf csg at 425' and sqz w/100sx  
 set 10sx surface plug and set marker

**Beach Re-plug for Eastland Queen Waterflood**  
 09/16/09 Removed dry hole marker. Tied 8 5/8" csg back to surf. Installed wellhead.  
 10/27/08 Notified Mike Bratcher (NM OCD) would start plugging operations  
 RU. NU BOP and ran 6 1/4" bit. No surface cmt plug. Drilled cmt from 139' to  
 to 253' inside 7" csg.  
 10/28/09 Drld cmt from 253' to 378'. Tagged next cmt plug at 882'. Started drilling metal  
 to 914' inside 7" csg  
 10/31/08 Spent 3 days drilling and fishing 2 3/8" joint inside 7" csg (metal was a weight  
 joint for nitro cutoff charge)  
 11/03/08 Drld cmt inside 7" csg w/6 1/4" bit to 1052', from 1570' to 1675' and from 2170'  
 to 2280'. Tagged cmt plug at 2577'.  
 11/04/08 Loaded hole w/9ppg salt gel. Perf'd 7" csg at 2200' w/4 holes. Perfs would not  
 take fluid. Press to 800 psi.  
 Permission from Mike Bratcher (OCD NM) to pump a 100' plug inside 7" csg.  
 Pumped 25sx Class C plug at 2209'  
 11/05/08 Tagged plug at 2085' (124' cmt plug). Perf'd 7" csg at 1680' w/4 holes.  
 Perfs would not take fluid. Press to 725 psi  
 Permission Mike Bratcher (OCD NM) to pump a 25sx plug at 1680' inside 7" csg.  
 Pumped 25sx Class C cmt plug at 1693'. WOC. Tagged plug 1549' (144' cmt plug)  
 Permission from Mike Bratcher (OCD NM) to not perf 7" csg at 1180'.  
 Lost circ at 914' where old nitro tool was drld.  
 Spotted 85sx Class C cmt plug at 1075' & squeezed under a packer to 1,000 psi.  
 11/06/08 Tagged cmt plug at 615' (460' plug inside 7" and 109' of cmt behind pipe).  
 Reloaded hole w/9ppg salt gel  
 Pumped 45sx Class C cmt plug at 446' inside 7" csg. WOC.  
 Tagged plug at 185' (261' cmt plug)  
 Pumped 15sx Class C cmt plug from 60' to surf.  
 11/07/08 Notified Mike Bratcher (NM OCD) of all cmt plugs.  
 Removed anchors. Cutoff wellhead. Set regulation dry hole marker