

NEW MEXICO OIL CONSERVATION DIVISION
SOUTHEAST NEW MEXICO PACKER LEAKAGE TEST

Revised June 9, 2003

Operator Concho Exploration Lease Teledyne 18 Well No. 181
Location Of Well: Unit J Section 18 Township 23-S Range 29E County Eddy

	Name of Reservoir or Pool	Type of Prod. (Oil or Gas)	Method of Prod. (Flow Art. Lift)	Prod. Medium (Tbg. Or Cag.)	Choke Size
Upper Completion	<u>Logan Draw</u>	<u>G</u>	<u>F</u>	<u>C59</u>	<u>Full</u>
Lower Completion	<u>Empire Morrow</u>	<u>G</u>	<u>F</u>	<u>Tbg</u>	<u>Full</u>

FLOW TEST NO. 1

Both zones shut-in at (hour, date): 9:00 AM 11-28-03

Well opened at (hour, date): 9:00 AM 12-1-03

Indicate by (X) the zone producing..... X

Pressure at beginning of test..... 350[#]

Stabilized? (Yes or No)..... RECEIVED

Maximum pressure during test..... DEC 1 2 2003 590[#]

Minimum pressure during test..... OCD-ARTESIA 300[#]

Pressure at conclusion of test..... 450[#]

Pressure change during test (Maximum minus Minimum)..... +290

Was pressure change an increase or a decrease?..... INCREASE

Well closed at (hour, date): 9:00 AM 11-28-03 Total Time On Production 24 hrs

Oil Production Gas Production
During Test: 0 bbls; Grav. 0; During Test 23 mcf MCF; GOR

Remarks:

FLOW TEST NO. 2

Both zones shut-in at (hour, date): 9:00 AM 11-28-03

Well opened at (hour, date): 9:00 AM 11-29-03

Indicate by (X) the zone producing..... X

Pressure at beginning of test..... 350[#]

Stabilized? (Yes or No)..... Y

Maximum pressure during test..... 780[#]

Minimum pressure during test..... 300

Pressure at conclusion of test..... 300

Pressure change during test (Maximum minus Minimum)..... +480

Was pressure change an increase or a decrease?..... INCREASE

Well closed at (hour, date): 11-30-03 Total Time On Production 24

Oil Production Gas Production
During Test: 0 bbls; Grav. 0; During Test 249 MCF; GOR

Remarks:

I hereby certify that the information herein contained is true and complete to the best of my knowledge.

Approved APPROVED DEC 1 5 2003 20
New Mexico Oil Conservation Division

By [Signature]
Title Field Rep ID

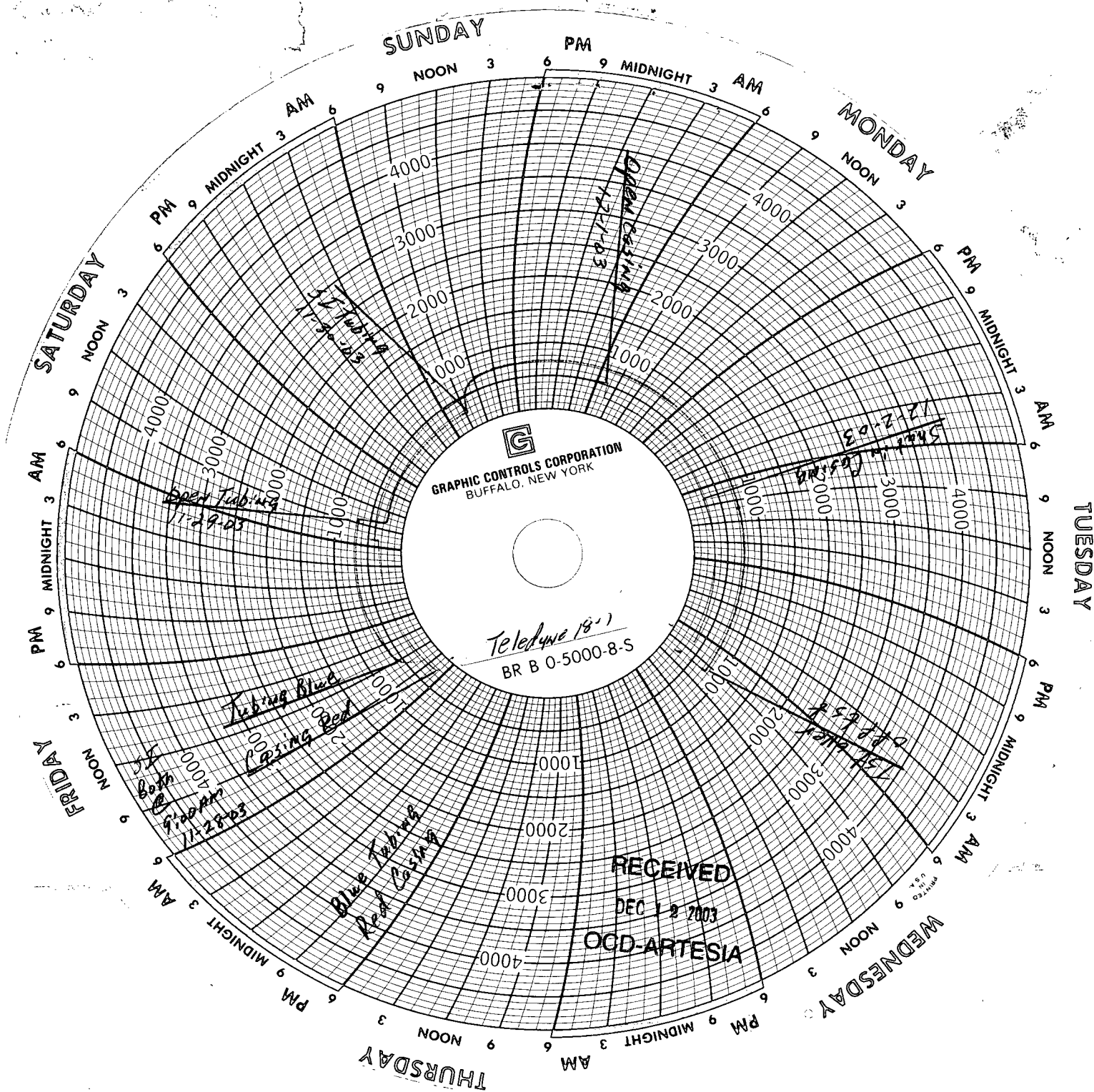
Operator Concho Exploration

By Gary Geeslin

Title Contract Pumper

E-mail Address

Date 12-9-03



APPROVED DEC 1 8 2003