

UNITED STATES  
DEPARTMENT OF THE INTERIOR  
BUREAU OF LAND MANAGEMENT

APPLICATION FOR PERMIT TO DRILL OR REENTER

N.M. Oil Cons. DIV-Dist. 2  
1301 W. Grand Avenue  
Artesia, NM 88210

FORM APPROVED  
OMB No. 1004-0136  
Expires January 31, 2004

5. Lease Serial No.

NM 110350

6. If Indian, Allottee or Tribe Name

7. If Unit or CA Agreement, Name and No.

8. Lease Name and Well No.

Dice Roll Federal Com #1

9. API Well No.

30-015-33144

10. Field and Pool, or Exploratory

Burton Flat; Morrow, East

11. Sec., T., R., M., or Blk. and Survey or Area

Sec. 13, T20S, R29E

12. County or Parish

Eddy

13. State

NM

1a. Type of Work: ☒ DRILL

☐ REENTER

1b. Type of Well: ☐ Oil Well ☒ Gas Well ☐ Other

☒ Single Zone ☐ Multiple Zone

2. Name of Operator

SECRETARY'S POTASH

Marbob Energy Corporation

3a. Address

PO Box 227, Artesia, NM 88211-0227

3b. Phone No. (include area code)

505-748-3303 Fax 746-2523

4. Location of Well (Report location clearly and in accordance with any State requirements. \*)

At surface 1980' FSL & 660' FEL, Unit I

At proposed prod. zone same

RECEIVED

DEC - 9 2003

14. Distance in miles and direction from nearest town or post office\*

OCD-ARTESIA

15. Distance from proposed\*  
location to nearest  
property or lease line, ft.  
(Also to nearest drig. unit line, if any)

16. No. of Acres in lease

160

17. Spacing Unit dedicated to this well

E/2

18. Distance from proposed location\*  
to nearest well, drilling, completed,  
applied for, on this lease, ft.

19. Proposed Depth

12500'

20. BLM/BIA Bond No. on file

585716

21. Elevations (Show whether DF, KDB, RT, GL, etc.)

3219' GL

22. Approximate date work will start\*

November 10, 2003

23. Estimated duration

21 days

24. Attachments

CAPITAN CONTROLLED WATER BASIN

The following, completed in accordance with the requirements of Onshore Oil and Gas Order No.1, shall be attached to this form:

1. Well plat certified by a registered surveyor.

2. A Drilling Plan.

3. A Surface Use Plan (if the location is on National Forest System Lands, the  
SUPO shall be filed with the appropriate Forest Service Office).

4. Bond to cover the operations unless covered by an existing bond on file (see  
Item 20 above).

5. Operator certification.

6. Such other site specific information and/or plans as may be required by the  
authorized officer.

25. Signature

Name (Printed/Typed)

Date

Melanie J. Parker

10/06/03

Title

Land Department

Approved by (Signature)

/s/ Linda S. C. Rundell

Name (Printed/Typed)

/s/ Linda S. C. Rundell

Date

2 DEC 2003

Title

STATE DIRECTOR

Office

NM STATE OFFICE

Application approval does not warrant or certify that the applicant holds legal or equitable title to those rights in the subject lease which would entitle the applicant to conduct operations thereon.

Conditions of approval, if any, are attached.

APPROVAL FOR 1 YEAR

Title 18 U.S.C. Section 1001 and Title 43 U.S.C. Section 1212, make it a crime for any person knowingly and willfully to make to any department or agency of the United States any false, fictitious or fraudulent statements or representations as to any matter within its jurisdiction.

\*(Instructions on reverse)

APPROVAL SUBJECT TO  
GENERAL REQUIREMENTS  
AND SPECIAL STIPULATIONS  
ATTACHED

**DISTRICT I**  
P.O. Box 1980, Hobbs, NM 88241-1980

Energy, Minerals and Natural Resources Department

Form C-102  
Revised February 10, 1994  
Submit to Appropriate District Office  
State Lease - 4 Copies  
Fee Lease - 3 Copies

DISTRICT II  
P.O. Drawer DD, Artesia, NM 88211-0719

## OIL CONSERVATION DIVISION

P.O. Box 2088

Santa Fe, New Mexico 87504-2088

**DISTRICT III**  
1000 Rio Brazos Rd., Aztec, NM 87410

**DISTRICT IV**  
P.O. BOX 2088, SANTA FE, N.M. 87504-2088

# WELL LOCATION AND ACREAGE DEDICATION PLAT

☐ AMENDED REPORT

API Number		Pool Code	Pool Name
		73320	BURTON FLAT; MORROW, EAST
Property Code	Property Name		Well Number
	DICE ROLL FEDERAL COM.		1
OGRID No.	Operator Name		Elevation
14049	MARBOB ENERGY CORPORATION		3219'

### Surface Location

UL or lot No.	Section	Township	Range	Lot Idn	Feet from the	North/South line	Feet from the	East/West line	County
1	13	20-S	29-E		1980	SOUTH	660	EAST	EDDY

## Bottom Hole Location If Different From Surface

UL or lot No.	Section	Township	Range	Lot Idn	Feet from the	North/South line	Feet from the	East/West line	County
Dedicated Acres 320	Joint or Infill	Consolidation Code		Order No.					

NO ALLOWABLE WILL BE ASSIGNED TO THIS COMPLETION UNTIL ALL INTERESTS HAVE BEEN CONSOLIDATED  
OR A NON-STANDARD UNIT HAS BEEN APPROVED BY THE DIVISION

	<b>OPERATOR CERTIFICATION</b>  I hereby certify the information contained herein is true and complete to the best of my knowledge and belief.   Signature <b>MELANIE J. PARKER</b> Printed Name <b>LAND DEPARTMENT</b> Title <b>10/06/03</b> Date
	<b>SURVEYOR CERTIFICATION</b>  I hereby certify that the well location shown on this plat was plotted from field notes of actual surveys made by me or under my supervision, and that the same is true and correct to the best of my belief.  <b>JULY 17, 2003</b> Date Surveyed  Signature of Professional Surveyor  Certificate No. <b>RONALD J. EIDSON 3239</b> <b>GARY EIDSON 12641</b>

**MARBOB ENERGY CORPORATION**  
**DRILLING AND OPERATIONS PROGRAM**

**Dice Roll Federal Com #1**  
**1980' FSL & 660' FEL, Unit I**  
**Section 13, T20S, R29E**  
**Eddy County, New Mexico**

In conjunction with Form 3160-3, Application for Permit to Drill subject well, Marbob Energy Corporation submits the following ten items of pertinent information in accordance with BLM requirements.

1. The geological surface formation is Permian.
2. The estimated tops of geologic markers are as follows:

Top of Salt	450'	Bone Spring	6420'
Base of Salt	1250'	Wolfcamp	9821'
Yates	1407'	Strawn	10815'
Seven Rivers	1752'	Atoka	11211'
Reef	1906'	Morrow Clastics	11938'
Delaware	3882'	TD	12500'

3. The estimated depths at which anticipated water, oil or gas formations are expected to be encountered:

Reef	1906'	Water
Delaware	3882'	Oil
Wolfcamp	9821'	
Strawn	10815'	Gas
Atoka	11211'	
Morrow	11938'	

No other formations are expected to give up oil, gas, or fresh water in measurable quantities. The surface fresh water sands will be protected by setting 20" casing at 300' and circulating cement back to surface. Any shallower zones above TD which contain commercial quantities of oil and/or gas will have cement circulated across them by inserting a float shoe joint into the 5 1/2" production casing which will be run at TD to sufficiently cover all known oil and gas horizons above 200'.

4. Proposed Casing Program:

Hole Size	Interval	OD Casing	Wt	Grade	
WITNESS 26"	0 - 300'	20"	94#	H-40	WITNESS
17 1/2"	0 - 1350'	13 3/8"	48#	H-40	
12 1/4"	0 - 3600'	8 5/8"	32#	J-55	
7 7/8"	0 - 12500'	5 1/2"	17#	P-110 LT&C	

Proposed Cement Program:

20" Surface Casing: Cement w/ 400 sx Premium Plus. Circulate to surface.

13 3/8" Intermediate Casing: Cement w/ 900 sx cmt. Circulate to surface.

8 5/8" Intermediate Casing: Cement w/ 900 sx cmt. Attempt to tie in to 13 3/8" csg.

5 1/2" Production Casing: Cement w/ 700 sx cmt. Attempt to tie in to 8 5/8" csg.

5. Pressure Control Equipment: See Exhibit 1.

6. Mud Program: The applicable depths and properties of this system are as follows:

Depth	Type	Weight (ppg)	Viscosity (sec)	Waterloss (cc)
0 – 300'	Fresh Wtr	8.4 – 9.2	32 – 36	N.C.
300 – 1350'	Brine	9.9 – 10.2	28 – 32	N.C.
1350 – 3600'	Fresh Wtr	8.4 – 8.6	28 – 32	N.C.
3600 – 12500'	Cut Brine	8.7 – 9.5	28 – 34	N.C.

7. Auxiliary Equipment: Kelly Cock; Sub with full opening valve on floor; and drill pipe connections.

8. Testing, Logging and Coring Program:

No drillstem tests are anticipated.

The electric logging program will consist of Dual Laterolog Micro SFL, Spectral Density Dual Spaced Neutron Csg Log, and Depth Control Log.

No conventional coring is anticipated.

9. No abnormal pressures or temperatures are anticipated.

10. Anticipated starting date: As soon as possible after approval.

**MARBOB ENERGY CORPORATION**  
**MULTI-POINT SURFACE USE AND OPERATIONS PLAN**

**Dice Roll Federal Com #1**  
**1980' FSL & 660' FEL, Unit I**  
**Section 13, T20S, R29E**  
**Eddy County, New Mexico**

This plan is submitted with Form 3160-3, Application for Permit to Drill, covering the above described well. The purpose of this plan is to describe the location of the proposed well, the proposed construction activities and operations plan, the magnitude of the surface disturbance involved and the procedures to be followed in rehabilitating the surface after completion of the operations, so that a complete appraisal can be made of the environmental effect associated with the operations.

**1. EXISTING ROADS:**

Exhibit 2 is a portion of a topo map showing the well and roads in the vicinity of the proposed location. The proposed wellsite and the access route to the location are indicated in red on Exhibit 2.

**DIRECTIONS:**

Proceed east of Carlsbad approximately 12 miles on Hwy 62-180 to CR 238. Go north 1.2 miles to CR 239 and turn east 1.2 miles. Turn north on lease road 2 miles. Access road and location on west side of lease road.

**2. PLANNED ACCESS ROAD:**

A new access road of 990' will be necessary. The new road will be constructed as follows:

- A. The maximum width of the running surface will be 10'. The road will be crowned and ditched and constructed of 6" of rolled and compacted caliche. Ditches will be at 3:1 slope and 4 feet wide. Water will be diverted where necessary to avoid ponding, prevent erosion, maintain good drainage, and to be consistent with local drainage patterns. BLM may specify any additions or changes during the onsite inspection.
- B. The average grade will be less than 1%.
- C. No turnouts are planned.
- D. No culverts, cattleguard, gates, low-water crossings, or fence cuts are necessary.
- E. Surfacing material will consist of native caliche. Caliche will be obtained from the nearest BLM-approved caliche pit. Any additional materials that are required will be purchased from the dirt contractor.

- F. The proposed access road as shown in Exhibit 2 has been centerline flagged by John West Engineering.

**3. LOCATION OF EXISTING AND/OR PROPOSED FACILITIES:**

- A. Marbob Energy Corporation proposes a collection facility, if well is productive, to be located on Dice Roll Federal Com #1 well pad.

**4. METHODS OF HANDLING WASTE DISPOSAL:**

- A. Drill cuttings will be disposed of in the lined pit.
- B. Drilling fluids will be allowed to evaporate in the lined pit until the pit is dry.
- C. Water produced during completion may be disposed into the lined reserve pit.
- D. All trash and debris will be removed from the wellsite within 30 days after finishing drilling and/or completion operations. All waste material will be contained to prevent scattering by the wind.

**5. WELLSITE LAYOUT:**

- A. Exhibit 3 shows the relative location and dimensions of the well pad, the pit.
- B. The reserve pit will be lined with high quality plastic sheeting.

**6. PLANS FOR RESTORATION:**

- A. After finishing drilling and/or completion operations, all equipment and other material not needed for further operations will be removed. The location will be cleaned of all trash and junk to leave the wellsite in as aesthetically pleasing a condition as possible.
- B. Reserve pit will be fenced until they have dried and been leveled.
- C. All rehabilitation and/or vegetation requirements of the BLM will be complied with and will be accomplished as expeditiously as possible. All pits will be filled level within 90 days after abandonment.

**7. SURFACE OWNERSHIP:**

The well site and lease are located on Federal surface

- A. The area around the well site is grassland and the top soil is sandy. The vegetation is native scrub grasses with abundant oakbrush, sagebrush, yucca, and prickly pear.
- B. A Cultural Resources Examination has been requested and will be forwarded to your office in the near future.

**8. OTHER INFORMATION:**

- A. Topography: Refer to the existing archaeological report for a description of the topography, flora, fauna, soil characteristics, dwellings, historical and cultural sites.

**9. OPERATOR'S REPRESENTATIVE:**

A. Through A.P.D. Approval:

Dean Chumbley, Landman  
Marbob Energy Corporation  
P. O. Box 227  
Artesia, NM 88211-0227  
Phone (505)748-3303  
Cell (505)748-5988

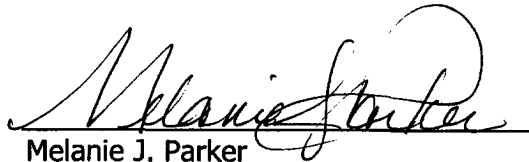
B. Through Drilling Operations

Sheryl Baker, Drilling Supervisor  
Marbob Energy Corporation  
P. O. Box 227  
Artesia, NM 88211-0227  
Phone (505)748-3303  
Cell (505)748-5489

**10. CERTIFICATION:**

I hereby certify that I, or persons under my direct supervision, have inspected the proposed drillsite and access route, that I am familiar with the conditions which presently exist; that the statements made in this plan are to the best of my knowledge, true and correct; and that the work associated with the operations proposed herein will be performed by Marbob Energy Corporation and its contractors and subcontractors in conformity with this plan and the terms and conditions under which it is approved. This statement is subject to the provisions of 18 U.S.C. 1001 for the filing of a false statement.

10/6/03  
Date

  
Melanie J. Parker  
Land Department

## **MARBOB ENERGY CORPORATION**

### **HYDROGEN SULFIDE DRILLING OPERATIONS PLAN**

#### **I. HYDROGEN SULFIDE TRAINING**

All personnel, whether regularly assigned, contracted, or employed on an unscheduled basis, will receive training from a qualified instructor in the following areas prior to commencing drilling operations on this well:

- A. The hazards and characteristics of hydrogen sulfide (H<sub>2</sub>S).
- B. The proper use and maintenance of personal protective equipment and life support systems.
- C. The proper use of H<sub>2</sub>S detectors, alarms, warning systems, briefing areas, evacuation procedures, and prevailing winds.
- D. The proper techniques for first aid and rescue procedures.

In addition, supervisory personnel will be trained in the following areas:

- A. The effects of H<sub>2</sub>S on metal components. If high tensile tubulars are to be used, personnel will be trained in their special maintenance requirements.
- B. Corrective action and shut-in procedures when drilling or reworking a well and blowout prevention and well control procedures.
- C. The contents and requirements of the H<sub>2</sub>S Drilling Operations Plan and the Public Protection Plan.

There will be an initial training session just prior to encountering a known or probable H<sub>2</sub>S zone (within 3 days or 500 feet) and weekly H<sub>2</sub>S and well control drills for all personnel in each crew. The initial training session shall include a review of the site specific H<sub>2</sub>S Drilling Operations Plan and the Public Protection Plan. This plan shall be available at the well site. All personnel will be required to carry documentation that they have received the proper training.



## **II. H<sub>2</sub>S SAFETY EQUIPMENT AND SYSTEMS**

Note: All H<sub>2</sub>S safety equipment and systems will be installed, tested, and operational when drilling reaches a depth of 500 feet above, or three days prior to penetrating the first zone containing or reasonably expected to contain H<sub>2</sub>S.

### **A. Well Control Equipment:**

Flare line.

Choke manifold.

Blind rams and pipe rams to accommodate all pipe sizes with properly sized closing unit.

Auxiliary equipment to include: annular preventer, mud-gas separator, rotating head.

### **B. Protective equipment for essential personnel:**

Mark II Surviveair 30-minute units located in the dog house and at briefing areas.

### **C. H<sub>2</sub>S detection and monitoring equipment:**

2 - portable H<sub>2</sub>S monitor positioned on location for best coverage and response. These units have warning lights and audible sirens when H<sub>2</sub>S levels of 20 ppm are reached.

### **D. Visual warning systems:**

Caution/Danger signs shall be posted on roads providing direct access to location. Signs will be painted a high visibility yellow with black lettering of sufficient size to be readable at a reasonable distance from the immediate location. Bilingual signs will be used, when appropriate. See example attached.

E. Mud Program:

The mud program has been designed to minimize the volume of H<sub>2</sub>S circulated to the surface.

A mud-gas separator will be utilized.

F. Metallurgy:

All drill strings, casings, tubing, wellhead, blowout preventers, drilling spool, kill lines, choke manifold and lines, and valves shall be suitable for H<sub>2</sub>S service.

G. Communication:

Company vehicles equipped with cellular telephone and 2-way radio.

# **W A R N I N G**

**YOU ARE ENTERING AN H<sub>2</sub>S AREA  
AUTHORIZED PERSONNEL ONLY**

- 1. BEARDS OR CONTACT LENSES NOT ALLOWED**
- 2. HARD HATS REQUIRED**
- 3. SMOKING IN DESIGNATED AREAS ONLY**
- 4. BE WIND CONSCIOUS AT ALL TIMES**
- 5. CK WITH MARBOB FOREMAN AT MAIN OFFICE**

**MARBOB ENERGY CORPORATION**

**1-505-748-3303**

## STATEMENT ACCEPTING RESPONSIBILITY FOR OPERATIONS

The undersigned accepts all applicable terms, conditions, stipulations, and restrictions concerning operations conducted on the leased land or portion thereof, as described below:

Date: October 3, 2003

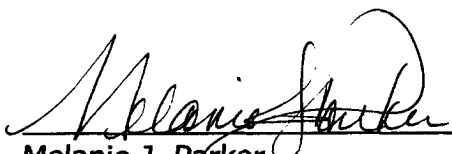
Lease #: NM 110350  
Dice Roll Federal Com

Legal Description: Section 13: E/2 E/2  
Township 20S – Range 29E  
Eddy County, New Mexico

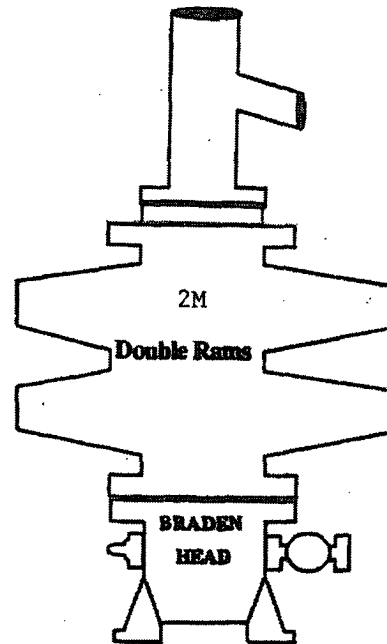
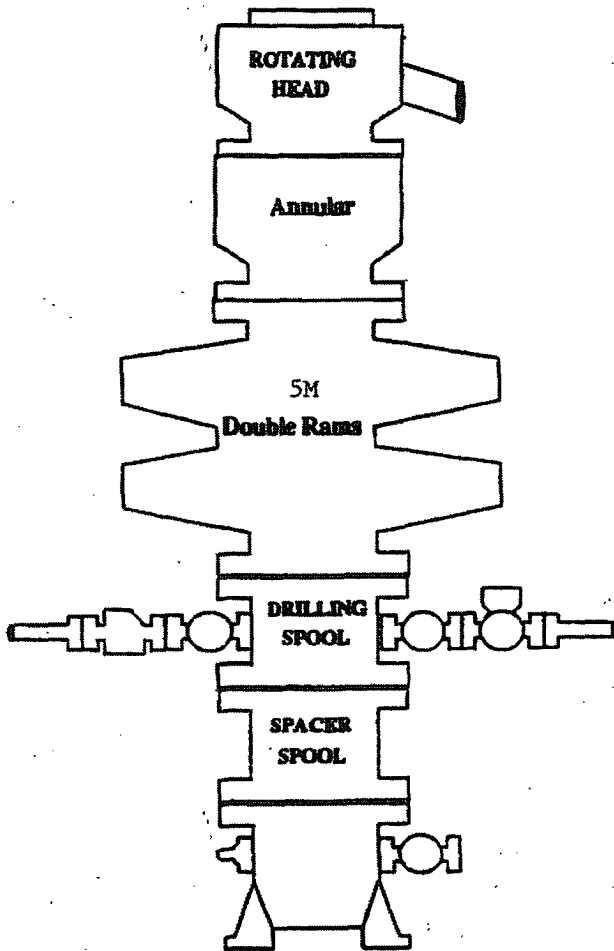
Formation(s): Morrow

Bond Coverage: Statewide

BLM Bond File #: 585716

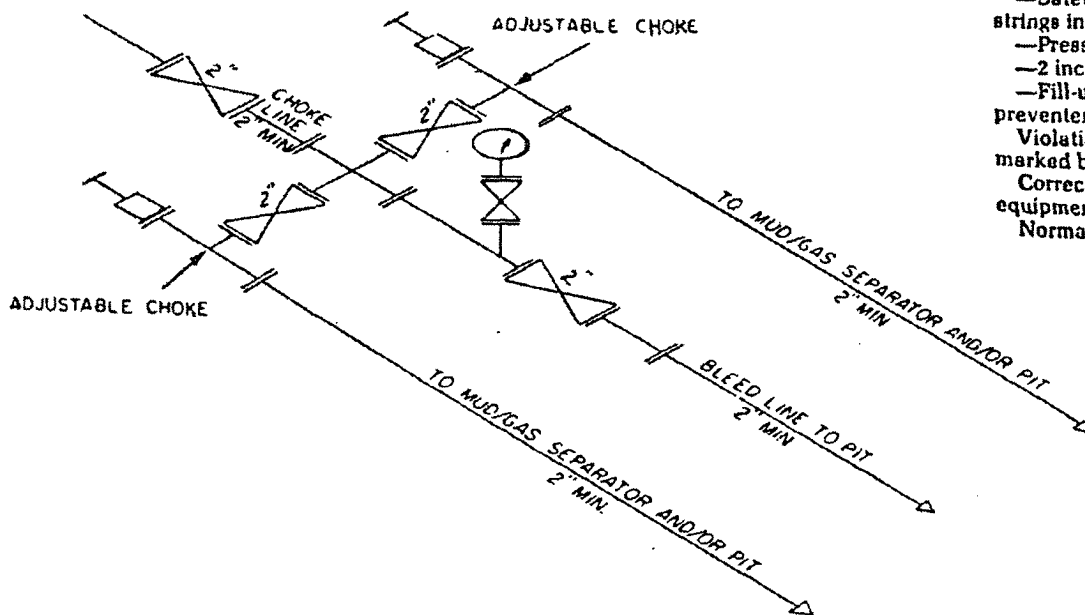
  
\_\_\_\_\_  
Melanie J. Parker  
Land Department

# BOPE SCHEMATIC



ONSHORE OIL AND GAS ORDER NO. 2

- 2M system:
- Annular preventer, or, double ram, or two rams with one being blind and one being a pipe ram \*
  - Kill line (2 inch minimum)
  - 1 kill line valve (2 inch minimum)
  - 1 choke line valve
  - 2 chokes (refer to diagram in Attachment 1)
  - Upper kelly cock valve with handle available
  - Safety valve and subs to fit all drill strings in use
  - Pressure gauge on choke manifold
  - 2 inch minimum choke line
  - Fill-up line above the uppermost preventer.
- Violation: Minor (all items unless marked by asterisk).
- Corrective Action: Install the equipment as specified.
- Normal Abatement Period: 24 hours.



2M CHOKER MANIFOLD EQUIPMENT — CONFIGURATION OF CHOKES

MAY VARY

**Exhibit One**

Form 3160-5  
(June 1990)

UNITED STATES  
DEPARTMENT OF THE INTERIOR  
BUREAU OF LAND MANAGEMENT

JUN 21 1999

FORM APPROVED  
Budget Bureau No. 1004-0135  
Expires: March 31, 1993

SUNDRY NOTICES AND REPORTS ON WELLS

Do not use this form for proposals to drill or to deepen or reentry to a different reservoir.  
Use "APPLICATION FOR PERMIT-" for such proposals

SUBMIT IN TRIPLICATE

1. Type of Well

☒ Oil Well ☐ Gas Well ☐ Other

2. Name of Operator

MARBOB ENERGY CORPORATION

3. Address and Telephone No.

P.O. BOX 227, ARTESIA, NM 88210 505-748-3303

4. Location of Well (Footage, Sec., T., R., M., or Survey Description)

T17S-R29E  
T17S-R30E  
T17S-R31E

5. Lease Designation and Serial No.

6. If Indian, Allottee or Tribe Name

7. If Unit or CA, Agreement Designation

8. Well Name and No.

9. API Well No.

10. Field and Pool, or Exploratory Area

11. County or Parish, State

EDDY CO., NM

12. CHECK APPROPRIATE BOX(s) TO INDICATE NATURE OF NOTICE, REPORT, OR OTHER DATA

TYPE OF SUBMISSION	TYPE OF ACTION	
<input type="checkbox"/> Notice of Intent	<input type="checkbox"/> Abandonment	<input type="checkbox"/> Change of Plans
<input type="checkbox"/> Subsequent Report	<input type="checkbox"/> Recompletion	<input type="checkbox"/> New Construction
<input type="checkbox"/> Final Abandonment Notice	<input type="checkbox"/> Plugging Back	<input type="checkbox"/> Non-Routine Fracturing
	<input type="checkbox"/> Casing Repair	<input type="checkbox"/> Water Shut-Off
	<input type="checkbox"/> Altering Casing	<input type="checkbox"/> Conversion to Injection
	<input checked="" type="checkbox"/> Other TEST BOPS	<input type="checkbox"/> Dispose Water

(Note: Report results of multiple completion on Well Completion or Recompletion Report and Log form.)

13. Describe Proposed or Completed Operations (Clearly state all pertinent details, and give pertinent dates, including estimated date of starting any proposed work. If well is directionally drilled, give subsurface locations and measured and true vertical depths for all markers and zones pertinent to this work.)

DUE TO THE LOW BOTTOM HOLE PRESSURE OF FORMATIONS ABOVE 6000', WE ARE REQUESTING BLANKET APPROVAL FOR WELLS IN THE ABOVE LOCATIONS TO TEST BOPS ON SURFACE CASING TO 1000#

THIS SUNDRY IS APPROVED FOR MARBOB TO HAVE A BLANKET APPROVAL FOR TESTING BOPS.

HOWEVER, THE OPERATOR WILL STATE ON EACH APD THIS APPLIES TO IN ORDER TO

REMIND AND/OR BRING NOTICE TO THE BLM OFFICE AND ENGINEER REVIEWING THE APD

THAT THE WELL'S BOPE TESTING IS COVERED BY A BLANKET APPROVAL FOR THESE LOCATIONS

14. I hereby certify that the foregoing is true and correct

Signed Robin Corcoran

Title PRODUCTION ANALYST

Date 05/25/99

(This space for Federal or State office use)

Approved by Shay

Title PETROLEUM ENGINEER

Date JUN 16 1999

Conditions of approval, if any:

Title 18 U.S.C. Section 1001, makes it a crime for any person knowingly and willfully to make to any department or agency of the United States any false, fictitious or fraudulent statements or representations as to any matter within its jurisdiction.

SEP 09 1999



United States Department of the Interior

BUREAU OF LAND MANAGEMENT

Roswell Field Office  
2909 West Second St.  
Roswell, New Mexico 88201  
[www.nm.blm.gov](http://www.nm.blm.gov)



IN REPLY REFER TO:  
NMNM-88525X  
3180 (06200)

Marbob Energy Corporation  
Attention: Johnny Gray  
P. O. Box 227  
Artesia, NM 88210

SEP 07 1999

Gentlemen:

With regard to our telephone conversation of September 2, 1999, a review of our records has found discrepancies in the casing requirements section of the conditions of approval for your APD's. As per our meeting on July 7, 1999, our office had agreed with your recommended casing procedures for shallow wells of 6000 ft. or less in T. 17 S., Rgs. 29, 30 and 31 E., NMPM. In order to correct the discrepancies, this letter states the language to be used for the conditions of approval casing requirements for all your existing APD's

Conditions of Approval-Drilling amended as follows:

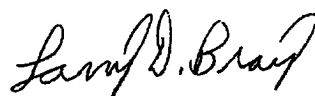
II. Casing requirements in T. 17 S., Rgs. 29, 30 and 31 E. for shallow wells less than 6,000 ft.

1. 8-5/8 inch surface casing should be set at approximately \_\_\_\_ ft. in the Rustler Anhydrite or in the case the salt occurs at a shallower depth above the top of the salt. The surface casing shoe shall be set in the anhydrite to ensure adequate sealing. The operator is required to use an excess of 100% cement volume to fill annulus. If cement does not circulate to surface the operator may then use ready mix cement to fill the remaining annulus.

2. The minimum required fill of cement behind the 5½ inch production casing is to place the top of the cement 200 ft. above the top of the uppermost hydrocarbon bearing interval or to the base of the salt.

These requirements supercede those issued in your existing, approved APD's for the shallow wells located in T. 17 S., Rgs. 29, 30 and 31 E., NMPM. If you have any question regarding this matter please call John S. Simitz at (505) 627-0288 or Armando A. Lopez at (505) 627-0248.

Sincerely,

A handwritten signature in cursive script, reading "Larry D. Bray".

Larry D. Bray  
Acting Assistant Field Office Manager,  
Lands and Minerals



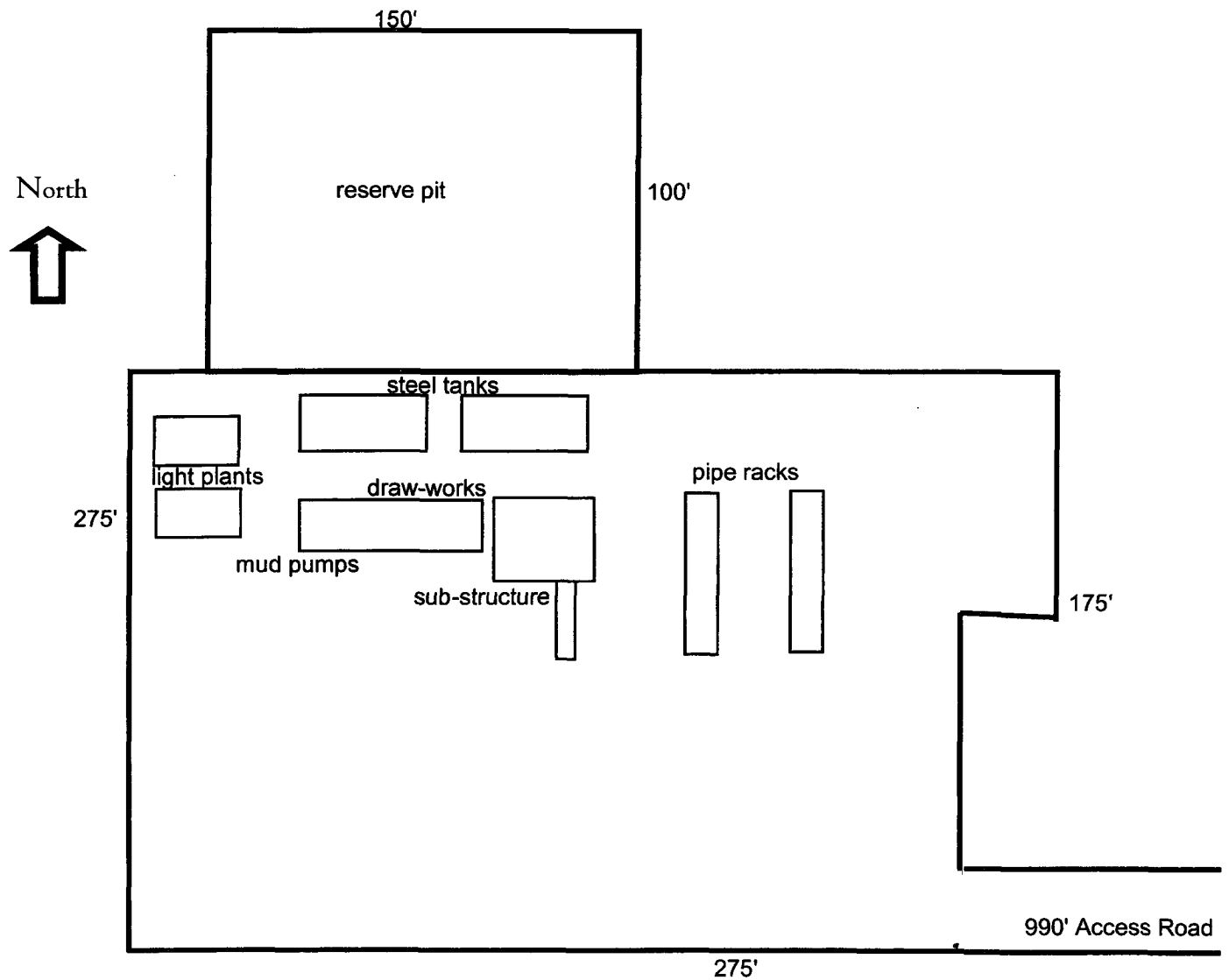
ILLINOIS, CAMP SE, N.M.  
SUP. 5'

**JOHN WEST SURVEYING  
HOBBS, NEW MEXICO  
(505) 393-3117**

**EXHIBIT TWO**



# Well Site Lay-Out Plat



Dice Roll Federal Com #1  
1980' FSL & 660' FEL  
Section 13, T20S, R29E  
Eddy County, New Mexico

EXHIBIT THREE