

DISTRICT I
1625 N. FRENCH DR., BOBBS, NM 88240

State of New Mexico
Energy, Minerals and Natural Resources Department

JUL 13 2009

DISTRICT II
1301 W. GRAND AVENUE, ARTESIA, NM 88210

OIL CONSERVATION DIVISION
1220 SOUTH ST. FRANCIS DR.
Santa Fe, New Mexico 87505

Form C-102
Revised October 12, 2005
Submit to Appropriate District Office
State Lease - 4 Copies
Fee Lease - 3 Copies

DISTRICT III
1000 Rio Brazos Rd., Aztec, NM 87410

DISTRICT IV
1220 S. ST. FRANCIS DR., SANTA FE, NM 87505

WELL LOCATION AND ACREAGE DEDICATION PLAT

X AMENDED REPORT

| | | |
|----------------------------|---|--|
| API Number 30-015-33431 | Pool Code 97354 | Pool Name Cottonwood Draw; Upper Penn (Gas) |
| Property Code | Property Name PINTAIL 23 FEDERAL COM | Well Number 1 |
| OGRID No. 162683 | Operator Name CIMAREX ENERGY CO. OF COLORADO | Elevation 3330' |

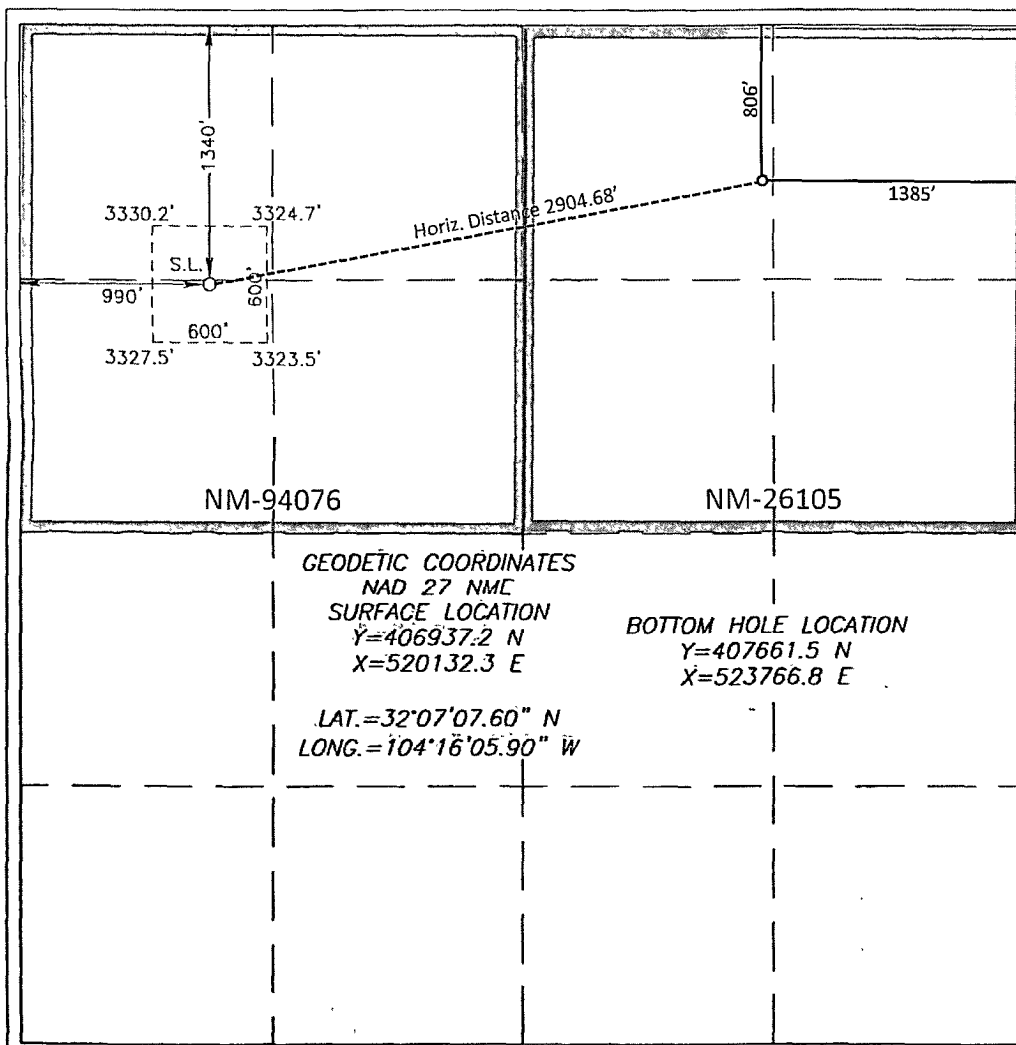
Surface Location

| UL or lot No. | Section | Township | Range | Lot Idn | Feet from the | North/South line | Feet from the | East/West line | County |
|---------------|---------|----------|-------|---------|---------------|------------------|---------------|----------------|--------|
| E | 23 | 25-S | 26-E | | 1340 | NORTH | 990 | WEST | EDDY |

Bottom Hole Location If Different From Surface

| UL or lot No. | Section | Township | Range | Lot Idn | Feet from the | North/South line | Feet from the | East/West line | County |
|------------------------|-----------------|-------------------------|-----------|---------|---------------|------------------|---------------|----------------|--------|
| B | 23 | 25-S | 26-E | | 806 | NORTH | 1385 | EAST | EDDY |
| Dedicated Acres 320 | Joint or Infill | Consolidation Code P | Order No. | | | | | | |

NO ALLOWABLE WILL BE ASSIGNED TO THIS COMPLETION UNTIL ALL INTERESTS HAVE BEEN CONSOLIDATED
OR A NON-STANDARD UNIT HAS BEEN APPROVED BY THE DIVISION



OPERATOR CERTIFICATION

I hereby certify that the information herein is true and complete to the best of my knowledge and belief, and that this organization either owns a working interest or unleased mineral interest in the land including the proposed bottom hole location or has a right to drill this well at this location pursuant to a contract with an owner of such mineral or working interest, or to a voluntary pooling agreement or a compulsory pooling order heretofore entered by the division.

Zeno Farris July 8, 2009
Signature Date

Zeno Farris
Printed Name

SURVEYOR CERTIFICATION

I hereby certify that the well location shown on this plat was plotted from field notes of actual surveys made by me or under my supervision, and that the same is true and correct to the best of my belief.

RONALD J. EIDSON
MARCH 04 2008
Date Surveyed
Signature & Seal of Professional Surveyor
Certificate No. GARY EIDSON 12641
RONALD EIDSON 3239

5215 N. O'Connor Blvd
Suite 1500
Irving, TX 75039
972-401-3111
972-443-6486

Rm
JUL 13 2009

Cimarex Energy Co. of Colorado

July 8, 2009

United States Department of the Interior
Bureau of Land Management
620 East Greene Street
Carlsbad, NM 88220
Attn: Ms. Betty Hill

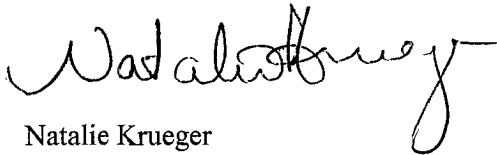
Re: Pintail 23 Federal Com No. 1 – Recomplete to Cisco
Revised C-102

Dear Ms. Hill:

Enclosed, please find a revised C-102 for this well, which was recompleted in 2008 from Morrow (dry) to Cisco.

If you need anything else, please call me at 469-420-2723.

Sincerely,



Natalie Krueger
Reg Analyst

CC: NMOCD Artesia

nkruieger@cimarex.com

.....