

DISTRICT I
1625 N. French Dr., Hobbs, NM 88240

DISTRICT II
811 South First, Artesia, NM 88210

DISTRICT III
1000 Rio Brazos Rd., Aztec, NM 87410

DISTRICT IV
2040 South Pacheco, Santa Fe, NM 87506

State of New Mexico
Energy, Minerals and Natural Resources Department

Form C-102
Revised March 17, 1999

Submit to Appropriate District Office
State Lease - 4 Copies
Fee Lease - 3 Copies

OIL CONSERVATION DIVISION

2040 South Pacheco
Santa Fe, New Mexico 87504-2088

☐ AMENDED REPORT

WELL LOCATION AND ACREAGE DEDICATION PLAT

API Number 30-015-33224	Pool Code 47545	Pool Name Nash Draw (Delaware /BS/Avalon Sand)
Property Code 001769	Property Name POKER LAKE UNIT	Well Number 183
OGRID No. 001801	Operator Name BASS ENTERPRISES PRODUCTION COMPANY	Elevation 3185'

Surface Location

UL or lot No.	Section	Township	Range	Lot Idn	Feet from the	North/South line	Feet from the	East/West line	County
C	7	24 S	30 E		330	NORTH	1980	WEST	EDDY

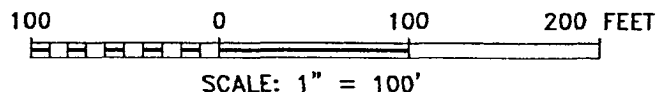
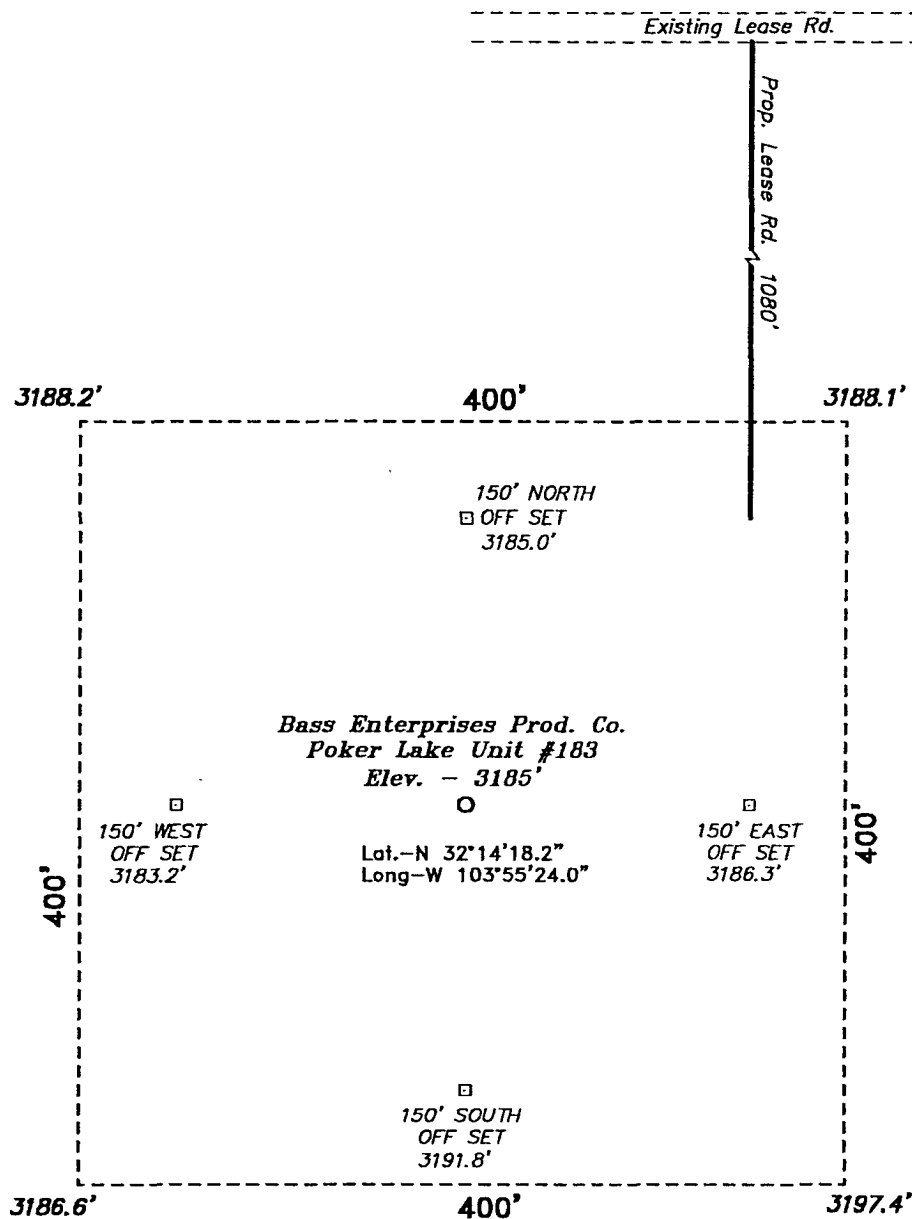
Bottom Hole Location If Different From Surface

UL or lot No.	Section	Township	Range	Lot Idn	Feet from the	North/South line	Feet from the	East/West line	County
Dedicated Acres 40	Joint or Infill N	Consolidation Code	Order No.						

NO ALLOWABLE WILL BE ASSIGNED TO THIS COMPLETION UNTIL ALL INTERESTS HAVE BEEN CONSOLIDATED
OR A NON-STANDARD UNIT HAS BEEN APPROVED BY THE DIVISION

<p>LOT 1 - 40.16 ac.</p> <p>1980'</p> <p>3188.2' 3188.1'</p> <p>3186.8' 3197.4'</p> <p>330'</p> <p>LAT - N32°14'18.2" LONG - W103°55'24.0" (NAD88)</p>	<p>OPERATOR CERTIFICATION</p> <p>I hereby certify the the information contained herein is true and complete to the best of my knowledge and belief.</p> <p><i>William R. Dannels</i> Signature William R. Dannels Printed Name Division Drilling Supt. Title 12/29/2005 Date</p> <p>SURVEYOR CERTIFICATION</p> <p>I hereby certify that the well location shown on this plat was plotted from field notes of actual surveys made by me or under my supervision, and that the same is true and correct to the best of my belief.</p> <p>May 8, 2001 Date Surveyed Signature of Gary L. Jones Professional Surveyor 7977 W.O. No. 1456 Certificate No. Gary L. Jones 7977 BASS SURVEYS</p>
<p>LOT 2 - 40.08 ac.</p>	
<p>LOT 3 - 40.00 ac.</p>	
<p>LOT 4 - 39.92 ac.</p>	

**SECTION 7, TOWNSHIP 24 SOUTH, RANGE 30 EAST, N.M.P.M.,
EDDY COUNTY, NEW MEXICO.**



DIRECTIONS TO LOCATION:

FROM THE JUNCTION OF STATE HWY 128 & CO. RD. 793, GO SOUTH AND WEST ON CO. RD. 793 APPROX. 4.5 MILES TO A LEASE ROAD; THENCE WEST ON LEASE ROAD APPROX. 0.5 MILE TO THE PROPOSED LEASE ROAD.

BASIN SURVEYS P.O. BOX 1786 - HOBBS, NEW MEXICO

W.O. Number: 1450

Drawn By: **K. GOAD**

BASS ENTERPRISES PRODUCTION CO.

REF: Poker Lake Unit No. 183 / Well Pad Topo

THE POKER LAKE UNIT No. 183 LOCATED 330' FROM
THE NORTH LINE AND 1980' FROM THE WEST LINE OF
SECTION 7, TOWNSHIP 24 SOUTH, RANGE 30 EAST,
N.M.P.M., EDDY COUNTY, NEW MEXICO.

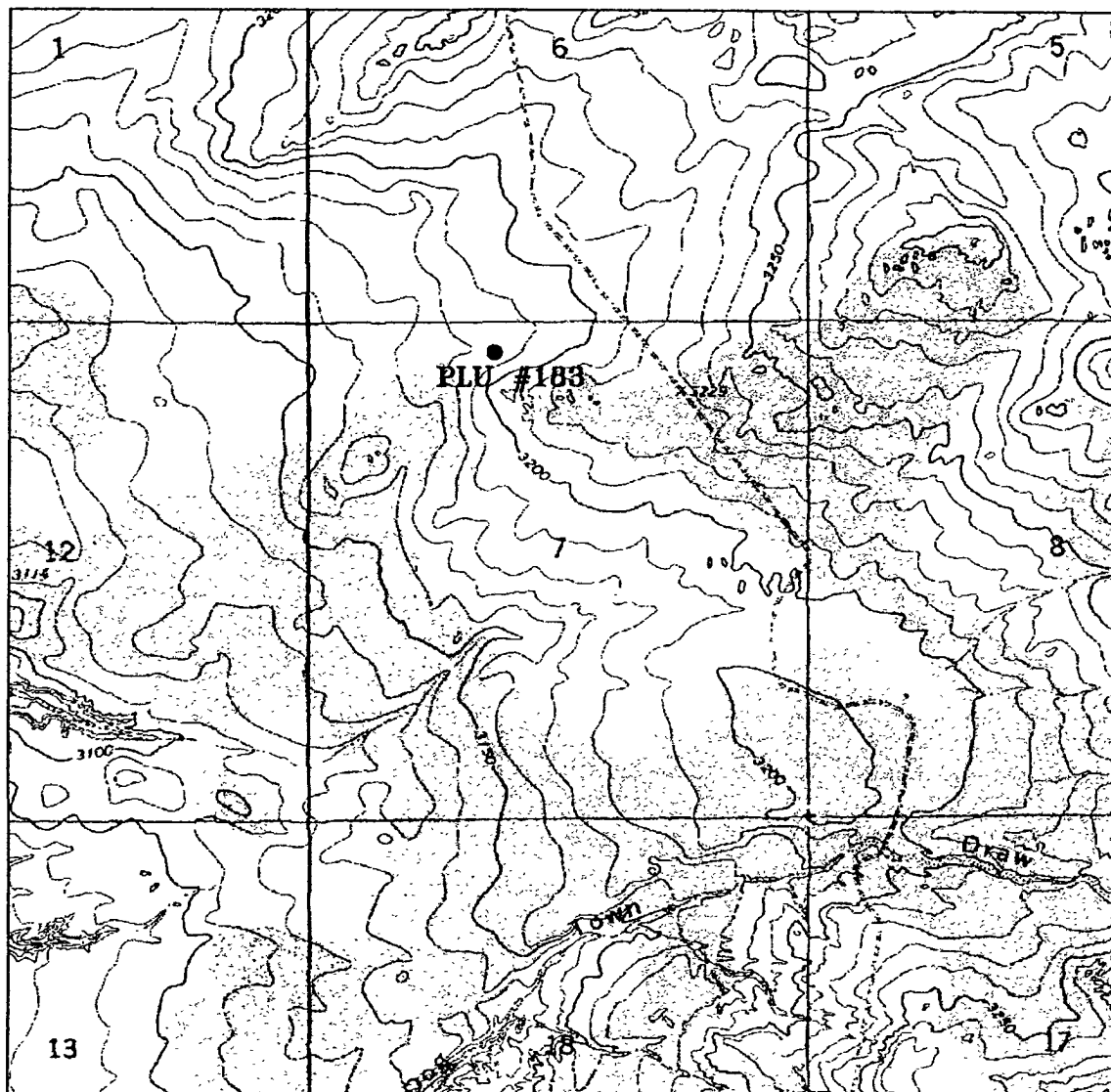
Date: 05-10-2001

Drawn: KIC CD#3

1450A DWO

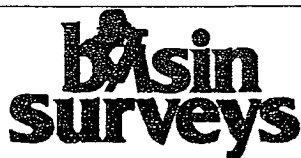
Survey Date: 05-08-2001

Sheet: 1 of 1



POKER LAKE UNIT #183

Located at 330' FNL and 1980' FWL
 Section 7, Township 24 South, Range 30 East,
 N.M.P.M., Eddy County, New Mexico.



focused on excellence
 in the oilfield

P.O. Box 1786
 1120 N. West County Rd.
 Hobbs, New Mexico 88241
 (505) 393-7316 - Office
 (505) 392-3074 - Fax
 basinsurveys.com

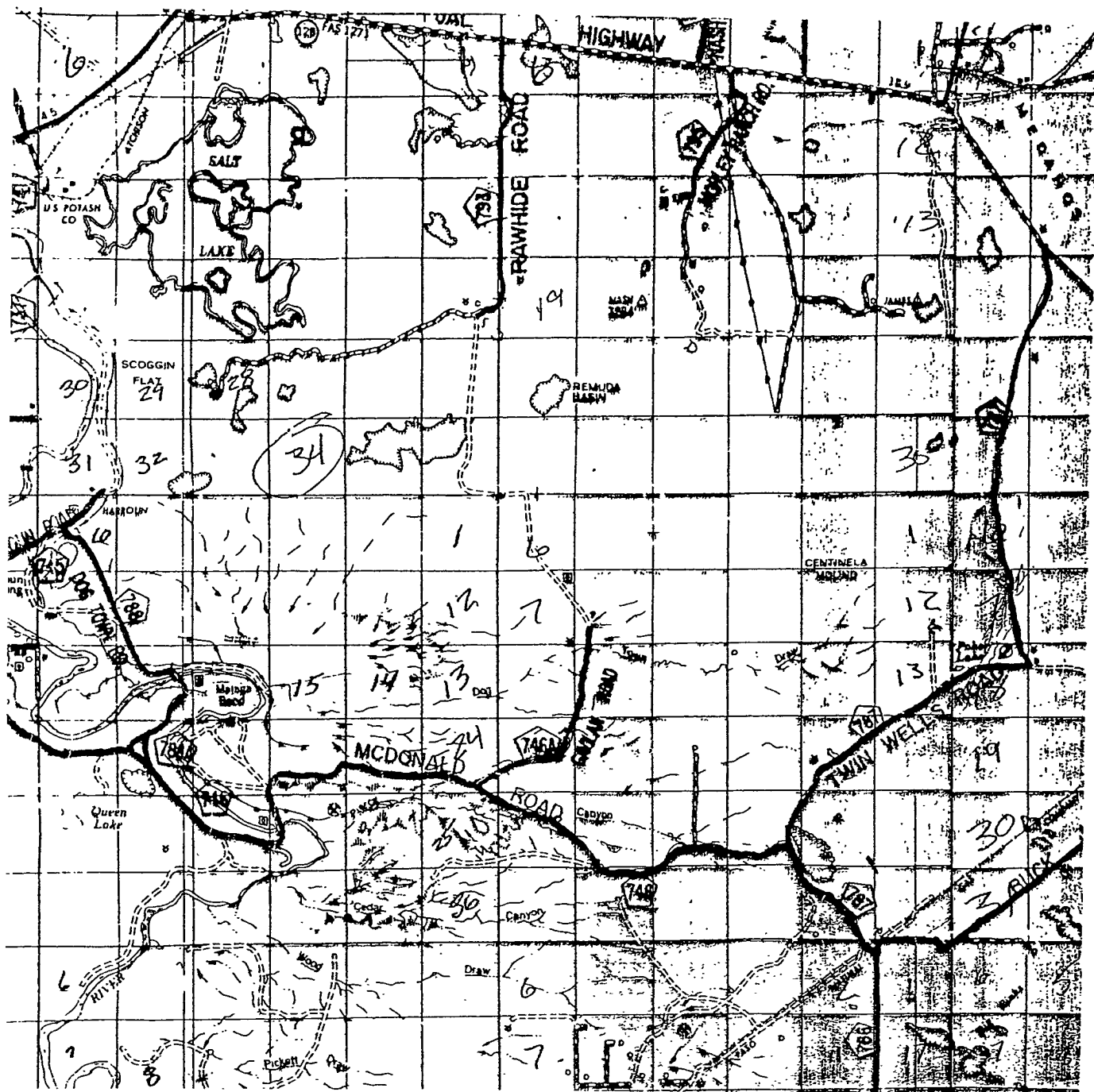
W.O. Number: 1450AA - KJG CD#3

Survey Date: 05-08-2001

Scale: 1" = 2000'

Date: 05-10-2001

**BASS ENTERPRISES
 PRODUCTION CO.**



POKER LAKE UNIT #183

Located at 330' FNL and 1980' FWL
 Section 7, Township 24 South, Range 30 East,
 N.M.P.M., Eddy County, New Mexico.

basin
surveys
 focused on excellence
 in the oilfield

P.O. Box 1786
 1120 N. West County Rd.
 Hobbs, New Mexico 88241
 (505) 393-7316 - Office
 (505) 392-3074 - Fax
 basinsurveys.com

W.O. Number: 1450AA - KJG CD#3

Survey Date: 05-08-2001

Scale: 1" = 2 MILES

Date: 05-10-2001

BASS ENTERPRISES
PRODUCTION CO.