

District I
625 N French Dr, Hobbs, NM 88240
District II
1301 W Grand Avenue, Artesia, NM 88210
District III
1000 Rio Brazos Road, Aztec, NM 87410
District IV
1220 S St Francis Dr, Santa Fe, NM 87505

State of New Mexico
Energy Minerals and Natural Resources
Department
Oil Conservation Division
1220 South St. Francis Dr.
Santa Fe, NM 87505

Form C-144 CLEZ
July 21, 2008

For closed-loop systems that only use above ground steel tanks or haul-off bins and propose to implement waste removal for closure, submit to the appropriate NMOC District Office.

Closed-Loop System Permit or Closure Plan Application

(that only use above ground steel tanks or haul-off bins and propose to implement waste removal for closure)

Type of action: ☐ Permit ☒ Closure

Instructions: Please submit one application (Form C-144 CLEZ) per individual closed-loop system request. For any application request other than for a closed-loop system that only use above ground steel tanks or haul-off bins and propose to implement waste removal for closure, please submit a Form C-144.

Please be advised that approval of this request does not relieve the operator of liability should operations result in pollution of surface water, ground water or the environment. Nor does approval relieve the operator of its responsibility to comply with any other applicable governmental authority's rules, regulations or ordinances.

Operator: **BOPCO, L.P.**

OGRID: **260737**

Address: **P.O. BOX 2760 Midland, TX 79702**

Facility or well name: **Indian Draw Deep 7 Com #3**

API Number: **30-015-36736**

OCD Permit Number:

208651

U/L or Qtr/Qtr A Section 7 Township 22S Range 28E County: **Eddy**

Center of Proposed Design: Latitude N **32.412589**

Longitude W **104.120544**

NAD: ☐ 1927 ☒ 1983

Surface Owner: ☐ Federal ☐ State ☒ Private ☐ Tribal Trust or Indian Allotment

2. ☒ **Closed-loop System:** Subsection H of 19.15.17.11 NMAC

Operation: ☒ Drilling a new well ☐ Workover or Drilling (Applies to activities which require prior approval of a permit or notice of intent) ☐ P&A

☐ Above Ground Steel Tanks or ☒ Haul-off Bins

3. **Signs:** Subsection C of 19.15.17.11 NMAC

☒ 12"x 24", 2" lettering, providing Operator's name, site location, and emergency telephone numbers

☒ Signed in compliance with 19.15.3.103 NMAC

4. **Closed-loop Systems Permit Application Attachment Checklist:** Subsection B of 19.15.17.9 NMAC

Instructions: Each of the following items must be attached to the application. Please indicate, by a check mark in the box, that the documents are attached.

☐ Design Plan - based upon the appropriate requirements of 19.15.17.11 NMAC

☐ Operating and Maintenance Plan - based upon the appropriate requirements of 19.15.17.12 NMAC

☐ Closure Plan (Please complete Box 5) - based upon the appropriate requirements of Subsection C of 19.15.17.9 NMAC and 19.15.17.13 NMAC

☐ Previously Approved Design (attach copy of design) API Number: _____

☐ Previously Approved Operating and Maintenance Plan API Number: _____

5. **Waste Removal Closure For Closed-loop Systems That Utilize Above Ground Steel Tanks or Haul-off Bins Only:** (19.15.17.13.D NMAC)

Instructions: Please identify the facility or facilities for the disposal of liquids, drilling fluids and drill cuttings. Use attachment if more than two facilities are required.

Disposal Facility Name: _____

Disposal Facility Permit Number: _____

Disposal Facility Name: _____

Disposal Facility Permit Number: _____

Will any of the proposed closed-loop system operations and associated activities occur on or in areas that will not be used for future service and operations?

☐ Yes (If yes, please provide the information below) ☐ No

Required for impacted areas which will not be used for future service and operations:

☐ Soil Backfill and Cover Design Specifications - based upon the appropriate requirements of Subsection H of 19.15.17.13 NMAC

☐ Re-vegetation Plan - based upon the appropriate requirements of Subsection I of 19.15.17.13 NMAC

☐ Site Reclamation Plan - based upon the appropriate requirements of Subsection G of 19.15.17.13 NMAC



Operator Application Certification:

I hereby certify that the information submitted with this application is true, accurate and complete to the best of my knowledge and belief.

Name (Print):

Title:

Signature:

Date:

e-mail address:

Telephone:

7. **OCD Approval:** ☐ Permit Application (including closure plan) ☒ Closure Plan (only)

OCD Representative Signature:

Approval Date:

Title:

OCD Permit Number:

Closure Report (required within 60 days of closure completion): Subsection K of 19.15.17.13 NMAC

Instructions: Operators are required to obtain an approved closure plan prior to implementing any closure activities and submitting the closure report. The closure report is required to be submitted to the division within 60 days of the completion of the closure activities. Please do not complete this section of the form until an approved closure plan has been obtained and the closure activities have been completed.

☒ Closure Completion Date: 03-11-2009

Closure Report Regarding Waste Removal Closure For Closed-loop Systems That Utilize Above Ground Steel Tanks or Haul-off Bins Only:

Instructions: Please identify the facility or facilities for where the liquids, drilling fluids and drill cuttings were disposed. Use attachment if more than two facilities were utilized.

Disposal Facility Name: Controlled Recovery, Inc

Disposal Facility Permit Number: R-9166

Disposal Facility Name:

Disposal Facility Permit Number:

Were the closed-loop system operations and associated activities performed on or in areas that will not be used for future service and operations?

☐ Yes (If yes, please demonstrate compliance to the items below) ☒ No

Required for impacted areas which will not be used for future service and operations:

☒ Site Reclamation (Photo Documentation)

☒ Soil Backfilling and Cover Installation

☒ Re-vegetation Application Rates and Seeding Technique

10.

Operator Closure Certification:

I hereby certify that the information and attachments submitted with this closure report is true, accurate and complete to the best of my knowledge and belief. I also certify that the closure complies with all applicable closure requirements and conditions specified in the approved closure plan.

Name (Print): Annette Childers

Title: Regulatory Clerk

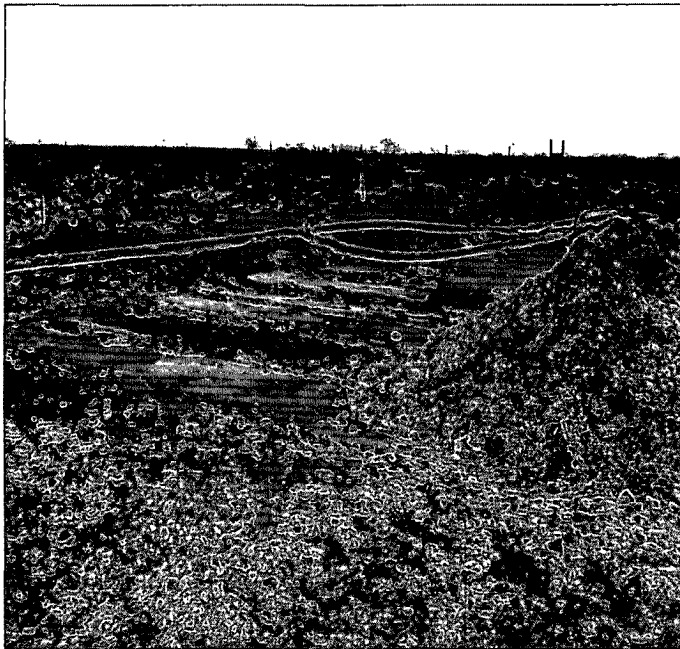
Signature:

Date:

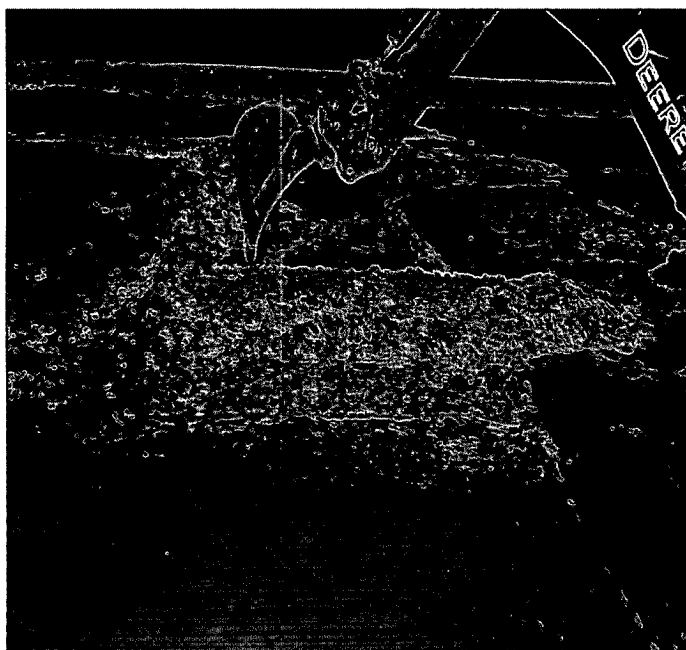
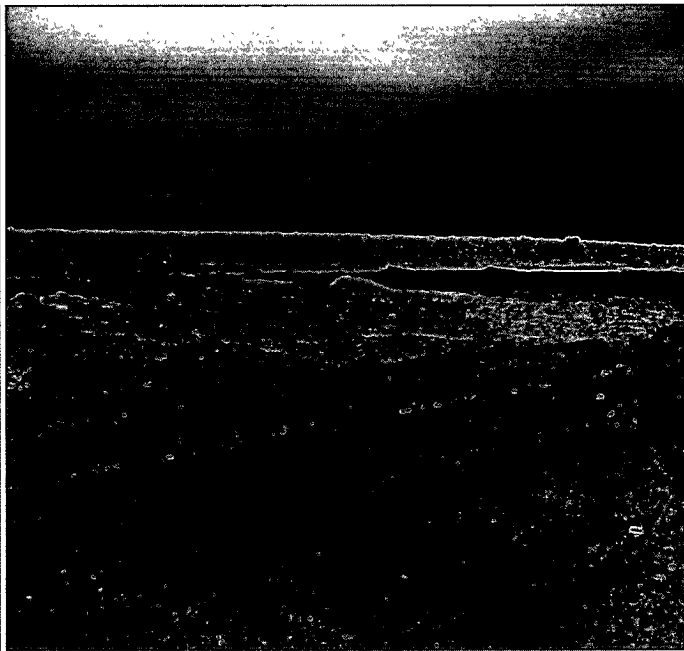
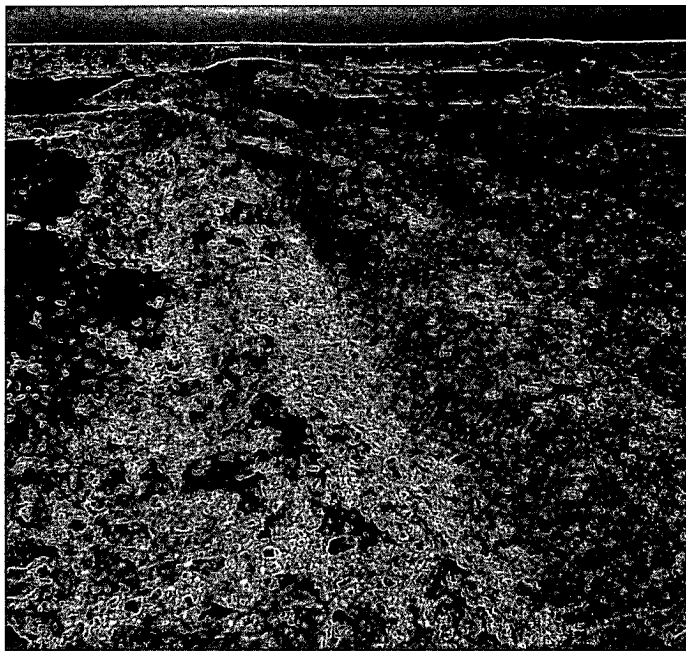
e-mail address: machilders@basspet.com

Telephone: (432) 683-2277

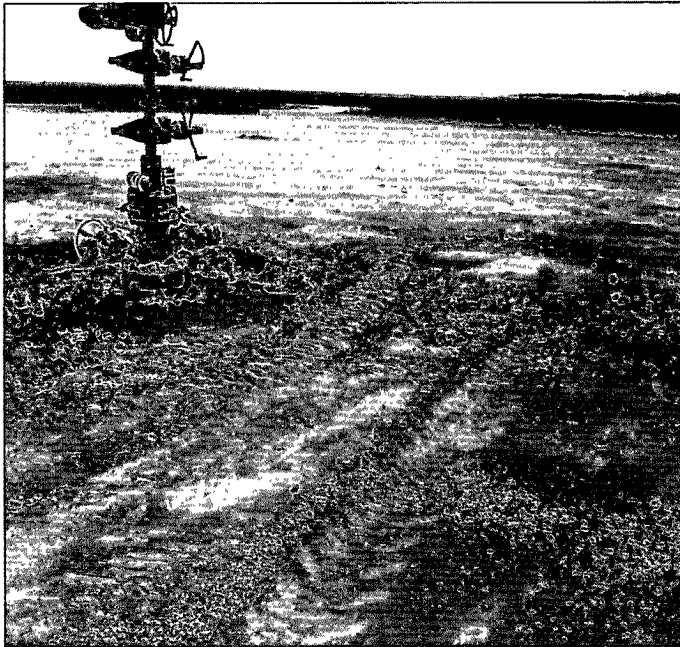
BOPCO, LP – Indian Draw Deep 7 Com #3
Site Photographs taken March 10, 2009
(p. 1 of 3)



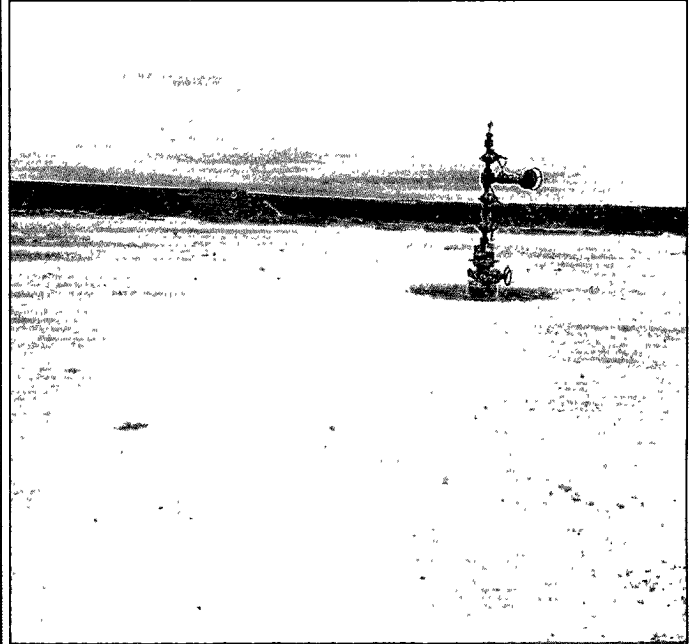
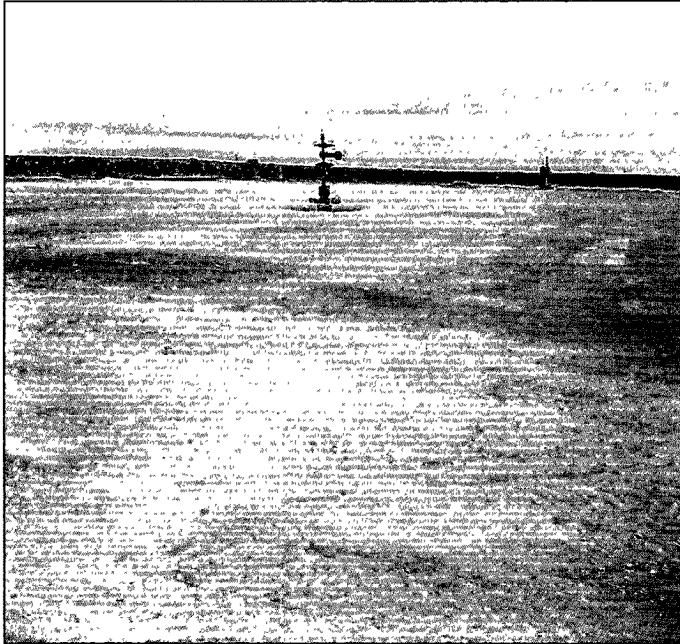
BOPCO, LP – Indian Draw Deep 7 Com #3
Site Photographs taken March 10, 2009
(p. 2 of 3)



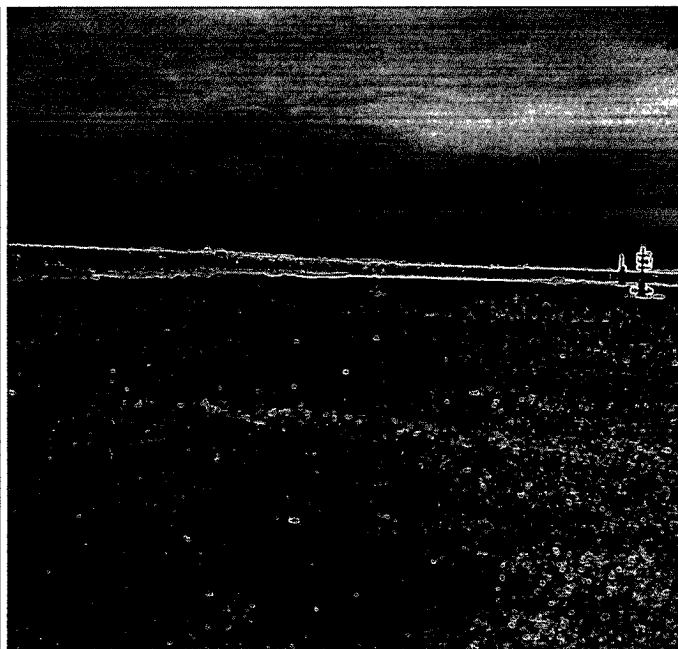
BOPCO, LP – Indian Draw Deep 7 Com #3
Site Photographs taken March 10, 2009
(p. 3 of 3)



BOPCO, LP – Indian Draw Deep 7 Com #3
Site Photographs taken March 11, 2009
(p. 1 of 2)



BOPCO, LP – Indian Draw Deep 7 Com #3
Site Photographs taken March 11, 2009
(p. 2 of 2)





SPORT ENVIRONMENTAL SERVICES, PLLC

502 N. Big Spring Street, Midland, Texas 79701

Business: 432.683.1100 Fax: 888.500.0622

August 26, 2009

Ms. Jacqui Reeves
~~Mr. Mike Bratcher~~

State of New Mexico
Oil Conservation Division
1301 W. Grand
Artesia, NM 88210

Re: **Closed-Loop System Closure Report**
BOPCO, L.P., Indian Draw Deep 7 Com #3
Section 7, T-22-S, R-28-E
Eddy County, New Mexico

Ms. Reeves
Dear ~~Mr. Bratcher~~:

On behalf of BOPCO, L.P., Sport Environmental Services is providing the enclosed "Closed-Loop System Closure Plan" report for BOPCO, L.P.'s Indian Draw Deep 7 Com #3 location.

Site closure consisted of removing visual signs of contaminated soil, and restoring the impacted area with reclaimed caliche. Visually impacted soil was excavated and disposed of off site at the NMOCD permitted and approved facility, Controlled Recovery Inc. (Permit #R-9166). Waste manifesting documentation is maintained by Roadrunner Environmental, Inc. The area was subsequently backfilled with unimpacted caliche collected from the sides of the location.

Enclosed please find documentation demonstrating that the checklist requirements set forth with the Closure Report Regarding Waste Removal Closure for Closed-loop Systems That Utilize Haul-off Bins Form C-144 CLEZ, Box 9, have been met. The closure report consists of the disposal facility name and permit number and March 10 and 11, 2009 photo documentation of before and after stained soil removal.

If you have any questions or comments with regard to this matter, please contact me at my office (432.683.1100) or on my cell (432.553.8555). I would be more than happy to review this closure report with you.

Sincerely,

Debi S. Moore

Debi Sport Moore, M.E., R.E.P.A.
President

Enclosures: Closed-Loop System Closure Report

Cc: Mr. William R. Dannels
C.K. "Buddy" Jenkins
BOPCO, L.P.
dba Bass Enterprises Production Co.
P.O. Box 2760
Midland, TX 79702