

**NEW MEXICO OIL CONSERVATION COMMISSION
WELL LOCATION AND ACREAGE DEDICATION**

OCT 05 2009

Form C-102
Supersedes C-128
Effective 1-1-85

All distances must be from the outer boundaries of the Section.

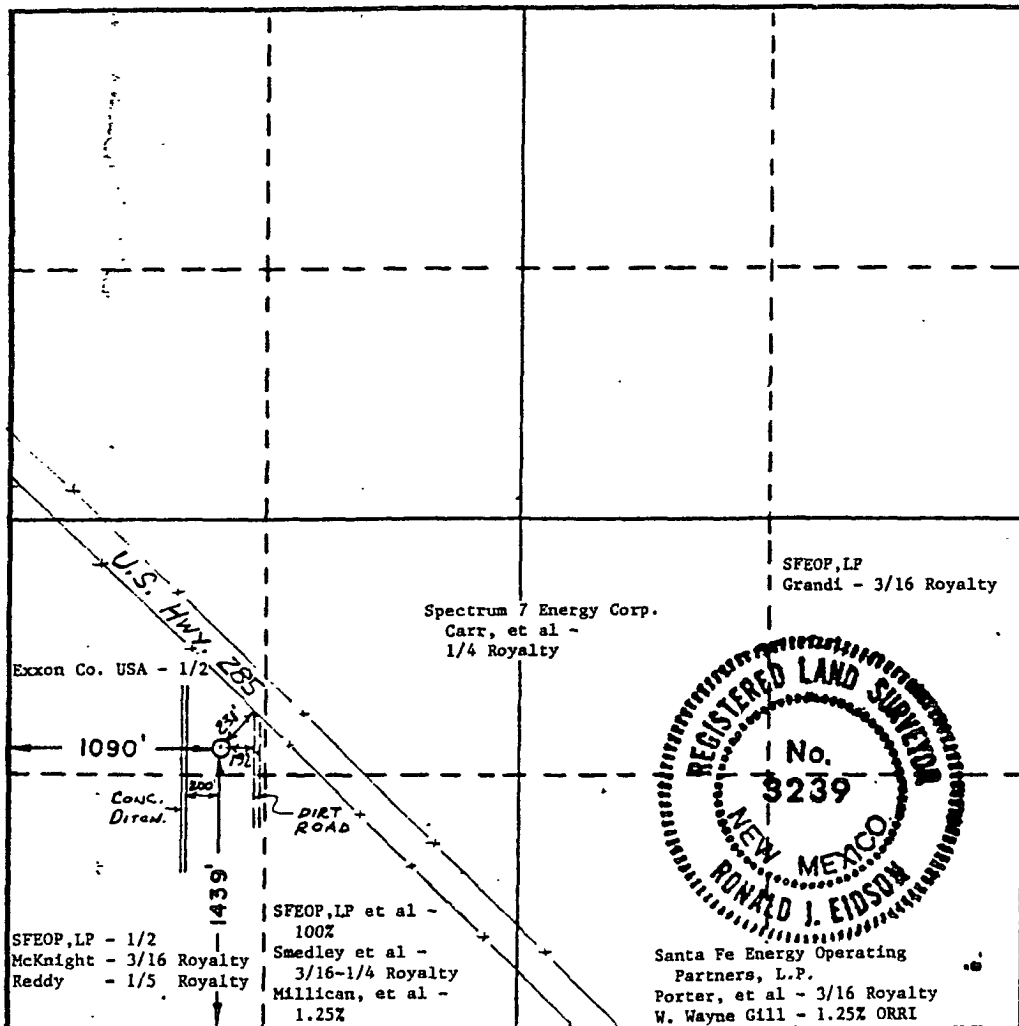
Operator Santa Fe Energy Company			Lease Lovelace		Well No. 1
Unit Letter L	Section 27	Township 22 South	Range 27 East	County Eddy	
Actual Footage Location of Well: 1439 feet from the South line and 1090 feet from the West line					
Ground Level Elev. 3115.3	Producing Formation Wolfcamp		Pool Und. Cass Draw		Dedicated Acreage: 320 Acres

1. Outline the acreage dedicated to the subject well by colored pencil or hatchure marks on the plat below.
2. If more than one lease is dedicated to the well, outline each and identify the ownership thereof (both as to working interest and royalty).
3. If more than one lease of different ownership is dedicated to the well, have the interests of all owners been consolidated by communitization, unitization, force-pooling, etc?

☒ Yes ☐ No If answer is "yes," type of consolidation Designation of Consolidated Gas
Leasehold Estate

If answer is "no," list the owners and tract descriptions which have actually been consolidated. (Use reverse side of this form if necessary.) _____

No allowable will be assigned to the well until all interests have been consolidated (by communitization, unitization, forced-pooling, or otherwise) or until a non-standard unit, eliminating such interests, has been approved by the Commission.



CERTIFICATION

I hereby certify that the information contained herein is true and complete to the best of my knowledge and belief.

Michael R. Burton

Name **Michael R. Burton**

Position **District Drilling Engineer**

Company **Santa Fe Energy Operating Partners, L.P.**

Date **August 10, 1989**

I hereby certify that the well location shown on this plat was plotted from field notes of actual surveys made by me or under my supervision, and that the same is true and correct to the best of my knowledge and belief.

Date Surveyed **August 2, 1984**

Registered Professional Engineer and/or Land Surveyor

Ronald J. Eidson

Certificate No. **JOHN W. WEST 876**
PATRICK A. ROMERO 6863
Ronald J. Eidson 3239