

EM

District I  
1625 N. French Dr., Hobbs, NM 88240  
District II  
1301 W. Grand Avenue, Artesia, NM 88210  
District III  
1000 Rio Brazos Rd., Aztec, NM 87410  
District IV  
1220 S. St. Francis Dr., Santa Fe, NM 87505

State of New Mexico  
Energy, Minerals & Natural Resources Department  
OIL CONSERVATION DIVISION  
1220 South St. Francis Dr.  
Santa Fe, NM 87505

**RECEIVED**  
DEC 15 2009  
CD ARTESIA

Form C-102  
Revised October 12, 2005  
Submit to Appropriate District Office  
State Lease-4 Copies  
Fee Lease-3 Copies

AMENDED REPORT

**WELL LOCATION AND ACREAGE DEDICATION PLAT**

|                            |   |  |
|----------------------------|---|--|
| API Number<br>30-015-37316 | Pool Code<br>39513                          | Pool Name<br>Loco Hills; Bone Spring, East |
| Property Code<br>37867     | Property Name<br><b>SAND TANK 4 FED.</b>    | Well Number<br><b>1H</b>                   |
| OGRID No.<br>7377          | Operator Name<br><b>EOG RESOURCES, INC.</b> | Elevation<br><b>3539.8'</b>                |

**Surface Location**

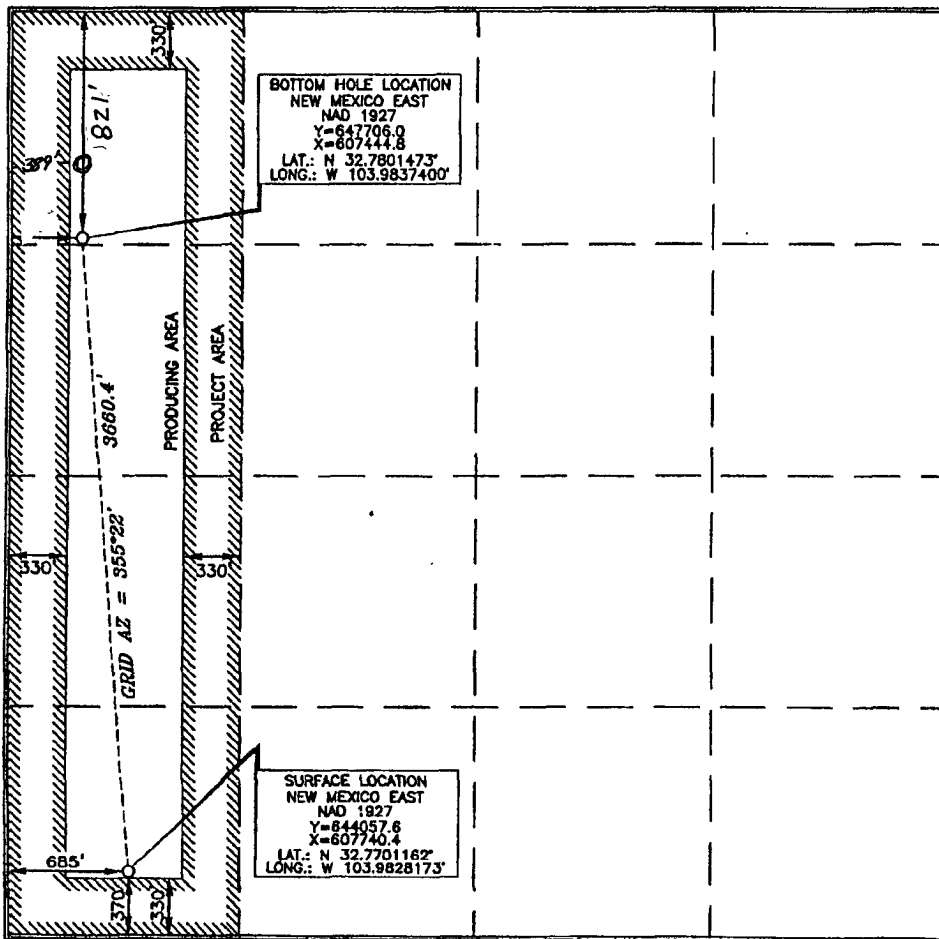
| UL or lot no. | Section | Township | Range             | Lot Idn | Feet from the | North/South line | Feet from the | East/West line | County |
|---------------|---------|----------|-------------------|---------|---------------|------------------|---------------|----------------|--------|
| M             | 4       | 18 SOUTH | 30 EAST, N.M.P.M. |         | 370           | SOUTH            | 685           | WEST           | EDDY   |

**Bottom Hole Location if Different From Surface**

| UL or lot no. | Section | Township | Range             | Lot Idn | Feet from the | North/South line | Feet from the | East/West line | County |
|---------------|---------|----------|-------------------|---------|---------------|------------------|---------------|----------------|--------|
| D             | 4       | 18 SOUTH | 30 EAST, N.M.P.M. |         | 821           | NORTH            | 389           | WEST           | EDDY   |

|                        |                 |                    |           |
|------------------------|-----------------|--------------------|-----------|
| Dedicated Acres<br>160 | Joint or Infill | Consolidation Code | Order No. |
|------------------------|-----------------|--------------------|-----------|

No allowable will be assigned to this completion until all interests have been consolidated or a non-standard unit has been approved by the division.



**OPERATOR CERTIFICATION**

I hereby certify that the information contained herein is true and complete to the best of my knowledge and belief, and that this organization either owns a working interest or unleased mineral interest in the land including the proposed bottom hole location or has a right to drill this well at this location pursuant to a contract with an owner of such a mineral or working interest, or to a voluntary pooling agreement or a compulsory pooling order heretofore entered by the division.

*Stan Wagner* 12/9/09  
Signature Date

Stan Wagner  
Printed Name

**SURVEYOR CERTIFICATION**

I hereby certify that the well location shown on this plat was located from field notes of actual survey made by me or under my supervision, and that the same is true and correct to the best of my belief.

Date of Survey: JUNE 22, 2009

Signature of Professional Surveyor: *Jerry J. Paul* 7/2/2009

Certificate Number: 15079

Professional Land Surveyor Seal: 15079, JUNE 22, 2009

WO# 090827WL-b (XA)