

30 015 37451

MD

A Gyrodata Directional Survey

Field Copy Only, not definitive

for

MEWBOURNE OIL

Location: PATTERSON #45, EDDY COUNTY, NEW MEXICO

Lease: EDDY COUNTY, NEW MEXICO

Well: PARKWAY 26 STATE COM #2H, 4-1/2" DRILLPIPE

Job Number: MD0110GW111

Run Date: 1/18/2010 10:33:02 PM

Surveyor: HENRY DREW

Calculation Method: MINIMUM CURVATURE

Survey surface coordinates obtained from: Directional Drilling Company

Survey Latitude: 32.637000 deg. N Longitude: 104.052333 deg. W

Azimuth Correction:

Gyro: -0.15000 deg to Grid North

Proposed Well Direction: 86.310 deg

Vertical Section Calculated from Well Head Location

Closure Calculated from Well Head Location

Horizontal Coordinates Calculated from Well Head Location

A Gyrodata Directional Survey

MEWBOURNE OIL

Location: PATTERSON #45, EDDY COUNTY, NEW MEXICO

Lease: EDDY COUNTY, NEW MEXICO Well: PARKWAY 26 STATE COM #2H, 4-1/2" DRILLPIPE

Job Number: MD0110GW111

MEASURED DEPTH feet	I N C L deg.	AZIMUTH deg.	VERTICAL SECTION feet	DOGLEG SEVERITY deg./ 100 ft.	VERTICAL DEPTH feet	CLOSURE DIST. AZIMUTH feet deg.	HORIZONTAL COORDINATES feet
0.00	0.00	0.00	0.0	0.00	0.00	0.0 0.0	0.00 N 0.00 E
-----							
0 - 7325 ft. RATE GYROSCOPIC CONTINUOUS MULTISHOT SURVEY RUN INSIDE 4-1/2" DRILLPIPE							
ALL MEASURED DEPTHS AND COORDINATES REFERENCED TO PATTERSON DRILLING RIG NO. 45							
-----							
100.60	0.49	194.69	-0.1	0.49	100.60	0.4 194.7	0.42 S 0.11 W
200.60	0.70	172.06	-0.2	0.31	200.59	1.4 185.3	1.44 S 0.13 W
300.60	0.94	104.41	0.6	0.94	300.59	2.4 161.6	2.25 S 0.75 E
400.60	1.07	99.39	2.3	0.15	400.57	3.6 136.6	2.61 S 2.47 E
500.60	1.03	98.04	4.1	0.04	500.55	5.2 124.0	2.89 S 4.28 E
600.60	1.03	93.91	5.9	0.07	600.54	6.8 116.8	3.07 S 6.07 E
700.60	1.14	76.76	7.7	0.34	700.52	8.4 110.1	2.91 S 7.93 E
800.60	1.66	44.67	9.8	0.92	800.49	10.1 99.5	1.65 S 9.91 E
900.60	2.36	46.50	12.4	0.70	900.43	12.4 86.3	0.79 N 12.42 E
1000.60	2.42	46.60	15.7	0.07	1000.34	15.9 76.7	3.66 N 15.45 E
1100.60	2.98	55.26	19.5	0.69	1100.23	20.2 71.0	6.59 N 19.12 E
1200.60	2.98	56.81	24.0	0.08	1200.10	25.3 67.9	9.49 N 23.42 E
1300.60	2.68	56.09	28.3	0.30	1299.97	30.1 66.1	12.22 N 27.53 E
1400.60	1.94	57.74	31.8	0.74	1399.89	34.1 65.0	14.42 N 30.91 E
1500.60	0.97	72.19	34.1	1.03	1499.86	36.6 64.8	15.59 N 33.15 E
1600.60	0.58	121.32	35.3	0.74	1599.85	37.8 65.6	15.59 N 34.39 E
1700.60	0.63	154.92	35.9	0.35	1699.84	38.1 67.1	14.82 N 35.06 E

A Gyrodata Directional Survey

MEWBOURNE OIL

Location: PATTERSON #45, EDDY COUNTY, NEW MEXICO

Lease: EDDY COUNTY, NEW MEXICO Well: PARKWAY 26 STATE COM #2H, 4-1/2" DRILLPIPE

Job Number: MD0110GW111

MEASURED DEPTH feet	I N C L deg.	AZIMUTH deg.	VERTICAL SECTION feet	DOGLEG SEVERITY deg./ 100 ft.	VERTICAL DEPTH feet	CLOSURE DIST. AZIMUTH feet deg.	HORIZONTAL COORDINATES feet
1800.60	0.53	167.34	36.2	0.16	1799.84	38.0 68.6	13.87 N 35.39 E
1900.60	0.62	189.14	36.2	0.24	1899.83	37.7 70.0	12.88 N 35.41 E
2000.60	0.71	198.22	35.8	0.14	1999.83	37.0 71.5	11.75 N 35.13 E
2100.60	0.84	208.49	35.2	0.19	2099.82	36.1 73.1	10.52 N 34.58 E
2200.60	0.89	216.27	34.3	0.13	2199.81	35.0 74.7	9.25 N 33.77 E
2300.60	0.83	226.83	33.2	0.17	2299.80	33.8 76.1	8.13 N 32.79 E
2400.60	0.87	232.07	32.0	0.09	2399.79	32.5 77.2	7.16 N 31.66 E
2500.60	1.22	248.55	30.4	0.46	2499.77	30.7 78.2	6.31 N 30.06 E
2600.60	1.29	244.66	28.4	0.11	2599.74	28.6 79.0	5.43 N 28.06 E
2700.60	1.30	248.19	26.2	0.08	2699.72	26.4 80.1	4.53 N 25.99 E
2800.60	1.21	244.32	24.2	0.12	2799.70	24.3 81.3	3.65 N 23.98 E
2900.60	1.07	246.27	22.3	0.15	2899.68	22.3 82.8	2.81 N 22.17 E
3000.60	1.15	248.69	20.5	0.09	2999.66	20.5 84.2	2.07 N 20.37 E
3100.60	1.12	243.35	18.6	0.11	3099.64	18.6 86.1	1.27 N 18.56 E
3200.60	1.04	234.54	16.9	0.19	3199.62	16.9 89.0	0.30 N 16.95 E
3300.60	0.83	246.02	15.5	0.28	3299.61	15.6 91.9	0.52 S 15.54 E
3400.60	0.81	259.31	14.1	0.19	3399.60	14.2 93.8	0.95 S 14.18 E
3500.60	0.93	280.58	12.6	0.34	3499.58	12.7 94.2	0.93 S 12.69 E
3600.60	1.11	294.23	11.0	0.30	3599.57	11.0 92.0	0.38 S 11.02 E
3700.60	1.24	302.90	9.2	0.22	3699.55	9.2 86.3	0.60 N 9.22 E
3800.60	1.29	303.97	7.5	0.05	3799.52	7.6 76.2	1.82 N 7.38 E
3900.60	1.50	313.27	5.7	0.31	3899.49	6.4 58.6	3.35 N 5.49 E

A Gyrodata Directional Survey

MEWBOURNE OIL

Location: PATTERSON #45, EDDY COUNTY, NEW MEXICO

Lease: EDDY COUNTY, NEW MEXICO Well: PARKWAY 26 STATE COM #2H, 4-1/2" DRILLPIPE

Job Number: MD0110GW111

MEASURED DEPTH feet	I N C L deg.	AZIMUTH deg.	VERTICAL SECTION feet	DOGLEG SEVERITY deg./ 100 ft.	VERTICAL DEPTH feet	CLOSURE DIST. AZIMUTH feet deg.	HORIZONTAL COORDINATES feet
4000.60	1.56	310.97	3.8	0.08	3999.46	6.2 34.3	5.14 N 3.51 E
4100.60	1.64	317.98	2.0	0.21	4099.42	7.3 12.1	7.09 N 1.52 E
4200.60	1.68	323.02	0.3	0.15	4199.38	9.3 358.1	9.33 N 0.32 W
4300.60	1.74	326.87	-1.3	0.13	4299.33	11.9 350.2	11.77 N 2.03 W
4400.60	1.89	335.46	-2.6	0.31	4399.28	15.0 346.3	14.54 N 3.54 W
4500.60	2.11	337.09	-3.8	0.22	4499.22	18.4 344.4	17.73 N 4.94 W
4600.60	1.89	341.61	-4.8	0.27	4599.16	21.9 343.6	20.99 N 6.18 W
4700.60	1.92	339.10	-5.7	0.09	4699.11	25.2 343.2	24.12 N 7.29 W
4800.60	1.89	335.17	-6.8	0.14	4799.05	28.5 342.5	27.18 N 8.58 W
4900.60	1.76	335.91	-8.0	0.13	4899.00	31.7 341.8	30.08 N 9.90 W
5000.60	1.59	332.02	-9.1	0.21	4998.96	34.6 341.1	32.70 N 11.18 W
5100.60	1.38	322.48	-10.3	0.32	5098.92	37.1 340.2	34.87 N 12.56 W
5200.60	1.67	305.44	-12.1	0.54	5198.89	39.4 338.5	36.67 N 14.48 W
5300.60	1.99	297.87	-14.7	0.40	5298.84	42.0 335.8	38.33 N 17.20 W
5400.60	2.18	298.96	-17.8	0.20	5398.77	45.0 333.0	40.06 N 20.40 W
5500.60	2.40	295.69	-21.2	0.25	5498.69	48.3 330.2	41.89 N 23.95 W
5600.60	2.83	297.42	-25.1	0.44	5598.59	52.1 327.5	43.93 N 28.03 W
5700.60	2.70	297.85	-29.3	0.14	5698.47	56.3 325.0	46.17 N 32.30 W
5800.60	2.31	291.21	-33.1	0.48	5798.38	60.1 322.9	47.99 N 36.25 W
5900.60	2.27	287.18	-36.8	0.16	5898.30	63.5 320.9	49.30 N 40.02 W
6000.60	2.22	289.90	-40.4	0.12	5998.22	66.8 319.1	50.55 N 43.73 W

A Gyrodata Directional Survey

MEWBOURNE OIL

Location: PATTERSON #45, EDDY COUNTY, NEW MEXICO

Lease: EDDY COUNTY, NEW MEXICO Well: PARKWAY 26 STATE COM #2H, 4-1/2" DRILLPIPE

Job Number: MD0110GW111

MEASURED DEPTH feet	I N C L deg.	AZIMUTH deg.	VERTICAL SECTION feet	DOGLEG SEVERITY deg./ 100 ft.	VERTICAL DEPTH feet	CLOSURE DIST. AZIMUTH feet deg.	HORIZONTAL COORDINATES feet
6100.60	1.71	315.55	-43.1	1.00	6098.16	70.0 318.3	52.27 N 46.60 W
6200.60	1.81	357.61	-44.1	1.27	6198.12	72.7 319.0	54.92 N 47.71 W
6300.60	1.89	10.10	-43.6	0.41	6298.07	75.1 320.8	58.13 N 47.48 W
6400.60	1.96	351.68	-43.4	0.62	6398.01	77.6 322.3	61.45 N 47.44 W
6500.60	2.20	348.18	-43.8	0.27	6497.95	80.9 323.5	65.03 N 48.08 W
6600.60	2.38	348.76	-44.3	0.18	6597.87	84.5 324.7	68.95 N 48.88 W
6700.60	2.74	347.05	-45.0	0.36	6697.77	88.6 325.8	73.31 N 49.82 W
6800.60	3.05	341.98	-46.0	0.40	6797.64	93.4 326.8	78.16 N 51.18 W
6900.60	3.26	343.40	-47.3	0.22	6897.49	98.7 327.7	83.41 N 52.81 W
7000.60	3.40	338.57	-48.9	0.31	6997.32	104.4 328.4	88.89 N 54.71 W
7100.60	2.75	334.23	-50.7	0.69	7097.17	109.7 328.8	93.81 N 56.83 W
7200.60	2.34	330.02	-52.5	0.45	7197.08	114.1 328.9	97.74 N 58.89 W
7300.60	1.86	326.74	-54.2	0.50	7297.01	117.8 328.9	100.86 N 60.80 W
7325.10	1.72	325.89	-54.6	0.57	7321.50	118.5 328.9	101.49 N 61.23 W

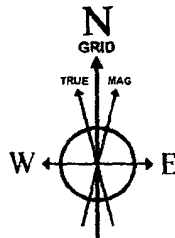
Final Station Closure: Distance: 118.53 ft Az: 328.90 deg.

# Mewbourne Oil Company

Location: Eddy County, NM  
 Field: (Parkway) Sec 26, T19S, R29E  
 Facility: Parkway 26 State Corn No. 2H

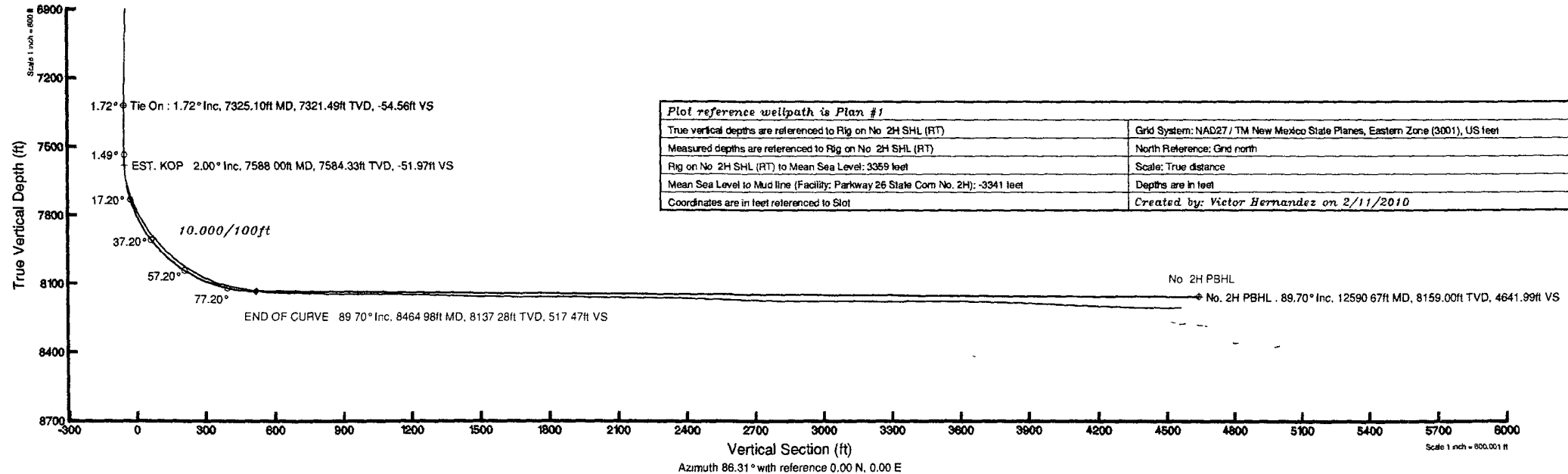
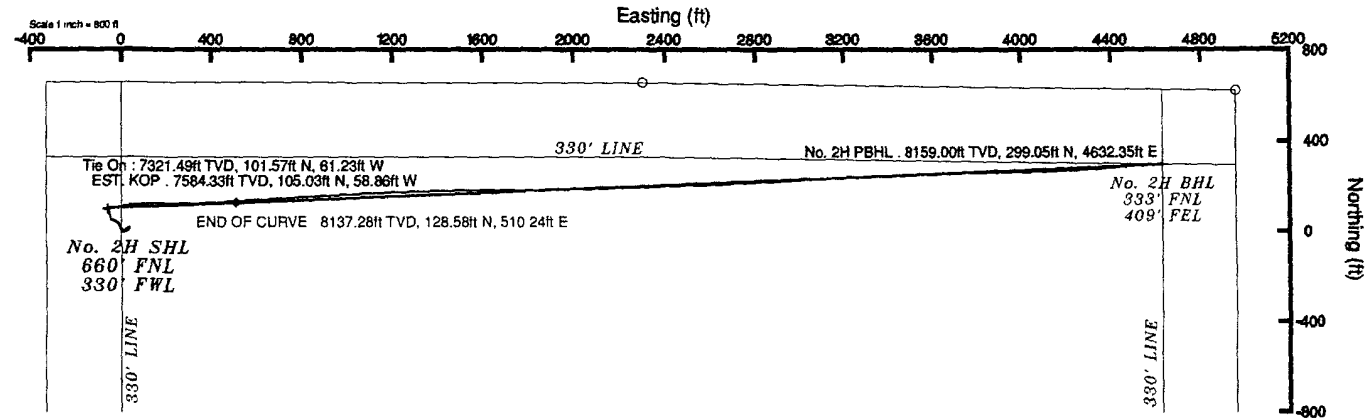
Slot: No. 2H SHL  
 Well: No. 2H  
 Wellbore: No. 2H PWB

Well Profile Data								
Design Comment	MD (ft)	Inc (°)	Az (°)	TVD (ft)	Local N (ft)	Local E (ft)	DLS (%/100ft)	VS (ft)
Tie On	7325.10	1.720	325.890	7321.49	101.57	-61.23	0.00	-54.56
EST. KOP	7588.00	2.000	87.600	7584.33	105.03	-58.86	1.24	-51.97
END OF CURVE	8464.98	89.698	87.632	8137.28	128.58	510.24	10.00	517.47
No. 2H PBHL	12590.67	89.698	87.632	8159.00	299.05	4632.35	0.00	4641.99



BGGM (1945.0 to 2011.0) Dip: 60.54° Field: 49028.8 nT  
 Magnetic North is 8.08 degrees East of True North (at 11/6/2009)  
 Grid North is 0.15 degrees East of True North  
 To correct azimuth from True to Grid subtract 0.15 degrees  
 To correct azimuth from Magnetic to Grid add 7.93 degrees

For example: if the Magnetic North Azimuth = 90 degs, then the Grid North Azimuth = 90 + 7.93 = 97.93



Plot reference wellpath is Plan #1	
True vertical depths are referenced to Rig on No. 2H SHL (RT)	Grid System: NAD27 / TM New Mexico State Planes, Eastern Zone (3001), US feet
Measured depths are referenced to Rig on No. 2H SHL (RT)	North Reference: Grid north
Rig on No. 2H SHL (RT) to Mean Sea Level: 3359 feet	Scale: True distance
Mean Sea Level to Mud line (Facility: Parkway 26 State Corn No. 2H): -3341 feet	Depths are in feet
Coordinates are in feet referenced to Slot	Created by: Victor Hernandez on 2/11/2010

# Actual Wellpath Report

No. 2H AWP

Page 1 of 10



INTEQ

REFERENCE WELLPATH IDENTIFICATION			
Operator	Mewbourne Oil Company	Slot	No. 2H SHL
Area	Eddy County, NM	Well	No. 2H
Field	(Parkway) Sec 26, T19S, R29E	Wellbore	No. 2H AWB
Facility	Parkway 26 State Com No. 2H		

REPORT SETUP INFORMATION			
Projection System	NAD27 / TM New Mexico State Planes, Eastern Zone (3001), US feet	Software System	WellArchitect® 2.0
North Reference	Grid	User	Victor Hernandez
Scale	0.999918	Report Generated	2/11/2010 at 9:04:44 AM
Convergence at slot	0.15° East	Database/Source file	WA_Midland/No._2H_AWB.xml

WELLPATH LOCATION						
	Local coordinates		Grid coordinates		Geographic coordinates	
	North[ft]	East[ft]	Easting[USft]	Northing[USft]	Latitude	Longitude
Slot Location	0.00	0.00	586432.04	595567.34	32°38'13.212"N	104°03'09.207"W
Facility Reference Pt			586432.04	595567.34	32°38'13.212"N	104°03'09.207"W
Field Reference Pt			586432.04	595567.34	32°38'13.212"N	104°03'09.207"W

WELLPATH DATUM			
Calculation method	Minimum curvature	Rig on No. 2H SHL (RT) to Facility Vertical Datum	18.00ft
Horizontal Reference Pt	Slot	Rig on No. 2H SHL (RT) to Mean Sea Level	3359.00ft
Vertical Reference Pt	Rig on No. 2H SHL (RT)	Facility Vertical Datum to Mud Line (Facility)	0.00ft
MD Reference Pt	Rig on No. 2H SHL (RT)	Section Origin	N 0.00, E 0.00 ft
Field Vertical Reference	Mean Sea Level	Section Azimuth	86.31°

# Actual Wellpath Report

No. 2H AWP

Page 2 of 10



INTEQ

REFERENCE WELLPATH IDENTIFICATION			
Operator	Mewbourne Oil Company	Slot	No. 2H SHL
Area	Eddy County, NM	Well	No. 2H
Field	(Parkway) Sec 26, T19S, R29E	Wellbore	No. 2H AWB
Facility	Parkway 26 State Com No. 2H		

WELLPATH DATA (235 stations)											
MD [ft]	Inclination [°]	Azimuth [°]	TVD [ft]	Vert Sect [ft]	North [ft]	East [ft]	Grid East [srv ft]	Grid North [srv ft]	Latitude	Longitude	DLS [°/100ft]
0.00	0.000	194.690	0.00	0.00	0.00	0.00	586432.04	595567.34	32°38'13.212"N	104°03'09.207"W	0.00
100.60	0.490	194.690	100.60	-0.14	-0.42	-0.11	586431.93	595566.92	32°38'13.208"N	104°03'09.209"W	0.49
200.60	0.700	172.060	200.59	-0.23	-1.43	-0.13	586431.91	595565.91	32°38'13.198"N	104°03'09.209"W	0.31
300.60	0.940	104.410	300.59	0.60	-2.24	0.75	586432.79	595565.10	32°38'13.190"N	104°03'09.199"W	0.93
400.60	1.070	99.390	400.57	2.29	-2.60	2.46	586434.50	595564.74	32°38'13.186"N	104°03'09.179"W	0.16
500.60	1.030	98.040	500.55	4.08	-2.88	4.27	586436.31	595564.46	32°38'13.183"N	104°03'09.157"W	0.05
600.60	1.030	93.910	600.54	5.85	-3.07	6.06	586438.10	595564.27	32°38'13.182"N	104°03'09.137"W	0.07
700.60	1.140	76.760	700.52	7.72	-2.90	7.92	586439.96	595564.44	32°38'13.183"N	104°03'09.115"W	0.34
800.60	1.660	44.670	800.49	9.78	-1.64	9.91	586441.95	595565.70	32°38'13.196"N	104°03'09.091"W	0.92
900.60	2.360	46.500	900.43	12.45	0.81	12.42	586444.46	595568.15	32°38'13.220"N	104°03'09.062"W	0.70
1000.60	2.420	46.600	1000.34	15.65	3.67	15.45	586447.49	595571.01	32°38'13.248"N	104°03'09.026"W	0.06
1100.60	2.980	55.260	1100.23	19.51	6.61	19.12	586451.16	595573.95	32°38'13.277"N	104°03'08.983"W	0.69
1200.60	2.980	56.810	1200.10	24.00	9.51	23.43	586455.47	595576.85	32°38'13.306"N	104°03'08.933"W	0.08
1300.60	2.680	56.090	1299.97	28.28	12.24	27.55	586459.58	595579.58	32°38'13.332"N	104°03'08.885"W	0.30
1400.60	1.940	57.740	1399.89	31.79	14.45	30.92	586462.96	595581.78	32°38'13.354"N	104°03'08.845"W	0.74
1500.60	0.970	72.190	1499.86	34.09	15.61	33.16	586465.19	595582.95	32°38'13.366"N	104°03'08.819"W	1.03
1600.60	0.580	121.320	1599.85	35.33	15.60	34.39	586466.43	595582.94	32°38'13.366"N	104°03'08.805"W	0.74
1700.60	0.630	154.920	1699.84	35.94	14.84	35.06	586467.10	595582.18	32°38'13.358"N	104°03'08.797"W	0.35
1800.60	0.530	167.340	1799.84	36.22	13.89	35.39	586467.43	595581.23	32°38'13.349"N	104°03'08.793"W	0.16
1900.60	0.620	189.140	1899.83	36.17	12.91	35.41	586467.45	595580.25	32°38'13.339"N	104°03'08.793"W	0.23
2000.60	0.710	198.220	1999.83	35.82	11.79	35.13	586467.17	595579.12	32°38'13.328"N	104°03'08.796"W	0.14
2100.60	0.840	208.490	2099.82	35.19	10.55	34.59	586466.62	595577.89	32°38'13.316"N	104°03'08.802"W	0.19
2200.60	0.890	216.270	2199.81	34.31	9.28	33.78	586465.81	595576.62	32°38'13.303"N	104°03'08.812"W	0.13
2300.60	0.830	226.830	2299.80	33.25	8.16	32.79	586464.83	595575.50	32°38'13.292"N	104°03'08.824"W	0.17
2400.60	0.870	232.070	2399.78	32.06	7.20	31.66	586463.70	595574.54	32°38'13.282"N	104°03'08.837"W	0.09
2500.60	1.220	248.550	2499.77	30.42	6.34	30.07	586462.11	595573.68	32°38'13.274"N	104°03'08.855"W	0.46
2600.60	1.290	244.660	2599.74	28.36	5.47	28.06	586460.10	595572.81	32°38'13.265"N	104°03'08.879"W	0.11
2700.60	1.300	248.190	2699.72	26.23	4.57	25.99	586458.03	595571.91	32°38'13.257"N	104°03'08.903"W	0.08
2800.60	1.210	244.320	2799.69	24.18	3.69	23.99	586456.03	595571.03	32°38'13.248"N	104°03'08.927"W	0.12
2900.60	1.070	246.270	2899.68	22.32	2.86	22.18	586454.22	595570.20	32°38'13.240"N	104°03'08.948"W	0.15



# Actual Wellpath Report

No. 2H AWP

Page 3 of 10



REFERENCE WELLPATH IDENTIFICATION			
Operator	Mewbourne Oil Company	Slot	No. 2H SHL
Area	Eddy County, NM	Well	No. 2H
Field	(Parkway) Sec 26, T19S, R29E	Wellbore	No. 2H AWB
Facility	Parkway 26 State Com No. 2H		

WELLPATH DATA (235 stations)											
MD [ft]	Inclination [°]	Azimuth [°]	TVD [ft]	Vert Sect [ft]	North [ft]	East [ft]	Grid East [srv ft]	Grid North [srv ft]	Latitude	Longitude	DLS [°/100ft]
3000.60	1.150	248.690	2999.66	20.49	2.12	20.39	586452.43	595569.46	32°38'13.232"N	104°03'08.969"W	0.09
3100.60	1.120	243.350	3099.64	18.63	1.31	18.59	586450.62	595568.65	32°38'13.225"N	104°03'08.990"W	0.11
3200.60	1.040	234.540	3199.62	16.96	0.35	16.97	586449.01	595567.69	32°38'13.215"N	104°03'09.009"W	0.18
3300.60	0.830	246.020	3299.61	15.51	-0.47	15.57	586447.61	595566.87	32°38'13.207"N	104°03'09.025"W	0.28
3400.60	0.810	259.310	3399.60	14.13	-0.90	14.22	586446.25	595566.44	32°38'13.203"N	104°03'09.041"W	0.19
3500.60	0.930	280.580	3499.58	12.64	-0.88	12.72	586444.76	595566.46	32°38'13.203"N	104°03'09.059"W	0.34
3600.60	1.110	294.230	3599.57	11.00	-0.33	11.04	586443.08	595567.01	32°38'13.208"N	104°03'09.078"W	0.30
3700.60	1.240	302.900	3699.55	9.27	0.65	9.25	586441.29	595567.99	32°38'13.218"N	104°03'09.099"W	0.22
3800.60	1.290	303.970	3799.52	7.51	1.87	7.41	586439.45	595569.21	32°38'13.230"N	104°03'09.121"W	0.06
3900.60	1.500	313.270	3899.49	5.73	3.39	5.52	586437.56	595570.73	32°38'13.245"N	104°03'09.143"W	0.31
4000.60	1.560	310.970	3999.46	3.87	5.18	3.54	586435.58	595572.52	32°38'13.263"N	104°03'09.166"W	0.09
4100.60	1.640	317.980	4099.42	2.01	7.14	1.56	586433.59	595574.48	32°38'13.283"N	104°03'09.189"W	0.21
4200.60	1.680	323.020	4199.38	0.32	9.37	-0.28	586431.76	595576.71	32°38'13.305"N	104°03'09.210"W	0.15
4300.60	1.740	326.870	4299.33	-1.23	11.82	-2.00	586430.04	595579.15	32°38'13.329"N	104°03'09.230"W	0.13
4400.60	1.890	335.460	4399.28	-2.56	14.59	-3.51	586428.53	595581.93	32°38'13.356"N	104°03'09.248"W	0.31
4500.60	2.110	337.090	4499.22	-3.76	17.78	-4.91	586427.13	595585.12	32°38'13.388"N	104°03'09.264"W	0.23
4600.60	1.890	341.610	4599.16	-4.78	21.04	-6.15	586425.89	595588.38	32°38'13.420"N	104°03'09.279"W	0.27
4700.60	1.920	339.100	4699.11	-5.69	24.17	-7.27	586424.77	595591.51	32°38'13.451"N	104°03'09.291"W	0.09
4800.60	1.890	335.170	4799.05	-6.78	27.23	-8.56	586423.48	595594.57	32°38'13.482"N	104°03'09.306"W	0.13
4900.60	1.760	335.910	4899.00	-7.91	30.13	-9.88	586422.16	595597.47	32°38'13.510"N	104°03'09.322"W	0.13
5000.60	1.590	332.020	4998.96	-9.02	32.76	-11.15	586420.89	595600.10	32°38'13.536"N	104°03'09.337"W	0.20
5100.60	1.380	322.480	5098.92	-10.26	34.94	-12.54	586419.50	595602.28	32°38'13.558"N	104°03'09.353"W	0.32
5200.60	1.670	305.440	5198.89	-12.06	36.74	-14.46	586417.58	595604.08	32°38'13.576"N	104°03'09.375"W	0.54
5300.60	1.990	297.870	5298.84	-14.67	38.40	-17.18	586414.86	595605.73	32°38'13.592"N	104°03'09.407"W	0.40
5400.60	2.180	298.960	5398.77	-17.75	40.13	-20.38	586411.66	595607.47	32°38'13.610"N	104°03'09.444"W	0.19
5500.60	2.400	295.690	5498.69	-21.18	41.96	-23.93	586408.11	595609.29	32°38'13.628"N	104°03'09.486"W	0.26
5600.60	2.830	297.420	5598.59	-25.12	44.00	-28.01	586404.03	595611.34	32°38'13.648"N	104°03'09.533"W	0.44
5700.60	2.700	297.850	5698.47	-29.24	46.24	-32.28	586399.76	595613.58	32°38'13.670"N	104°03'09.583"W	0.13
5800.60	2.310	291.210	5798.37	-33.07	48.07	-36.24	586395.80	595615.40	32°38'13.689"N	104°03'09.630"W	0.49
5900.60	2.270	287.180	5898.30	-36.75	49.38	-40.02	586392.03	595616.72	32°38'13.702"N	104°03'09.674"W	0.17

# Actual Wellpath Report

No. 2H AWP

Page 4 of 10



REFERENCE WELLPATH IDENTIFICATION			
Operator	Mewbourne Oil Company	Slot	No. 2H SHL
Area	Eddy County, NM	Well	No. 2H
Field	(Parkway) Sec 26, T19S, R29E	Wellbore	No. 2H AWB
Facility	Parkway 26 State Com No. 2H		

WELLPATH DATA (235 stations)											
MD [ft]	Inclination [°]	Azimuth [°]	TVD [ft]	Vert Sect [ft]	North [ft]	East [ft]	Grid East [srv ft]	Grid North [srv ft]	Latitude	Longitude	DLS [°/100ft]
6000.60	2.220	289.900	5998.22	-40.38	50.63	-43.73	586388.32	595617.96	32°38'13.714"N	104°03'09.717"W	0.12
6100.60	1.710	315.550	6098.16	-43.12	52.35	-46.59	586385.45	595619.69	32°38'13.731"N	104°03'09.750"W	1.00
6200.60	1.810	357.610	6198.12	-44.06	54.99	-47.71	586384.34	595622.33	32°38'13.757"N	104°03'09.763"W	1.27
6300.60	1.890	10.100	6298.07	-43.63	58.20	-47.48	586384.56	595625.53	32°38'13.789"N	104°03'09.761"W	0.41
6400.60	1.960	351.680	6398.01	-43.38	61.51	-47.44	586384.60	595628.85	32°38'13.822"N	104°03'09.760"W	0.62
6500.60	2.200	348.180	6497.94	-43.79	65.08	-48.08	586383.96	595632.42	32°38'13.857"N	104°03'09.767"W	0.27
6600.60	2.380	348.760	6597.86	-44.33	69.00	-48.88	586383.17	595636.33	32°38'13.896"N	104°03'09.777"W	0.18
6700.60	2.740	347.050	6697.77	-44.99	73.36	-49.82	586382.23	595640.70	32°38'13.939"N	104°03'09.788"W	0.37
6800.60	3.050	341.980	6797.64	-46.03	78.22	-51.18	586380.87	595645.56	32°38'13.987"N	104°03'09.803"W	0.40
6900.60	3.260	343.400	6897.49	-47.33	83.48	-52.81	586379.23	595650.81	32°38'14.039"N	104°03'09.822"W	0.22
7000.60	3.400	338.570	6997.32	-48.86	88.96	-54.71	586377.34	595656.30	32°38'14.094"N	104°03'09.844"W	0.31
7100.60	2.750	334.230	7097.17	-50.67	93.88	-56.84	586375.21	595661.22	32°38'14.142"N	104°03'09.869"W	0.69
7200.60	2.340	330.020	7197.07	-52.47	97.81	-58.90	586373.15	595665.14	32°38'14.181"N	104°03'09.893"W	0.45
7300.60	1.860	326.740	7297.01	-54.18	100.94	-60.81	586371.24	595668.27	32°38'14.212"N	104°03'09.915"W	0.49
7325.10	1.720	325.890	7321.49	-54.56	101.57	-61.23	586370.81	595668.91	32°38'14.219"N	104°03'09.920"W	0.58
7375.00	0.700	328.000	7371.38	-55.09	102.45	-61.81	586370.23	595669.78	32°38'14.227"N	104°03'09.927"W	2.05
7405.00	0.300	78.200	7401.38	-55.09	102.62	-61.83	586370.21	595669.96	32°38'14.229"N	104°03'09.927"W	2.84
7438.00	0.300	95.200	7434.38	-54.92	102.63	-61.66	586370.38	595669.97	32°38'14.229"N	104°03'09.925"W	0.27
7468.00	0.500	132.200	7464.38	-54.75	102.54	-61.49	586370.56	595669.87	32°38'14.228"N	104°03'09.923"W	1.06
7500.00	0.900	147.200	7496.38	-54.54	102.23	-61.25	586370.80	595669.57	32°38'14.225"N	104°03'09.920"W	1.36
7532.00	1.000	157.400	7528.37	-54.32	101.77	-61.01	586371.04	595669.10	32°38'14.221"N	104°03'09.917"W	0.61
7564.00	1.700	119.300	7560.37	-53.83	101.28	-60.48	586371.56	595668.61	32°38'14.216"N	104°03'09.911"W	3.44
7596.00	3.900	97.300	7592.33	-52.37	100.90	-58.99	586373.05	595668.24	32°38'14.212"N	104°03'09.894"W	7.53
7628.00	7.400	87.300	7624.17	-49.24	100.86	-55.85	586376.19	595668.19	32°38'14.212"N	104°03'09.857"W	11.32
7660.00	11.300	82.100	7655.74	-44.05	101.39	-50.69	586381.36	595668.72	32°38'14.217"N	104°03'09.797"W	12.46
7691.00	15.300	80.300	7685.90	-36.95	102.50	-43.64	586388.40	595669.83	32°38'14.227"N	104°03'09.714"W	12.97
7723.00	19.000	80.700	7716.47	-27.56	104.05	-34.34	586397.71	595671.38	32°38'14.243"N	104°03'09.606"W	11.57
7755.00	22.800	79.200	7746.36	-16.22	106.06	-23.10	586408.94	595673.39	32°38'14.262"N	104°03'09.474"W	11.99
7787.00	25.600	79.700	7775.54	-3.20	108.46	-10.21	586421.83	595675.79	32°38'14.285"N	104°03'09.323"W	8.77
7819.00	28.700	79.700	7804.02	11.30	111.07	4.16	586436.20	595678.40	32°38'14.311"N	104°03'09.155"W	9.69

# Actual Wellpath Report

No. 2H AWP  
Page 5 of 10



## REFERENCE WELLPATH IDENTIFICATION

Operator	Mewbourne Oil Company	Slot	No. 2H SHL
Area	Eddy County, NM	Well	No. 2H
Field	(Parkway) Sec 26, T19S, R29E	Wellbore	No. 2H AWB
Facility	Parkway 26 State Com No. 2H		

## WELLPATH DATA (235 stations)

MD [ft]	Inclination [°]	Azimuth [°]	TVD [ft]	Vert Sect [ft]	North [ft]	East [ft]	Grid East [srv ft]	Grid North [srv ft]	Latitude	Longitude	DLS [°/100ft]
7850.00	31.800	81.500	7830.79	26.84	113.60	19.56	586451.60	595680.93	32°38'14.336"N	104°03'08.975"W	10.42
7882.00	34.500	83.700	7857.58	44.30	115.85	36.91	586468.95	595683.18	32°38'14.357"N	104°03'08.772"W	9.24
7914.00	36.800	85.400	7883.58	62.94	117.61	55.48	586487.51	595684.94	32°38'14.374"N	104°03'08.555"W	7.83
7946.00	39.100	84.700	7908.82	82.61	119.31	75.08	586507.12	595686.64	32°38'14.391"N	104°03'08.326"W	7.31
7978.00	40.900	84.900	7933.33	103.17	121.17	95.57	586527.60	595688.50	32°38'14.409"N	104°03'08.086"W	5.64
8010.00	43.900	86.300	7956.96	124.75	122.82	117.08	586549.11	595690.15	32°38'14.424"N	104°03'07.834"W	9.83
8042.00	47.700	88.100	7979.26	147.68	123.93	139.99	586572.01	595691.26	32°38'14.435"N	104°03'07.567"W	12.54
8074.00	50.900	89.300	8000.13	171.91	124.47	164.24	586596.26	595691.80	32°38'14.439"N	104°03'07.283"W	10.40
8105.00	54.800	90.400	8018.84	196.57	124.53	188.94	586620.96	595691.86	32°38'14.439"N	104°03'06.994"W	12.89
8137.00	57.200	90.700	8036.74	223.02	124.28	215.46	586647.49	595691.61	32°38'14.436"N	104°03'06.684"W	7.54
8169.00	59.800	91.000	8053.46	250.22	123.87	242.74	586674.76	595691.20	32°38'14.431"N	104°03'06.365"W	8.16
8201.00	62.100	90.700	8068.99	278.10	123.46	270.71	586702.73	595690.79	32°38'14.427"N	104°03'06.038"W	7.23
8233.00	65.200	89.500	8083.20	306.71	123.41	299.38	586731.40	595690.74	32°38'14.425"N	104°03'05.703"W	10.25
8263.00	68.700	88.800	8094.94	334.28	123.82	326.98	586758.99	595691.15	32°38'14.429"N	104°03'05.380"W	11.86
8295.00	73.200	87.200	8105.38	364.50	124.88	357.20	586789.21	595692.21	32°38'14.438"N	104°03'05.026"W	14.83
8327.00	77.400	86.600	8113.50	395.45	126.56	388.10	586820.11	595693.89	32°38'14.454"N	104°03'04.665"W	13.25
8359.00	79.200	85.900	8119.99	426.78	128.61	419.37	586851.37	595695.94	32°38'14.474"N	104°03'04.299"W	6.02
8391.00	79.800	85.800	8125.82	458.24	130.89	450.75	586882.75	595698.21	32°38'14.495"N	104°03'03.932"W	1.90
8422.00	79.700	85.300	8131.34	488.75	133.25	481.16	586913.16	595700.58	32°38'14.518"N	104°03'03.577"W	1.62
8454.00	80.800	85.900	8136.76	520.28	135.67	512.61	586944.60	595703.00	32°38'14.541"N	104°03'03.209"W	3.90
8486.00	83.900	86.800	8141.02	551.99	137.69	544.25	586976.25	595705.02	32°38'14.560"N	104°03'02.839"W	10.08
8570.00	90.000	86.800	8145.48	635.83	142.37	627.96	587059.95	595709.70	32°38'14.604"N	104°03'01.860"W	7.26
8602.00	90.200	86.800	8145.43	667.83	144.16	659.91	587091.90	595711.48	32°38'14.621"N	104°03'01.486"W	0.62
8634.00	88.800	86.700	8145.71	699.83	145.97	691.86	587123.84	595713.30	32°38'14.638"N	104°03'01.112"W	4.39
8666.00	88.600	86.600	8146.43	731.82	147.84	723.80	587155.78	595715.17	32°38'14.656"N	104°03'00.739"W	0.70
8697.00	88.600	86.700	8147.19	762.81	149.65	754.74	587186.71	595716.98	32°38'14.673"N	104°03'00.377"W	0.32
8734.00	88.900	87.200	8148.00	799.80	151.62	791.67	587223.65	595718.95	32°38'14.691"N	104°02'59.945"W	1.58
8758.00	89.700	86.800	8148.29	823.79	152.87	815.64	587247.61	595720.20	32°38'14.703"N	104°02'59.665"W	3.73
8790.00	89.900	86.800	8148.40	855.79	154.66	847.59	587279.56	595721.99	32°38'14.720"N	104°02'59.291"W	0.62
8824.00	90.100	86.900	8148.40	889.79	156.53	881.54	587313.50	595723.86	32°38'14.738"N	104°02'58.894"W	0.66

# Actual Wellpath Report

No. 2H AWP

Page 6 of 10



INTEQ

REFERENCE WELLPATH IDENTIFICATION			
Operator	Mewbourne Oil Company	Slot	No. 2H SHL
Area	Eddy County, NM	Well	No. 2H
Field	(Parkway) Sec 26, T19S, R29E	Wellbore	No. 2H AWB
Facility	Parkway 26 State Com No. 2H		

WELLPATH DATA (235 stations)											
MD [ft]	Inclination [°]	Azimuth [°]	TVD [ft]	Vert Sect [ft]	North [ft]	East [ft]	Grid East [srv ft]	Grid North [srv ft]	Latitude	Longitude	DLS [°/100ft]
8855.00	90.100	86.400	8148.35	920.79	158.34	912.48	587344.45	595725.67	32°38'14.755"N	104°02'58.532"W	1.61
8887.00	90.100	86.300	8148.29	952.79	160.38	944.42	587376.38	595727.70	32°38'14.774"N	104°02'58.159"W	0.31
8919.00	89.900	85.900	8148.29	984.79	162.55	976.35	587408.30	595729.88	32°38'14.795"N	104°02'57.785"W	1.40
8951.00	89.600	85.900	8148.43	1016.79	164.84	1008.26	587440.22	595732.17	32°38'14.817"N	104°02'57.412"W	0.94
8982.00	89.400	86.800	8148.70	1047.79	166.82	1039.20	587471.15	595734.14	32°38'14.835"N	104°02'57.050"W	2.97
9014.00	89.200	87.300	8149.09	1079.78	168.46	1071.15	587503.10	595735.79	32°38'14.851"N	104°02'56.676"W	1.68
9046.00	89.000	87.100	8149.60	1111.77	170.03	1103.11	587535.06	595737.35	32°38'14.865"N	104°02'56.303"W	0.88
9078.00	89.400	87.700	8150.04	1143.76	171.48	1135.08	587567.02	595738.80	32°38'14.879"N	104°02'55.929"W	2.25
9110.00	89.300	88.000	8150.41	1175.75	172.68	1167.05	587598.99	595740.00	32°38'14.890"N	104°02'55.555"W	0.99
9142.00	89.100	88.000	8150.85	1207.73	173.79	1199.03	587630.97	595741.12	32°38'14.900"N	104°02'55.181"W	0.62
9174.00	88.800	87.900	8151.44	1239.72	174.94	1231.00	587662.94	595742.26	32°38'14.911"N	104°02'54.807"W	0.99
9205.00	88.500	87.600	8152.17	1270.70	176.16	1261.97	587693.90	595743.48	32°38'14.922"N	104°02'54.445"W	1.37
9237.00	88.500	88.300	8153.01	1302.67	177.30	1293.94	587725.87	595744.62	32°38'14.932"N	104°02'54.071"W	2.19
9268.00	88.400	88.600	8153.85	1333.64	178.14	1324.92	587756.84	595745.46	32°38'14.940"N	104°02'53.709"W	1.02
9299.00	88.300	88.800	8154.74	1364.60	178.84	1355.89	587787.82	595746.17	32°38'14.946"N	104°02'53.346"W	0.72
9331.00	89.300	88.700	8155.41	1396.56	179.54	1387.88	587819.80	595746.86	32°38'14.952"N	104°02'52.972"W	3.14
9363.00	89.000	88.500	8155.88	1428.53	180.32	1419.87	587851.79	595747.65	32°38'14.959"N	104°02'52.598"W	1.13
9395.00	88.900	88.000	8156.47	1460.51	181.30	1451.85	587883.76	595748.62	32°38'14.968"N	104°02'52.224"W	1.59
9426.00	89.100	88.300	8157.01	1491.49	182.30	1482.83	587914.74	595749.62	32°38'14.977"N	104°02'51.862"W	1.16
9458.00	89.600	89.700	8157.37	1523.45	182.86	1514.82	587946.73	595750.18	32°38'14.981"N	104°02'51.488"W	4.65
9490.00	89.600	89.900	8157.60	1555.39	182.97	1546.82	587978.73	595750.29	32°38'14.982"N	104°02'51.114"W	0.62
9522.00	89.600	90.200	8157.82	1587.32	182.94	1578.82	588010.72	595750.26	32°38'14.981"N	104°02'50.740"W	0.94
9554.00	89.400	90.100	8158.10	1619.25	182.86	1610.81	588042.72	595750.18	32°38'14.979"N	104°02'50.365"W	0.70
9585.00	89.400	90.100	8158.42	1650.18	182.80	1641.81	588073.71	595750.13	32°38'14.977"N	104°02'50.003"W	0.00
9617.00	89.800	90.300	8158.65	1682.10	182.69	1673.81	588105.71	595750.02	32°38'14.976"N	104°02'49.629"W	1.40
9649.00	89.900	90.400	8158.73	1714.02	182.50	1705.81	588137.71	595749.82	32°38'14.973"N	104°02'49.255"W	0.44
9681.00	89.600	90.200	8158.87	1745.95	182.33	1737.81	588169.70	595749.65	32°38'14.970"N	104°02'48.880"W	1.13
9713.00	89.400	89.800	8159.15	1777.88	182.33	1769.81	588201.70	595749.65	32°38'14.969"N	104°02'48.506"W	1.40
9745.00	89.400	89.700	8159.49	1809.82	182.47	1801.81	588233.69	595749.79	32°38'14.970"N	104°02'48.132"W	0.31
9777.00	89.300	89.700	8159.85	1841.76	182.63	1833.80	588265.69	595749.96	32°38'14.971"N	104°02'47.758"W	0.31

# Actual Wellpath Report

No. 2H AWP

Page 7 of 10



INTEQ

REFERENCE WELLPATH IDENTIFICATION			
Operator	Mewbourne Oil Company	Slot	No. 2H SHL
Area	Eddy County, NM	Well	No. 2H
Field	(Parkway) Sec 26, T19S, R29E	Wellbore	No. 2H AWB
Facility	Parkway 26 State Com No. 2H		

WELLPATH DATA (235 stations)											
MD [ft]	Inclination [°]	Azimuth [°]	TVD [ft]	Vert Sect [ft]	North [ft]	East [ft]	Grid East [srv ft]	Grid North [srv ft]	Latitude	Longitude	DLS [°/100ft]
9808.00	89.200	88.600	8160.25	1872.72	183.09	1864.80	588296.68	595750.42	32°38'14.974"N	104°02'47.395"W	3.56
9840.00	89.200	88.100	8160.70	1904.70	184.02	1896.78	588328.66	595751.34	32°38'14.983"N	104°02'47.021"W	1.56
9872.00	89.200	88.100	8161.15	1936.68	185.08	1928.76	588360.64	595752.40	32°38'14.992"N	104°02'46.647"W	0.00
9904.00	89.200	88.000	8161.59	1968.66	186.17	1960.74	588392.61	595753.49	32°38'15.002"N	104°02'46.273"W	0.31
9936.00	89.400	88.200	8161.99	2000.64	187.23	1992.72	588424.59	595754.55	32°38'15.012"N	104°02'45.899"W	0.88
9968.00	89.300	88.200	8162.35	2032.62	188.23	2024.70	588456.57	595755.56	32°38'15.021"N	104°02'45.525"W	0.31
9998.00	89.400	88.400	8162.69	2062.60	189.12	2054.69	588486.55	595756.45	32°38'15.029"N	104°02'45.175"W	0.75
10030.00	89.400	88.100	8163.02	2094.58	190.10	2086.67	588518.53	595757.42	32°38'15.038"N	104°02'44.801"W	0.94
10062.00	89.400	87.900	8163.36	2126.57	191.22	2118.65	588550.51	595758.54	32°38'15.048"N	104°02'44.427"W	0.62
10094.00	89.400	88.000	8163.69	2158.55	192.36	2150.63	588582.48	595759.68	32°38'15.058"N	104°02'44.053"W	0.31
10126.00	89.400	87.900	8164.03	2190.54	193.50	2182.60	588614.46	595760.83	32°38'15.069"N	104°02'43.679"W	0.31
10158.00	89.500	87.800	8164.34	2222.52	194.71	2214.58	588646.43	595762.03	32°38'15.080"N	104°02'43.305"W	0.44
10190.00	89.600	88.000	8164.59	2254.51	195.88	2246.56	588678.41	595763.20	32°38'15.091"N	104°02'42.931"W	0.70
10222.00	89.700	88.000	8164.78	2286.49	196.99	2278.54	588710.38	595764.32	32°38'15.101"N	104°02'42.557"W	0.31
10253.00	89.800	87.900	8164.92	2317.48	198.10	2309.52	588741.36	595765.43	32°38'15.111"N	104°02'42.195"W	0.46
10285.00	89.700	87.600	8165.06	2349.47	199.36	2341.49	588773.33	595766.68	32°38'15.123"N	104°02'41.821"W	0.99
10317.00	89.000	87.400	8165.42	2381.46	200.76	2373.46	588805.30	595768.08	32°38'15.136"N	104°02'41.447"W	2.28
10349.00	87.800	87.700	8166.31	2413.44	202.12	2405.42	588837.25	595769.45	32°38'15.148"N	104°02'41.073"W	3.87
10381.00	87.400	88.000	8167.65	2445.40	203.32	2437.37	588869.20	595770.65	32°38'15.159"N	104°02'40.699"W	1.56
10412.00	87.400	88.000	8169.06	2476.36	204.40	2468.31	588900.15	595771.73	32°38'15.169"N	104°02'40.337"W	0.00
10444.00	88.200	88.600	8170.29	2508.31	205.35	2500.28	588932.11	595772.67	32°38'15.178"N	104°02'39.964"W	3.12
10475.00	88.600	88.700	8171.16	2539.27	206.08	2531.26	588963.08	595773.40	32°38'15.184"N	104°02'39.601"W	1.33
10507.00	88.900	88.700	8171.85	2571.24	206.81	2563.24	588995.06	595774.13	32°38'15.190"N	104°02'39.227"W	0.94
10539.00	88.900	88.800	8172.47	2603.20	207.51	2595.23	589027.05	595774.83	32°38'15.196"N	104°02'38.853"W	0.31
10571.00	88.500	87.700	8173.19	2635.18	208.48	2627.20	589059.02	595775.80	32°38'15.205"N	104°02'38.479"W	3.66
10603.00	88.300	87.300	8174.09	2667.16	209.88	2659.16	589090.98	595777.20	32°38'15.218"N	104°02'38.106"W	1.40
10635.00	88.300	87.200	8175.04	2699.14	211.41	2691.11	589122.92	595778.73	32°38'15.232"N	104°02'37.732"W	0.31
10666.00	88.200	87.400	8175.98	2730.12	212.87	2722.06	589153.87	595780.19	32°38'15.246"N	104°02'37.370"W	0.72
10698.00	88.300	87.500	8176.96	2762.10	214.29	2754.01	589185.82	595781.62	32°38'15.259"N	104°02'36.996"W	0.44
10730.00	88.500	87.500	8177.85	2794.08	215.69	2785.97	589217.78	595783.01	32°38'15.272"N	104°02'36.623"W	0.62

# Actual Wellpath Report

No. 2H AWP

Page 8 of 10



REFERENCE WELLPATH IDENTIFICATION			
Operator	Mewbourne Oil Company	Slot	No. 2H SHL
Area	Eddy County, NM	Well	No. 2H
Field	(Parkway) Sec 26, T19S, R29E	Wellbore	No. 2H AWB
Facility	Parkway 26 State Com No. 2H		

WELLPATH DATA (235 stations)											
MD [ft]	Inclination [°]	Azimuth [°]	TVD [ft]	Vert Sect [ft]	North [ft]	East [ft]	Grid East [srv ft]	Grid North [srv ft]	Latitude	Longitude	DLS [°/100ft]
10762.00	88.700	87.200	8178.64	2826.06	217.17	2817.93	589249.73	595784.49	32°38'15.286"N	104°02'36.249"W	1.13
10794.00	89.400	87.200	8179.17	2858.06	218.73	2849.88	589281.68	595786.05	32°38'15.301"N	104°02'35.875"W	2.19
10826.00	90.300	87.000	8179.25	2890.05	220.35	2881.84	589313.64	595787.67	32°38'15.316"N	104°02'35.501"W	2.88
10857.00	90.300	86.100	8179.09	2921.05	222.22	2912.79	589344.58	595789.54	32°38'15.333"N	104°02'35.139"W	2.90
10889.00	90.400	86.200	8178.89	2953.05	224.37	2944.71	589376.50	595791.69	32°38'15.354"N	104°02'34.766"W	0.44
10922.00	90.600	86.000	8178.60	2986.05	226.61	2977.63	589409.42	595793.93	32°38'15.375"N	104°02'34.381"W	0.86
10953.00	90.200	87.200	8178.39	3017.05	228.45	3008.58	589440.37	595795.77	32°38'15.392"N	104°02'34.019"W	4.08
10985.00	90.100	87.300	8178.30	3049.04	229.98	3040.54	589472.33	595797.30	32°38'15.407"N	104°02'33.645"W	0.44
11017.00	89.900	87.100	8178.30	3081.04	231.55	3072.50	589504.28	595798.87	32°38'15.421"N	104°02'33.271"W	0.88
11049.00	90.000	86.900	8178.33	3113.04	233.22	3104.46	589536.24	595800.54	32°38'15.437"N	104°02'32.898"W	0.70
11081.00	89.700	88.000	8178.42	3145.03	234.65	3136.43	589568.20	595801.97	32°38'15.450"N	104°02'32.524"W	3.56
11112.00	89.400	87.500	8178.66	3176.02	235.86	3167.40	589599.18	595803.18	32°38'15.461"N	104°02'32.162"W	1.88
11144.00	88.800	87.500	8179.16	3208.01	237.26	3199.37	589631.14	595804.58	32°38'15.474"N	104°02'31.788"W	1.87
11176.00	88.600	86.900	8179.89	3239.99	238.82	3231.32	589663.09	595806.14	32°38'15.489"N	104°02'31.414"W	1.98
11208.00	89.600	87.200	8180.39	3271.99	240.47	3263.27	589695.04	595807.79	32°38'15.504"N	104°02'31.040"W	3.26
11239.00	90.800	88.200	8180.28	3302.98	241.71	3294.25	589726.01	595809.03	32°38'15.516"N	104°02'30.678"W	5.04
11271.00	91.200	88.400	8179.72	3334.95	242.66	3326.23	589757.99	595809.98	32°38'15.524"N	104°02'30.304"W	1.40
11303.00	91.500	88.400	8178.97	3366.92	243.55	3358.21	589789.96	595810.87	32°38'15.532"N	104°02'29.930"W	0.94
11335.00	90.000	87.400	8178.55	3398.91	244.73	3390.18	589821.94	595812.05	32°38'15.543"N	104°02'29.556"W	5.63
11366.00	89.800	87.300	8178.61	3429.90	246.16	3421.15	589852.90	595813.48	32°38'15.556"N	104°02'29.194"W	0.72
11398.00	89.600	87.600	8178.77	3461.89	247.58	3453.12	589884.87	595814.90	32°38'15.570"N	104°02'28.820"W	1.13
11429.00	89.800	87.400	8178.93	3492.89	248.94	3484.09	589915.83	595816.25	32°38'15.582"N	104°02'28.458"W	0.91
11461.00	90.000	87.500	8178.99	3524.88	250.36	3516.06	589947.80	595817.68	32°38'15.595"N	104°02'28.084"W	0.70
11493.00	90.300	88.000	8178.91	3556.87	251.62	3548.03	589979.77	595818.93	32°38'15.607"N	104°02'27.710"W	1.82
11524.00	90.500	88.300	8178.69	3587.85	252.62	3579.01	590010.75	595819.93	32°38'15.616"N	104°02'27.348"W	1.16
11556.00	88.600	87.700	8178.94	3619.84	253.73	3610.99	590042.73	595821.05	32°38'15.626"N	104°02'26.974"W	6.23
11588.00	88.400	87.400	8179.78	3651.82	255.10	3642.95	590074.68	595822.42	32°38'15.639"N	104°02'26.600"W	1.13
11619.00	89.000	87.400	8180.48	3682.80	256.51	3673.91	590105.64	595823.82	32°38'15.652"N	104°02'26.238"W	1.94
11650.00	89.100	87.900	8181.00	3713.79	257.78	3704.88	590136.61	595825.10	32°38'15.664"N	104°02'25.876"W	1.64
11682.00	89.300	88.200	8181.44	3745.77	258.87	3736.86	590168.58	595826.18	32°38'15.674"N	104°02'25.502"W	1.13

# Actual Wellpath Report

No. 2H AWP

Page 9 of 10



INTEQ

REFERENCE WELLPATH IDENTIFICATION			
Operator	Mewbourne Oil Company	Slot	No. 2H SHL
Area	Eddy County, NM	Well	No. 2H
Field	(Parkway) Sec 26, T19S, R29E	Wellbore	No. 2H AWB
Facility	Parkway 26 State Com No. 2H		

WELLPATH DATA (235 stations)											
MD [ft]	Inclination [°]	Azimuth [°]	TVD [ft]	Vert Sect [ft]	North [ft]	East [ft]	Grid East [srv ft]	Grid North [srv ft]	Latitude	Longitude	DLS [°/100ft]
11709.00	87.900	88.600	8182.10	3772.75	259.62	3763.84	590195.56	595826.94	32°38'15.680"N	104°02'25.186"W	5.39
11748.00	87.700	89.100	8183.60	3811.68	260.40	3802.80	590234.52	595827.72	32°38'15.687"N	104°02'24.731"W	1.38
11780.00	87.700	89.200	8184.88	3843.61	260.88	3834.77	590266.49	595828.19	32°38'15.691"N	104°02'24.357"W	0.31
11811.00	87.500	89.000	8186.18	3874.55	261.36	3865.74	590297.46	595828.68	32°38'15.695"N	104°02'23.995"W	0.91
11843.00	87.300	89.300	8187.63	3906.48	261.84	3897.71	590329.42	595829.15	32°38'15.699"N	104°02'23.621"W	1.13
11874.00	87.700	89.200	8188.99	3937.41	262.24	3928.67	590360.38	595829.56	32°38'15.702"N	104°02'23.259"W	1.33
11906.00	87.700	89.100	8190.27	3969.34	262.72	3960.64	590392.35	595830.03	32°38'15.706"N	104°02'22.885"W	0.31
11938.00	87.300	88.800	8191.67	4001.28	263.30	3992.61	590424.31	595830.62	32°38'15.711"N	104°02'22.511"W	1.56
11970.00	87.400	88.300	8193.15	4033.22	264.11	4024.56	590456.26	595831.43	32°38'15.718"N	104°02'22.137"W	1.59
12001.00	87.200	88.400	8194.61	4064.16	265.00	4055.52	590487.21	595832.32	32°38'15.726"N	104°02'21.775"W	0.72
12033.00	87.300	87.900	8196.14	4096.11	266.03	4087.46	590519.16	595833.35	32°38'15.735"N	104°02'21.402"W	1.59
12065.00	87.400	87.400	8197.62	4128.07	267.35	4119.40	590551.09	595834.66	32°38'15.747"N	104°02'21.028"W	1.59
12097.00	87.700	87.300	8198.99	4160.03	268.82	4151.34	590583.03	595836.14	32°38'15.761"N	104°02'20.655"W	0.99
12129.00	87.600	87.400	8200.30	4192.00	270.30	4183.28	590614.96	595837.62	32°38'15.775"N	104°02'20.281"W	0.44
12161.00	87.800	87.100	8201.59	4223.97	271.84	4215.21	590646.90	595839.15	32°38'15.789"N	104°02'19.908"W	1.13
12193.00	87.700	86.900	8202.84	4255.94	273.51	4247.15	590678.83	595840.83	32°38'15.805"N	104°02'19.534"W	0.70
12225.00	87.900	86.700	8204.07	4287.92	275.29	4279.07	590710.75	595842.61	32°38'15.821"N	104°02'19.161"W	0.88
12256.00	88.000	86.300	8205.18	4318.90	277.19	4310.00	590741.67	595844.50	32°38'15.839"N	104°02'18.799"W	1.33
12288.00	88.300	86.400	8206.21	4350.88	279.22	4341.91	590773.59	595846.54	32°38'15.858"N	104°02'18.426"W	0.99
12320.00	88.700	85.700	8207.05	4382.87	281.43	4373.83	590805.50	595848.74	32°38'15.879"N	104°02'18.053"W	2.52
12351.00	89.000	85.600	8207.67	4413.86	283.78	4404.73	590836.40	595851.09	32°38'15.902"N	104°02'17.691"W	1.02
12383.00	89.400	84.900	8208.12	4445.85	286.43	4436.62	590868.28	595853.74	32°38'15.927"N	104°02'17.318"W	2.52
12415.00	89.700	84.900	8208.37	4477.84	289.27	4468.49	590900.15	595856.59	32°38'15.954"N	104°02'16.945"W	0.94
12446.00	90.100	84.700	8208.42	4508.83	292.08	4499.36	590931.02	595859.40	32°38'15.981"N	104°02'16.584"W	1.44
12500.00	90.100	84.700	8208.33	4562.81	297.07	4553.13	590984.79	595864.38	32°38'16.029"N	104°02'15.955"W	0.00

# Actual Wellpath Report

No. 2H AWP  
Page 10 of 10



REFERENCE WELLPATH IDENTIFICATION			
Operator	Mewbourne Oil Company	Slot	No. 2H SHL
Area	Eddy County, NM	Well	No. 2H
Field	(Parkway) Sec 26, T19S, R29E	Wellbore	No. 2H AWB
Facility	Parkway 26 State Com No. 2H		

TARGETS									
Name	MD [ft]	TVD [ft]	North [ft]	East [ft]	Grid East [srv ft]	Grid North [srv ft]	Latitude	Longitude	Shape
No. 2H PBHL		8159.00	299.05	4632.35	591064.00	595866.37	32°38'16.047"N	104°02'15.029"W	point

WELLPATH COMPOSITION Ref Wellbore: No. 2H AWB Ref Wellpath: No. 2H AWP				
Start MD [ft]	End MD [ft]	Positional Uncertainty Model	Log Name/Comment	Wellbore
0.00	7325.10	Gyrodata standard - Drop gyro or Multi-shot	GyroData - <100.6 - 7325.1>	No. 2H AWB
7325.10	12446.00	NaviTrak (Standard)	MWD - <7375 - 12446>	No. 2H AWB
12446.00	12500.00	Blind Drilling (std)	Projection to bit	No. 2H AWB



Prepared for		Company	Date		
Mr. Mickey Young		Mewbourne Oil Company	11-Feb-10		
Well Name		Type of Installation	Location		
Parkway 26 State Com #2H		12-Stage 4-1/2" StackFRAC® HD	Eddy County, NM		
Depth	Drawing	Description	OD(in)	ID(in)	Length
<b>Page 1 of 2</b>					
KO 7,584'					
TVD 8,208'					
TOL 8,249'					
315.93 bbls PERM-131		Latched Seal Assembly 7" 23-32 ppf x 3.75" Lower Bore x 4.75" Upper Bore Liner Hanger Packer PN: 106194-000002 (2 shear pins at 529 each: 1,058psi setting pressure) Bottom Guide	5.875"	4.750	7.38
			5.850"	3.750	
SHOE 8,556'		7" 26# P-110 LT&C Casing 6-1/8" Open Hole Horizontal Well			
		4-1/2" 11.60# P-110 LTC LINER JOINTS: 9	4.500"	4.000	345.97
Stage 12 8,603'		Packers Plus 4-1/2" Drillable FracPORT™ with 3.250" Seat for 3.50" High Pressure Ball PN: 108482-000059 (5 shear pins at 315 psi each: 1,575 psi opening pressure)	5.630"	3.250	2.65
321 bbls EM0004505		4-1/2" 11.60# P-110 LTC LINER JOINTS: 4	4.500"	4.000	153.37
		6' x 4-1/2" 11.6# P-110 Combo LTC x BTC Pup Joint	4.500"	4.000	6.07
		Packers Plus 7" x 4-1/2" RockSEAL® II 10K Centralized Hydraulic Set Open Hole Packer PN: 102188-000001 (6 shear pins at 324 psi each: 1,944 psi setting pressure)	5.750"	3.750	5.15
RSII 8,765'		3' x 4-1/2" 11.6# P-110 Combo LTC x BTC Pup Joint	4.500"	4.000	3.13
EM0006828		4-1/2" 11.60# P-110 LTC LINER JOINTS: 4	4.500"	4.000	153.19
Stage 11 8,926'		Packers Plus 4-1/2" Drillable FracPORT™ with 3.125" Seat for 3.250" High Pressure Ball PN: 108482-000058 (5 shear pins at 315 psi each: 1,575 psi opening pressure)	5.630"	3.125	2.65
326 bbls EM0004200		4-1/2" 11.60# P-110 LTC LINER JOINTS: 4	4.500"	4.000	153.73
		6' x 4-1/2" 11.6# P-110 Combo LTC x BTC Pup Joint	4.500"	4.000	5.92
		Packers Plus 7" x 4-1/2" RockSEAL® II 10K Centralized Hydraulic Set Open Hole Packer PN: 102188-000001 (6 shear pins at 324 psi each: 1,944 psi setting pressure)	5.750"	3.750	5.16
RSII 9,089'		3' x 4-1/2" 11.6# P-110 Combo LTC x BTC Pup Joint	4.500"	4.000	3.12
EM0009909		4-1/2" 11.60# P-110 LTC LINER JOINTS: 4	4.500"	4.000	154.37
Stage 10 9,251'		Packers Plus 4-1/2" Drillable FracPORT™ with 3.000" Seat for 3.125" High Pressure Ball PN: 108482-000057 (5 shear pins at 315 psi each: 1,575 psi opening pressure)	5.630"	3.000	2.65
331 bbls EM00009047		4-1/2" 11.60# P-110 LTC Short Joint	4.500"	4.000	16.40
		4-1/2" 11.60# P-110 LTC LINER JOINTS: 3	4.500"	4.000	114.36
		6' x 4-1/2" 11.6# P-110 Combo LTC x BTC Pup Joint	4.500"	4.000	5.96
		Packers Plus 7" x 4-1/2" RockSEAL® II 10K Centralized Hydraulic Set Open Hole Packer PN: 102188-000001 (6 shear pins at 324 psi each: 1,944 psi setting pressure)	5.750"	3.750	5.16
RSII 9,391'		3' x 4-1/2" 11.6# P-110 Combo LTC x BTC Pup Joint	4.500"	4.000	3.14
EM0009903		4-1/2" 11.60# P-110 LTC LINER JOINTS: 4	4.500"	4.000	153.53
Stage 9 9,552'		Packers Plus 4-1/2" Drillable FracPORT™ with 2.875" Seat for 3.000" High Pressure Ball PN: 108482-000056 (5 shear pins at 315 psi each: 1,575 psi opening pressure)	5.630"	2.875	2.65
335 bbls EM0004177		4-1/2" 11.60# P-110 LTC LINER JOINTS: 4	4.500"	4.000	152.35
		6' x 4-1/2" 11.6# P-110 Combo LTC x BTC Pup Joint	4.500"	4.000	5.95
		Packers Plus 7" x 4-1/2" RockSEAL® II 10K Centralized Hydraulic Set Open Hole Packer PN: 102188-000001 (6 shear pins at 324 psi each: 1,944 psi setting pressure)	5.750"	3.750	5.17
RSII 9,713'		3' x 4-1/2" 11.6# P-110 Combo LTC x BTC Pup Joint	4.500"	4.000	3.16
EM0009906		4-1/2" 11.60# P-110 LTC LINER JOINTS: 3	4.500"	4.000	113.78
Stage 8 9,836'		Packers Plus 4-1/2" Drillable FracPORT™ with 2.750" Seat for 2.875" High Pressure Ball PN: 108482-000055 (5 shear pins at 315 psi each: 1,575 psi opening pressure)	5.630"	2.750	2.65
340 bbls EM0007063		4-1/2" 11.60# P-110 LTC LINER JOINTS: 4	4.500"	4.000	151.91
		6' x 4-1/2" 11.6# P-110 Combo LTC x BTC Pup Joint	4.500"	4.000	5.97
		Packers Plus 7" x 4-1/2" RockSEAL® II 10K Centralized Hydraulic Set Open Hole Packer PN: 102188-000001 (6 shear pins at 324 psi each: 1,944 psi setting pressure)	5.750"	3.750	5.17
RSII 9,996'		3' x 4-1/2" 11.6# P-110 Combo LTC x BTC Pup Joint	4.500"	4.000	3.18
EM0009919		4-1/2" 11.60# P-110 LTC LINER JOINTS: 4	4.500"	4.000	152.18
Service Center	Telephone	Contact	Telephone		
Midland, TX	432-563-8024	Keith Martin	Chad Williams 405-255-3223		

Prepared for		Company	Date		
Mr. Mickey Young		Mewbourne Oil Company	11-Feb-10		
Well Name		Type of Installation	Location		
Parkway 26 State Com #2H		12-Stage 4-1/2" StackFRAC® HD	Eddy County, NM		
Depth	Drawing	Description	OD(in)	ID(in)	Length
<b>Page 2 of 2</b>					
Stage 7 10,157' 345 bbls EM0007051		Packers Plus 4-1/2" Drillable FracPORT™ with 2.625" Seat for 2.750" High Pressure Ball PN: 108482-000054 (5 shear pins at 315 psi each; 1,575 psi opening pressure)  4-1/2" 11.60# P-110 LTC LINER JOINTS: 5 6' x 4-1/2" 11.6# P-110 Combo LTC x BTC Pup Joint Packers Plus 7" x 4-1/2" RockSEAL® II 10K Centralized Hydraulic Set Open Hole Packer PN: 102188-000001 (6 shear pins at 324 psi each; 1,944 psi setting pressure) 3' x 4-1/2" 11.6# P-110 Combo LTC x BTC Pup Joint 4-1/2" 11.60# P-110 LTC LINER JOINTS: 4	5.630" 4.500" 4.500" 5.750" 4.500" 4.500"	2.625 3.720 4.000 4.000 3.750 4.000 4.000	2.65 192.72 5.92 5.15 3.15 153.91
Stage 6 10,520' 350 bbls EM0007150		Packers Plus 4-1/2" Drillable FracPORT™ with 2.500" Seat for 2.625" High Pressure Ball PN: 108482-000053 (5 shear pins at 315 psi each; 1,575 psi opening pressure) 4-1/2" 11.60# P-110 LTC; Short Joint 4-1/2" 11.60# P-110 LTC LINER JOINTS: 5 6' x 4-1/2" 11.6# P-110 Combo LTC x BTC Pup Joint Packers Plus 7" x 4-1/2" RockSEAL® II 10K Centralized Hydraulic Set Open Hole Packer PN: 102188-000001 (6 shear pins at 324 psi each; 1,944 psi setting pressure) 3' x 4-1/2" 11.6# P-110 Combo LTC x BTC Pup Joint 4-1/2" 11.60# P-110 LTC LINER JOINTS: 6	5.630" 4.500" 4.500" 4.500" 5.750" 4.500" 4.500"	2.500 3.720 4.000 4.000 3.750 4.000 4.000	2.65 19.35 191.01 5.93 5.17 3.16 229.16
Stage 5 10,977' 357 bbls EM0007030		Packers Plus 4-1/2" Drillable FracPORT™ with 2.375" Seat for 2.500" High Pressure Ball PN: 108482-000052 (5 shear pins at 315 psi each; 1,575 psi opening pressure) 4-1/2" 11.60# P-110 LTC; Short Joint 4-1/2" 11.60# P-110 LTC LINER JOINTS: 4 6' x 4-1/2" 11.6# P-110 Combo LTC x BTC Pup Joint Packers Plus 7" x 4-1/2" RockSEAL® II 10K Centralized Hydraulic Set Open Hole Packer PN: 102188-000001 (6 shear pins at 324 psi each; 1,944 psi setting pressure) 3' x 4-1/2" 11.6# P-110 Combo LTC x BTC Pup Joint 4-1/2" 11.60# P-110 LTC LINER JOINTS: 6	5.630" 4.500" 4.500" 4.500" 5.750" 4.500" 4.500"	2.375 3.720 4.000 4.000 3.750 4.000 4.000	2.65 20.95 154.41 5.96 5.17 3.17 190.67
Stage 4 11,359' 363 bbls EM0007099		Packers Plus 4-1/2" Drillable FracPORT™ with 2.250" Seat for 2.375" High Pressure Ball PN: 108482-000051 (5 shear pins at 315 psi each; 1,575 psi opening pressure)  4-1/2" 11.60# P-110 LTC LINER JOINTS: 6 6' x 4-1/2" 11.6# P-110 Combo LTC x BTC Pup Joint Packers Plus 7" x 4-1/2" RockSEAL® II 10K Centralized Hydraulic Set Open Hole Packer PN: 102188-000001 (6 shear pins at 324 psi each; 1,944 psi setting pressure) 3' x 4-1/2" 11.6# P-110 Combo LTC x BTC Pup Joint 4-1/2" 11.60# P-110 LTC LINER JOINTS: 6	5.630" 4.500" 4.500" 5.750" 4.500" 4.500"	2.250 3.720 4.000 4.000 3.750 4.000 4.000	2.65 230.26 5.93 5.16 3.12 228.47
Stage 3 11,835' 371 bbls EM0007060		Packers Plus 4-1/2" Drillable FracPORT™ with 2.125" Seat for 2.250" High Pressure Ball PN: 108482-000050 (5 shear pins at 315 psi each; 1,575 psi opening pressure)  4-1/2" 11.60# P-110 LTC LINER JOINTS: 4 6' x 4-1/2" 11.6# P-110 Combo LTC x BTC Pup Joint Packers Plus 7" x 4-1/2" RockSEAL® II 10K Centralized Hydraulic Set Open Hole Packer PN: 102188-000001 (6 shear pins at 324 psi each; 1,944 psi setting pressure) 3' x 4-1/2" 11.6# P-110 Combo LTC x BTC Pup Joint 4-1/2" 11.60# P-110 LTC; Short Joint 4-1/2" 11.60# P-110 LTC LINER JOINTS: 3	5.630" 4.500" 4.500" 5.750" 4.500" 4.500" 4.500"	2.125 3.720 4.000 4.000 3.750 4.000 4.000	2.65 157.14 6.04 5.17 3.14 19.99 119.99
Stage 2 12,149' 375 bbls EM0000875		Packers Plus 4-1/2" Drillable FracPORT™ with 2.000" Seat for 2.125" High Pressure Ball PN: 108482-000049 (5 shear pins at 315 psi each; 1,575 psi opening pressure) 4-1/2" 11.60# P-110 LTC; Short Joint 4-1/2" 11.60# P-110 LTC LINER JOINTS: 3  6' x 4-1/2" 11.6# P-110 Combo LTC x BTC Pup Joint Packers Plus 7" x 4-1/2" RockSEAL® II 10K Centralized Hydraulic Set Open Hole Packer PN: 102188-000001 (6 shear pins at 324 psi each; 1,944 psi setting pressure) 3' x 4-1/2" 11.6# P-110 Combo LTC x BTC Pup Joint 4-1/2" 11.60# P-110 LTC; Short Joint 4-1/2" 11.60# P-110 LTC LINER JOINTS: 3	5.630" 4.500" 4.500" 5.750" 4.500" 4.500" 4.500"	2.000 3.720 4.000 4.000 3.750 4.000 4.000	2.65 19.82 120.48 6.01 5.16 3.15 19.78 116.74
Stage 1 12,449' 380 bbls USDEH-509		6' x 4-1/2" 11.6# P-110 LTC Pup Joint Packers Plus 4-1/2" Dual Hydraulic FracPORT™ Centralized PN: 105900-000002 (10 pins at 391 psi each; 3,910 psi Upper) / (7 pins at 630 psi each; 4,410 psi Lower) 3' x 4-1/2" 11.6# P-110 LTC Pup Joint	4.500" 5.630" 4.500"	4.000 3.750 4.000	6.06 4.33 3.03
Toe Sub 12,462' EA000956		6' x 4-1/2" 11.6# P-110 LTC Pup Joint Packers Plus 4-1/2" Toe Circulating Sub w/ 1.00" Seat for 1.25" High Pressure Ball PN: 103039-000003 (3 pins at 366 psi each; 1,098 psi closing pressure) 4-1/2" LTC Single Valve Float Collar PN: 104733 6' x 4-1/2" 11.6# P-110 LTC Pup Joint	4.500" 5.500" 5.000" 4.500"	4.000 NA NA 4.000	6.03 2.73 1.33 6.02
MD 12,475'		4-1/2" LTC Single Valve Float Collar PN: 104733 4-1/2" LTC Guide Shoe PN: 104818-000002	5.000" 5.500"	NA 2.250	1.34 0.75
Service Center	Telephone	Contact	Telephone		
Midland, TX	432-563-8024	Keith Martin	Chad Williams 405-255-3223		