

UNITED STATES  
DEPARTMENT OF THE INTERIOR  
BUREAU OF LAND MANAGEMENT  
N.M. Oil Cons. Div-Dist. 2  
1301 W. Grand Avenue  
Artesia, NM 88210

FORM APPROVED  
OMB NO. 1004-0136  
Expires: February 28, 1995

F-03

APPLICATION FOR PERMIT TO DRILL OR DEEPEN

1a. TYPE OF WORK

DRILL ☒

DEEPEN ☐

b. TYPE OF WELL

OIL  
WELL ☐

GAS  
WELL ☒

OTHER

SINGLE  
ZONE ☒

MULTIPLE  
ZONE ☐

2. NAME OF OPERATOR

POGO PRODUCING COMPANY 17891 (RICHARD WRIGHT 915-685-8140)

3. ADDRESS AND TELEPHONE NO.

P.O. BOX 10340 MIDLAND, TEXAS 79702-7340 (915-695-8100)

4. LOCATION OF WELL (Report location clearly and in accordance with any State requirements.)\*  
At surface

660' FNL & 1980' FEL SEC. 33 T19S-R27E EDDY CO. NM  
At proposed prod. zone SAME

14. DISTANCE IN MILES AND DIRECTION FROM NEAREST TOWN OR POST OFFICE\*

Approximately 15 miles North of Carlsbad New Mexico

15. DISTANCE FROM PROPOSED\*

LOCATION TO NEAREST  
PROPERTY OR LEASE LINE, FT.  
(Also to nearest drlg. unit line, if any)

660'

16. NO. OF ACRES IN LEASE

640

17. NO. OF ACRES ASSIGNED  
TO THIS WELL

320

18. DISTANCE FROM PROPOSED LOCATION\*  
TO NEAREST WELL, DRILLING, COMPLETED,  
OR APPLIED FOR, ON THIS LEASE, FT.

2200'

19. PROPOSED DEPTH

11,000'

20. ROTARY OR CABLE TOOLS

ROTARY

21. ELEVATIONS (Show whether DF, RT, GR, etc.)

3431'

GR. ~~Acres~~ Controlled Water Basin

22. APPROX. DATE WORK WILL START\*

WHEN APPROVED

23.

PROPOSED CASING AND CEMENTING PROGRAM

SIZE OF HOLE	GRADE SIZE OF CASING	WEIGHT PER FOOT	SETTING DEPTH	QUANTITY OF CEMENT
25"	Conductor	NA	40'	Cement to surface with Redi-mix.
17 1/2"	H-40 13 3/8"	48	500' 350'	550 Sx. circulate to surface.
12 1/2"	J-55 9 5/8"	40.5	3000'	1200 Sx. " " "
* 8 1/2 & 7 7/8"	N-80 J-55	17 & or 26	11,000'	1000 Sx. estimate TOC 2000' FS.



SEE ATTACHMENT FOR DETAILS

APPROVAL SUBJECT TO  
GENERAL REQUIREMENTS AND  
SPECIAL STIPULATIONS  
ATTACHED

4. ABOVE SPACE DESCRIBE PROPOSED PROGRAM: If proposal is to deepen, give data on present productive zone and proposed new productive zone. If proposal is to drill or deepen directionally, give pertinent data on subsurface locations and measured and true vertical depths. Give blowout preventer program, if any.

SIGNED Leslie A. Theiss TITLE Agent

DATE 02/05/03

(This space for Federal or State office use)

PERMIT NO. \_\_\_\_\_ APPROVAL DATE \_\_\_\_\_

Application approval does not warrant or certify that the applicant holds legal or equitable title to those rights in the subject lease which would entitle the applicant to conduct operations thereon.  
CONDITIONS OF APPROVAL, IF ANY:

APPROVED BY /s/ LESLIE A. THEISS TITLE FIELD MANAGER

DATE MAR 10 2003

\*See Instructions On Reverse Side

APPROVAL FOR 1 YEAR

POGO PRODUCING COMPANY  
PECOS "33" FEDERAL # 3  
UNIT "B" SECTION 33  
T19S-R27E EDDY CO. NM

1. Drill 25" hole to 40'. Set 40' of 20" conductor pipe and cement to surface with Redi-mix.
2. Drill 17½" hole to 500'. Run and set 500' of 13 3/8" 48# H-40 ST&C casing. Cement with 500 Sx. of Class "C" cement + 2% CaCl, + ¼# Flocele/Sx., circulate cement.
3. Drill 12¼" hole to 3000'. Run and set 3000' of 9 5/8" 40.5# J-55 ST&C casing. Cement with 1200 Sx. of Class "C" cement + ¼# Flocele/Sx. + 2% CaCl, circulate cement to surface.
4. Drill 8½" hole through the Cisco Reef at 9000'± if no lost circulation problems occur, reduce the hole size to 7 7/8" and drill to TD of 11,000'. If lost circulation does occur in the Cisco Reef run 9000' of 7" 26# N-80 LT&C through the lost circulation zones. Then drill out with a 6 1/8" bit to TD. Run a 5" 18# N-80 LT&C liner from 8800'± to TD. If problems with lost circulation does not occur run 11,000' of 5½" 17# LT&C casing as follows: 3000' of 5½" 17# N-80 LT&C, 6000' of 5½" 17# J-55 LT&C, 2000' of 5½" 17# N-80 LT&C casing. Cement in 3 stages DV tools at 8000' & 5000'±. Cement with 1000 Sx. of Class "H" cement + additives. Estimate top of cement 2000' from surface

## DISTRICT I

P.O. Box 1980, Hobbs, NM 88241-1980

## DISTRICT II

P.O. Drawer DD, Artesia, NM 88211-0719

## DISTRICT III

1000 Rio Brazos Rd., Aztec, NM 87410

## DISTRICT IV

P.O. BOX 2088, SANTA FE, N.M. 87504-2088

## State of New Mexico

Energy, Minerals and Natural Resources Department

## OIL CONSERVATION DIVISION

P.O. Box 2088

Santa Fe, New Mexico 87504-2088

Form C-102

Revised February 10, 1994

Submit to Appropriate District Office

State Lease - 4 Copies

Fee Lease - 3 Copies

## WELL LOCATION AND ACREAGE DEDICATION PLAT

☐ AMENDED REPORT

API Number	Pool Code 81280	Pool Name McMILLIAN MORROW NORTH
Property Code	Property Name PECOS 33 FEDERAL	Well Number 3
OGRID No. 17891	Operator Name POGO PRODUCING COMPANY	Elevation 3431'

## Surface Location

UL or lot No.	Section	Township	Range	Lot Idn	Feet from the	North/South line	Feet from the	East/West line	County
B	33	19-S	27-E		660	NORTH	1980	EAST	EDDY

## Bottom Hole Location If Different From Surface

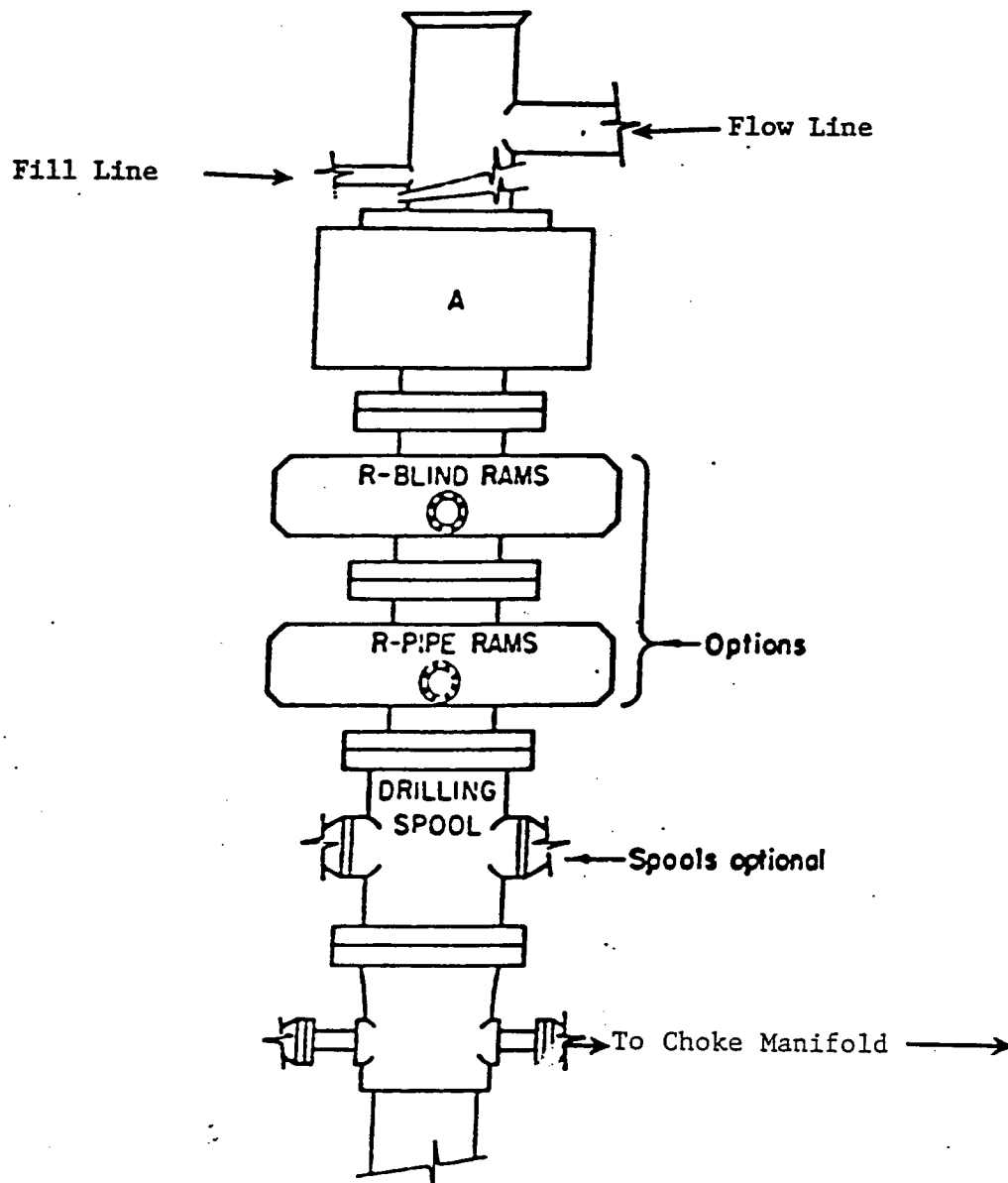
UL or lot No.	Section	Township	Range	Lot Idn	Feet from the	North/South line	Feet from the	East/West line	County

Dedicated Acres 320	Joint or Infill	Consolidation Code	Order No.
------------------------	-----------------	--------------------	-----------

NO ALLOWABLE WILL BE ASSIGNED TO THIS COMPLETION UNTIL ALL INTERESTS HAVE BEEN CONSOLIDATED  
OR A NON-STANDARD UNIT HAS BEEN APPROVED BY THE DIVISION

	<b>OPERATOR CERTIFICATION</b>  I hereby certify the the information contained herein is true and complete to the best of my knowledge and belief.  <i>Joe T. Janica</i> Signature Joe T. Janica Printed Name Agent Title 02/05/03 Date
	<b>SURVEYOR CERTIFICATION</b>  I hereby certify that the well location shown on this plat was plotted from field notes of actual surveys made by me or under my supervision and that the same is true and correct to the best of my belief.  JANUARY 22, 2003 Date Surveyed Signature & Seal of Professional Surveyor <i>Ronald J. Eidson</i> 03-11-0079 Certificate No. RONALD J. EIDSON 3239 GARY EIDSON 12641

EXHIBIT "A"



# **ARRANGEMENT SRRA**

1500 Series  
5000# Working Pressure

EXHIBIT "E"  
SKETCH OF B.O.P. TO BE USED ON

POGO PRODUCING COMPANY  
PECOS "33" FEDERAL # 3  
UNIT "B" SECTION 33  
T19S-R27E EDDY CO. NM

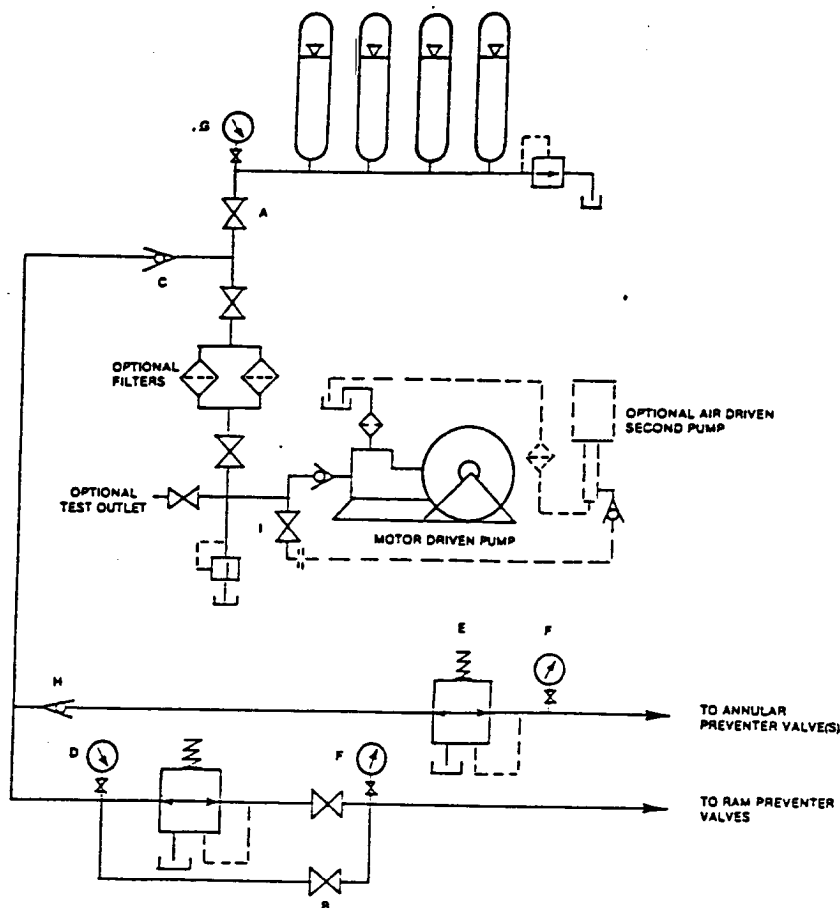


FIGURE K6-1. The schematic sketch of an accumulator system shows required and optional components.

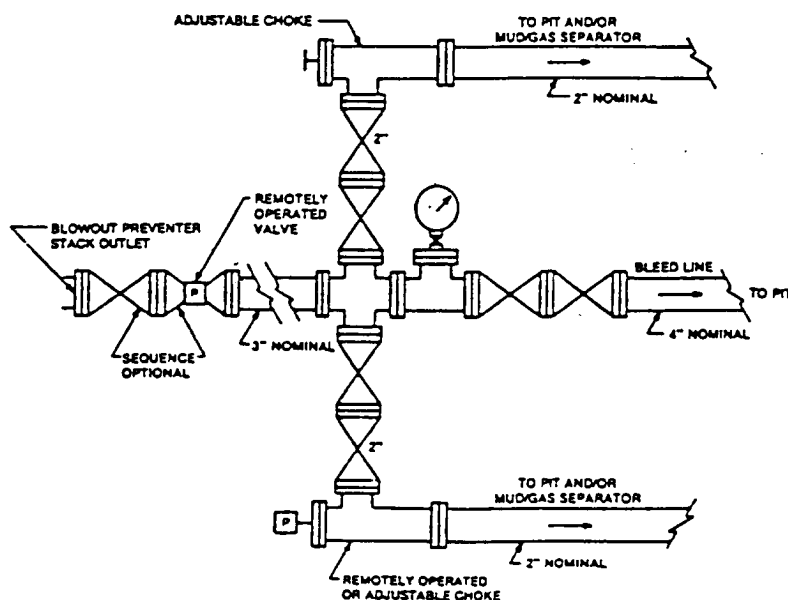


FIGURE K4-2. Typical choke manifold assembly for 5M rated working pressure service — surface installation.

EXHIBIT "E-1"  
CHOKE MANIFOLD & CLOSING UNIT

POGO PRODUCING COMPANY  
PECOS "33" FEDERAL # 3  
UNIT "B" SECTION 33  
T19S-R27E EDDY CO. NM