

RESUBMITTAL

N.M. Oil Corp. DIV. 2 30-015-32687
BIBLIO IN TRIPLICATE
Form approved.
Budget Bureau No. 1004-0136
Expires August 31, 1985
1301 W. C. Avenue
Artesia, NM 88210

UNITED STATES
DEPARTMENT OF THE INTERIOR
BUREAU OF LAND MANAGEMENT

LEASE DESIGNATION AND SERIAL NO.

NM-13409

APPLICATION FOR PERMIT TO DRILL, DEEPEN, OR PLUG BACK

1a. TYPE OF WORK

DRILL ☒

DEEPEN ☐

PLUG BACK ☐

6. IF INDIAN, ALLOTTEE OR TRIBE NAME

7. UNIT AGREEMENT NAME

8. FARM OR LEASE NAME

Pecos "33" Federal

9. WELL NO.

1

10. FIELD AND POOL, OR WILDCAT

Wildcat - Morrow, North

11. SEC., T., R./M., OR BLK.
AND SURVEY OR AREA

Sec. 33, T19S, R27E

12. COUNTY OR PARISH

Eddy County

NM

b. TYPE OF WELL

OIL
WELL ☐

GAS
WELL ☒

OTHER

SINGLE
ZONE ☐

MULTIPLE
ZONE ☐

2. NAME OF OPERATOR

Poac Producing Company 17891

3. ADDRESS OF OPERATOR

P. O. Box 10340, Midland, TX 79702-7340

4. LOCATION OF WELL (Report location clearly and in accordance with any State requirements)

At surface

660' FSL & 660' FWL, Section 33, T19S, R27E - ARTESIA

At proposed prod. zone Same

14. DISTANCE IN MILES AND DIRECTION FROM NEAREST TOWN OR POST OFFICE*

Approximately 10 miles North of Carlsbad, NM

15. DISTANCE FROM PROPOSED*

LOCATION TO NEAREST
PROPERTY OR LEASE LINE, FT.
(Also to nearest drlg. unit line, if any)

660'

16. NO. OF ACRES IN LEASE

640+

17. NO. OF ACRES ASSIGNED
TO THIS WELL

320

18. DISTANCE FROM PROPOSED LOCATION*

TO NEAREST WELL, DRILLING, COMPLETED,
OR APPLIED FOR, ON THIS LEASE, FT.

NA

19. PROPOSED DEPTH

11,000'

20. ROTARY OR CABLE TOOLS

Rotary

21. ELEVATIONS (Show whether DF, RT, GR, etc.)

3432' GR

22. APPROX. DATE WORK WILL START*

When Approved

23.

PROPOSED CASING AND CEMENTING PROGRAM

SIZE OF HOLE	SIZE OF CASING	WEIGHT PER FOOT	SETTING DEPTH	QUANTITY OF CEMENT
25"	Conductor	NA	40'	Cmt to surface w/ Redi-mix
17-1/2"	H-40 13-3/8	48	500' 350'	550 sks circ to surface
12-1/4"	J-55 9-5/8	40.5	3000'	1200 sks circ to surface
8-1/2 & 7-7/8"	J-55 N-80 5-1/2	17	11000'	1200 sks Stage tools @ 9100' & 6000'

Known Controlled Water Basin

- Drill 25" hole to 40'. Set 40' of 20" conductor pipe & cmt to surface w/ Redi-mix.
- Drill 17-1/2" hole to 500'. Run & set 500' of 13-3/8" H-40 48# ST&C csg. Cmt w/ 550 sks Cl "C" cmt + 1/4# Flocele/sx + 2% CaCl, circulate cmt to surface.
- Drill 12-1/4" hole to 3000'. Run & set 3000' of 9-5/8" J-55 40.5# ST&C csg. Cmt w/ 1200 sks Cl "C" cmt + additives, circulate cmt to surface.
- Drill 8-1/2" hole to the Cisco estimated to be ±9000'. If no problems are encountered, reduce hole size to 7-7/8" and drill to TD 11,000'. Run & set 5-1/2" csg as follows: 3000' of 17# N-80 LT&C, 6000' of 17# J-55 LT&C, 2000' of 17# N-80 LT&C. Cmt in three stages, DV tools at ±9100' & ±6000'. Cmt w/ 1200 sks cmt. Circulate cmt to surface.

APPROVAL SUBJECT TO
GENERAL REQUIREMENTS AND
SPECIAL STIPULATIONS

IN ABOVE SPACE DESCRIBE PROPOSED PROGRAM: If proposal is to deepen or plug back, give data on present productive zone and proposed new productive zone. If proposal is to drill or deepen directionally, give pertinent data on subsurface locations and measured and true vertical depths. Give blowout preventer program, if any.

24.

SIGNED

Cathy Imbuel

TITLE

Sr. Operation Tech

DATE

01/14/03

(This space for Federal or State office use)

PERMIT NO.

APPROVAL DATE

APPROVED BY

/S/ JOE G. LARA

TITLE

FIELD MANAGER

DATE

MAR 11 2003

CONDITIONS OF APPROVAL, IF ANY:

APPROVAL FOR 1 YEAR

*See Instructions On Reverse Side

DISTRICT I
P.O. Box 1980, Hobbs, NM 88241-1980

State of New Mexico

Energy, Minerals and Natural Resources Department

Form C-102
Revised February 10, 1994
Submit to Appropriate District Office
State Lease - 4 Copies
Fee Lease - 3 Copies

DISTRICT II
P.O. Drawer DD, Artesia, NM 88211-0719

DISTRICT III
1000 Rio Brazos Rd., Aztec, NM 87410

DISTRICT IV
P.O. Box 2088, Santa Fe, N.M. 87504-2088

OIL CONSERVATION DIVISION

P.O. Box 2088
Santa Fe, New Mexico 87504-2088

☐ AMENDED REPORT

WELL LOCATION AND ACREAGE DEDICATION PLAT

API Number	Pool Code	Pool Name WILDCAT - MORROW
Property Code	Property Name PECOS 33 FED.	Well Number 1
OGRID No. 17891	Operator Name POGO PRODUCING COMPANY	Elevation 3432

Surface Location

UL or lot No. M	Section 33	Township 19 S	Range 27 E	Lot Idn	Feet from the 660	North/South line SOUTH	Feet from the 660	East/West line WEST	County EDDY
--------------------	---------------	------------------	---------------	---------	----------------------	---------------------------	----------------------	------------------------	----------------

Bottom Hole Location If Different From Surface

UL or lot No.	Section	Township	Range	Lot Idn	Feet from the	North/South line	Feet from the	East/West line	County
Dedicated Acres 320	Joint or Infill	Consolidation Code	Order No.						

NO ALLOWABLE WILL BE ASSIGNED TO THIS COMPLETION UNTIL ALL INTERESTS HAVE BEEN CONSOLIDATED
OR A NON-STANDARD UNIT HAS BEEN APPROVED BY THE DIVISION

				OPERATOR CERTIFICATION I hereby certify the the information contained herein is true and complete to the best of my knowledge and belief. Signature Joe T. Janica Printed Name Agent Title 07/26/00 Date	
				SURVEYOR CERTIFICATION I hereby certify that the well location shown on this plat was plotted from field notes of actual surveys made by me or under my supervision, and that the same is true and correct to the best of my belief. JULY 12, 2000 Date Surveyed Signature & Seal of Professional Surveyor Certification No. RONALD J. EIDSON 3239 GARY EIDSON 12641 MADON McDONALD 12185	

EXHIBIT "A"

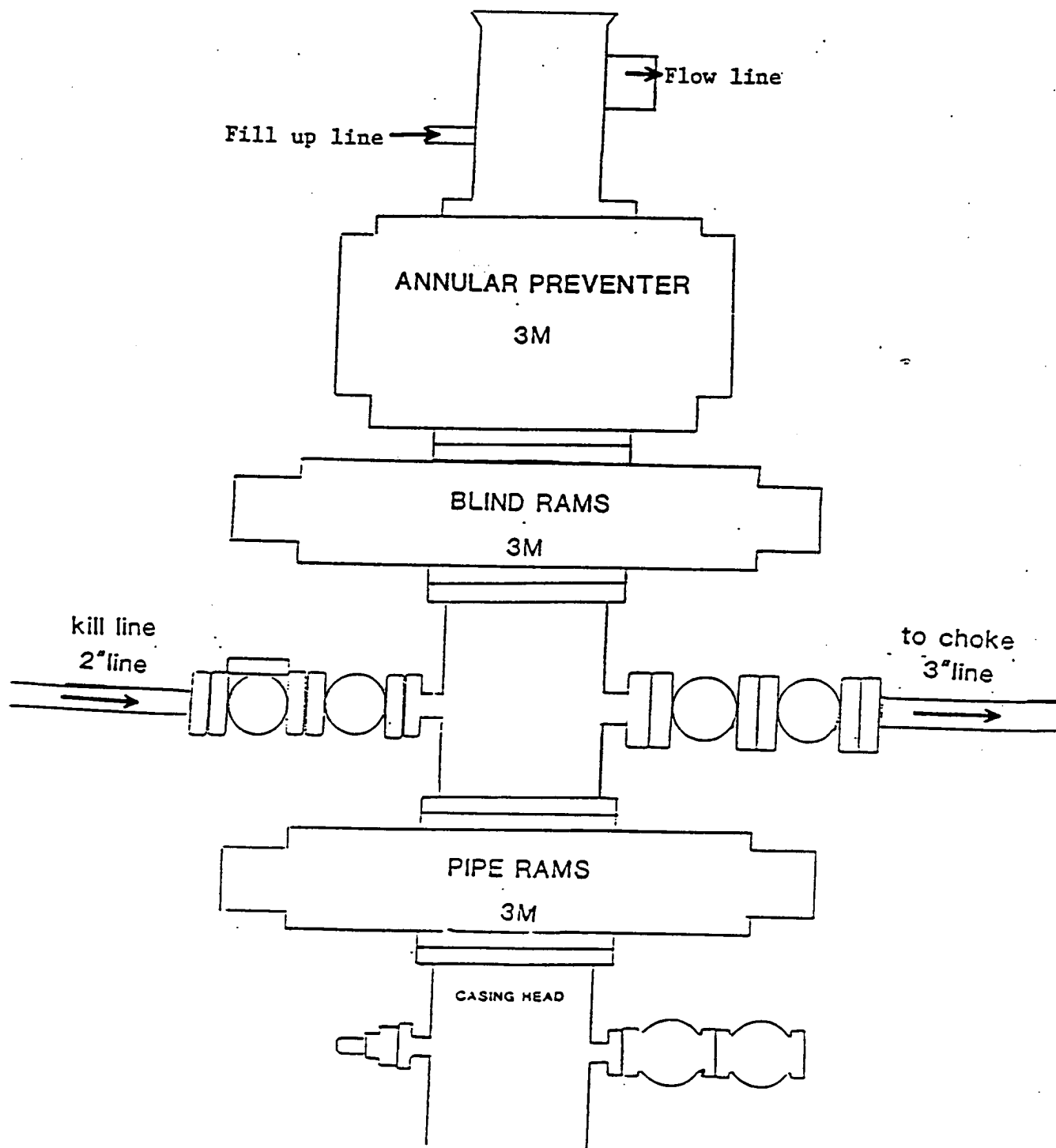
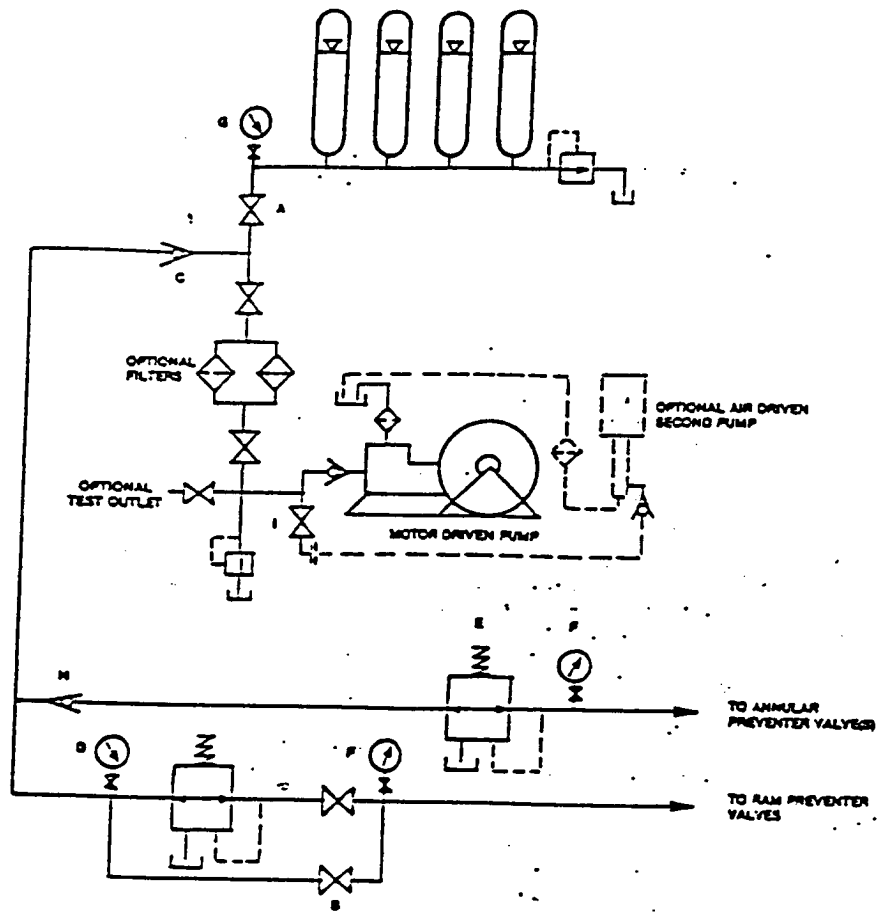


EXHIBIT "E"
SKETCH OF B.O.P. TO BE USED ON

POGO PRODUCING COMPANY
PECOS "33" FEDERAL # 1
UNIT "M" SECTION 33
T19S-R27E EDDY CO. NM



HAND ADJUSTABLE CHOKE

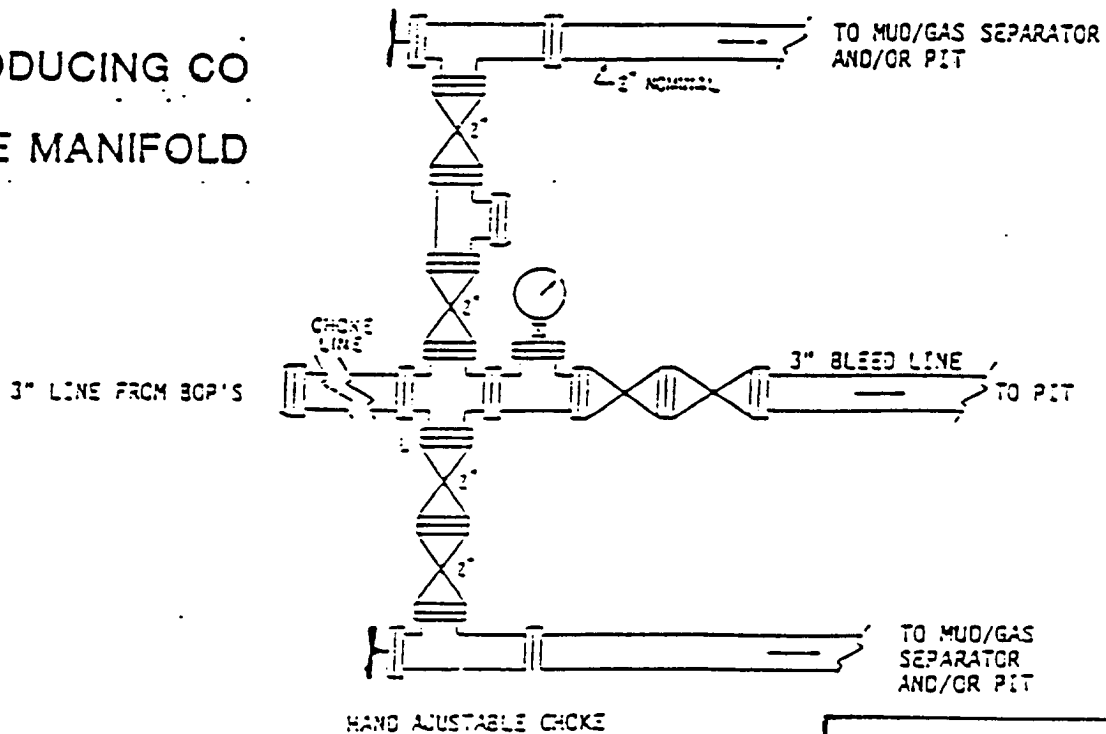


EXHIBIT "E-1"
CHOKE MANIFOLD & COLSING UNIT

POGO PRODUCING COMPANY
PECOS "33" FEDERAL # 1
UNIT "M" SECTION 33
T19S-R27E EDDY CO. NM

POGO PRODUCING CO
3M CHOKE MANIFOLD