

## District I

1625 N French Dr., Hobbs, NM 88240

## District II

1301 W. Grand Avenue, Artesia, NM 88210

## District III

1000 Rio Brazos Road, Aztec, NM 87410

## District IV

1220 S. St. Francis Dr., Santa Fe, NM 87505

State of New Mexico  
Energy Minerals and Natural Resources

Form C-101

June 16, 2001

## Oil Conservation Division

1220 South St. Francis Dr.  
Santa Fe, NM 87505

Submit to appropriate District Office

RECEIVED

MAR 12 2010

NMOCD ARTESIA

☐ AMENDED REPORTAPPLICATION FOR PERMIT TO DRILL, RE-ENTER, DEEPEN,  
PLUGBACK, OR ADD A ZONE

<sup>1</sup> Operator Name and Address Lime Rock Resources A, L.P. 1111 Bagby St. Suite 4600 Houston, TX 77002		<sup>2</sup> OGRID Number 255333
<sup>3</sup> Property Code 305464	<sup>5</sup> Property Name Marathon 25 State	<sup>3</sup> API Number 30 - 015-37695
<sup>9</sup> Proposed Pool 1 Red Lake; Glorieta-Grayburg-SA (51300) /		<sup>10</sup> Proposed Pool 2

<sup>7</sup> Surface Location

UL or lot no	Section	Township	Range	Lot Idn	Feet from the	North/South line	Feet from the	East/West line	County
E	25	17-S	28-E		2310	North	330	West	Eddy

<sup>8</sup> Proposed Bottom Hole Location If Different From Surface

UL or lot no	Section	Township	Range	Lot Idn	Feet from the	North/South line	Feet from the	East/West line	County
--------------	---------	----------	-------	---------	---------------	------------------	---------------	----------------	--------

## Additional Well Information

<sup>11</sup> Work Type Code N	<sup>12</sup> Well Type Code O	<sup>13</sup> Cable/Rotary Rotary	<sup>14</sup> Lease Type Code S	<sup>15</sup> Ground Level Elevation 3665'
<sup>16</sup> Multiple N	<sup>17</sup> Proposed Depth 3,700'	<sup>18</sup> Formation San Andres	<sup>19</sup> Contractor United Drilling	<sup>20</sup> Spud Date 5/31/10

<sup>21</sup> Proposed Casing and Cement Program

Hole Size	Casing Size	Casing weight/foot	Setting Depth	Sacks of Cement	Estimated TOC
12 1/4"	8 5/8"	24#	420'	325 sx "C"+ add	Surface
7 7/8"	5 1/2"	15.5#	3,500'	400 sx 35/65 Poz/C	
				Tail 400 sx "C"	Surface

<sup>22</sup> Describe the proposed program. If this application is to DEEPEN or PLUG BACK, give the data on the present productive zone and proposed new productive zone. Describe the blowout prevention program, if any. Use additional sheets if necessary.

Lime Rock Resources A, L.P. proposes to drill/test the San Andres formation. Approximately 420' will be drilled with fresh water, then set and cement 8 5/8" surface casing, to 420'.

Drill 7 7/8" hole to T.D. at approx. 3,500'. Run Oil logs. Set 5 1/2" casing to T.D. and cement will be circulated back to surface.

Will perforate the San Andres formation and stimulate, as necessary, for optimum production. Produce well by flowing or pumping.

H2S levels are not expected to be high enough to require an H2 S program.

See Exhibit "A" for BOP.

<sup>23</sup> I hereby certify that the information given above is true and complete to the best of my knowledge and belief.

Signature.

*George R. Smith*

Printed name:  
George R. Smith

Title:  
Agent for Lime Rock Resources A, L.P..

E-mail Address:  
gr.smith1@hotmail.com

Date:  
3/10/10

Phone:  
575-623-4940

## OIL CONSERVATION DIVISION

Approved by

Title

Approval Date.

3/23/2010

Expiration Date.

3/23/2012

Conditions of Approval Attached ☐

DISTRICT I  
1625 N. FRENCH DR., HOBBS, NM 88240

DISTRICT II  
1301 W. GRAND AVENUE, ARTESIA, NM 88210

DISTRICT III  
1000 RIO BRAZOS RD., AZTEC, NM 87410

DISTRICT IV  
11885 S. ST. FRANCIS DR., SANTA FE, NM 87505

State of New Mexico  
Energy, Minerals and Natural Resources Department

OIL CONSERVATION DIVISION

11885 SOUTH ST. FRANCIS DR.  
Santa Fe, New Mexico 87505

Form C-102

Revised October 12, 2005  
Submit to Appropriate District Office  
State Lease - 4 Copies  
Fee Lease - 3 Copies

WELL LOCATION AND ACREAGE DEDICATION PLAT

☐ AMENDED REPORT

API Number <b>30-015-37695</b>	Pool Code <b>51300</b>	Pool Name <b>Red Lake; QN-GB-SA</b>
Property Code <b>305464</b>	Property Name <b>MARATHON 25</b>	Well Number <b>30</b>
OGRID No. <b>255333</b>	Operator Name <b>LIME ROCK RESOURCES A, L.P.</b>	Elevation <b>3665'</b>

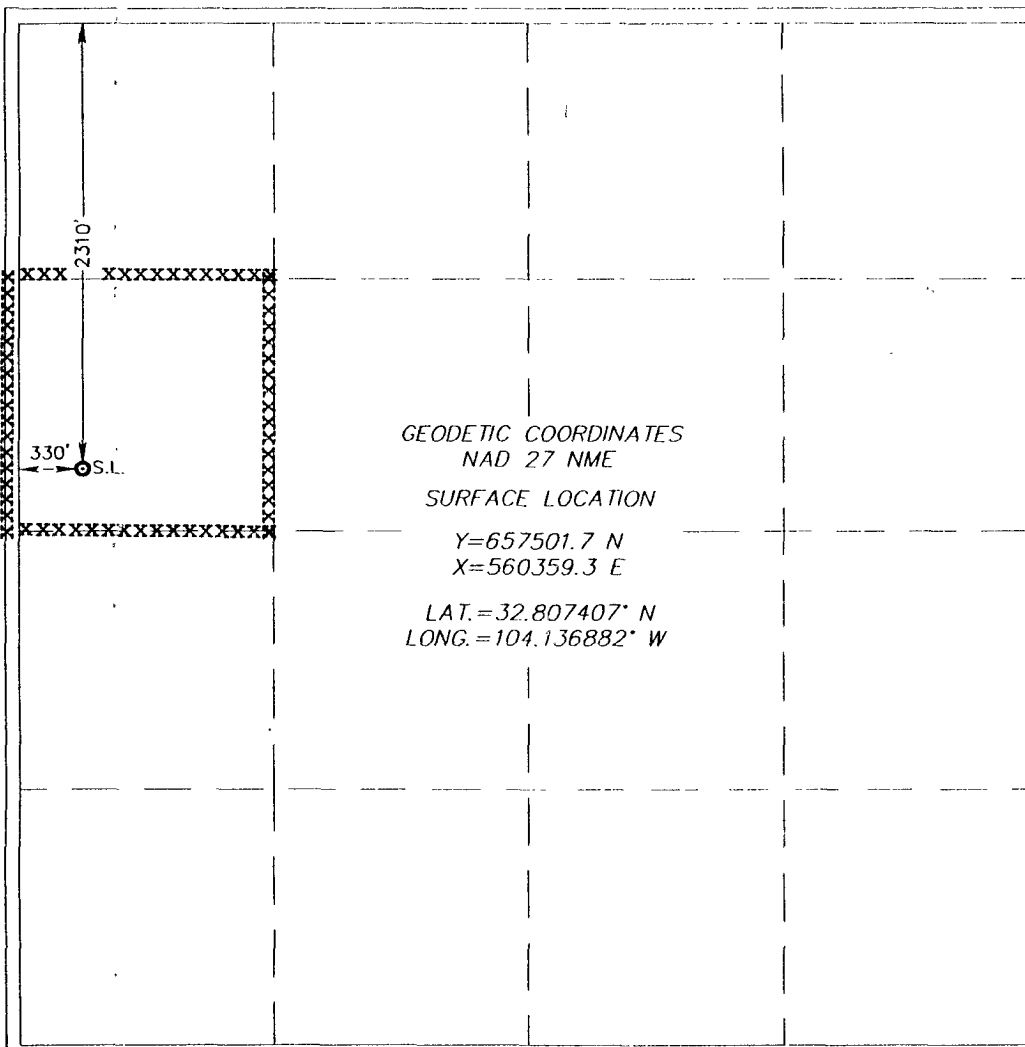
Surface Location

UL or lot No. <b>E</b>	Section <b>25</b>	Township <b>17-S</b>	Range <b>28-E</b>	Lot Idn	Feet from the <b>2310</b>	North/South line <b>NORTH</b>	Feet from the <b>330</b>	East/West line <b>WEST</b>	County <b>EDDY</b>
---------------------------	----------------------	-------------------------	----------------------	---------	------------------------------	----------------------------------	-----------------------------	-------------------------------	-----------------------

Bottom Hole Location If Different From Surface

UL or lot No.	Section	Township	Range	Lot Idn	Feet from the	North/South line	Feet from the	East/West line	County
Dedicated Acres <b>40</b>	Joint or Infill	Consolidation Code	Order No.						

NO ALLOWABLE WILL BE ASSIGNED TO THIS COMPLETION UNTIL ALL INTERESTS HAVE BEEN CONSOLIDATED  
OR A NON-STANDARD UNIT HAS BEEN APPROVED BY THE DIVISION



OPERATOR CERTIFICATION

I hereby certify that the information herein is true and complete to the best of my knowledge and belief, and that this organization either owns a working interest or unleased mineral interest in the land including the proposed bottom hole location or has a right to drill this well at this location pursuant to a contract with an owner of such mineral or working interest, or to a voluntary pooling agreement or a compulsory pooling order heretofore entered by the division.

*George R. Smith* 3/10/10  
Signature Date

George R. Smith, POA agent  
Printed Name

SURVEYOR CERTIFICATION

I hereby certify that the well location shown on this plat was plotted from field notes of actual surveys made by me or under my supervision, and that the same is true and correct to the best of my belief.

JANUARY 29, 2010

Date Surveyed  
Signature & Seal of Professional Surveyor

*Gary G. Eidson* 2/5/10  
10.11.0115

Certificate No. GARY G. EIDSON 12641  
RONALD J. EIDSON 3239

# **BOP DIAGRAM 3000# SYSTEM**

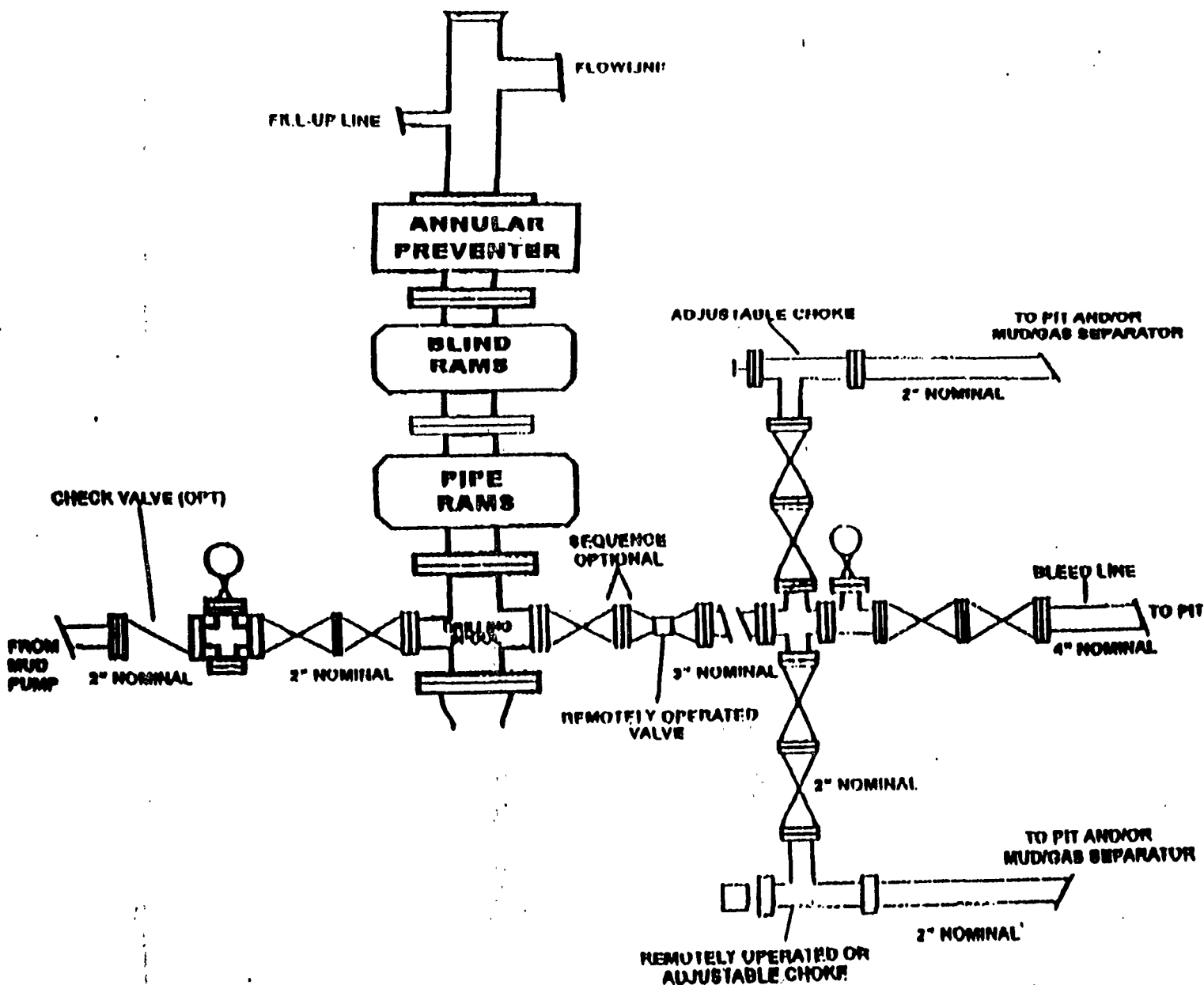


EXHIBIT "A"  
LIME ROCK RESOURCES A, L.P.  
BOP Specifications