

Submit 1 Copy To Appropriate District  
Office  
District I  
1625 N French Dr, Hobbs, NM 88240  
District II  
1301 W Grand Ave, Artesia, NM 88210  
District III  
1000 Rio Brazos Rd., Aztec, NM 87410  
District IV  
1220 S St Francis Dr, Santa Fe, NM  
87505

State of New Mexico  
Energy, Minerals and Natural Resources

Form C-103  
October 13, 2009

RM

OIL CONSERVATION DIVISION  
1220 South St. Francis Dr.  
Santa Fe, NM 87505

WELL API NO.  
30-015-27098

5. Indicate Type of Lease  
STATE ☒ FEE ☐

6. State Oil & Gas Lease No.  
E-10167

7. Lease Name or Unit Agreement Name  
NDDUP Unit

8. Well Number  
124

9. OGRID Number  
025575

10. Pool name or Wildcat  
Dagger Draw; Upper Penn, North

RECEIVED  
JUN - 8 2010  
NMOCD ARTESIA

SUNDRY NOTICES AND REPORTS ON WELLS

(DO NOT USE THIS FORM FOR PROPOSALS TO DRILL OR TO DEEPEN OR PLUG BACK TO A DIFFERENT RESERVOIR USE "APPLICATION FOR PERMIT" (FORM C-101) FOR SUCH PROPOSALS)

1. Type of Well: Oil Well ☒ Gas Well ☐ Other

2. Name of Operator  
Yates Petroleum Corporation

3. Address of Operator  
105 South Fourth Street, Artesia, NM 88210

4. Well Location  
Unit Letter L : 1980 feet from the South line and 860 feet from the West line  
Section 29 Township 19S Range 25E NMPM Eddy County

11. Elevation (Show whether DR, RKB, RT, GR, etc.)  
3532'GR

12. Check Appropriate Box to Indicate Nature of Notice, Report or Other Data

NOTICE OF INTENTION TO:

PERFORM REMEDIAL WORK ☐ PLUG AND ABANDON ☒  
TEMPORARILY ABANDON ☐ CHANGE PLANS ☐  
PULL OR ALTER CASING ☐ MULTIPLE COMPL ☐  
DOWNHOLE COMMINGLE ☐

OTHER: ☐

SUBSEQUENT REPORT OF:

REMEDIAL WORK ☐ ALTERING CASING ☐  
COMMENCE DRILLING OPNS. ☐ P AND A ☐  
CASING/CEMENT JOB ☐

OTHER: ☐

13. Describe proposed or completed operations. (Clearly state all pertinent details, and give pertinent dates, including estimated date of starting any proposed work). SEE RULE 19.15.7.14 NMAC. For Multiple Completions: Attach wellbore diagram of proposed completion or recompletion.

Yates Petroleum Corporation plans to plug and abandon this well as follows:

1. NU BOP. Rig up any safety equipment as needed. No casing recovery will be attempted.
2. Set a CIBP at 7620' with 35' cement on top. This will place a plug over open Canyon perforations.
3. Spot a 160' cement plug from 5679'-5839'. This will leave a plug across the Wolfcamp top.
4. Spot a 140' cement plug from 3701'-3841'. This will leave a plug across Bone Spring top.
5. Spot a 120' cement plug from 2166'-2286'. This will leave a plug across Glorieta top.
6. Spot a 150' cement plug from 1000'-1150'. WOC and tag plug, reset if necessary. This will leave a plug across surface casing shoe.
7. Spot a 150' cement plug to surface. WOC and tag plug, reset if necessary. This will leave a 150' surface plug.
8. Remove all surface equipment and weld dry hole marker per regulations.

Due to the volume of wells we currently have plans to plug, both State/Fee and Federal, Yates Petroleum respectfully requests a time frame of 1 year to have commenced plugging operations and for this notice of intent to be in affect

\* Required. D.V. Tool Cmt Plug. 5136' - 5236'

Spud Date:

Rig Release Date:

I hereby certify that the information above is true and complete to the best of my knowledge and belief.

SIGNATURE Tina Huerta TITLE Regulatory Compliance Supervisor DATE June 4, 2010

Type or print name Tina Huerta E-mail address: tinah@yatespetroleum.com PHONE: 575-748-4168

For State Use Only

APPROVED BY: [Signature] TITLE Approval Granted providing work DATE 6/9/2010

Conditions of Approval (if any):

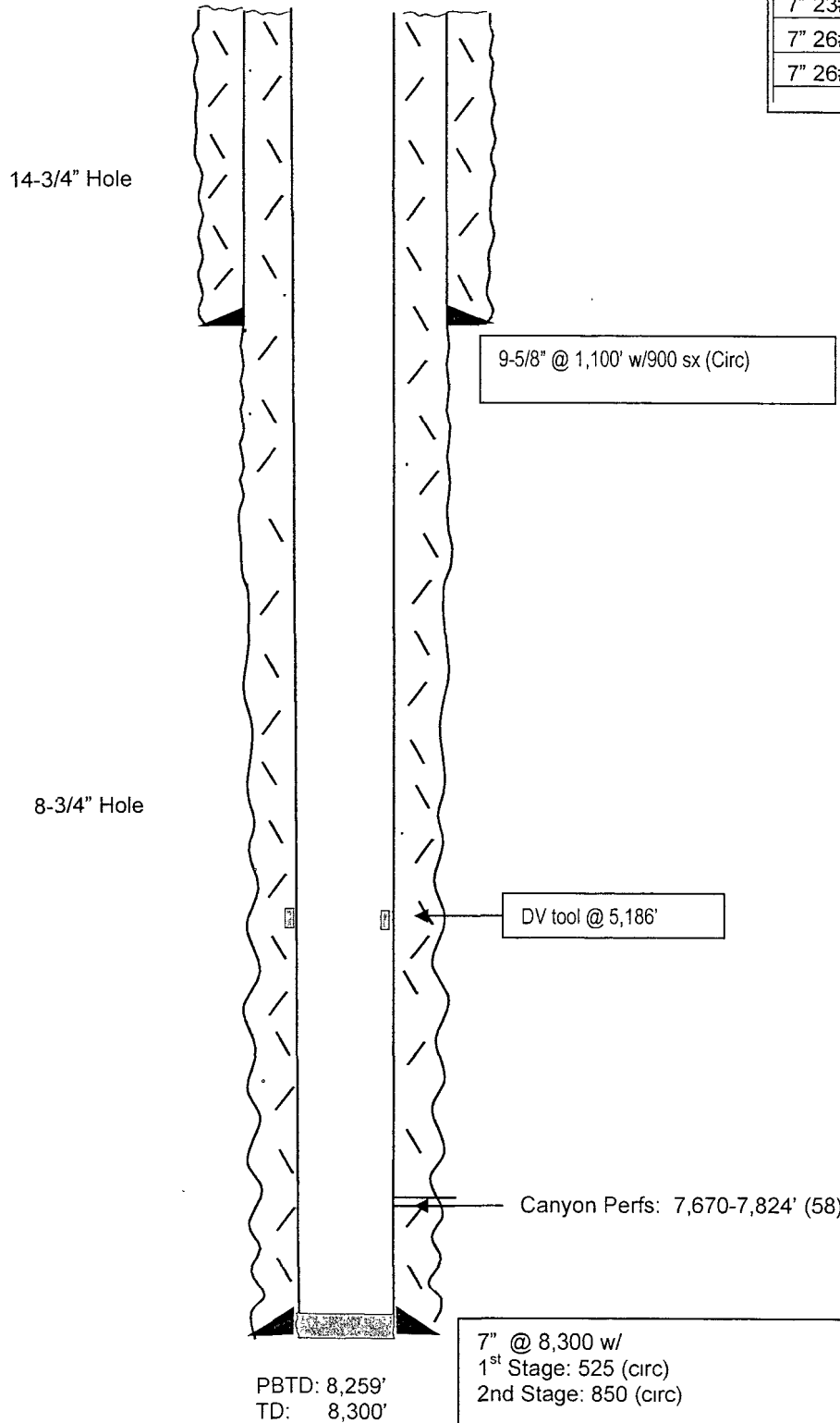
is complete by 6/9/2011

WELL NAME: NDDUP Unit #124 FIELD: Dagger Draw  
 LOCATION: 1,980' FSL & 860' FWL of Section 29-19S-25E Eddy Co., NM  
 GL: 3,532' ZERO: 18' KB: 3,572'  
 SPUD DATE: 11/21/92 COMPLETION DATE: 12/26/92  
 COMMENTS: API No : 30-015-27098  
 (Formerly Boyd X State Com #1)

# CASING PROGRAM

9-5/8" 36# J-55		1,100'
7" 26# J-55 LT&C (1,130')		
7" 23# J-55 LT&C (3,760')		
7" 26# J-55 LT&C (2,752')		
7" 26# N-80 LT&C (658')		8,300'

**Before**



## TOPS

SA 710'  
 Glorieta 2,236'  
 BS 3,791'  
 WC 5,789'  
 Canyon Dolo 7,668'  
 B. Dolo 8,008'

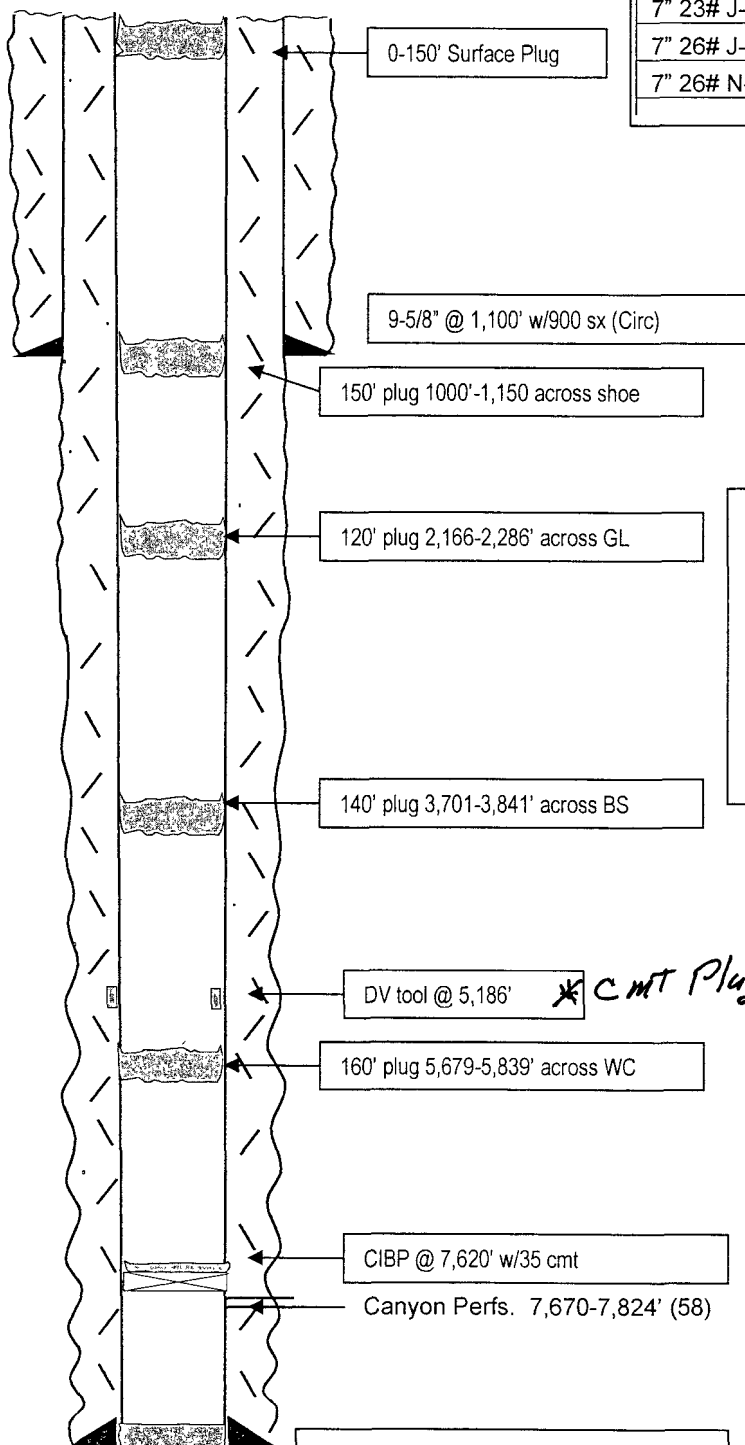
**Not to Scale**  
 2/24/10  
 DC/Hill

WELL NAME: NDDUP Unit #124 FIELD: Dagger Draw  
 LOCATION: 1,980' FSL & 860' FWL of Section 29-19S-25E Eddy Co., NM  
 GL: 3,532' ZERO: 18' KB: 3,572'  
 SPUD DATE: 11/21/92 COMPLETION DATE: 12/26/92  
 COMMENTS: API No.: 30-015-27098  
(Formerly Boyd X State Com #1)

# CASING PROGRAM

9-5/8" 36# J-55	<u>1,100'</u>
7" 26# J-55 LT&C (1,130')	
7" 23# J-55 LT&C (3,760')	
7" 26# J-55 LT&C (2,752')	
7" 26# N-80 LT&C (658')	<u>8,300'</u>

14-3/4" Hole



8-3/4" Hole

**After**

## TOPS

SA	710'
Glorieta	2,236'
BS	3,791'
WC	5,789'
Canyon Dolo	7,668'
B. Dolo	8,008'

PBTD: 8,259'  
 TD: 8,300'

7" @ 8,300 w/  
 1<sup>st</sup> Stage: 525 (circ)  
 2nd Stage: 850 (circ)

**Not to Scale**  
 2/24/10  
 DC/Hill