

District I  
1625 N. French Dr., Hobbs, NM 88240  
District II  
1301 W. Grand Avenue, Artesia, NM 88210  
District III  
1000 Rio Brazos Road, Aztec, NM 87410  
District IV  
1220 S. St Francis Dr., Santa Fe, NM 87505

State of New Mexico  
Energy Minerals and Natural Resources

Form C-401  
June 16, 2008

Oil Conservation Division  
1220 South St. Francis Dr.  
Santa Fe, NM 87505

RECEIVED  
JUN 25 2010  
NMOCD ARTESIA  
Submit to appropriate District Office  
 AMENDED REPORT

**APPLICATION FOR PERMIT TO DRILL, RE-ENTER, DEEPEN, PLUGBACK, OR ADD A ZONE**

<sup>1</sup> Operator Name and Address BURNETT OIL CO., INC. 801 CHERRY ST. UNIT #9 FORT WORTH, TEXAS 76102		<sup>2</sup> OGRID Number 003080
		<sup>3</sup> API Number 30-015-31806
<sup>3</sup> Property Code 28024	<sup>5</sup> Property Name POWER 31 FEDERAL	<sup>6</sup> Well No 3
<sup>9</sup> Proposed Pool 1 SWD-WOLFCAMP (96135) ✓		<sup>10</sup> Proposed Pool 2

<sup>7</sup> Surface Location

UL or lot no	Section	Township	Range	Lot Idn	Feet from the 1980'	North/South line	Feet from the 660'	East/West line	County
H	31	17S	30E		1980'	NORTH	660'	EAST	EDDY

<sup>8</sup> Proposed Bottom Hole Location If Different From Surface

UL or lot no	Section	Township	Range	Lot Idn	Feet from the	North/South line	Feet from the	East/West line	County
--------------	---------	----------	-------	---------	---------------	------------------	---------------	----------------	--------

Additional Well Information

<sup>11</sup> Work Type Code E	<sup>12</sup> Well Type Code S	<sup>13</sup> Cable/Rotary RELIABLE W/O RIG	<sup>14</sup> Lease Type Code FEDERAL	<sup>15</sup> Ground Level Elevation 3719'
<sup>16</sup> Multiple NO	<sup>17</sup> Proposed Depth 11,405'	<sup>18</sup> Formation WOLFCAMP REEF	<sup>19</sup> Contractor	<sup>20</sup> Spud Date EST MAY 15, 2010

<sup>21</sup> Proposed Casing and Cement Program

Hole Size	Casing Size	Casing weight/foot	Setting Depth	Sacks of Cement	Estimated TOC
17-1/2"	13-3/8"	48# H	520'	782 SKS	SRFC
12-1/4"	8-5/8"	32# J	3920'	1830 SKS	SRFC
7-7/8"	5-1/2"	17# HCP	11,875'	2095 SKS	2916'

<sup>22</sup> Describe the proposed program. If this application is to DEEPEN or PLUG BACK, give the data on the present productive zone and proposed new productive zone Describe the blowout prevention program, if any. Use additional sheets if necessary.

THIS WELL WAS A MORROW TEST AND WAS DRY. IT WAS PLUGGED BACK AND THE WOLFCAMP WAS PERFORATED AND TESTED AND FOUND DRY. THIS WELLBORE WAS P&A. THIS PROCEDURE WILL INCLUDE DRILLING OUT ALL PLUGS TO PBTD OF 11,405'. THE CURRENT NONPRODUCTIVE WOLFCAMP PERFS (8548' TO 8588') WILL BE LEFT OPEN AND WOLFCAMP REEF PERFS FROM 8800' TO 9400' WILL BE ADDED. A SERVICE UNIT WILL BE RIGGED UP, A DOUBLE RAM (1 SET OF BLIND RAMS & 1 SET PIPE RAMS) 2000 PSI BOP WILL BE NIPPLED UP TO PERFORM THE DRILL OUT.

SWD # 1220

<sup>23</sup> I hereby certify that the information given above is true and complete to the best of my knowledge and belief.

Signature: *Mark A. Jacoby*

Printed name:  
MARK A. JACOBY

Title  
ENGINEERING MANAGER

E-mail Address:

Date: *6/23/2010*

Phone:  
(817) 332-5108

OIL CONSERVATION DIVISION

Approved by: *Jacqueline Reem*  
Title: *Geologist*

Approval Date: *7/22/2010* Expiration Date:

Conditions of Approval Attached

6666

TO: NMOCD- ARTESIA, NEW MEXICO  
FROM: JIM ARLINE (817) 332-5108  
DATE: JUNE 23, 2010

*JHA*

SUBJECT: Power 31 Federal #3 Federal Lease NMNM98824  
Unit G, 2610' FNL, 2310' FEL  
Eddy County, New Mexico  
DISPOSAL LINE WILL RUN FROM NMLC030570A to NMNM98824  
Sec 13 & 24, T17S, R30E and SEC 19, 30 & 31, T17SW, R31E

GENTLEMEN:

We have included the plan filed with the Bureau of Land Management for this well. A portion of the flowline to be laid is in Sec 19 & 30, T17S, R31E will be State of NM R-O-W (see page 3 of 4 of the Basin Survey plat.) We are also working with the New Mexico Department of Transportation for the U.S. Highway 82 required boring. The C108 was filed on 4/09/2010 with OCD in Santa Fe.

BURNETT PLAZA - SUITE 1500  
801 CHERRY STREET - UNIT #9

BURNETT OIL CO., INC.

FORT WORTH, TX 76102-6881  
(817) 332-5108

BURNETT OIL CO., INC.

WELL LISTING REPORT FOR WATER DISPOSAL TO WATER PLANT

PRODUCTION MONTH: MARCH 2010

LEASE: NEW MEXICO LEASES COUNTY/STATE: EDDY CO., N.M.

	WELL NAME	PROD	INJ	WORKOVER	SHUT-IN	DRLG	REMARKS	REASON DOWN	API #
	<b>GRAYBURG JACKSON (SAN ANDRES) UNIT</b>								
53	GJSAU 5	X							30-015-04311
53	GJSAU 7								30-015-04285
53	GJSAU 9								30-015-04149
53	GJSAU 13		X						30-015-04145
53	GJSAU 14	X							30-015-04136
53	GJSAU 16								30-015-04135
53	GJSAU 21	X							30-015-04154
53	GJSAU 22		X						30-015-04148
53	GJSAU 27								30-015-04134
53	GJSAU 29	X							30-015-04146
53	GJSAU 30	X							30-015-04133
53	GJSAU 31	X							30-015-04142
53	GJSAU 34								30-015-04127
53	GJSAU 35		X						30-015-04126
53	GJSAU 36	X							30-015-04128
53	GJSAU 37		X						30-015-04129
53	GJSAU 38	X							30-015-04130
53	GJSAU 39	X							30-015-20207
53	GJSAU 47	X							30-015-23772
53	GJSAU 48	X							30-015-26970
	<b>STEVENS A BATTERY</b>								
2171	STEVENS A # 3	X							30-015-04143
1757	STEVENS A # 4	X							30-015-04144
1735	STEVENS A # 7	X							30-015-21830
2333	STEVENS A #9	X					YESO		30-015-32441
2396	STEVENS A #10	X					YESO/LSA		30-015-32793
2570	STEVENS A #11	X					YESO		30-015-33131
2714	STEVENS A #12	X					YESO		30-015-34225
2794	STEVENS A #13H	X					YESO		30-015-34846
2869	STEVENS A #14	X					YESO		30-015-35320
2870	STEVENS A #15	X					YESO		30-015-35321
2995	STEVENS A #16H	X					YESO		30-015-36146
	<b>JACKSON A TANK BATTERY</b>								
2170	JACKSON A # 8	X							30-015-04137
1725	JACKSON A # 9	X							30-015-04309
1722	JACKSON A # 10	X							30-015-04310
1732	JACKSON A # 11	X							30-015-04138
1995	JACKSON A # 17	X					YESO		30-015-30523
2028	JACKSON A # 18	X					YESO		30-015-31671
2030	JACKSON A # 20 & H	X					YESO		30-015-31670
2149	JACKSON A # 21	X					YESO		30-015-32034
2150	JACKSON A # 22	X					YESO		30-015-32066
2151	JACKSON A # 23	X					YESO		30-015-32114
2152	JACKSON A # 24	X					YESO		30-015-32067
2401	JACKSON A # 25	X					YESO		30-015-32683
2433	JACKSON A # 26	X					YESO		30-015-32848
2767	JACKSON A # 27	X					YESO		30-015-34765
2768	JACKSON A # 28	X					YESO		30-015-34766
2610	JACKSON A # 29	X					YESO		30-015-33489
2671	JACKSON A #31H	X					YESO		30-015-34000
2710	JACKSON A #34	X					YESO		30-015-34223
2755	JACKSON A #35	X					YESO		30-015-34502
2873	JACKSON A #36	X					YESO		30-015-35284
	04/07/10	42	4	0	0	0	46	WELLS	

BURNETT OIL CO., INC.

WELL LISTING REPORT FOR WATER DISPOSAL TO WATER PLANT

PRODUCTION MONTH: MARCH 2010

LEASE: NEW MEXICO LEASES

COUNTY/STATE: EDDY CO., N.M.

	WELL NAME	PROD	INJ	WORKOVER	SHUT-IN	DRLG	REMARKS	REASON DOWN	API #
	<b>JACKSON A2 BATTERY</b>								
203	JACKSON A#37	X							30-015-37494
2177	<b>JACKSON B-4 TANK BATTERY</b>								
1701	JACKSON B # 3	X							30-015-04313
57	JACKSON B # 12	X							30-015-04314
57	JACKSON B # 13	X							30-015-04315
57	JACKSON B # 14	X							30-015-04316
57	JACKSON B # 16	X							30-015-04317
57	JACKSON B # 25	X							30-015-10123
876	JACKSON B # 35	X							30-015-27750
1341	JACKSON B # 36	X							30-015-27921
1573	JACKSON B # 37	X							30-015-28641
1713	JACKSON B # 39	X							30-015-20209
1752	JACKSON B # 40	X							30-015-21831
--	<b>JACKSON B-5 TANK BATTERY</b>								
58	JACKSON B # 4		X						30-015-04036
58	JACKSON B # 5	X							30-015-04037
58	JACKSON B # 15								30-015-04038
58	JACKSON B # 17	X							30-015-04039
58	JACKSON B # 18	X							30-015-04040
58	JACKSON B # 19		X						30-015-04041
58	JACKSON B # 20								30-015-04042
58	JACKSON B # 30		X						30-015-21386
58	JACKSON B # 32		X						30-015-22621
58	JACKSON B # 33	X							30-015-23807
58	JACKSON B # 38	X							30-015-04130
	<b>JACKSON B 6 YESO BATTERY</b>								
2535	JACKSON B #41						APPROVED T&A		30-015-33133
2790	JACKSON B #44								30-015-34864
2867	JACKSON B #45	X							30-015-35398
3004	JACKSON B #46		X				DISPOSAL WELL		30-015-36306
	<b>STEVENS B BATTERY</b>								
2604	STEVENS B #3	X					YESO		30-015-33132
2793	STEVENS B #4	X					YESO		30-015-34847
	<b>GISSLER TANK BATTERY</b>								
60	GISSLER # 1								30-015-25539
2953	GISSLER # 2	X							30-015-36003
	04/07/10	21	5	0		0	26	WELLS	

BURNETT OIL CO., INC.

WELL LISTING REPORT FOR WATER DISPOSAL TO WATER PLANT

PRODUCTION MONTH: MARCH 2010

LEASE: NEW MEXICO LEASES COUNTY/STATE: EDDY CO., N.M.

	WELL NAME	PROD	INJ	WORKOVER	SHUT-IN	DRLG	REMARKS	REASON DOWN	API #
	<b>GISSLER A TANK BATTERY</b>								
61	GISSLER A 12		X						30-015-25682
62	GISSLER A 13		X						30-015-25683
63	GISSLER A 14	X							30-015-25765
64	GISSLER A 15	X							30-015-25875
2836	GISSLER A 29	X					LH PADDOCK/YESO		30-015-31111
2868	GISSLER A 30	X					LH PADDOCK/YESO		30-015-35336
3067	GISSLER A 34	X							30-015-36818
	<b>GISSLER A2 TANK BATTERY</b>								
1731	GISSLER A 7	X							30-015-04152
1682	GISSLER A 8	X							30-015-04286
1683	GISSLER A 9	X							30-015-04153
1822	GISSLER A 16	X					LOWER GRAYBURG ONLY		30-015-30275
2339	GISSLER A 17	X					LSA/LH PADDOCK		30-015-32447
2350	GISSLER A 18	X					LSA/LH PADDOCK/		30-015-32448
2404	GISSLER A 19	X					LH PADDOCK/YESO		30-015-32835
2403	GISSLER A 20	X					LH PADDOCK/YESO		30-015-32846
2569	GISSLER A 21	X					LH PADDOCK/YESO		30-015-33243
2530	GISSLER A 22	X					LH PADDOCK/YESO		30-015-33124
2571	GISSLER A 23	X					LH PADDOCK/YESO		30-015-33123
2636	GISSLER A 24	X					LH PADDOCK/YESO		30-015-33498
2693	GISSLER A 25	X					LH PADDOCK/YESO		30-015-34021
2758	GISSLER A 26	X					LH PADDOCK/YESO		30-015-34503
2792	GISSLER A 27H	X					LH PADDOCK/YESO		30-015-34850
2791	GISSLER A 28H	X					LH PADDOCK/YESO		30-015-34909
2954	GISSLER A 31	X					LH PADDOCK/YESO		30-015-36035
2955	GISSLER A 32	X					LH PADDOCK/YESO		30-015-36036
3036	GISSLER A 33H	X					LH PADDOCK/YESO		30-015-36654
	<b>GISSLER B2 TANK BATTERY</b>								
1724	GISSLER B 2	X							30-015-04308
46	GISSLER B 5	X							30-015-04300
46	GISSLER B 11	X							30-015-04301
46	GISSLER B 12	X							30-015-04302
284	GISSLER B 29	X							30-015-26985
1340	GISSLER B 30	X							30-015-27922
	04/07/10	30	2	0	0	0	32	WELLS	

BURNETT OIL CO., INC.

WELL LISTING REPORT FOR WATER DISPOSAL TO WATER PLANT

PRODUCTION MONTH: MARCH 2010

LEASE: NEW MEXICO LEASES COUNTY/STATE: EDDY CO., N.M.

API #

WELL NAME	PROD	INJ	WORKOVER	SHUT-IN	DRLG	REMARKS	REASON DOWN	API #
2175								
47 GISSLER B3 TANK BATTERY								
47 GISSLER B 6	X					B3-1 GRAY/SA		30-015-04119
47 GISSLER B 7		X				B3-1		30-015-04120
47 GISSLER B 10	X					B3-1 GRAY/SA		30-015-04123
47 GISSLER B 14	X					B3-2		30-015-22004
47 GISSLER B 15	X					B3-3		30-015-22213
47 GISSLER B 16		X				B3-3		30-015-23771
47 GISSLER B 17	X					B3-1 GRAY/SA		30-015-24963
47 GISSLER B 18		X				B3-1		30-015-25224
47 GISSLER B 19	X					B3-1 GRAY/SA		30-015-25222
47 GISSLER B 20	X					B3-3		30-015-25221
47 GISSLER B 21		X				B3-2		30-015-25220
47 GISSLER B 22		X				B3-1		30-015-25540
47 GISSLER B 23		X				B3-3		30-015-25518
662 GISSLER B 24	X					B3-3		30-015-25684
48 GISSLER B 25	X					B3-3		30-015-25685
49 GISSLER B 26		X				B3-3		30-015-25763
50 GISSLER B 27		X				B3-2		30-015-25987
51 GISSLER B 28	X					B3-2		30-015-25988
2153 GISSLER B 31	X					B3-3 YESO		30-015-32200
2402 GISSLER B 32	X					B3-3 YESO		30-015-32754
2524 GISSLER B 33	X					B3-3 YESO		30-015-33125
2611 GISSLER B 34	X					B3-3 YESO		30-015-33517
2635 GISSLER B 35	X					B3-3 YESO		30-015-33495
2694 GISSLER B 36	X					B3-3 YESO		30-015-34022
2712 GISSLER B 37	X					B3-3 YESO		30-015-34688
2713 GISSLER B 38	X					B3-3 YESO		30-015-34359
2956 GISSLER B 40H	X					B3-1 LHP		30-015-36034
3014 GISSLER B 44	X					B3-1 LHP		30-015-36380
3006 GISSLER B 43	X					B3-3 YESO		30-015-36415
3069 GISSLER B 50	X					B3-3 YESO		30-015-36783
3068 GISSLER B 49	X					B3-1 LHP		30-015-36824
3124 GISSLER B 51	X					B3-1 LHP		30-015-37240
3125 GISSLER B 52	X					GB3-2 YESO		30-015-37241
3126 GISSLER B 53	X					GB3-2 YESO		30-015-37242
GISSLER B 55	X					B3-1 GRAY/SA		30-015-37243
GISSLER B 57	X					B3-1 GRAY/SA	NEW WELL	30-015-37493
04/07/10          28          8          0          0          0          36          WELLS								

TOTAL NEW MEXICO WELLS



**BURNETT OIL CO., INC. OPERATOR CERTIFICATION  
VERTICAL WOLFCAMP REEF SALTWATER DISPOSAL WELL RE-ENTRY  
FEDERAL LEASE NMNM 98824 UNIT H, 1980' FNL, 660' FEL, SECTION 31, T17S, R30E  
East, Eddy County, N.M**

**Operator's Representative:**

Burnett Oil Co., Inc. field representative responsible for compliance with the approved surface use and operations plan is:

Mr. Belton Mathews, District Supt.  
P.O. Box 188  
Loco Hills, New Mexico 88255  
Office phone: (575) 677-2313  
Home phone: (575) 746-8647  
Cellular phone: (575) 703-9601

I hereby certify that I, or persons under my direct supervision have inspected the drill site and access route; that I am familiar with the conditions that currently exist; that the statements made in this plan are to the best of my knowledge, true and correct; and that the work associated with operations proposed herein will be performed by Burnett Oil Co., Inc. and its contractors and subcontractors in conformity with this plan and the terms and conditions under which it is approved. This statement is subject to the provisions of 18 U.S.C. 1001 for the filing of a false statement.

Date: 6/22/2010

By Mark A. Jacoby  
Mark A. Jacoby  
Engineering Manager



BURNETT OIL CO., INC.

VERTICAL WOLFCAMP REEF SALTWATER DISPOSAL WELL RE-ENTRY WELL  
 FEDERAL LEASE NMNM 98824 UNIT H 1980' FNL, 660' FEL, Section 31, Township 17 South, Range  
 31 East, Eddy County, N.M. (POWERS 31 FEDERAL #3 API#30-015-31806)

**A: RE-ENTRY PROGRAM**

**1. Geological Name of Formation with Estimated Depth:**

- a. Alluvium..... Surface
- b. Rustler..... 420'
- c. Yates ..... 1840'
- d. Seven Rivers... 2184'
- e. Queen..... 2222'
- c. Grayburg..... 2670' Oil
- d. San Andres.... 2985' Oil
- e. Bone Spring.... 5000'
- f. Wolfcamp..... 8450'
- g. Canyon ..... 9820'
- h. Strawn ..... 10672'
- i. Atoka .....10820'
- j. Total depth..... 11405' CIBP AND CEMENT IN PLACE

2. No other formations are expected to yield oil, gas or fresh water in measurable volumes. **We will drill out CIBP set @ 8528'. This plug was put in place on 3/24/2004. We will perforate the 5-1/2" casing in the WolfCamp Reef zone from Approx 8800' to 9400'.**

**THE FOLLOWING CASING IS CEMENTED IN PLACE IN THIS RE-ENTRY WELLBORE:**

<u>Hole Size</u>	<u>Interval</u>	<u>OD Csg</u>	<u>Weight</u>	<u>Collar</u>	<u>Grade</u>	<u>Collapse Design Factor</u>	<u>Burst Design Factor</u>	<u>Tension Design Factor</u>	<u>TOC</u>
17-1/2"	0' - 520'	13-3/8"	48#	ST&C	H40	2.88	1.27	11.27	SURF
12-1/4"	0' - 3920'	8-5/8"	32#	ST&C	J55	1.24	1.46	3.32	SURF
7-7/8"	0' - 600'	5-1/2"	17#	LT&C	HCP-110	2.09	2.09	1.92	
7-7/8"	600' - 9800'	5-1/2"	17#	LT&C	N80	1.14	1.30	1.80	
7-7/8"	9800' - 11875'	5-1/2"	17#	LT&C	HCP-110	2.09	2.09	1.92	2916'

**3. TUBING PROGRAM FOR RE-ENTRY: (ALL NEW API APPROVED MATERIAL.)**

**OD TBG Weight Collar Grade**

0'-8450' 3-1/2" 9.30# ULT FJ L80 W/CERAMKOTE INTERNAL COATING

4. **Cementing Program Not applicable. No casing is to be run.**

**5. Pressure Control Equipment:**

The blowout prevention equipment (BOPE) shown in **Drilling Exhibit E** and E1 will consist of a 2000 PSI Hydril Unit (annular) with hydraulic closing equipment. The equipment will comply with Onshore Order #2 and will be tested to 50% of rated working pressure (RWP), and maintained for at least 10 Minutes. The **8-5/8"** drilling head will be installed on the surface casing and in use continuously until (PB) total depth is reached. **We plan to use a service rig will be used to do the required work.**

**6. Proposed Mud Circulation System- NOT APPLICABLE**



7. **Auxiliary Well Control and Monitoring Equipment: NOT APPLICABLE**

8. **Hydrogen Sulfide Plan and Training:**

Based on our area testing H<sub>2</sub>S at 100 PPM has a radius of 139' and does not get off our well sites. There are no schools, residences, churches, parks, public buildings, recreation area or public within 2+ miles of our area.

**All personnel, whether regularly assigned, contracted, or employed on an unscheduled basis, will receive training from a qualified instructor in the following areas prior to commencing drilling operations on each well:**

- a. The hazards and characteristics of Hydrogen Sulfide (H<sub>2</sub>S).
- b. The proper use and maintenance of personal protective equipment and life support systems.
- c. The proper use of H<sub>2</sub>S detectors, alarms, warning systems, briefing areas, evacuation procedures and the prevailing wind.
- d. The proper techniques for first aid and rescue procedures.
- e. **ATTACHED HYDROGEN SULFIDE (H<sub>2</sub>S) CONTINGENCY PLAN DRILLING EXHIBIT A**
- f. **ATTACHED EMERGENCY CALL LIST FOR ANY ON SITE EMERGENCY DRILLING EXHIBIT B.**

**In addition, supervisory personnel will be trained in the following areas:**

- i. The effects of H<sub>2</sub>S on metal components. If high tensile tubulars are to be used, personnel will be trained in special maintenance requirements.
- ii. Corrective action and shut-in procedures when drilling or reworking a well, blowout prevention and well control procedures.
- iii. The contents and requirements of the H<sub>2</sub>S Drilling Operations Plan and the Public Protection Plan (if applicable.)

There will be an initial training session just prior to encountering a known or probable H<sub>2</sub>S zone (within 3 days or 500 feet) and weekly H<sub>2</sub>S and well control drills for all personnel in each crew. The initial training session shall include a review of the site specific H<sub>2</sub>S Drilling Operations Plan and the Public Protection Plan (if applicable). This plan shall be available at the well site. All personnel will be required to carry documentation that they have received the proper training.

**I. DRILLING OPERATIONS – H<sub>2</sub>S**

**a. Protective equipment for essential personnel:**

1. Mark II Surviveair (or equivalent) 30 minute units located in the dog house and at the primary briefing area (to be determined.)

**b. H<sub>2</sub>S detection and monitoring equipment:**

1. Three (3) portable H<sub>2</sub>S monitors positioned on location for best coverage and response. These units have warning lights at 10 PPM and warning lights and audible sirens when H<sub>2</sub>S levels of 15 PPM is reached. A digital display inside the doghouse shows current H<sub>2</sub>S levels at all three (3) locations.
2. An H<sub>2</sub>S Safety compliance set up is on location during all operations.

**c. Visual warning systems:**

1. Wind direction indicators will be positioned for maximum visibility.
2. Caution/Danger signs will be posted on roads providing direct access to location. Signs will be painted a high visibility yellow with black lettering of sufficient size to be readable at reasonable distance from the immediate location. Bilingual signs will be used when appropriate.

**d. Mud program: NOT APPLICABLE**

The mud program has been designed to minimize the volume of H<sub>2</sub>S circulated to the surface. Proper mud weight, safe drilling practices and the use of H<sub>2</sub>S scavengers will minimize hazards.

when penetrating H<sub>2</sub>S bearing zones.

**e. Communication:**

1. Cellular Telephone and/or 2-way radio will be provided at well site.
2. Landline telephone is located in our field office.

**f. Metallurgy:**

1. All drill strings, casings, tubing, wellheads, Hydril BOPS, drilling spools, kill lines, choke manifold, valves and lines will be suitable for H<sub>2</sub>S service.
2. All elastomers used for packing and seals shall be H<sub>2</sub>S trim.

**9. Logging, Coring and testing program:**

A CORRELATION LOG WILL BE RUN TO TIE BACK TO ORIGINAL LOGS. Baker Atlas Compensated Z-Densi/Compensated Neutron/GR log was original logs (Devon.)

**10. Potential Hazards:**

No abnormal pressures or temperatures are expected. There is known H<sub>2</sub>S in this area. The operator will comply with the provisions of Onshore Oil and Gas Order #6. No lost circulation is expected to occur. All personnel will be familiar with the safe operation of the equipment being used to drill this well. The maximum anticipated bottomhole pressure is 1000#. The maximum anticipated bottom hole temperature is 92°F

**11. Anticipated Start Date and Duration of Operation**

Location construction will begin after BLM has approved the APD and has approved the start of location work. We will also wait until we have the NMOCD approval of the C108 that has been submitted to them. Anticipated start date will be as soon as the location building work has been completed and the W/O rig is available to move to the location. Move in and drill out of the cement plugs is expected to take approx 15 days to complete the well and install the necessary surface equipment (pump, electricity, flowline and storage facility) to start water injection

**B: SURFACE USE PROGRAM**

**1. EXISTING ROADS:**

- a. The well site and elevation plat for the proposed well are reflected on the well site layout; Form C102. This well was staked by Topographic Land Surveyors in 1/16/2001 for the original drilling of this well bore. **A BLANK ORIGINAL C102 FOR SIGNATURE IS INCLUDED.**
- b. Location is shown on the original (DEVON) Vicinity Map (Surface Exhibit A.)
- c. Directions to location: from intersection of US Hwy #82 & CR 222 go South on CR 222 1.2 miles to lease road on right, then 1.1 miles west on this lease road to rebuilt road to well pad.

**2. New or Reconstructed Access Roads:**

- a. The well site layout, Form C-102 and Surface Exhibit A1, A1, A1A, A1B & A2 show the existing area. **An additional 1502' of access road will be required along the same path as the original road. (See Surface Exhibit A2.)**
- b. All construction material will be native caliche. It may be available at the proposed location. If unavailable on location or road, caliche will be hauled from nearest BLM approved caliche pit

**3. Location of existing wells:**

See attached **original (Devon) Surface Exhibit 4** (Burnett Exhibit A1, A1A) plat showing all wells within a 1 mile radius of the proposed well site. We have also included (BURNETT EXHIBIT A1B) our more recent 1/2 mile radius plat.

4. **Location of existing and/or proposed production facilities:**

Any saltwater tank storage that may be required will be at the water plant pad.

a. The well site may require electricity for the pump. We will contact the electric cooperative to provide the electric power poles and the electric line from their nearest connection. The routing and pole placement will be provided in their ROW application. All electrical installation will be done in accordance with all existing state and federal regulations.

b. Flowline (APPROX. 19,500') from our Loco Hills Water Plant(**LIST OF CURRENT WELLS INCLUDED**) to this new SALTWATER DISPOSAL WELL. (See Surface Exhibit B, C, C1, C2, C3 and C4 PLAT. The required DISPOSAL flowline will be laid, below ground, along approved R-O-W to this well site. All flowline will be 8" poly pipe **All required notification to surface owner and/or lessees will be done prior to any work.**

5. **Location and Type of Water Supply:**

All water to be used in drilling this well will be brine or fresh water transported by truck over existing and above proposed lease road from Loco Hills, New Mexico or produced water furnished from our existing waterflood facilities in the area. We may install a pump and lay a **temporary 2"** poly line on the lease from the battery to the rig for this drilling water.

6. **Construction Materials:**

All construction material for the roadway and well pad will be native caliche from the nearest BLM approved pit or from existing available deposits found on the location. All will be in accordance with the drilling stipulations for this well.

7. **Methods of Handling Waste Disposal:**

a. We will have steel tank (s) on location for any waste product during the drill out of these plugs.

All fluids will be hauled off location to a contracted off lease disposal location.

b. Trash, waste paper, garbage and junk will be placed in a portable, screened trash container on location. All trash and debris will be transported to an authorized off-lease disposal station within 30 days following the completion activities.

c. A properly maintained Porto-john will be provided for the crews during drilling and completion operations. All will be removed after all completion operations have ended.

d. No oil production is anticipated since this was a tested dry hole by the previous operator (Devon) but we will have a steel storage tank for proper handling.

e. Water produced during testing operations will be put in the steel frac. tanks until well is turned to active injection. Any produced water will be disposed of through one of our approved disposal methods.

8. **Ancillary Facilities:** There are no planned ancillary facilities for this well.

9. **Well Site Layout:**

Surface Exhibits show the relative location and dimensions of the well pad. Only minor differences, if any, in length and/or width of the well pad are anticipated, depending on which Service rig contractor is selected to drill out the well bore. **Partial pad site must be rebuilt for a service rig.**

10. **Plans for surface Reclamation:**

a. After drill out of some of the plugs and successful completion operations are finished, all equipment and other materials not required for normal production operations will be removed.

b. The pad size will be reduced to the amount required for operation of the producing/SWD well. This reduced portion will be restored to the BLM stipulations in section a.

d. If a well is abandoned, the surface location and unneeded road will be restored according to BLM stipulations within 90 days of final abandon and re-seeded with BLM (B) seed mix.

**11. Surface ownership:**

Most lands are owned by the U.S. Government and is administered by the Bureau of Land Management. A 3420.5 feet portion in Section 19 & 30, T17S, R31E (SURFACE EXHIBIT C3) is on State of New Mexico land. The surface is multiple uses with the primary use of the region for the production of oil and gas and the grazing of livestock.

**12. Other information:**

- a. The area surrounding the well site is grassland. The area is relatively flat with small hills and sand dunes. The topsoil is fine, deep sand underlain by caliche. Vegetation cover is generally sparse and consists of mesquite, yucca, shinnery oak and sparse native grasses. Wildlife in the area includes deer, coyotes, rabbits, rodents, reptiles, dove and quail.
- b. No permanent or live water is found in the general proximity of this area.
- c. No dwellings are found within two (2) miles of this location.
- d. There is intermittent cattle grazing and hunting in the area; however, the principal land use is for oil and gas production.
- e. We do not plan to repeat the archaeological clearance report since this report is in the BLM office in Carlsbad, N.M. file for the original approved drilling APD dated May 29, 2001.

**13. Bond Coverage:**

Current Bond is BLM Bond # NMB000197. The Surety Bond is #B000863. Both are effective May 21, 2004 and remain in place. A R-O-W Damage Bond #B005634 to the State of New Mexico dated May 7, 2010 is in place.

**District I**  
1625 N. French Dr., Hobbs, NM 88240

**District II**  
1301 W. Grand Avenue, Artesia, NM 88210

**District III**  
1000 Rio Brazos Rd., Aztec, NM 87410

**District IV**  
1220 S. St. Francis Dr., Santa Fe, NM 87505

State of New Mexico  
Energy, Minerals & Natural Resources Department  
**OIL CONSERVATION DIVISION**  
1220 South St. Francis Dr.  
Santa Fe, NM 87505

Form C-102  
Revised October 15, 2009  
Submit one copy to appropriate  
District Office

AMENDED REPORT

**WELL LOCATION AND ACREAGE DEDICATION PLAT**

<sup>1</sup> API Number 30-015-31806		<sup>2</sup> Pool Code		<sup>3</sup> Pool Name WOLFCAMP REEF SWD	
<sup>4</sup> Property Code 002391		<sup>5</sup> Property Name POWERS 31 FEDERAL SWD			<sup>6</sup> Well Number 3
<sup>7</sup> OGRID No. 03080		<sup>8</sup> Operator Name BURNETT OIL CO., INC.			<sup>9</sup> Elevation 3719'

<sup>10</sup> Surface Location

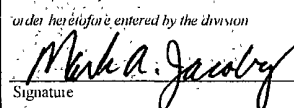
UL or lot no.	Section	Township	Range	Lot Idn	Feet from the	North/South line	Feet from the	East/West line	County
H	31	17S	31E		1980'	NORTH	660'	WEST	EDDY

<sup>11</sup> Bottom Hole Location If Different From Surface

UL or lot no.	Section	Township	Range	Lot Idn	Feet from the	North/South line	Feet from the	East/West line	County

<sup>12</sup> Dedicated Acres	<sup>13</sup> Joint or Infill	<sup>14</sup> Consolidation Code	<sup>15</sup> Order No.

No allowable will be assigned to this completion until all interests have been consolidated or a non-standard unit has been approved by the division.

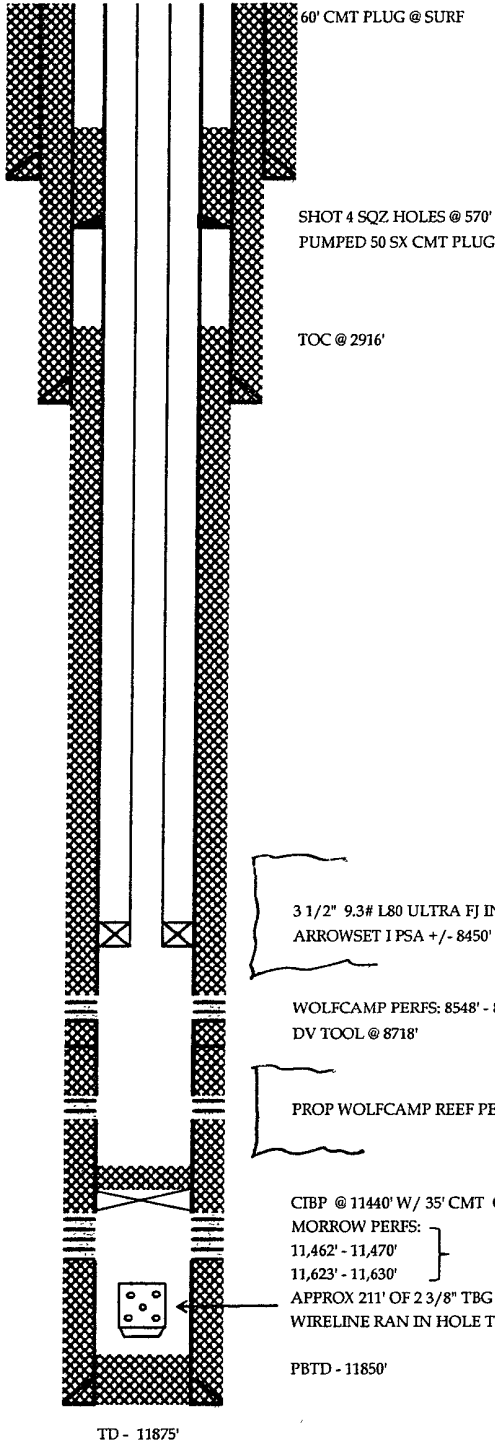
16					<sup>17</sup> <b>OPERATOR CERTIFICATION</b> I hereby certify that the information contained herein is true and complete to the best of my knowledge and belief, and that this organization either owns a working interest or unleased mineral interest in the land including the proposed bottom hole location or has a right to drill this well at this location pursuant to a contract with an owner of such a mineral or working interest, or to a voluntary pooling agreement or a compulsory pooling order heretofore entered by the division.  Signature Date 6/27/2010 MARK A JACOBY Printed Name
					Certificate Number



WELL NAME: Power 31 Federal 3  
 FIELD: CEDAR LAKE (MORROW GAS)  
 COUNTY/STATE: EDDY CO., NEW MEXICO  
 LOCATION: SL: UNIT H, 1980' FNL, 660' FEL  
SECTION 31, T17S, R31E

SPUD DATE: 8/13/2001 API # 30-015-31806  
 COMPL DATE: 11/21/2001 AFE # \_\_\_\_\_

PROPOSED



SURFACE CASING:  
 DEPTH: 520' SIZE: 13 3/8" WT: 48#  
 CEMENT: W/ 782 SX. CMT TO SURF

INTERMEDIATE CASING:  
 DEPTH: 3920' SIZE: 8 5/8" WT: 32#  
 CEMENT: CMT'D W/ 1830 SX, CMT TO SURF

PRODUCTION CASING:  
 DEPTH: 11875' SIZE: 5 1/2" WT: 17#  
 CEMENT: CMT'D W/ 2095 SX

TUBING:  
 DEPTH: 8450' SIZE: 3 1/2" WT: 9.3#  
 PUMP: \_\_\_\_\_

REMARKS:



BURNETT OIL CO., INC. EMERGENCY NOTIFICATION LIST

**Burnett's New Mexico Office** (575) 677-2313  
**Belton Mathews BOCI District Superintendent** CELL (575) 703-9601  
BURNETT OIL HOME OFFICE (817) 332-5108  
Mark Jacoby BOCI ENGINEERING MANAGER CELL (817) 312- 2751

**EDDY COUNTY SHERIFF** 911 OR (575) 746-9888  
**NEW MEXICO STATE POLICE** (575) 746-2701

Loco Hills Fire Department (VOLUNTEER ONLY) 911 OR (575) 677 2349  
For Medical and Fire (575) 746-2701 (ARTESIA)

Flight for Life Air Ambulance (LUBBOCK) (806) 743-9911  
Aerocare Air Ambulance (LUBBOCK) (806) 747-8923  
Med Flight Air Ambulance (ALBUQ) (505) 842-4433  
S B Med Svc Air Ambulance (ALBUQ) (505) 842-4949

US Bureau of Land Management Carlsbad (575) 361-2822 (575) 234-5972  
New Mexico Oil Conversation Division ARTESIA (575) 748-1283  
New Mexico Emergency Response Commission 24 HR (575) 827-9126  
New Mexico State Emergency Operation Center (575) 476-9635  
Local Emergency Planning Committee (Artesia) (575) 746-2122  
National Emergency Response Center (Washington, DC) (800) 424-8802

Boots & Coats IWC (800) 256-9688  
Cudd Pressure Control (432) 570-5300  
Halliburton Svc (575) 746-2757  
B J Svc (575) 746-2293

**THIS MUST BE POSTED AT THE RIG WHILE ON LOCATION.**

**Burnett Office 87 SQUARE LAKE ROAD (CR #220), Loco Hills, New Mexico 88255**  
(Loco Hills, New Mexico (2 MILES East of Loco Hills On US Hwy 82 TO C#220 Then North On CR# 220 Approx One Mile To Office).)

POWERS 31 FEDERAL #3 RE-ENTRY  
**DRILLING EXHIBIT A**



# HYDROGEN SULFIDE (H<sub>2</sub>S) CONTINGENCY PLAN

ASSUMED 100 PPM ROE = 3000'

## Emergency Procedures

In the event of a release of gas containing H<sub>2</sub>S, The first responder(s) must

- \* Isolate the area and prevent entry by other persons into the 100 PPM ROE.
- \* Evacuate any public places encompassed by 100 PPM ROE.
- \* Be equipped with H<sub>2</sub>S monitors and air packs in order to control release.
- \* Use the "buddy system" to ensure no injuries occur during the response.
- \* Take precautions to avoid personal injury during this operation.
- \* Have received training in the following:
  1. H<sub>2</sub>S detection
  2. Measures for protection against this gas
  3. Equipment used for protection and emergency response.

## Ignition of Gas Source

Should control of the well be considered lost and ignition considered, take care to protect against exposure to Sulfur Dioxide (SO<sub>2</sub>.) Intentional ignition must be coordinated with the NMOCD and local officials. Additionally the New Mexico State Police may become involved. NM State Police shall be the incident command on scene of any major release. Take care to protect downwind whenever there is an ignition of gas.

## **Characteristics of H<sub>2</sub>S and SO<sub>2</sub>**

Common Name	Chemical Formula	Specific Gravity	Threshold Limit	Hazardous Limit	Lethal Concentration
Hydrogen Sulfide	H <sub>2</sub> S	1.189 Air = 1	10 ppm	100 ppm/hr	600 ppm
Sulfur Dioxide	SO <sub>2</sub>	2.21 Air = 1	2 ppm	NA	1000 ppm

## **Contacting Authorities**

Burnett Oil Co., Inc. personal must liaison with local and state agencies to ensure a proper response to a major release. Additionally, the OCD must be notified of the release as soon as possible but no later than 4 hours. Agencies will ask for information such as type and volume of release, wind and direction, location of release, etc. **Be sure all is written down and ready to give to contact list (Drilling Exhibit A.) Directions to the site are below.** Burnett's response must be in coordination with the State of New Mexico's Hazardous Materials Emergency Response Plan.

**Burnett Office 87 SQUARE LAKE ROAD (CR #220), Loco Hills, New Mexico 88255  
(Loco Hills, New Mexico (2 MILES East of Loco Hills On US Hwy 82 TO C#220 Then North On CR# 220 Approx One Mile To Office**

**BURNETT OIL CO., INC.**

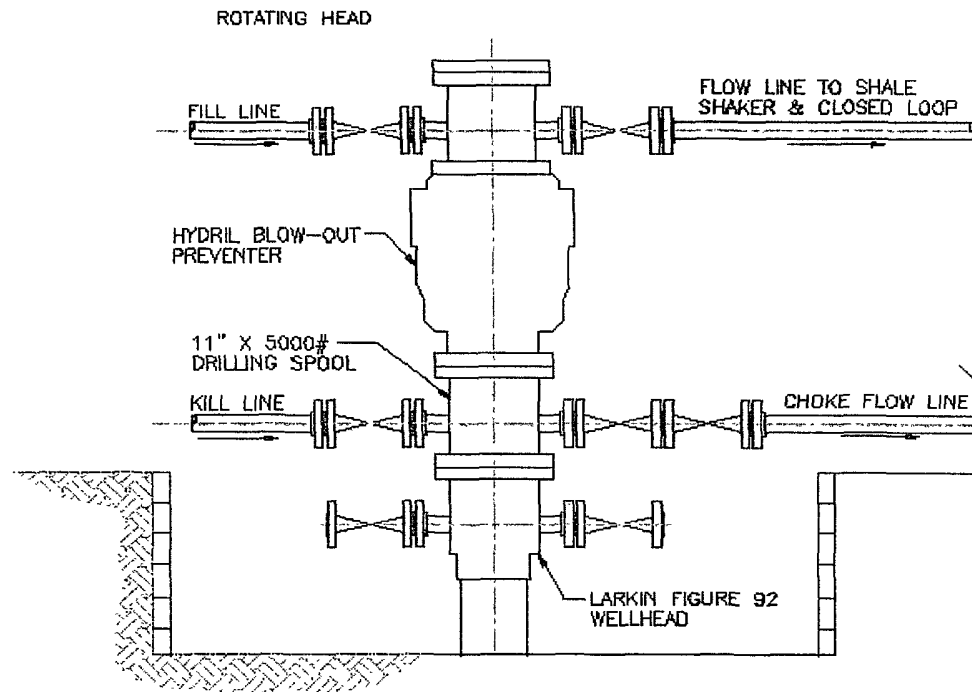
**POWERS 31 FEDERAL #3 RE-ENTRY  
DRILLING EXHIBIT B**

BURNETT PLAZA - SUITE 1500  
801 CHERRY STREET - UNIT #9

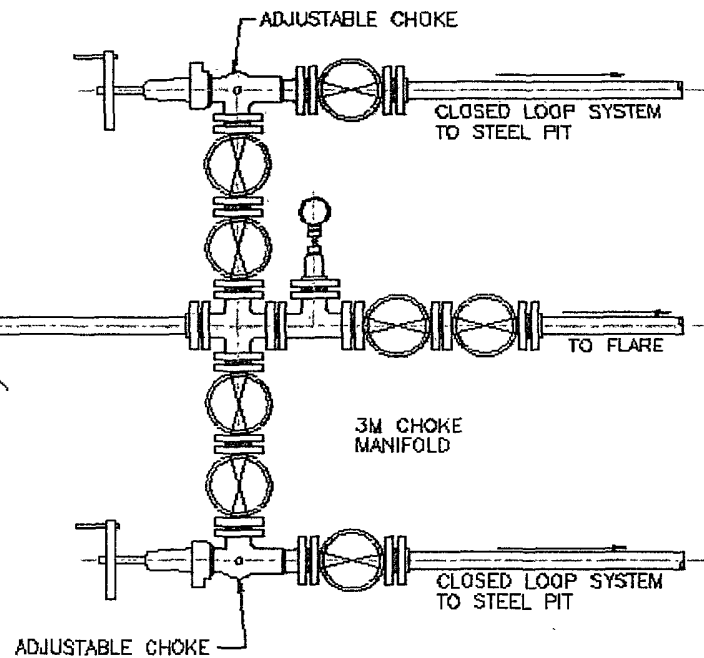
BURNETT OIL Co., INC.

FORT WORTH, TX 76102-6881  
(817) 332-5108





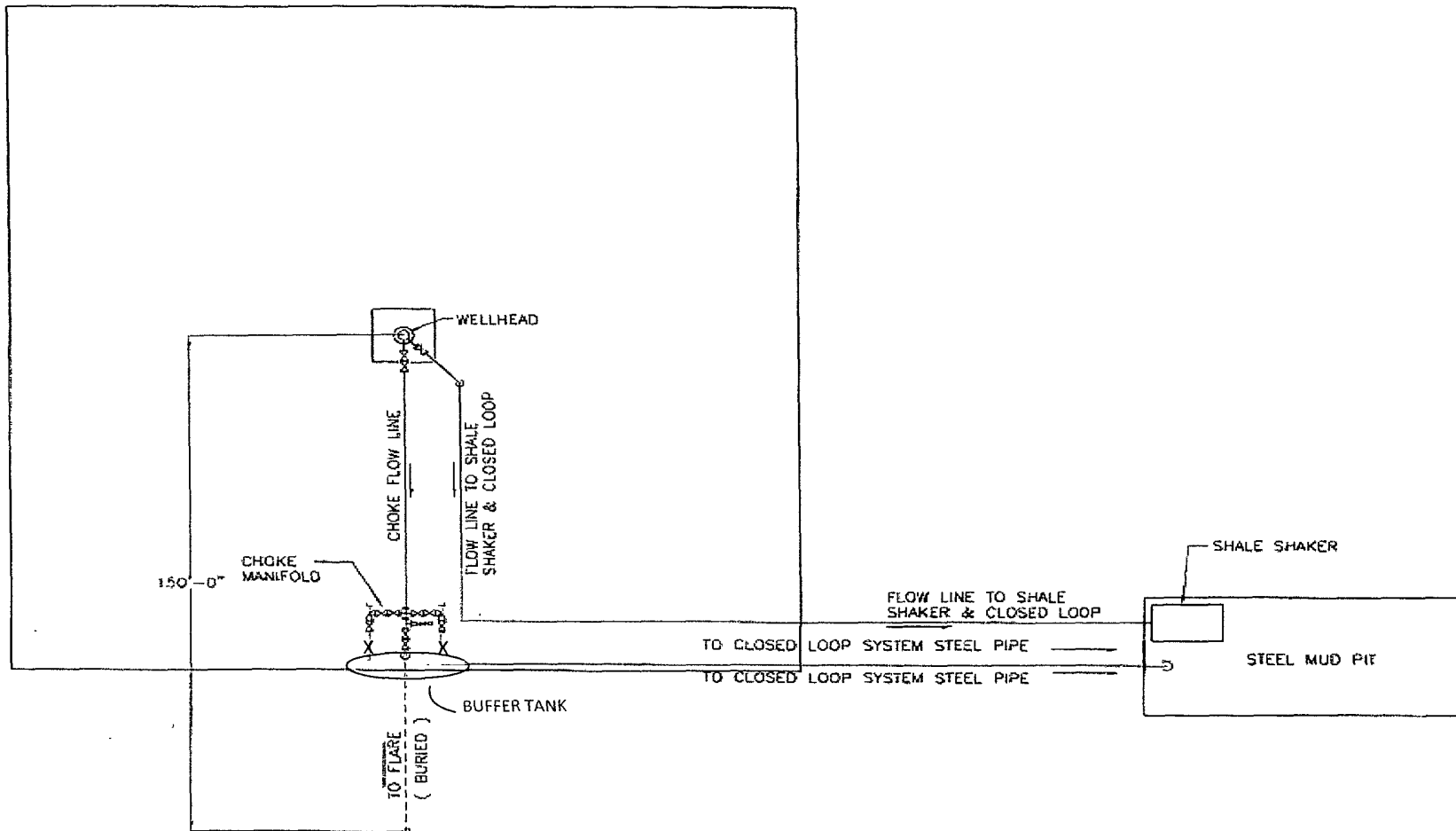
WELLHEAD ELEVATION



CHOKE MANIFOLD PLAN

**POWERS 31 FEDERAL #3 RE-ENTRY  
DRILLING EXHIBIT E**

**BURNETT OIL COMPANY, INC.  
BLOWOUT PREVENTER &  
CHOKE MANIFOLD DIAGRAM  
2000 PSI WORKING PRESSURE**



**BURNETT OIL COMPANY, INC.**

**DRILLING OPERATIONS  
WELL PAD PLAN LAYOUT**

NOT TO SCALE

DRAWING SAVED AS C:\DRAWINGS\2010dwg\10-028\10-028-02.dwg

EPS PROJECT NUMBER = 10-028  
DATE: JANUARY 29, 2010

**POWERS 31 FEDERAL #3 RE-ENTRY  
DRILLING EXHIBIT E1**

Form L-102  
 P. O. Box 1980  
 Hobbs, NM 88241-1980

State of New Mexico  
 Energy, Minerals, and Natural Resources Department

Revised 02-10-94  
 Instructions on back

**DISTRICT II**  
 P. O. Drawer DD  
 Artesia, NM 88211-0719

**OIL CONSERVATION DIVISION**  
 P. O. Box 2088  
 Santa Fe, New Mexico 87504-2088

Submit to the Appropriate  
 District Office  
 State Lease - 4 copies  
 Fee Lease - 3 copies

**DISTRICT III**  
 1000 Rio Brazos Rd.  
 Aztec, NM 87410

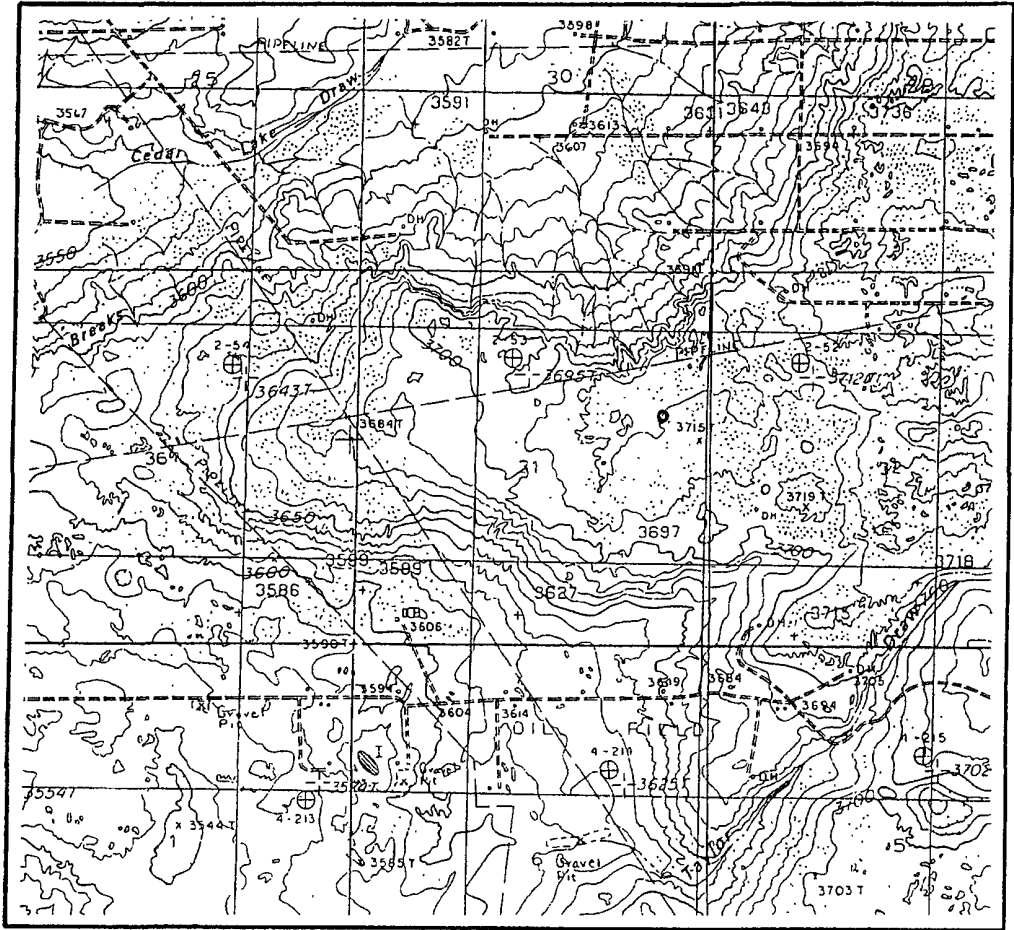
AMENDED REPORT

**DISTRICT IV**  
 P. O. Box 2088  
 Santa Fe, NM 87507-2088

**WELL LOCATION AND ACREAGE DEDICATION PLAT**

1 API Number		2 Pool Code		3 Pool Name Cedar Lake (Morrow Gas)					
4 Property Code		5 Property Name POWER '31' FEDERAL					6 Well Number 3		
7 OGRID No. 20305		8 Operator Name DEVON S.F.S. OPERATING, INC.					9 Elevation 3719'		
10 SURFACE LOCATION									
UL or lot no. H	Section 31	Township 17 SOUTH	Range 31 EAST, N.M.P.M.	Lot Ida	Feet from the 1980'	North/South line NORTH	Feet from the 660'	East/West line EAST	County EDDY
"BOTTOM HOLE LOCATION IF DIFFERENT FROM SURFACE									
UL or lot no.	Section	Township	Range	Lot Ida	Feet from the	North/South line	Feet from the	East/West line	County
12 Dedicated Acres 306.56		13 Joint or Infill		14 Consolidation Code		15 Order No.			
NO ALLOWABLE WELL BE ASSIGNED TO THIS COMPLETION UNTIL ALL INTERESTS HAVE BEEN CONSOLIDATED OR A NON-STANDARD UNIT HAS BEEN APPROVED BY THE DIVISION									
							<b>OPERATOR CERTIFICATION</b>		
							I hereby certify that the information contained herein is true and complete to the best of my knowledge and belief.		
							Signature <i>Charles H. Carleton</i>		
							Printed Name Charles H. Carleton		
							Title Sr. Engineering Technician		
							Date January 30, 2001		
							<b>SURVEYOR CERTIFICATION</b>		
							I hereby certify that the well location shown on this plat was plotted from field notes of actual surveys made by me or under my supervision, and that the same is true and correct to the best of my belief.		
							Date of Survey JANUARY 12, 2001		
							Signature and Seal of Professional Surveyor <i>V. L. Bezner</i>		
Certificate No. V. L. BEZNER R.P.S. #7920 JOB #73882 / 98 SW / J.C.P.									

LOCATION & ELEVATION TRIFICATION MAP



SCALE : 1" = 2000'

CONTOUR INTERVAL 10 FEET

SECTION 31 TWP 17-S RGE 31-E

SURVEY NEW MEXICO PRINCIPAL MERIDIAN

COUNTY EDDY STATE NM

DESCRIPTION 1980' FNL & 660' FEL

ELEVATION 3719'

OPERATOR DEVON S.F.S. OPERATING, INC.

LEASE POWER "31" FEDERAL #3

U.S.G.S. TOPOGRAPHIC MAP

LOCO HILLS, NEW MEXICO

SCALED LAT. N 32°47'34"

LONG. W 103°54'07"



This location has been very carefully staked on the ground according to the best official survey records, maps, and other data available to us.  
Review this plat and notify us immediately of any possible discrepancy.

**POWERS 31 FEDERAL #3 RE-ENTRY  
SURFACE EXHIBIT A**

**TOPOGRAPHIC LAND SURVEYORS**

*Surveying & Mapping for the Oil & Gas Industry*

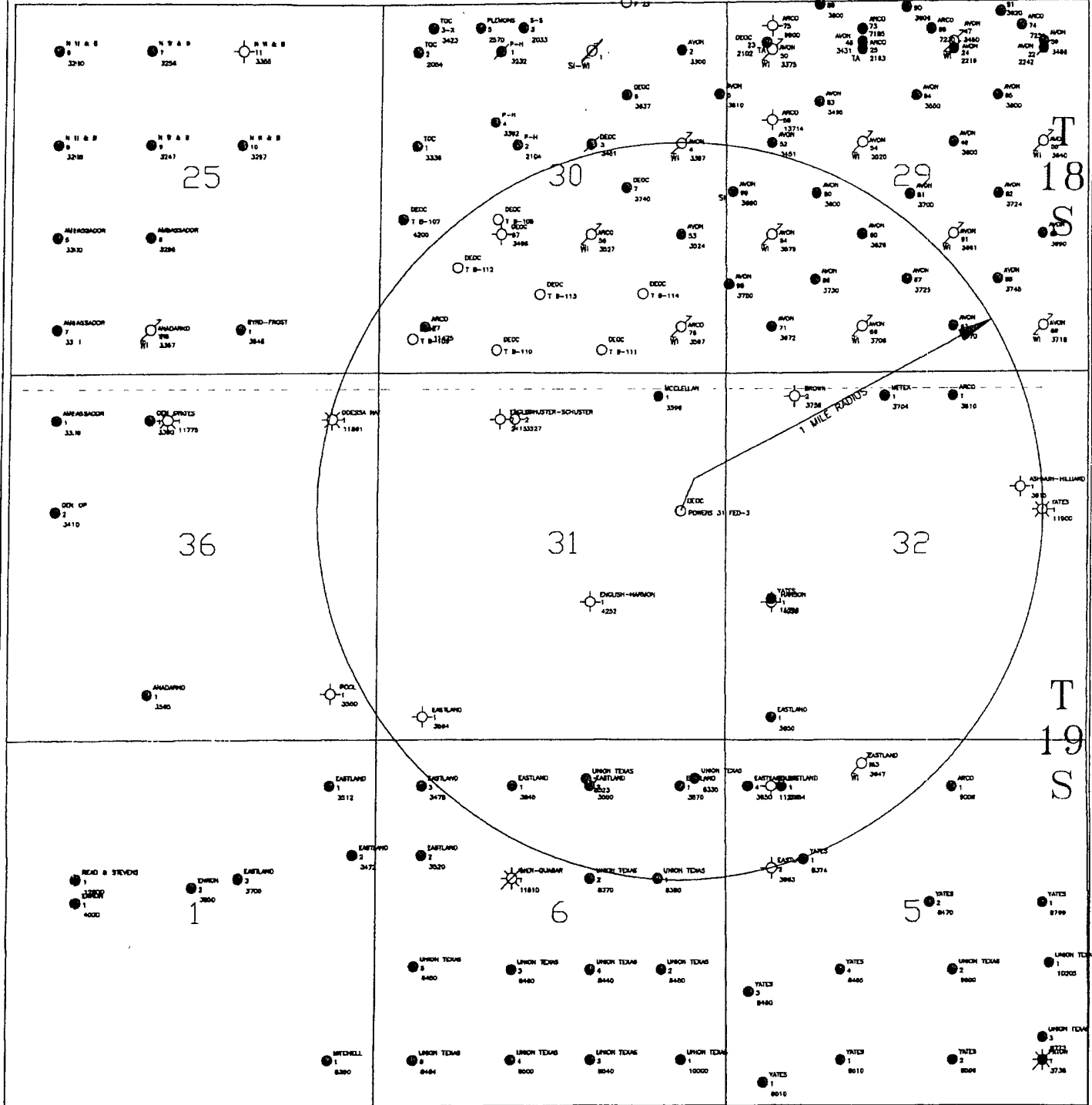
1307 N. HOBART  
PAMPA, TX. 79065  
(800) 658-6382

6709 N. CLASSEN BLVD.  
OKLAHOMA CITY, OK. 73116  
(800) 654-3219

2903 N. BIG SPRING  
MIDLAND, TX. 79705  
(800) 767-1653

R 30 E

R 31 E



**POWERS 31 FEDERAL #3 RE-ENTRY  
SURFACE EXHIBIT A1**

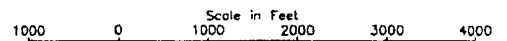
**DEVON SFS OPERATING, INC.**

**CEDAR LAKE (MORROW GAS)**

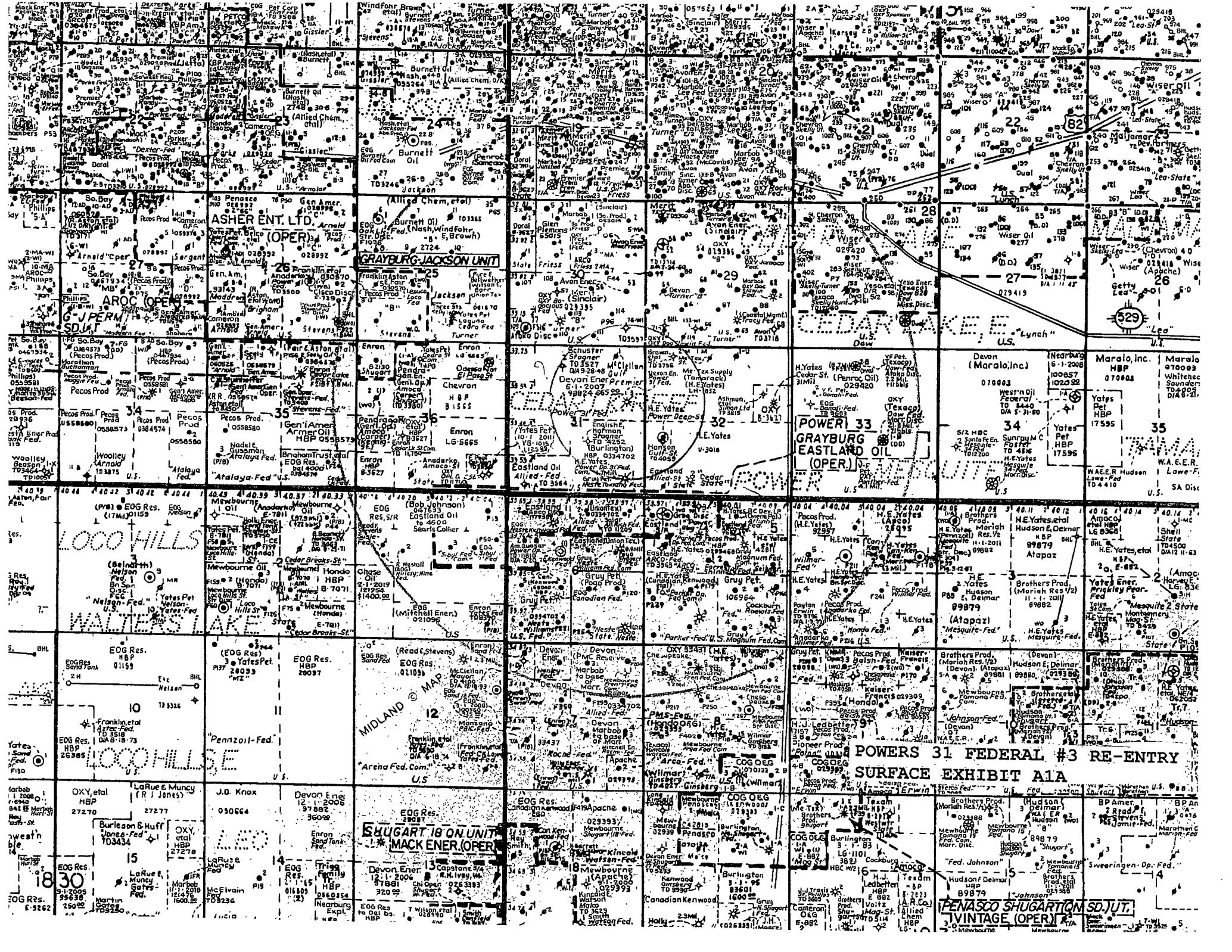
EDDY COUNTY, NEW MEXICO

WELLS WITHIN A ONE MILE RADIUS  
POWER "31" FED #3  
**EXHIBIT 4**

N



02/2001



**ASHER ENT. LTD. (OPER)**  
Arnold  
028992  
028992

**GRAYBURG JACKSON UNIT**

**POWER 33  
GRAYBURG  
EASTLAND OIL  
(OPER)**

**34**  
Sunray C  
FOSTER  
TO 48K  
H. Yates  
029420  
029420

**35**  
Yates Pet  
HBP  
17595  
W.A.E.R.  
Low-F  
SA Disc

**LOCO HILLS**  
**WALTERS LAKE**

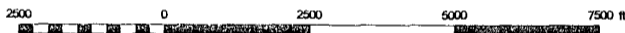
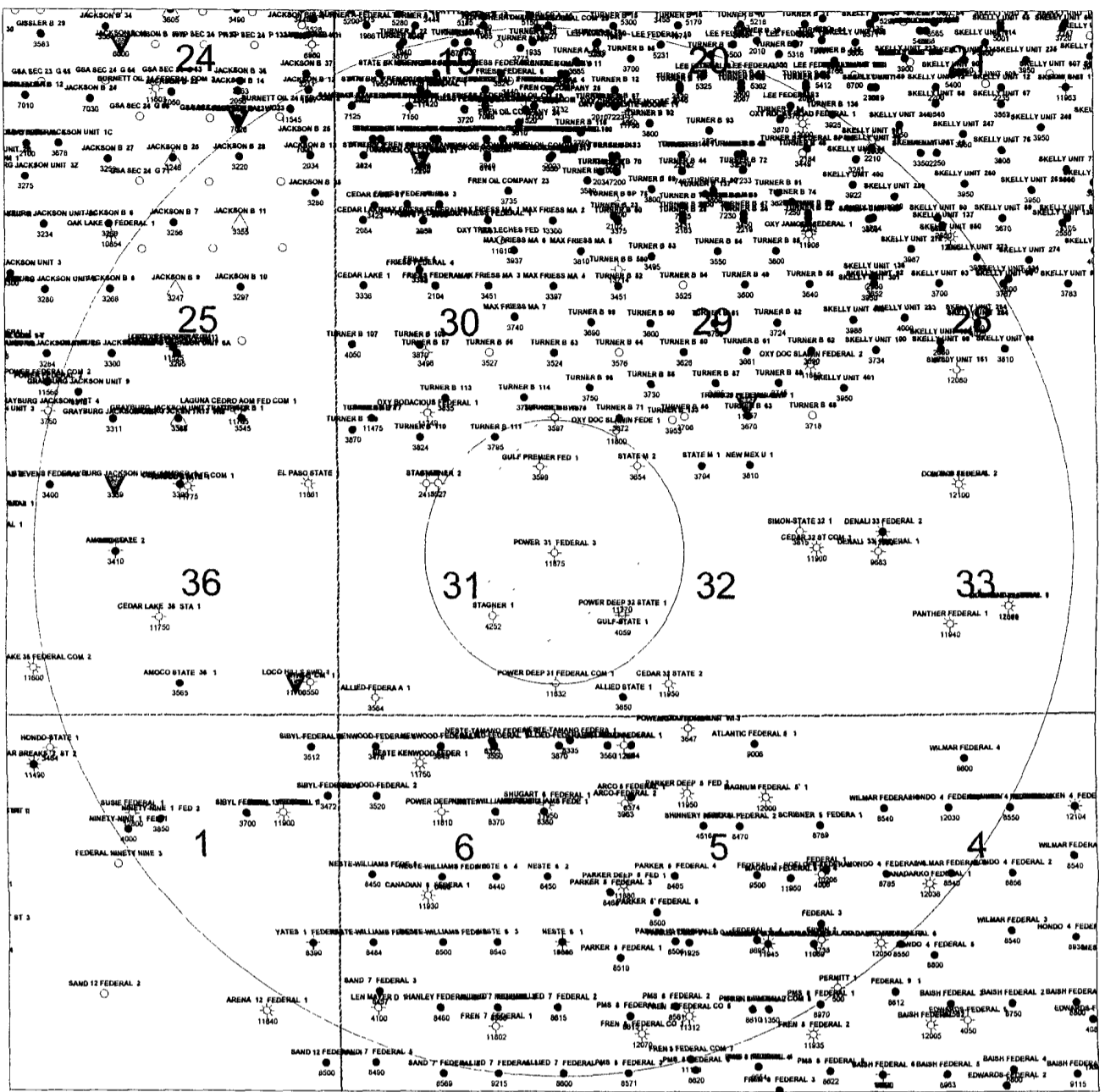
**MIDLAND MAP**

**LOCO HILLS SE**

**SHUGART 18 ON UNIT  
MACK 18 ON (OPER)**

**POWERS 31 FEDERAL #3 RE-ENTRY  
SURFACE EXHIBIT A1A**

**PENASCO SHUGART UNIT  
VINTAGE (OPER)**



Well Status

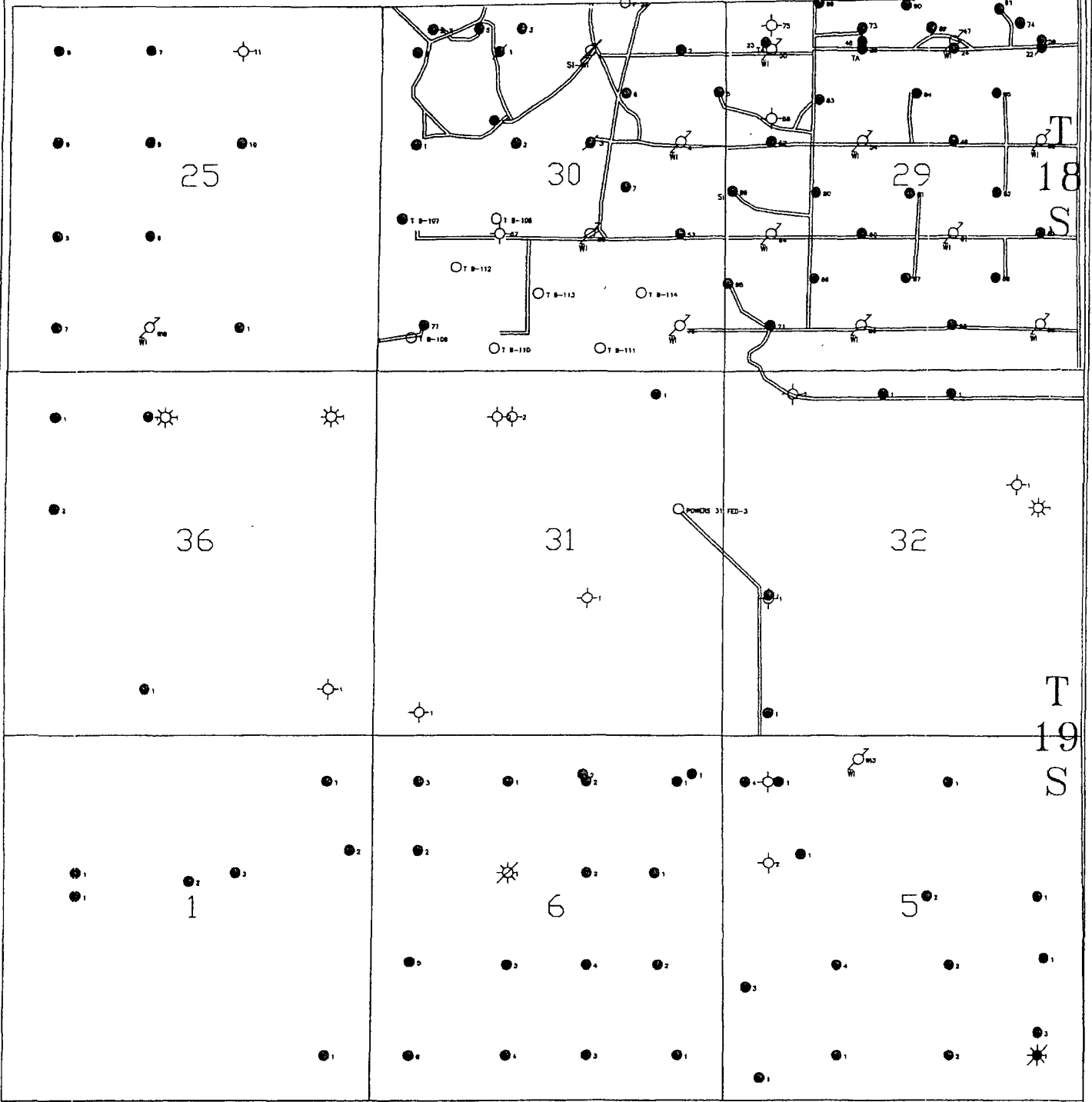
- D&A
  - GAS
  - O&G
  - OIL
  - LOC
  - INJ
  - SWD
- 2 MILE RADIUS
  - 1/2 MILE RADIUS

<b>Burnett Oil Co., Inc.</b> <b>6666</b>	
<b>SWD Location</b> Loco Hills, New Mexico	
Author: CLK - Eng Tech	Date: April 8, 2010
Scale: 1 inch = 2,500 ft	

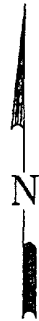
POWERS 31 FEDERAL #3 RE-ENTRY  
SURFACE EXHIBIT A1B

R 30 E

R 31 E



POWERS 31 FEDERAL #3 RE-ENTRY  
SURFACE EXHIBIT A2

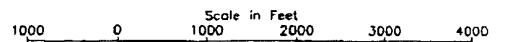


DEVON SFS OPERATING, INC.

CEDAR LAKE (MORROW GAS)

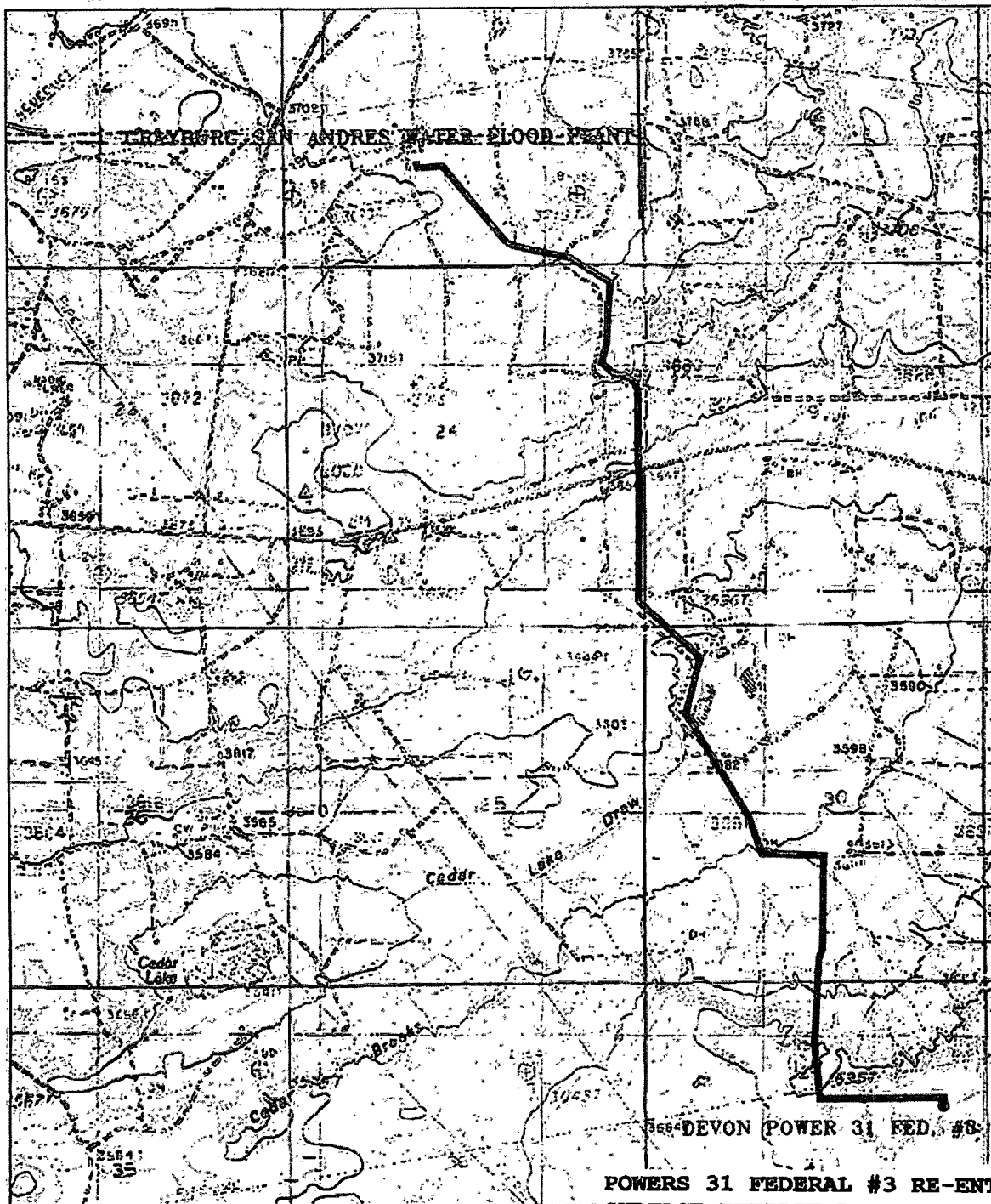
EDDY COUNTY, NEW MEXICO

ROAD PLAT  
POWER "31" FED #3  
EXHIBIT 3



02/2001





**POWERS 31 FEDERAL #3 RE-ENTRY  
SURFACE EXHIBIT B**

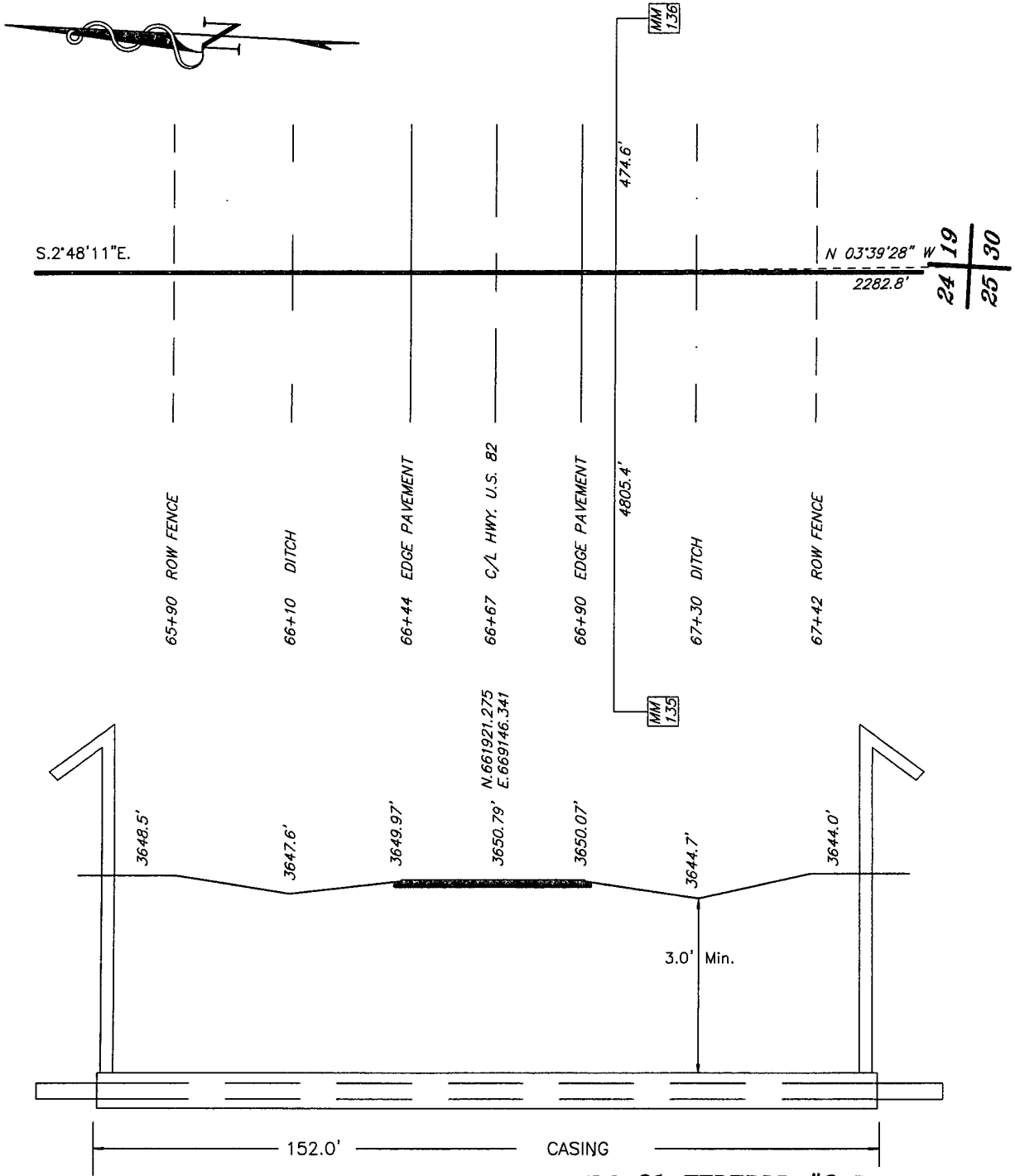
**PROPOSED PIPELINE TO THE GRAYBURG  
SAN ANDRES WATER FLOOD PLANT**  
 Sections 13&24, Township 17 South, Range 30 East, AND  
 Sections 19,30&31, Township 17 South, Range 31 East,  
 N.M.P.M., Eddy County, New Mexico.

**basin surveys**  
 focused on excellence  
 in the oilfield

P.O. Box 1786  
 1120 N. West County Rd.  
 Hobbs, New Mexico 88241  
 (575) 393-7316 - Office  
 (575) 392-2206 - Fax  
 basin-surveys.com

W.O. Number: 22637
Survey Date: 04/12/10
Scale: 1" = 2000'
Date: 04/20/10

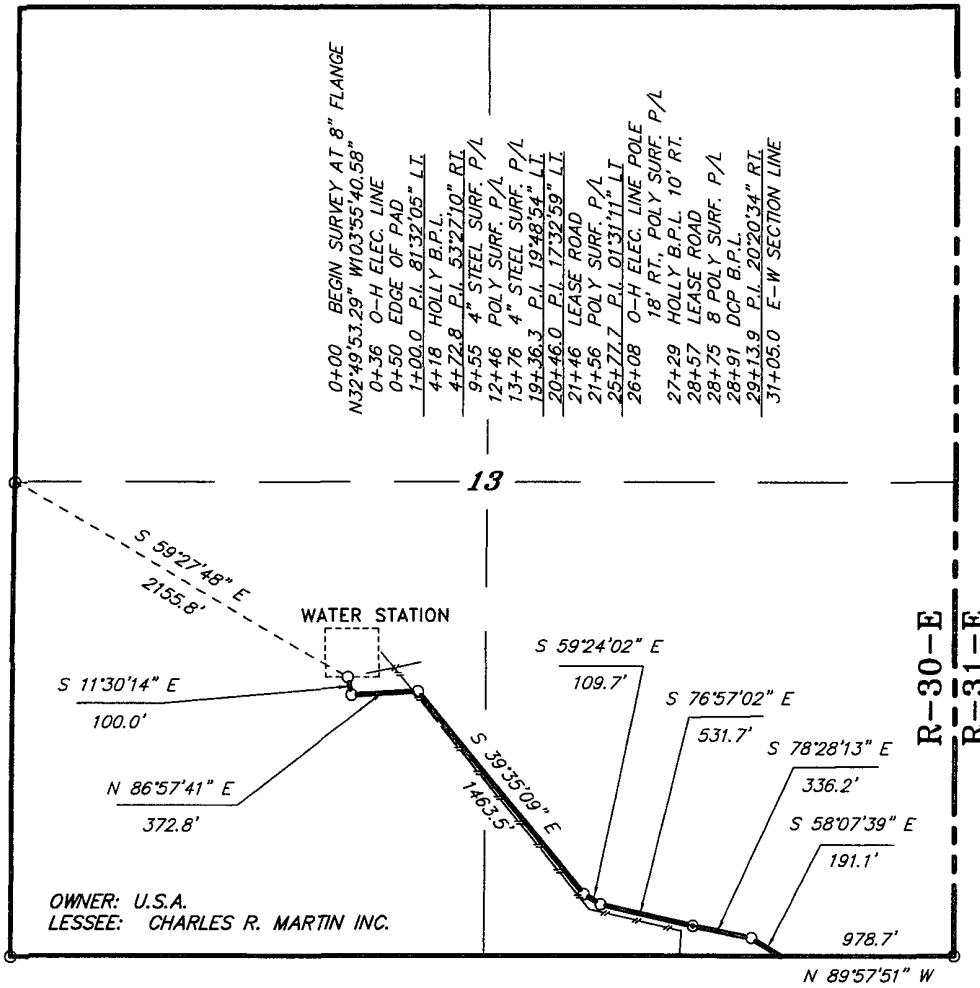
**BURNETT  
OIL  
COMPANY**



**POWERS 31 FEDERAL #3 RE-ENTRY  
SURFACE EXHIBIT C**

	Carrier Pipe	Casing Pipe	PROPOSED CROSSING OF U.S. HWY. #82
Contents			<b>BURNETT OIL COMPANY</b>
O.D.			REF: GRAYBURG JACKSON SAN ANDRES WATER FLOOD PLANT
I.D.			A proposed road crossing in Section 29, Township 17 South, Range 30 East, N.M.P.M. Eddy County, New Mexico.
Material			
W.T.			
Grade			

SECTION 13, TOWNSHIP 17 SOUTH, RANGE 30 EAST, N.M.P.M.,  
EDDY COUNTY, NEW MEXICO.



LEGAL DESCRIPTION

A STRIP OF LAND 30.0 FEET WIDE, LOCATED IN SECTION 13, TOWNSHIP 17 SOUTH, RANGE 30 EAST, N.M.P.M., EDDY COUNTY, NEW MEXICO AND BEING 15.0 FEET LEFT AND RIGHT OF THE ABOVE PLATTED CENTERLINE SURVEY.

3105.0 FEET = 188.18 RODS = 0.59 MILES = 2.14 ACRES

**POWERS 31 FEDERAL #3 RE-ENTRY  
SURFACE EXHIBIT C1**

I HEREBY CERTIFY THAT THIS PLAT WAS PREPARED FROM FIELD NOTES OF A PERSONAL SURVEY AND MEETS OR EXCEEDS ALL REQUIREMENTS FOR LAND SURVEYS AS SPECIFIED BY THIS STATE.



GARY L. JONES No. 7977  
TEXAS P.L.S. No. 5074



**BURNETT OIL COMPANY**

PROP. PIPELINE TO GRAYBURG SAN ANDRES WATER FLOOD PLANT

A PIPELINE CROSSING U.S.A. LAND IN  
SECTION 13, TOWNSHIP 17 SOUTH, RANGE 30 EAST,  
N.M.P.M., EDDY COUNTY, NEW MEXICO.

**Basin Surveys** P.O. BOX 1786 - HOBBS, NEW MEXICO

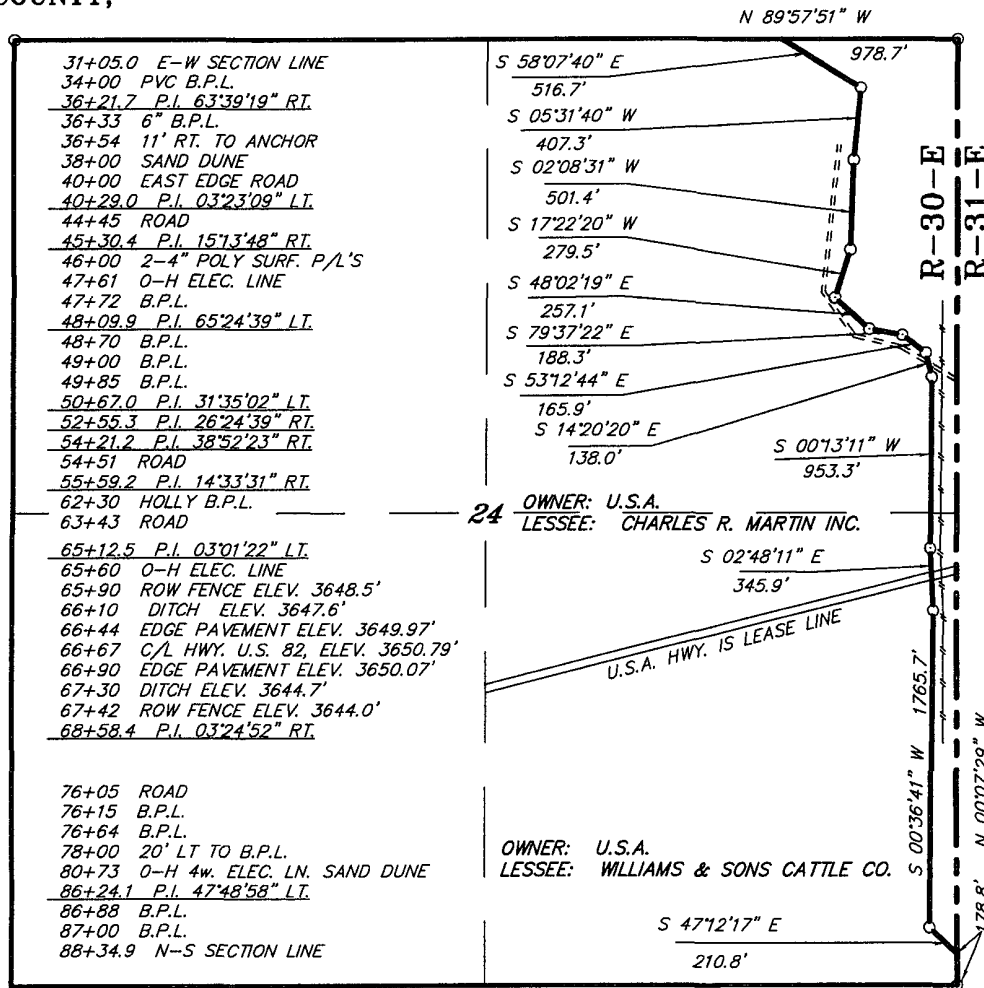
W.O. Number: 22637 Drawn By: James Presley

Date: 04/20/10 Disk: JLP #1 - BUR22637

Survey Date: 04/12/10

Sheet 1 of 4 Sheets

SECTION 24, TOWNSHIP 17 SOUTH, RANGE 30 EAST, N.M.P.M.,  
EDDY COUNTY, NEW MEXICO.



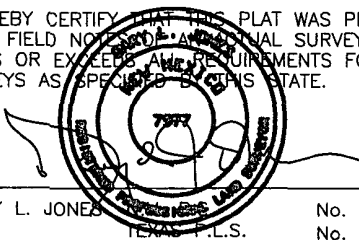
LEGAL DESCRIPTION

A STRIP OF LAND 30.0 FEET WIDE, LOCATED IN SECTION 24, TOWNSHIP 17 SOUTH, RANGE 30 EAST, N.M.P.M., EDDY COUNTY, NEW MEXICO AND BEING 15.0 FEET LEFT AND RIGHT OF THE ABOVE PLATTED CENTERLINE SURVEY.

3562.0 FEET = 215.88 RODS = 0.67 MILES = 2.45 ACRES  
 2167.9 FEET = 131.39 RODS = 0.42 MILES = 1.50 ACRES  
 5729.9 FEET = 347.27 RODS = 1.09 MILES = 3.95 ACRES

**POWERS 31 FEDERAL #3 RE-ENTRY  
SURFACE EXHIBIT C2**

I HEREBY CERTIFY THAT THIS PLAT WAS PREPARED FROM FIELD NOTES AND ORIGINAL SURVEY AND MEETS OR EXCEEDS ALL REQUIREMENTS FOR LAND SURVEYS AS SPECIFIED BY THIS STATE.



GARY L. JONES No. 7977  
 LAND SURVEYOR No. 5074



**BURNETT OIL COMPANY**

PROP. PIPELINE TO GRAYBURG SAN ANDRES WATER FLOOD PLANT

A PIPELINE CROSSING U.S.A. LAND IN  
 SECTION 24, TOWNSHIP 17 SOUTH, RANGE 30 EAST,  
 N.M.P.M., EDDY COUNTY, NEW MEXICO.

**BASIN SURVEYS** P.O. BOX 1786 - HOBBS, NEW MEXICO

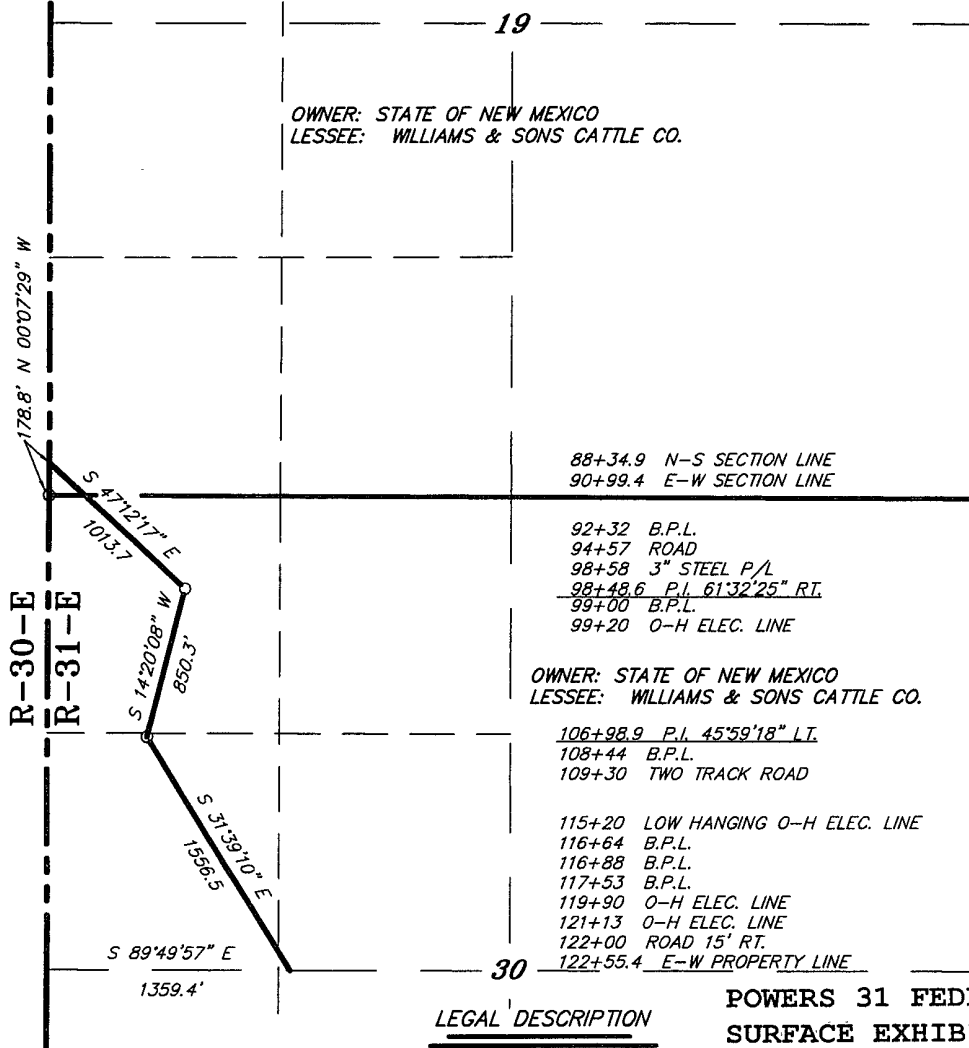
W.O. Number: 22637 Drawn By: James Presley

Date: 04/20/10 Disk: JLP #1 - BUR22637

Survey Date: 04/12/10

Sheet 2 of 4 Sheets

SECTIONS 19&30, TOWNSHIP 17 SOUTH, RANGE 31 EAST, N.M.P.M.,  
 EDDY COUNTY, NEW MEXICO.



**LEGAL DESCRIPTION**

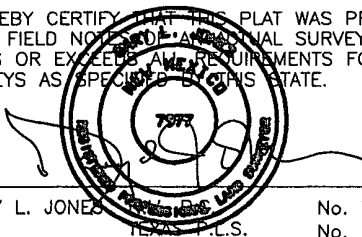
**POWERS 31 FEDERAL #3 RE-ENTRY SURFACE EXHIBIT C3**

A STRIP OF LAND 30.0 FEET WIDE, LOCATED IN SECTIONS 19&30, TOWNSHIP 17 SOUTH, RANGE 31 EAST, N.M.P.M., EDDY COUNTY, NEW MEXICO AND BEING 15.0 FEET LEFT AND RIGHT OF THE FOLLOWING DESCRIBED CENTERLINE SURVEY.

BEGINNING AT A POINT ON THE WEST SECTION LINE WHICH LIES N.00°07'29\"/>

SECTION 19 SW/4 SW/4		16.03 RODS	0.18 ACRES		
SECTION 30					
NW/4 NW/4	96.95 RODS	1.10 ACRES	SW/4 NW/4	86.85 RODS	0.99 ACRES
			SE/4 NW/4	7.47 RODS	0.09 ACRES
TOTAL 3420.5 FEET = 207.3 RODS = 2.36 ACRES					

I HEREBY CERTIFY THAT THIS PLAT WAS PREPARED FROM FIELD NOTES AND ORIGINAL SURVEY AND MEETS OR EXCEEDS ALL REQUIREMENTS FOR LAND SURVEYS AS SPECIFIED BY THIS STATE.



GARY L. JONES No. 7977  
 P.L.S. No. 5074



**BURNETT OIL COMPANY**

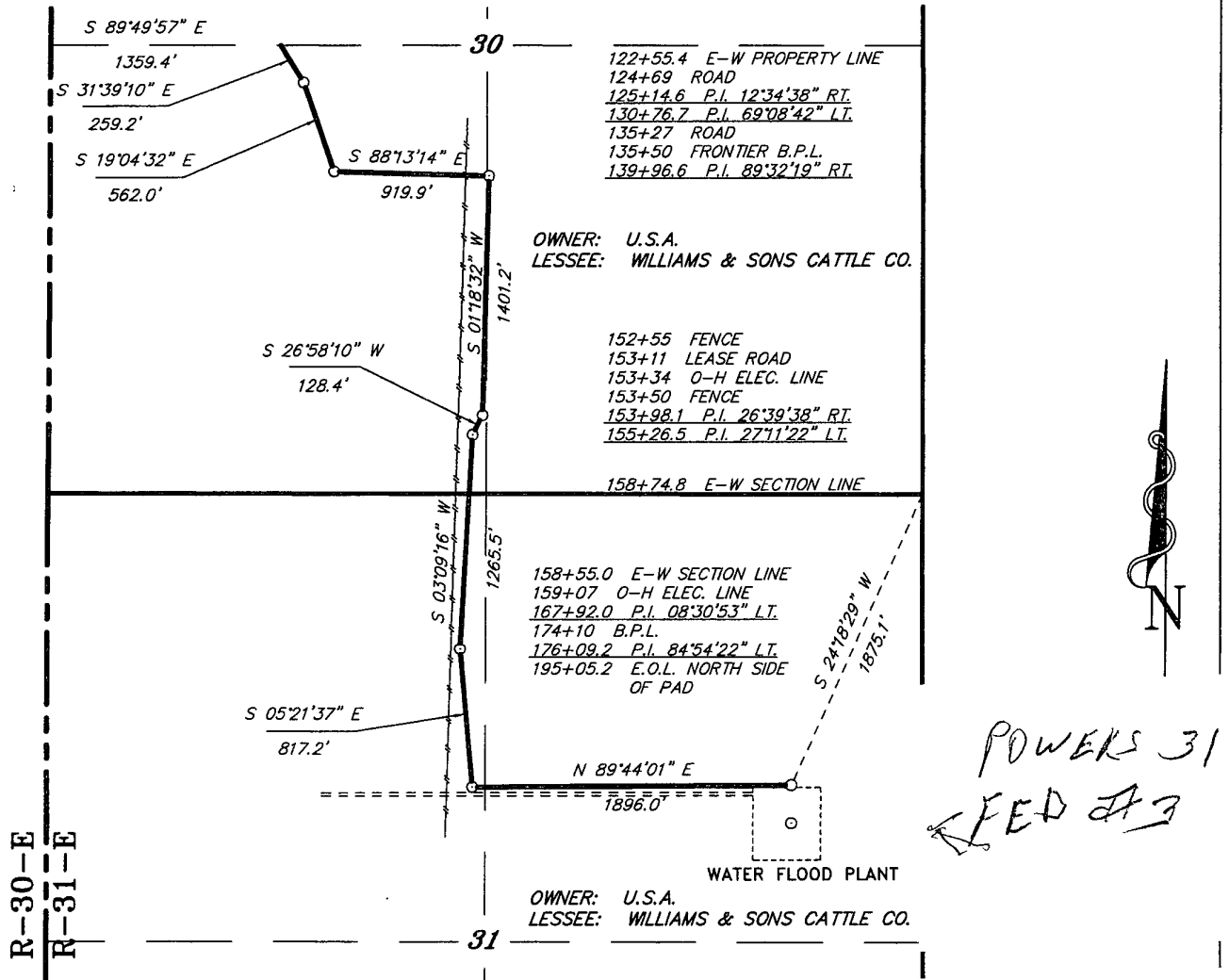
PROP. PIPELINE TO GRAYBURG SAN ANDRES WATER FLOOD PLANT

A PIPELINE CROSSING STATE LAND IN  
 SECTIONS 19&30, TOWNSHIP 17 SOUTH, RANGE 31 EAST,  
 N.M.P.M., EDDY COUNTY, NEW MEXICO.

**BASIN SURVEYS** P.O. BOX 1786—HOBBS, NEW MEXICO

W.O. Number: 22637	Drawn By: James Presley
Date: 04/20/10	Disk: JLP #1 - BUR22637
Survey Date: 04/12/10	Sheet 3 of 4 Sheets

SECTIONS 30&31, TOWNSHIP 17 SOUTH, RANGE 31 EAST, N.M.P.M.,  
EDDY COUNTY, NEW MEXICO.



LEGAL DESCRIPTION

A STRIP OF LAND 30.0 FEET WIDE, LOCATED IN SECTIONS 30&31, TOWNSHIP 17 SOUTH, RANGE 31 EAST, N.M.P.M., EDDY COUNTY, NEW MEXICO AND BEING 15.0 FEET LEFT AND RIGHT OF THE ABOVE PLATTED CENTERLINE SURVEY.

SEC. 30 3619.4 FEET = 219.36 RODS = 0.68 MILES = 2.49 ACRES  
 SEC. 31 3630.4 FEET = 220.02 RODS = 0.69 MILES = 2.50 ACRES

TOTAL 7249.8 FEET = 439.38 RODS = 1.37 MILES = 4.99 ACRES

I HEREBY CERTIFY THAT THIS PLAT WAS PREPARED FROM FIELD NOTES OF A LEGAL SURVEY AND MEETS OR EXCEEDS ALL REQUIREMENTS FOR LAND SURVEYS AS SPECIFIED IN THIS STATE.



GARY L. JONES No. 7977  
 TEXAS P.L.S. No. 5074



**BURNETT OIL COMPANY**

PROP. PIPELINE TO GRAYBURG SAN ANDRES WATER FLOOD PLANT

A PIPELINE CROSSING U.S.A. LAND IN  
 SECTIONS 30&31, TOWNSHIP 17 SOUTH, RANGE 31 EAST,  
 N.M.P.M., EDDY COUNTY, NEW MEXICO.

**BASIN SURVEYS** P.O. BOX 1786 - HOBBS, NEW MEXICO

W.O. Number: 22637 Drawn By: James Presley

Date: 04/20/10 Disk: JLP #1 - BUR22637

Survey Date: 04/12/10

Sheet 4 of 4 Sheets